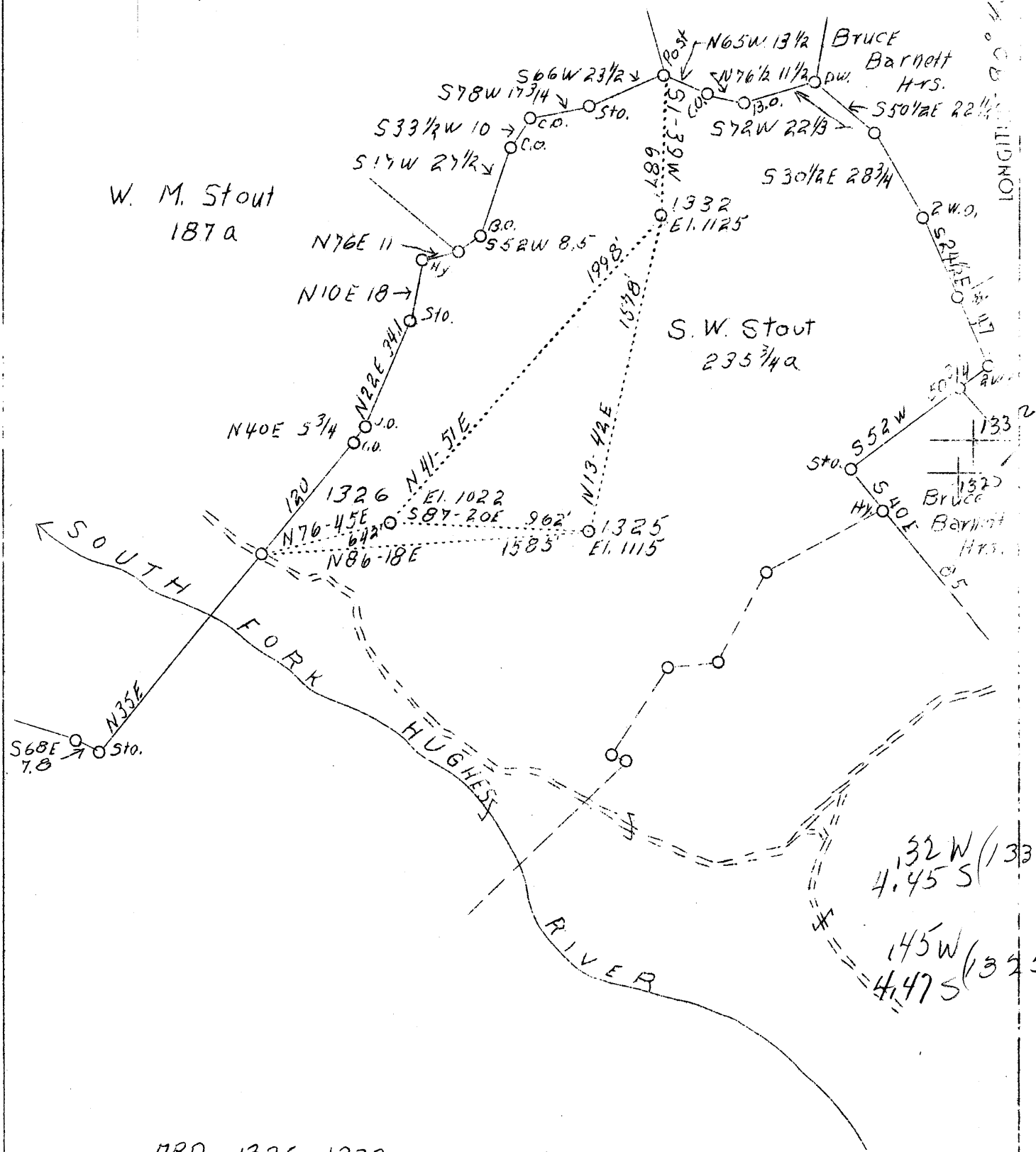


LATITUDE 39° 15'

LONGITUDE 90° 45'



ABD. 1325-1332

F.B. 665 P 21 S18 W4 Sh. 68

Company	Hope Const. & Ref. Co.
Address	Clarksburg, W. Va.
Farm	S. W. Stout
Acres	1427
Lease No.	C-6197
Well (Farm) No.	-
Serial No.	1325-1326-1332
Elevation (SP)	Shown above
Quadrangle	Holbrook <i>WIE</i>
County	Doddridge
District	New Milton
Engineer	W. M. Bowers
Eng. Reg. No.	900
Date	Sept. 16, 1938
Scale	1" - 40 poles

STATE OF WEST VIRGINIA
 Department of Mines
 OIL & GAS DIVISION
 Charleston

WELL LOCATION MAP

File No. *1325-247-A*
well No. 1332

x Denotes location of well on U. S. Topographic Maps, scale 1 to 62,500, latitude and longitude lines being represented by border lines as shown.

- Denotes one inch spaces on border line of original tracing.