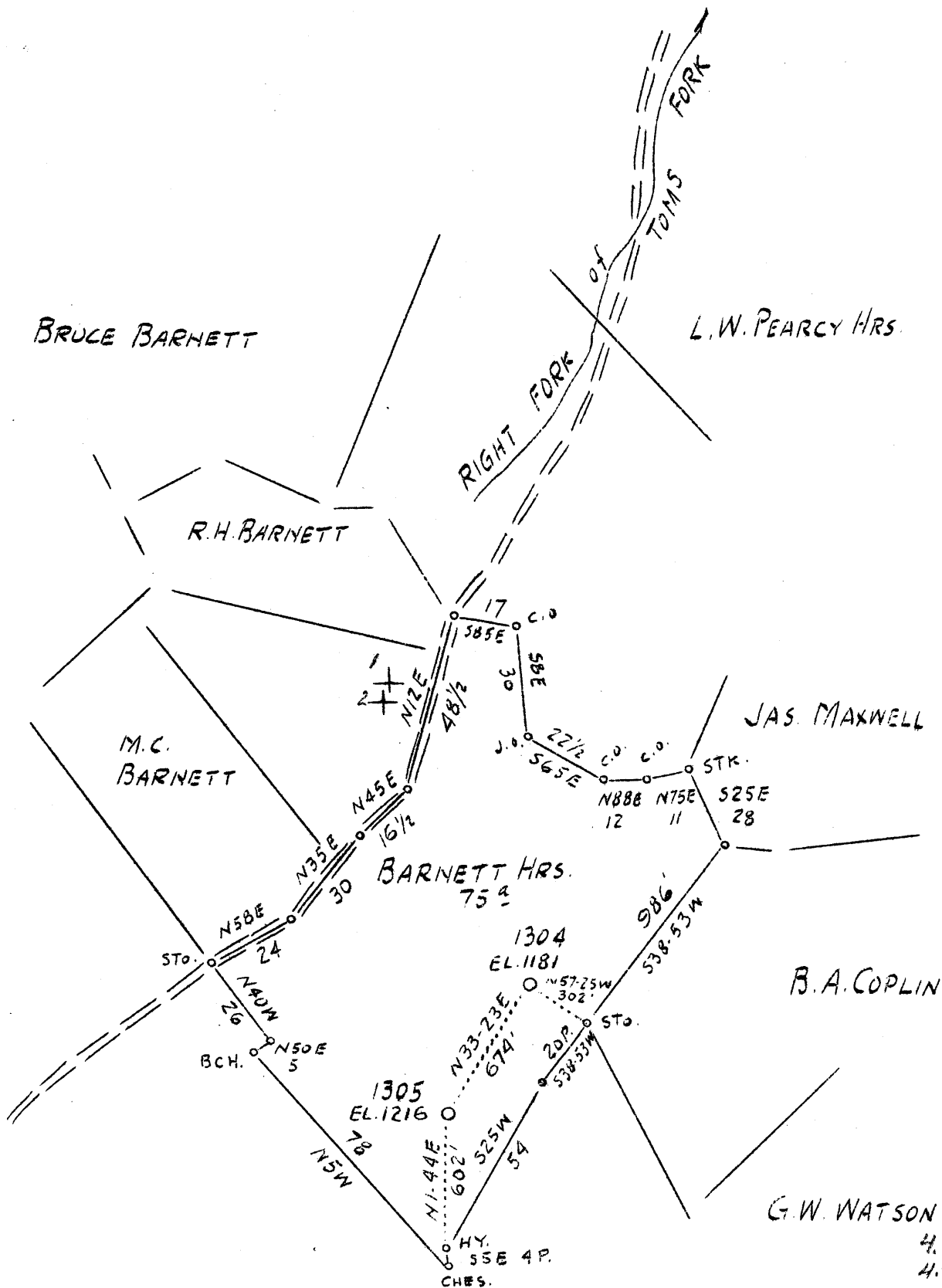


LATITUDE 39° 15'

LONGITUDE 80° 40'



ABANDONMENTS 1304, 1305

F.A. 665 P34.35

Company	Hope Const'r. & Ref. Co.
Address	Clarksburg, W. Va.
Farm	Barnett Hrs.
Tract	One
Acres	75
Lease No.	5670
Well (Farm) No.	-
Serial No.	1304-1305
Elevation (SP)	1181 - 1216
Quadrangle	Vadis N/W
County	Doddridge
District	Southwest
Engineer	J. M. Bowers
Eng. Reg. No.	900
Date	August 15, 1938
Scale	1" = 40 poles

STATE OF WEST VIRGINIA  
 Department of Mines  
 OIL & GAS DIVISION  
 Charleston

WELL LOCATION MAP  
 File No. DOD-233 A + ~~235 A~~  
 #1304  
 WELL # 1305

x Denotes location of well on U. S. Topographic Maps, scale 1 to 62,500, latitude and longitude lines being represented by border lines as shown.

- Denotes one inch spaces on border line of original tracing.

4.8 S } 1  
 4.4 W }  
 5.0 S } 2  
 4.5 W }

WEST VIRGINIA DEPARTMENT OF MINES  
OIL AND GAS DIVISION

184

WELL RECORD

Permit No. ....

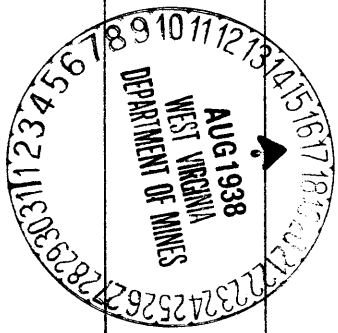
Oil or Gas Well Oil  
(Kind)

Company Hope Construction & Refining Company  
 Address Clarksburg, W. Va.  
 Farm Barnett Heirs Acres 75  
 Location (waters) Right Fork of Toms Fork  
 Well No. 1305 Elev. 1216  
 District Southwest County Doddridge  
 The surface of tract is owned in fee by Bruce Barnett  
R #1. Address Blandville, W. Va.  
 Mineral rights are owned by .....  
 Address .....  
 Drilling commenced 10-12-1903  
 Drilling completed 1-30-1904  
 Date shot 3-4-1929 Depth of shot In Gordon  
 Open Flow /10ths Water in ..... Inch  
 /10ths Merc. in ..... Inch  
 Volume ..... Cu. Ft.  
 Rock Pressure ..... lbs. .... hrs.  
 Oil ..... bbls., 1st 24 hrs.  
 Fresh water None recorded feet ..... feet  
 Salt water None recorded feet ..... feet

Casing and Tubing	Used in Drilling	Left in Well	Packers
Size			
16			Kind of Packer
13			
10	640	Pulled	Size of
8 1/4	1355	1355	
6 5/8	2113	2113	Depth set
5 3/16	707	707	
3			Perf. top
2	2812	2812	Perf. bottom
Liners Used			Perf. top
			Perf. bottom

CASING CEMENTED ..... SIZE ..... No. FT. .... Date  
Not cemented  
 COAL WAS ENCOUNTERED AT 220 FEET. 24 INCHES  
 FEET. .... INCHES. .... FEET. .... INCHES  
 FEET. .... INCHES. .... FEET. .... INCHES

Formation	Color	Hard or Soft	Top	Bottom	Oil Gas or Water	Depth Found	Remarks
Pittsburgh, Coal			220	222			
First Cow Run, Sand			1228	1235			
Second Cow Run Sand			1355	1400			
First Salt Sand			1510	1530			
Second Salt Sand			1560	1630			
Maxon Sand			1895	1910			
Big Lime			2103	2168			
Big Injun Sand			2168	2252			
Berea Sand			2380	2510			
Gordon Stray Sand			2787	2790			
Gordon Sand			2800	2805	Oil	2801	
Total Depth			2825				



Formation	Color	Hard or Soft	Top	Bottom	Oil, Gas or Water	Depth Found	Remarks

Date..... August 15, ....., 1938.

APPROVED. Hope Construction & Refining Co. Owner

By.....  ..... Asst. General Supt.  
 (Title)

Southwest District, Roddrige County, W. Va.  
 By Hope Construction & Refining Co., Clarksburg, W. Va.  
 on 75 acres, on Right Fork of Toms Fork.

Elevation, 1216' L.

Surface owned by Bruce Barnett, Route 1, Blandville, W. Va.

Drilling commenced 10-12-1903 completed, 1-30-1904.

Shot 3-4-1929, in Gordon Sand.

No water recorded.

10" casing, 640' (pulled); 8", 1355'; 6", 2113'; 5", 707';  
 2" tubing, 2812'.

Casing not cemented.

Coal was encountered at 220-222'.

Oil well. Abandonment reported to Dept. of Mines Aug. 15, 1938.

Record to DOT from Mrs. Griffith Sept. 22, 1938.

	Top.	Bottom.
Pittsburgh <sup>?</sup> Coal	220	- 222
First Cow Run Sand	1228	- 1235
Second Cow Run Sand	1355	- 1400
First Salt Sand	1510	- 1530
Second Salt Sand	1560	- 1630
Marton Sand	1895	- 1910
Big Line	2103	- 2168
Big In Jan Sand	2168	- 2252
Berea Sand	2380	- 2510
Gordon Stray Sand	2787	- 2790
Gordon Sand (oil, 2801')	2800	- 2805
Total depth		2825