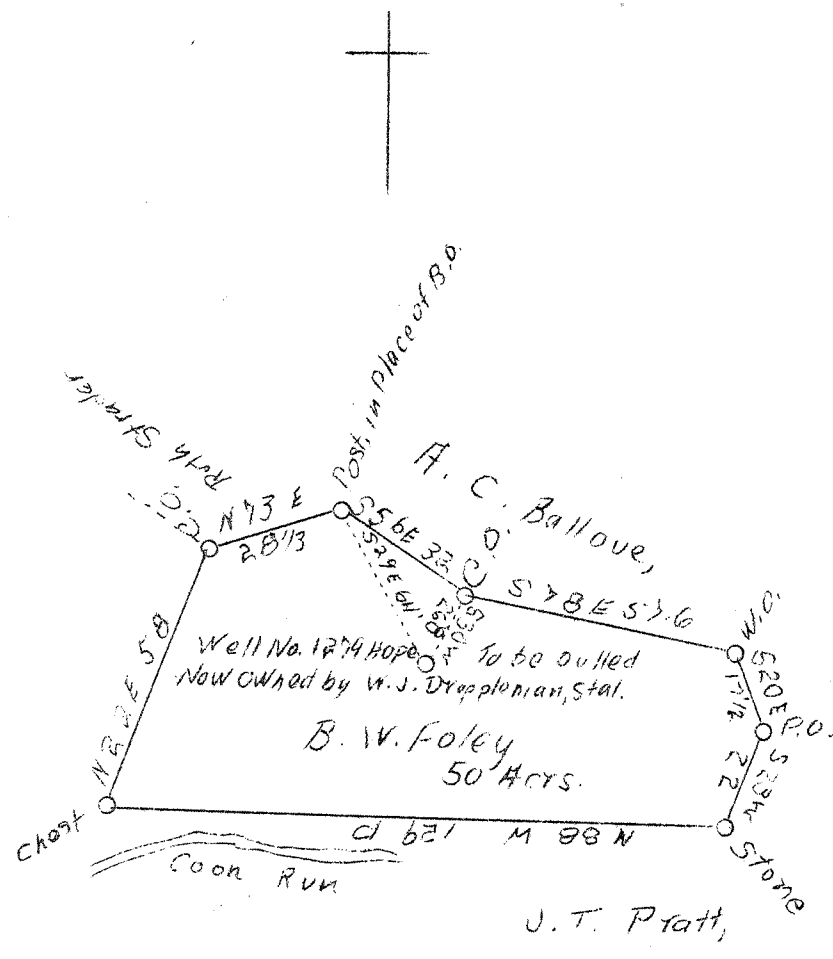


M

1 2 3

LATITUDE 39° 25'

LONGITUDE 80° 35'



26 S  
40 W

Company	L. A. Henderson, Agt.
Address	West Union, W. Va.
Farm	B. W. Foley
Tract	1
Acres	50
Well (Farm) No.	1279 Hope
Elevation	1217 (Spirit Level)
Quadrangle	Centerpoint
County	Doddridge
District	McClellan
Engineer	J. M. Martin
Eng. Reg. No.	84
Date	May 7, 1938
Scale	40 p. = 1"

STATE OF WEST VIRGINIA  
 Department of Mines  
 OIL & GAS DIVISION  
 Charleston

WELL LOCATION MAP  
 File No. Dod-224-A  
 was 01770510

X Denotes location of well on U. S. Topographic Maps, scale 1 to 62,500, latitude and longitude lines being represented by border lines as shown.

- Denotes one inch spaces on border line of original tracing.

DODD-224-A

McClellan District, Doddridge County, W. Va.

By W. J. Droppleman et al., West Union, W. Va. (L.A. Henderson, Atty.)

On 50 acres; Centerpoint Quadrangle.

Surface and minerals owned by J. D. Foley, West Union, W. Va.

Drilled July 18, 1916.

Elevation, 1217' L.

13" wood conductor, 16'; 10" casing, 610'; 8 $\frac{1}{2}$ ", 1295'; 6 $\frac{1}{4}$ ", 2224';

5 $\frac{3}{8}$ ", 2230'.

Coal was encountered at 843-845'. No record of shot.

Oil well. Abandonment reported to Dept. of Mines June 7, 1938.

	Top.	Bottom.
Pittsburgh Coal	843	- 845
Red rock	1060	- 1180
1st Cow Run Sand	1202	- 1230
2nd Cow Run Sand	1343	- 1353
1st Salt Sand (water, 1570')	1530	- 1610
2nd Salt Sand	1650	- 1850
3rd Salt Sand	1984	- 1996
Little Lime	2184	- 2192
Pencil Cave	2192	- 2196
Big Lime	2196	- 2272
Big Injun Sand (oil, 2349')	2283	- 2392
Total depth		2397