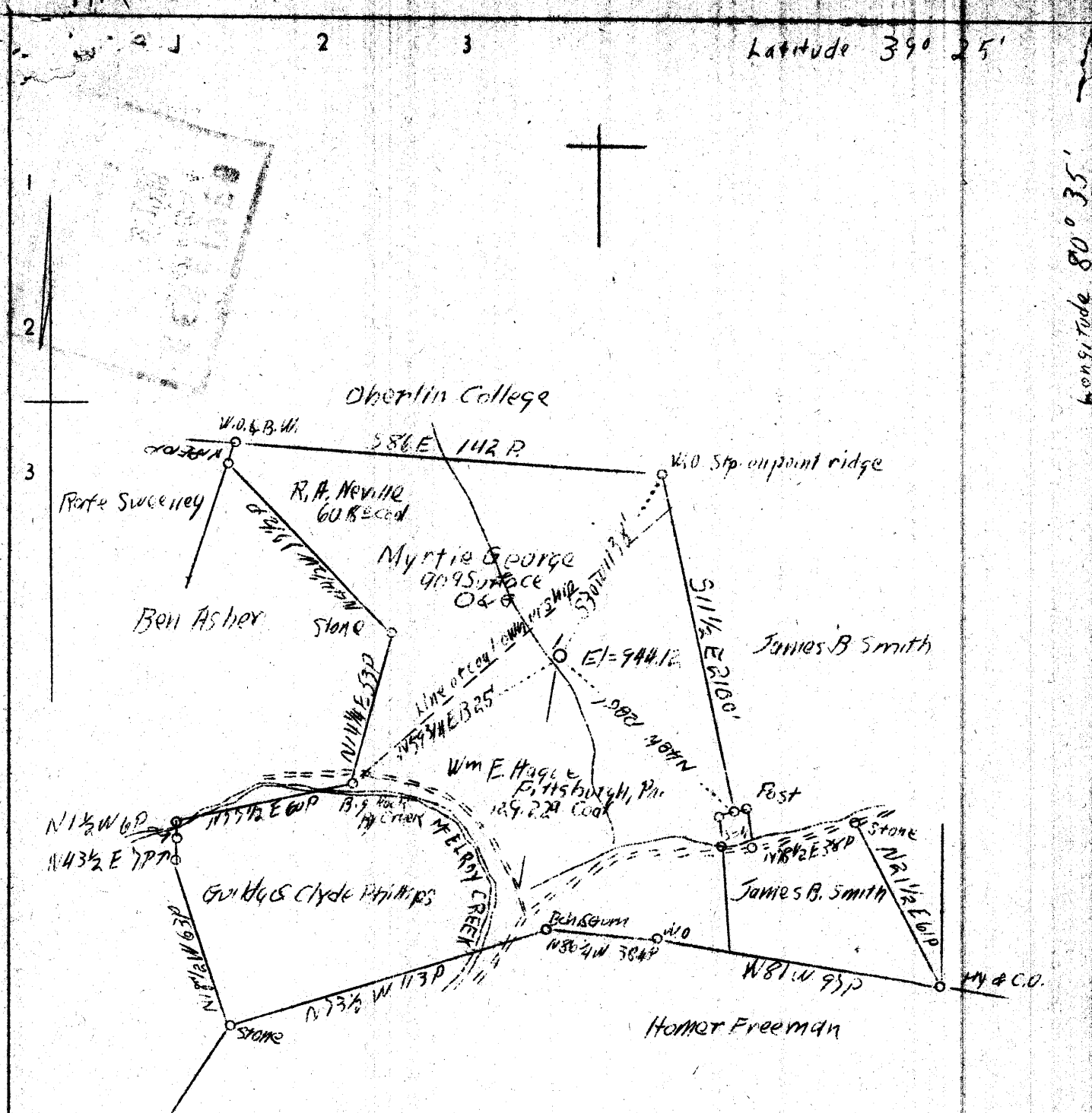


Latitude 39° 25'

Longitude 80° 35'



Surface: Myrtle George
Center Point, W. Va.
Coal: Wm E. Hague
Pittsburgh, Pa.

Well to be 75 P.

0.9 S
3.5 W

Company	South Penn Oil Co.
Address	411 Seventh Ave., Pittsburgh, Pa.
Farm	Silas Langfitt
Tract Acres	258 Lease No. 944
Well (Farm) No.	1 Serial No.
Quadrangle	Centerpoint
County	Doddridge
District	McClellan
Engineer	E.C. Tabler
Engineer's Registration No.	
File No.	Drawing No.
Date	April 12, 1938 Scale 1"=300'

STATE OF WEST VIRGINIA
Department of Mines
OIL AND GAS DIVISION
CHARLESTON

WELL LOCATION MAP

File No. Dod-218-A

Denotes location of well on United States Topographic Maps, scale 1 to 62,500, latitude and longitude lines being represented by border lines as shown.

Denotes one inch spaces on border line of original tracing.

WEST VIRGINIA DEPARTMENT OF MINES
OIL AND GAS DIVISION

173

WELL RECORD

Permit No. 200-218-A

Oil or Gas Well OIL
(Kind)

Company SOUTH PENN OIL COMPANY
 Address 411 Seventh Ave., Pittsburgh, Pa.
 Farm Silas Langfitt Acres 258
 Location (waters) - - -
 Well No. 1 Elev. 944.12'
 District McClellan County Doddridge
 The surface of tract is owned in fee by Myrtle George
Center Point Address W. Va.
 Mineral rights are owned by S. Benton Langfitt et al
 Address Parkersburg, W. Va.
 Drilling commenced May 27, 1892
 Drilling completed Oct. 5, 1892
 Date shot See below Depth of shot
 Open Flow /10ths Water in Inch
 /10ths Merc. in Inch
 Volume Cu. Ft.
 Rock Pressure lbs. hrs.
 Oil 300 bbls., 1st 24 hrs.
 Fresh water feet feet
 Salt water feet feet

Casing and Tubing	Used in Drilling	Left in Well	Packers
Size			
16			Kind of Packer
13	21		
10	255		Size of
7-5/8	1046		
6 5/8			Depth set
5 5/8	1866		
3			Perf. top
2			Perf. bottom
Liners Used			Perf. top
			Perf. bottom

CASING CEMENTED SIZE No. FT. Date
 - (Est.)
 COAL WAS ENCOUNTERED AT 535 FEET 60 INCHES
 FEET INCHES FEET INCHES
 FEET INCHES FEET INCHES

Formation	Color	Hard or Soft	Top	Bottom	Oil Gas or Water	Depth Found	Remarks
Pittsburgh Coal		(Est.)	535	540			
Salt Sand		(Est.)	1408	1561			
Big Injun			1912 ?				
Total Depth				2002			

Shot Record.

10-11-97 20 qt.
 6-26-00 20 "
 11-17-03 24 "
 3-18-05 30 "
 8-2-06 60 "
 9-17-07 60 "
 5-31-23 70 "



