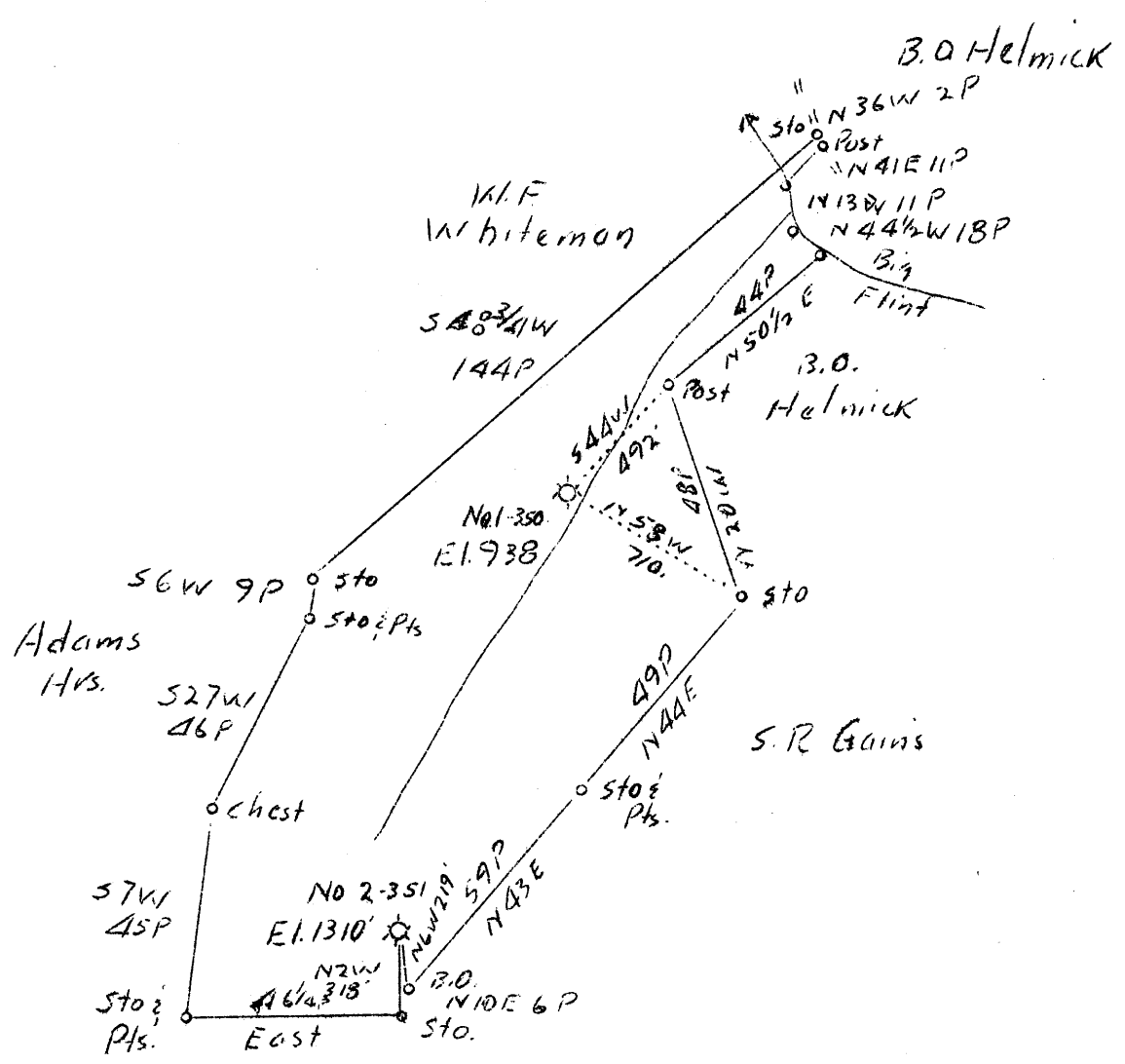


LATITUDE 39° 20'

LONGITUDE 80° 35'



J. M. Martin

3.98 W  
0.8 S

7.5 loc  
0.71 S 3920  
1.97 W 803730  
cla 9/3/38

calc 15 loc  
0.71 S  
4.20 W

Abct

Company	Carnegie Natural Gas Co.
Address	Pittsburgh, Penna.
Farm	A.J. Gaskins
Tract	one Acres 63 Lease No. E-4926-13
Well (Farm) No.	1 Serial No. 350
Elevation (Spirit Level)	938'
Quadrangle Centerpoint	SC
County	Doddridge District Grant
Engineer	D.T. Britton
Engineer's Registration No.	
File No.	Drawing No.
Date	10-26-1937 Scale 1"-40 P. 660'

STATE OF WEST VIRGINIA  
Department of Mines  
OIL AND GAS DIVISION  
CHARLESTON

WELL LOCATION MAP  
File No. 000-197A

+ Denotes location of well on United States Topographic Maps, scale 1 to 62,500, latitude and longitude lines being represented by border lines as shown.

— Denotes one inch spaces on border line of original tracing.