

km

0 1 2 3

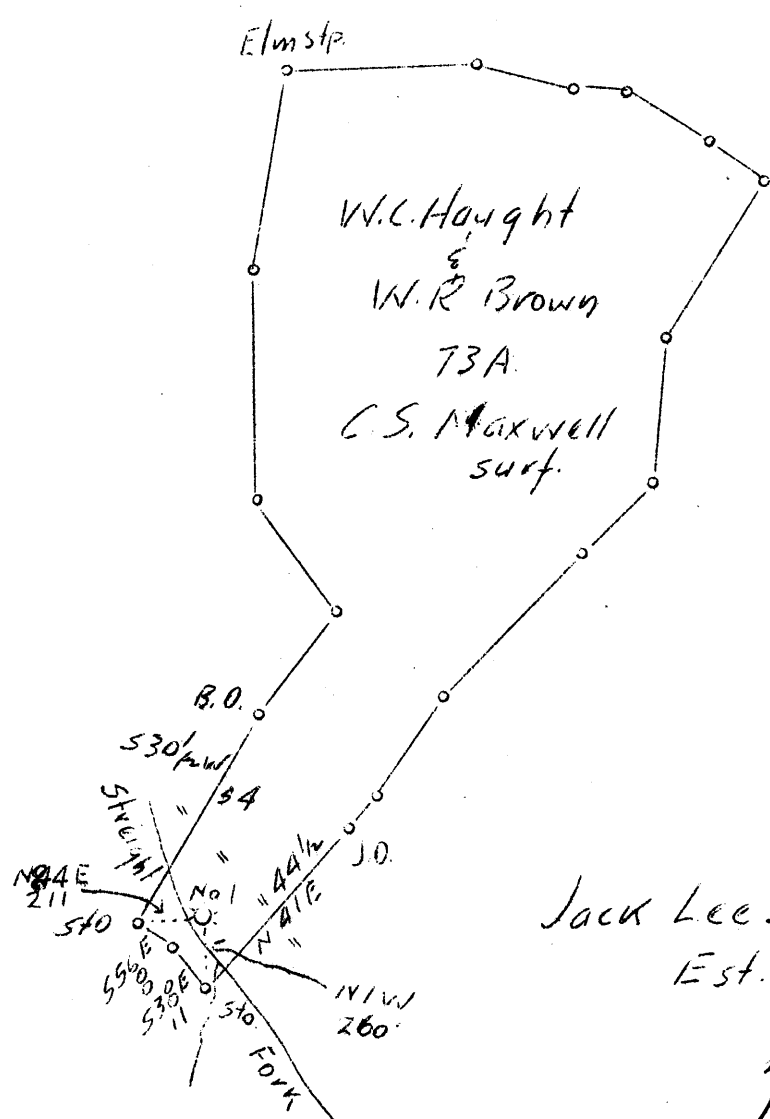
LATITUDE 39° 10'

LONGITUDE 80° 45'



W.C. Haught

Ira Cox



Jack Leeson Est.

4.48W
1.45S

A b d.

Company	Chas. W. Loughery, Agt.
Address	Clarksburg, W. Va.
Farm	W.C. Haught & W.R. Brown
Tract	One Acres 73 Lease No.
Well (Farm) No.	One Serial No.
Elevation (Spirit Level)	789
Quadrangle	Holbrook FC.
County	Doddridge District Southwest
Engineer	J.M. Martin
Engineer's Registration No.	84
File No.	Drawing No.
Date	Nov. 5, 1937 Scale 1"=660'

STATE OF WEST VIRGINIA
Department of Mines
OIL AND GAS DIVISION
CHARLESTON

WELL LOCATION MAP

File No. DODD-195A

+ Denotes location of well on United States Topographic Maps, scale 1 to 62,500, latitude and longitude lines being represented by border lines as shown.

— Denotes one inch spaces on border line of original tracing.