

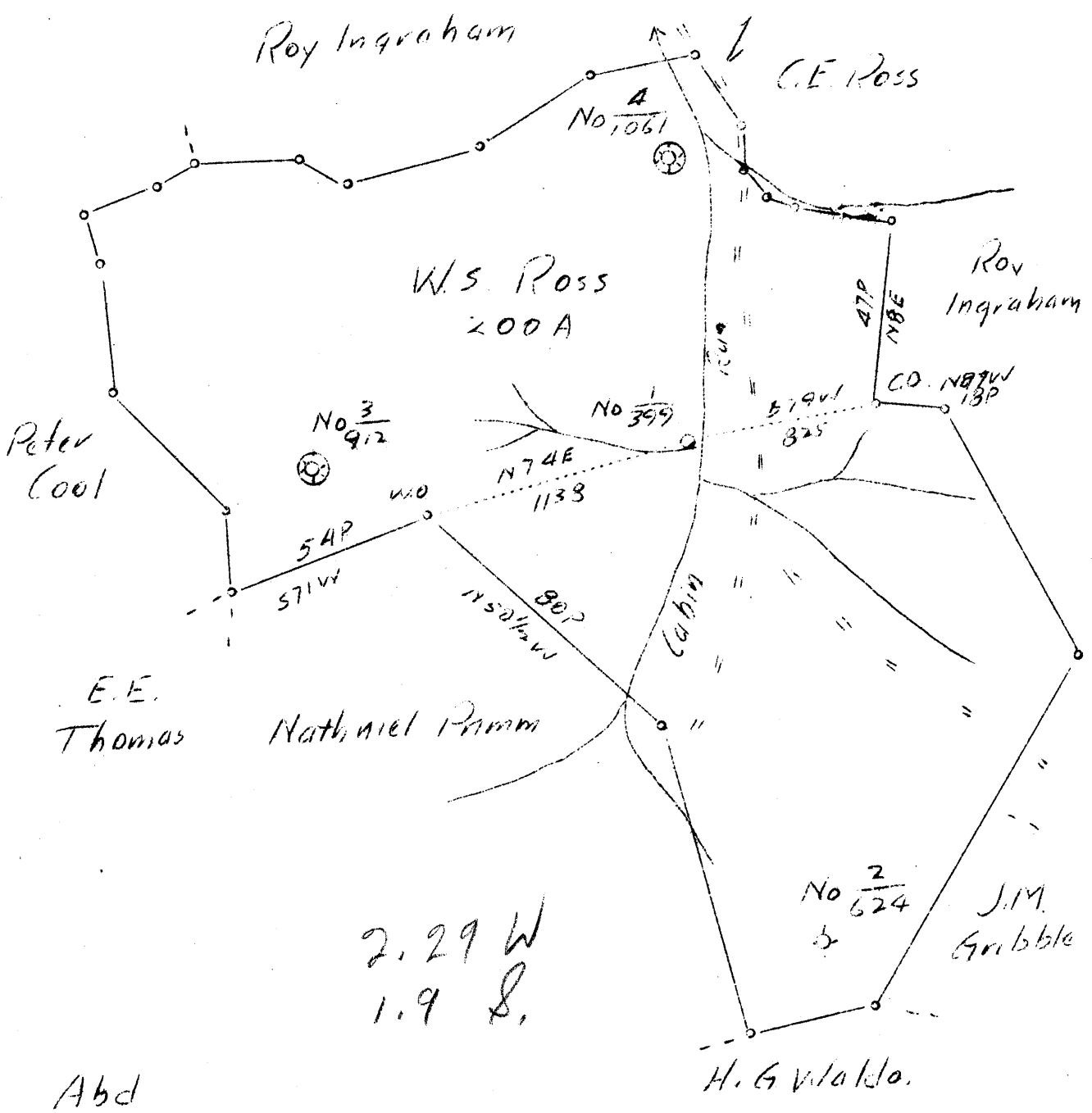
0 1 2 3 LATITUDE 39° 15'

1

2

3

LONGITUDE 80° 30'



Company	Carnegie Nat. Gas Co.
Address	Pittsburgh, Pa.
Farm	W.S. Ross
Tract 1	Acres 200 Lease No. E-8472-
Well (Farm) No. 1	Serial No. 399 11
Elevation (Spirit Level)	859'
Quadrangle	Holbrook N.G.
County	Doddridge District Central
Engineer	D.T. Britton
Engineer's Registration No.	
File No.	Drawing No.
Date 10-11-1937	Scale 1"-40 P.-660'

STATE OF WEST VIRGINIA
 Department of Mines
 OIL AND GAS DIVISION
 CHARLESTON

WELL LOCATION MAP
 File No. DOD-194A

+ Denotes location of well on United States Topographic Maps, scale 1 to 62,500, latitude and longitude lines being represented by border lines as shown.

- Denotes one inch spaces on border line of original tracing.