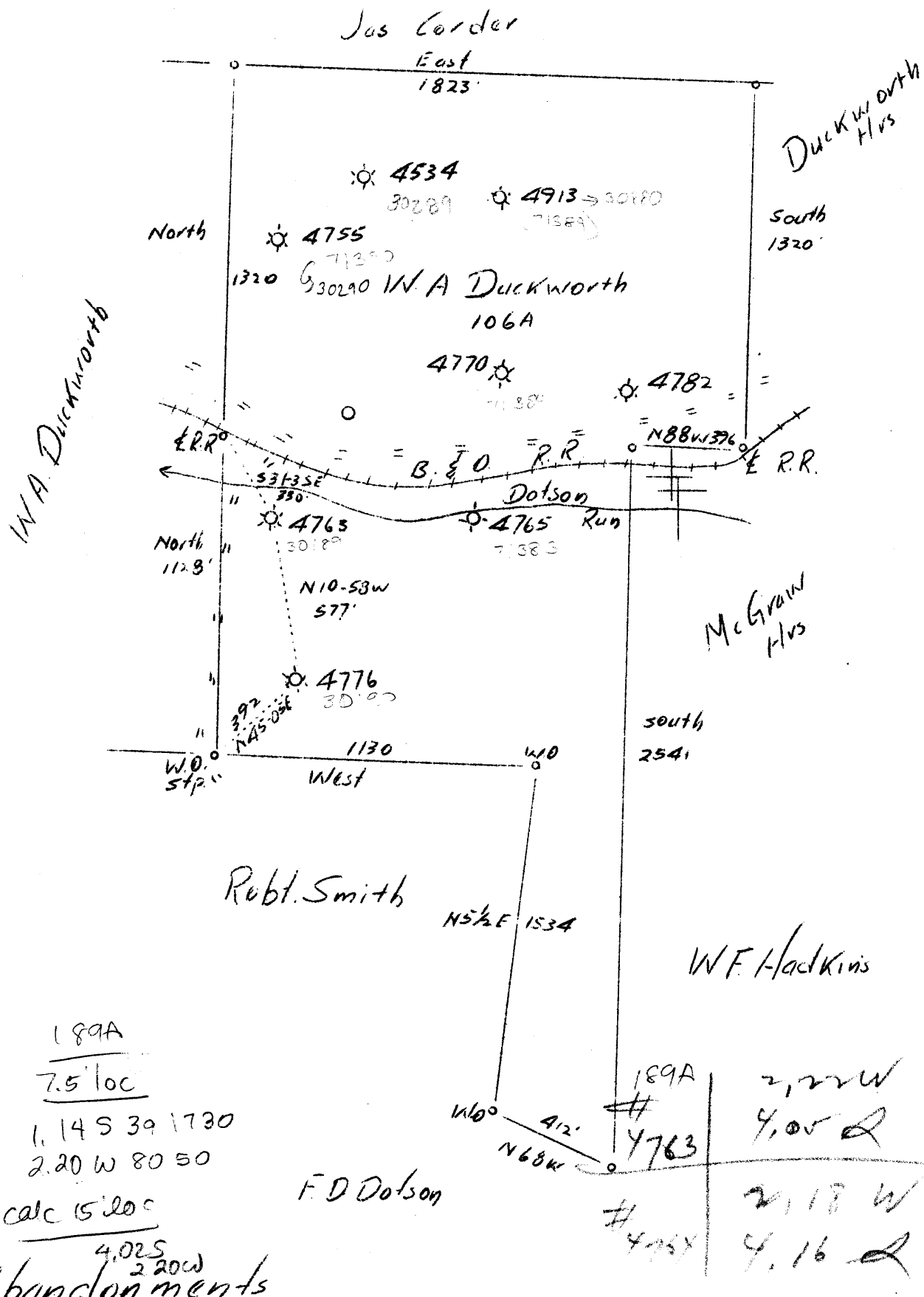


M

LATITUDE 39° 20'

LONGITUDE 80° 50'



Company Philadelphia Oil Co.
 Address 608 Union Bank, Clarksburg, W.Va.
 Farm W.A. Duckworth
 Tract Acres 106 Lease No. 7361
 Well (Farm) No. 487 Serial No. 4763-4776
 Elevation (Spirit Level) 898 L - 759 L
 Quadrangle West Union **(50)**
 County Doddridge District Central
 Engineer James R. Jeffries
 Engineer's Registration No.
 File No. Drawing No.
 Date 8-3-37 Scale 1"=500'

STATE OF WEST VIRGINIA
 Department of Mines
 OIL AND GAS DIVISION
 CHARLESTON

WELL LOCATION MAP

File No. DOD-187A-189A
 (4763) 189A

+ Denotes location of well on United States Topographic Maps, scale 1 to 62,500, latitude and longitude lines being represented by border lines as shown.

— Denotes one inch spaces on border line of original tracing.

WEST VIRGINIA DEPARTMENT OF MINES
OIL AND GAS DIVISION

156

WELL RECORD

Permit No. D88-189-A

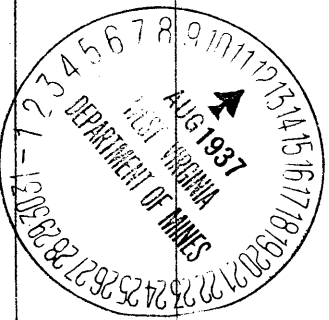
Oil or Gas Well Oil
(Kind)

Company Philadelphia Oil Company.
Address Clarksburg, West Va.
Farm W. A. Duckworth Acres 150
Location (waters) West Union - S/E. 3/3
Well No. 4763 Elev 899
District Central County Doddridge
The surface of tract is owned in fee by W.A. Duckworth
Address Duckworth, W. Va.
Mineral rights are owned by W. A. Duckworth et ux
Duckworth, W. Va. Address _____
Drilling commenced April 16th, 1920
Drilling completed May 26th, 1920
Date shot 5/28/1920 Depth of shot 1880-1913
Open Flow /10ths Water in _____ Inch
/10ths Merc. in _____ Inch
Volume _____ Cu. Ft.
Rock Pressure _____ lbs. _____ hrs.
Oil _____ bbls., 1st 24 hrs.
Fresh water 1765 feet _____ feet
Salt water _____ feet _____ feet

Casing and Tubing	Used in Drilling	Left in Well	Packers
Size			
16			Kind of Packer
13			
10	<u>465</u>		Size of
8 1/4	<u>978</u>	<u>978</u>	
6 5/8	<u>1840</u>	<u>1840</u>	Depth set
5 3/16			
3			Perf. top
2			Perf. bottom
Liners Used			Perf. top
			Perf. bottom

CASING CEMENTED _____ SIZE _____ No. FT. _____ Date _____
COAL WAS ENCOUNTERED AT 565 FEET 36 INCHES
_____ FEET _____ INCHES _____ FEET _____ INCHES
_____ FEET _____ INCHES _____ FEET _____ INCHES

Formation	Color	Hard or Soft	Top	Bottom	Oil Gas or Water	Depth Found	Remarks
Slate&Shells			0	465			
Sand			465	490			
Lime&Slate			490	565			
Pgh. Coal			565	568			
Lime			568	593			
Slate&Shells			593	700			
Red Rock			700	820			
Slate			820	875			
Sand			875	910			
Slate&Shells			910	1020			
Slate			1020	1060			
Red Rock			1060	1068			
Sand			1068	1183			
Lime&Slate			1183	1365			
1st. Salt Sand			1365	1425			
Slate			1425	1445			
2nd. Salt Sand			1445	1525			
Slate			1525	1550			
3rd. Salt Sand			1550	1595			
Lime&Slate			1595	1755			
Sand			1755	1775			
Slate			1775	1785	Water	1765'	
Lime			1785	1795			
Slate			1795	1805			
Big Lime			1805	1880			
Big Injun Sand			1880		Oil	1896-1902'	
Total Depth				1913'			



FEB - 1938

Formation	Color	Hard or Soft	Top	Bottom	Oil, Gas or Water	Depth Found	Remarks

Date **July 29th, 1937**, 19.....

APPROVED..... **Philadelphia Oil Company**, Owner

By..... *F. E. [Signature]*
(Title)

W. A. DUCKWORTH NO. 1

LL.

No. 150 O.F.-Doddridge.

Central District, Doddridge County, W. Va.
By Philadelphia Oil Co., Clarksburg, W. Va.
On 150 acres; West Union S/E 3/3 Quadrangle.
Elevation, 899' L.

Dodd 189A

Surface owned by W. A. Duckworth, Duckworth, W. Va., and minerals by
W. A. Duckworth et ux, Duckworth, W. Va.

Drilling commenced April 16, 1920; completed, May 26, 1920.

Shot May 28, 1920, at 1880-1913'.

Salt water at 1765'.

10" casing, 465' (pulled); 8 $\frac{1}{4}$ " , 978'; 6 $\frac{3}{8}$ " , 1840'.

Coal was encountered at 565-568'.

Oil well. Abandonment reported to Dept. of Mines July 29, 1937.

Record to RCT from D. G. Courtney 2-1-38.

	Top.	Bottom.
Slate and shells	0	465
Sand	465	490
Lime and slate	490	565
Pittsburgh Coal	565	568
Lime	568	593
Slate and shells	593	700
Red rock	700	820
Slate	820	875
Sand	875	910
Slate and shells	910	1020
Slate	1020	1060
Red rock	1060	1068
Sand	1068	1183
Lime and slate	1183	1365
1st Salt Sand	1365	1425
Slate	1425	1445
2nd Salt Sand	- 1445	1525
Slate	1525	1550
3rd Salt Sand	1550	1595
Lime and slate	1595	1755
Sand	1755	1775
Slate (water, 1765')	1775	1785
Lime	1785	1795
Slate	1795	1805
Big Lime	1805	1880
Big Injun Sand (oil, 1896-1902')	1880	
Total depth		1913