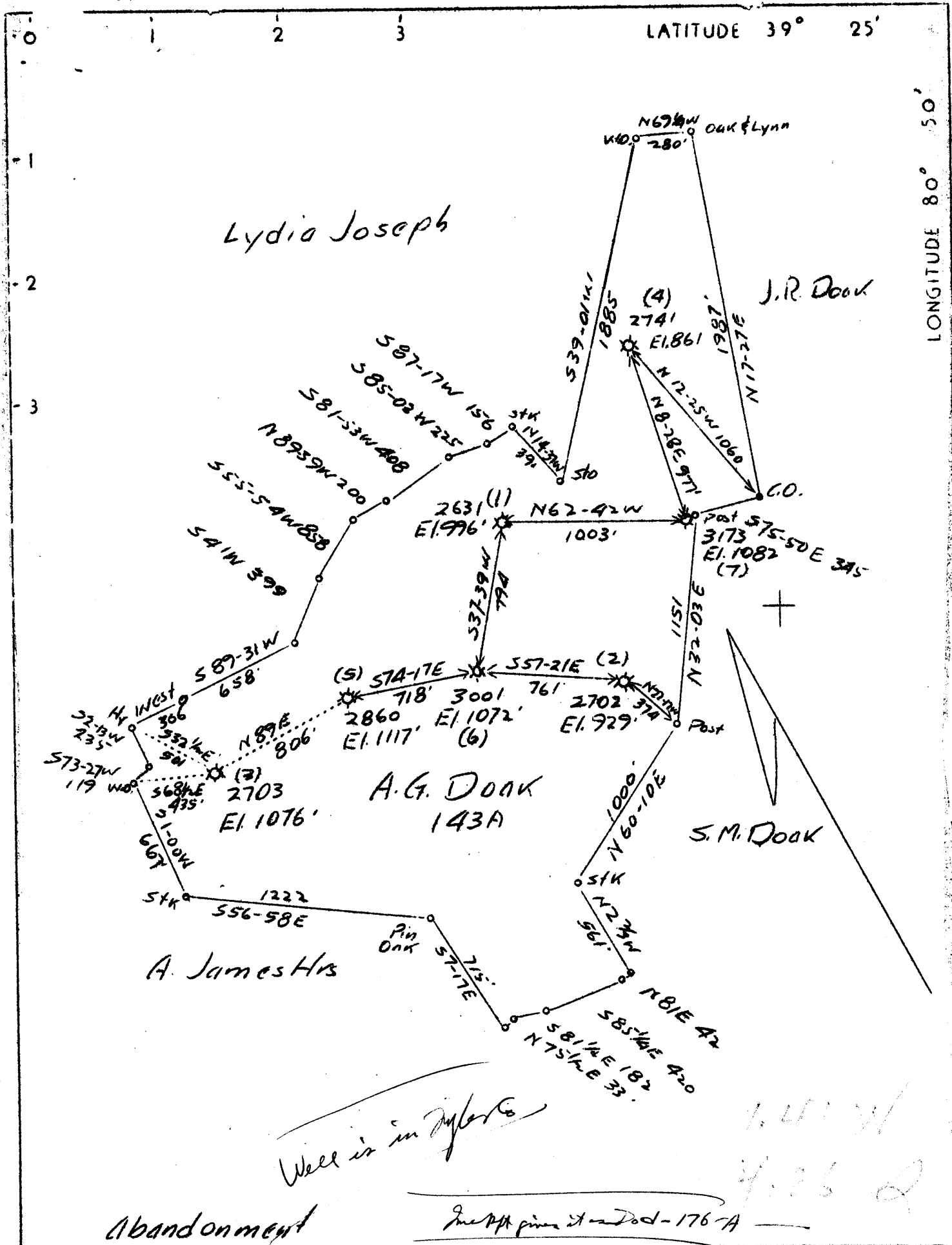


m



Abandonment

Insert from stand - 176 A

Company	Hope Natural Gas Co.
Address	Clarksburg, W.Va.
Farm	A. Gorrell Doak
Tract	Acres 143 Lease No.
Well (Farm) No.	3 Serial No. 2703
Elevation (Spirit Level)	1076'
Quadrangle	West Union
County	Tyler District Centerville
Engineer	S.H. Bradley
Engineer's Registration No.	135
File No.	Drawing No.
Date	6-14-1937 Scale 1"-40 Poles

STATE OF WEST VIRGINIA
 Department of Mines
 OIL AND GAS DIVISION
 CHARLESTON

WELL LOCATION MAP
 File No. DOB-176A

+ Denotes location of well on United States Topographic Maps, scale 1 to 62,500, latitude and longitude lines being represented by border lines as shown.

— Denotes one inch spaces on border line of original tracing.

140 ✓

WEST VIRGINIA DEPARTMENT OF MINES
OIL AND GAS DIVISION

WELL RECORD

Permit No. 220-176-A

Oil or Gas Well Gas
(Kind)

Company Hope Natural Gas Company
 Address Clarksburg, W. Va.,
 Farm A. Gorrell Doak Acres 143
 Location (waters) Middle Island Creek
 Well No. 2703 Elev. 1078
 District West Union County Doddridge
 The surface of tract is owned in fee by.....
 Address.....
 Mineral rights are owned by.....
 Address.....
 Drilling commenced 10-9-1912
 Drilling completed 10-22-1912
 Date shot Not shot Depth of shot.....
 Open Flow /10ths Water in.....Inch
 /10ths Merc. in.....Inch
 Volume.....Cu. Ft.
 Rock Pressure.....lbs.....hrs.
 Oil.....bbls., 1st 24 hrs.
 Fresh water None recorded feet.....feet
 Salt water None recorded feet.....feet

Casing and Tubing	Used in Drilling	Left in Well	Packers
Size			Kind of Packer.....
16.....			
13.....	148	148	
10.....			Size of.....
8 1/4.....			
6 5/8.....	1970	1970	Depth set.....
5 3/16.....			
3.....			Perf. top.....
2.....			Perf. bottom.....
Liners Used.....			Perf. top.....
			Perf. bottom.....

CASING CEMENTED.....SIZE.....No. FT.....Date
Not cemented
 COAL WAS ENCOUNTERED AT 225 FEET 24 INCHES
690 FEET 12 INCHES.....FEET.....INCHES
 FEET.....INCHES.....FEET.....INCHES

Formation	Color	Hard or Soft	Top	Bottom	Oil Gas or Water	Depth Found	Remarks
Native Coal			225	227			
Pittsburgh Coal			690	691			
Little Dunkard Sand			1008	1023			
Slate			1023	1028			
Sand			1028	1056	Show Oil	1038	
Big Dunkard Sand			1100	1220			
Gas Sand			1260	1280			
First Salt Sand			1295	1345			
Second Salt Sand			1410	1550			
Maxon Sand							
Little Lime			1890	1905			
Pencil Cave			1905	1919			
Big Lime			1919	1997			
Big Injun Sand			1997	2110	Gas	2080-2085	
Total Depth				2123			

West Union District, Doddrige County, W. Va.

By Hope Natural Gas Co., Clarksburg, W. Va.

On 143 acres, on Middle Island Creek.

Elevation, 1076' L.

Drilling commenced Oct. 9, 1912; completed, Oct. 22, 1912.

Well was not shot.

No water recorded.

13" casing, 148'; 6", 1970'.

Casing not cemented.

Coal was encountered at 225-227 and 690-691'.

Gas well. Abandonment reported to Dept. of Mines June 18, 1937.

Record to RCF from Mrs. Griffith 7-24-37.

	Top.	Bottom.
Native coal	225	- 227
Pittsburgh Coal	690	- 691
Little Dunkard Sand	1008	- 1023
Slate	1023	- 1028
Sand (show oil, 1038')	1028	- 1056
Big Dunkard Sand	1100	- 1220
Gas Sand	1260	- 1280
First Salt Sand	1295	- 1345
Second Salt Sand	1410	- 1550
Maxton Sand
Little Line	1890	- 1905
Pencil Cave	1905	- 1919
Big Line	1919	- 1997
Big Injun Sand (gas, 2080-2085')	1997	- 2110
Total depth		2123