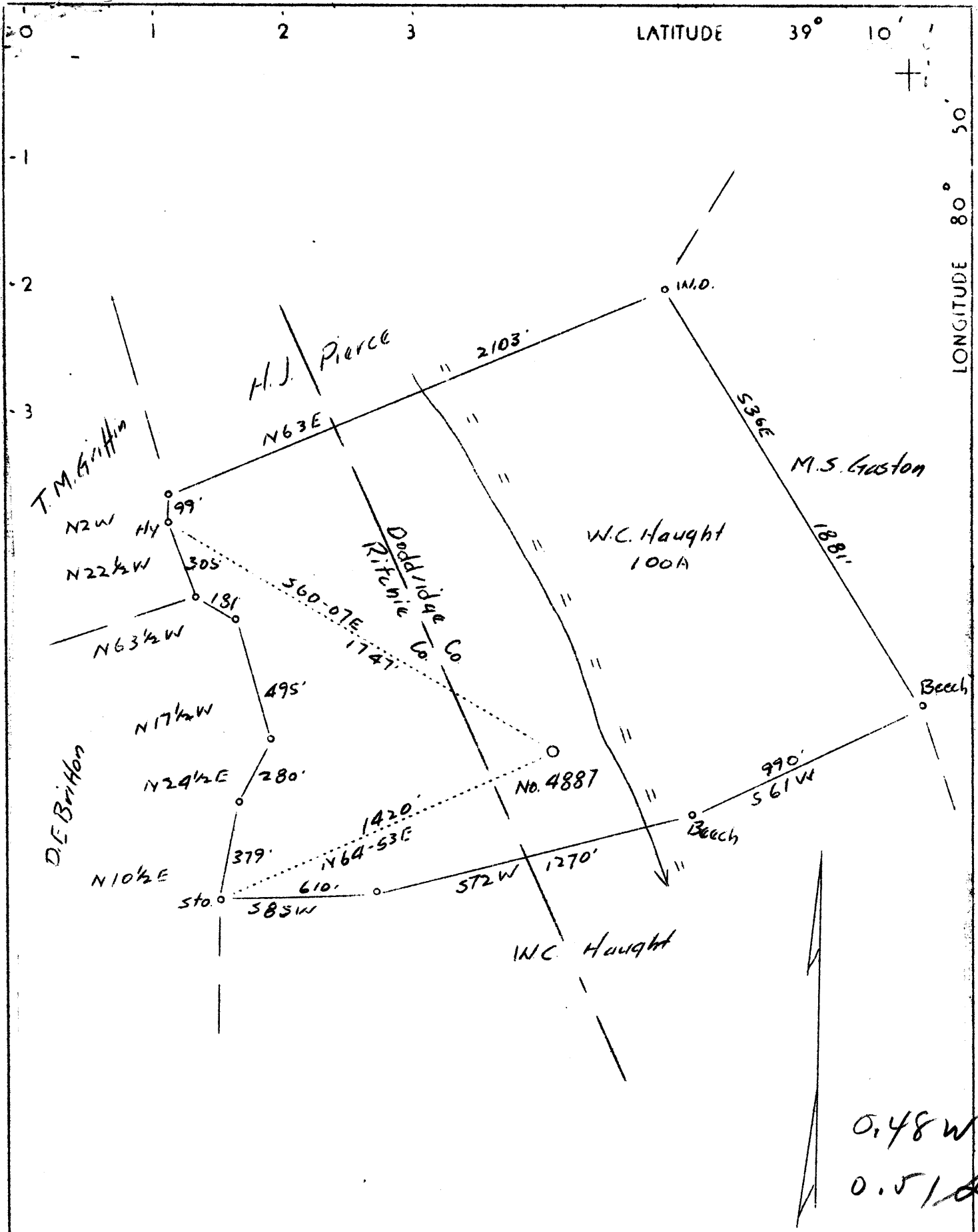



M



Abandonment

Company	Pittsburgh & W. Va. Gas Co
Address	Union Bank Bldg., Clarksburg, W.Va.
Farm	Henry Hess
Tract	Acres 100 Lease No. 7712
Well (Farm) No.	1 Serial No. 4887
Elevation (Spirit Level)	991-L
Quadrangle	Holbrook N. E. 3 ² 
County	Doddridge District Southwest
Engineer	James D. Jeffries
Engineer's Registration No.	
File No.	Drawing No.
Date	5-4-37 Scale 1" - 500'

STATE OF WEST VIRGINIA
 Department of Mines
 OIL AND GAS DIVISION
 Charleston

WELL LOCATION MAP

File No. DOD-170A

Denotes location of well on U. S. Topographic Maps, scale 1 to 62,500 latitude and longitude lines being represented by border lines as shown.

Denotes one inch spaces on border line of original tracing.

WEST VIRGINIA DEPARTMENT OF MINES
OIL AND GAS DIVISION

160

WELL RECORD

Permit No. **000-170-A**
Drilled prior to permit.

Oil or Gas Well **Gas**
(Kind)

Company **Pittsburgh & West Va Gas Company.**

Address **Clarksburg, West Va.**

Farm **Henry Hess**

Location (waters) **Holbrook- N/E. 3-2** Acres

Well No. **4887** Elev. **991**

District **Southwest** County **Doddridge**

The surface of tract is owned in fee by **W. C. Haught**

Address **Oxford, W.Va.**

Mineral rights are owned by **W. C. Haught**

Address **Oxford, W.Va.**

Drilling commenced **June 13th, 1924**

Drilling completed **July 4th, 1924**

Date shot..... Depth of shot.....

Open Flow /10ths Water in..... Inch

/10ths Merc. in..... Inch

Volume..... Cu. Ft.

Rock Pressure..... lbs..... hrs.

Oil..... bbls., 1st 24 hrs.

Fresh water..... feet..... feet

Salt water..... feet..... feet

Casing and Tubing	Used in Drilling	Left in Well	Packers
Size			
16.			Kind of Packer
13. wood	16		
10.	285	285	Size of
8 1/4.	910	910	
6 5/8.	1550	1550	Depth set
5 3/16.	1784	1784	
3.			Perf. top
2.			Perf. bottom
Liners Used			Perf. top
			Perf. bottom

CASING CEMENTED..... SIZE..... No. FT..... Date

COAL WAS ENCOUNTERED AT..... FEET..... INCHES

..... FEET..... INCHES..... FEET..... INCHES

..... FEET..... INCHES..... FEET..... INCHES

Formation	Color	Hard or Soft	Top	Bottom	Oil Gas or Water	Depth Found	Remarks
Clay	Yellow	Soft	30	30			
Sand	Dark	Hard	30	80			
Red Rock	Red	Soft	80	130			
Lime		Hard	130	200			
Red Rock	Red	Soft	200	280			
Lime		Hard	280	330			
Red Rock	Red	Soft	330	360			
Lime		Hard	360	500			
Red Rock	Red	Soft	500	525			
Lime		Hard	525	700			
Red Rock	Red	Soft	700	710			
Lime	Dark	Hard	710	740			
Slate	Dark	"	740	750			
Lime	Dark	"	750	775			
Red Rock	Red	Soft	775	830			
Lime	Dark	Hard	830	880			
Slate	"	Soft	880	900			
Sand (B. Dark White)		Hard	900	945			
Slate			945	1090			
Gas Sand	White		1090	1145			
Slate			1145	1195			
Sand (1st. Salt White)		Hard	1195	1280			
Slate			1280	1484			
3rd. Salt	Dark		1484	1518	Gas	1510-1515'	
Slate	"	Soft	1518	1550			
Slate	"	Hard	1550	1590			
Sand	White	"	1590	1660			
Slate	Black		1660	1690			
Maxon Sand	White	Hard	1690	1710			
Slate	Black		1710	1715			
Lime	Dark	Hard	1715	1735			
Lime	Dark	Broken	1735	1740			
L. Lime	White	Gritty	1740	1755			
Slate	Black	Soft	1755	1759			
Big Lime	Gray	Hard	1759	1825			
Big Injun	White	Hard	1825	1898	Gas	1825-26	
Slate	Black	Soft	1898	1905	Gas	1832-40	
Total Depth				1905			

FEB - 1929

Southwest District, Doddridge County, W. Va.

By Pittsburgh & W. Va. Gas Co., Clarksburg, W. Va.

On Holbrook W/E 3-2 Quadrangle.

Elevation, 991' L.

Surface and minerals owned by W. C. Haught, Oxford, W. Va.

Drilling commenced June 13, 1924; completed, July 4, 1924.

13" wood conductor, 16' (pulled); 10" casing, 285'; 8 1/2", 910';
6 1/2", 1550'; 5 1/2", 1784'.

Gas well. Abandonment reported to Dept. of Mines May 3, 1937.

Record to ROT from D. G. Courtney 2-1-38.

	Top.	Bottom.
Clay, yellow, soft	0	30
Sand, dark, hard	30	80
Red rock, soft	80	130
Lime, hard	130	200
Red rock, soft	200	280
Lime, hard	280	330
Red rock, soft	330	360
Lime, hard	360	500
Red rock, soft	500	525
Lime, hard	525	700
Red rock, soft	700	710
Lime, dark, hard	710	740
Slate, dark, hard	740	750
Lime, dark, hard	750	775
Red rock, soft	775	830
Lime, dark, hard	830	880
Slate, dark, soft	880	900
Big Dunkard Sand, white, hard	900	945
Slate	945	1090
Gas Sand, white	1090	1145
Slate	1145	1195
1st Salt Sand, white, hard	1195	1280
Slate	1280	1484
3rd Salt Sand, dark (gas, 1510-1515')	1484	1518
Slate, dark, soft	1518	1550
Slate, dark, hard	1550	1590
Sand, white, hard	1590	1660
Slate, black	1660	1690
Maxton Sand, white, hard	1690	1710
Slate, black	1710	1715
Lime, dark, hard	1715	1735
Lime, dark, broken	1735	1740
Little Lime, white, gritty	1740	1755
Slate, black, soft	1755	1759
Big Lime, gray, hard	1759	1825
Big Injun Sand, white, hard (gas, 1825-26'; gas, 1832-40')	1825	1898
Slate, black, soft	1898	1905
Total depth		1905