

Latitude 39°25'00"

Longitude 88°40'00"

Longitude

+75'

Topo Location

7.5' Loc.	<u>2.135</u>	15' Loc.	<u>2.135</u>
	<u>0.91W</u>	(calc.)	<u>0.91W</u>

Company _____

Farm O.P. Weekley #3

15' Quad Center Point W1
(sec.)

7.5' Quad Center Point

District McClellan

WELL LOCATION PLAT

County 017 Permit 30109

Dodd 109A

McClellan District, Doddridge County, W. Va.
 By South Penn Oil Co., Chamber of Commerce Bldg., Pittsburgh, Pa.
 On 63 acres, surface owned by O. P. Weekley, R.F. D. No. 1,
 Morgansville, W. Va., and mineral rights by L. E. Mallory
 Estate, et al., %Tom. D. Mallory, Agent, Bradford, Pa.
 Elevation, 1056.76' L.
 10" casing, 402'; 8 $\frac{1}{2}$ " 1243'; 6-5/8" 2077'.
 Coal was encountered at 705-710'
 Abandonment reported to Dept. of Mines June 5, 1935.
 Producing hole.

	Top.	Bottom.
Pittsburgh Coal		705
Big Injun Sand (gas, 2075'; oil, 2169')		2065
Total depth		2193

SOUTH PENN. OIL
 Charter of Commerce Pl^l &
 Pittsburgh, Pa. Address

COMPLETION DATA SHEET
 NO 2
 FORMATION RECORD

Well No. 8- Mildred Ash Run.

Name	Color	Character	(Vol. Lbs. of Water)	Top	Bottom	Thickness	Total Depth	Remarks
Pittsburgh Coal				706				
Big Injan Sand			Gas Oil	2075				
				2169				
Total Depth							2169	

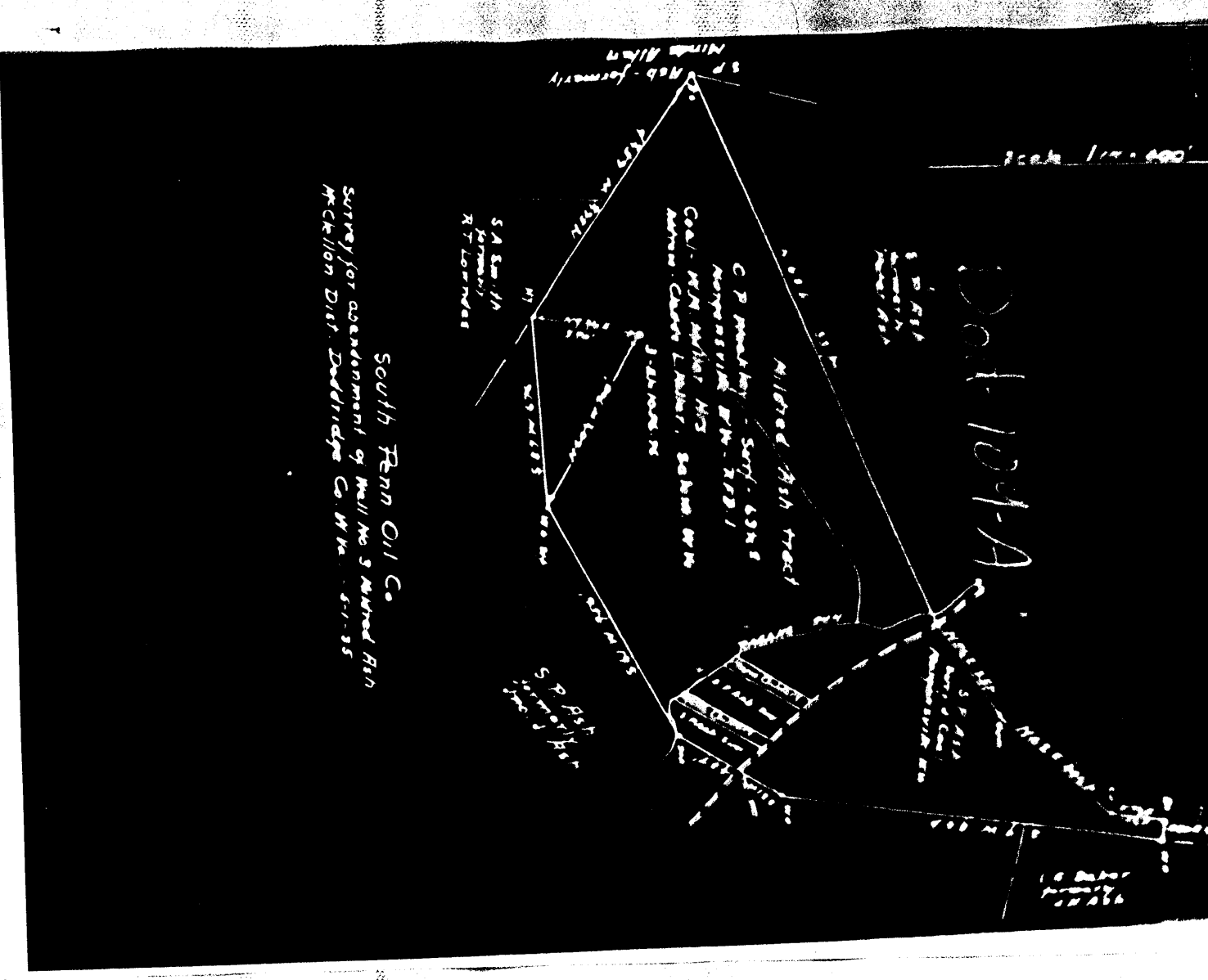
Well was not shot at feet; well was shot at feet.

Shot fresh water at feet; fresh water at feet.

Well was producing both.

June 5, 1935.

SOUTH PENN. OIL COMPANY,
 Stationers & Printers



South Penn Oil Co.
 Survey for abandonment of Well No. 8 Mildred Ash
 McKellion Dist. Daddridge Co. W. Va. 5-1-35

WEST VIRGINIA DEPARTMENT OF MINES
OIL AND GAS DIVISION

PRELIMINARY DATA SHEET NO. 1

Well No. 12A 115 A

Well No. 8

Company of Chamber of Commerce Bldg.
Pittsburgh, Pa.

Wetmore, Pa.

Wetmore, Pa.

County, West Virginia

Operator, Doderidge

The surface of the land owned by O. P. Wooley

and the mineral rights are owned by
W.P. No. 1, Morgantown, W. Va.

address, and the mineral rights are owned by
J. B. Mallory Estate et al

The oil and gas privileges are held under lease by the above named company, and this well is drilled under permit
issued by the West Virginia Department of Mines, Oil and Gas Division

Direction of surface at top of well 1056.76'

The number of feet of the different sized casings used in the well.

Feet	Size, etc.	Feet	Size, etc.	Feet	Size, etc.
402	10"	10"	8-1/4"	60 (9)	6-5/8"
1945	6-5/8"				
2077					

Coal was encountered at 705 feet, thickness 60 (9) inches, and at
feet; thickness inches; and at feet; thickness inches.
Lenses were used as follows: (Give details)

June 5, 1935.

Date

WEST VIRGINIA DEPARTMENT OF MINES
OIL AND GAS DIVISION

W. H. Miller holds,
o/o Claude T. Miller,
Salem, W. Va.

SOUTH PENN. OIL COMPANY
Pittsburgh, Pa.

Well and location

County

Well No. 8

Operator

STATE OF WEST VIRGINIA

COURT OF WETZEL

A. S. HIGHT

being first duly sworn according to law depose and say that they are experienced in the work of plugging
and filling oil and gas wells and were employed by South Penn. Oil Company well operator,
and participated in the work of plugging and filling the above well, that said work was commenced on the
4th day of October 1935, and that the well was plugged and filled in
the following manner:

Manner in which well was plugged:
Total depth 2160'. Filled with stone and red clay to 2077'. 6-5/8" casing would not pull, and was cut and 1249' pulled, leaving 828' in hole below cut. Filled with stone and red clay to 2045'. Set 6-5/8" wood plug at 2045' to 2042'. Set cement plug at 2042 to 2032'. Filled with stone and red clay to 1750'. Set 6-5/8" wood plug at 1750 to 1747'. Set cement plug at 1747 to 1737'. Filled with stone and red clay to 1500'. Set 6-5/8" wood plug at 1500 to 1497'. Set cement plug at 1497 to 1487'. 8-1/4" casing would not pull and was cut and 932' pulled, leaving 511' in hole below cut. Bridged hole at 870'. Filled with stone and red clay to 760'. 10" casing would not pull and was cut at 290' and found that it would pull; (Pittsburgh Coal 705'); set morning glory packer at 740' with 20' of 2" perforated pipe below packer and 2" vent pipe from packer to top of ground. Cemented vent pipe from 740' to 685'. Filled with stone and red clay to 402'. Pulled 290' of 10" casing, leaving 112' in hole below cut. Filled with stone and red clay solid from 402' to top of ground.

Description of monument: Erected monument at top of ground with closed top 2" perforated nipple in accordance with Rule 18, 1931 Regulations.
and that the work of plugging and filling said well was completed on the 13th day of December, 1935.
And further deposes that said

THE ABOVE INFORMATION PERTAINS TO THE WELL AND ITS LOCATION, AND THE DEPARTMENT OF MINES, OIL AND GAS DIVISION IS NOT RESPONSIBLE FOR THE ACCURACY OF THE INFORMATION CONTAINED HEREIN.