

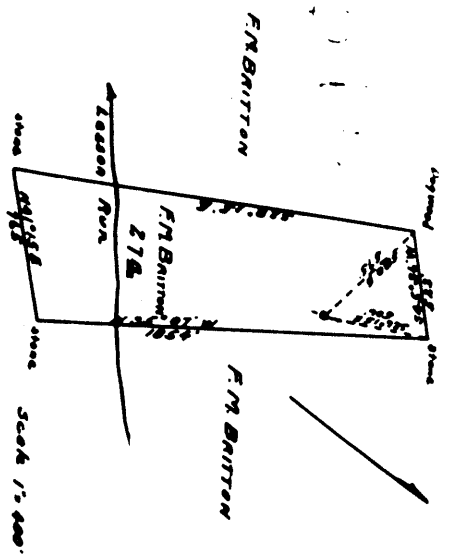
Lima Gas  
 Charleston, W. Va.  
 No. 1  
 1 section

COMPLETION DATA SHEET  
 No. 2  
 FORMATION RECORD

Depth	Color	Character	Pressure	Temp	Sp. Grav.	Gas	Oil	Water	Other
340									
360									
370									
1080									
1118									
1280									
1300									
1440									
1720									
1730									
1740									
1870									
1875									
2075									
2085									
2088									
Total depth									

DATE OF COMPLETION: \_\_\_\_\_  
 TIME OF DAY: \_\_\_\_\_  
 NAME OF OPERATOR: \_\_\_\_\_  
 NAME OF COMPANY: \_\_\_\_\_  
 NAME OF WELL: \_\_\_\_\_  
 NAME OF SECTION: \_\_\_\_\_  
 NAME OF TOWN: \_\_\_\_\_  
 NAME OF COUNTY: \_\_\_\_\_  
 NAME OF STATE: \_\_\_\_\_

Map showing location of Well No. 1 on  
 F. M. Britton Farm situated in Central  
 District Doddridge County, belonging  
 to Lima Gas Co. Charleston, W. Va.



I, N. M. McIVER, hereby certify this map  
 is true and correct, and shows the  
 required by the Dept. of Mines  
 W. M. McIVER  
 Surveyor  
 Subscribed and sworn to before me, a Notary  
 Public, this 22 day of October, 1928  
 W. M. McIVER, Notary Public

Corner  
 of  
 Pullman Blvd.

well NE corner  
 of Pullman Blvd.  
 but can not determine  
 which property + well

Dodd 92A

Central District, Doddridge County, W. Va.  
 By Lima Gas Co., Charleston, W. Va. (Clint Litton, Pres.)  
 On 27 acres, surface and mineral rights owned by F. M. Britton,  
 Oxford, W. Va.  
 Drilled in 1915.  
 No elevation given.  
 10" casing, 310'; 8 $\frac{1}{4}$ ", 1190'; 6-5/8", 1985'.  
 Abandonment reported to Dept. of Mines Oct. 22, 1934.  
 Producing hole.

	Top.	Bottom.
Sand	340	665
Sand	960	975
Dunkard Sand	1060	1085
Sand	1115	1145
Gas Sand	1250	1300
1st Salt Sand	1560	1640
2nd Salt Sand	1735	1800
Sand shell	1810	1900
Sandy lime	1940	1970
Big Lime	1979	2074
Big Injun Sand, to bottom	2074	2088

WEST VIRGINIA DEPARTMENT OF MINES  
 OIL AND GAS DIVISION  
 OIL AND GAS DIVISION

Plan No. 20  
 Date Issued, Jan 14, 1938  
 Location, Grant  
 District, Putnam  
 Section, 1  
 Township, 1  
 Range, 1  
 Meridian, 1

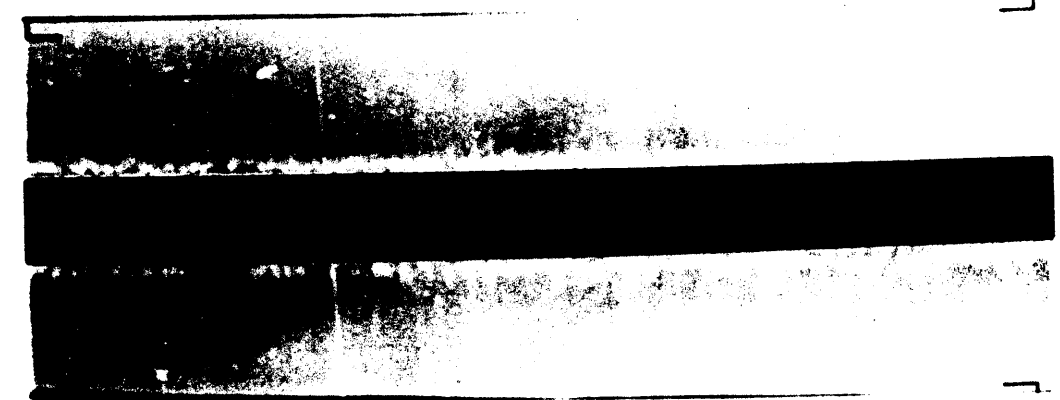
STATE OF WEST VIRGINIA

Approved by Z. B. Bellison  
 Director of Mines

This well has been left open for several years and the casing was filled for some distance from the top with pipe, wood, rocks and clay and was impossible to clean out. It was necessary to remove the casing to a depth of 150 feet and fill with cement. The casing was removed to a depth of 150 feet and the hole was packed with cement to a depth of 150 feet. Cemented to top.

and that the work of plugging and filling and was completed on the 14 day of September, 1938.

By Z. B. Bellison  
 Director of Mines



WEST VIRGINIA DEPARTMENT OF MINES  
 OIL AND GAS DIVISION  
 OIL AND GAS DIVISION

PRELIMINARY DATA SHEET NO. 1

Plan No. 20  
 Date Issued, Jan 14, 1938  
 Location, Grant  
 District, Putnam  
 Section, 1  
 Township, 1  
 Range, 1  
 Meridian, 1

This well has been left open for several years and the casing was filled for some distance from the top with pipe, wood, rocks and clay and was impossible to clean out. It was necessary to remove the casing to a depth of 150 feet and fill with cement. The casing was removed to a depth of 150 feet and the hole was packed with cement to a depth of 150 feet. Cemented to top.

and that the work of plugging and filling and was completed on the 14 day of September, 1938.

By Z. B. Bellison  
 Director of Mines