

Latitude 39° 22' 30"

80° 35' 00"

Longitude

75'
+

Topo Location

7.5' Loc. 1.895 15' Loc. 4.775
1.33W (calc.) 1.33W

Company _____ (2113)

Farm J.J. Downs #4

15' Quad Centipet C
(sec.)

7.5' Quad Salem

District McClellan

WELL LOCATION PLAT

County 017 Permit 30090

Dodd 90A

McClellan District, Doddridge County, W. Va.
 By The Manufacturers Light & Heat Co., 800 Union Trust Bldg.,
 Pittsburgh, Pa.

On 188 acres, surface owned by J. J. Downs, Mannington, W. Va.,
 and mineral rights by ML&H Co., Pgh., Pa.

Drilled prior to June 1, 1929.

Elevation, 1379' L.

10" casing, 252'; 8 1/4", 1343'; 6-5/8", 2127'.

Coal was encountered at 380-385 and 825-830'.

Abandonment reported to Dept. of Mines Sept. 17, 1934.

Gas well.

	Top.	Bottom.
Coal	380	385
Pittsburgh Coal	825	830
Big Dunkard Sand	1326	1355
Gas Sand	1440	1530
1st Salt Sand	1555	1650
2nd Salt Sand	1680	1710
3rd Salt Sand	1790	1860
Salt Sand	1880	1930
Maxton Sand	1985	2040
Little Lime	2070	2090
Pencil Cave	2090	2100
Big Lime	2100	2180
Big Injun Sand (gas at 2245-2300')	2180	2310
Squaw Sand	2330	2373
50-Ft. Sand	2725	2753
30-Ft. shells		
Gordon Stray shells		
Gordon Sand shells		
4th Sand	2945	2967
Total depth		2976

PLAT OF THE PROPOSED LAYOUT OF THE MAPS OF
THE MANUFACTURING DISTRICTS OF PITTSBURGH, PA.
ON THE 11th DAY OF MARCH 1862
LORDS IN CHIEF OF THE DISTRICT OF PITTSBURGH
1862

1862

1862

WILLIAM BAKER, JR.



THE DISTRICT OF PITTSBURGH
1862

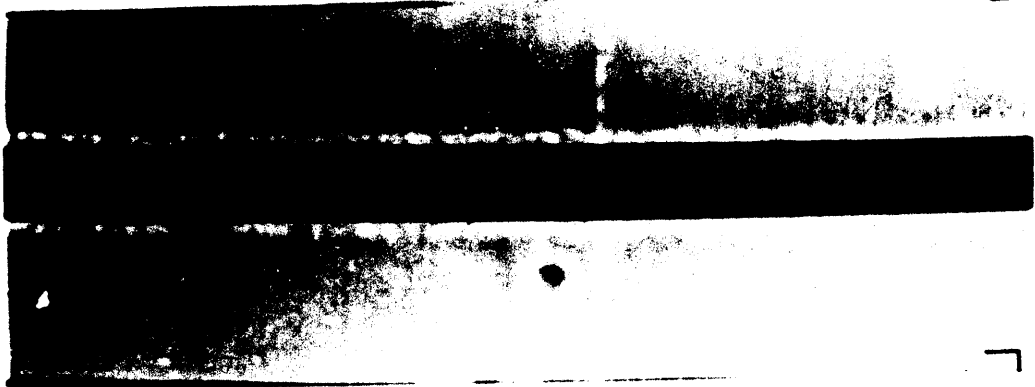
WEST VIRGINIA DEPARTMENT OF MINES
OIL AND GAS DIVISION

PRELIMINARY DATA SHEET NO. 1

Oil No. 14213

The Manufacturer Light & Heat Company of 800 Value Street Building
Pittsburgh, Pa. 15222
No. 14213
No. of the above sheet is equal to No. 14213
The Manufacturer Light & Heat Co., Pittsburgh, Pa.
No. of the production was last made known by the above named company and was on a certain date
No. of the production was last made known by the above named company of which on the date
No. of the production was last made known by the above named company of which on the date

Nov 70 107-28-282



THE MANUFACTURER LIGHT & HEAT COMPANY
800 Value Street Bldg., Pittsburgh, Pa. 15222
Oil No. 14213
COMPLETION DATA SHEET
NO. 2
FORMATION RECORD

Time	Color	Character	Pressure in lbs.	Flow in gals.	Temperature	Remarks
1:00	Dark		200	500	100	
1:05	Dark		150	1000	100	
1:10	Dark		100	1500	100	
1:15	Dark		50	2000	100	
1:20	Dark		50	2500	100	
1:25	Dark		50	3000	100	
1:30	Dark		50	3500	100	
1:35	Dark		50	4000	100	
1:40	Dark		50	4500	100	
1:45	Dark		50	5000	100	
1:50	Dark		50	5500	100	
1:55	Dark		50	6000	100	
2:00	Dark		50	6500	100	
2:05	Dark		50	7000	100	
2:10	Dark		50	7500	100	
2:15	Dark		50	8000	100	
2:20	Dark		50	8500	100	
2:25	Dark		50	9000	100	
2:30	Dark		50	9500	100	
2:35	Dark		50	10000	100	
2:40	Dark		50	10500	100	
2:45	Dark		50	11000	100	
2:50	Dark		50	11500	100	
2:55	Dark		50	12000	100	
3:00	Dark		50	12500	100	
3:05	Dark		50	13000	100	
3:10	Dark		50	13500	100	
3:15	Dark		50	14000	100	
3:20	Dark		50	14500	100	
3:25	Dark		50	15000	100	
3:30	Dark		50	15500	100	
3:35	Dark		50	16000	100	
3:40	Dark		50	16500	100	
3:45	Dark		50	17000	100	
3:50	Dark		50	17500	100	
3:55	Dark		50	18000	100	
4:00	Dark		50	18500	100	
4:05	Dark		50	19000	100	
4:10	Dark		50	19500	100	
4:15	Dark		50	20000	100	
4:20	Dark		50	20500	100	
4:25	Dark		50	21000	100	
4:30	Dark		50	21500	100	
4:35	Dark		50	22000	100	
4:40	Dark		50	22500	100	
4:45	Dark		50	23000	100	
4:50	Dark		50	23500	100	
4:55	Dark		50	24000	100	
5:00	Dark		50	24500	100	
5:05	Dark		50	25000	100	
5:10	Dark		50	25500	100	
5:15	Dark		50	26000	100	
5:20	Dark		50	26500	100	
5:25	Dark		50	27000	100	
5:30	Dark		50	27500	100	
5:35	Dark		50	28000	100	
5:40	Dark		50	28500	100	
5:45	Dark		50	29000	100	
5:50	Dark		50	29500	100	
5:55	Dark		50	30000	100	
6:00	Dark		50	30500	100	
6:05	Dark		50	31000	100	
6:10	Dark		50	31500	100	
6:15	Dark		50	32000	100	
6:20	Dark		50	32500	100	
6:25	Dark		50	33000	100	
6:30	Dark		50	33500	100	
6:35	Dark		50	34000	100	
6:40	Dark		50	34500	100	
6:45	Dark		50	35000	100	
6:50	Dark		50	35500	100	
6:55	Dark		50	36000	100	
7:00	Dark		50	36500	100	
7:05	Dark		50	37000	100	
7:10	Dark		50	37500	100	
7:15	Dark		50	38000	100	
7:20	Dark		50	38500	100	
7:25	Dark		50	39000	100	
7:30	Dark		50	39500	100	
7:35	Dark		50	40000	100	
7:40	Dark		50	40500	100	
7:45	Dark		50	41000	100	
7:50	Dark		50	41500	100	
7:55	Dark		50	42000	100	
8:00	Dark		50	42500	100	
8:05	Dark		50	43000	100	
8:10	Dark		50	43500	100	
8:15	Dark		50	44000	100	
8:20	Dark		50	44500	100	
8:25	Dark		50	45000	100	
8:30	Dark		50	45500	100	
8:35	Dark		50	46000	100	
8:40	Dark		50	46500	100	
8:45	Dark		50	47000	100	
8:50	Dark		50	47500	100	
8:55	Dark		50	48000	100	
9:00	Dark		50	48500	100	
9:05	Dark		50	49000	100	
9:10	Dark		50	49500	100	
9:15	Dark		50	50000	100	
9:20	Dark		50	50500	100	
9:25	Dark		50	51000	100	
9:30	Dark		50	51500	100	
9:35	Dark		50	52000	100	
9:40	Dark		50	52500	100	
9:45	Dark		50	53000	100	
9:50	Dark		50	53500	100	
9:55	Dark		50	54000	100	
10:00	Dark		50	54500	100	

Oil No. 14213
No. of the above sheet is equal to No. 14213
The Manufacturer Light & Heat Co., Pittsburgh, Pa.
No. of the production was last made known by the above named company and was on a certain date
No. of the production was last made known by the above named company of which on the date
No. of the production was last made known by the above named company of which on the date

Nov 70 107-28-282