

Latitude 39°17'30"

80°50'00"

Longitude

75'
+

Topo Location

7.5' Loc. 2.33S 15' Loc. 5.21S
0.51W (calc.) 0.51W

Company _____

Farm M. J. Cunningham

15' Quad West Union SE
(sec.)

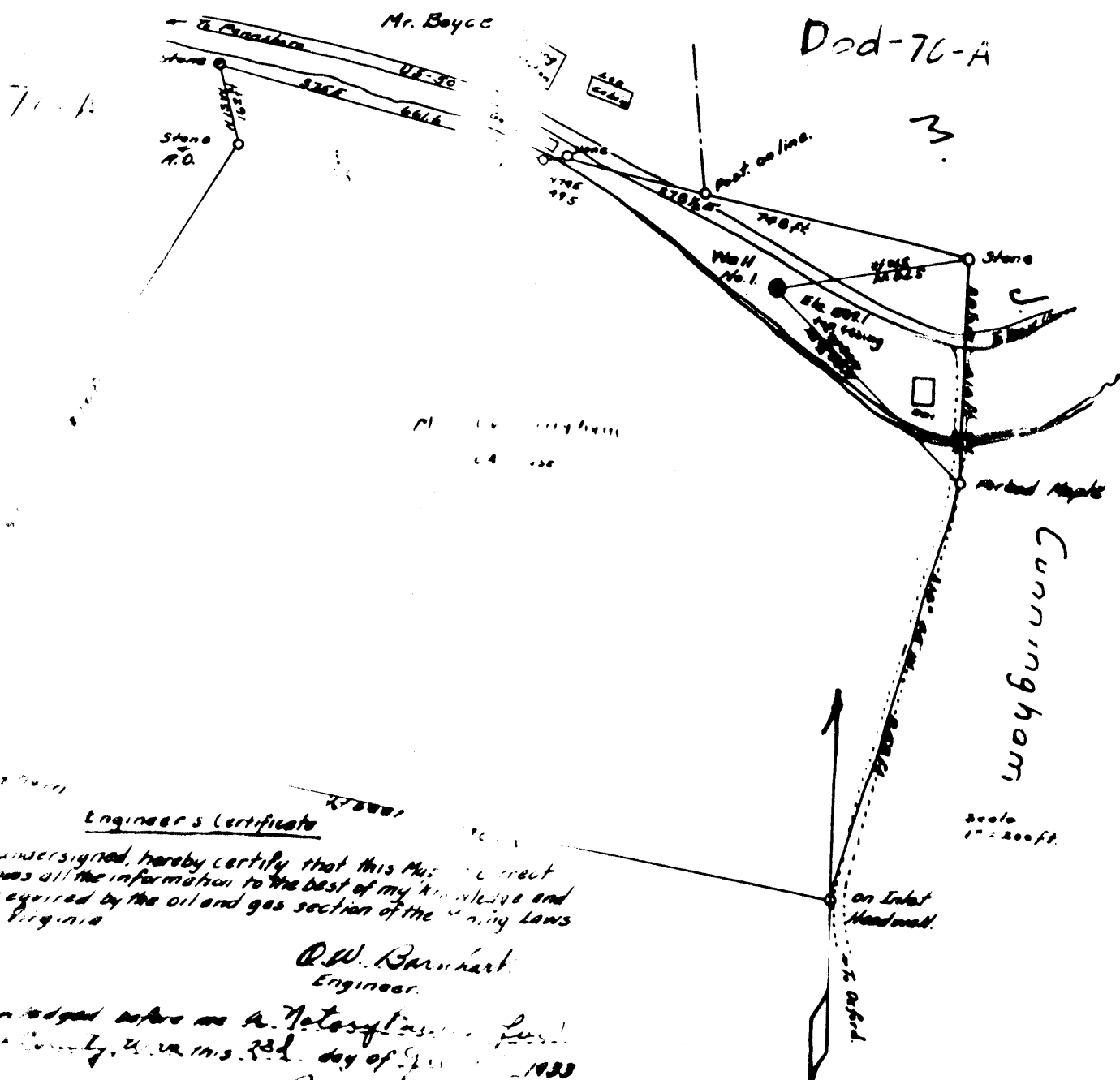
7.5' Quad West Union

District CENTRAL

WELL LOCATION PLAT

County 017 Permit 30070

Plat showing location of Well No. 1. of Rome Oil Co. of Sistersville, W. Va. on a 50 Acre tract, a part of a 250 acre tract belonging to M. J. Cunningham, Central District Doddridge County, West Virginia.



Engineer's Certificate

The undersigned, hereby certify that this Map is correct and shows all the information to the best of my knowledge and belief required by the oil and gas section of the Mining Laws West Virginia

D.W. Barnhart
Engineer.

Witnessed before me as a Notary Public for Doddridge County, W. Va. this 23rd day of September 1933

Beatrice Miller
Notary Public

Time	Depth	Pressure	Temperature	Flow	Remarks
11:00	1100	2100	110	1.0	1100-1150
11:05	1150	2150	115	1.0	1150-1200
11:10	1200	2200	120	1.0	1200-1250
11:15	1250	2250	125	1.0	1250-1300
11:20	1300	2300	130	1.0	1300-1350
11:25	1350	2350	135	1.0	1350-1400
11:30	1400	2400	140	1.0	1400-1450
11:35	1450	2450	145	1.0	1450-1500
11:40	1500	2500	150	1.0	1500-1550
11:45	1550	2550	155	1.0	1550-1600
11:50	1600	2600	160	1.0	1600-1650
11:55	1650	2650	165	1.0	1650-1700
12:00	1700	2700	170	1.0	1700-1750
12:05	1750	2750	175	1.0	1750-1800
12:10	1800	2800	180	1.0	1800-1850
12:15	1850	2850	185	1.0	1850-1900
12:20	1900	2900	190	1.0	1900-1950
12:25	1950	2950	195	1.0	1950-2000
12:30	2000	3000	200	1.0	2000-2050
12:35	2050	3050	205	1.0	2050-2100
12:40	2100	3100	210	1.0	2100-2150
12:45	2150	3150	215	1.0	2150-2200
12:50	2200	3200	220	1.0	2200-2250
12:55	2250	3250	225	1.0	2250-2300
13:00	2300	3300	230	1.0	2300-2350
13:05	2350	3350	235	1.0	2350-2400
13:10	2400	3400	240	1.0	2400-2450
13:15	2450	3450	245	1.0	2450-2500
13:20	2500	3500	250	1.0	2500-2550
13:25	2550	3550	255	1.0	2550-2600
13:30	2600	3600	260	1.0	2600-2650
13:35	2650	3650	265	1.0	2650-2700
13:40	2700	3700	270	1.0	2700-2750
13:45	2750	3750	275	1.0	2750-2800
13:50	2800	3800	280	1.0	2800-2850
13:55	2850	3850	285	1.0	2850-2900
14:00	2900	3900	290	1.0	2900-2950
14:05	2950	3950	295	1.0	2950-3000
14:10	3000	4000	300	1.0	3000-3050
14:15	3050	4050	305	1.0	3050-3100
14:20	3100	4100	310	1.0	3100-3150
14:25	3150	4150	315	1.0	3150-3200
14:30	3200	4200	320	1.0	3200-3250
14:35	3250	4250	325	1.0	3250-3300
14:40	3300	4300	330	1.0	3300-3350
14:45	3350	4350	335	1.0	3350-3400
14:50	3400	4400	340	1.0	3400-3450
14:55	3450	4450	345	1.0	3450-3500
15:00	3500	4500	350	1.0	3500-3550
15:05	3550	4550	355	1.0	3550-3600
15:10	3600	4600	360	1.0	3600-3650
15:15	3650	4650	365	1.0	3650-3700
15:20	3700	4700	370	1.0	3700-3750
15:25	3750	4750	375	1.0	3750-3800
15:30	3800	4800	380	1.0	3800-3850
15:35	3850	4850	385	1.0	3850-3900
15:40	3900	4900	390	1.0	3900-3950
15:45	3950	4950	395	1.0	3950-4000
15:50	4000	5000	400	1.0	4000-4050
15:55	4050	5050	405	1.0	4050-4100
16:00	4100	5100	410	1.0	4100-4150
16:05	4150	5150	415	1.0	4150-4200
16:10	4200	5200	420	1.0	4200-4250
16:15	4250	5250	425	1.0	4250-4300
16:20	4300	5300	430	1.0	4300-4350
16:25	4350	5350	435	1.0	4350-4400
16:30	4400	5400	440	1.0	4400-4450
16:35	4450	5450	445	1.0	4450-4500
16:40	4500	5500	450	1.0	4500-4550
16:45	4550	5550	455	1.0	4550-4600
16:50	4600	5600	460	1.0	4600-4650
16:55	4650	5650	465	1.0	4650-4700
17:00	4700	5700	470	1.0	4700-4750
17:05	4750	5750	475	1.0	4750-4800
17:10	4800	5800	480	1.0	4800-4850
17:15	4850	5850	485	1.0	4850-4900
17:20	4900	5900	490	1.0	4900-4950
17:25	4950	5950	495	1.0	4950-5000
17:30	5000	6000	500	1.0	5000-5050
17:35	5050	6050	505	1.0	5050-5100
17:40	5100	6100	510	1.0	5100-5150
17:45	5150	6150	515	1.0	5150-5200
17:50	5200	6200	520	1.0	5200-5250
17:55	5250	6250	525	1.0	5250-5300
18:00	5300	6300	530	1.0	5300-5350
18:05	5350	6350	535	1.0	5350-5400
18:10	5400	6400	540	1.0	5400-5450
18:15	5450	6450	545	1.0	5450-5500
18:20	5500	6500	550	1.0	5500-5550
18:25	5550	6550	555	1.0	5550-5600
18:30	5600	6600	560	1.0	5600-5650
18:35	5650	6650	565	1.0	5650-5700
18:40	5700	6700	570	1.0	5700-5750
18:45	5750	6750	575	1.0	5750-5800
18:50	5800	6800	580	1.0	5800-5850
18:55	5850	6850	585	1.0	5850-5900
19:00	5900	6900	590	1.0	5900-5950
19:05	5950	6950	595	1.0	5950-6000
19:10	6000	7000	600	1.0	6000-6050
19:15	6050	7050	605	1.0	6050-6100
19:20	6100	7100	610	1.0	6100-6150
19:25	6150	7150	615	1.0	6150-6200
19:30	6200	7200	620	1.0	6200-6250
19:35	6250	7250	625	1.0	6250-6300
19:40	6300	7300	630	1.0	6300-6350
19:45	6350	7350	635	1.0	6350-6400
19:50	6400	7400	640	1.0	6400-6450
19:55	6450	7450	645	1.0	6450-6500
20:00	6500	7500	650	1.0	6500-6550
20:05	6550	7550	655	1.0	6550-6600
20:10	6600	7600	660	1.0	6600-6650
20:15	6650	7650	665	1.0	6650-6700
20:20	6700	7700	670	1.0	6700-6750
20:25	6750	7750	675	1.0	6750-6800
20:30	6800	7800	680	1.0	6800-6850
20:35	6850	7850	685	1.0	6850-6900
20:40	6900	7900	690	1.0	6900-6950
20:45	6950	7950	695	1.0	6950-7000
20:50	7000	8000	700	1.0	7000-7050
20:55	7050	8050	705	1.0	7050-7100
21:00	7100	8100	710	1.0	7100-7150
21:05	7150	8150	715	1.0	7150-7200
21:10	7200	8200	720	1.0	7200-7250
21:15	7250	8250	725	1.0	7250-7300
21:20	7300	8300	730	1.0	7300-7350
21:25	7350	8350	735	1.0	7350-7400
21:30	7400	8400	740	1.0	7400-7450
21:35	7450	8450	745	1.0	7450-7500
21:40	7500	8500	750	1.0	7500-7550
21:45	7550	8550	755	1.0	7550-7600
21:50	7600	8600	760	1.0	7600-7650
21:55	7650	8650	765	1.0	7650-7700
22:00	7700	8700	770	1.0	7700-7750
22:05	7750	8750	775	1.0	7750-7800
22:10	7800	8800	780	1.0	7800-7850
22:15	7850	8850	785	1.0	7850-7900
22:20	7900	8900	790	1.0	7900-7950
22:25	7950	8950	795	1.0	7950-8000
22:30	8000	9000	800	1.0	8000-8050
22:35	8050	9050	805	1.0	8050-8100
22:40	8100	9100	810	1.0	8100-8150
22:45	8150	9150	815	1.0	8150-8200
22:50	8200	9200	820	1.0	8200-8250
22:55	8250	9250	825	1.0	8250-8300
23:00	8300	9300	830	1.0	8300-8350
23:05	8350	9350	835	1.0	8350-8400
23:10	8400	9400	840	1.0	8400-8450
23:15	8450	9450	845	1.0	8450-8500
23:20	8500	9500	850	1.0	8500-8550
23:25	8550	9550	855	1.0	8550-8600
23:30	8600	9600	860	1.0	8600-8650
23:35	8650	9650	865	1.0	8650-8700
23:40	8700	9700	870	1.0	8700-8750
23:45	8750	9750	875	1.0	8750-8800
23:50	8800	9800	880	1.0	8800-8850
23:55	8850	9850	885	1.0	8850-8900
24:00	8900	9900	890	1.0	8900-8950
24:05	8950	9950	895	1.0	8950-9000
24:10	9000	10000	900	1.0	9000-9050
24:15	9050	10050	905	1.0	9050-9100
24:20	9100	10100	910	1.0	9100-9150
24:25	9150	10150	915	1.0	9150-9200
24:30	9200	10200	920	1.0	9200-9250
24:35	9250	10250	925	1.0	9250-9300
24:40	9300	10300	930	1.0	9300-9350
24:45	9350	10350	935	1.0	9350-9400
24:50	9400	10400	940	1.0	9400-9450
24:55	9450	10450	945	1.0	9450-9500
25:00	9500	10500	950	1.0	9500-9550
25:05	9550	10550	955	1.0	9550-9600
25:10	9600	10600	960	1.0	9600-9650
25:15	9650	10650	9		

APPROVED BY THE DIRECTOR OF THE WEST VIRGINIA DEPARTMENT OF MINES
 AND GEOLOGY
 WEST VIRGINIA DEPARTMENT OF MINES
 AND GEOLOGY

8/1/41

Handwritten notes and signatures, including 'A. S. ...' and 'J. C. ...'



WEST VIRGINIA DEPARTMENT OF MINES
 ON and Coal Mines
 PRELIMINARY DATA SHEET NO. 1

Form with fields for mine name, location, and other details, including a signature at the bottom.