

Latitude 39° 27' 30"

80° 37' 30"

Longitude

7.5'  
+

Topo Location

7.5' Loc. 2.615 15' Loc. 5.495  
1.75W (calc.) 3.98W

Company \_\_\_\_\_

Farm Irvin Bates #1

15' Quad Center Point NC  
(sec.)

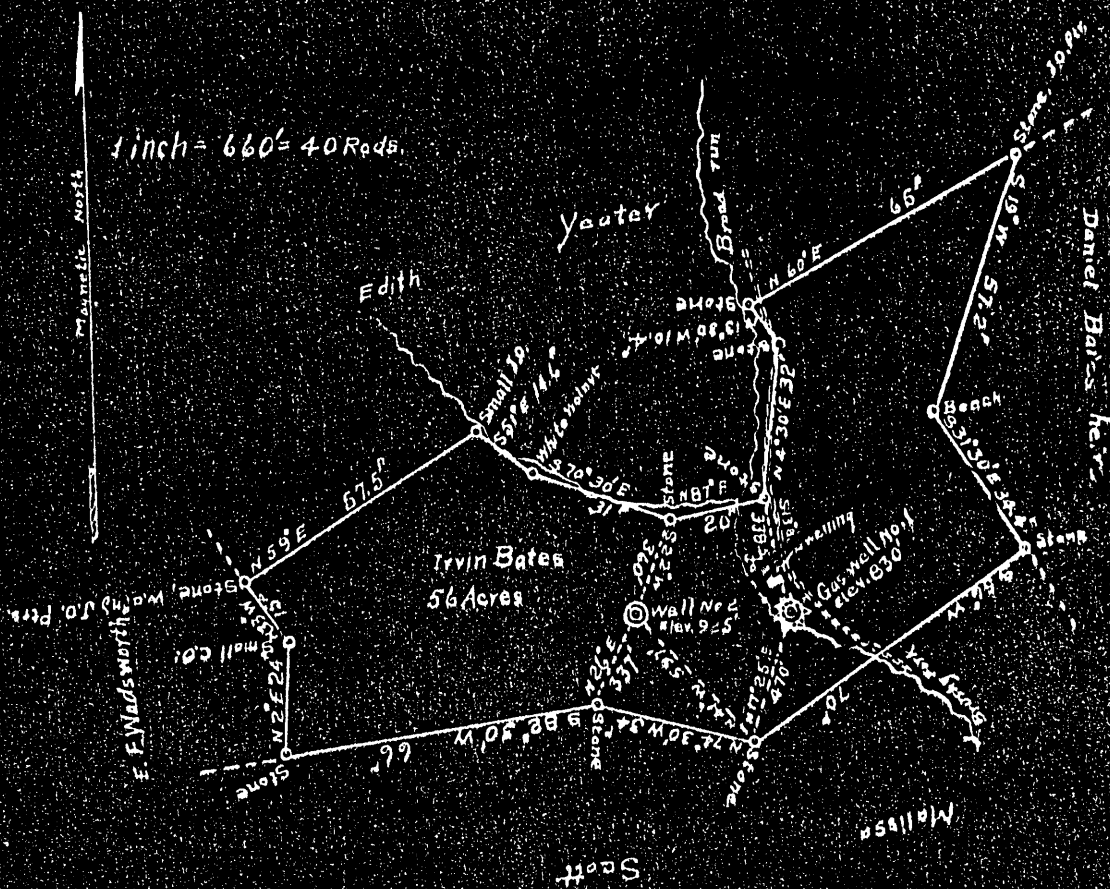
7.5' Quad Center Point

District McClellan

WELL LOCATION PLAT

County 017 Permit 30007

Plat of the Proposed Location of Well of G. H. Trainer, J. E. Trainer and Henry Ash of West Union, W. Va., on the Irvin Bates Farm, consisting of 56 Acres, Located in McClellan District, Doddridge County.



Engineers Certificate

I, the undersigned, hereby certify that this map is correct and shows all the information to the best of my knowledge and belief, required by the oil and gas section of the Mining Laws of West Virginia.

C. C. Freeman  
Civil Engineer.

Acknowledged before me, a Notary Public of Doddridge County, West Virginia, this 30<sup>th</sup> day of July, 1929.

*W. H. Summers*

My commission expires Oct. 21, 1929 Notary Public

7A

~~Doc 13~~

BATES, IRVIN, NO. 1.

Dod-7-A.

By Trainer Bros. & Ash.

McClellan Dist.

99  
207  
965 New 776





11		
11	804	807
1	850	851
1	856	857
1	882	883
1		880
1	870	871
1		878
30	1046	1076
27	1128	1161
40	1190	1220
140	1390	1424
53	1558	1571
14	1630	1644
10	1652	1662
3	1658	1665
62	1658	1927
199		2126
5		1935
7		1946
		1961
		2050
50	2112	2340
58	2400	2458
33	2512	2548
3	2648	2648
3	2648	2651
14	2651	2658
12	2658	2660
1	2677	2678
6	2714	2720
18	2810	2828
5	2964	2964
5	2964	2964
	2992	

including amt. in sands above.

Total Depth,  
 Began Drilling: Nov. 4, 1925.  
 Finished Well at 2027, Dec. 15, 1925.

Began Drilling again, Jan. 22, 1929.  
 Finished drilling, July 1, 1929.

10"	Casing,	315
8"	"	184
6-5/8"	"	1070
4-3/16"	"	2553

Well was ~~shot~~ shot at 1256-1261 feet; well was ~~shot~~ shot at 1935-1946 feet.

Salt  
 Fresh water at 975 feet; fresh water at 2050 feet.

producing  
 Well was ~~shot~~ shot. Light producer.

August 23, 1929.

Trainer Brothers & Ass.  
 Approved By G. L. [Signature], Manager of Mine

September 27th, 1915  
McClellan  
Coadridge  
Irvin Bates

AFFIDAVIT

STATE OF WEST VIRGINIA

County of Doddridge

J. S. Trainer

Irvin Bates

do hereby depose and swear according to law depose and swear that the following is a true and correct statement of the manner in which said well was plugged and filled.

Said well was plugged and filled and the work of plugging and filling said well was completed on the 25th day of September 1915.

5th day of September 1915

the following manner:

Manner in which well was plugged. Bridged at 2715 and filled with mud and clay to 2200 and wood plug driven with lead plug driven on top of wood plug. Bridged at 2000 and filled with mud and clay to 2030 and lead plug driven. Bridged from 2000 to 1910 with clay and mud and lead plug driven.

Manner in which coal was plugged. Bridged at 1165 and filled with mud and clay to 1145; filled with cement from 1145 to 1135 and filled with mud and clay to 620. Filled with cement from 620 to 400. Filled with mud and clay from 400 to 337. Filled with cement from 337 to 287, and filled with mud and clay from this point to the top of the hole.

Description of monument

17

and that the work of plugging and filling said well was completed on the 25th day of September 1915.

and further deposes and swears that

J. S. Trainer