

09/15/2023

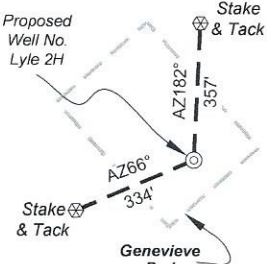
**Antero Resources
Well No. Lyle 2H**

Antero Resources Corporation

Page 1 of 3



Well Location References



9,032' to Top Hole

10,139' to Bottom Hole

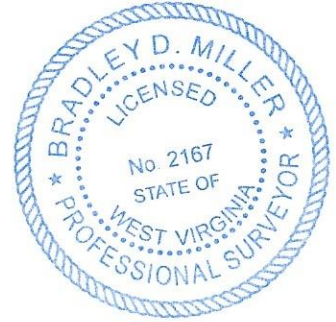
LATITUDE 39 - 20 - 00

LONGITUDE 80 - 45 - 00

11,786' to Bottom Hole

10,841' to Top Hole

Notes
West Virginia Coordinate System of 1927, North Zone based upon Differential GPS Measurements.
Well No. Lyle Unit 2H Top Hole coordinates are
N: 295,264.49' Latitude: 39°18'12.85"
E: 1,637,250.76' Longitude: 80°46'54.91"
Bottom Hole coordinates are
N: 294,335.63' Latitude: 39°18'03.51"
E: 1,636,131.41' Longitude: 80°47'08.98"
UTM Zone 17, NAD 1983
Top Hole Coordinates Bottom Hole Coordinates
N: 4,350,496.870m N: 4,350,208.193m
E: 518,818.025m E: 518,481.736m
Plat orientation and corner and well references are based upon the grid north meridian.
Well location references are based upon the magnetic meridian.



SEAL

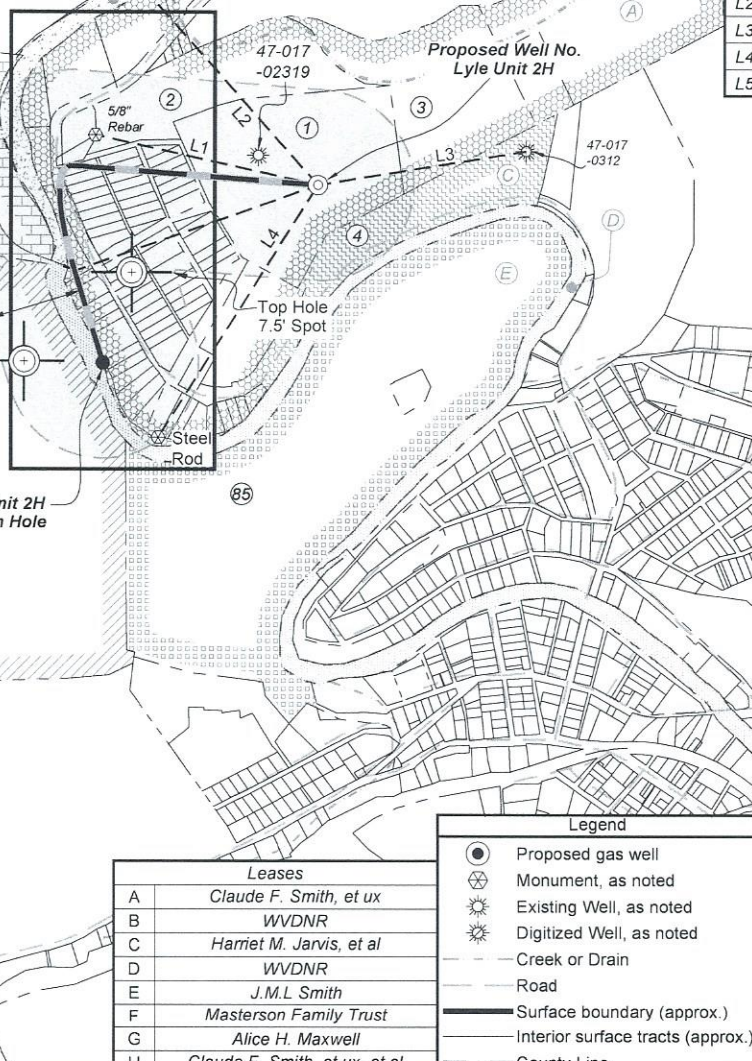
RECEIVED
Office of Oil and Gas
AUG 11 2023
WV Department of Environmental Protection

I, the undersigned, hereby certify that this plat is correct to the best of my knowledge and belief and shows all the information required by law and the rules issued and prescribed by the Department of Environmental Protection.

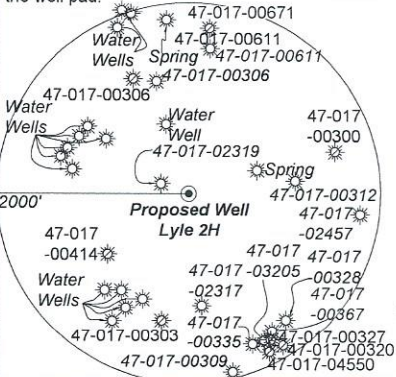
Bradley D. Miller
Bradley D. Miller, P.S. 2167

	Bearing	Dist.
L1	S 77°19' E	1,187.8'
L2	S 41°28' E	1,771.9'
L3	S 80°39' W	1,099.6'
L4	N 32°12' E	1,558.5'
L5	S 70°24' W	1,343.6'

See Detail Page 2

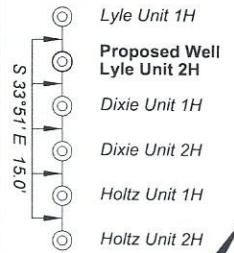


Note: 14 water wells and 2 springs were found within 2000' of proposed well. No occupied dwellings or buildings 2,500 square feet or larger used to house or shelter dairy cattle or poultry husbandry are located within 625' of the center of the well pad.



Notes:
Well No. Lyle Unit 2H
UTM Zone 17, NAD 1927
Top Hole Coordinates
N: 14,272,540.32'
E: 1,702,108.17'
Point of Entry Coordinates
N: 14,272,068.69'
E: 1,700,850.61'
Bottom Hole Coordinates
N: 14,271,593.26'
E: 1,701,004.86'

Wellhead Layout (NTS)



Leases

A	Claude F. Smith, et ux
B	WVDNR
C	Harriet M. Jarvis, et al
D	WVDNR
E	J.M.L. Smith
F	Masterson Family Trust
G	Alice H. Maxwell
H	Claude F. Smith, et ux, et al

Legend

- Proposed gas well
- ⊗ Monument, as noted
- ☀ Existing Well, as noted
- ☀ Digitized Well, as noted
- Creek or Drain
- Road
- Surface boundary (approx.)
- Interior surface tracts (approx.)
- County Line

FILE NO: 59-30-WU-14

DRAWING NO: Lyle Unit 2H Short Well Plat

SCALE: 1" = 1000'

MINIMUM DEGREE OF ACCURACY:
Submeter

PROVEN SOURCE OF ELEVATION:
WVDOT, Harrisville, WV

STATE OF WEST VIRGINIA
DEPARTMENT OF ENVIRONMENTAL PROTECTION
OIL AND GAS DIVISION

DATE: August 8 2023

OPERATOR'S WELL NO. Lyle Unit 2H

API WELL NO

47 - 017 - 06961

STATE COUNTY PERMIT

WELL TYPE: OIL GAS LIQUID INJECTION WASTE DISPOSAL
(IF GAS) PRODUCTION: STORAGE DEEP SHALLOW

LOCATION: ELEVATION: As-Built: 886' WATERSHED: Middle Island Creek QUADRANGLE: West Union

DISTRICT: West Union Antero COUNTY: Boone

SURFACE OWNER: Resources, Corp. ACREAGE: 16.5

ROYALTY OWNER: Claude F. Smith, et ux; LEASE NO: ACREAGE: 90;

PROPOSED WORK: DRILL CONVERT DRILL DEEPER FRACTURE OR STIMULATE PLUG OFF OLD FORMATION
 PERFORATE NEW FORMATION OTHER PHYSICAL CHANGE IN WELL (SPECIFY)

PLUG AND ABANDON CLEAN OUT AND REPLUG TARGET FORMATION: Marcellus Shale ESTIMATED DEPTH: 7,000' TVD 8,850' MD

WELL OPERATOR: Antero Resources Corporation

DESIGNATED AGENT: Kevin Ellis

ADDRESS: 1615 Wynkoop Street

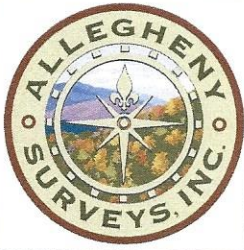
ADDRESS: 535 White Oaks Blvd.

Denver, CO 80202

Bridgeport, WV 26330

09/15/2023

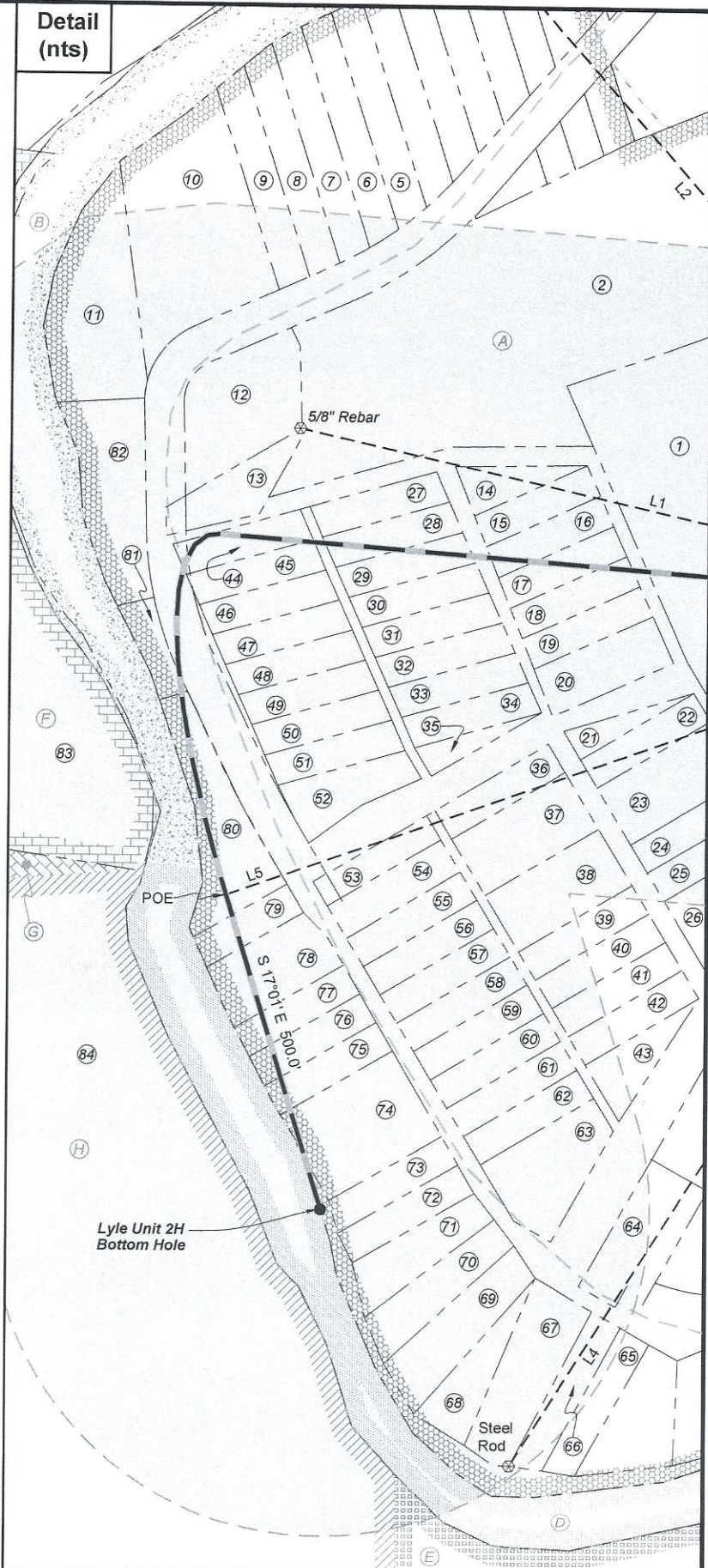
Antero Resources Corporation



RECEIVED
Office of Oil and Gas

AUG 11 2023

WV Department of
Environmental Protection



FILE NO: 59-30-WU-14
DRAWING NO: Lyle Unit 2H Short Well Plat
SCALE: 1" = 1000'
MINIMUM DEGREE OF ACCURACY:
Submeter
PROVEN SOURCE OF ELEVATION:
WVDOT, Harrisville, WV

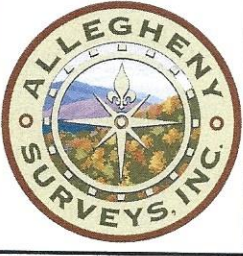
STATE OF WEST VIRGINIA
DEPARTMENT OF ENVIRONMENTAL PROTECTION
OIL AND GAS DIVISION

DATE: August 8 2023
OPERATOR'S WELL NO. Lyle Unit 2H
API WELL NO
47 - 017 - 06961
STATE COUNTY PERMIT

WELL TYPE: OIL GAS LIQUID INJECTION WASTE DISPOSAL
(IF GAS) PRODUCTION: STORAGE DEEP SHALLOW
LOCATION: ELEVATION: As-Built: 886' WATERSHED: Headwaters Middle Island Creek QUADRANGLE: West Union
DISTRICT: West Union Antero COUNTY: Doddridge
SURFACE OWNER: Resources, Corp. ACREAGE: 16.5
ROYALTY OWNER: Claude F. Smith, et ux; LEASE NO: ACREAGE: 90;
PROPOSED WORK: DRILL CONVERT DRILL DEEPER FRACTURE OR STIMULATE PLUG OFF OLD FORMATION
 PERFORATE NEW FORMATION OTHER PHYSICAL CHANGE IN WELL (SPECIFY)
 PLUG AND ABANDON CLEAN OUT AND REPLUG TARGET FORMATION: Marcellus Shale ESTIMATED DEPTH: 7,000' TVD 8,850' MD

WELL OPERATOR: Antero Resources Corporation DESIGNATED AGENT: Kevin Ellis
ADDRESS: 1615 Wynkoop Street ADDRESS: 535 White Oaks Blvd.
Denver, CO 80202 Bridgeport, WV 26330

Antero Resources Corporation



RECEIVED
Office of Oil and Gas

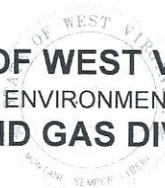
AUG 11 2023

WV Department of
Environmental Protection

ID	TM-Par	Owner	Bk/Pg	Acres
1	11-3	Antero Resources Corp.	431/528	16.50
2	11-2	Sharon K. & Paul D. Weekley	220/499	12.00
3	11-4	Sharon K. & Paul D. Weekley	186/743	17.30
4	11-4.1	Mary Lou Holland	286/313	9.55
5	35-34	Rebecca H. Nicholson	248/185	0.42
6	35-35	Rebecca H. Nicholson	248/185	0.41
7	35-36	Brandon Rogers	261/510	0.41
8	35-6	Brandon Rogers	261/510	0.40
9	35-37	Brandon Rogers	261/510	0.40
10	35-13	Brandon Rogers	261/510	1.10
11	35-18	Sharon K. & Paul D. Weekley	249/706	1.51
12	11-2.1	Charles P. & Patsy J. Heaster	493/343	1.20
13	11-2.2	Charles P. & Patsy J. Heaster	493/343	0.30
14	35-90	Antero Resource Corp.	430/666	0.24
15	35-91	Antero Resource Corp.	430/666	0.23
16	35-92	Antero Resource Corp.	430/666	0.23
17	35-3	Antero Resource Corp.	430/666	0.23
18	35-93	Antero Resource Corp.	430/666	0.23
19	35-94	Antero Resource Corp.	430/666	0.23
20	35-95	Antero Resource Corp.	430/666	0.36
21	35-4	Antero Resource Corp.	431/585	0.14
22	35-5	Antero Resource Corp.	431/585	0.23
23	35-96	Antero Resource Corp.	431/240	0.46
24	35-97	Antero Resource Corp.	431/240	0.23
25	35-98	Antero Resource Corp.	431/240	0.23
26	35-99	Antero Resource Corp.	431/240	0.44
27	35-72	Robert M. Cutright	170/729	0.23
28	35-73	Edward J. Cutright	170/723	0.23
29	35-74	Larry D. Patterson	240/110	0.23
30	35-75	Larry D. Patterson	240/110	0.23
31	35-7	Israel Williams Living Trust	W110/510	0.23
32	35-76	Israel Williams Living Trust	W110/510	0.23
33	35-77	Antero Resource Corp.	431/526	0.23
34	35-78	Antero Resource Corp.	431/526	0.23
35	35-8	UNKNOWN	-- -- --	0.11
36	35-9	Antero Resource Corp.	431/240	0.21
37	35-10	Antero Resource Corp.	431/240	0.41
38	35-11	Antero Resource Corp.	431/240	0.41
39	35-79	Antero Resource Corp.	431/240	0.21
40	35-80	Antero Resource Corp.	431/240	0.21
41	35-81	Antero Resource Corp.	431/240	0.21
42	35-82	Antero Resource Corp.	431/240	0.21
43	35-83	Antero Resource Corp.	431/240	0.15

ID	TM-Par	Owner	Bk/Pg	Acres
44	35-51	Danny G. Rowe	256/558	0.23
45	35-14	Danny G. Rowe	256/558	0.23
46	35-52	Danny G. Rowe	256/558	0.23
47	35-53	Antero Resource Corp.	431/240	0.23
48	35-54	Antero Resource Corp.	431/240	0.23
49	35-55	Antero Resource Corp.	431/240	0.23
50	35-56	Antero Resource Corp.	431/240	0.23
51	35-57	Antero Resource Corp.	431/240	0.23
52	35-58	Antero Resource Corp.	431/240	0.35
53	35-59	Antero Resource Corp.	431/240	0.23
54	35-60	Antero Resource Corp.	431/240	0.23
55	35-61	Antero Resource Corp.	431/240	0.23
56	35-62	Antero Resource Corp.	431/240	0.23
57	35-63	Antero Resource Corp.	431/240	0.23
58	35-15	Antero Resource Corp.	431/240	0.23
59	35-64	Antero Resource Corp.	431/240	0.23
60	35-65	Antero Resource Corp.	431/240	0.23
61	35-66	Antero Resource Corp.	431/240	0.23
62	35-67	Antero Resource Corp.	431/240	0.23
63	35-16	Janice M. Ellifritt	W19/452	0.52
64	35-17	David N. & Tine M. McCartney	288/60	0.46
65	35-27	Gregory A. & Denise L. Edgell	205/28	0.26
66	35-26	Gregory A. & Denise L. Edgell	176/207	0.28
67	35-45.1	Gregory A. & Denise L. Edgell	200/677	0.47
68	35-45	Ralph P. & Shelia R. McCutchan	205/263	0.17
69	35-25	Ralph P. & Shelia R. McCutchan	205/263	0.44
70	35-44	Ralph P. & Shelia R. McCutchan	205/263	0.30
71	35-24	Joshua A. & Kimberly D. Weekley	273/124	0.26
72	35-23	Joshua A. & Kimberly D. Weekley	273/124	0.24
73	35-22	Joshua A. & Kimberly D. Weekley	273/124	0.24
74	35-21	Joshua A. & Kimberly D. Weekley	273/124	0.69
75	35-43	Joshua A. & Kimberly D. Weekley	273/124	0.23
76	35-42	Michael L. & Joseph Smith	365/407	0.23
77	35-41	Michael L. & Joseph Smith	365/407	0.23
78	35-20	Michael L. & Joseph Smith	365/407	0.44
79	35-40	Michael L. & Joseph Smith	365/407	0.33
80	35-39	Michael L. & Joseph Smith	365/407	0.60
81	35-38	Michael L. & Joseph Smith	365/407	0.31
82	35-19	Sharon Ferrell & Charles D. Allen	469/579	0.81
83	11-1	Coastal Forest Resources Co.	260/135	233.44
84	11-13.2	Shirley McGill	522/68	199.30
85	11-13	Shirley McGill	522/68	58.55

FILE NO: 59-30-WU-14
DRAWING NO: Lyle Unit 2H Short Well Plat
SCALE: 1" = 1000'
MINIMUM DEGREE OF ACCURACY:
Submeter
PROVEN SOURCE OF ELEVATION:
WVDOT, Harrisville, WV


STATE OF WEST VIRGINIA
 DEPARTMENT OF ENVIRONMENTAL PROTECTION
OIL AND GAS DIVISION

DATE: August 8 2023
OPERATOR'S WELL NO. Lyle Unit 2H
API WELL NO
47 - 017 - 06961
STATE COUNTY PERMIT

WELL TYPE: OIL GAS LIQUID INJECTION WASTE DISPOSAL
(IF GAS) PRODUCTION: STORAGE DEEP SHALLOW

LOCATION: ELEVATION: As-Built: 886' WATERSHED: Headwaters Middle Island Creek QUADRANGLE: West Union
DISTRICT: West Union Antero COUNTY: Doddridge
SURFACE OWNER: Resources, Corp. ACREAGE: 16.5
ROYALTY OWNER: Claude F. Smith, et ux; LEASE NO: ACREAGE: 90;

PROPOSED WORK: DRILL CONVERT DRILL DEEPER FRACTURE OR STIMULATE PLUG OFF OLD FORMATION
 PERFORATE NEW FORMATION OTHER PHYSICAL CHANGE IN WELL (SPECIFY) _____ 7,000' TVD
 PLUG AND ABANDON CLEAN OUT AND REPLUG TARGET FORMATION: Marcellus Shale ESTIMATED DEPTH: 8,850' MD

WELL OPERATOR: Antero Resources Corporation DESIGNATED AGENT: Kevin Ellis
ADDRESS: 1615 Wynkoop Street ADDRESS: 535 White Oaks Blvd.
Denver, CO 80202 Bridgeport, WV 26330