

Antero Resources Corporation
 Appalachian Basin
 Genevieve Pad
 Doddridge County

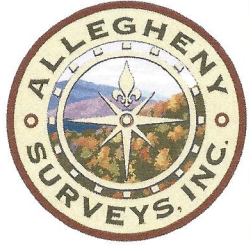
Quadrangle: West Union
 Watershed: Middle Island Creek
 District: West Union
 Date: 9-23-2022

09/15/2023

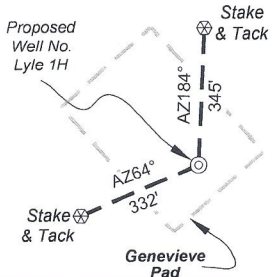
Antero Resources
Well No. Lyle 1H

Antero Resources Corporation

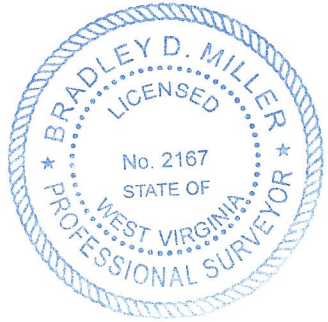
Page 1 of 2



Well Location References



Notes
West Virginia Coordinate System of 1927, North Zone based upon Differential GPS Measurements.
Well No. Lyle Unit 1H Top Hole coordinates are
N: 295,276.95' Latitude: 39°18'12.97"
E: 1,637,242.41' Longitude: 80°46'55.01"
Bottom Hole coordinates are
N: 294,101.46' Latitude: 39°18'01.08"
E: 1,635,272.05' Longitude: 80°47'19.86"
UTM Zone 17, NAD 1983
Top Hole Coordinates Bottom Hole Coordinates
N: 4,350,500.623m N: 4,350,132.479m
E: 518,815.417m E: 518,221.121m
Plat orientation and corner and well references are based upon the grid north meridian.
Well location references are based upon the magnetic meridian.

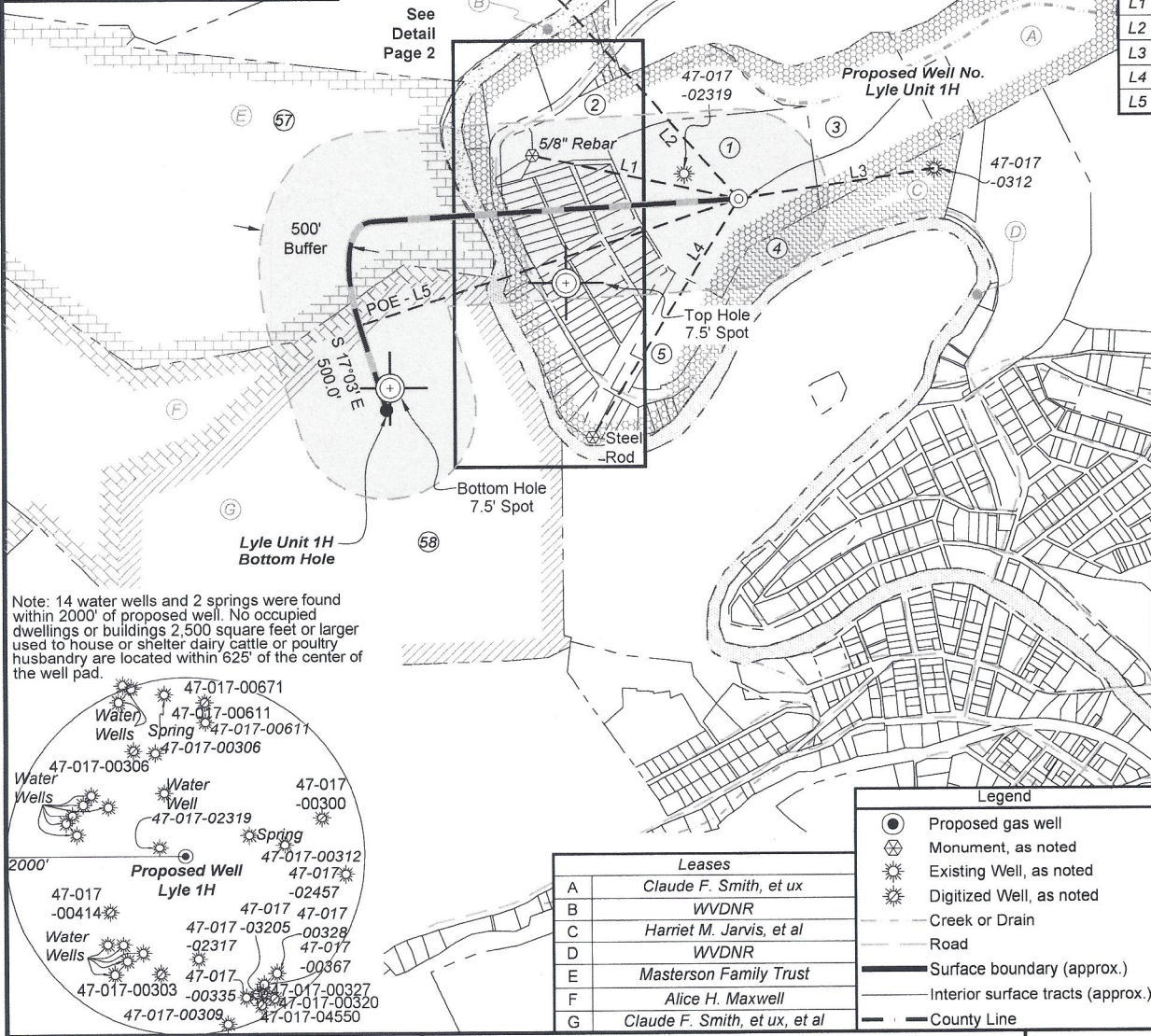


SEAL

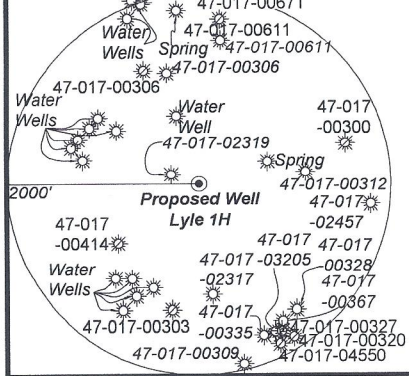
I, the undersigned, hereby certify that this plat is correct to the best of my knowledge and belief and shows all the information required by law and the rules issued and prescribed by the Department of Environmental Protection.

Bradley D. Miller
Bradley D. Miller, P.S. 2167

	Bearing	Dist.
L1	S 77°49' E	1,177.0'
L2	S 41°32' E	1,757.0'
L3	S 81°21' W	1,105.9'
L4	N 31°42' E	1,564.7'
L5	S 71°46' W	2,229.0'



Note: 14 water wells and 2 springs were found within 2000' of proposed well. No occupied dwellings or buildings 2,500 square feet or larger used to house or shelter dairy cattle or poultry husbandry are located within 625' of the center of the well pad.



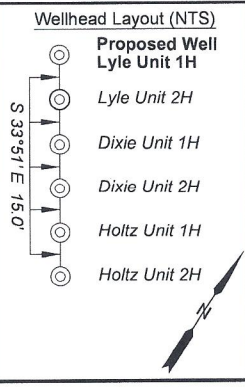
Leases

A	Claude F. Smith, et ux
B	WVDNR
C	Harriet M. Jarvis, et al
D	WVDNR
E	Masterson Family Trust
F	Alice H. Maxwell
G	Claude F. Smith, et ux, et al

Legend

- Proposed gas well
- Monument, as noted
- Existing Well, as noted
- Digitized Well, as noted
- Creek or Drain
- Road
- Surface boundary (approx.)
- Interior surface tracts (approx.)
- County Line

Notes:
Well No. Lyle Unit 1H
UTM Zone 17, NAD 1927
Top Hole Coordinates
N: 14,272,552.64'
E: 1,702,099.62'
Point of Entry Coordinates
N: 14,271,820.20'
E: 1,699,995.26'
Bottom Hole Coordinates
N: 14,271,344.87'
E: 1,700,149.82'



FILE NO: 59-30-WU-14
DRAWING NO: Lyle Unit 1H Short Well Plat
SCALE: 1" = 1000'
MINIMUM DEGREE OF ACCURACY: Submeter
PROVEN SOURCE OF ELEVATION: WVDOT, Harrisville, WV

STATE OF WEST VIRGINIA
DEPARTMENT OF ENVIRONMENTAL PROTECTION
OIL AND GAS DIVISION

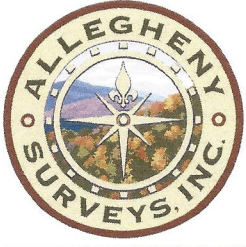
DATE: August 8 2023
OPERATOR'S WELL NO. Lyle Unit 1H
API WELL NO
47 - 017 - 06960
STATE COUNTY PERMIT

WELL TYPE: OIL GAS LIQUID INJECTION WASTE DISPOSAL
(IF GAS) PRODUCTION: STORAGE DEEP SHALLOW

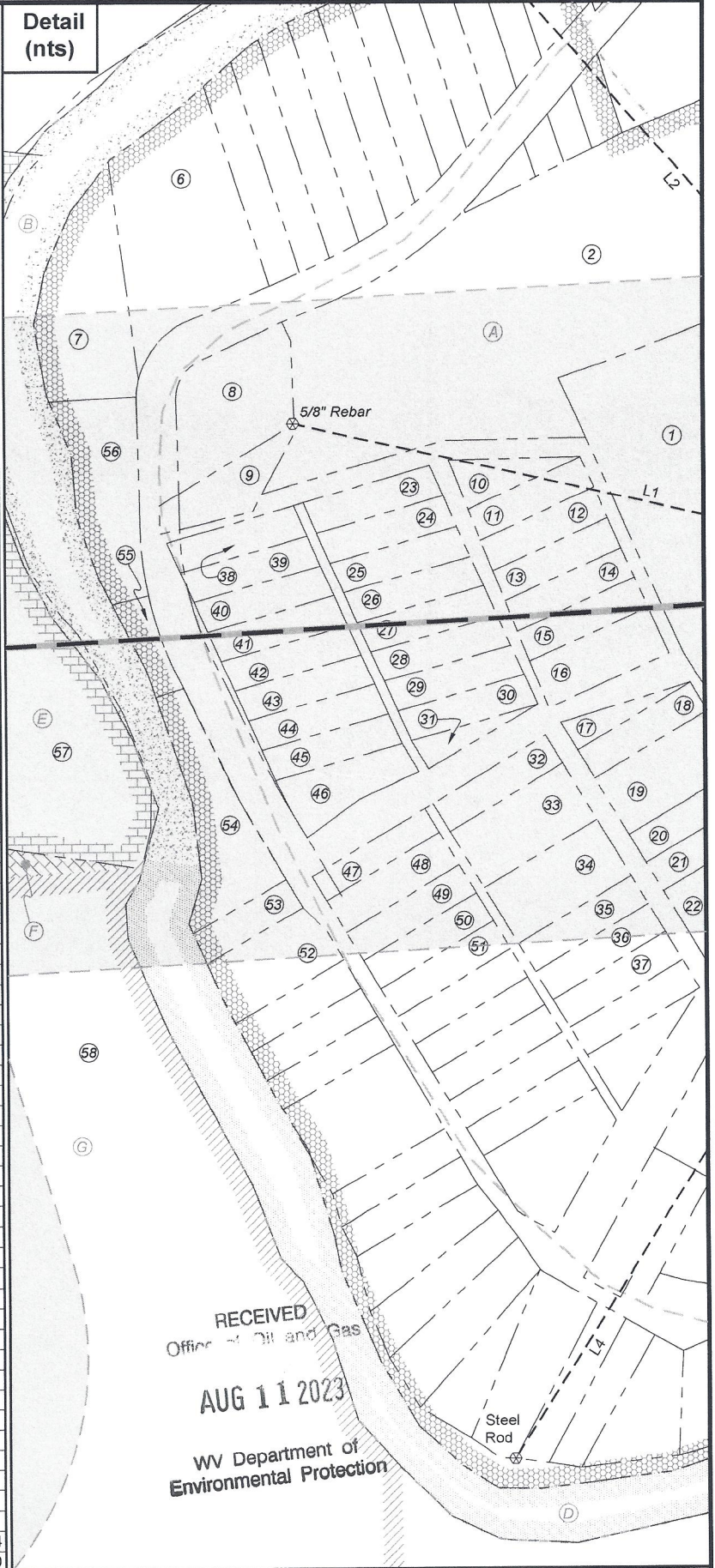
LOCATION: ELEVATION: As-Built: 886' WATERSHED: Middle Island Creek QUADRANGLE: West Union
DISTRICT: West Union Antero COUNTY: Boone
SURFACE OWNER: Resources, Corp. ACREAGE: 16.5
ROYALTY OWNER: Claude F. Smith, et ux; LEASE NO: ACREAGE: 90;
PROPOSED WORK: DRILL CONVERT DRILL DEEPER FRACTURE OR STIMULATE PLUG OFF OLD FORMATION
 PERFORATE NEW FORMATION OTHER PHYSICAL CHANGE IN WELL (SPECIFY) _____ 7,000' TVD
 PLUG AND ABANDON CLEAN OUT AND REPLUG TARGET FORMATION: Marcellus Shale ESTIMATED DEPTH: 9,750' MD

WELL OPERATOR: Antero Resources Corporation DESIGNATED AGENT: Kevin Ellis
ADDRESS: 1615 Wynkoop Street ADDRESS: 535 White Oaks Blvd.
Denver, CO 80202 Bridgeport, WV 26330

Antero Resources Corporation



ID	TM-Par	Owner	Bk/Pg	Acres
1	11-3	Antero Resources Corp.	431/528	16.50
2	11-2	Sharon K. & Paul D. Weekley	220/499	12.00
3	11-4	Sharon K. & Paul D. Weekley	186/743	17.30
4	11-4.1	Mary Lou Holland	286/313	9.55
5	35-100	David N. & Tina M. McCartney	288/60	4.50
6	35-13	Brandon Rogers	261/510	1.10
7	35-18	Sharon K. & Paul D. Weekley	249/706	1.51
8	11-2.1	Charles P. & Patsy J. Heaster	493/343	1.20
9	11-2.2	Charles P. & Patsy J. Heaster	493/343	0.30
10	35-90	Antero Resource Corp.	430/666	0.24
11	35-91	Antero Resource Corp.	430/666	0.23
12	35-92	Antero Resource Corp.	430/666	0.23
13	35-3	Antero Resource Corp.	430/666	0.23
14	35-93	Antero Resource Corp.	430/666	0.23
15	35-94	Antero Resource Corp.	430/666	0.23
16	35-95	Antero Resource Corp.	430/666	0.36
17	35-4	Antero Resource Corp.	431/585	0.14
18	35-5	Antero Resource Corp.	431/585	0.23
19	35-96	Antero Resource Corp.	431/240	0.46
20	35-97	Antero Resource Corp.	431/240	0.23
21	35-98	Antero Resource Corp.	431/240	0.23
22	35-99	Antero Resource Corp.	431/240	0.44
23	35-72	Robert M. Cutright	170/729	0.23
24	35-73	Edward J. Cutright	170/723	0.23
25	35-74	Larry D. Patterson	240/110	0.23
26	35-75	Larry D. Patterson	240/110	0.23
27	35-7	Israel Williams Living Trust	W110/510	0.23
28	35-76	Israel Williams Living Trust	W110/510	0.23
29	35-77	Antero Resource Corp.	431/526	0.23
30	35-78	Antero Resource Corp.	431/526	0.23
31	35-8	UNKNOWN	--/--	0.11
32	35-9	Antero Resource Corp.	431/240	0.21
33	35-10	Antero Resource Corp.	431/240	0.41
34	35-11	Antero Resource Corp.	431/240	0.41
35	35-79	Antero Resource Corp.	431/240	0.21
36	35-80	Antero Resource Corp.	431/240	0.21
37	35-81	Antero Resource Corp.	431/240	0.21
38	35-51	Danny G. Rowe	256/558	0.23
39	35-14	Danny G. Rowe	256/558	0.23
40	35-52	Danny G. Rowe	256/558	0.23
41	35-53	Antero Resource Corp.	431/240	0.23
42	35-54	Antero Resource Corp.	431/240	0.23
43	35-55	Antero Resource Corp.	431/240	0.23
44	35-56	Antero Resource Corp.	431/240	0.23
45	35-57	Antero Resource Corp.	431/240	0.23
46	35-58	Antero Resource Corp.	431/240	0.35
47	35-59	Antero Resource Corp.	431/240	0.23
48	35-60	Antero Resource Corp.	431/240	0.23
49	35-61	Antero Resource Corp.	431/240	0.23
50	35-62	Antero Resource Corp.	431/240	0.23
51	35-63	Antero Resource Corp.	431/240	0.23
52	35-20	Michael L. & Joseph Smith	365/407	0.44
53	35-40	Michael L. & Joseph Smith	365/407	0.33
54	35-39	Michael L. & Joseph Smith	365/407	0.60
55	35-38	Michael L. & Joseph Smith	365/407	0.31
56	35-19	Sharon Ferrell & Charles D. Allen	469/579	0.81
57	11-1	Coastal Forest Resources Co.	260/135	233.44
58	11-13.2	Shirley McGill	522/68	199.30



RECEIVED
Office of Oil and Gas
AUG 11 2023
WV Department of
Environmental Protection

FILE NO: 59-30-WU-14
DRAWING NO: Lyle Unit 1H Short Well Plat
SCALE: 1" = 1000'
MINIMUM DEGREE OF ACCURACY:
Submeter
PROVEN SOURCE OF ELEVATION:
WVDOT, Harrisville, WV

STATE OF WEST VIRGINIA
DEPARTMENT OF ENVIRONMENTAL PROTECTION
OIL AND GAS DIVISION

DATE: August 8 2023
OPERATOR'S WELL NO. Lyle Unit 1H
API WELL NO
47 - 017 - 06960
STATE COUNTY PERMIT

WELL TYPE: OIL GAS LIQUID INJECTION WASTE DISPOSAL
(IF GAS) PRODUCTION: STORAGE DEEP SHALLOW

LOCATION: ELEVATION: As-Built: 886' WATERSHED: Middle Island Creek QUADRANGLE: West Union
DISTRICT: West Union Antero COUNTY: Boone
SURFACE OWNER: Resources, Corp. ACREAGE: 16.5
ROYALTY OWNER: Claude F. Smith, et ux; LEASE NO: ACREAGE: 90;
PROPOSED WORK: DRILL CONVERT DRILL DEEPER FRACTURE OR STIMULATE PLUG OFF OLD FORMATION
 PERFORATE NEW FORMATION OTHER PHYSICAL CHANGE IN WELL (SPECIFY) _____ 7,000' TVD
 PLUG AND ABANDON CLEAN OUT AND REPLUG TARGET FORMATION: Marcellus Shale ESTIMATED DEPTH: 9,750' MD

WELL OPERATOR: Antero Resources Corporation DESIGNATED AGENT: Kevin Ellis
ADDRESS: 1615 Wynkoop Street ADDRESS: 535 White Oaks Blvd.
Denver, CO 80202 Bridgeport, WV 26330