

**Antero Resources Corporation**  
Appalachian Basin  
Genevieve Pad  
Doddridge County

Quadrangle: West Union  
Watershed: Middle Island Creek  
District: West Union  
Date: 9-23-2022

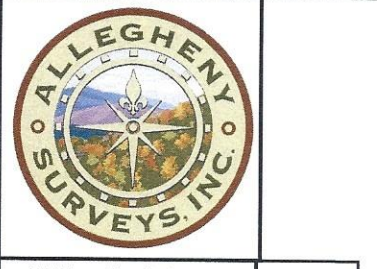
09/15/2023

**Antero Resources**  
Well No. **Dixie 1H**

Page 1 of 2

9,024' to Top Hole  
9,314' to Bottom Hole

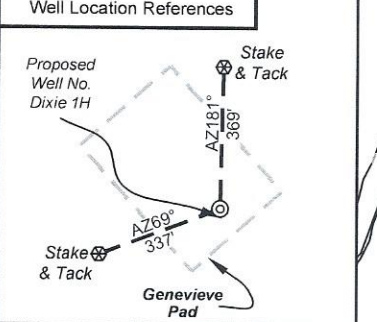
LATITUDE 39 - 20 - 00



RECEIVED  
Office of Oil and Gas  
**AUG 11 2023**  
WV Department of  
Environmental Protection

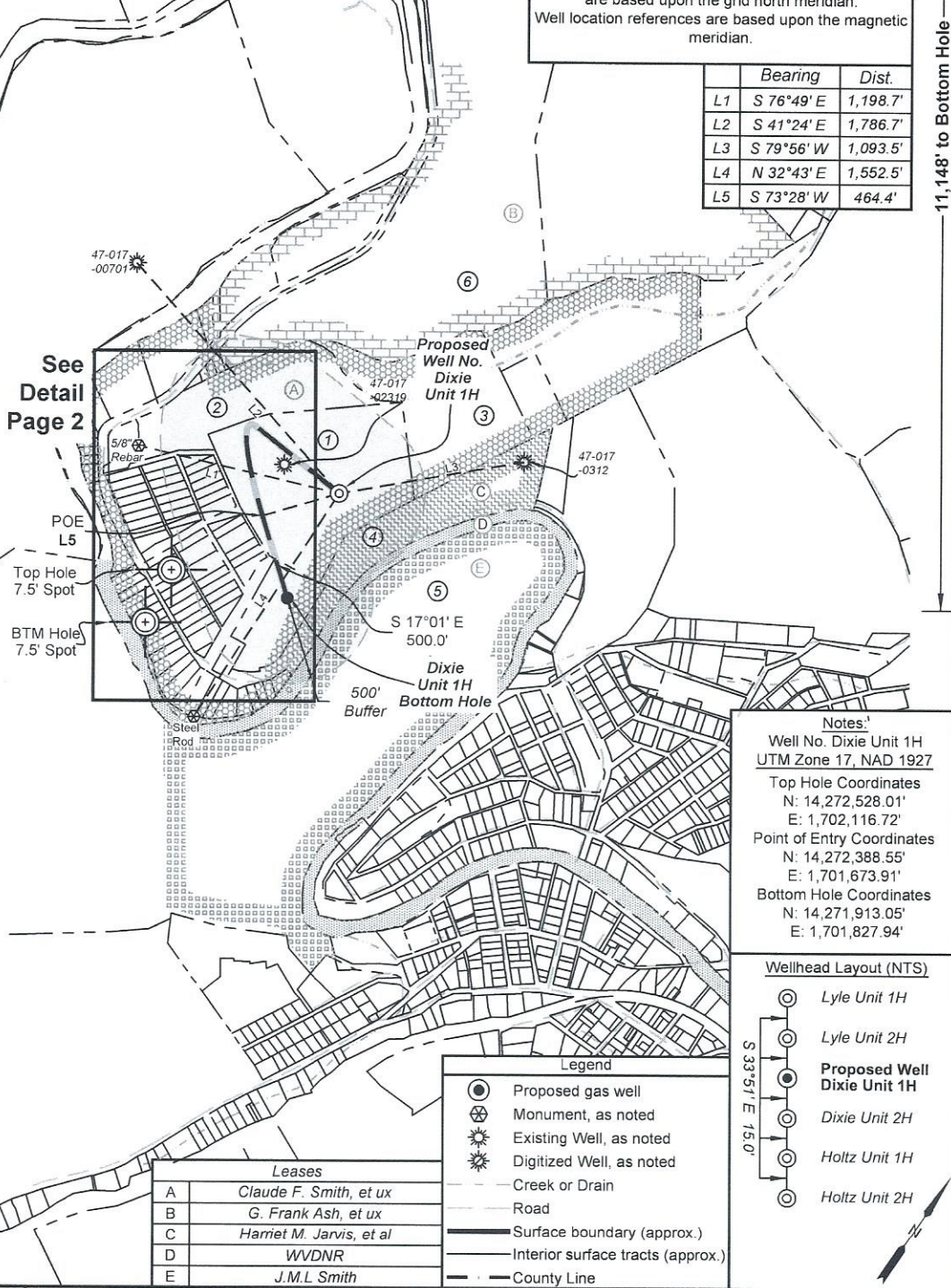
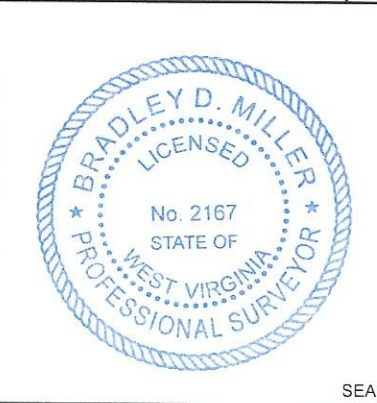
Notes  
West Virginia Coordinate System  
of 1927, North Zone  
based upon Differential GPS Measurements.  
Well No. Dixie Unit 1H Top Hole coordinates are  
N: 295,252.03' Latitude: 39°18'12.73"  
E: 1,637,259.11' Longitude: 80°46'54.80"  
Bottom Hole coordinates are  
N: 294,641.76' Latitude: 39°18'06.66"  
E: 1,636,960.01' Longitude: 80°46'58.49"  
UTM Zone 17, NAD 1983  
Top Hole Coordinates Bottom Hole Coordinates  
N: 4,350,493.116m N: 4,350,305.674m  
E: 518,820.632m E: 518,732.612m  
Plat orientation and corner and well references  
are based upon the grid north meridian.  
Well location references are based upon the magnetic  
meridian.

LONGITUDE 80 - 45 - 00  
11,148' to Bottom Hole  
10,853' to Top Hole



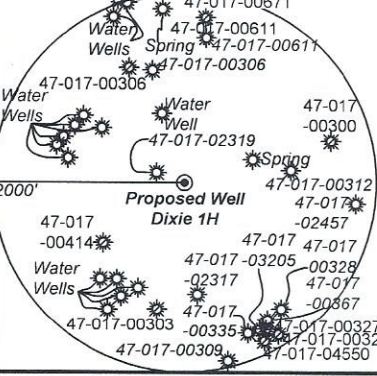
I, the undersigned, hereby certify that this plat is correct to the best of my knowledge and belief and shows all the information required by law and the rules issued and prescribed by the Department of Environmental Protection.

*Bradley D. Miller*  
Bradley D. Miller, P.S. 2167



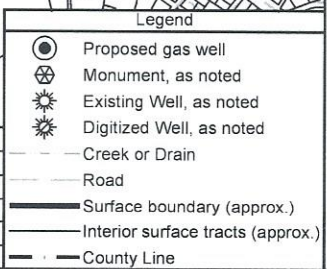
	Bearing	Dist.
L1	S 76°49' E	1,198.7'
L2	S 41°24' E	1,786.7'
L3	S 79°56' W	1,093.5'
L4	N 32°43' E	1,552.5'
L5	S 73°28' W	464.4'

Note: 14 water wells and 2 springs were found within 2000' of proposed well. No occupied dwellings or buildings 2,500 square feet or larger used to house or shelter dairy cattle or poultry husbandry are located within 625' of the center of the well pad.

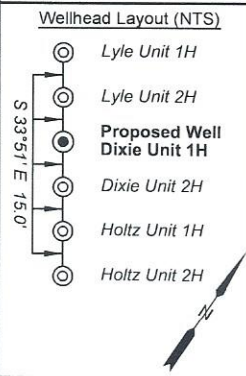


Leases

A	Claude F. Smith, et ux
B	G. Frank Ash, et ux
C	Harriet M. Jarvis, et al
D	WVDNR
E	J.M.L. Smith



Notes:  
Well No. Dixie Unit 1H  
UTM Zone 17, NAD 1927  
Top Hole Coordinates  
N: 14,272,528.01'  
E: 1,702,116.72'  
Point of Entry Coordinates  
N: 14,272,388.55'  
E: 1,701,673.91'  
Bottom Hole Coordinates  
N: 14,271,913.05'  
E: 1,701,827.94'



FILE NO: 58-30-WU-14  
DRAWING NO: Dixie Unit 1H Short Well Plat  
SCALE: 1" = 1000'  
MINIMUM DEGREE OF ACCURACY:  
Submeter  
PROVEN SOURCE OF ELEVATION:  
WVDOT, Harrisville, WV

**STATE OF WEST VIRGINIA**  
DEPARTMENT OF ENVIRONMENTAL PROTECTION  
**OIL AND GAS DIVISION**

DATE: August 2 2023  
OPERATOR'S WELL NO. Dixie Unit 1H  
API WELL NO  
47 - 017 - 06958  
STATE COUNTY PERMIT

WELL TYPE:  OIL  GAS  LIQUID INJECTION  WASTE DISPOSAL  
(IF GAS) PRODUCTION:  STORAGE  DEEP  SHALLOW

LOCATION: ELEVATION: As-Built: 886' WATERSHED: Middle Island Creek QUADRANGLE: West Union  
DISTRICT: West Union Antero COUNTY: Doddridge  
SURFACE OWNER: Resources, Corp. ACREAGE: 16.5  
ROYALTY OWNER: Claude F. Smith, et ux; LEASE NO: ACREAGE: 90;  
PROPOSED WORK:  DRILL  CONVERT  DRILL DEEPER  FRACTURE OR STIMULATE  PLUG OFF OLD FORMATION  
 PERFORATE NEW FORMATION  OTHER PHYSICAL CHANGE IN WELL (SPECIFY)  
 PLUG AND ABANDON  CLEAN OUT AND REPLUG TARGET FORMATION: Marcellus Shale ESTIMATED DEPTH: 7,500' MD

WELL OPERATOR: Antero Resources Corporation DESIGNATED AGENT: Kevin Ellis  
ADDRESS: 1615 Wynkoop Street ADDRESS: 535 White Oaks Blvd.  
Denver, CO 80202 Bridgeport, WV 26330

Antero Resources Corporation

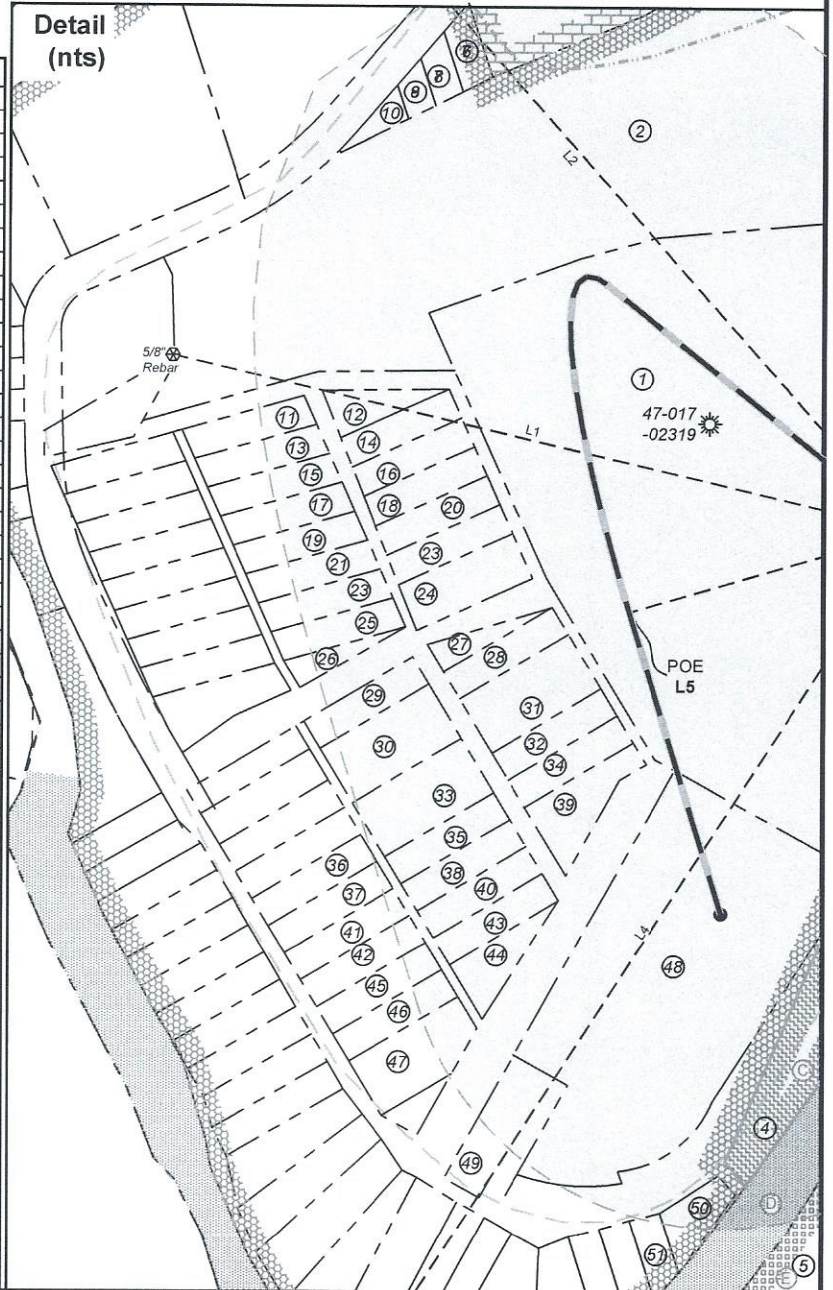


RECEIVED  
Office of Oil and Gas

AUG 11 2023

WV Department of  
Environmental Protection

ID	TM-Par	Owner	Bk/Pg	Acres
1	11-3	Antero Resources Corp.	431/528	16.50
2	11-2	Sharon K. & Paul D. Weekley	220/499	12.00
3	11-4	Paul D. & Sharon K. Weekley	186/743	17.30
4	11-4.1	Mary Lou Holland	286/313	9.55
5	11-13	Frank E. McGill	429/448	58.55
6	7-26	Barbara Jean Travis & Sharon K. Weekley	WB62/674	61.46
7	35-29	Sharon K. Weekely & Barbara J. Travis	WB62/674	0.34
8	35-1	Sharon K. Weekely & Barbara J. Travis	WB62/674	0.34
9	35-8	Sharon K. Weekely & Barbara J. Travis	WB62/674	0.34
10	11-2	Sharon K. & Paul D. Weekley	220/499	0.11
11	35-72	Robert M. Cutright	170/723	0.23
12	35-90	Antero Resources Corp.	430/666	0.23
13	35-73	Robert M. Cutright	170/723	0.23
14	35-91	Antero Resources Corp.	430/666	0.23
15	35-74	Larry D. Patterson	240/110	0.23
16	35-92	Antero Resources Corp.	430/666	0.23
17	35-75	Larry D. Patterson	240/110	0.23
18	35-3	Antero Resources Corp.	430/666	0.23
19	35-7	James I. Williams	170/720	0.23
20	35-93	Antero Resources Corp.	430/666	0.23
21	35-94	James I. Williams	170/720	0.23
22	35-95	Antero Resources Corp.	430/666	0.23
23	35-77	Antero Resources Corp.	431/526	0.23
24	35-95	Antero Resources Corp.	430/666	0.23
25	35-78	Antero Resources Corp.	431/526	0.23
26	35-8	Unknown	---/---	---
27	35-4	Antero Resources Corp.	431/585	0.14
28	35-5	Antero Resources Corp.	431/585	0.23
29	35-9	Antero Resources Corp.	431/240	0.21
30	35-10	Antero Resources Corp.	431/240	0.41
31	35-96	Antero Resources Corp.	431/240	0.46
32	35-97	Antero Resources Corp.	431/240	0.23
33	35-11	Antero Resources Corp.	431/240	0.41
34	35-98	Antero Resources Corp.	431/240	0.23
35	35-63	Antero Resources Corp.	431/240	0.21
36	35-15	Antero Resources Corp.	431/240	0.23
37	35-15	Antero Resources Corp.	431/240	0.23
38	35-80	Antero Resources Corp.	431/240	0.21
39	35-99	Antero Resources Corp.	431/240	0.44
40	35-81	Antero Resources Corp.	431/240	0.21
41	35-64	Antero Resources Corp.	431/240	0.23
42	35-65	Antero Resources Corp.	431/240	0.23
43	35-82	Antero Resources Corp.	431/240	0.21
44	35-83	Antero Resources Corp.	431/240	0.15
45	35-66	Antero Resources Corp.	431/240	0.23
46	35-67	Antero Resources Corp.	431/240	0.23
47	35-16	Janice M. Ellifritt	WB19/452	0.52
48	35-100	David N. & Tina M. McCartney	288/60	4.50
49	35-17	David & Tina McCartney	288/60	0.46
50	35-50	David Earl Post	360/339	0.27
51	35-49	David Earl Post	360/339	0.02



FILE NO: 58-30-WU-14  
DRAWING NO: Dixie Unit 1H Short Well Plat  
SCALE: 1" = 1000'  
MINIMUM DEGREE OF ACCURACY: Submeter  
PROVEN SOURCE OF ELEVATION: WVDOT, Harrisville, WV

**STATE OF WEST VIRGINIA**  
DEPARTMENT OF ENVIRONMENTAL PROTECTION  
**OIL AND GAS DIVISION**

DATE: August 2 2023  
OPERATOR'S WELL NO. Dixie Unit 1H  
API WELL NO  
47 - 017 - 06958  
STATE COUNTY PERMIT

WELL TYPE:  OIL  GAS  LIQUID INJECTION  WASTE DISPOSAL  
(IF GAS) PRODUCTION:  STORAGE  DEEP  SHALLOW  
LOCATION: ELEVATION: As-Built: 886' WATERSHED: <sup>Headwaters</sup> Middle Island Creek QUADRANGLE: West Union  
DISTRICT: West Union Antero COUNTY: Dodder  
SURFACE OWNER: Resources, Corp. ACREAGE: 16.5  
ROYALTY OWNER: Claude F. Smith, et ux; LEASE NO: \_\_\_\_\_ ACREAGE: 90;  
PROPOSED WORK:  DRILL  CONVERT  DRILL DEEPER  FRACTURE OR STIMULATE  PLUG OFF OLD FORMATION  
 PERFORATE NEW FORMATION  OTHER PHYSICAL CHANGE IN WELL (SPECIFY) \_\_\_\_\_  
 PLUG AND ABANDON  CLEAN OUT AND REPLUG TARGET FORMATION: Marcellus Shale ESTIMATED DEPTH: 7,500' MD

WELL OPERATOR: Antero Resources Corporation DESIGNATED AGENT: Kevin Ellis  
ADDRESS: 1615 Wynkoop Street ADDRESS: 535 White Oaks Blvd.  
Denver, CO 80202 Bridgeport, WV 26330