



ANTERO RESOURCES CORPORATION

Location: Doddridge Co., WV
 Field: Doddridge
 Facility: OXF 98 Pad

Slot: Slot D
 Well: Aspen Unit 2H
 Wellbore: Aspen Unit 2H PWB

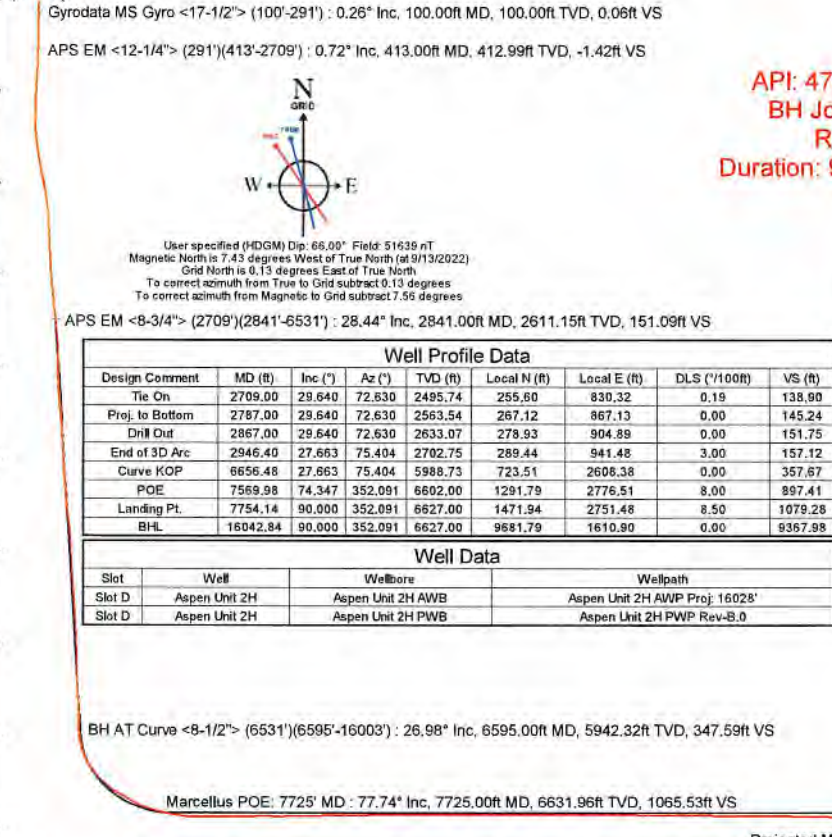


Pit reference wellpath is Aspen Unit 2H PWP Rev-B.0	Grid System: NAD27 / UTM Zone 17 North, US feet
True vertical depths are referenced to H&P 317 (RKB)	North Reference: Grid north
Reference wellpath measured depths are referenced to H&P 317 (RKB)	Scale: True distance
H&P 317 (RKB) to Mean Sea Level: 1146.5 feet	Coordinates are in feet referenced to SMI
Mean Sea Level to Ground level (At Slot: Slot D): -1121 feet	Depths are in feet
Other wellpath MDs are referenced to each path's default MD datum	Created by: vckaryar on 2022-10-01, Database: WA_MPL_EASTERNUS_Defn

Location Information						
Facility Name	Grid East (US ft)	Grid North (US ft)	Latitude	Longitude		
OXFD 98 Pad	1697152.739	14254203.830	39°15'11.6600"N	80°47'58.4860"W		
Slot	Local N (ft)	Local E (ft)	Grid East (US ft)	Grid North (US ft)	Latitude	Longitude
Slot D	-14.26	-4.61	1697148.120	14254189.550	39°15'11.5190"N	80°47'58.5451"W
Comment: Aspen Unit 2H						
H&P 317 (RKB) to Ground level (At Slot: Slot D)					25.5ft	
Mean Sea Level to Ground level (At Slot: Slot D)					-1121ft	
H&P 317 (RKB) to Mean Sea Level					1146.5ft	

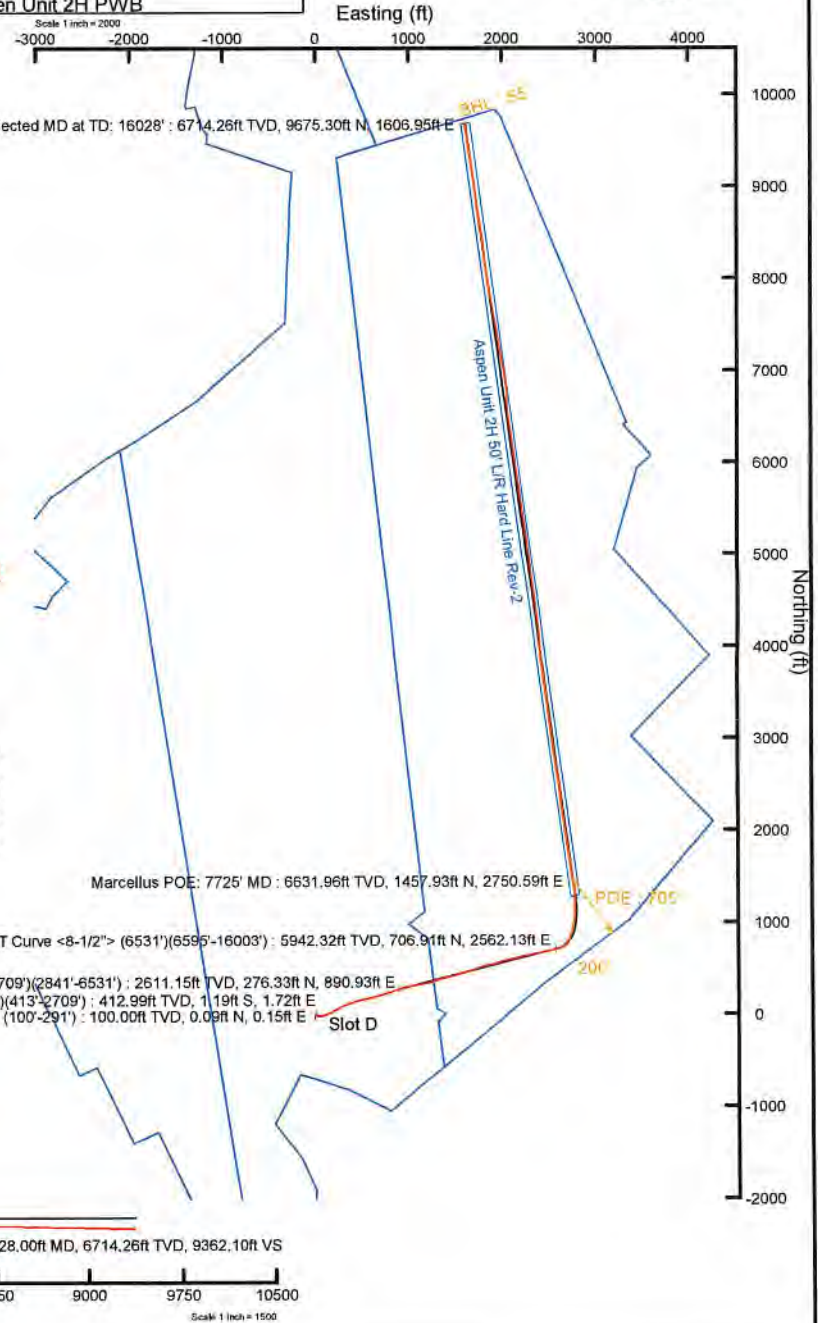
Scale: 1 inch = 1000'

True Vertical Depth (ft)



API: 47-017-06927-0000
 BH Job #: 111456653
 Rig: H&P 317
 Duration: 9/15/2022-9/18/2022

RECEIVED
 Office of Oil and Gas
 APR 24 2023
 WV Department of
 Environmental Protection



Vertical Section (ft)
 Azimuth 352.09° with reference 0.00 N, 0.00 E



Actual Wellpath Report

Aspen Unit 2H AWP Proj: 16028'
Page 1 of 10



REFERENCE WELLPATH IDENTIFICATION			
Operator	ANTERO RESOURCES CORPORATION	Well	Aspen Unit 2H
Field	Doddridge	API	47-017-06927-0000
Facility	OXFD 98 Pad	Wellbore	Aspen Unit 2H AWB
Slot	Slot D		

REPORT SETUP INFORMATION			
Projection System	NAD27 / UTM Zone 17 North, US feet	Software System	WellArchitect® 6.0
North Reference	Grid	User	Edsaryar
Scale	0.999604	Report Generated	10/1/2022 at 10:22:18 PM
Convergence at slot	0.13° East	Database	WA_MPL_EASTERNUS_Defn

WELLPATH LOCATION						
	Local coordinates		Grid coordinates		Geographic coordinates	
	North[ft]	East[ft]	Easting[US ft]	Northing[US ft]	Latitude	Longitude
Slot Location	-14.28	-4.61	1697148.12	14254189.56	39°15'11.5190"N	80°47'58.5451"W
Facility Reference Pt			1697152.73	14254203.83	39°15'11.6600"N	80°47'58.4860"W
Field Reference Pt			0.00	0.00	0°00'0.0000"	85°29'19.3013"W

WELLPATH DATUM			
Calculation method	Minimum curvature	H&P 317 (RKB) to Facility Vertical Datum	1146.50ft
Horizontal Reference Pt	Slot	H&P 317 (RKB) to Mean Sea Level	1146.50ft
Vertical Reference Pt	H&P 317 (RKB)	H&P 317 (RKB) to Ground Level at Slot (Slot D)	25.50ft
MD Reference Pt	H&P 317 (RKB)	Section Origin	N 0.00, E 0.00 ft
Field Vertical Reference	Mean Sea Level	Section Azimuth	352.09°

RECEIVED
 Office of Oil and Gas
 APR 24 2023
 WV Department of Environmental Protection



Actual Wellpath Report

Aspen Unit 2H AWP Proj: 16028'

Page 2 of 10



REFERENCE WELLPATH IDENTIFICATION			
Operator	ANTERO RESOURCES CORPORATION	Well	Aspen Unit 2H
Field	Doddridge	API	47-017-06927-0000
Facility	OXFD 98 Pad	Wellbore	Aspen Unit 2H AWB
Slot	Slot D		

WELLPATH DATA (174 stations) † = interpolated, ‡ = extrapolated station

MD [ft]	Inclination [°]	Azimuth [°]	TVD [ft]	Vert Sect [ft]	North [ft]	East [ft]	Grid East [US ft]	Grid North [US ft]	Latitude	Longitude	Closure Dist [ft]	Closure Dir [°]	DLS ["/100ft]	Build Rate ["/100ft]	Turn Rate ["/100ft]
0.00†	0.000	59.680	0.00	0.00	0.00	0.00	1697148.12	14254189.56	39°15'11.5190"N	80°47'58.5451"W	0.00	0.000	0.00	0.00	0.00
25.50	0.000	59.680	25.50	0.00	0.00	0.00	1697148.12	14254189.56	39°15'11.5190"N	80°47'58.5451"W	0.00	0.000	0.00	0.00	0.00
100.00	0.260	59.680	100.00	0.06	0.09	0.15	1697148.27	14254189.65	39°15'11.5199"N	80°47'58.5432"W	0.17	59.680	0.35	0.35	0.00
200.00	0.290	122.210	200.00	-0.01	0.06	0.56	1697148.68	14254189.62	39°15'11.5197"N	80°47'58.5380"W	0.56	83.333	0.29	0.03	62.53
291.00	0.420	124.290	291.00	-0.38	-0.25	1.03	1697149.15	14254189.31	39°15'11.5166"N	80°47'58.5320"W	1.06	103.462	0.14	0.14	2.29
413.00	0.720	155.260	412.99	-1.42	-1.19	1.72	1697149.84	14254188.37	39°15'11.5072"N	80°47'58.5233"W	2.09	124.817	0.34	0.25	25.39
505.00	2.310	135.650	504.96	-3.46	-3.04	3.25	1697151.37	14254186.52	39°15'11.4889"N	80°47'58.5038"W	4.46	133.091	1.79	1.73	-21.32
595.00	4.270	123.940	594.80	-7.16	-6.21	7.30	1697155.42	14254183.35	39°15'11.4575"N	80°47'58.4524"W	9.59	130.389	2.29	2.18	-13.01
686.00	6.530	111.320	685.40	-11.95	-9.99	14.93	1697163.05	14254179.58	39°15'11.4200"N	80°47'58.3555"W	17.97	123.769	2.79	2.48	-13.87
775.00	9.010	100.000	773.58	-16.56	-13.04	26.51	1697174.62	14254176.53	39°15'11.3896"N	80°47'58.2084"W	29.55	116.183	3.26	2.79	-12.72
866.00	11.280	91.240	863.16	-20.17	-14.47	42.43	1697190.54	14254175.10	39°15'11.3751"N	80°47'58.0061"W	44.83	108.826	3.01	2.49	-9.63
957.00	13.770	81.160	951.99	-21.41	-12.99	62.04	1697210.13	14254176.57	39°15'11.3892"N	80°47'57.7568"W	63.38	101.831	3.63	2.74	-11.08
1047.00	16.830	73.800	1038.80	-19.36	-7.71	85.14	1697233.23	14254181.85	39°15'11.4409"N	80°47'57.4630"W	85.49	95.176	4.02	3.40	-8.18
1142.00	21.130	66.670	1128.63	-12.82	2.91	114.09	1697262.16	14254192.47	39°15'11.5453"N	80°47'57.0947"W	114.13	88.538	5.13	4.53	-7.51
1236.00	23.710	63.530	1215.52	-2.29	18.05	146.57	1697294.63	14254207.60	39°15'11.6942"N	80°47'56.6814"W	147.68	82.980	3.03	2.74	-3.34
1331.00	25.490	62.200	1301.89	10.74	36.10	181.75	1697329.80	14254225.64	39°15'11.8718"N	80°47'56.2336"W	185.30	78.767	1.96	1.87	-1.40
1425.00	27.910	62.870	1385.86	24.87	55.57	219.23	1697367.26	14254245.10	39°15'12.0634"N	80°47'55.7566"W	226.16	75.777	2.59	2.57	0.71
1520.00	28.220	62.780	1469.69	39.61	75.98	258.99	1697407.01	14254265.51	39°15'12.2643"N	80°47'55.2506"W	269.91	73.650	0.33	0.33	-0.09
1615.00	29.810	63.880	1552.77	54.42	96.65	300.17	1697448.17	14254286.17	39°15'12.4677"N	80°47'54.7266"W	315.35	72.152	1.77	1.67	1.16
1710.00	31.360	67.880	1634.56	67.87	116.36	344.28	1697492.26	14254305.87	39°15'12.6615"N	80°47'54.1653"W	363.41	71.326	2.69	1.63	4.21
1804.00	32.320	70.500	1714.42	78.93	133.96	390.63	1697538.59	14254323.46	39°15'12.8345"N	80°47'53.5756"W	412.96	71.072	1.79	1.02	2.79
1899.00	31.380	74.540	1795.12	87.28	149.03	438.41	1697586.36	14254338.53	39°15'12.9824"N	80°47'52.9678"W	463.05	71.226	2.45	-0.99	4.25
1994.00	30.940	74.590	1876.41	93.72	162.11	485.80	1697633.72	14254351.61	39°15'13.1106"N	80°47'52.3651"W	512.13	71.546	0.46	-0.46	0.05
2088.00	30.810	77.470	1957.10	98.81	173.76	532.59	1697680.50	14254363.25	39°15'13.2247"N	80°47'51.7698"W	560.22	71.931	1.58	-0.14	3.06
2183.00	30.510	77.700	2038.82	102.61	184.17	579.91	1697727.80	14254373.66	39°15'13.3266"N	80°47'51.1681"W	608.45	72.381	0.34	-0.32	0.24
2277.00	30.030	76.210	2120.00	106.85	194.86	626.06	1697773.93	14254384.34	39°15'13.4312"N	80°47'50.5811"W	655.69	72.711	0.95	-0.51	-1.59
2372.00	29.740	74.900	2202.37	112.24	206.67	671.90	1697819.75	14254396.14	39°15'13.5469"N	80°47'49.9981"W	702.97	72.903	0.75	-0.31	-1.38
2466.00	29.390	73.700	2284.13	118.52	219.21	716.55	1697864.38	14254408.69	39°15'13.6699"N	80°47'49.4301"W	749.33	72.990	0.73	-0.37	-1.28
2561.00	29.190	71.140	2366.99	126.32	233.25	760.85	1697908.66	14254422.71	39°15'13.8076"N	80°47'48.8666"W	795.80	72.956	1.33	-0.21	-2.69
2655.00	29.740	72.830	2448.83	134.51	247.62	804.79	1697952.59	14254437.08	39°15'13.9487"N	80°47'48.3076"W	842.02	72.898	0.97	0.59	1.59

RECEIVED
 Office of Oil and Gas
 APR 24 2023
 WV Department of
 Environmental Protection



Actual Wellpath Report

Aspen Unit 2H AWP Proj: 16028'
Page 3 of 10



REFERENCE WELLPATH IDENTIFICATION				
Operator	ANTERO RESOURCES CORPORATION		Well	Aspen Unit 2H
Field	Doddridge		API	47-017-06927-0000
Facility	OXFD 98 Pad		Wellbore	Aspen Unit 2H AWB
Slot	Slot D			

WELLPATH DATA (174 stations)															
MD [ft]	Inclination [°]	Azimuth [°]	TVD [ft]	Vert Sect [ft]	North [ft]	East [ft]	Grid East [US ft]	Grid North [US ft]	Latitude	Longitude	Closure Dist [ft]	Closure Dir [°]	DLS ["/100ft]	Build Rate ["/100ft]	Turn Rate ["/100ft]
2709.00	29.640	72.630	2495.74	138.90	255.60	830.32	1697978.11	14254445.06	39°15'14.0270"N	80°47'47.9829"W	868.77	72.890	0.19	-0.19	0.00
2841.00	28.440	69.550	2611.15	151.09	276.33	890.93	1698038.69	14254465.78	39°15'14.2306"N	80°47'47.2118"W	932.80	72.768	1.45	-0.91	-2.33
2935.00	29.670	71.000	2693.32	160.43	291.73	933.90	1698081.65	14254481.17	39°15'14.3818"N	80°47'46.6651"W	978.40	72.653	1.51	1.31	1.54
3032.00	30.850	77.270	2777.13	167.14	305.03	980.87	1698128.60	14254494.46	39°15'14.5122"N	80°47'46.0676"W	1027.20	72.726	3.48	1.22	6.46
3126.00	31.230	81.260	2857.67	169.52	314.04	1028.47	1698176.18	14254503.48	39°15'14.6002"N	80°47'45.4823"W	1075.35	73.020	2.23	0.40	4.24
3220.00	31.250	81.030	2938.04	170.32	321.55	1076.64	1698224.33	14254510.98	39°15'14.6733"N	80°47'44.8497"W	1123.63	73.371	0.13	0.02	-0.24
3315.00	28.740	80.620	3020.31	171.36	329.11	1123.52	1698271.20	14254518.54	39°15'14.7471"N	80°47'44.2535"W	1170.73	73.673	2.65	-2.64	-0.43
3409.00	27.970	78.340	3103.04	173.38	337.25	1167.41	1698315.07	14254526.68	39°15'14.8265"N	80°47'43.6954"W	1215.15	73.887	1.41	-0.82	-2.43
3504.00	27.680	75.810	3187.06	177.26	347.16	1210.62	1698358.26	14254536.58	39°15'14.9235"N	80°47'43.1458"W	1259.42	73.999	1.28	-0.31	-2.66
3598.00	27.270	73.090	3270.46	183.01	358.78	1252.39	1698400.02	14254548.19	39°15'15.0374"N	80°47'42.6145"W	1302.77	74.014	1.40	-0.44	-2.89
3691.00	26.750	70.480	3353.32	190.56	371.97	1292.51	1698440.11	14254561.38	39°15'15.1669"N	80°47'42.1042"W	1344.97	73.945	1.39	-0.56	-2.81
3786.00	27.590	70.630	3437.83	199.23	386.41	1333.41	1698481.00	14254575.82	39°15'15.3087"N	80°47'41.5837"W	1388.27	73.839	0.89	0.88	0.16
3880.00	27.500	76.150	3521.19	205.80	398.83	1375.03	1698522.60	14254588.23	39°15'15.4305"N	80°47'41.0544"W	1431.70	73.825	2.72	-0.10	5.87
3975.00	27.290	76.630	3605.54	210.15	409.11	1417.51	1698565.07	14254598.51	39°15'15.5312"N	80°47'40.5140"W	1475.37	73.901	0.32	-0.22	0.51
4070.00	26.490	73.490	3690.27	215.39	420.17	1459.01	1698606.55	14254609.55	39°15'15.6396"N	80°47'39.9861"W	1518.31	73.935	1.72	-0.84	-3.31
4164.00	26.450	74.070	3774.42	221.44	431.87	1499.24	1698646.77	14254621.26	39°15'15.7543"N	80°47'39.4744"W	1560.21	73.930	0.28	-0.04	0.62
4259.00	26.330	76.470	3859.52	226.46	442.61	1540.07	1698687.58	14254631.99	39°15'15.8595"N	80°47'38.9550"W	1602.41	73.966	1.13	-0.13	2.53
4353.00	26.230	76.120	3943.80	230.66	452.47	1580.51	1698728.00	14254641.85	39°15'15.9561"N	80°47'38.4407"W	1644.00	74.025	0.20	-0.11	-0.37
4448.00	26.100	74.770	4029.07	235.51	463.00	1621.05	1698768.53	14254652.37	39°15'16.0592"N	80°47'37.9250"W	1685.88	74.060	0.64	-0.14	-1.42
4542.00	26.300	70.380	4113.42	242.37	475.42	1660.62	1698808.08	14254664.79	39°15'16.1811"N	80°47'37.4217"W	1727.34	74.024	2.07	0.21	-4.67
4637.00	26.630	67.790	4198.47	251.90	490.54	1700.16	1698847.60	14254679.90	39°15'16.3296"N	80°47'36.9186"W	1769.51	73.906	1.26	0.35	-2.73
4732.00	25.690	68.900	4283.74	261.86	506.00	1739.08	1698886.51	14254695.36	39°15'16.4816"N	80°47'36.4234"W	1811.20	73.777	1.12	-0.99	1.17
4826.00	25.130	72.530	4368.65	269.82	519.33	1777.13	1698924.54	14254708.68	39°15'16.6124"N	80°47'35.9393"W	1851.46	73.710	1.76	-0.60	3.86
4920.00	27.170	77.960	4453.03	274.68	529.80	1817.17	1698964.57	14254719.15	39°15'16.7150"N	80°47'35.4300"W	1892.83	73.746	3.34	2.17	5.78
5015.00	27.780	77.310	4537.32	278.09	539.18	1859.98	1699007.36	14254728.53	39°15'16.8068"N	80°47'34.8855"W	1936.56	73.834	0.72	0.64	-0.68
5110.00	27.550	74.260	4621.46	282.93	550.01	1902.73	1699050.09	14254739.35	39°15'16.9129"N	80°47'34.3418"W	1980.63	73.877	1.51	-0.24	-3.21
5205.00	28.270	72.790	4705.41	289.56	562.63	1945.37	1699092.71	14254751.96	39°15'17.0366"N	80°47'33.7994"W	2025.09	73.869	1.05	0.76	-1.55
5299.00	28.230	74.790	4788.22	295.98	575.04	1988.08	1699135.41	14254764.38	39°15'17.1584"N	80°47'33.2560"W	2069.58	73.868	1.01	-0.04	2.13
5394.00	27.590	75.850	4872.17	301.22	586.32	2031.10	1699178.41	14254775.64	39°15'17.2688"N	80°47'32.7089"W	2114.03	73.898	0.85	-0.67	1.12
5488.00	27.260	74.720	4955.60	306.35	597.31	2072.97	1699220.27	14254786.63	39°15'17.3765"N	80°47'32.1763"W	2157.31	73.926	0.66	-0.35	-1.20

RECEIVED
 Office of Oil and Gas
 APR 24 2023
 WV Department of
 Environmental Protection



Actual Wellpath Report

Aspen Unit 2H AWP Proj: 16028'

Page 4 of 10



REFERENCE WELLPATH IDENTIFICATION				
Operator	ANTERO RESOURCES CORPORATION		Well	Aspen Unit 2H
Field	Doddridge		API	47-017-06927-0000
Facility	OXFD 98 Pad		Wellbore	Aspen Unit 2H AWB
Slot	Slot D			

WELLPATH DATA (174 stations)															
MD [ft]	Inclination [°]	Azimuth [°]	TVD [ft]	Vert Sect [ft]	North [ft]	East [ft]	Grid East [US ft]	Grid North [US ft]	Latitude	Longitude	Closure Dist [ft]	Closure Dir [°]	DLS [°/100ft]	Build Rate [°/100ft]	Turn Rate [°/100ft]
5583.00	26.990	75.010	5040.16	311.80	608.62	2114.78	1699262.06	14254797.94	39°15'17.4874"N	80°47'31.6444"W	2200.62	73.945	0.32	-0.28	0.31
5678.00	27.630	76.190	5124.57	316.72	619.46	2157.00	1699304.26	14254808.77	39°15'17.5935"N	80°47'31.1075"W	2244.18	73.977	0.88	0.67	1.24
5772.00	28.640	77.760	5207.46	320.66	629.43	2200.18	1699347.43	14254818.74	39°15'17.6911"N	80°47'30.5582"W	2288.45	74.035	1.33	1.07	1.67
5867.00	29.330	79.920	5290.56	323.26	638.33	2245.34	1699392.57	14254827.64	39°15'17.7781"N	80°47'29.9839"W	2334.32	74.130	1.32	0.73	2.27
5961.00	26.770	76.790	5373.52	326.09	647.20	2288.63	1699435.84	14254836.51	39°15'17.8648"N	80°47'29.4334"W	2378.38	74.210	3.14	-2.72	-3.33
6056.00	26.550	78.300	5458.42	329.47	656.40	2330.25	1699477.44	14254845.70	39°15'17.9547"N	80°47'28.9040"W	2420.93	74.268	0.75	-0.23	1.59
6151.00	26.170	78.160	5543.54	332.31	665.00	2371.54	1699518.72	14254854.30	39°15'18.0388"N	80°47'28.3788"W	2463.01	74.336	0.41	-0.40	-0.15
6247.00	25.270	77.620	5630.03	335.36	673.74	2412.27	1699559.43	14254863.03	39°15'18.1242"N	80°47'27.8608"W	2504.59	74.395	0.97	-0.94	-0.56
6342.00	25.740	76.830	5715.77	338.83	682.79	2452.17	1699599.31	14254872.07	39°15'18.2127"N	80°47'27.3534"W	2545.45	74.441	0.61	0.49	-0.83
6436.00	26.350	75.580	5800.23	343.07	692.63	2492.25	1699639.37	14254881.92	39°15'18.3091"N	80°47'26.8436"W	2586.70	74.469	0.87	0.65	-1.33
6531.00	26.730	79.730	5885.22	346.34	701.69	2533.69	1699680.80	14254890.97	39°15'18.3977"N	80°47'26.3165"W	2629.06	74.520	1.99	0.40	4.37
6595.00	26.980	79.470	5942.32	347.59	706.91	2562.13	1699709.23	14254896.19	39°15'18.4487"N	80°47'25.9548"W	2657.86	74.575	0.43	0.39	-0.41
6649.00	28.890	74.090	5990.03	349.97	712.73	2586.72	1699733.81	14254902.00	39°15'18.5056"N	80°47'25.6420"W	2683.11	74.595	5.85	3.54	-9.96
6744.00	28.690	56.320	6073.44	363.10	731.70	2627.84	1699774.92	14254920.97	39°15'18.6921"N	80°47'25.1187"W	2727.81	74.441	8.98	-0.21	-18.71
6838.00	33.060	45.730	6154.16	388.14	762.15	2665.02	1699812.08	14254951.40	39°15'18.9922"N	80°47'24.6452"W	2771.86	74.040	7.40	4.65	-11.27
6933.00	39.060	32.580	6231.04	426.36	805.56	2699.78	1699846.82	14254994.80	39°15'19.4205"N	80°47'24.2021"W	2817.40	73.386	10.28	6.32	-13.84
7027.00	41.290	17.680	6303.03	476.98	860.20	2725.21	1699872.24	14255049.42	39°15'19.9600"N	80°47'23.8772"W	2857.74	72.482	10.48	2.37	-15.85
7122.00	49.260	15.030	6369.83	538.50	924.93	2744.09	1699891.12	14255114.12	39°15'20.5993"N	80°47'23.6352"W	2895.78	71.373	8.62	8.39	-2.79
7216.00	56.110	10.380	6426.80	608.44	997.81	2760.38	1699907.40	14255186.98	39°15'21.3193"N	80°47'23.4260"W	2935.19	70.126	8.28	7.29	-4.95
7310.00	60.060	1.020	6476.57	685.88	1077.07	2768.15	1699915.17	14255266.20	39°15'22.1025"N	80°47'23.3249"W	2970.31	68.739	9.43	4.20	-9.96
7405.00	60.560	1.560	6523.62	767.34	1159.58	2770.01	1699917.03	14255348.67	39°15'22.9179"N	80°47'23.2988"W	3002.93	67.285	0.72	0.53	0.57
7498.00	66.140	359.450	6565.32	849.53	1242.65	2770.71	1699917.72	14255431.72	39°15'23.7390"N	80°47'23.2875"W	3036.61	65.844	6.33	6.00	-2.27
7592.00	72.010	356.130	6598.89	936.85	1330.33	2767.27	1699914.29	14255519.36	39°15'24.6057"N	80°47'23.3286"W	3070.44	64.325	7.06	6.24	-3.53
7687.00	77.560	350.490	6623.83	1028.42	1421.29	2756.54	1699903.57	14255610.29	39°15'25.5050"N	80°47'23.4623"W	3101.39	62.724	8.18	5.84	-5.94
7734.00	77.780	351.180	6633.87	1074.33	1466.62	2749.23	1699896.25	14255655.60	39°15'25.9532"N	80°47'23.5539"W	3115.97	61.922	1.51	0.47	1.47
7781.00	80.040	351.260	6642.91	1120.44	1512.20	2742.19	1699889.22	14255701.16	39°15'26.4038"N	80°47'23.6421"W	3131.51	61.125	4.81	4.81	0.17
7876.00	85.840	351.490	6654.58	1214.67	1605.38	2728.06	1699875.09	14255794.30	39°15'27.3251"N	80°47'23.8190"W	3165.37	59.525	6.11	6.11	0.24
7970.00	89.880	350.730	6658.09	1308.57	1698.16	2713.54	1699860.58	14255887.05	39°15'28.2425"N	80°47'24.0007"W	3201.11	57.961	4.37	4.30	-0.81
8064.00	89.880	353.140	6658.28	1402.57	1791.23	2700.36	1699847.40	14255980.07	39°15'29.1626"N	80°47'24.1656"W	3240.44	56.443	2.56	0.00	2.56
8159.00	91.230	351.120	6657.36	1497.56	1885.32	2687.35	1699834.40	14256074.13	39°15'30.0929"N	80°47'24.3282"W	3282.73	54.948	2.56	1.42	-2.13

RECEIVED
Office of Oil and Gas
APR 24 2023
WV Department of
Environmental Protection



Actual Wellpath Report

Aspen Unit 2H AWP Proj: 16028'
Page 5 of 10



REFERENCE WELLPATH IDENTIFICATION			
Operator	ANTERO RESOURCES CORPORATION	Well	Aspen Unit 2H
Field	Doddridge	API	47-017-06927-0000
Facility	OXFD 98 Pad	Wellbore	Aspen Unit 2H AWB
Slot	Slot D		

WELLPATH DATA (174 stations)																
MD [ft]	Inclination [°]	Azimuth [°]	TVD [ft]	Vert Sect [ft]	North [ft]	East [ft]	Grid East [US ft]	Grid North [US ft]	Latitude	Longitude	Closure Dist [ft]	Closure Dir [°]	DLS ["/100ft]	Build Rate ["/100ft]	Turn Rate ["/100ft]	
8253.00	89.480	350.300	6656.78	1591.52	1978.08	2672.18	1699819.23	14256166.85	39°15'31.0101"N	80°47'24.5184"W	3324.66	53.489	2.06	-1.86	-0.87	
8348.00	90.710	353.070	6656.62	1686.51	2072.07	2658.44	1699805.50	14256260.81	39°15'31.9393"N	80°47'24.6902"W	3370.58	52.066	3.19	1.29	2.92	
8442.00	91.050	351.380	6655.18	1780.49	2165.19	2645.73	1699792.79	14256353.89	39°15'32.8600"N	80°47'24.8491"W	3418.76	50.704	1.83	0.36	-1.80	
8536.00	89.380	352.940	6654.83	1874.49	2258.31	2632.91	1699779.98	14256446.97	39°15'33.7806"N	80°47'25.0094"W	3468.74	49.380	2.43	-1.78	1.66	
8631.00	90.060	354.480	6655.29	1969.44	2352.73	2622.50	1699769.57	14256541.35	39°15'34.7141"N	80°47'25.1389"W	3523.19	48.104	1.77	0.72	1.62	
8725.00	91.110	352.530	6654.33	2063.40	2446.12	2611.87	1699758.95	14256634.70	39°15'35.6374"N	80°47'25.2713"W	3578.45	46.877	2.36	1.12	-2.07	
8820.00	90.430	351.650	6653.05	2158.39	2540.20	2598.79	1699745.88	14256728.75	39°15'36.5676"N	80°47'25.4348"W	3634.06	45.653	1.17	-0.72	-0.93	
8914.00	91.350	353.050	6651.59	2252.38	2633.35	2586.28	1699733.37	14256821.86	39°15'37.4885"N	80°47'25.5911"W	3690.99	44.483	1.78	0.98	1.49	
9009.00	90.980	349.170	6649.66	2347.33	2727.17	2571.61	1699718.70	14256915.65	39°15'38.4162"N	80°47'25.7749"W	3748.42	43.318	4.10	-0.39	-4.08	
9103.00	90.250	350.170	6648.65	2441.24	2819.64	2554.75	1699701.85	14257008.08	39°15'39.3305"N	80°47'25.9865"W	3804.88	42.178	1.32	-0.78	1.06	
9197.00	91.390	353.440	6647.31	2535.21	2912.66	2541.36	1699688.46	14257101.06	39°15'40.2502"N	80°47'26.1540"W	3865.50	41.105	3.68	1.21	3.48	
9292.00	90.280	352.310	6645.92	2630.19	3006.91	2529.57	1699676.69	14257195.27	39°15'41.1820"N	80°47'26.3010"W	3929.41	40.072	1.67	-1.17	-1.19	
9387.00	91.510	352.040	6644.44	2725.18	3101.01	2516.64	1699663.76	14257289.34	39°15'42.1124"N	80°47'26.4627"W	3993.72	39.061	1.33	1.29	-0.28	
9481.00	91.320	352.090	6642.12	2819.15	3194.09	2503.67	1699650.79	14257382.37	39°15'43.0326"N	80°47'26.6249"W	4058.39	38.091	0.21	-0.20	0.05	
9576.00	89.750	353.020	6641.23	2914.14	3288.28	2491.36	1699638.49	14257476.53	39°15'43.9638"N	80°47'26.7786"W	4125.49	37.149	1.92	-1.65	0.98	
9671.00	89.720	352.960	6641.67	3009.12	3382.57	2479.77	1699626.90	14257570.78	39°15'44.8960"N	80°47'26.9232"W	4194.16	36.245	0.07	-0.03	-0.06	
9765.00	89.200	352.060	6642.56	3103.11	3475.76	2467.51	1699614.65	14257663.93	39°15'45.8174"N	80°47'27.0763"W	4262.57	35.372	1.11	-0.55	-0.96	
9860.00	90.150	352.330	6643.09	3198.11	3569.88	2454.61	1699601.76	14257758.01	39°15'46.7479"N	80°47'27.2375"W	4332.34	34.512	1.04	1.00	0.28	
9954.00	90.030	352.490	6642.95	3292.11	3663.05	2442.20	1699589.35	14257851.15	39°15'47.6691"N	80°47'27.3926"W	4402.53	33.692	0.21	-0.13	0.17	
10048.00	89.140	352.920	6643.63	3386.10	3756.29	2430.26	1699577.41	14257944.35	39°15'48.5909"N	80°47'27.5416"W	4473.91	32.902	1.05	-0.95	0.46	
10143.00	90.550	351.340	6643.88	3481.10	3850.39	2417.26	1699564.41	14258038.41	39°15'49.5213"N	80°47'27.7042"W	4546.27	32.120	2.23	1.48	-1.66	
10238.00	89.720	353.650	6643.66	3576.09	3944.57	2404.85	1699552.01	14258132.55	39°15'50.4524"N	80°47'27.8592"W	4619.84	31.369	2.58	-0.87	2.43	
10333.00	91.750	358.520	6642.44	3670.81	4039.30	2398.36	1699545.53	14258227.25	39°15'51.3889"N	80°47'27.9389"W	4697.67	30.700	5.55	2.14	5.13	
10427.00	89.600	352.260	6641.33	3764.60	4132.94	2390.81	1699537.98	14258320.85	39°15'52.3145"N	80°47'28.0321"W	4774.64	30.048	7.04	-2.29	-6.66	
10522.00	89.940	352.760	6641.71	3859.60	4227.13	2378.43	1699525.60	14258415.00	39°15'53.2458"N	80°47'28.1868"W	4850.31	29.365	0.64	0.36	0.53	
10617.00	89.910	352.450	6641.84	3954.59	4321.34	2366.20	1699513.38	14258509.18	39°15'54.1772"N	80°47'28.3395"W	4926.75	28.703	0.33	-0.03	-0.33	
10712.00	90.220	353.360	6641.73	4049.58	4415.61	2354.47	1699501.65	14258603.41	39°15'55.1092"N	80°47'28.4859"W	5004.11	28.067	1.01	0.33	0.96	
10806.00	89.850	353.090	6641.67	4143.56	4508.95	2343.38	1699490.57	14258696.72	39°15'56.0320"N	80°47'28.6242"W	5081.54	27.462	0.49	-0.39	-0.29	
10901.00	89.690	352.510	6642.05	4238.55	4603.20	2331.47	1699478.66	14258790.93	39°15'56.9639"N	80°47'28.7728"W	5159.96	26.862	0.63	-0.17	-0.61	
10995.00	90.580	352.660	6641.83	4332.55	4696.41	2319.34	1699466.54	14258884.10	39°15'57.8854"N	80°47'28.9243"W	5237.91	26.283	0.96	0.95	0.16	

RECEIVED
 Office of Oil and Gas
 APR 24 2023
 WY Department of
 Environmental Protection



Actual Wellpath Report

Aspen Unit 2H AWP Proj: 16028'
Page 6 of 10



REFERENCE WELLPATH IDENTIFICATION				
Operator	ANTERO RESOURCES CORPORATION		Well	Aspen Unit 2H
Field	Doddridge		API	47-017-06927-0000
Facility	OXFD 98 Pad		Wellbore	Aspen Unit 2H AWB
Slot	Slot D			

WELLPATH DATA (174 stations)																
MD [ft]	Inclination [°]	Azimuth [°]	TVD [ft]	Vert Sect [ft]	North [ft]	East [ft]	Grid East [US ft]	Grid North [US ft]	Latitude	Longitude	Closure Dist [ft]	Closure Dir [°]	DLS [°/100ft]	Build Rate [°/100ft]	Turn Rate [°/100ft]	
11090.00	88.860	353.510	6642.30	4427.53	4790.72	2307.90	1699455.10	14258978.37	39°15'58.8177"N	80°47'29.0670"W	5317.65	25.722	2.02	-1.81	0.89	
11185.00	89.570	352.550	6643.60	4522.50	4885.00	2296.38	1699443.58	14259072.62	39°15'59.7499"N	80°47'29.2108"W	5397.83	25.178	1.26	0.75	-1.01	
11279.00	89.750	352.500	6644.16	4616.50	4978.20	2284.15	1699431.36	14259165.78	39°16'0.6714"N	80°47'29.3635"W	5477.21	24.647	0.20	0.19	-0.05	
11373.00	90.310	353.070	6644.11	4710.49	5071.46	2272.34	1699419.56	14259259.00	39°16'1.5933"N	80°47'29.5109"W	5557.27	24.135	0.85	0.60	0.61	
11467.00	89.350	352.830	6644.39	4804.48	5164.75	2260.81	1699408.03	14259352.25	39°16'2.5156"N	80°47'29.6548"W	5637.89	23.641	1.05	-1.02	-0.26	
11562.00	89.170	352.040	6645.61	4899.47	5258.91	2248.30	1699395.52	14259446.38	39°16'3.4466"N	80°47'29.8111"W	5719.35	23.148	0.85	-0.19	-0.83	
11656.00	89.880	350.250	6646.39	4993.45	5351.78	2233.83	1699381.06	14259539.21	39°16'4.3649"N	80°47'29.9923"W	5799.28	22.656	2.05	0.76	-1.90	
11751.00	88.980	353.310	6647.34	5088.43	5445.79	2220.25	1699367.49	14259633.18	39°16'5.2943"N	80°47'30.1622"W	5881.00	22.181	3.36	-0.95	3.22	
11846.00	90.370	350.800	6647.88	5183.42	5539.87	2207.12	1699354.36	14259727.22	39°16'6.2244"N	80°47'30.3264"W	5963.35	21.723	3.02	1.46	-2.64	
11941.00	89.720	352.420	6647.80	5278.41	5633.85	2193.26	1699340.51	14259821.16	39°16'7.1536"N	80°47'30.4999"W	6045.71	21.271	1.84	-0.68	1.71	
12035.00	89.020	351.520	6648.84	5372.41	5726.92	2180.13	1699327.38	14259914.20	39°16'8.0738"N	80°47'30.6641"W	6127.85	20.841	1.21	-0.74	-0.96	
12130.00	89.540	351.270	6650.03	5467.39	5820.84	2165.92	1699313.17	14260008.08	39°16'9.0024"N	80°47'30.8421"W	6210.75	20.410	0.61	0.55	-0.26	
12224.00	89.820	352.080	6650.55	5561.39	5913.85	2152.31	1699299.57	14260101.05	39°16'9.9220"N	80°47'31.0124"W	6293.33	19.999	0.91	0.30	0.86	
12319.00	89.600	351.880	6651.04	5656.38	6007.92	2139.05	1699286.32	14260195.08	39°16'10.8521"N	80°47'31.1782"W	6377.35	19.598	0.31	-0.23	-0.21	
12414.00	89.630	351.480	6651.67	5751.38	6101.92	2125.31	1699272.58	14260289.05	39°16'11.7814"N	80°47'31.3502"W	6461.45	19.203	0.42	0.03	-0.42	
12508.00	89.540	351.950	6652.35	5845.37	6194.93	2111.76	1699259.04	14260382.02	39°16'12.7011"N	80°47'31.5197"W	6544.98	18.824	0.51	-0.10	0.50	
12602.00	89.630	351.300	6653.04	5939.37	6287.93	2098.07	1699245.36	14260474.98	39°16'13.6205"N	80°47'31.6911"W	6628.72	18.452	0.70	0.10	-0.69	
12697.00	89.320	351.230	6653.91	6034.35	6381.82	2083.65	1699230.94	14260568.84	39°16'14.5489"N	80°47'31.8718"W	6713.36	18.082	0.33	-0.33	-0.07	
12791.00	88.920	351.590	6655.35	6128.34	6474.75	2069.61	1699216.90	14260661.74	39°16'15.4677"N	80°47'32.0476"W	6797.48	17.726	0.57	-0.43	0.38	
12886.00	88.980	357.300	6657.09	6223.20	6569.25	2060.42	1699207.72	14260756.20	39°16'16.4019"N	80°47'32.1617"W	6884.80	17.414	6.01	0.06	5.01	
12981.00	89.170	0.130	6658.63	6317.54	6664.21	2058.29	1699205.59	14260851.11	39°16'17.3405"N	80°47'32.1860"W	6974.83	17.164	2.99	0.20	2.98	
13075.00	89.140	356.150	6660.01	6410.99	6758.13	2055.24	1699202.54	14260945.00	39°16'18.2689"N	80°47'32.2220"W	7063.73	16.915	4.23	-0.03	-4.23	
13170.00	89.230	352.170	6661.36	6505.90	6852.61	2045.57	1699192.88	14261039.44	39°16'19.2029"N	80°47'32.3422"W	7151.41	16.621	4.19	0.09	-4.19	
13264.00	89.260	350.210	6662.60	6599.88	6945.49	2031.18	1699178.49	14261132.28	39°16'20.1212"N	80°47'32.5225"W	7236.40	16.301	2.09	0.03	-2.09	
13359.00	88.830	350.020	6664.19	6694.81	7039.06	2014.87	1699162.19	14261225.82	39°16'21.0464"N	80°47'32.7271"W	7321.76	15.973	0.49	-0.45	-0.20	
13454.00	88.860	348.740	6666.10	6789.68	7132.41	1997.37	1699144.69	14261319.13	39°16'21.9695"N	80°47'32.9469"W	7406.81	15.644	1.35	0.03	-1.35	
13548.00	89.110	349.880	6667.77	6883.55	7224.77	1979.93	1699127.27	14261411.45	39°16'22.8827"N	80°47'33.1659"W	7491.15	15.326	1.24	0.27	1.21	
13643.00	89.080	349.930	6669.27	6978.47	7318.28	1963.28	1699110.62	14261504.93	39°16'23.8074"N	80°47'33.3749"W	7577.06	15.017	0.06	-0.03	0.05	
13738.00	88.770	349.830	6671.05	7073.38	7411.79	1946.59	1699093.94	14261598.40	39°16'24.7319"N	80°47'33.5844"W	7663.15	14.716	0.34	-0.33	-0.11	
13832.00	88.610	350.190	6673.20	7167.30	7504.34	1930.29	1699077.64	14261690.91	39°16'25.6470"N	80°47'33.7890"W	7748.62	14.425	0.42	-0.17	0.38	

RECEIVED
Office of Oil and Gas
APR 24 2023
WV Department of
Environmental Protection



Actual Wellpath Report

Aspen Unit 2H AWP Proj: 16028'
Page 7 of 10



REFERENCE WELLPATH IDENTIFICATION			
Operator	ANTERO RESOURCES CORPORATION	Well	Aspen Unit 2H
Field	Doddridge	API	47-017-06927-0000
Facility	OXFD 98 Pad	Wellbore	Aspen Unit 2H AWB
Slot	Slot D		

WELLPATH DATA (174 stations) † = interpolated, ‡ = extrapolated station

MD [ft]	Inclination [°]	Azimuth [°]	TVD [ft]	Vert Sect [ft]	North [ft]	East [ft]	Grid East [US ft]	Grid North [US ft]	Latitude	Longitude	Closure Dist [ft]	Closure Dir [°]	DLS ["/100ft]	Build Rate ["/100ft]	Turn Rate ["/100ft]
13927.00	88.740	349.340	6675.40	7262.19	7597.80	1913.42	1699060.77	14261784.34	39°16'26.5712"N	80°47'34.0009"W	7835.03	14.135	0.90	0.14	-0.89
14021.00	89.320	349.990	6676.99	7356.09	7690.26	1896.56	1699043.92	14261876.76	39°16'27.4854"N	80°47'34.2126"W	7920.67	13.854	0.93	0.62	0.69
14116.00	88.950	349.660	6678.42	7451.01	7783.76	1879.78	1699027.15	14261970.22	39°16'28.4099"N	80°47'34.4232"W	8007.52	13.577	0.52	-0.39	-0.35
14211.00	89.230	349.880	6679.93	7545.92	7877.24	1862.91	1699010.28	14262063.66	39°16'29.3342"N	80°47'34.6350"W	8094.52	13.306	0.37	0.29	0.23
14306.00	88.120	352.380	6682.13	7640.87	7971.07	1848.26	1698995.65	14262157.45	39°16'30.2619"N	80°47'34.8185"W	8182.54	13.055	2.88	-1.17	2.63
14400.00	88.280	351.240	6685.08	7734.82	8064.06	1834.88	1698982.27	14262250.41	39°16'31.1813"N	80°47'34.9860"W	8270.18	12.819	1.22	0.17	-1.21
14495.00	88.460	351.610	6687.78	7829.78	8157.96	1820.72	1698968.11	14262344.27	39°16'32.1097"N	80°47'35.1633"W	8358.67	12.581	0.43	0.19	0.39
14590.00	91.020	356.160	6688.21	7924.70	8252.39	1810.60	1698958.00	14262438.66	39°16'33.0432"N	80°47'35.2892"W	8448.68	12.375	5.50	2.69	4.79
14684.00	88.950	351.690	6688.24	8018.62	8345.83	1800.66	1698948.06	14262532.06	39°16'33.9670"N	80°47'35.4129"W	8537.87	12.175	5.24	-2.20	-4.76
14779.00	89.110	351.570	6689.85	8113.60	8439.80	1786.83	1698934.24	14262626.00	39°16'34.8961"N	80°47'35.5860"W	8626.88	11.954	0.21	0.17	-0.13
14874.00	88.740	351.840	6691.63	8208.58	8533.79	1773.13	1698920.54	14262719.95	39°16'35.8254"N	80°47'35.7575"W	8716.05	11.738	0.48	-0.39	0.28
14968.00	88.950	351.440	6693.52	8302.56	8626.77	1759.46	1698906.88	14262812.90	39°16'36.7447"N	80°47'35.9286"W	8804.37	11.528	0.48	0.22	-0.43
15062.00	89.720	350.960	6694.61	8396.54	8719.66	1745.08	1698892.51	14262905.75	39°16'37.6631"N	80°47'36.1087"W	8892.57	11.317	0.97	0.82	-0.51
15157.00	89.170	353.820	6695.53	8491.53	8813.81	1732.51	1698879.94	14262999.86	39°16'38.5939"N	80°47'36.2660"W	8982.47	11.121	3.07	-0.58	3.01
15252.00	88.310	350.950	6697.62	8586.49	8907.94	1719.92	1698867.36	14263093.95	39°16'39.5246"N	80°47'36.4233"W	9072.46	10.928	3.15	-0.91	-3.02
15346.00	88.860	353.750	6699.95	8680.45	9001.06	1707.41	1698854.85	14263187.04	39°16'40.4453"N	80°47'36.5796"W	9161.57	10.741	3.03	0.59	2.98
15441.00	88.580	350.380	6702.07	8775.42	9095.12	1694.30	1698841.75	14263281.05	39°16'41.3751"N	80°47'36.7436"W	9251.58	10.553	3.56	-0.29	-3.55
15535.00	89.780	352.520	6703.41	8869.39	9188.06	1680.33	1698827.78	14263373.96	39°16'42.2940"N	80°47'36.9186"W	9340.44	10.364	2.61	1.28	2.28
15630.00	88.280	349.150	6705.02	8964.34	9281.81	1665.21	1698812.66	14263467.68	39°16'43.2211"N	80°47'37.1082"W	9430.00	10.171	3.88	-1.58	-3.55
15724.00	88.310	351.030	6707.82	9058.24	9374.37	1649.04	1698796.50	14263560.19	39°16'44.1362"N	80°47'37.3111"W	9518.30	9.977	2.00	0.03	2.00
15819.00	89.020	354.200	6710.03	9153.19	9468.54	1636.83	1698784.30	14263654.33	39°16'45.0672"N	80°47'37.4636"W	9608.98	9.808	3.42	0.75	3.34
15913.00	89.480	349.950	6711.26	9247.16	9561.61	1623.87	1698771.35	14263747.36	39°16'45.9874"N	80°47'37.6257"W	9698.53	9.639	4.55	0.49	-4.52
16003.00	87.880	352.550	6713.34	9337.12	9650.53	1610.19	1698757.67	14263836.25	39°16'46.8666"N	80°47'37.7972"W	9783.94	9.473	3.39	-1.78	2.89
16028.00†	87.880	352.550	6714.26	9362.10	9675.30	1606.95	1698754.43	14263861.01	39°16'47.1115"N	80°47'37.8376"W	9807.84	9.430	0.00	0.00	0.00

RECEIVED
 Office of Oil and Gas
 APR 24 2023
 WV Department of
 Environmental Protection



Actual Wellpath Report

Aspen Unit 2H AWP Proj: 16028'

Page 8 of 10



REFERENCE WELLPATH IDENTIFICATION			
Operator	ANTERO RESOURCES CORPORATION	Well	Aspen Unit 2H
Field	Doddridge	API	47-017-06927-0000
Facility	OXFD 98 Pad	Wellbore	Aspen Unit 2H AWB
Slot	Slot D		

HOLE & CASING SECTIONS - Ref Wellbore: Aspen Unit 2H AWB Ref Wellpath: Aspen Unit 2H AWP Proj: 16028'									
String/Diameter	Start MD [ft]	End MD [ft]	Interval [ft]	Start TVD [ft]	End TVD [ft]	Start N/S [ft]	Start E/W [ft]	End N/S [ft]	End E/W [ft]
20in Conductor	25.50	126.00	100.50	25.50	126.00	0.00	0.00	0.13	0.25
17.5in Open Hole	126.00	348.00	222.00	126.00	348.00	0.13	0.25	-0.58	1.36
13.375in Casing Surface	25.50	328.00	302.50	25.50	328.00	0.00	0.00	-0.44	1.25
12.25in Open Hole	348.00	2787.00	2439.00	348.00	2563.78	-0.58	1.36	267.55	866.54
9.625in Casing Intermediate	25.50	2767.00	2741.50	25.50	2546.29	0.00	0.00	264.40	857.37
8.75in Open Hole	2787.00	6606.00	3819.00	2563.78	5952.11	267.55	866.54	707.88	2567.05
8.5in Open Hole	6606.00	16028.00	9422.00	5952.11	6714.26	707.88	2567.05	9675.30	1606.95
5.5in Casing Production	25.50	16008.00	15982.50	25.50	6713.52	0.00	0.00	9655.48	1609.54

TARGETS								
Name	TVD [ft]	North [ft]	East [ft]	Grid East [US ft]	Grid North [US ft]	Latitude	Longitude	Shape
Aspen Unit 2H POE Rev-4	6602.00	1291.79	2776.51	1699923.52	14255480.84	39°15'24.2246"N	80°47'23.2123"W	point
Aspen Unit 2H BHL Rev-3	6627.00	9681.79	1610.90	1698758.38	14263867.49	39°16'47.1755"N	80°47'37.7872"W	point
Aspen Unit 2H LP Rev-3	6627.00	1471.94	2751.48	1699898.50	14255660.91	39°15'26.0057"N	80°47'23.5252"W	point
Aspen Unit 2H 50' L/R Hard Line Rev-2	7000.00	5486.79	2193.70	1699340.95	14259674.17	39°16'5.7001"N	80°47'30.4986"W	rectangle
2D Rectangle 8470.57 x 100.								

RECEIVED
 Office of Oil and Gas
 APR 24 2023
 WV Department of
 Environmental Protection



Actual Wellpath Report

Aspen Unit 2H AWP Proj: 16028'

Page 9 of 10



REFERENCE WELLPATH IDENTIFICATION			
Operator	ANTERO RESOURCES CORPORATION	Well	Aspen Unit 2H
Field	Doddridge	API	47-017-06927-0000
Facility	OXFD 98 Pad	Wellbore	Aspen Unit 2H AWB
Slot	Slot D		

WELLPATH COMPOSITION - Ref Wellbore: Aspen Unit 2H AWB Ref Wellpath: Aspen Unit 2H AWP Proj: 16028'					
Start MD [ft]	End MD [ft]	Positional Uncertainty Model	Log Name/Comment	Wellbore	Survey Date
25.50	291.00	Gyrodata 2015 - GC+WIR+DPIPE	01_Gyrodata MS Gyro <17-1/2"> (100'-291')	Aspen Unit 2H AWB	8/19/2022
291.00	2709.00	BH NaviTrak (2019) (Axial Corr+HRGM)	02_APS EM <12-1/4"> (291')(413'-2709')	Aspen Unit 2H AWB	8/19/2022
2709.00	6531.00	BH NaviTrak (2019) (Axial Corr+HRGM)	03_APS EM <8-3/4"> (2709')(2841'-6531')	Aspen Unit 2H AWB	9/13/2022
6531.00	16028.00	BH AutoTrak Curve/eXpress (2019) (HRGM, Short spacing)	04_BH AT Curve <8-1/2"> (6531')(6595'-16003')	Aspen Unit 2H AWB	9/13/2022

RECEIVED
 Office of Oil and Gas
 APR 24 2023
 WV Department of Environmental Protection



Actual Wellpath Report

Aspen Unit 2H AWP Proj: 16028'

Page 10 of 10



REFERENCE WELLPATH IDENTIFICATION

Operator	ANTERO RESOURCES CORPORATION	Well	Aspen Unit 2H
Field	Doddridge	API	47-017-06927-0000
Facility	OXFD 98 Pad	Wellbore	Aspen Unit 2H AWB
Slot	Slot D		

COMMENTS

Wellpath general comments

API: 47-017-06927-0000

BH Job #: 111456653

Rig: H&P 317

Duration: 9/15/2022-9/18/2022

Gyrodata MS Gyro <17-1/2"> (100'-291')

APS EM <12-1/4"> (291')(413'-2709')

APS EM <8-3/4"> (2709')(2841'-6531')

BH AT Curve <8-1/2"> (6531')(6595'-16003')

Sycamore: 7016' MD

Middlesex: 7217' MD

Burkett: 7488' MD

Tully: 7562' MD

Marcellus POE: 7725' MD

Projected MD at TD: 16028'

RECEIVED
Office of Oil and Gas
APR 24 2023
WV Department of
Environmental Protection