



west virginia department of environmental protection

Office of Oil and Gas
601 57th Street, S.E.
Charleston, WV 25304
(304) 926-0450
fax: (304) 926-0452

Harold D. Ward, Cabinet Secretary
www.dep.wv.gov

Monday, September 12, 2022
PERMIT MODIFICATION APPROVAL
Horizontal 6A / New Drill

HG ENERGY II APPALACHIA, LLC
5260 DUPONT ROAD

PARKERSBURG, WV 26101

Re: Permit Modification Approval for SCHMIDT 1222 S-3H
47-017-06911-00-00

Lateral Revision/Extension

HG ENERGY II APPALACHIA, LLC

The Office of Oil and Gas has reviewed the attached permit modification for the above referenced permit. The attached modification has been approved and well work may begin. Please be reminded that the oil and gas inspector is to be notified twenty-four (24) hours before permitted well work is commenced.

If there are any questions, please feel free to contact me at (304) 926- 0450.

A blue ink signature of James A. Martin.

James A. Martin
Chief

Operator's Well Number: SCHMIDT 1222 S-3H
Farm Name: JOHN A SCHMIDT
U.S. WELL NUMBER: 47-017-06911-00-00
Horizontal 6A New Drill
Date Modification Issued: 9/12/2022

Promoting a healthy environment.

09/16/2022

EXP MOD
\$5000⁰⁰⁰
C# 4032066

STATE OF WEST VIRGINIA
DEPARTMENT OF ENVIRONMENTAL PROTECTION, OFFICE OF OIL AND GAS
WELL WORK PERMIT APPLICATION

1) Well Operator: HG Energy II Appalachia, L 494519932 Doddridge Cove Vadis 7.5'
Operator ID County District Quadrangle

2) Operator's Well Number: Schmidt 1222 S-3H Well Pad Name: Schmidt 1222

3) Farm Name/Surface Owner: John A Schmidt Public Road Access: SLS 29

4) Elevation, current ground: 1117' Elevation, proposed post-construction: 1111'

5) Well Type (a) Gas x Oil _____ Underground Storage _____
Other _____

(b) If Gas Shallow x Deep _____
Horizontal x _____

SPW
8/23/2022

6) Existing Pad: Yes or No No

7) Proposed Target Formation(s), Depth(s), Anticipated Thickness and Expected Pressure(s):
Marcellus at 6890' - 6965' and 75' in thickness. Anticipated pressure at 4314#.

8) Proposed Total Vertical Depth: 6964'

9) Formation at Total Vertical Depth: Marcellus

10) Proposed Total Measured Depth: 28,259'

11) Proposed Horizontal Leg Length: 20,611'

12) Approximate Fresh Water Strata Depths: 150', 118', 826'

13) Method to Determine Fresh Water Depths: Nearest offset well data, (47-017-02906, 47-017-02480, 4233)

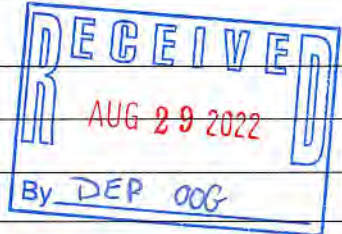
14) Approximate Saltwater Depths: NA

15) Approximate Coal Seam Depths: 220' - 225', 428'-438', 495'-501'

16) Approximate Depth to Possible Void (coal mine, karst, other): None

17) Does Proposed well location contain coal seams directly overlying or adjacent to an active mine? Yes _____ No X

(a) If Yes, provide Mine Info: Name: _____
Depth: _____
Seam: _____
Owner: _____



18)

CASING AND TUBING PROGRAM

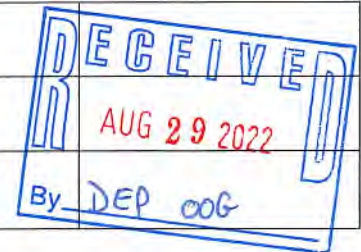
TYPE	Size (in)	New or Used	Grade	Weight per ft. (lb/ft)	FOOTAGE: For Drilling (ft)	INTERVALS: Left in Well (ft)	CEMENT: Fill-up (Cu. Ft.)/CTS
Conductor	20"	New	LS	94	120'	120' ✓	Drilled In
Fresh Water	13.375"	NEW	J-55 BTC	54.5	1000'	1000' ✓	40% excess, yield = 1.18, CTS
Coal							
Intermediate	9 5/8"	NEW	N-80 BTC	40	5151'	5151' ✓	Lead - 40% excess, Tail - 0% Excess <input checked="" type="checkbox"/>
Production	5 1/2"	NEW	P-110 HP	23	28259'	28259' ✓	Lead - Yield = 1.19, Tail - yield = 1.94 <input checked="" type="checkbox"/>
Tubing							
Liners							

*JDW
8/23/2022*

TYPE	Size (in)	Wellbore Diameter (in)	Wall Thickness (in)	Burst Pressure (psi)	Anticipated Max. Internal Pressure (psi)	Cement Type	Cement Yield (cu. ft./k)
Conductor	20"	20"	.438				Drilled In
Fresh Water	17.5"	13 3/8"	.380	2730	1200	Type 1, Class A	30% excess yield = 1.20, CTS
Coal							
Intermediate	9 5/8"	12 1/4"	.395	5750		Type 1/Class A	40% excess yield = 0% Excess Lead <input checked="" type="checkbox"/>
Production	5 1/2"	8 1/2"	.415	16240	12500 ✓	Type 1/Class A	20% excess yield = 1.19, tail yield 1.94 <input checked="" type="checkbox"/>
Tubing							
Liners							

PACKERS

Kind:			
Sizes:			
Depths Set:			



19) Describe proposed well work, including the drilling and plugging back of any pilot hole:

Drill the vertical depth to the Marcellus at an estimated total vertical depth of approximately 6964'. Drill horizontal leg to an estimated 20,611' lateral length, 28,259' TMD. Hydraulically fracture, stimulate and be capable of producing from the Marcellus Formation. Should we encounter an unanticipated void in the coal, we will install a minimum of 20' of casing below the void but not more than 100' below the void, set a basket and grout to surface.

20) Describe fracturing/stimulating methods in detail, including anticipated max pressure and max rate:

The stimulation will be completed with multiple stages divided over the lateral length of the well. Stage spacing is dependent upon engineering design. Slickwater fracturing technique will be utilized on each stage using sand, water, and chemicals. See attached list. Maximum pressure not to exceed 12,500 psi.

21) Total Area to be disturbed, including roads, stockpile area, pits, etc., (acres): 51.93 acres

22) Area to be disturbed for well pad only, less access road (acres): 5.00 acres

23) Describe centralizer placement for each casing string:

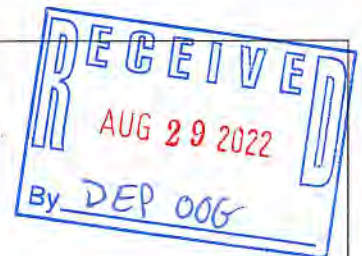
No centralizers will be used with conductor casing.
Freshwater - Bow Spring on every other joint.
Intermediate - Bow Spring on first 2 joints then every third joint to 100' from surface.
Production - Run 1 spiral centralizer every 6 joints from the top of the curve to surface. Run 1 spiral centralizer every 3 joints from the 1st 5' long joint to the top of the curve.

24) Describe all cement additives associated with each cement type:

Conductor - N/A. Casing to be drilled in w/ Dual Rotary Rig.
Fresh Water - *15.9 ppg Class A Neat Gypsum Excess/Yield=1.18 / CTS*
Intermediate - *Lead: 15.4 ppg PNE-1 + 2.5% bwoc CaCl40% Excess / Tail: 15.9 ppg PNE-1 + 2.5% bwoc CaCl zero% Excess. CTS*
Production - *Lead: 14.5 ppg POZ.PNE-1 + 0.3% bwoc R3 + 1% bwoc EG1 + 0.75 gal/sk FP13L + 0.3% bwoc MPA170Tail: 14.8 ppg PNE-1 + 0.35% bwoc R3 + 0.75 gal/sk FP13L + 50% bwoc ASCA1 + 0.5% bwoc MPA17020% Excess/Lead Yield=1.18Tail Yield=1.94CTS*

25) Proposed borehole conditioning procedures:

Conductor - Ensure the hole is clean at TD.
Fresh Water - Once casing is at setting depth, circulate a minimum of one hole volume with Fresh Water prior to pumping cement.
Intermediate - Once casing is at setting depth. Circulate and condition mud at TD. Circulate a minimum of one hole volume prior to pumping cement.
Production - Once on bottom(TD) with casing, circulate at max allowable pump rate for at least 2x bottoms up, or until returns and pump pressures indicate the hole is clean. Circulate a minimum of one hole volume prior to pumping cement.



*Note: Attach additional sheets as needed.



1222 S-3H
Marcellus Shale Horizontal
Lewis County, WV

1222 S-3H SHL 14206335.26N 1725406.3E
1222 S-3H LP 14205949.59N 1725863.2E
1222 S-3H BHL 14186518.79N 1732713.37E

Ground Elevation 1111'
Azimuth 160.58°

WELLSBORE DIAGRAM	HOLE	CASING	GEOLOGY	TOP	BASE	MUD	CEMENT	CENTRALIZERS	CONDITIONING	COMMENTS
	20"	20" 94# LS	Conductor	0	120	AIR	N/A, Casing to be drilled in w/ Dual Rotary Rig	N/A	Ensure the hole is clean at TD.	Surface casing = 0.438" wall thickness
	17.5"	13-3/8" 54.5# J-55 BTC	Coal	636	646	AIR	15.6 ppg Class A Neat 94#/sk 40% Excess Yield=1.18 / CTS	Bow Spring on every other joint	Once casing is at setting depth, Circulate and condition at TD. Circulate a minimum of one hole volume prior to pumping cement.	Intermediate casing = 0.380" wall thickness Burst=2730 psi
	12.25"	9-5/8" 40# N-80 BTC	Little Lime/Big Lime	2057/2136	2065/2166	AIR / KCL Salt Polymer	Lead: 15.4 ppg PNE-1 + 2.5% bwoc CaCl 40% Excess / Tail: 15.9 ppg PNE-1 + 2.5% bwoc CaCl zero% Excess. CTS	Bow Spring on first 2 joints then every third joint to 100' form surface	Once casing is at setting depth, Circulate and condition mud at TD. Circulate a minimum of one hole volume prior to pumping cement.	Intermediate casing = 0.395" wall thickness Burst=5750 psi
			Big Injun/Gantz	2174/2521	2258/2535					
			50 Foot/Gordon	2629/2726	2651/2884					
			Fifth	2977	3021					
			Bayard	3052	3064					
			Warren/Speechley	3359/3564	3383/3593					
			Benson	4967	4989					
	Intermediate	0	TVD: 5116' MD: 5151' Inc. 9 deg.							
	8.75"	5-1/2" 23# P-110 HP CDC HTQ	Alexander	5241	5363	AIR / 9.0ppg SOB M	Lead: 14.5 ppg POZ:PNE-1 + 0.3% bwoc R3 + 1% bwoc EC1 + 0.75 gal/sk FP13L + 0.3% bwoc MPA170 Tail: 14.8 ppg PNE-1 + 0.35% bwoc R3 + 0.75 gal/sk FP13L + 50% bwoc ASCA1 + 0.5% bwoc MPA170 20% Excess Lead Yield=1.19 Tail Yield=1.94 CTS	Run 1 spiral centralizer every 5 joints from the top of the curve to surface.	Once on bottom/TD with casing, circulate at max allowable pump rate for at least 2x bottoms up, or until returns and pump pressures indicate the hole is clean. Circulate a minimum of one hole volume prior to pumping cement.	Production casing = 0.415" wall thickness Burst=16240 psi Note:Actual centralizer schedules may be changed due to hole conditions
	Rhinestreet		6106	6408	11.5ppg-12.5ppg SOB M					
	Cashaqua		6408	6660						
	Middlesex		6660	6727						
	West River		6727	6814						
	Burkett		6814	6850						
	Tully Limestone		6850	6870						
	Hamilton		6870	6890						
	Marcellus		6890	6965						
	TMD / TVD (Production)		28259	6964		11.5ppg-12.5ppg SOB M				
Onondaga	6965	7000								
8.5" Lateral				28259	6964					

LP @ 6964' TVD / 7648' MD

8.5" Hole - Cemented Long String
5-1/2" 23# P-110 HP CDC HTQ

+/-20611' ft Lateral

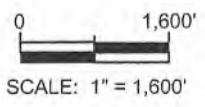
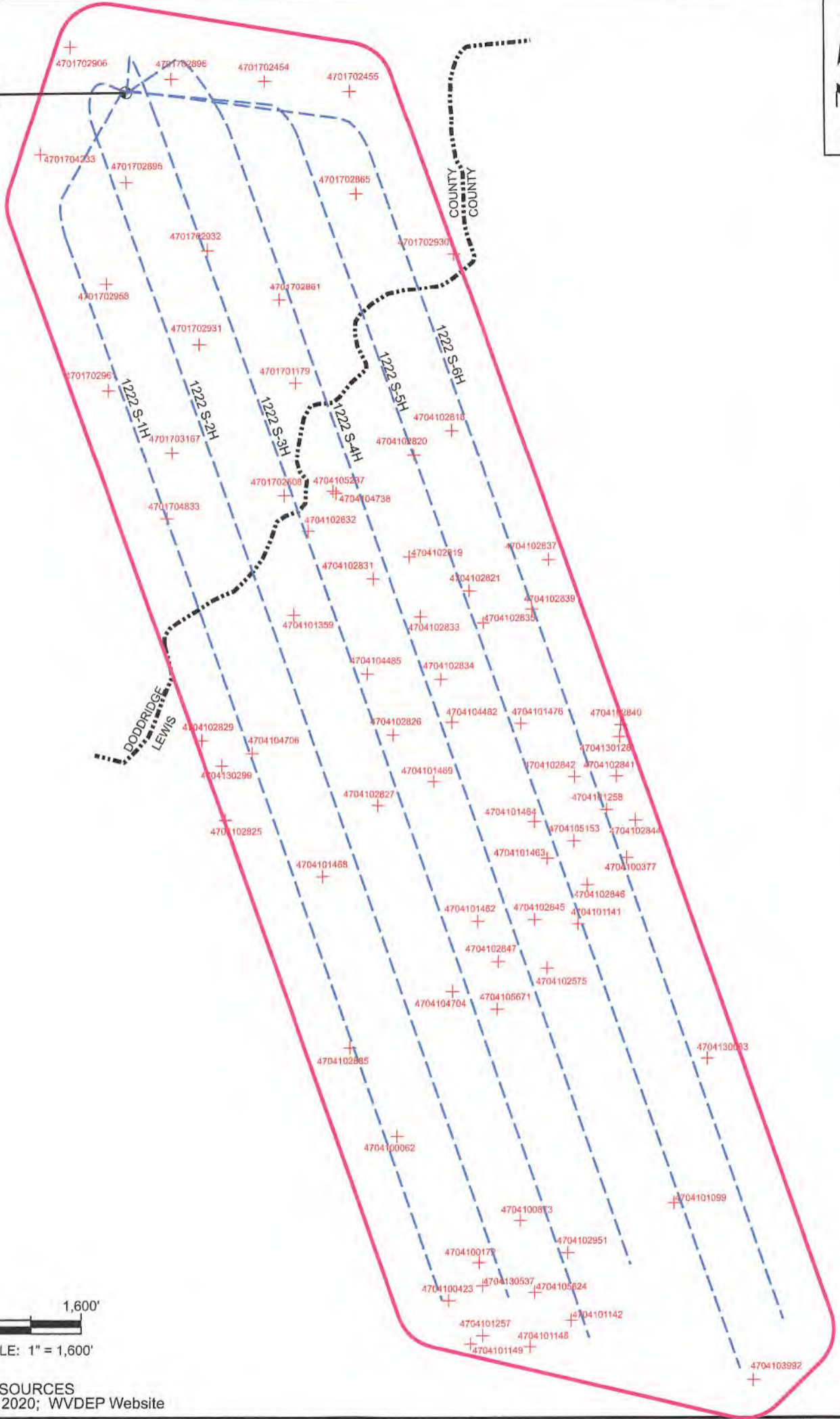
TD @ +/-6964' TVD
+/-28259' MD

X=centralizers

4701706911



SCHMIDT
1222 PAD



DATA SOURCES
WVGES Data Set - 2020; WVDEP Website

Area of Review for:

SCHMIDT 1222 SOUTH UNIT

- Proposed 1222 S-1H Proposed 1222 S-2H Proposed 1222 S-3H
- Proposed 1222 S-4H Proposed 1222 S-5H Proposed 1222 S-6H

Cove District, Doddridge County, W.Va.
Freeman's Creek District, Lewis County, W.Va.

HG ENERGY, II APPALACHIA, LLC
5260 DuPont Road, Parkersburg, WV 26101

09/16/2022



EXISTING WELLS LOCATED WITHIN THE AREA OF REVIEW FOR:

SCHMIDT 1222 SOUTH UNIT AND PROPOSED WELLS S-1H, S-2H, S-3H, S-4H, S-5H, & S-6H

CT	API	COUNTY	FARM	OPERATOR NAME	FORMATION NAME	WELL TYPE	TVD	STATUS	LATITUDE	LONGITUDE
1	4701701179	Doddridge	Leopold Krenn	Eastern Gas Transmission & Storage, Inc.	Gantz	Storage	2446	Active	39.107498	-80.689312
2	4701702454	Doddridge	R B Schmidt	Beta Helix Energy, LLC	Alexander	Gas	5432	Active	39.120148	-80.692619
3	4701702455	Doddridge	R B Schmidt	Ross & Wharton Gas Company, Inc.	Alexander	Gas	5313	Abandoned	39.119657	-80.687846
4	4701702508	Leopold Drenn	Consolidated Gas Supply Corp.	Eastern Gas Transmission & Storage, Inc.	not available	Observation	-	Active	39.101964	-80.691744
5	4701702861	Doddridge	G G & N M Rastle	Beta Helix Energy, LLC	Alexander	Gas	5134	Active	39.110518	-80.691916
6	4701702865	Doddridge	H & T Schmidt	Beta Helix Energy, LLC	Alexander	Gas	5270	Active	39.115147	-80.687557
7	4701702895	Doddridge	Herbert Schmidt	Beta Helix Energy, LLC	Alexander	Gas	5425	Active	39.115774	-80.700444
8	4701702896	Doddridge	H J & T Schmidt	Beta Helix Energy, LLC	Elk	Gas	5981	Active	39.120296	-80.697858
9	4701702906	Doddridge	F A Rebel	Beta Helix Energy, LLC	Alexander	Gas	5600	Active	39.121765	-80.703489
10	4701702930	Doddridge	Glen Rastle	Beta Helix Energy, LLC	Alexander	Gas	5400	Active	39.112484	-80.682112
11	4701702931	Doddridge	Paul Bragg	Beta Helix Energy, LLC	Alexander	Gas	5450	Active	39.108610	-80.696438
12	4701702932	Doddridge	G G & N M Rastle	Beta Helix Energy, LLC	Alexander	Gas	5340	Active	39.112744	-80.695922
13	4701702958	Doddridge	Nevin Stagarwalt	Beta Helix Energy, LLC	Alexander	Gas	5496	Active	39.111340	-80.701597
14	4701702961	Doddridge	Nevin Stagarwalt	Beechlick Oil, Inc.	Big Injun (Grnbr)	Gas	2275	Active	39.106649	-80.701552
15	4701703167	Doddridge	Daniel Persiani	Beta Helix Energy, LLC	Big Injun (Grnbr)	Gas	2280	Active	39.103894	-80.698001
16	4701704233	Doddridge	Wilma Rastle Reed	Greylock OPCO, LLC	Greenland Gap Fm	Gas	5581	Active	39.117050	-80.705231
17	4701704833	Doddridge	Leopold Kreen	Eastern Gas Transmission & Storage, Inc.	UNKNOWN	not available	-	Plugged	39.101015	-80.698314
18	4704100062	Lewis	M H Piercy	Eastern Gas Transmission & Storage, Inc.	Big Injun (Grnbr)	Gas	2161	Plugged	39.074007	-80.685584
19	4704100172	Lewis	Eliza Starcher	R & R Oil & Gas, LLC	Big Injun (Grnbr)	Oil w/ Gas Show	1987	Abandoned	39.068486	-80.680998
20	4704100377	Lewis	Andrew T Gooden	UNKNOWN	Up Devonian	Storage	2360	Plugged	39.086078	-80.672628
21	4704100423	Lewis	L B Starcher	R & R Oil & Gas, LLC	Price Fm & equivs	Oil w/ Gas Show	1960	Abandoned	39.066834	-80.682720
22	4704100873	Lewis	W W Starcher	R & R Oil & Gas, LLC	Greenland Gap Fm	Oil and Gas	3712	Abandoned	39.070307	-80.678677
23	4704101099	Lewis	R G King	Eastern Gas Transmission & Storage, Inc.	Up Devonian	Oil and Gas	2402	Active	39.071037	-80.670053
24	4704101141	Lewis	Andrew Gooden	Eastern Gas Transmission & Storage, Inc.	Gantz	Storage	2486	Plugged	39.083206	-80.675381
25	4704101142	Lewis	Smith & Stout	Eastern Gas Transmission & Storage, Inc.	Price Fm & equivs	Gas	2174	Active	39.065935	-80.675857
26	4704101258	Lewis	G E Lowther	Eastern Gas Transmission & Storage, Inc.	Up Devonian	Dry w/ Gas Show	2640	Plugged	39.088153	-80.673772
27	4704101359	Lewis	T M Bone	Eastern Gas Transmission & Storage, Inc.	Gantz	Storage	2583	Active	39.096765	-80.691240
28	4704101462	Lewis	Eddie & Donald Ross	Eastern Gas Transmission & Storage, Inc.	Gantz	Storage	2360	Plugged	39.083358	-80.681011
29	4704101463	Lewis	Eddie & Donald Ross	Eastern Gas Transmission & Storage, Inc.	Gantz	Storage	2362	Plugged	39.086078	-80.677094
30	4704101464	Lewis	E E Jones	Eastern Gas Transmission & Storage, Inc.	Gantz	Storage	2490	Active	39.087674	-80.677822

4701706911

31	4704101468	Lewis	O Means	Eastern Gas Transmission & Storage, Inc.	Gantz	Storage	2360	Active	39.085354	-80.689689
32	4704101469	Lewis	C Shaner	Eastern Gas Transmission & Storage, Inc.	Gantz	Storage	2650	Active	39.089460	-80.683447
33	4704101476	Lewis	J W Lowther	Eastern Gas Transmission & Storage, Inc.	Gordon (undiff)	Storage	2898	Active	39.091943	-80.678558
34	4704102575	Lewis	Wm M McCutcheon	Eastern Gas Transmission & Storage, Inc.	UNKNOWN	Observation	-	Active	39.081279	-80.677143
35	4704102818	Lewis	John M Keely et al	Eastern Gas Transmission & Storage, Inc.	UNKNOWN	not available	-	Plugged	39.104761	-80.682312
36	4704102819	Lewis	John Kenney	Eastern Gas Transmission & Storage, Inc.	UDev undf:Ber/LoHURN	Oil	2302	Plugged	39.099275	-80.684727
37	4704102820	Lewis	John M Keely et al	Eastern Gas Transmission & Storage, Inc.	UNKNOWN	Storage	-	Plugged	39.103699	-80.684441
38	4704102821	Lewis	John Kenney	Eastern Gas Transmission & Storage, Inc.	UNKNOWN	Storage	-	Active	39.097761	-80.681400
39	4704102825	Lewis	Yvone Rastle et al	Eastern Gas Transmission & Storage, Inc.	UNKNOWN	not available	-	Plugged	39.087818	-80.695145
40	4704102826	Lewis	Charles Shaner	Eastern Gas Transmission & Storage, Inc.	UNKNOWN	Observation	-	Active	39.091490	-80.685718
41	4704102827	Lewis	Kermit Moneypenny	Eastern Gas Transmission & Storage, Inc.	Gantz	Gas	2468	Plugged	39.088413	-80.686598
42	4704102829	Lewis	Claude E & Barbara L Moorfield	Eastern Gas Transmission & Storage, Inc.	UNKNOWN	not available	-	Plugged	39.091299	-80.696449
43	4704102831	Lewis	T M Bode	Eastern Gas Transmission & Storage, Inc.	UNKNOWN	not available	-	Plugged	39.098305	-80.686780
44	4704102832	Lewis	T M Bode	Eastern Gas Transmission & Storage, Inc.	Gantz	Storage	2507	Plugged	39.100414	-80.690391
45	4704102833	Lewis	Leopold Statler	Eastern Gas Transmission & Storage, Inc.	Hampshire Grp	Oil	2308	Plugged	39.096663	-80.684145
46	4704102834	Lewis	Leopold Statler	Eastern Gas Transmission & Storage, Inc.	UNKNOWN	Storage	-	Active	39.093904	-80.683026
47	4704102835	Lewis	Leopold Statler	Eastern Gas Transmission & Storage, Inc.	Gantz	Storage	2415	Plugged	39.096354	-80.680631
48	4704102837	Lewis	Joseph Krenn	Eastern Gas Transmission & Storage, Inc.	UNKNOWN	Storage	-	Active	39.099071	-80.676947
49	4704102839	Lewis	Jim C Hamer Company	Eastern Gas Transmission & Storage, Inc.	UNKNOWN	not available	2392	Plugged	39.096939	-80.677901
50	4704102840	Lewis	Mahala Lowther	Eastern Gas Transmission & Storage, Inc.	UNKNOWN	Observation	2468	Active	39.091836	-80.672945
51	4704102841	Lewis	J R Lowther	Eastern Gas Transmission & Storage, Inc.	Hampshire Grp	Oil	2477	Plugged	39.089624	-80.673197
52	4704102842	Lewis	J R Lowther	Eastern Gas Transmission & Storage, Inc.	Hampshire Grp	Storage	2410	Plugged	39.089616	-80.675567
53	4704102844	Lewis	Wdward/Lois Howlin	Eastern Gas Transmission & Storage, Inc.	UNKNOWN	Storage	-	Active	39.087690	-80.672160
54	4704102845	Lewis	A T Gooden	Eastern Gas Transmission & Storage, Inc.	Berea	Observation	2190	Active	39.083398	-80.677842
55	4704102846	Lewis	A T Gooden	Eastern Gas Transmission & Storage, Inc.	Hampshire Grp	Oil	2385	Plugged	39.084918	-80.674861
56	4704102847	Lewis	A T Gooden	Eastern Gas Transmission & Storage, Inc.	UNKNOWN	Observation	-	Active	39.081580	-80.679873
57	4704102885	Lewis	Dollie Means	Eastern Gas Transmission & Storage, Inc.	UNKNOWN	Observation	2445	Active	39.077844	-80.688202
58	4704102951	Lewis	Smith & Chapman	Eastern Gas Transmission & Storage, Inc.	Big Injun (Grnbr)	Oil and Gas	2318	Active	39.068889	-80.676033
59	4704103992	Lewis	Joseph Turner	Ross & Wharton Gas Company, Inc.	Greenland Gap Fm	Gas	3854	Abandoned	39.063282	-80.665644
60	4704104482	Lewis	Margaret Hamberry	Eastern Gas Transmission & Storage, Inc.	Hampshire Grp	Storage	2316	Plugged	39.092023	-80.682417
61	4704104485	Lewis	Dolores Hinterer	Eastern Gas Transmission & Storage, Inc.	UNKNOWN	not available	-	Plugged	39.094175	-80.687135
62	4704104704	Lewis	William Dawson Means et al	Eastern Gas Transmission & Storage, Inc.	UNKNOWN	not available	-	Plugged	39.080291	-80.682449
63	4704104706	Lewis	C. Rastle	Eastern Gas Transmission & Storage, Inc.	Gantz	not available	2191	Plugged	39.090723	-80.693625

64	4704104738	Lewis	John Keely	Eastern Gas Transmission & Storage, Inc.	Gantz	Oil	2494	Plugged	39.102030	-80.688823
65	4704105153	Lewis	Michael D & Cheryl K Casey	Eastern Gas Transmission & Storage, Inc.	UNKNOWN	not available	-	Plugged	39.086813	-80.675608
66	4704105237	Lewis	John M Keely et al	Eastern Gas Transmission & Storage, Inc.	UNKNOWN	not available	-	Plugged	39.102132	-80.688994
67	4704105624	Lewis	David King	R & R Oil & Gas, LLC	Balltown	Gas	3900	Abandoned	39.067171	-80.677898
68	4704105671	Lewis	William Dawson Meeans et al	Eastern Gas Transmission & Storage, Inc.	UNKNOWN	not available	-	Plugged	39.079510	-80.679944
69	4704130083	Lewis	J W Osbourn et al	Hope Natural Gas Company	UNKNOWN	not available	2095	Plugged	39.077332	-80.668162
70	4704130299	Lewis	Conrad Rastle	Hope Natural Gas Company	Hampshire Grp	Gas	2191	Plugged	39.090184	-80.695332
71	4704130537	Lewis	Eliza Starcher	Kiger, Fred	Undf PRICE blw INJN	Oil and Gas	1993	Plugged	39.067471	-80.680812
WELLS ADDED 9/1/2022										
72	4704101148	Lewis	C Snaith	UNKNOWN	Big Injun (Grnbr)	Oil and Gas	2205	Plugged	39.064813	80.678151
73	4704101149	Lewis	Nellie G Douglass	Eastern Gas Transmission & Storage, Inc.	Undf PRICE blw INJN	Oil and Gas	1979	Plugged	39.064945	80.681498
74	4704101257	Lewis	N G Douglas	UNKNOWN	Undf PRICE blw INJN	Oil and Gas	1987	Plugged	39.065295	80.680811

SOURCE: WVGES DATASET (2020) and WVDEP WEBSITE AND FIELD SURVEYS

YELLOW DENOTES WELL WITH TVD > 4,500'

GREEN DENOTES SURVEYED WELLS

UPDATED 9/1//2022

9,599' to Top Hole

2,365' to Bottom Hole

Page 1 of 3

HG Energy II Appalachia, LLC
Well No. Schmidt 1222 S-3H MOD

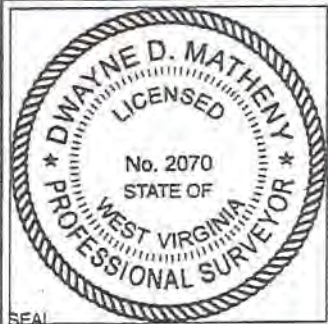
TOP LATITUDE 39 - 07 - 30
BTM LATITUDE 39 - 05 - 00

TOP LONGITUDE 80 - 40 - 00
BTM LONGITUDE 80 - 40 - 00

6,644' to Bottom Hole

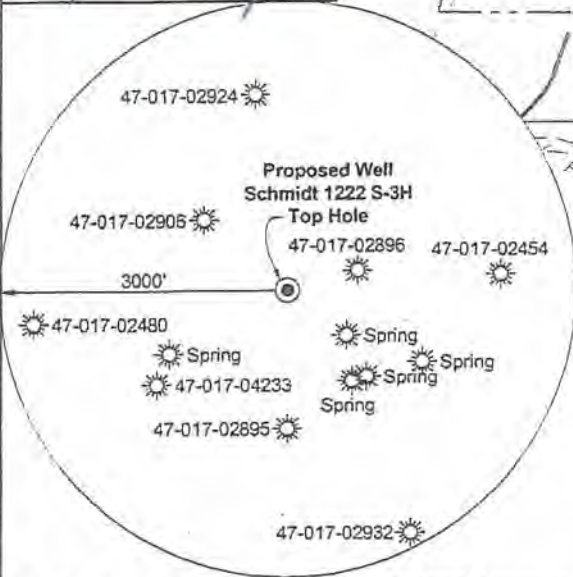
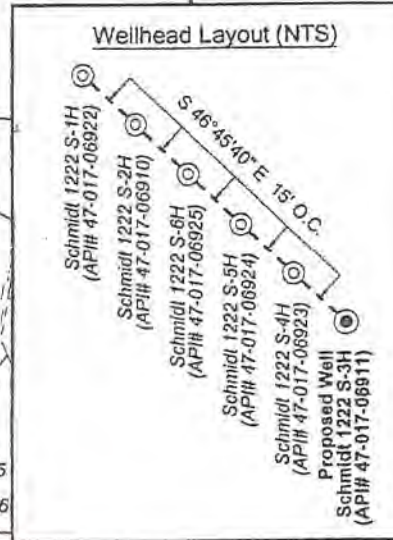
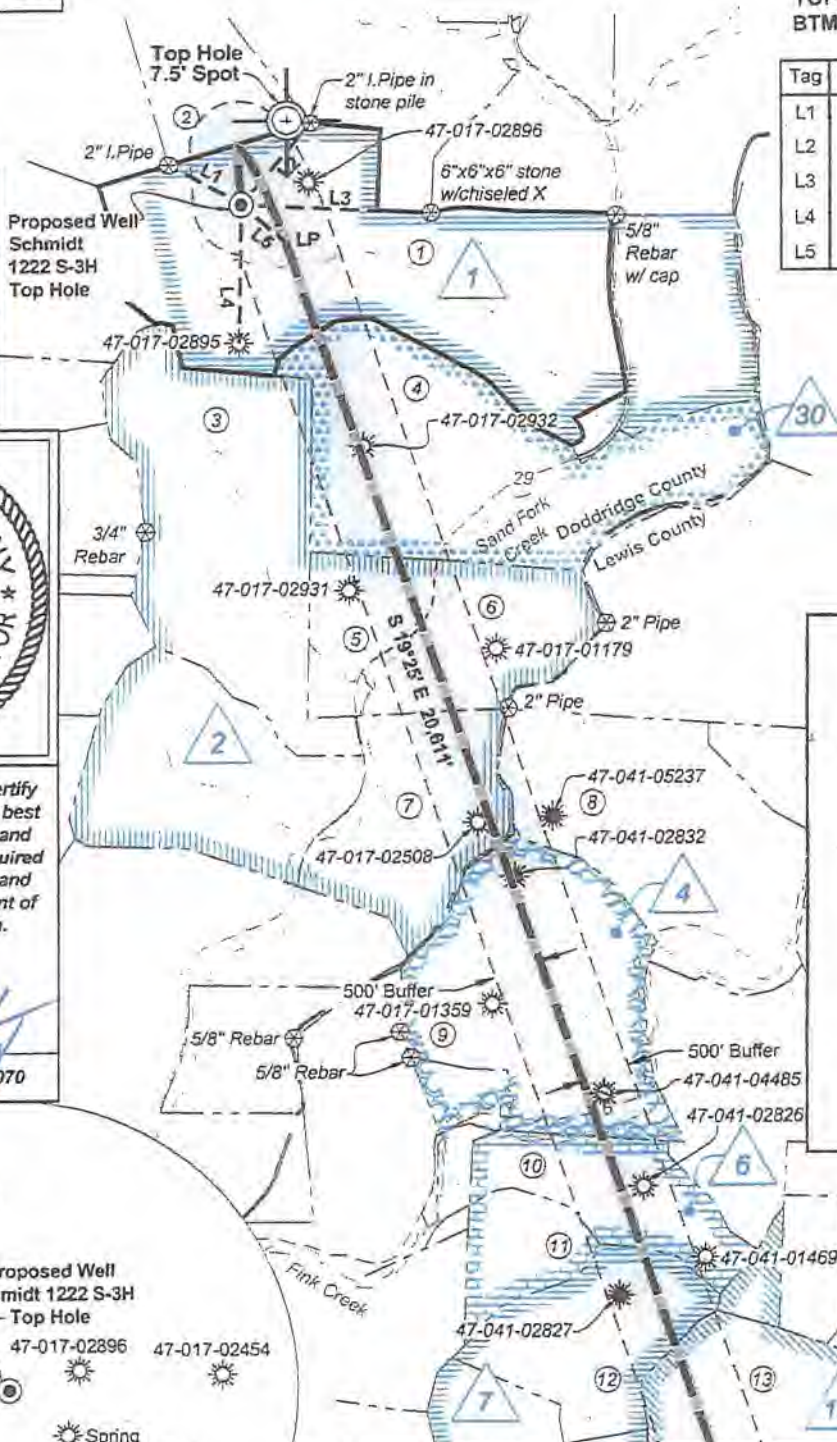
1,972' to Top Hole

Tag	Bearing	Dist.
L1	S 60°52' E	861.2'
L2	S 40°16' W	1,118.4'
L3	N 87°21' W	1,975.8'
L4	N 01°04' E	1,419.7'
L5	S 49°50' E	597.9'



I, the undersigned, hereby certify that this plat is correct to the best of my knowledge and belief and shows all the information required by law and the rules issued and prescribed by the Department of Environmental Protection.

Dwayne D. Matheny
Dwayne D. Matheny, P.S. 2070



Note: 0 water wells & 5 springs was found within 1500' of proposed well. No occupied dwellings or buildings 2,500 square feet or larger used to house or shelter dairy cattle or poultry husbandry are located within 625' of the center of the well pad.

MATCHLINE Sheet 2

Notes:
Well No. Schmidt 1222 S-3H
UTM NAD 1983 (USSF)
Top Hole Coordinates
N: 14,206,335.26'
E: 1,725,406.30'
Landing Point Coordinates
N: 14,205,949.59'
E: 1,725,863.20'
Bottom Hole Coordinates
N: 14,186,518.79'
E: 1,732,713.37'

Notes: Well No. Schmidt 1222 S-3H
West Virginia Coordinate System of 1927, North Zone
based upon Differential GPS Measurements.
Top Hole coordinates: Bottom Hole coordinates
Latitude: 39°07'10.50" Latitude: 39°03'54.31"
Longitude: 80°42'01.84" Longitude: 80°40'30.00"
UTM Zone 17, NAD 1983
Top Hole Coordinates Bottom Hole Coordinates
N: 4,330,099.647m N: 4,324,059.575m
E: 525,904.892m E: 526,132.091m
Plat orientation and corner and well references are based upon the grid north meridian. Well location references are based upon the magnetic meridian.

FILE NO: 156-12-FC-21
DRAWING NO: Schmidt 1222 S-3H Well Plat
SCALE: 1" = 2000'
MINIMUM DEGREE OF ACCURACY: Submeter
PROVEN SOURCE OF ELEVATION: CORS, Bridgeport, WV

STATE OF WEST VIRGINIA
DEPARTMENT OF ENVIRONMENTAL PROTECTION
OIL AND GAS DIVISION

DATE: September 2 2022
OPERATOR'S WELL NO. Schmidt 1222 S-3H
API WELL NO MOD
47 - 017 - 06911
STATE COUNTY PERMIT

WELL TYPE: OIL GAS LIQUID INJECTION WASTE DISPOSAL
(IF GAS) PRODUCTION: STORAGE DEEP SHALLOW

LOCATION: ELEVATION: 1,111' WATERSHED: Sand Fork of Fink Creek
DISTRICT: Cove/Freemans Creek
SURFACE OWNER: John A. Schmidt
ROYALTY OWNER: Frona M. Schmidt, et ux, et al LEASE NO: ACREAGE: 237.07
PROPOSED WORK: DRILL CONVERT DRILL DEEPER FRACTURE OR STIMULATE PLUG OFF OLD FORMATION
 PERFORATE NEW FORMATION OTHER PHYSICAL CHANGE IN WELL (SPECIFY) LP & BH - MOD 6,964' TVD
 PLUG AND ABANDON CLEAN OUT AND REPLUG TARGET FORMATION: Marcellus Shale ESTIMATED DEPTH: 28,259' MD

WELL OPERATOR: HG Energy II Appalachia, LLC DESIGNATED AGENT: Diane C. White
ADDRESS: 5260 Dupont Road ADDRESS: 5260 Dupont Road
Parkersburg, WV 26101 Parkersburg, WV 26101

PROPOSED WORK: DRILL CONVERT DRILL DEEPER FRACTURE OR STIMULATE PLUG OFF OLD FORMATION
 PERFORATE NEW FORMATION OTHER PHYSICAL CHANGE IN WELL (SPECIFY) LP & BH - MOD 6,964' TVD

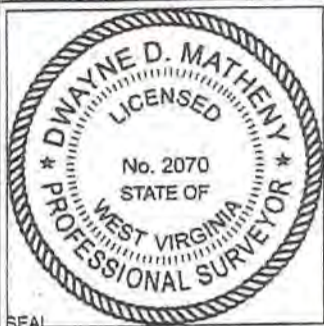
TOP LATITUDE 39 - 07 - 30
BTM LATITUDE 39 - 05 - 00

Tag	Bearing	Dist.
L1	S 60°52' E	861.2'
L2	S 40°16' W	1,118.4'
L3	N 87°21' W	1,975.8'
L4	N 01°04' E	1,419.7'
L5	S 49°50' E	597.9'

TOP LONGITUDE 80 - 40 - 00
BTM LONGITUDE 80 - 40 - 00

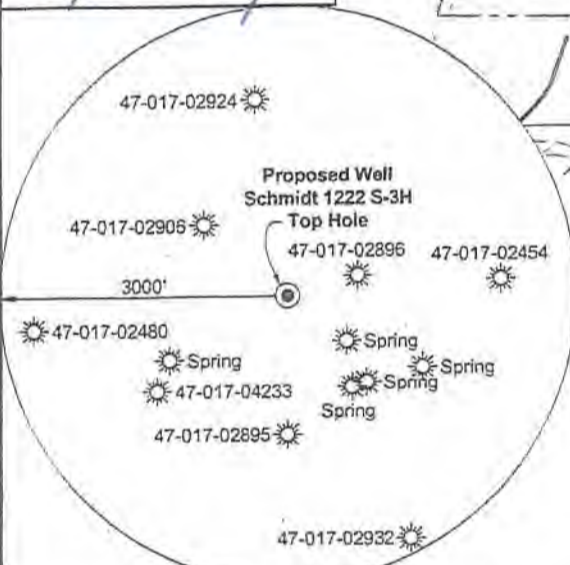
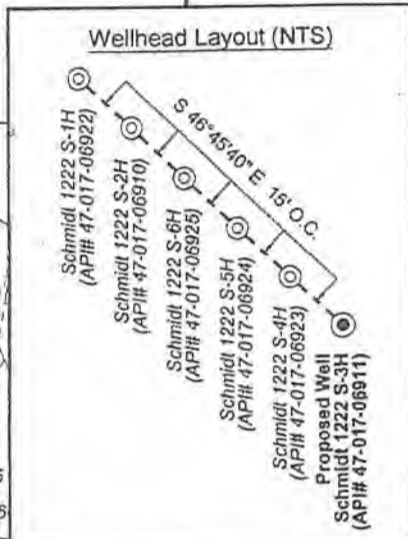
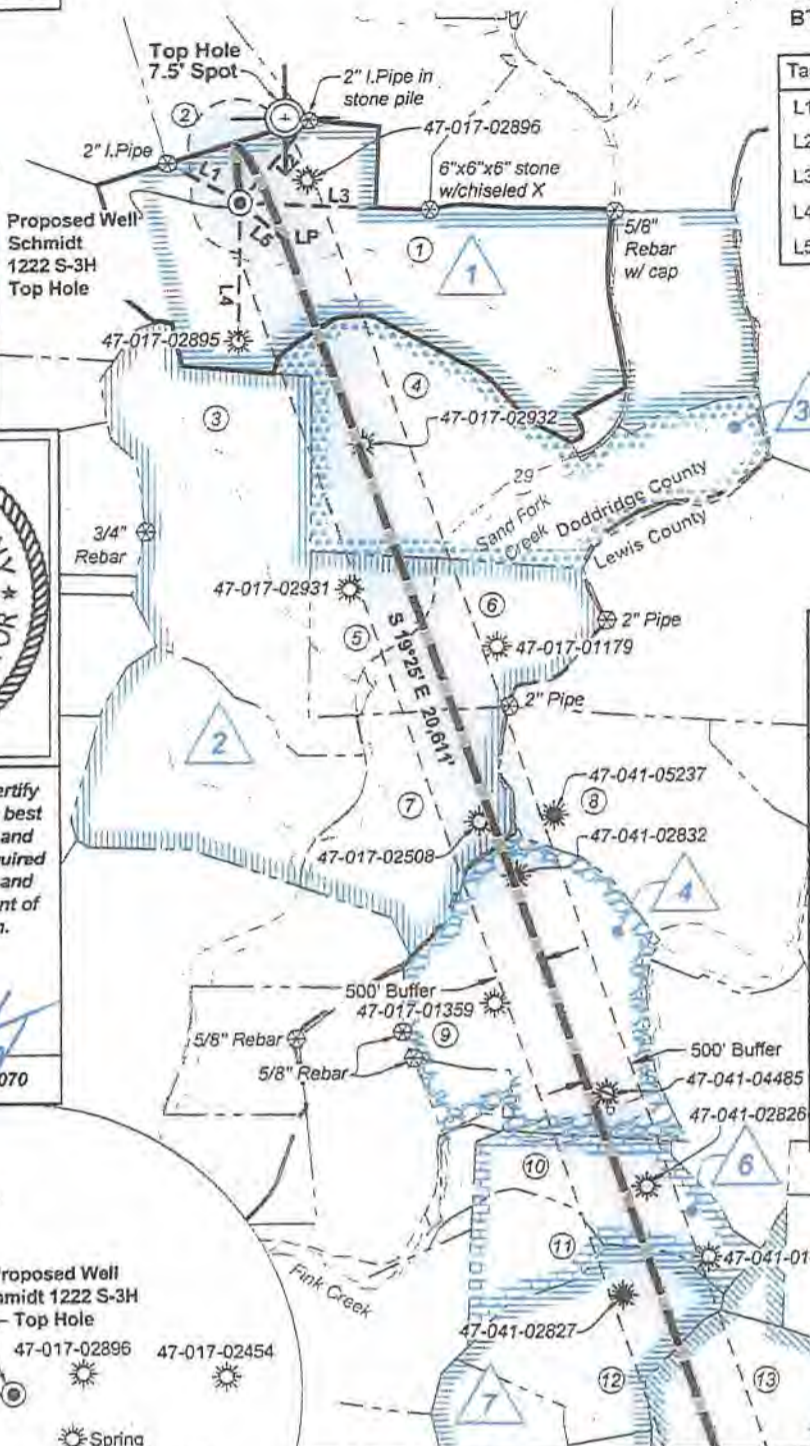
6,644' to Bottom Hole

1,972' to Top Hole



I, the undersigned, hereby certify that this plat is correct to the best of my knowledge and belief and shows all the information required by law and the rules issued and prescribed by the Department of Environmental Protection.

Dwayne D. Matheny
Dwayne D. Matheny, P.S. 2070



Note: 0 water wells & 5 springs was found within 1500' of proposed well. No occupied dwellings or buildings 2,500 square feet or larger used to house or shelter dairy cattle or poultry husbandry are located within 625' of the center of the well pad.

Notes:
Well No. Schmidt 1222 S-3H
UTM NAD 1983 (USSF)
Top Hole Coordinates
N: 14,206,335.26'
E: 1,725,406.30'
Landing Point Coordinates
N: 14,205,949.59'
E: 1,725,863.20'
Bottom Hole Coordinates
N: 14,186,518.79'
E: 1,732,713.37'

Notes: Well No. Schmidt 1222 S-3H
West Virginia Coordinate System of 1927, North Zone
based upon Differential GPS Measurements.
Top Hole coordinates Latitude: 39°07'10.50" Longitude: 80°42'01.84"
Bottom Hole coordinates Latitude: 39°03'54.31" Longitude: 80°40'30.00"
UTM Zone 17, NAD 1983
Top Hole Coordinates N: 4,330,099.647m E: 525,904.892m
Bottom Hole Coordinates N: 4,324,059.575m E: 528,132.091m
Plat orientation and corner and well references are based upon the grid north meridian. Well location references are based upon the magnetic meridian.

FILE NO: 156-12-FC-21
DRAWING NO: Schmidt 1222 S-3H Well Plat
SCALE: 1" = 2000'
MINIMUM DEGREE OF ACCURACY: Submeter
PROVEN SOURCE OF ELEVATION: CORS, Bridgeport, WV

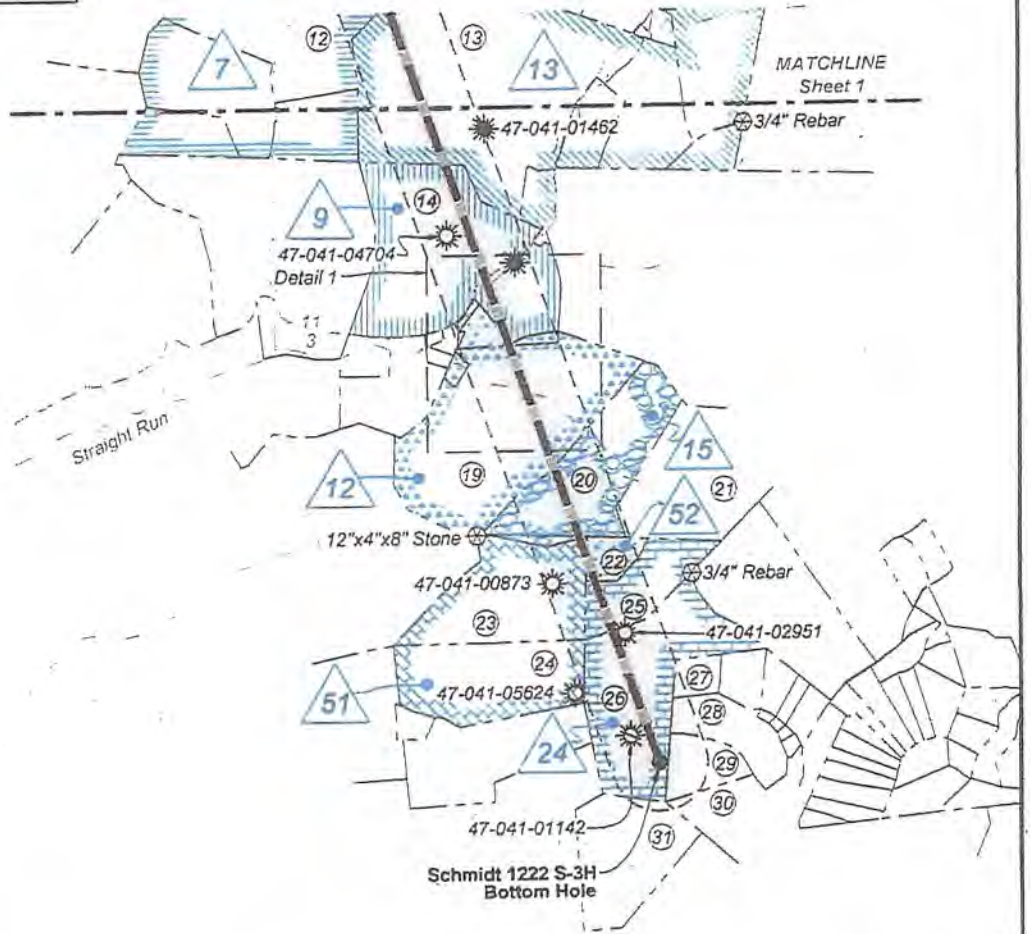
STATE OF WEST VIRGINIA
DEPARTMENT OF ENVIRONMENTAL PROTECTION
OIL AND GAS DIVISION

DATE: September 2 2022
OPERATOR'S WELL NO. Schmidt 1222 S-3H
API WELL NO MOD
47 - 017 - 06911
STATE COUNTY PERMIT

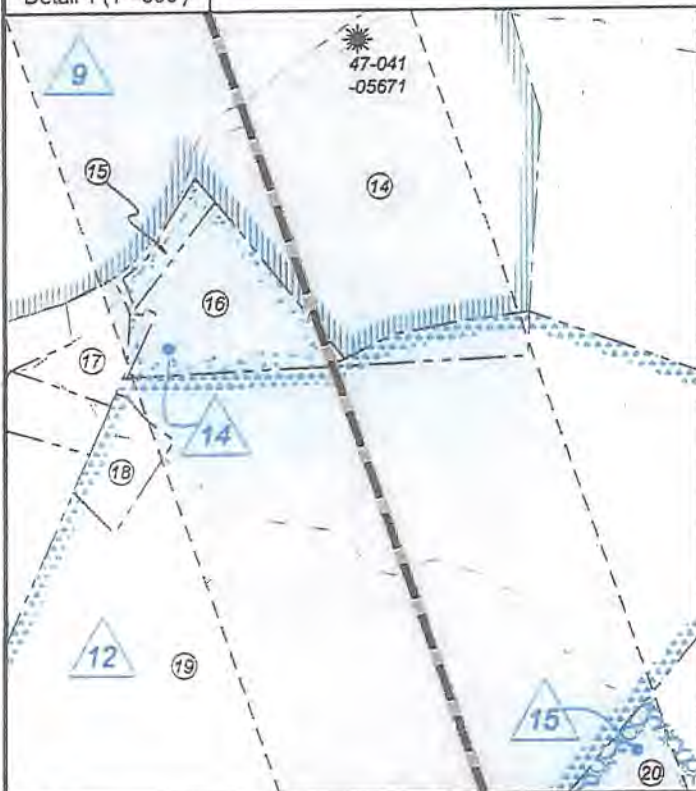
WELL TYPE: OIL GAS LIQUID INJECTION WASTE DISPOSAL
(IF GAS) PRODUCTION: STORAGE DEEP SHALLOW

LOCATION: ELEVATION: 1,111' WATERSHED: Sand Fork of Fink Creek
DISTRICT: Cove/Freemans Creek
SURFACE OWNER: John A. Schmidt
ROYALTY OWNER: Frona M. Schmidt, et ux, et al LEASE NO: ACREAGE: 289.00
PROPOSED WORK: DRILL CONVERT DRILL DEEPER FRACTURE OR STIMULATE PLUG OFF OLD FORMATION
 PERFORATE NEW FORMATION OTHER PHYSICAL CHANGE IN WELL (SPECIFY) LP & BH - MOD 6,964' TVD
 PLUG AND ABANDON CLEAN OUT AND REPLUG TARGET FORMATION: Marcellus Shale ESTIMATED DEPTH: 28,259' MD

WELL OPERATOR: HG Energy II Appalachia, LLC DESIGNATED AGENT: Diane C. White
ADDRESS: 5260 Dupont Road ADDRESS: 5260 Dupont Road
Parkersburg, WV 26101 Parkersburg, WV 26101



Detail 1 (1"=500')



Well Location References Not to Scale	
Schmidt 1222 Pad	5/8" rebar w/yellow plastic cap
Proposed Well Schmidt 1222 S-3H	5/8" rebar w/yellow plastic cap
	AZ177° 294'
	AZ109° 287'

Legend	
	Proposed gas well
	Well Reference, as noted
	Monument, as noted
	Existing Well, as noted
	Existing Plugged Well, as noted
	Digitized Well, as noted
	Creek or Drain
	Existing Road
	Surface boundary (approx.)
	Adjoiner surface tracts (approx.)
	County Line (approx.)

FILE NO: 156-12-FC-21
DRAWING NO: Schmidt 1222 S-3H Well Plat
SCALE: 1" = 2000'
MINIMUM DEGREE OF ACCURACY:
Submeter
PROVEN SOURCE OF ELEVATION:
CORS, Bridgeport, WV

STATE OF WEST VIRGINIA
DEPARTMENT OF ENVIRONMENTAL PROTECTION
OIL AND GAS DIVISION

DATE: September 2 2022
OPERATOR'S WELL NO. Schmidt 1222 S-3H
API WELL NO ~~1609~~
47 - 017 - 06911
STATE COUNTY PERMIT

WELL TYPE: OIL GAS LIQUID INJECTION WASTE DISPOSAL
(IF GAS) PRODUCTION: STORAGE DEEP SHALLOW

LOCATION: ELEVATION: 1,111' WATERSHED: Sand Fork of Fink Creek
DISTRICT: Cove/Freemans Creek
SURFACE OWNER: John A. Schmidt

QUADRANGLE: Vadis
COUNTY: Doddridge/Lewis
ACREAGE: 09/16/2022

ROYALTY OWNER: Frona M. Schmidt, et ux, et al LEASE NO: ACREAGE: 289.00
PROPOSED WORK: DRILL CONVERT DRILL DEEPER FRACTURE OR STIMULATE PLUG OFF OLD FORMATION
 PERFORATE NEW FORMATION OTHER PHYSICAL CHANGE IN WELL (SPECIFY) LP & BH - MOD 6,964' TVD
 PLUG AND ABANDON CLEAN OUT AND REPLUG TARGET FORMATION: Marcellus Shale ESTIMATED DEPTH: 28,259' MD

WELL OPERATOR: HG Energy II Appalachia, LLC DESIGNATED AGENT: Diane C. White
ADDRESS: 5260 Dupont Road ADDRESS: 5260 Dupont Road
Parkersburg, WV 26101 Parkersburg, WV 26101



Doddridge Co. - Cove Dist.				
No.	TM / Par	Owner	Bk / Pg	Ac.
1	10 / 18.1	John A. Schmidt	281 / 622	237.07
2	10 / 2.3	Daniel L. & Yvette L. King	336 / 355	44.41
3	14 / 2	Georganna & Henry Miller, Jr.	333 / 202	153.55
4	10 / 19	Marilyn Barns & Carolyn Bass	W28 / 52	175.00
5	14 / 2.4	Marguerite Dombroski	W33 / 526	38.43
6	14 / 2.3	John W. & Jennie Lacy	216 / 509	63.04
7	14 / 2.1	Lois Hluhan	262 / 583	80.60
Lewis Co. - Freemans Creek Dist.				
No.	TM / Par	Owner	Bk / Pg	Ac.
8	2D / 1	Dennis P. Keely, et al	716 / 520	132.50
9	1D / 12	Dolores Hinterer	WB Y / 218	138.19
10	2D / 6	Margaret Hamberry Estate	Appr 533 / 46	57.25
11	1D / 11.2	James Byer, Jr.	603 / 60	30.03
12	2D / 8	Dawn C. Lozina, et al	726 / 836	63.95
13	2D / 13	Sharon & Francis L. Hartlaub, Jr.	639 / 89	104.34
14	2E / 2	Brenda J. Parks Lydon, et al	747 / 656	67.61
15	2E / 7	James R. & Kathy A. Ireland	612 / 38	1.00
16	2E / 5	James R. & Kathy A. Ireland	612 / 38	2.75
17	2E / 8	James G. Ireland	639 / 493	1.15
18	2E / 11	James G. Ireland	639 / 493	1.00
19	2E / 12	Fred J. Rinker, et al	609 / 481	71.25
20	2E / 37	Frank & Lillie Swisher	637 / 691	33.00
21	2E / 13	Richard B. Toothman, Jr.	760 / 608	36.75
22	2E / 14	Richard B. Toothman, Jr.	760 / 608	5.00
23	2E / 16	David N. & Rebecca King	638 / 776	35.05
24	2E / 18	David N. & Rebecca King	638 / 776	32.00
25	2E / 15	Frank & Lillie Swisher	637 / 691	18.75
26	2E / 30	Frank & Lillie Swisher	637 / 691	38.00
27	2E / 29.22	Richard B. Toothman, Jr.	760 / 608	4.32
28	2E / 29.10	Richard B. Toothman, Jr.	760 / 608	13.56
29	2E / 29.9	Richard B. Toothman, Jr.	760 / 608	9.53
30	2E / 29.8	G. Randy & Belua Cunningham	498 / 588	6.89
31	2E / 26	Richard B. Toothman, Jr.	760 / 608	26.50

ID	Lease
1	Frona M. Schmidt, et vtr
2	Leopold Krann, et ux
4	Theresia M. Bode, et ux
6	HG Energy II Appalachia, LLC
7	HG Energy II Appalachia, LLC
9	W.E. Means, et ux
12	C.E. Lattea, et al
13	A.T. Gooden, et ux
14	Blanch Stepp, et al
15	J.M. West, et al
24	Ursula & A.L. Smith, et al
30	Glenn G. Rastle, et al
51	David N. King, et al
52	Edna Loraine Harris

FILE NO: 156-12-FC-21
DRAWING NO: Schmidt 1222 S-3H Well Plat
SCALE: 1" = 2000'
MINIMUM DEGREE OF ACCURACY:
Submeter
PROVEN SOURCE OF ELEVATION:
CORS, Bridgeport, WV

STATE OF WEST VIRGINIA
DEPARTMENT OF ENVIRONMENTAL PROTECTION
OIL AND GAS DIVISION

DATE: September 2 2022
OPERATOR'S WELL NO. Schmidt 1222 S-3H
API WELL NO 4005
47 - 017 - 06911
STATE COUNTY PERMIT

WELL TYPE: OIL GAS LIQUID INJECTION WASTE DISPOSAL
(IF GAS) PRODUCTION: STORAGE DEEP SHALLOW

LOCATION: ELEVATION: 1,111' WATERSHED: Sand Fork of Fink Creek QUADRANGLE: Vadis
DISTRICT: Cove/Freemans Creek COUNTY: Doddridge/Lewis
SURFACE OWNER: John A. Schmidt ACREAGE: 237.07
ROYALTY OWNER: Frona M. Schmidt, et ux, et al LEASE NO: ACREAGE: 289.00

PROPOSED WORK: DRILL CONVERT DRILL DEEPER FRACTURE OR STIMULATE PLUG OFF OLD FORMATION
 PERFORATE NEW FORMATION OTHER PHYSICAL CHANGE IN WELL (SPECIFY) LP & BH - MOD 6,964' TVD
 PLUG AND ABANDON CLEAN OUT AND REPLUG TARGET FORMATION: Marcellus Shale ESTIMATED DEPTH: 28,259' MD

WELL OPERATOR: HG Energy II Appalachia, LLC DESIGNATED AGENT: Diane C. White
ADDRESS: 5260 Dupont Road ADDRESS: 5260 Dupont Road
Parkersburg, WV 26101 Parkersburg, WV 26101

HG Energy II Appalachia, LLC
Well No. Schmidt 1222 S-3H MOD

9,599' to Top Hole

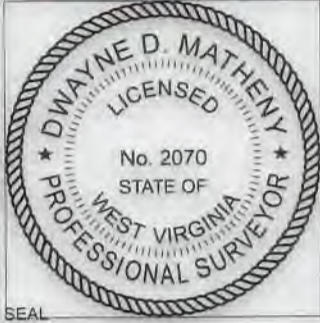
2,365' to Bottom Hole

TOP LATITUDE 39 - 07 - 30
BTM LATITUDE 39 - 05 - 00

TOP LONGITUDE 80 - 40 - 00
BTM LONGITUDE 80 - 40 - 00

6,644' to Bottom Hole

1,972' to Top Hole



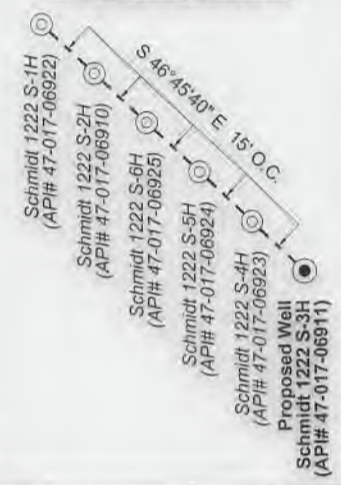
I, the undersigned, hereby certify that this plat is correct to the best of my knowledge and belief and shows all the information required by law and the rules issued and prescribed by the Department of Environmental Protection.

Dwayne D. Matheny
Dwayne D. Matheny, P.S. 2070



Tag	Bearing	Dist.
L1	S 60°52' E	861.2'
L2	S 40°16' W	1,118.4'
L3	N 87°21' W	1,975.8'
L4	N 01°04' E	1,419.7'
L5	S 49°50' E	597.9'

Wellhead Layout (NTS)



Note: 0 water wells & 5 springs was found within 1500' of proposed well. No occupied dwellings or buildings 2,500 square feet or larger used to house or shelter dairy cattle or poultry husbandry are located within 625' of the center of the well pad.

MATCHLINE
Sheet 2

Notes:
Well No. Schmidt 1222 S-3H
UTM NAD 1983 (USSF)
Top Hole Coordinates
N: 14,206,335.26'
E: 1,725,406.30'
Landing Point Coordinates
N: 14,205,949.59'
E: 1,725,863.20'
Bottom Hole Coordinates
N: 14,186,518.79'
E: 1,732,713.37'

Notes: Well No. Schmidt 1222 S-3H
West Virginia Coordinate System of 1927, North Zone
based upon Differential GPS Measurements.
Top Hole coordinates Bottom Hole coordinates
Latitude: 39°07'10.50" Latitude: 39°03'54.31"
Longitude: 80°42'01.84" Longitude: 80°40'30.00"
UTM Zone 17, NAD 1983
Top Hole Coordinates Bottom Hole Coordinates
N: 4,330,099.647m N: 4,324,059.575m
E: 525,904.892m E: 528,132.091m
Plat orientation and corner and well references are based upon the grid north meridian. Well location references are based upon the magnetic meridian.

FILE NO: 156-12-FC-21
DRAWING NO: Schmidt 1222 S-3H Well Plat
SCALE: 1" = 2000'
MINIMUM DEGREE OF ACCURACY: Submeter
PROVEN SOURCE OF ELEVATION: CORS, Bridgeport, WV

STATE OF WEST VIRGINIA
DEPARTMENT OF ENVIRONMENTAL PROTECTION
OIL AND GAS DIVISION

DATE: September 2 2022
OPERATOR'S WELL NO. Schmidt 1222 S-3H
API WELL NO MOD
47 - 017 - 06911
STATE COUNTY PERMIT

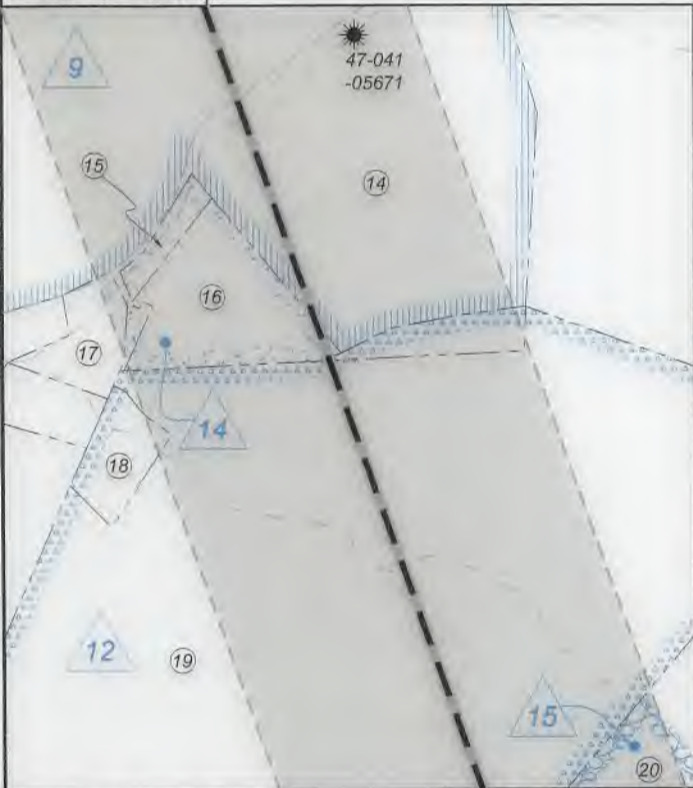
WELL TYPE: OIL GAS LIQUID INJECTION WASTE DISPOSAL
(IF GAS) PRODUCTION: STORAGE DEEP SHALLOW

LOCATION: ELEVATION: 1,111' WATERSHED: Sand Fork of Fink Creek QUADRANGLE: Vadis
DISTRICT: Cove/Freemans Creek COUNTY: Doddridge
SURFACE OWNER: John A. Schmidt ACREAGE: 237.07
ROYALTY OWNER: Frona M. Schmidt, et ux, et al LEASE NO: ACREAGE: 289.00
PROPOSED WORK: DRILL CONVERT DRILL DEEPER FRACTURE OR STIMULATE PLUG OFF OLD FORMATION
 PERFORATE NEW FORMATION OTHER PHYSICAL CHANGE IN WELL (SPECIFY) LP & BH - MOD 6,964' TVD
 PLUG AND ABANDON CLEAN OUT AND REPLUG TARGET FORMATION: Marcellus Shale ESTIMATED DEPTH: 28,259' MD

WELL OPERATOR: HG Energy II Appalachia, LLC DESIGNATED AGENT: Diane C. White
ADDRESS: 5260 Dupont Road ADDRESS: 5260 Dupont Road
Parkersburg, WV 26101 Parkersburg, WV 26101



Detail 1 (1"=500')



**Well Location References
Not to Scale**

Schmidt 1222 Pad 5/8" rebar w/yellow plastic cap

Proposed Well Schmidt 1222 S-3H

5/8" rebar w/yellow plastic cap

AZ177° 294'

AZ109° 287'

Legend

- Proposed gas well
- Well Reference, as noted
- Monument, as noted
- Existing Well, as noted
- Existing Plugged Well, as noted
- Digitized Well, as noted
- Creek or Drain
- Existing Road
- Surface boundary (approx.)
- Adjoinder surface tracts (approx.)
- County Line (approx.)

FILE NO: 156-12-FC-21
DRAWING NO: Schmidt 1222 S-3H Well Plat
SCALE: 1" = 2000'
MINIMUM DEGREE OF ACCURACY: Submeter
PROVEN SOURCE OF ELEVATION: CORS, Bridgeport, WV

STATE OF WEST VIRGINIA
DEPARTMENT OF ENVIRONMENTAL PROTECTION
OIL AND GAS DIVISION

DATE: September 2 2022
OPERATOR'S WELL NO. Schmidt 1222 S-3H
API WELL NO MOD
47 - 017 - 06911
STATE COUNTY PERMIT

WELL TYPE: OIL GAS LIQUID INJECTION WASTE DISPOSAL
(IF GAS) PRODUCTION: STORAGE DEEP SHALLOW

LOCATION: ELEVATION: 1,111' WATERSHED: Sand Fork of Fink Creek
DISTRICT: Cove/Freemans Creek
SURFACE OWNER: John A. Schmidt
ROYALTY OWNER: Frona M. Schmidt, et ux, et al LEASE NO: ACREAGE: 289.00
PROPOSED WORK: DRILL CONVERT DRILL DEEPER FRACTURE OR STIMULATE PLUG OFF OLD FORMATION
 PERFORATE NEW FORMATION OTHER PHYSICAL CHANGE IN WELL (SPECIFY) LP & BH - MOD 6,964' TVD
 PLUG AND ABANDON CLEAN OUT AND REPLUG TARGET FORMATION: Marcellus Shale ESTIMATED DEPTH: 28,259' MD

WELL OPERATOR: HG Energy II Appalachia, LLC DESIGNATED AGENT: Diane C. White
ADDRESS: 5260 Dupont Road ADDRESS: 5260 Dupont Road
Parkersburg, WV 26101 Parkersburg, WV 26101



ID	Lease
1	Frona M. Schmidt, et vir
2	Leopold Krenn, et ux
4	Theresia M. Bode, et ux
6	HG Energy II Appalachia, LLC
7	HG Energy II Appalachia, LLC
9	W.E. Means, et ux
12	C.E. Lattea, et al
13	A.T. Gooden, et ux
14	Blanch Stepp, et al
15	J.M. West, et al
24	Ursula & A.L. Smith, et al
30	Glenn G. Rastie, et al
51	David N. King, et al
52	Edna Loraine Hams

Doddridge Co. - Cove Dist.				
No.	TM / Par	Owner	Bk / Pg	Ac.
1	10 / 18.1	John A. Schmidt	281 / 622	237.07
2	10 / 2.3	Daniel L. & Yvette L. King	336 / 355	44.41
3	14 / 2	Georganna & Henry Miller, Jr.	333 / 202	153.55
4	10 / 19	Marilyn Barns & Carolyn Bass	W28 / 52	175.00
5	14 / 2.4	Marguerite Dombroski	W33 / 526	38.43
6	14 / 2.3	John W. & Jennie Lacy	216 / 509	63.04
7	14 / 2.1	Lois Hluhan	262 / 583	80.60
Lewis Co. - Freemans Creek Dist.				
No.	TM / Par	Owner	Bk / Pg	Ac.
8	2D / 1	Dennis P. Keely, et al	716 / 520	132.50
9	1D / 12	Dolores Hinterer	WB Y / 218	138.19
10	2D / 6	Margaret Hamberry Estate	Appr 533 / 46	57.25
11	1D / 11.2	James Byer, Jr.	603 / 60	30.03
12	2D / 8	Dawn C. Lozina, et al	726 / 836	63.95
13	2D / 13	Sharon & Francis L. Hartlaub, Jr.	639 / 89	104.34
14	2E / 2	Brenda J. Parks Lydon, et al	747 / 656	67.61
15	2E / 7	James R. & Kathy A. Ireland	612 / 38	1.00
16	2E / 5	James R. & Kathy A. Ireland	612 / 38	2.75
17	2E / 8	James G. Ireland	639 / 493	1.15
18	2E / 11	James G. Ireland	639 / 493	1.00
19	2E / 12	Fred J. Rinker, et al	609 / 481	71.25
20	2E / 37	Frank & Lillie Swisher	637 / 691	33.00
21	2E / 13	Richard B. Toothman, Jr.	760 / 608	36.75
22	2E / 14	Richard B. Toothman, Jr.	760 / 608	5.00
23	2E / 16	David N. & Rebecca King	638 / 776	35.05
24	2E / 18	David N. & Rebecca King	638 / 776	32.00
25	2E / 15	Frank & Lillie Swisher	637 / 691	18.75
26	2E / 30	Frank & Lillie Swisher	637 / 691	38.00
27	2E / 29.22	Richard B. Toothman, Jr.	760 / 608	4.32
28	2E / 29.10	Richard B. Toothman, Jr.	760 / 608	13.56
29	2E / 29.9	Richard B. Toothman, Jr.	760 / 608	9.53
30	2E / 29.8	G. Randy & Belua Cunningham	498 / 588	6.89
31	2E / 26	Richard B. Toothman, Jr.	760 / 608	26.50

FILE NO: 156-12-FC-21
DRAWING NO: Schmidt 1222 S-3H Well Plat
SCALE: 1" = 2000'
MINIMUM DEGREE OF ACCURACY:
Submeter
PROVEN SOURCE OF ELEVATION:
CORS, Bridgeport, WV

STATE OF WEST VIRGINIA
DEPARTMENT OF ENVIRONMENTAL PROTECTION
OIL AND GAS DIVISION

DATE: September 2 2022
OPERATOR'S WELL NO. Schmidt 1222 S-3H
API WELL NO **MO D**
47 - 017 - 06911
STATE COUNTY PERMIT

WELL TYPE: OIL GAS LIQUID INJECTION WASTE DISPOSAL
(IF GAS) PRODUCTION: STORAGE DEEP SHALLOW

LOCATION: ELEVATION: 1,111' WATERSHED: Sand Fork of Fink Creek

QUADRANGLE: Vadis
COUNTY: Doddridge
ACREAGE: 237.07

DISTRICT: Cove/Freemans Creek
SURFACE OWNER: John A. Schmidt
ROYALTY OWNER: Frona M. Schmidt, et ux, et al LEASE NO: ACREAGE: 289.00
PROPOSED WORK: DRILL CONVERT DRILL DEEPER FRACTURE OR STIMULATE PLUG OFF OLD FORMATION
 PERFORATE NEW FORMATION OTHER PHYSICAL CHANGE IN WELL (SPECIFY) LP & BH - MOD 6,964' TVD
 PLUG AND ABANDON CLEAN OUT AND REPLUG TARGET FORMATION: Marcellus Shale ESTIMATED DEPTH: 28,259' MD

WELL OPERATOR: HG Energy II Appalachia, LLC DESIGNATED AGENT: Diane C. White
ADDRESS: 5260 Dupont Road ADDRESS: 5260 Dupont Road
Parkersburg, WV 26101 Parkersburg, WV 26101

**INFORMATION SUPPLIED UNDER WEST VIRGINIA CODE
Chapter 22, Article 6A, Section 5(a)(5)
IN LIEU OF FILING LEASE(S) AND OTHER CONTINUING CONTRACT(S)**

Under the oath required to make the verification on page 1 of this Notice and Application, I depose and say that I am the person who signed the Notice and Application for the Applicant, and that –

- (1) the tract of land is the same tract described in this Application, partly or wholly depicted in the accompanying plat, and described in the Construction and Reclamation Plan;
- (2) the parties and recordation data (if recorded) for lease(s) or other continuing contract(s) by which the Applicant claims the right to extract, produce or market the oil or gas are as follows:

Lease Name or Number	Grantor, Lessor, etc.	Grantee, Lessee, etc.	Royalty	Book/Page
----------------------	-----------------------	-----------------------	---------	-----------

See Attached Sheets

**Acknowledgement of Possible Permitting/Approval
In Addition to the Office of Oil and Gas**

The permit applicant for the proposed well work addressed in this application hereby acknowledges the possibility of the need for permits and/or approvals from local, state, or federal entities in addition to the DEP, Office of Oil and Gas, including but not limited to the following:

- WV Division of Water and Waste Management
- WV Division of Natural Resources WV Division of Highways
- U.S. Army Corps of Engineers
- U.S. Fish and Wildlife Service
- County Floodplain Coordinator

The applicant further acknowledges that any Office of Oil and Gas permit in no way overrides, replaces, or nullifies the need for other permits/approvals that may be necessary and further affirms that all needed permits/approvals should be acquired from the appropriate authority before the affected activity is initiated.

Well Operator: HG Energy II Appalachia, LLC
 By: Diane White *Diane White*
 Its: Accountant

HG Energy II Appalachia, LLC - Schmidt 1222 N3H Lease Chains

1222S Tract	LEGACY LEASE NUMBER	TAX MAP	LEASE NUMBER	GRANTOR/LESSOR	GRANTEE/LESSEE	ROYALTY	DEED BOOK	PAGE
1	FK054795	02-0010-0018-0000 02-0010-0018-0001	Q100676000	FRONA SCHMIDT AND E. A. SCHMIDT, HER HUSBAND	HOPE NATURAL GAS COMPANY	NOT LESS THAN 1/8	54	167
				HOPE NATURAL GAS COMPANY	CONSOLIDATED GAS SUPPLY CORPORATION	CONFIRMATORY DEED	143	345
				CONSOLIDATED GAS SUPPLY CORPORATION	CONSOLIDATED GAS TRANSMISSION CORPORATION	ASSIGNMENT	135	583
				CONSOLIDATED GAS TRANSMISSION CORPORATION	CNG TRANSMISSION CORPORATION	MERGER/NAME CHANGE	WVSOS	
				CNG TRANSMISSION CORPORATION	DOMINION TRANSMISSION, INC.	MERGER/NAME CHANGE	WVSOS	
				DOMINION TRANSMISSION, INC.	CNX GAS COMPANY LLC	MEMORANDUM OF FARMOUT AGREEMENT	323	187
				CNX GAS COMPANY LLC	NOBLE ENERGY, INC.	LIMITED PARTIAL ASSIGNMENT (50%)	337	446
				DOMINION TRANSMISSION, INC.	CNX GAS COMPANY LLC AND NOBLE ENERGY, INC.	PARTIAL ASSIGNMENT (32%)	424	234
				CNX GAS COMPANY LLC	NOBLE ENERGY, INC.	ASSIGNMENT	377	212
				NOBLE ENERGY, INC.	HG ENERGY II APPALACHIA, LLC	ASSIGNMENT	449	364
				DOMINON TRANSMISSION, INC.	DOMINION ENERGY TRANSMISSION, INC.	MERGER/NAME CHANGE	WVSOS	
				DOMINION ENERGY TRANSMISSION, INC.	HG ENERGY II APPALACHIA, LLC	SECOND AMENDMENT TO MEMORANDUM OF FARMOUT AGREEMENT	454	483
				DOMINION ENERGY TRANSMISSION, INC.	HG ENERGY II APPALACHIA, LLC	THIRD AMENDMENT TO MEMORANDUM OF FARMOUT AGREEMENT	475	576
				DOMINION ENERGY TRANSMISSION, INC.	HG ENERGY II APPALACHIA, LLC	ASSIGNMENT (68%)	479	1
30	FK064894	02-0010-0019-0000	Q100708000	GLENN G. RASTLE AND NINA RASTLE, HIS WIFE; EDNA KRENN AND HENRY KRENN JR., HER HUSBAND; JOSEPH C. WOOFER; AND ALFRED J. WOOFER AND RUTH WOOFER, HIS WIFE	HOPE NATURAL GAS COMPANY	NOT LESS THAN 1/8	58	81
				HOPE NATURAL GAS COMPANY	CONSOLIDATED GAS SUPPLY CORPORATION	CONFIRMATORY DEED	143	345
				CONSOLIDATED GAS SUPPLY CORPORATION	CONSOLIDATED GAS TRANSMISSION CORPORATION	ASSIGNMENT	135	583
				CONSOLIDATED GAS TRANSMISSION CORPORATION	CNG TRANSMISSION CORPORATION	MERGER/NAME CHANGE	WVSOS	
				CNG TRANSMISSION CORPORATION	DOMINION TRANSMISSION, INC.	MERGER/NAME CHANGE	WVSOS	
				DOMINION TRANSMISSION, INC.	CNX GAS COMPANY LLC	MEMORANDUM OF FARMOUT AGREEMENT	323	187
				CNX GAS COMPANY LLC	NOBLE ENERGY, INC.	LIMITED PARTIAL ASSIGNMENT (50%)	337	446
				JOHN ANCIL SCHMIDT	CNX GAS COMPANY LLC	NOT LESS THAN 1/8	417	711
				DOMINION TRANSMISSION, INC.	CNX GAS COMPANY LLC AND NOBLE ENERGY, INC.	PARTIAL ASSIGNMENT (32%)	424	234
				CNX GAS COMPANY LLC	NOBLE ENERGY, INC.	ASSIGNMENT	377	212
				NOBLE ENERGY, INC.	HG ENERGY II APPALACHIA, LLC	ASSIGNMENT	449	390
				DOMINON TRANSMISSION, INC.	DOMINION ENERGY TRANSMISSION, INC.	MERGER/NAME CHANGE	WVSOS	
				DOMINION ENERGY TRANSMISSION, INC.	HG ENERGY II APPALACHIA, LLC	SECOND AMENDMENT TO MEMORANDUM OF FARMOUT AGREEMENT	454	483
				DOMINION ENERGY TRANSMISSION, INC.	HG ENERGY II APPALACHIA, LLC	THIRD AMENDMENT TO MEMORANDUM OF FARMOUT AGREEMENT	475	576
DOMINION ENERGY TRANSMISSION, INC.	HG ENERGY II APPALACHIA, LLC	ASSIGNMENT (68%)	479	1				
2	FK054802 FK087531 FEE	02-0014-0002-0000 02-0014-0002-0001 02-0014-0002-0002 02-0014-0002-0003	Q100902000	LEOPOLD KRENN AND THERESIA KRENN, HIS WIFE	SOUTH PENN OIL COMPANY	NOT LESS THAN 1/8	23	157
				SOUTH PENN OIL COMPANY	SOUTH PENN NATURAL GAS CO	ASSIGNMENT	53	162
				SOUTH PENN NATURAL GAS CO	HOPE NATURAL GAS COMPANY	ASSIGNMENT	54	178
				HOPE NATURAL GAS COMPANY	CONSOLIDATED GAS SUPPLY CORPORATION	CONFIRMATORY DEED	143	345
				CONSOLIDATED GAS SUPPLY CORPORATION	CONSOLIDATED GAS TRANSMISSION CORPORATION	ASSIGNMENT	135	583
				CONSOLIDATED GAS TRANSMISSION CORPORATION	CNG TRANSMISSION CORPORATION	MERGER/NAME CHANGE	WVSOS	
				CNG TRANSMISSION CORPORATION	DOMINION TRANSMISSION, INC.	MERGER/NAME CHANGE	WVSOS	
				DOMINION TRANSMISSION, INC.	CNX GAS COMPANY LLC	MEMORANDUM OF FARMOUT AGREEMENT	323	187
				CNX GAS COMPANY LLC	NOBLE ENERGY, INC.	LIMITED PARTIAL ASSIGNMENT (50%)	337	446
				DOMINION TRANSMISSION, INC.	CNX GAS COMPANY LLC AND NOBLE ENERGY INC	NOT LESS THAN 1/8	394	646
				DOMINION TRANSMISSION, INC.	CNX GAS COMPANY LLC AND NOBLE ENERGY, INC.	PARTIAL ASSIGNMENT (32%)	424	234

4701706911

		02-0014-0002-0004		CNX GAS COMPANY LLC	NOBLE ENERGY, INC.	ASSIGNMENT	377	212
				NOBLE ENERGY, INC.	HG ENERGY II APPALACHIA, LLC	ASSIGNMENT	449	468
				DOMINON TRANSMISSION, INC.	DOMINION ENERGY TRANSMISSION, INC.	MERGER/NAME CHANGE	WVSOS	
				DOMINION ENERGY TRANSMISSION, INC.	HG ENERGY II APPALACHIA, LLC	SECOND AMENDMENT TO MEMORANDUM OF FARMOUT AGREEMENT	454	483
				DOMINION ENERGY TRANSMISSION, INC.	HG ENERGY II APPALACHIA, LLC	THIRD AMENDMENT TO MEMORANDUM OF FARMOUT AGREEMENT	475	576
				DOMINION ENERGY TRANSMISSION, INC.	HG ENERGY II APPALACHIA, LLC	ASSIGNMENT (68%)	479	1
4	FK054813 FK079439 FEE	03-001D-0012-0000 03-001D-0013-0000	Q100489000	THERESIA M. BODE AND H. C. BODE, HUSBAND AND WIFE	SOUTH PENN OIL COMPANY	NOT LESS THAN 1/8	58	578
				SOUTH PENN OIL COMPANY	SOUTH PENN NATURAL GAS CO	ASSIGNMENT	156	570
				SOUTH PENN NATURAL GAS CO	HOPE NATURAL GAS COMPANY	ASSIGNMENT	166	494
				HOPE NATURAL GAS COMPANY	CONSOLIDATED GAS SUPPLY CORPORATION	CONFIRMATORY DEED	294	89
				CONSOLIDATED GAS SUPPLY CORPORATION	CONSOLIDATED GAS TRANSMISSION CORPORATION	ASSIGNMENT	425	127
				CONSOLIDATED GAS TRANSMISSION CORPORATION	CNG TRANSMISSION CORPORATION	MERGER/NAME CHANGE	WVSOS	
				CNG TRANSMISSION CORPORATION	DOMINION TRANSMISSION, INC.	MERGER/NAME CHANGE	WVSOS	
				DOMINION TRANSMISSION, INC.	CNX GAS COMPANY LLC	MEMORANDUM OF FARMOUT AGREEMENT	672	154
				CNX GAS COMPANY LLC	NOBLE ENERGY, INC.	LIMITED PARTIAL ASSIGNMENT (50%)	684	57
				DOMINION TRANSMISSION, INC.	CNX GAS COMPANY LLC AND NOBLE ENERGY, INC.	PARTIAL ASSIGNMENT (32%)	712	848
				CNX GAS COMPANY LLC	NOBLE ENERGY, INC.	ASSIGNMENT	717	1
				NOBLE ENERGY, INC.	HG ENERGY II APPALACHIA, LLC	ASSIGNMENT	722	170
				DOMINION TRANSMISSION, INC.	DOMINION ENERGY TRANSMISSION, INC.	MERGER/NAME CHANGE	WVSOS	
				DOMINION ENERGY TRANSMISSION, INC.	HG ENERGY II APPALACHIA, LLC	SECOND AMENDMENT TO MEMORANDUM OF FARMOUT AGREEMENT	723	499
DOMINION ENERGY TRANSMISSION, INC.	HG ENERGY II APPALACHIA, LLC	THIRD AMENDMENT TO MEMORANDUM OF FARMOUT AGREEMENT	734	558				
DOMINION ENERGY TRANSMISSION, INC.	HG ENERGY II APPALACHIA, LLC	ASSIGNMENT (68%)	736	220				
6	FK079484 FEE	03-002D-0005-0000 03-002D-0006-0000 03-001D-0011-0002	FK079484 FEE	DOMINION TRANSMISSION, INC.	CNX GAS COMPANY LLC	MEMORANDUM OF FARMOUT AGREEMENT	672	154
				CNX GAS COMPANY LLC	NOBLE ENERGY, INC.	LIMITED PARTIAL ASSIGNMENT (50%)	684	57
				DOMINION TRANSMISSION, INC.	CNX GAS COMPANY LLC AND NOBLE ENERGY INC	NOT LESS THAN 1/8	692	570
				CNX GAS COMPANY LLC	NOBLE ENERGY, INC.	ASSIGNMENT	717	1
				NOBLE ENERGY, INC.	HG ENERGY II APPALACHIA, LLC	ASSIGNMENT	722	170
				DOMINON TRANSMISSION, INC.	DOMINION ENERGY TRANSMISSION, INC.	MERGER/NAME CHANGE	WVSOS	
				DOMINION ENERGY TRANSMISSION, INC.	HG ENERGY II APPALACHIA, LLC	SECOND AMENDMENT TO MEMORANDUM OF FARMOUT AGREEMENT	723	499
				DOMINION ENERGY TRANSMISSION, INC.	HG ENERGY II APPALACHIA, LLC	THIRD AMENDMENT TO MEMORANDUM OF FARMOUT AGREEMENT	734	558
DOMINION ENERGY TRANSMISSION, INC.	HG ENERGY II APPALACHIA, LLC	MINERAL DEED	740	746				
7	FK078560 FEE	03-001D-0015-0000 03-001D-0017-0000 03-002D-0008-0000 03-002D-0009-0000	FK078560 FEE	OTHO MEANS AND OMIE MEANS, HIS WIFE	SOUTH PENN OIL COMPANY	NOT LESS THAN 1/8	99	68
				SOUTH PENN OIL COMPANY	SOUTH PENN NATURAL GAS CO	ASSIGNMENT	156	570
				SOUTH PENN NATURAL GAS CO	HOPE NATURAL GAS COMPANY	ASSIGNMENT	106	494
				HOPE NATURAL GAS COMPANY	CONSOLIDATED GAS SUPPLY CORPORATION	CONFIRMATORY DEED	294	89
				CONSOLIDATED GAS SUPPLY CORPORATION	CONSOLIDATED GAS TRANSMISSION CORPORATION	ASSIGNMENT	425	127
				CONSOLIDATED GAS TRANSMISSION CORPORATION	CNG TRANSMISSION CORPORATION	MERGER/NAME CHANGE	51	795
				CNG TRANSMISSION CORPORATION	DOMINION TRANSMISSION, INC.	MERGER/NAME CHANGE	58	362
				DOMINION TRANSMISSION, INC.	CNX GAS COMPANY LLC	MEMORANDUM OF FARMOUT AGREEMENT	672	154
				CNX GAS COMPANY LLC	NOBLE ENERGY, INC.	LIMITED PARTIAL ASSIGNMENT (50%)	684	57
				DOMINON TRANSMISSION, INC.	DOMINION ENERGY TRANSMISSION, INC.	MERGER/NAME CHANGE	WVSOS	
				DOMINION ENERGY TRANSMISSION, INC.	HG ENERGY II APPALACHIA, LLC	SECOND AMENDMENT TO MEMORANDUM OF FARMOUT AGREEMENT	723	499
				DOMINION ENERGY TRANSMISSION, INC.	HG ENERGY II APPALACHIA, LLC	THIRD AMENDMENT TO MEMORANDUM OF FARMOUT AGREEMENT	734	558
				DOMINION ENERGY TRANSMISSION, INC.	HG ENERGY II APPALACHIA, LLC	MINERAL DEED	740	746
				A. T. GOODEN AND O. N. GODDEN, HIS WIFE	SOUTH PENN OIL COMPANY	NOT LESS THAN 1/8	39	313
				SOUTH PENN OIL COMPANY	SOUTH PENN NATURAL GAS CO	ASSIGNMENT	156	570

4701706911

13	FK054817 FK078871 FEE FK079964 FEE FK026593 FEE	03-002D-0007-0000 03-002D-0011-0000 03-002D-0012-0000 03-002D-0013-0000 03-002D-0014-0000 03-002D-0014-0001 03-002E-0061-0000	Q100280000	SOUTH PENN NATURAL GAS CO	HOPE NATURAL GAS COMPANY	ASSIGNMENT	166	494
				HOPE NATURAL GAS COMPANY	CONSOLIDATED GAS SUPPLY CORPORATION	CONFIRMATORY DEED	294	89
				CONSOLIDATED GAS SUPPLY CORPORATION	CONSOLIDATED GAS TRANSMISSION CORPORATION	ASSIGNMENT	425	127
				CONSOLIDATED GAS TRANSMISSION CORPORATION	CNG TRANSMISSION CORPORATION	MERGER/NAME CHANGE	51	795
				CNG TRANSMISSION CORPORATION	DOMINION TRANSMISSION, INC.	MERGER/NAME CHANGE	9	628
				DOMINION TRANSMISSION, INC.	CNX GAS COMPANY LLC	MEMORANDUM OF FARMOUT AGREEMENT	672	154
				CNX GAS COMPANY LLC	NOBLE ENERGY, INC.	LIMITED PARTIAL ASSIGNMENT (50%)	684	57
				DOMINION TRANSMISSION, INC.	CNX GAS COMPANY LLC AND NOBLE ENERGY, INC.	PARTIAL ASSIGNMENT (32%)	712	848
				CNX GAS COMPANY LLC	NOBLE ENERGY, INC.	ASSIGNMENT	717	1
				NOBLE ENERGY, INC.	HG ENERGY II APPALACHIA, LLC	ASSIGNMENT	722	170
				DOMINON TRANSMISSION, INC.	DOMINION ENERGY TRANSMISSION, INC.	MERGER/NAME CHANGE	WVSOS	
				DOMINION ENERGY TRANSMISSION, INC.	HG ENERGY II APPALACHIA, LLC	SECOND AMENDMENT TO MEMORANDUM OF FARMOUT AGREEMENT	723	499
				DOMINION ENERGY TRANSMISSION, INC.	HG ENERGY II APPALACHIA, LLC	THIRD AMENDMENT TO MEMORANDUM OF FARMOUT AGREEMENT	734	558
DOMINION ENERGY TRANSMISSION, INC.	HG ENERGY II APPALACHIA, LLC	ASSIGNMENT (68%)	736	220				
9	FK051065 FK079964 FEE	03-002E-0002-0000	Q100426000	W. E. MEANS AND GRACE T. MEANS, HIS WIFE	HOPE NATURAL GAS COMPANY	NOT LESS THAN 1/8	153	29
				HOPE NATURAL GAS COMPANY	CONSOLIDATED GAS SUPPLY CORPORATION	CONFIRMATORY DEED	294	89
				CONSOLIDATED GAS SUPPLY CORPORATION	CONSOLIDATED GAS TRANSMISSION CORPORATION	ASSIGNMENT	425	127
				CONSOLIDATED GAS TRANSMISSION CORPORATION	CNG TRANSMISSION CORPORATION	MERGER/NAME CHANGE	51	795
				CNG TRANSMISSION CORPORATION	DOMINION TRANSMISSION, INC.	MERGER/NAME CHANGE	9	628
				DOMINION TRANSMISSION, INC.	CNX GAS COMPANY LLC	MEMORANDUM OF FARMOUT AGREEMENT	672	154
				CNX GAS COMPANY LLC	NOBLE ENERGY, INC.	LIMITED PARTIAL ASSIGNMENT (50%)	684	57
				DOMINION TRANSMISSION, INC.	CNX GAS COMPANY LLC AND NOBLE ENERGY, INC.	PARTIAL ASSIGNMENT (32%)	712	848
				CNX GAS COMPANY LLC	NOBLE ENERGY, INC.	ASSIGNMENT	717	1
				NOBLE ENERGY, INC.	HG ENERGY II APPALACHIA, LLC	ASSIGNMENT	722	170
				DOMINON TRANSMISSION, INC.	DOMINION ENERGY TRANSMISSION, INC.	MERGER/NAME CHANGE	WVSOS	
				DOMINION ENERGY TRANSMISSION, INC.	HG ENERGY II APPALACHIA, LLC	SECOND AMENDMENT TO MEMORANDUM OF FARMOUT AGREEMENT	723	499
				DOMINION ENERGY TRANSMISSION, INC.	HG ENERGY II APPALACHIA, LLC	THIRD AMENDMENT TO MEMORANDUM OF FARMOUT AGREEMENT	734	558
DOMINION ENERGY TRANSMISSION, INC.	HG ENERGY II APPALACHIA, LLC	ASSIGNMENT (68%)	736	220				
14	FK051058	03-002E-0005-0000 03-002E-0006-0000 03-002E-0007-0000	Q100266000	BLANCH STEPP ET AL	HOPE NATURAL GAS COMPANY	NOT LESS THAN 1/8	153	47
				HOPE NATURAL GAS COMPANY	CONSOLIDATED GAS SUPPLY CORPORATION	CONFIRMATORY DEED	294	89
				CONSOLIDATED GAS SUPPLY CORPORATION	CONSOLIDATED GAS TRANSMISSION CORPORATION	ASSIGNMENT	425	127
				CONSOLIDATED GAS TRANSMISSION CORPORATION	CNG TRANSMISSION CORPORATION	MERGER/NAME CHANGE	51	795
				CNG TRANSMISSION CORPORATION	DOMINION TRANSMISSION, INC.	MERGER/NAME CHANGE	9	628
				DOMINION TRANSMISSION, INC.	CNX GAS COMPANY LLC	MEMORANDUM OF FARMOUT AGREEMENT	672	154
				CNX GAS COMPANY LLC	NOBLE ENERGY, INC.	LIMITED PARTIAL ASSIGNMENT (50%)	684	57
				DOMINION TRANSMISSION, INC.	CNX GAS COMPANY LLC AND NOBLE ENERGY, INC.	PARTIAL ASSIGNMENT (32%)	712	848
				CNX GAS COMPANY LLC	NOBLE ENERGY, INC.	ASSIGNMENT	717	1
				NOBLE ENERGY, INC.	HG ENERGY II APPALACHIA, LLC	ASSIGNMENT	722	170
				DOMINON TRANSMISSION, INC.	DOMINION ENERGY TRANSMISSION, INC.	MERGER/NAME CHANGE	WVSOS	
				DOMINION ENERGY TRANSMISSION, INC.	HG ENERGY II APPALACHIA, LLC	SECOND AMENDMENT TO MEMORANDUM OF FARMOUT AGREEMENT	723	499
				DOMINION ENERGY TRANSMISSION, INC.	HG ENERGY II APPALACHIA, LLC	THIRD AMENDMENT TO MEMORANDUM OF FARMOUT AGREEMENT	734	558
DOMINION ENERGY TRANSMISSION, INC.	HG ENERGY II APPALACHIA, LLC	ASSIGNMENT (68%)	736	220				
				C. E. LATTEA AND S. E. LATTEA, HIS WIFE; AND N.C. LATTEA, WIDOW	HOPE NATURAL GAS COMPANY	NOT LESS THAN 1/8	153	43
				HOPE NATURAL GAS COMPANY	CONSOLIDATED GAS SUPPLY CORPORATION	CONFIRMATORY DEED	294	89
				CONSOLIDATED GAS SUPPLY CORPORATION	CONSOLIDATED GAS TRANSMISSION CORPORATION	ASSIGNMENT	425	127
				CONSOLIDATED GAS TRANSMISSION CORPORATION	CNG TRANSMISSION CORPORATION	MERGER/NAME CHANGE	51	795
				CNG TRANSMISSION CORPORATION	DOMINION TRANSMISSION, INC.	MERGER/NAME CHANGE	9	628

4701706911

12	FK051059 FK079964 FEE	03-002E-0001-0000 03-002E-0012-0000	Q100467000	DOMINION TRANSMISSION, INC.	CNX GAS COMPANY LLC	MEMORANDUM OF FARMOUT AGREEMENT	672	154
				CNX GAS COMPANY LLC	NOBLE ENERGY, INC.	LIMITED PARTIAL ASSIGNMENT (50%)	684	57
				DOMINION TRANSMISSION, INC.	CNX GAS COMPANY LLC AND NOBLE ENERGY, INC.	PARTIAL ASSIGNMENT (32%)	712	848
				CNX GAS COMPANY LLC	NOBLE ENERGY, INC.	ASSIGNMENT	717	1
				NOBLE ENERGY, INC.	HG ENERGY II APPALACHIA, LLC	ASSIGNMENT	722	170
				DOMINON TRANSMISSION, INC.	DOMINION ENERGY TRANSMISSION, INC.	MERGER/NAME CHANGE	WVSOS	
				DOMINION ENERGY TRANSMISSION, INC.	HG ENERGY II APPALACHIA, LLC	SECOND AMENDMENT TO MEMORANDUM OF FARMOUT AGREEMENT	723	499
				DOMINION ENERGY TRANSMISSION, INC.	HG ENERGY II APPALACHIA, LLC	THIRD AMENDMENT TO MEMORANDUM OF FARMOUT AGREEMENT	734	558
				DOMINION ENERGY TRANSMISSION, INC.	HG ENERGY II APPALACHIA, LLC	ASSIGNMENT (68%)	736	220
				15	FK059324 FK079964 FEE FK084381 FEE	03-002E-0037-0000	Q100779000	J.M. WEST ET AL
HOPE NATURAL GAS COMPANY	CONSOLIDATED GAS SUPPLY CORPORATION	CONFIRMATORY DEED	294					89
CONSOLIDATED GAS SUPPLY CORPORATION	CONSOLIDATED GAS TRANSMISSION CORPORATION	ASSIGNMENT	425					127
CONSOLIDATED GAS TRANSMISSION CORPORATION	CNG TRANSMISSION CORPORATION	MERGER/NAME CHANGE	51					795
CNG TRANSMISSION CORPORATION	DOMINION TRANSMISSION, INC.	MERGER/NAME CHANGE	9					628
DOMINION TRANSMISSION, INC.	CNX GAS COMPANY LLC	MEMORANDUM OF FARMOUT AGREEMENT	672					154
CNX GAS COMPANY LLC	NOBLE ENERGY, INC.	LIMITED PARTIAL ASSIGNMENT (50%)	684					57
DOMINION TRANSMISSION, INC.	CNX GAS COMPANY LLC AND NOBLE ENERGY, INC.	PARTIAL ASSIGNMENT (32%)	712					848
CNX GAS COMPANY LLC	NOBLE ENERGY, INC.	ASSIGNMENT	717					1
NOBLE ENERGY, INC.	HG ENERGY II APPALACHIA, LLC	ASSIGNMENT	722					170
DOMINON TRANSMISSION, INC.	DOMINION ENERGY TRANSMISSION, INC.	MERGER/NAME CHANGE	WVSOS					
DOMINION ENERGY TRANSMISSION, INC.	HG ENERGY II APPALACHIA, LLC	SECOND AMENDMENT TO MEMORANDUM OF FARMOUT AGREEMENT	723					499
DOMINION ENERGY TRANSMISSION, INC.	HG ENERGY II APPALACHIA, LLC	THIRD AMENDMENT TO MEMORANDUM OF FARMOUT AGREEMENT	734					558
DOMINION ENERGY TRANSMISSION, INC.	HG ENERGY II APPALACHIA, LLC	ASSIGNMENT (68%)	736					220
52	N/A	03-002E-0014-0000	HGII01929	Edna Loraine Harris	HG ENERGY II APPALACHIA, LLC	NOT LESS THAN 1/8	775	818
24	FK059558 FK072221	03-002E-0015-0000 03-002E-0030-0000	Q100688000 Q101068000	URSULA SMITH AND A. L. SMITH, HER HUSBAND; J. ROY WATSON, COMMITTEE FOR BESSIE STOUT; AND PORTER G. STOUT AND JENNIE E. STOUT, HIS WIFE	HOPE NATURAL GAS COMPANY	NOT LESS THAN 1/8	193	35
				W.D. CHAPMAN, COMMITTEE FOR BESSIE STOUT	HOPE NATURAL GAS COMPANY	NOT LESS THAN 1/8	282	3
				HOPE NATURAL GAS COMPANY	CONSOLIDATED GAS SUPPLY CORPORATION	CONFIRMATORY DEED	294	89
				CONSOLIDATED GAS SUPPLY CORPORATION	CONSOLIDATED GAS TRANSMISSION CORPORATION	ASSIGNMENT	425	127
				CONSOLIDATED GAS TRANSMISSION CORPORATION	CNG TRANSMISSION CORPORATION	MERGER/NAME CHANGE	51	795
				CNG TRANSMISSION CORPORATION	DOMINION TRANSMISSION, INC.	MERGER/NAME CHANGE	9	628
				DOMINION TRANSMISSION, INC.	CNX GAS COMPANY LLC	MEMORANDUM OF FARMOUT AGREEMENT	672	154
				CNX GAS COMPANY LLC	NOBLE ENERGY, INC.	LIMITED PARTIAL ASSIGNMENT (50%)	684	57
				DOMINION TRANSMISSION, INC.	CNX GAS COMPANY LLC AND NOBLE ENERGY, INC.	PARTIAL ASSIGNMENT (32%)	712	848
				CNX GAS COMPANY LLC	NOBLE ENERGY, INC.	ASSIGNMENT	717	1
				NOBLE ENERGY, INC.	HG ENERGY II APPALACHIA, LLC	ASSIGNMENT	722	170
				DOMINON TRANSMISSION, INC.	DOMINION ENERGY TRANSMISSION, INC.	MERGER/NAME CHANGE	WVSOS	
				DOMINION ENERGY TRANSMISSION, INC.	HG ENERGY II APPALACHIA, LLC	SECOND AMENDMENT TO MEMORANDUM OF FARMOUT AGREEMENT	723	499
				DOMINION ENERGY TRANSMISSION, INC.	HG ENERGY II APPALACHIA, LLC	THIRD AMENDMENT TO MEMORANDUM OF FARMOUT AGREEMENT	734	558
DOMINION ENERGY TRANSMISSION, INC.	HG ENERGY II APPALACHIA, LLC	ASSIGNMENT (68%)	736	220				
51	N/A	03-002E-0016-0000 03-002E-0018-0000	TBD	David N. King et al.	HG ENERGY II APPALACHIA, LLC	NOT LESS THAN 1/8	787	144
				Cynthia D. Wilson	HG ENERGY II APPALACHIA, LLC	NOT LESS THAN 1/8	787	150
				Nancy A. King	HG ENERGY II APPALACHIA, LLC	NOT LESS THAN 1/8	787	148
				Joseph S. King	HG ENERGY II APPALACHIA, LLC	NOT LESS THAN 1/8	787	146

4701706911



HG Energy, LLC
5260 Dupont Road
Parkersburg, WV 26101
(304) 420-1100 - Office
(304) 863-3172 - Fax

470 170 69 11

August 19, 2022

Call# 032064
\$5000^e

WV DEP
Division of Oil & Gas
Attn: Cragin Blevins
601 57th Street
Charleston, West Virginia 25304

RE: Schmidt 1222 S-3H Drill Permit Revision Request – (47-017-06911)
Freeman's Creek District, Lewis County
West Virginia

Dear Mr. Blevins -

Per our discussions, enclosed are revised forms (survey plat, mylar, WW-6B, casing schematic, WW6A-1) and a check for expedited service for the 1222 S-3H well work permit revision request. We ask the permit be modified as additional leases have been secured to revise the lateral.

Please let me know if you have any questions or require additional information. I can be reached at (304) 420-1119 or dwhite@hgenergyllc.com.

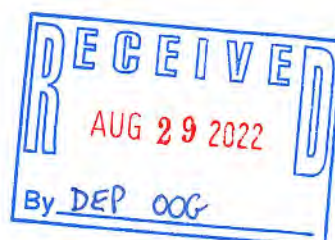
Very truly yours,

Diane White

Diane C. White

Enclosures

cc: Sam Ward – WV DEP State Inspector



09/16/2022



Stansberry, Wade A <wade.a.stansberry@wv.gov>

Expedited Modification Horizontal H6A Well Work Permit (47-017-06910, 06911, & 06922)

1 message

Stansberry, Wade A <wade.a.stansberry@wv.gov>

Mon, Sep 12, 2022 at 9:24 AM

To: Diane White <dwhite@hgenergyllc.com>, David Sponaugle <dsponaug@assessor.state.wv.us>, "Ward, Samuel D" <samuel.d.ward@wv.gov>

I have attached a copy of the newly issued well [permit](#) number. This will serve as your copy.

47-017-06910 - SCHMIDT 1222 S-2H
47-017-06911 - SCHMIDT 1222 S-3H
47-017-06922 - SCHMIDT 1222 S-1H

If you have any questions, then [please](#) contact us here at the Office of Oil and Gas.

Thank you,

Wade A. Stansberry

Environmental Resource Specialist 3

West Virginia Department of Environmental Protection

Office of Oil & Gas

601 57th St. SE


Charleston, WV 25304


(304) 926-0499 ext. 41115


(304) 926-0452 fax

Wade.A.Stansberry@wv.gov

3 attachments

 **47-017-06922 - mod.pdf**
2298K

 **47-017-06911 - mod.pdf**
2691K

 **47-017-06910 mod.pdf**
2459K

09/16/2022