

LATITUDE 39°15'00" ← 1,308'

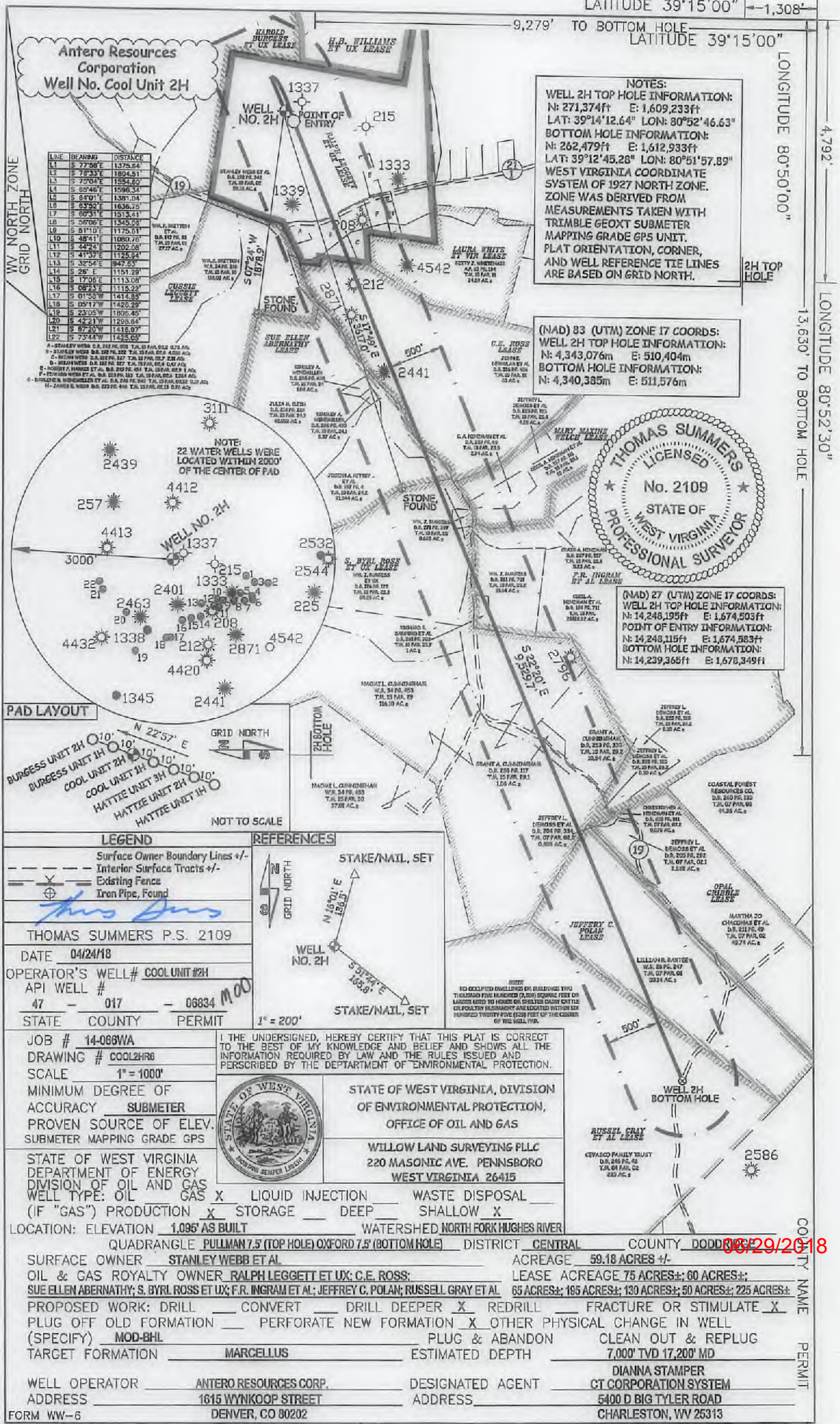
9,279' TO BOTTOM HOLE
LATITUDE 39°15'00"

LONGITUDE 80°50'00"

4,792'

LONGITUDE 80°52'30"

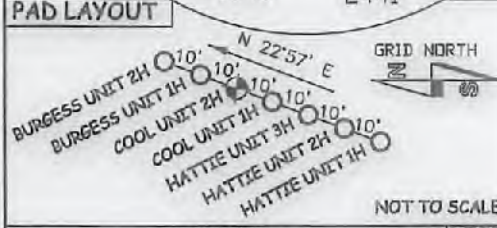
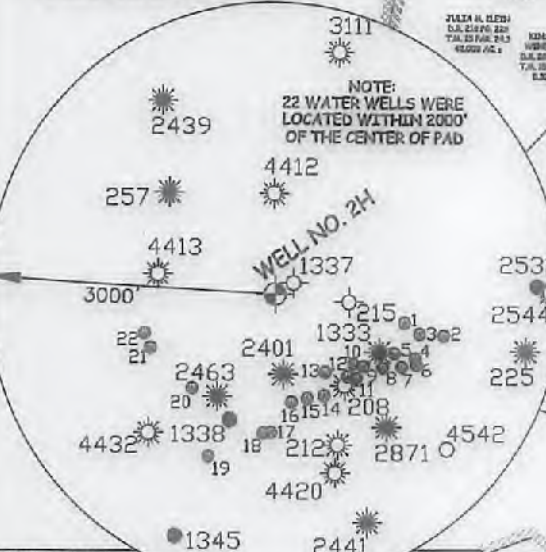
13,630' TO BOTTOM HOLE



Antero Resources Corporation
Well No. Cool Unit 2H

LINE	BEARING	DISTANCE
L1	S 77°58' E	1375.64
L2	S 73°33' E	1804.51
L3	S 75°04' E	1554.82
L4	S 65°46' E	1596.34
L5	S 64°01' E	1381.04
L6	S 63°52' E	1636.75
L7	S 60°31' E	1513.41
L8	S 56°06' E	1345.05
L9	S 61°10' E	1175.61
L10	S 48°41' E	1080.76
L11	S 44°24' E	1202.08
L12	S 47°37' E	1125.54
L13	S 32°54' E	947.53
L14	S 26' E	1151.29
L15	S 17°05' E	1113.08
L16	S 08°23' E	1115.22
L17	S 01°58' W	1414.85
L18	S 05°17' W	1425.29
L19	S 23°05' W	1806.45
L20	S 42°21' W	1298.64
L21	S 67°20' W	1616.97
L22	S 73°44' W	1425.05

A - STANLEY WEBB ET AL D.A. 252 PG. 203 T.A. 15 PAR. 022 073 AC.
 B - STANLEY WEBB D.A. 252 PG. 203 T.A. 15 PAR. 022 4209 AC.
 C - MICHAM WEBB D.A. 252 PG. 207 T.A. 15 PAR. 027 238 AC.
 D - MICHAM WEBB D.A. 252 PG. 207 T.A. 15 PAR. 024 047 AC.
 E - ROBERT C. HINDMAN ET AL D.A. 252 PG. 183 T.A. 15 PAR. 028 1140 AC.
 F - EDWARD WEBB ET AL D.A. 252 PG. 183 T.A. 15 PAR. 025 1254 AC.
 G - EDWARD WEBB ET AL D.A. 252 PG. 183 T.A. 15 PAR. 022 232 AC.
 H - ZAHARA B. WEBB D.A. 252 PG. 416 T.A. 15 PAR. 023 220 AC.



LEGEND

- Surface Owner Boundary Lines +/-
- Interior Surface Tracts +/-
- Existing Fence
- Iron Pipe, Found

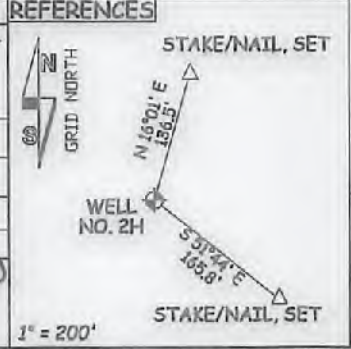
THOMAS SUMMERS P.S. 2109

DATE 04/24/18

OPERATOR'S WELL# COOL UNIT #2H

API WELL # 47 - 017 - 06834

STATE COUNTY PERMIT



I, THE UNDERSIGNED, HEREBY CERTIFY THAT THIS PLAT IS CORRECT TO THE BEST OF MY KNOWLEDGE AND BELIEF AND SHOWS ALL THE INFORMATION REQUIRED BY LAW AND THE RULES ISSUED AND PRESCRIBED BY THE DEPARTMENT OF ENVIRONMENTAL PROTECTION.



STATE OF WEST VIRGINIA, DIVISION OF ENVIRONMENTAL PROTECTION, OFFICE OF OIL AND GAS

WILLOW LAND SURVEYING PLLC
220 MASONIC AVE. PENNSBORO WEST VIRGINIA 26415

LOCATION: ELEVATION 1,095' AS BUILT WATERSHED NORTH FORK HUGHES RIVER

QUADRANGLE PULLMAN 7.5' (TOP HOLE) OXFORD 7.5' (BOTTOM HOLE) DISTRICT CENTRAL COUNTY DODD

SURFACE OWNER STANLEY WEBB ET AL ACREAGE 59.18 ACRES +/-

OIL & GAS ROYALTY OWNER RALPH LEGGETT ET UX; C.E. ROSS; SUE ELLEN ABERNATHY; S. BYRL ROSS ET UX; F.R. INGRAM ET AL; JEFFREY C. POLAN; RUSSELL GRAY ET AL LEASE ACREAGE 75 ACRES +/-; 60 ACRES +/-; 65 ACRES +/-; 195 ACRES +/-; 130 ACRES +/-; 50 ACRES +/-; 225 ACRES +/-

PROPOSED WORK: DRILL CONVERT DRILL DEEPER X REDRILL FRACTURE OR STIMULATE X PLUG OFF OLD FORMATION PERFORATE NEW FORMATION X OTHER PHYSICAL CHANGE IN WELL (SPECIFY) MOD-BHL PLUG & ABANDON CLEAN OUT & REPLUG

TARGET FORMATION MARCELLUS ESTIMATED DEPTH 7,000' TVD 17,200' MD

WELL OPERATOR ANTERO RESOURCES CORP. DESIGNATED AGENT DIANNA STAMPER
ADDRESS 1615 WYNKOOP STREET ADDRESS 5400 D BIG TYLER ROAD
FORM WW-6 DENVER, CO 80202 CHARLESTON, WV 25313

DATE 06/29/2018