

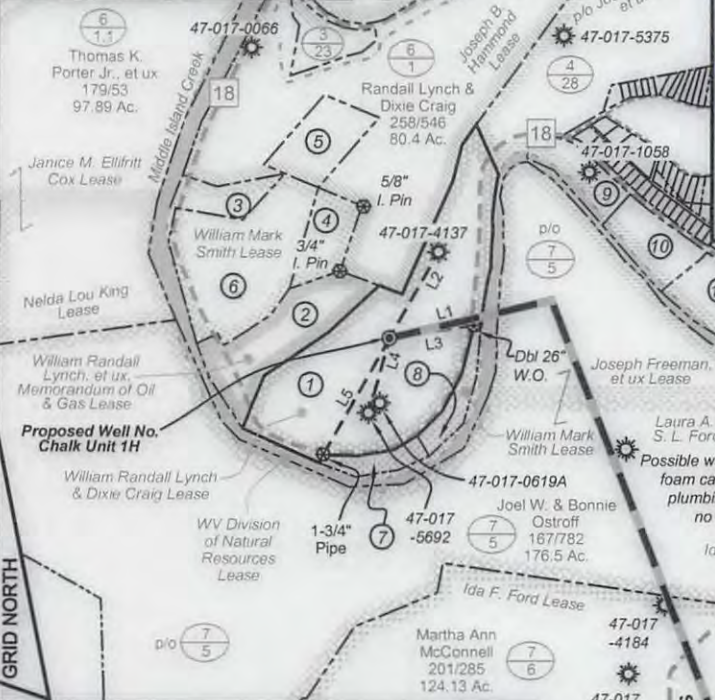
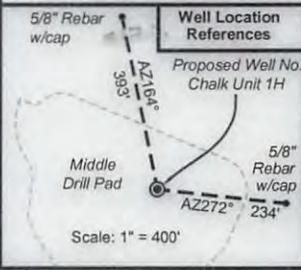
11,776' to Bottom Hole

4,227' to Top Hole

LATITUDE 39 - 20 - 00

TOP LONGITUDE 80 - 47 - 30  
BTM LONGITUDE 80 - 45 - 00

Antero Resources  
Well No. Chalk Unit 1H  
Antero Resources Corporation



TM/Par	Bk / Pg	Acres	Owner(s)
1	6/2	214 / 279	32.19
2	6/2.5	253 / 222	8.66
3	6/2.8	305 / 419	2.68
4	6/2.6	266 / 36	3.52
5	6/1.3	305 / 416	4.68
6	6/2.4	163 / 44	14.98
7	6/2.3	197 / 659	4.15
8	6/2.7	294 / 473	2.16
9	6/7	AP 35 / 212	3.46
10	7/4.2	293 / 340	4.19
11	7/4.1	301 / 466	5.49
12	7/4	301 / 464	6.14
13	6/3.1	237 / 371	8.78
14	7/23	129 / 38	99.52

I, the undersigned, hereby certify that this plat is correct to the best of my knowledge and belief and shows all the information required by law and the rules issued and prescribed by the Department of Environmental Protection.

*Kenneth J. Plum*  
Kenneth J. Plum, P.S. 2216

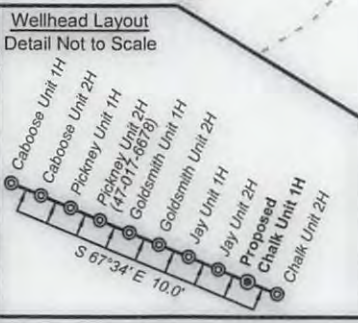
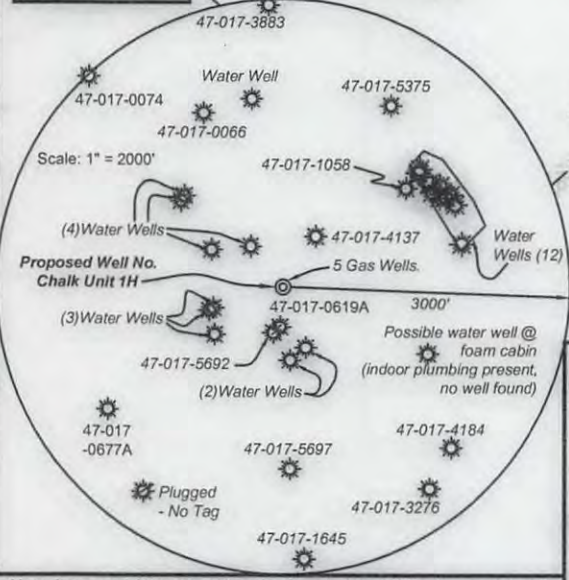
Notes:  
West Virginia Coordinate System of 1927, North Zone based upon Differential GPS Measurements.  
Well No. Chalk Unit 1H Top Hole Coordinates are  
N: 302,230.22' Latitude: 39°19'20.72"  
E: 1,630,421.18' Longitude: 80°48'23.07"  
Bottom Hole coordinates are  
N: 294,265.10' Latitude: 39°18'02.61"  
E: 1,634,657.16' Longitude: 80°47'27.71"  
UTM Zone 17, NAD 1983  
Top Hole Coordinates Bottom Hole Coordinates  
N: 4,352,584.224m N: 4,350,179.202m  
E: 516,701.993m E: 518,032.965m  
Plat orientation and corner and well references are based upon the grid north meridian.  
Well location references are based upon the magnetic meridian.

Notes:  
Well No. Chalk Unit 1H UTM Zone 17, NAD 1927  
Top Hole Coordinates Bottom Hole Coordinates  
N: 14,279,388.75' N: 14,271,498.18'  
E: 1,695,165.79' E: 1,699,532.51'  
Point of Entry Coordinates  
N: 14,279,641.08'  
E: 1,696,176.03'

Legend

- Proposed gas well
- Found corner, as noted
- Existing Well, as noted
- Creek or Drain
- Existing Road
- Surface boundary (approx.)
- Interior surface tracts (approx.)

(-•-) Denotes Location of Well on United States Topographic Maps



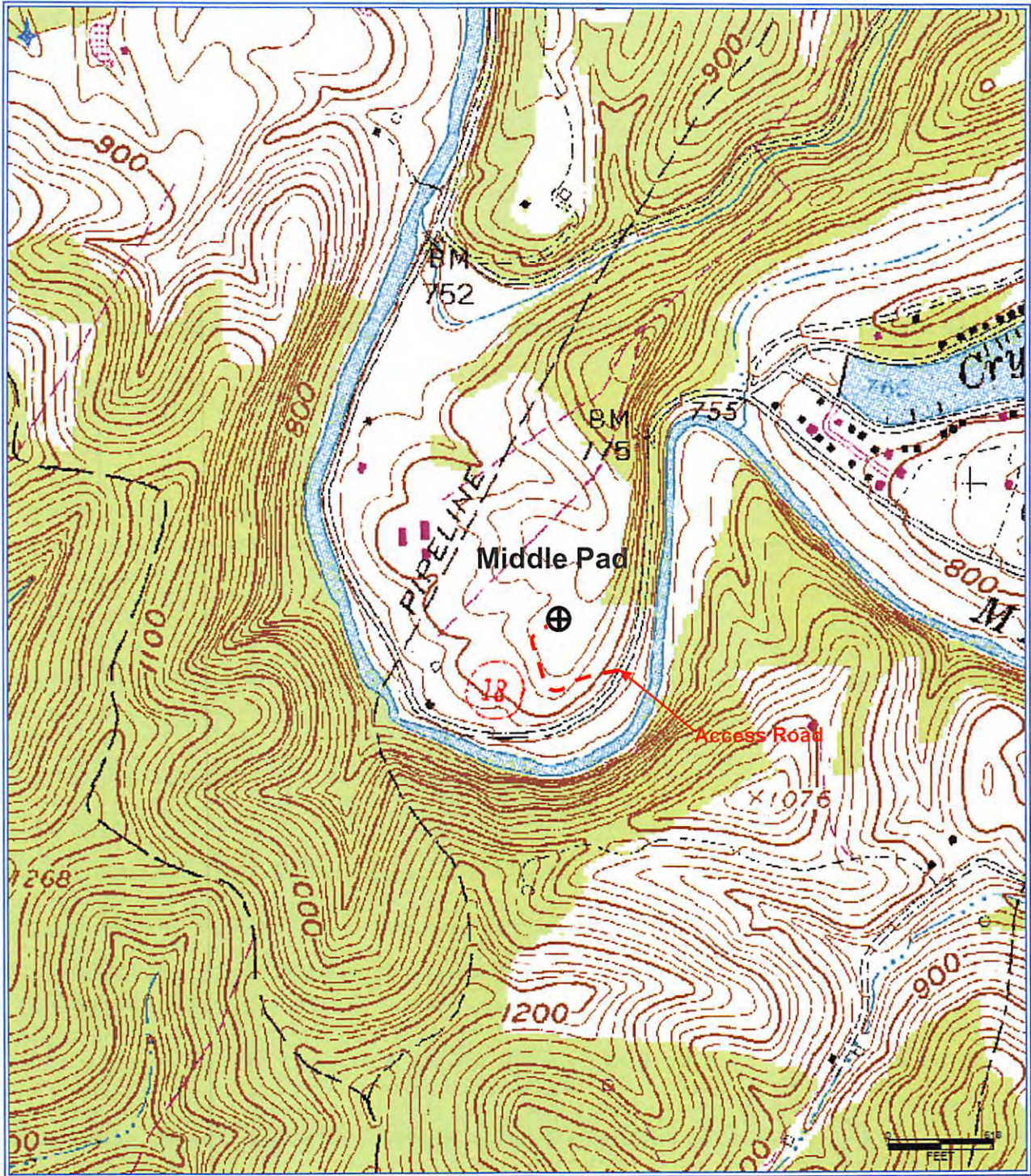
FILE NO: 237-30-WU-14  
DRAWING NO: 237-14 Chalk 1H Plat  
SCALE: 1" = 1200'  
MINIMUM DEGREE OF ACCURACY: Submeter  
PROVEN SOURCE OF ELEVATION: CORS, Marietta, OH

STATE OF WEST VIRGINIA  
DEPARTMENT OF ENVIRONMENTAL PROTECTION  
OIL AND GAS DIVISION

DATE: September 6 20 16  
Operator's Well No. Chalk Unit 1H  
API WELL NO  
47 - 017 - 06918  
STATE COUNTY PERMIT

WELL TYPE:  OIL  GAS  LIQUID INJECTION  WASTE DISPOSAL  
(IF GAS) PRODUCTION:  STORAGE  DEEP  SHALLOW  
LOCATION: ELEVATION: Existing Grade - 848' Proposed Grade - 843' WATERSHED: Headwaters Middle Island Creek QUADRANGLE: West Union  
DISTRICT: West Union COUNTY: Doddridge  
SURFACE OWNER: William Randall Lynch & Dixie Craig ROYALTY OWNER: William Randall Lynch & Dixie Craig; Joseph Freeman, et ux; Ida F. Ford (2) LEASE NO: ACREAGE: 50; 420; 102.85  
PROPOSED WORK:  DRILL  CONVERT  DRILL DEEPER  FRACTURE OR STIMULATE  PLUG OFF OLD FORMATION  
 PERFORATE NEW FORMATION  OTHER PHYSICAL CHANGE IN WELL (SPECIFY) 6,600' TVD  
 PLUG AND ABANDON  CLEAN OUT AND REPLUG TARGET FORMATION: Marcellus Shale ESTIMATED DEPTH: 16,900' MD

WELL OPERATOR: Antero Resources Corporation DESIGNATED AGENT: Dianna Stammer - CT Corporation System  
ADDRESS: 1615 Wynkoop Street ADDRESS: 5400 D Big Tyler Road  
Denver, CO 80202 Charleston, WV 25313



**Antero Resources Corporation**  
Appalachian Basin  
Chalk Unit 1H  
Doddridge County  
Quadrangle: West Union  
Watershed: Middle Island Creek  
District: West Union  
Date: 2-24-2017

RECEIVED  
Office of Oil and Gas  
MAR 06 2017  
WV Department of  
Environmental Protection