



Where energy meets innovation.

API #47-017-06768  
Actual Wellpath Report  
OXF-155 516483 AWP Proj: 9969'  
Page 1 of 10



REFERENCE WELLPATH IDENTIFICATION			
Operator	EQT	Slot	Slot 516483
Area	Doddridge Co., WV	Well	OXF-155 516483
Field	Doddridge	Wellbore	OXF-155 516483 AWB
Facility	OXF-155 Pad		

REPORT SETUP INFORMATION			
Projection System	NAD27 / Lambert West Virginia SP, Northern Zone (4701), US feet	Software System	WellArchitect® 5.0
North Reference	Grid	User	Edsaryar
Scale	0.999966	Report Generated	11/Jul/2017 at 22:36
Convergence at slot	0.84° West	Database/Source file	WA_MPL_EASTERNUS_Defn/OXF-155_516483_AWP_Proj_9969_.xml

WELLPATH LOCATION						
	Local coordinates		Grid coordinates		Geographic coordinates	
	North[ft]	East[ft]	Easting[US ft]	Northing[US ft]	Latitude	Longitude
Slot Location	88.86	14.13	1628852.25	262624.13	39°12'49.065"N	80°48'35.683"W
Facility Reference Pt			1628838.12	262535.27	39°12'48.184"N	80°48'35.846"W
Field Reference Pt			0.00	0.00	38°17'12.460"N	86°28'23.077"W

WELLPATH DATUM			
Calculation method	Minimum curvature	Savanna 655 (RKB) to Facility Vertical Datum	1215.00ft
Horizontal Reference Pt	Slot	Savanna 655 (RKB) to Mean Sea Level	1215.00ft
Vertical Reference Pt	Savanna 655 (RKB)	Savanna 655 (RKB) to Mud Line at Slot (Slot 516483)	16.00ft
MD Reference Pt	Savanna 655 (RKB)	Section Origin	N 0.00, E 0.00 ft
Field Vertical Reference	Mean Sea Level	Section Azimuth	23.71°

RECEIVED  
Office of Oil and Gas  
JUN 22 2018  
WV Department of  
Environmental Protection

**Actual Wellpath Report**  
OXF-155 516483 AWP Proj: 9969'



Operator	Area	Field	Facility
EQT	Doddridge Co., WV	Doddridge	OXF-155 Pad
Slot 516483	Well	Wellbore	OXF-155 516483 AWB

**REFERENCE WELLPATH IDENTIFICATION**

MD	Inclination	Azimuth	TVD	TVSS	Vert Sect	North	East	DLS	Build Rate	Turn Rate	Comments
0.00	1.1	121.290	16.00	-1199.00	0.00	0.00	0.00	0.00	0.00	0.00	
103.00	0.110	121.290	103.00	-1112.00	-0.01	-0.04	0.07	0.13	0.13	139.41	
203.00	0.130	128.970	203.00	-1012.00	-0.05	-0.16	0.24	0.03	0.02	7.68	
303.00	0.090	163.710	303.00	-912.00	-0.14	-0.31	0.35	0.08	-0.04	34.74	
403.00	0.120	154.600	403.00	-812.00	-0.27	-0.48	0.42	0.03	0.03	-9.11	
503.00	0.080	151.490	503.00	-712.00	-0.38	-0.64	0.50	0.04	-0.04	-3.11	
603.00	0.150	146.750	603.00	-612.00	-0.50	-0.81	0.60	0.07	0.07	-4.74	
703.00	0.250	134.300	703.00	-512.00	-0.65	-1.07	0.83	0.11	0.10	-12.45	
803.00	0.290	132.560	803.00	-412.00	-0.80	-1.39	1.17	0.04	0.04	-1.74	
903.00	0.280	129.520	903.00	-312.00	-0.95	-1.72	1.55	0.02	-0.01	-3.04	
1003.00	0.540	124.380	1002.99	-212.01	-1.11	-2.14	2.12	0.26	0.26	-5.14	
1103.00	0.560	122.330	1102.99	-112.01	-1.27	-2.67	2.93	0.03	0.02	-2.05	
1203.00	0.590	123.910	1202.98	-12.02	-1.43	-3.22	3.77	0.03	0.03	1.58	
1303.00	0.710	132.050	1302.98	-1.72	-1.72	-3.92	4.65	0.15	0.12	8.14	
1403.00	0.810	137.680	1402.97	-1.87	-2.20	-4.66	5.59	0.12	0.10	5.63	
1503.00	0.770	137.730	1502.96	-2.76	-2.76	-5.88	6.52	0.04	-0.04	0.05	
1603.00	0.660	128.810	1602.95	-3.18	-3.18	-6.73	7.41	0.16	-0.12	-8.92	
1703.00	0.590	123.590	1702.95	-4.87	-3.42	-7.37	8.28	0.08	-0.06	-5.22	
1803.00	0.330	103.440	1802.94	-5.87	-3.45	-7.72	8.99	0.30	-0.26	-20.16	
1903.00	0.360	106.240	1902.94	-7.88	-3.36	-7.88	9.57	0.03	0.03	2.80	
2003.00	0.330	114.450	2002.94	-8.77	-3.33	-8.08	10.14	0.06	-0.03	8.21	
2103.00	0.320	116.370	2102.94	-8.87	-3.34	-8.33	10.65	0.01	-0.01	1.92	
2203.00	0.290	113.510	2202.94	-8.55	-3.35	-8.55	11.13	0.03	-0.03	-2.86	
2303.00	0.240	112.270	2302.93	-8.73	-3.35	-8.73	11.56	0.05	-0.05	-1.24	
2403.00	0.200	110.560	2402.93	-8.87	-3.33	-8.87	11.92	0.04	-0.04	-1.71	
2503.00	0.190	114.160	2502.93	-9.00	-3.32	-9.00	12.23	0.02	-0.01	3.60	
2603.00	0.240	101.770	2602.93	-9.11	-3.28	-9.11	12.59	0.07	0.05	-12.39	
2703.00	0.390	89.780	2702.93	-9.15	-3.10	-9.15	13.13	0.16	0.15	-11.99	
2745.00	0.500	93.720	2744.93	-9.17	-2.98	-9.17	13.46	0.27	0.26	9.38	Syro Tie In=2745 MD

RECEIVED  
Office of Oil and Gas  
JUN 22 2018  
WV Department of  
Environmental Protection





Where energy meets innovation.

# Actual Wellpath Report

OXF-155 516483 AWP Proj: 9969'

Page 3 of 10



REFERENCE WELLPATH IDENTIFICATION			
Operator	EQT	Slot	Slot 516483
Area	Doddridge Co., WV	Well	OXF-155 516483
Field	Doddridge	Wellbore	OXF-155 516483 AWB
Facility	OXF-155 Pad		

WELLPATH DATA (189 stations)												
MD (ft)	Inclination [°]	Azimuth [°]	TVD (ft)	TVDSS (ft)	Vert Sect (ft)	North (ft)	East (ft)	DLS [°/100ft]	Build Rate [°/100ft]	Turn Rate [°/100ft]	Comments	
2783.00	0.720	36.240	2782.93	1567.93	-2.69	-8.98	13.76	1.63	0.58	-151.26	KOP 1=2783' MD	
2906.00	3.500	12.450	2905.83	1690.83	1.75	-4.69	15.03	2.32	2.26	-19.34		
2949.00	5.110	13.640	2948.71	1733.71	4.92	-1.55	15.77	3.75	3.74	2.77		
2991.00	6.630	16.870	2990.49	1775.49	9.17	2.59	16.91	3.70	3.62	7.69		
3034.00	7.450	18.750	3033.17	1818.17	14.41	7.60	18.53	1.98	1.91	4.37		
3077.00	7.480	24.950	3075.80	1860.80	19.99	12.78	20.60	1.87	0.07	14.42		
3120.00	7.630	33.520	3118.43	1903.43	25.60	17.70	23.36	2.64	0.35	19.93		
3164.00	7.960	43.480	3162.02	1947.02	31.34	22.34	27.07	3.16	0.75	22.64		
3208.00	8.560	54.180	3205.57	1990.57	37.03	26.47	31.82	3.74	1.36	24.32		
3251.00	8.990	64.390	3248.07	2033.07	42.34	29.80	37.45	3.75	1.00	23.74		
3295.00	9.500	73.690	3291.50	2076.50	47.28	32.30	44.03	3.58	1.16	21.14		
3339.00	9.770	82.090	3334.88	2119.88	51.57	33.84	51.22	3.25	0.61	19.09		
3382.00	10.590	87.840	3377.21	2162.21	55.21	34.49	58.78	3.03	1.91	13.37		
3426.00	11.100	87.370	3420.42	2205.42	58.85	34.83	67.05	1.18	1.16	-1.07		
3447.00	11.110	87.010	3441.03	2226.03	60.66	35.03	71.09	0.33	0.05	-1.71		
3536.00	10.310	88.030	3528.48	2313.48	67.96	35.75	87.61	0.92	-0.90	1.15		
3580.00	11.400	94.570	3571.69	2356.69	71.10	35.54	95.88	3.73	2.48	14.86		
3623.00	13.010	99.060	3613.72	2398.72	73.71	34.44	104.90	4.34	3.74	10.44		
3667.00	14.630	102.510	3656.44	2441.44	76.05	32.46	115.22	4.13	3.68	7.84		
3711.00	16.500	103.590	3698.83	2483.83	78.22	29.79	126.71	4.30	4.25	2.45		
3754.00	18.800	103.290	3739.80	2524.80	80.55	26.76	139.39	5.35	5.35	-0.70		
3798.00	22.100	103.060	3781.02	2566.02	83.36	23.26	154.36	7.50	7.50	-0.52		
3842.00	25.290	104.530	3821.31	2606.31	86.39	19.03	171.53	7.37	7.25	3.34		
3885.00	28.030	107.070	3859.73	2644.73	89.03	13.76	190.08	6.90	6.37	5.91		
3927.00	30.540	111.940	3896.37	2681.37	90.50	6.87	209.42	8.24	5.98	11.60		
3970.00	33.730	115.440	3932.78	2717.78	90.48	-2.34	230.34	8.59	7.42	8.14		
4013.00	38.090	117.130	3967.60	2752.60	89.32	-13.53	252.94	10.40	10.14	3.93		
4056.00	42.170	119.810	4000.47	2785.47	87.00	-26.76	277.28	10.30	9.49	6.23		
4098.00	44.480	119.970	4031.02	2816.02	83.89	-41.12	302.26	5.51	5.50	0.38		
4140.00	43.820	119.000	4061.16	2846.16	80.95	-55.52	327.72	2.25	-1.57	-2.31		

RECEIVED  
Office of Oil and Gas  
JUN 22 2018  
WV Department of  
Environmental Protection

07/20/2018



Where energy meets innovation.

# Actual Wellpath Report

OXF-155 516483 AWP Proj: 9969'

Page 4 of 10



REFERENCE WELLPATH IDENTIFICATION			
Operator	EQT	Slot	Slot 516483
Area	Doddridge Co., WV	Well	OXF-155 516483
Field	Doddridge	Wellbore	OXF-155 516483 AWB
Facility	OXF-155 Pad		

WELLPATH DATA (189 stations)											
MD (ft)	Inclination (°)	Azimuth (°)	TVD (ft)	TVDSS (ft)	Vert Sect (ft)	North (ft)	East (ft)	DLS (°/100ft)	Build Rate (°/100ft)	Turn Rate (°/100ft)	Comments
4184.00	43.270	118.150	4093.05	2878.05	78.38	-70.02	354.34	1.83	-1.25	-1.93	
4226.00	42.430	117.630	4123.84	2908.84	76.29	-83.38	379.59	2.17	-2.00	-1.24	
4268.00	42.690	118.600	4154.78	2939.78	74.11	-96.76	404.64	1.68	0.62	2.31	
4312.00	42.380	118.440	4187.20	2972.20	71.62	-110.97	430.78	0.75	-0.70	-0.36	
4355.00	43.870	118.310	4218.59	3003.59	69.23	-124.94	456.64	3.47	3.47	-0.30	
4398.00	44.190	117.610	4249.50	3034.50	67.01	-138.95	483.04	1.35	0.74	-1.63	
4441.00	43.490	116.300	4280.52	3065.52	65.33	-152.45	509.58	2.67	-1.63	-3.05	
4485.00	42.610	115.930	4312.67	3097.67	64.06	-165.67	536.55	2.08	-2.00	-0.84	
4529.00	41.400	117.840	4345.37	3130.37	62.44	-178.98	562.81	4.00	-2.75	4.34	
4571.00	40.530	120.690	4377.08	3162.08	59.78	-192.43	586.83	4.91	-2.07	6.79	
4614.00	40.070	122.240	4409.88	3194.88	56.03	-206.95	610.55	2.57	-1.07	3.60	
4656.00	39.200	122.150	4442.22	3227.22	52.08	-221.22	633.23	2.08	-2.07	-0.21	
4698.00	38.830	121.420	4474.86	3259.86	48.36	-235.15	655.70	1.40	-0.88	-1.74	
4742.00	38.690	119.310	4509.17	3294.17	45.17	-249.07	679.46	3.02	-0.32	-4.80	
4786.00	39.000	117.510	4543.44	3328.44	42.91	-262.20	703.74	2.66	0.70	-4.09	
4830.00	40.160	116.140	4577.35	3362.35	41.39	-274.85	728.75	3.30	2.64	-3.11	
4873.00	40.420	115.230	4610.15	3395.15	40.43	-286.90	753.81	1.50	0.60	-2.12	
4917.00	39.650	114.360	4643.84	3428.84	39.89	-298.77	779.51	2.16	-1.75	-1.98	
4959.00	39.710	114.650	4676.16	3461.16	39.52	-309.89	803.91	0.46	0.14	0.69	
5001.00	41.070	117.050	4708.15	3493.15	38.50	-321.76	828.39	4.92	3.24	5.71	
5045.00	42.040	119.010	4741.08	3526.08	36.30	-335.48	854.15	3.69	2.20	4.45	
5088.00	41.790	120.600	4773.08	3558.08	33.25	-349.76	879.07	2.54	-0.58	3.70	
5132.00	41.000	119.660	4806.09	3591.09	29.99	-364.36	904.24	2.28	-1.80	-2.14	
5176.00	40.030	119.710	4839.54	3624.54	27.02	-378.52	929.07	2.21	-2.20	0.11	
5219.00	40.770	119.790	4872.28	3657.28	24.08	-392.35	953.26	1.73	1.72	0.19	
5263.00	42.760	120.040	4905.10	3690.10	20.92	-406.96	978.67	4.54	4.52	0.57	
5307.00	42.960	118.700	4937.35	3722.35	17.96	-421.64	1004.75	2.12	0.45	-3.05	
5350.00	43.500	117.110	4968.69	3753.69	15.81	-435.42	1030.77	2.83	1.26	-3.70	
5394.00	43.010	115.570	5000.73	3785.73	14.43	-448.80	1057.79	2.64	-1.11	-3.50	
5438.00	42.190	114.860	5033.12	3818.12	13.64	-461.49	1084.73	2.16	-1.86	-1.61	





**Actual Wellpath Report**  
 OXF-155 516483 AWP Proj.: 9969  
 Page 5 of 10



Where energy meets innovation

REFERENCE WELLPATH IDENTIFICATION			
Operator	EQT	Slot	Slot 516483
Area	Doddridge Co., WV	Well	OXF-155 516483
Field	Doddridge	Wellbore	OXF-155 516483 AWB
Facility	OXF-155 Pad		

WELLPATH DATA (189 stations)												
MD	Inclination	Azimuth	TVD	TVSS	Vert Sect	North	East	DLS	Build Rate	Turn Rate	Comments	
5481.00	114.800	5065.21	3850.21	13.08	-473.51	1110.71	2.16	-2.16	-0.14			
5524.00	116.650	5087.53	3882.53	12.09	-485.82	1136.26	2.84	0.05	4.30			
5566.00	117.730	5129.17	3914.17	10.41	-498.44	1160.83	1.85	-0.74	2.57			
5610.00	116.750	5162.57	3947.57	8.65	-511.55	1186.29	2.19	-1.64	-2.23			
5654.00	115.800	5196.39	3981.39	7.38	-524.02	1211.53	2.63	-2.11	-2.15			
5697.00	117.050	5229.50	4014.50	6.08	-536.22	1236.09	2.35	1.44	2.91			
5746.00	118.430	5267.01	4052.01	3.87	-550.90	1264.00	1.87	0.45	2.82			
5777.00	119.350	5290.60	4075.60	2.05	-560.62	1281.61	2.71	1.90	2.97			
5839.00	117.680	5337.95	4122.35	-1.36	-580.05	1317.39	2.04	1.02	-2.69			
5900.00	116.500	5383.05	4168.05	-3.74	-598.45	1353.37	1.33	0.34	-1.93			
5961.00	115.620	5428.69	4213.69	-5.40	-616.23	1389.72	0.96	-0.08	-1.44			
6022.00	115.350	5474.34	4259.34	-6.65	-633.64	1426.25	0.30	0.05	-0.44			
6084.00	115.080	5520.72	4305.72	-7.73	-651.17	1463.47	0.29	0.02	-0.44			
6146.00	115.490	5567.07	4352.07	-8.87	-668.76	1500.70	0.45	0.10	0.66			
6207.00	116.360	5612.69	4397.69	-10.43	-686.46	1537.12	0.96	-0.13	1.43			
6269.00	116.520	5659.09	4444.09	-12.39	-704.77	1573.94	0.18	-0.05	0.26			
6332.00	117.570	5706.29	4491.29	-14.82	-723.75	1611.11	1.11	-0.14	1.67			
6393.00	118.560	5752.01	4537.01	-17.88	-742.74	1646.74	1.07	0.03	1.62			
6455.00	118.510	5798.45	4583.45	-21.34	-762.36	1682.83	0.11	0.10	-0.08			KOP 2=6455' MD
6487.00	118.840	5822.55	4607.55	-22.61	-771.98	1701.55	5.98	-2.38	-8.34			
6518.00	112.400	5846.42	4631.42	-22.77	-780.07	1719.59	10.05	-7.13	-11.10			
6549.00	107.880	5871.08	4656.08	-21.62	-786.56	1737.22	11.87	-7.94	-14.58			
6580.00	102.510	5896.62	4681.62	-19.05	-791.19	1754.14	14.12	-10.16	-17.32			
6642.00	91.710	5950.02	4735.02	-9.93	-794.93	1785.36	7.92	-3.32	-14.58			
6672.00	87.740	5976.41	4761.41	-4.14	-794.87	1799.61	7.71	-4.47	-13.23			
6703.00	85.140	6004.06	4789.06	2.27	-794.01	1813.61	6.54	-5.32	-8.39			
6734.00	82.530	6032.08	4817.08	8.88	-792.59	1826.80	5.90	-4.68	-8.42			
6765.00	80.920	6060.36	4845.36	15.60	-790.77	1839.37	3.50	-2.77	-5.19			
6797.00	78.080	6089.64	4874.64	22.85	-788.42	1852.05	3.58	0.09	-8.88			

RECEIVED  
 Office of Oil and Gas  
 JUN 22 2018  
 WV Department of  
 Environmental Protection



Where energy meets innovation.

# Actual Wellpath Report

OXF-155 516483 AWP Proj: 9969'

Page 6 of 10



REFERENCE WELLPATH IDENTIFICATION			
Operator	EQT	Slot	Slot 516483
Area	Doddridge Co., WV	Well	OXF-155 516483
Field	Doddridge	Wellbore	OXF-155 516483 AWB
Facility	OXF-155 Pad		

WELLPATH DATA (189 stations)												
MD [ft]	Inclination [°]	Azimuth [°]	TVD [ft]	TVDSS [ft]	Vert Sect [ft]	North [ft]	East [ft]	DLS [°/100ft]	Build Rate [°/100ft]	Turn Rate [°/100ft]	Comments	
6828.00	24.810	73.480	6117.90	4902.90	30.70	-785.28	1864.40	6.93	3.29	-14.84		
6859.00	25.590	64.740	6145.96	4930.96	39.95	-780.57	1876.70	12.25	2.52	-28.19		
6890.00	25.670	55.780	6173.92	4958.92	50.70	-773.93	1888.31	12.49	0.26	-28.90		
6921.00	25.780	45.870	6201.86	4986.86	62.63	-765.46	1898.71	13.87	0.35	-31.97		
6952.00	26.910	38.220	6229.64	5014.64	75.67	-755.25	1907.89	11.53	3.65	-24.68		
6983.00	29.010	32.730	6257.03	5042.03	89.89	-743.41	1916.29	10.71	6.77	-17.71		
7014.00	31.620	28.080	6283.79	5068.79	105.42	-729.92	1924.19	11.32	8.42	-15.00		
7046.00	34.170	23.250	6310.66	5095.66	122.78	-714.25	1931.68	11.43	7.97	-15.09		
7077.00	36.240	17.140	6336.00	5121.00	140.60	-697.49	1937.82	13.17	6.68	-19.71		
7108.00	38.170	11.370	6360.70	5145.70	159.06	-679.34	1942.41	12.86	6.23	-18.61		
7139.00	39.750	6.600	6384.81	5169.81	177.90	-660.09	1945.44	10.93	5.10	-15.39		
7170.00	42.370	3.550	6408.18	5193.18	197.18	-639.82	1947.23	10.64	8.45	-9.84		
7201.00	45.210	0.660	6430.56	5215.56	217.12	-618.39	1948.00	11.20	9.16	-9.32		
7231.00	48.630	358.750	6451.05	5236.05	237.13	-596.48	1947.88	12.31	11.40	-6.37		
7262.00	51.840	357.130	6470.88	5255.88	258.58	-572.67	1947.02	11.11	10.35	-5.23		
7294.00	55.060	353.710	6489.93	5274.93	281.20	-547.06	1944.95	13.23	10.06	-10.69		
7325.00	57.680	349.780	6507.11	5292.11	303.08	-521.53	1941.23	13.52	8.45	-12.68		
7356.00	60.160	346.790	6523.11	5308.11	324.70	-495.54	1935.83	11.50	8.00	-9.65		
7386.00	63.060	345.530	6537.37	5322.37	345.62	-469.92	1929.52	10.35	9.67	-4.20		
7417.00	66.050	344.640	6550.69	5335.69	367.49	-442.87	1922.31	9.99	9.65	-2.87		
7448.00	68.490	344.530	6562.67	5347.67	389.67	-415.31	1914.71	7.88	7.87	-0.35		
7478.00	68.780	343.860	6573.60	5358.60	411.22	-388.43	1907.10	2.29	0.97	-2.23		
7509.00	68.880	343.410	6584.79	5369.79	433.34	-360.69	1898.95	1.39	0.32	-1.45		
7540.00	69.840	342.580	6595.72	5380.72	455.33	-332.95	1890.47	3.98	3.10	-2.68		
7570.00	72.250	341.190	6605.46	5390.46	476.47	-305.99	1881.65	9.15	8.03	-4.63		
7601.00	75.570	339.650	6614.06	5399.06	498.14	-277.93	1871.66	11.72	10.71	-4.97		
7632.00	78.700	338.540	6620.96	5405.96	519.65	-249.70	1860.88	10.68	10.10	-3.58		
7663.00	81.140	338.190	6626.38	5411.38	541.10	-221.33	1849.63	7.95	7.87	-1.13		
7695.00	83.000	337.950	6630.80	5415.80	563.26	-191.93	1837.79	5.86	5.81	-0.75		
7726.00	84.510	337.850	6634.17	5419.17	584.74	-163.38	1826.20	4.88	4.87	-0.32		

RECEIVED  
Office of Oil and Gas  
JUN 22 2018  
WV Department of  
Environmental Protection

07/20/2018





Where energy meets innovation.

# Actual Wellpath Report

OXF-155 516483 AWP Proj: 9969'

Page 7 of 10



REFERENCE WELLPATH IDENTIFICATION			
Operator	EQT	Slot	Slot 516483
Area	Doddridge Co., WV	Well	OXF-155 516483
Field	Doddridge	Wellbore	OXF-155 516483 AWB
Facility	OXF-155 Pad		

WELLPATH DATA (189 stations)											
MD (ft)	Inclination (°)	Azimuth (°)	TVD (ft)	TVDSS (ft)	Vert Sect (ft)	North (ft)	East (ft)	DLS (°/100ft)	Build Rate (°/100ft)	Turn Rate (°/100ft)	Comments
7757.00	85.780	337.440	6636.79	5421.79	606.17	-134.81	1814.45	4.30	4.10	-1.32	
7789.00	87.010	335.660	6638.80	5423.80	627.88	-105.52	1801.74	6.75	3.84	-5.56	
7821.00	88.120	334.070	6640.16	5425.16	648.92	-76.58	1788.16	6.06	3.47	-4.97	P=7821' MD / 6640.16' TVD
7883.00	88.090	330.070	6642.22	5427.22	687.37	-21.84	1759.14	6.45	-0.05	-6.45	
7946.00	87.820	326.730	6644.46	5429.46	722.74	31.48	1725.69	6.90	-0.43	-6.89	
8008.00	87.320	326.440	6647.09	5432.09	755.91	82.89	1691.13	1.40	-0.81	1.15	
8071.00	86.830	328.490	6650.31	5435.31	790.87	135.93	1657.30	3.34	-0.78	3.25	
8134.00	86.610	332.230	6653.91	5438.91	828.40	190.59	1626.19	5.94	-0.35	5.94	
8196.00	86.830	333.150	6657.46	5442.46	867.34	245.58	1597.80	1.52	0.35	1.48	
8258.00	87.110	334.040	6660.74	5445.74	907.04	301.04	1570.26	1.50	0.45	1.44	
8320.00	86.430	334.690	6664.23	5449.23	947.37	356.85	1543.48	1.52	-1.10	1.05	
8382.00	86.210	336.380	6668.21	5453.21	988.63	413.16	1517.86	2.74	-0.35	2.73	
8444.00	87.720	337.050	6671.49	5456.49	1030.86	470.03	1493.39	2.66	2.44	1.08	
8505.00	87.570	334.370	6674.00	5459.00	1071.64	525.58	1468.32	4.40	-0.25	-4.39	
8567.00	87.630	331.920	6676.60	5461.60	1110.98	580.84	1440.34	3.95	0.10	-3.95	
8628.00	87.570	331.540	6679.15	5464.15	1148.52	634.51	1411.47	0.63	-0.10	-0.62	
8690.00	87.660	330.820	6681.73	5466.73	1186.20	688.79	1381.61	1.17	0.15	-1.16	
8751.00	87.540	331.920	6684.29	5469.29	1223.44	742.28	1352.41	1.81	-0.20	1.80	
8796.00	88.060	332.740	6686.02	5471.02	1251.51	782.11	1331.52	2.16	1.16	1.82	
8858.00	88.520	333.290	6687.87	5472.87	1290.76	837.33	1303.40	1.16	0.74	0.89	
8921.00	88.490	331.420	6689.51	5474.51	1330.09	893.12	1274.18	2.97	-0.05	-2.97	
8984.00	88.430	330.270	6691.20	5476.20	1368.11	948.11	1243.50	1.83	-0.10	-1.83	
9048.00	87.910	330.640	6693.25	5478.25	1406.38	1003.76	1211.96	1.00	-0.81	0.58	
9111.00	87.880	330.990	6695.56	5480.56	1444.36	1058.73	1181.26	0.56	-0.05	0.56	
9174.00	87.820	329.470	6697.92	5482.92	1481.82	1113.37	1150.00	2.41	-0.10	-2.41	
9237.00	87.820	329.300	6700.32	5485.32	1518.54	1167.55	1117.94	0.27	0.00	-0.27	
9300.00	87.940	333.950	6702.65	5487.65	1557.21	1222.93	1088.03	7.38	0.19	7.38	
9363.00	88.280	335.760	6704.73	5489.73	1598.64	1279.93	1061.28	2.92	0.54	2.87	
9425.00	88.490	335.030	6706.48	5491.48	1639.86	1336.27	1035.47	1.22	0.34	-1.18	
9488.00	88.490	333.640	6708.14	5493.14	1680.88	1393.04	1008.20	2.21	0.00	-2.21	

RECEIVED  
Office of Oil and Gas  
JUN 22 2018  
WV Department of  
Environmental Protection

07/20/2018



Where energy meets innovation.

# Actual Wellpath Report

OXF-155 516483 AWP Proj: 9969'

Page 8 of 10



REFERENCE WELLPATH IDENTIFICATION			
Operator	EQT	Slot	Slot 516483
Area	Doddridge Co., WV	Well	OXF-155 516483
Field	Doddridge	Wellbore	OXF-155 516483 AWB
Facility	OXF-155 Pad		

WELLPATH DATA (189 stations)											
MD [ft]	Inclination [°]	Azimuth [°]	TVD [ft]	TVDSS [ft]	Vert Sect [ft]	North [ft]	East [ft]	DLS Rate [°/100ft]	Build Rate [°/100ft]	Turn Rate [°/100ft]	Comments
9550.00	88.920	333.640	6709.54	5494.54	1720.54	1448.58	980.68	0.69	0.69	0.00	
9613.00	88.950	334.050	6710.71	5495.71	1761.25	1505.12	952.91	0.65	0.05	0.65	
9676.00	88.980	335.460	6711.85	5496.85	1802.61	1562.09	926.05	2.24	0.05	2.24	
9738.00	89.230	335.620	6712.82	5497.82	1843.95	1618.52	900.38	0.48	0.40	0.26	
9801.00	89.110	334.290	6713.73	5498.73	1885.48	1675.59	873.71	2.12	-0.19	-2.11	
9865.00	89.170	335.190	6714.69	5499.69	1927.49	1733.46	846.41	1.41	0.09	1.41	
9928.00	89.230	337.590	6715.57	5500.57	1970.19	1791.18	821.18	3.81	0.10	3.81	
9945.00	89.140	337.890	6715.81	5500.81	1982.00	1806.91	814.74	1.84	-0.53	1.76	Final Survey=9945' MD / 6715.81' TVD
9969.00	89.140	337.890	6716.17	5501.17	1998.73	1829.14	805.71	0.00	0.00	0.00	Projection to TD=9969' MD / 6716.17' TVD, Deepest Point of Well=9969' MD / 6716.17' TVD

HOLE & CASING SECTIONS - Ref Wellbore: OXF-155 516483 AWB Ref Wellpath: OXF-155 516483 AWP Proj: 9969'									
String/Diameter	Start MD [ft]	End MD [ft]	Interval [ft]	Start TVD [ft]	End TVD [ft]	Start N/S [ft]	Start E/W [ft]	End N/S [ft]	End E/W [ft]
20in Conductor	16.00	56.00	40.00	16.00	56.00	0.00	0.00	-0.01	0.02
17.5in Open Hole	56.00	572.00	516.00	56.00	572.00	-0.01	0.02	-0.74	0.56
13.375in Casing Surface	16.00	572.00	556.00	16.00	572.00	0.00	0.00	-0.74	0.56
12.25in Open Hole	572.00	3469.00	2897.00	572.00	3462.62	-0.74	0.56	35.24	75.29
9.625in Casing Intermediate	16.00	3469.00	3453.00	16.00	3462.62	0.00	0.00	35.24	75.29
8.75in Open Hole	3469.00	5768.00	2299.00	3462.62	5283.78	35.24	75.29	-557.75	1276.49
8.5in Open Hole	5768.00	9969.00	4201.00	5283.78	6716.17	-557.75	1276.49	1829.14	805.71
5.5in Casing Production	16.00	9969.00	9953.00	16.00	6716.17	0.00	0.00	1829.14	805.71

RECEIVED  
Office of Oil and Gas  
JUN 22 2018  
WV Department of  
Environmental Protection

07/20/2018





Where energy meets innovation.

# Actual Wellpath Report

OXF-155 516483 AWP Proj: 9969'

Page 9 of 10



REFERENCE WELLPATH IDENTIFICATION			
Operator	EQT	Slot	Slot 516483
Area	Doddridge Co., WV	Well	OXF-155 516483
Field	Doddridge	Wellbore	OXF-155 516483 AWB
Facility	OXF-155 Pad		

TARGETS								
Name	TVD [ft]	North [ft]	East [ft]	Grid East [US ft]	Grid North [US ft]	Latitude	Longitude	Shape
OXF-155 516483 BHL Rev-2	6600.00	1830.87	804.10	1629656.32	264454.93	39°13'07.274"N	80°48'25.806"W	point
OXF-155 516483 LP Rev-2	6600.00	-168.85	1823.00	1630675.19	262455.29	39°12'47.658"N	80°48'12.493"W	point
OXF-155 Hard Line	7000.00	-88.86	-14.13	1628838.12	262535.27	39°12'48.184"N	80°48'35.846"W	polygon

WELLPATH COMPOSITION - Ref Wellbore: OXF-155 516483 AWB Ref Wellpath: OXF-155 516483 AWP Proj: 9969'					
Start MD [ft]	End MD [ft]	Positional Uncertainty Model	Log Name/Comment	Wellbore	
16.00	2745.00	Gyrodata standard - Drop gyro or Multi-shot	01 Gyrodata MS Gyro <12-1/4"> (103'-2745')	OXF-155 516483 AWB	
2745.00	5697.00	OWSG MWD rev2 - Standard	02 SDI MWD <8-3/4"> (2745')(2783'-5697')	OXF-155 516483 AWB	
5697.00	9945.00	BHI AutoTrak Curve (Standard)	03 BHI AT Curve <8-1/2"> (5697')(5746'-9945')	OXF-155 516483 AWB	
9945.00	9969.00	Blind Drilling (std)	Projection to bit	OXF-155 516483 AWB	

RECEIVED  
Office of Oil and Gas  
JUN 22 2018  
WV Department of  
Environmental Protection

07/20/2018



Where energy meets innovation.

# Actual Wellpath Report

OXF-155 516483 AWP Proj: 9969'

Page 10 of 10



REFERENCE WELLPATH IDENTIFICATION			
Operator	EQT	Slot	Slot 516483
Area	Doddridge Co., WV	Well	OXF-155 516483
Field	Doddridge	Wellbore	OXF-155 516483 AWB
Facility	OXF-155 Pad		

WELLPATH COMMENTS				
MD [ft]	Inclination [°]	Azimuth [°]	TVD [ft]	Comment
2745.00	0.500	93.720	2744.93	Gyro Tie In=2745' MD
2783.00	0.720	36.240	2782.93	KOP 1=2783' MD
6455.00	41.520	118.510	5798.45	KOP 2=6455' MD
7821.00	88.120	334.070	6640.16	LP=7821' MD / 6640.16' TVD
9945.00	89.140	337.890	6715.81	Final Survey=9945' MD / 6715.81' TVD
9969.00	89.140	337.890	6716.17	Projection to TD=9969' MD / 6716.17' TVD, Deepest Point of Well=9969' MD / 6716.17' TVD

RECEIVED  
Office of Oil and Gas  
JUN 22 2018  
WV Department of  
Environmental Protection

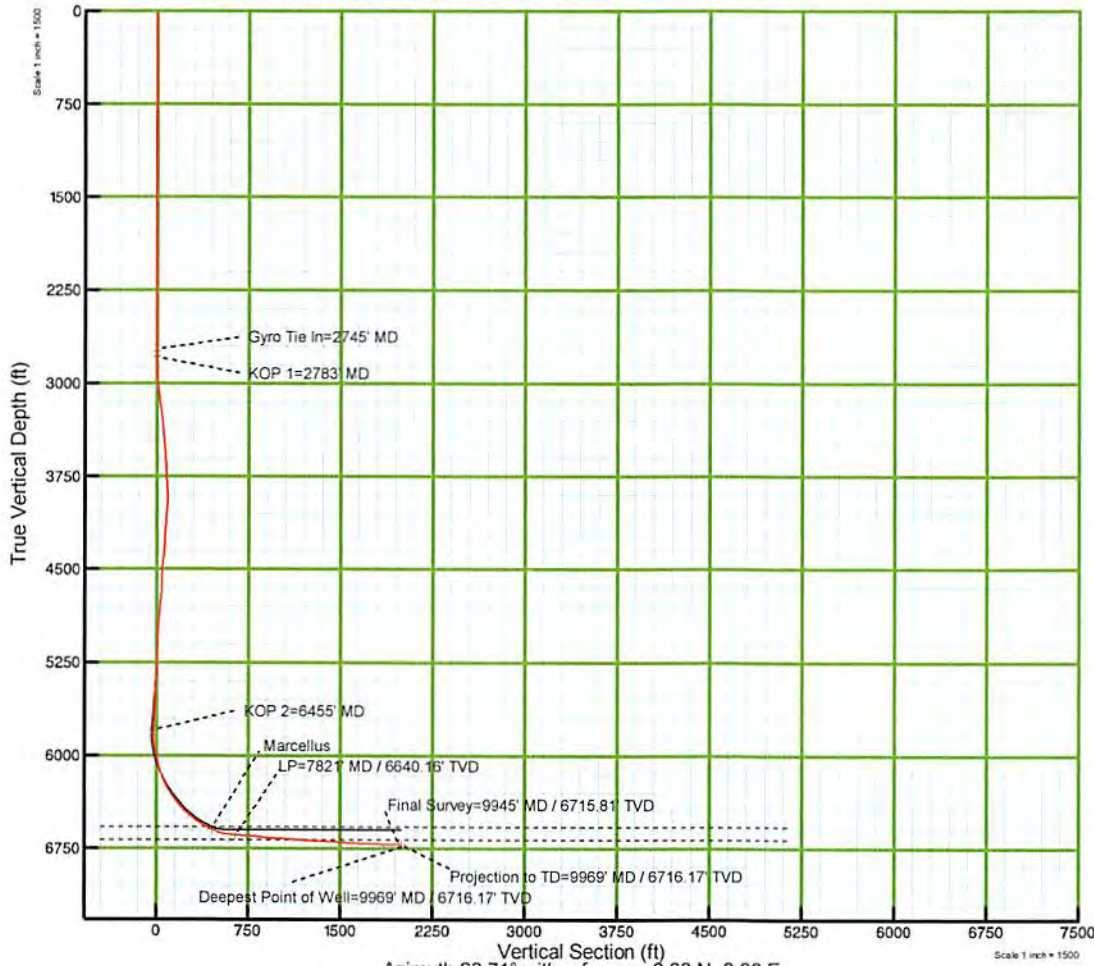
07/20/2018



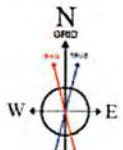
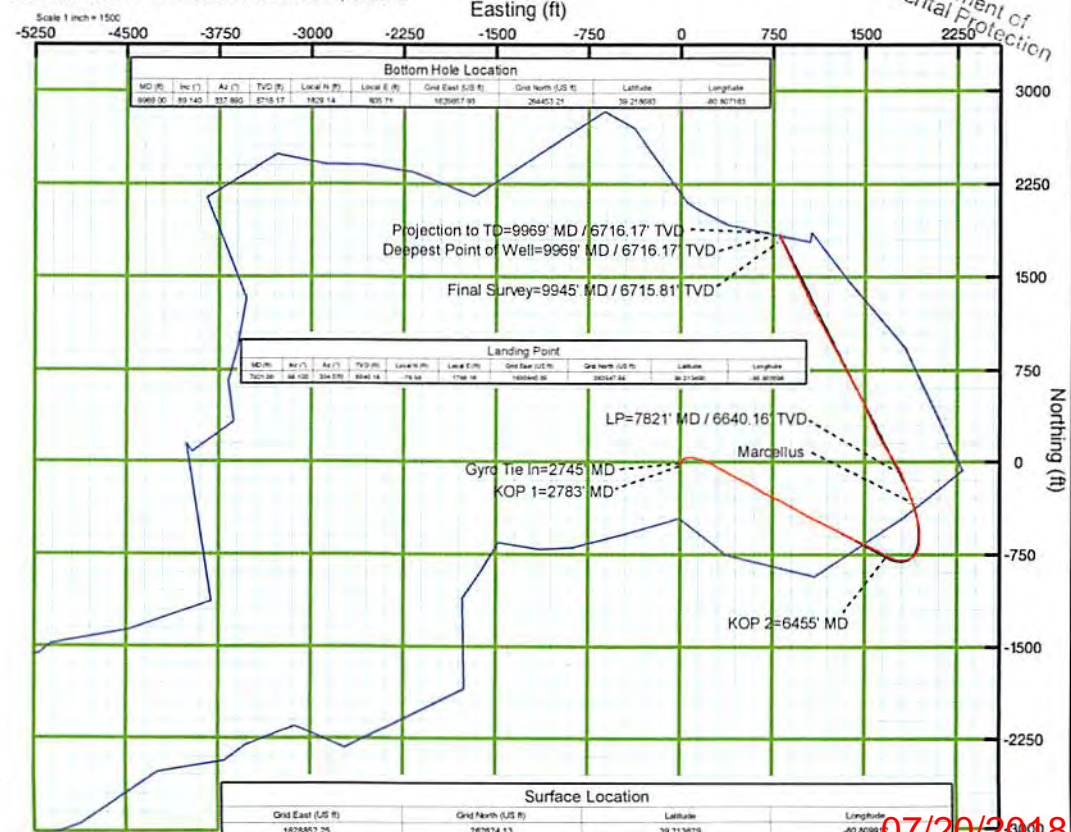
KB Elevation=1215 FT  
Ground Elevation=1199 FT

All measurements were taken from KB Elevation

Project: Doddridge County, WV  
Site: OXF-155  
Well: OXF-155 516483  
Wellbore: Main Wellbore  
Design: As-Drilled Surveys



Azimuth 23.71° with reference 0.00 N, 0.00 E



User specified (HDGM) Dip: 66.49° Field: 52043 nT  
Magnetic North is 7.65 degrees West of True North (at 21Jun2017)  
Grid North is 0.84 degrees West of True North  
To correct azimuth from True to Grid add 0.84 degrees  
To correct azimuth from Magnetic to Grid subtract 6.81 degrees

RECEIVED  
Office of Oil and Gas  
JUN 22 2018  
WV Department of  
Environmental Protection

07/20/2018