

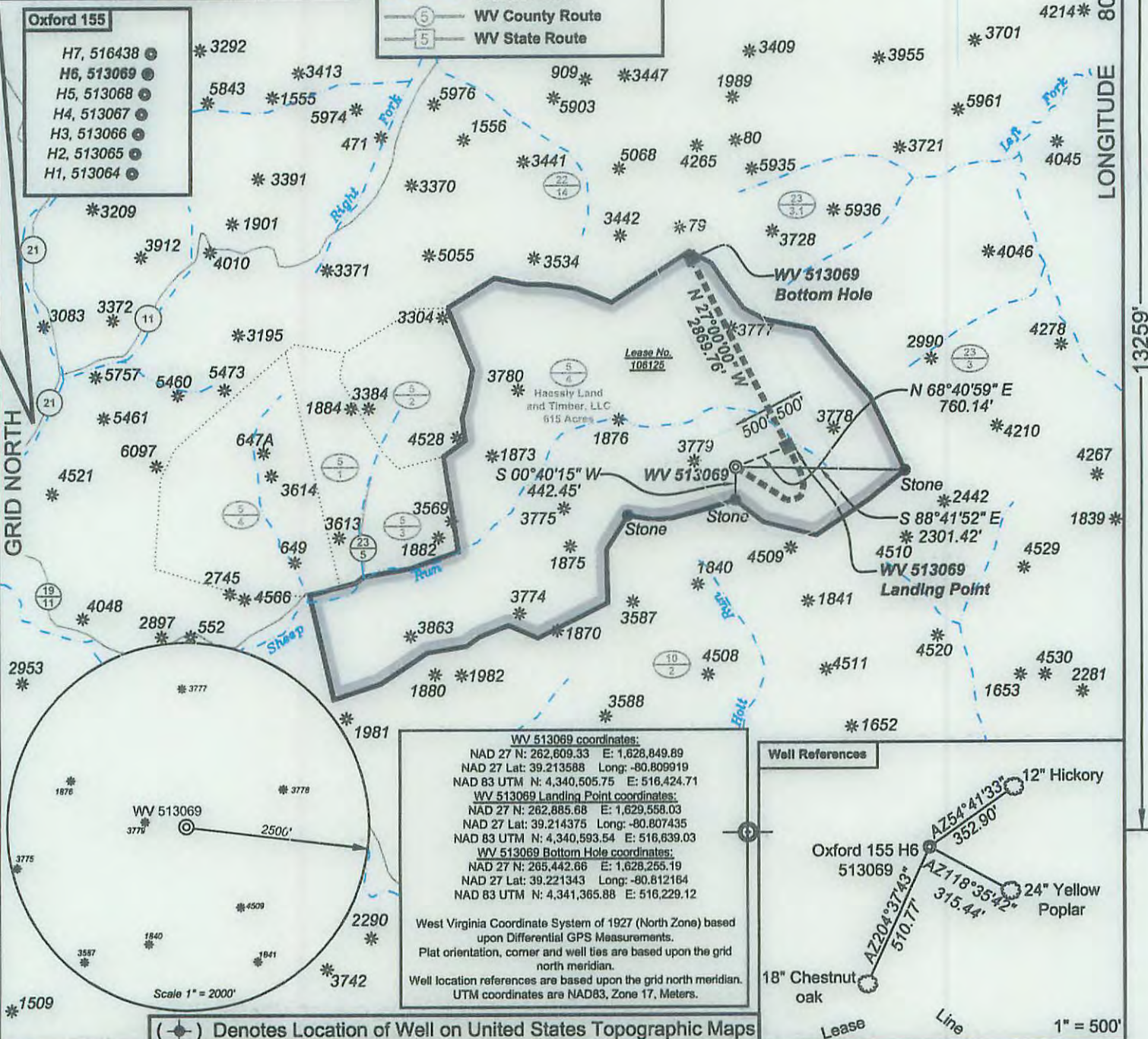
WV 513069
EQT Production Company
Eli Nutter et. ux. Lease
615 Acres

- Proposed Gas Well
- Located Corner, as noted
- Surface Tract Lines
- Reference Line
- Lease Boundary
- Creek or Drain
- WV County Route
- WV State Route

LATITUDE 39 - 15 - 00

LONGITUDE 80 - 47 - 30

- Oxford 155**
- H7, 516438
 - H6, 513069
 - H5, 513068
 - H4, 513067
 - H3, 513066
 - H2, 513065
 - H1, 513064

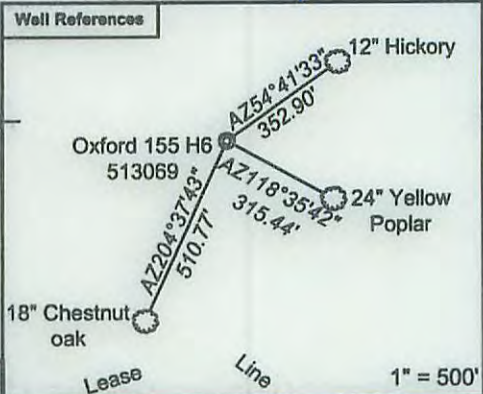


WV 513069 coordinates:
 NAD 27 N: 262,609.33 E: 1,628,849.89
 NAD 27 Lat: 39.213588 Long: -80.809919
 NAD 83 UTM N: 4,340,505.75 E: 516,424.71

WV 513069 Landing Point coordinates:
 NAD 27 N: 262,885.68 E: 1,629,558.03
 NAD 27 Lat: 39.214375 Long: -80.807435
 NAD 83 UTM N: 4,340,593.54 E: 516,639.03

WV 513069 Bottom Hole coordinates:
 NAD 27 N: 265,442.66 E: 1,628,255.19
 NAD 27 Lat: 39.221343 Long: -80.812164
 NAD 83 UTM N: 4,341,365.88 E: 516,229.12

West Virginia Coordinate System of 1927 (North Zone) based upon Differential GPS Measurements.
 Plat orientation, corner and well ties are based upon the grid north meridian.
 Well location references are based upon the grid north meridian.
 UTM coordinates are NAD83, Zone 17, Meters.



() Denotes Location of Well on United States Topographic Maps



I, the undersigned, hereby certify that this plat is correct to the best of my knowledge and belief and shows all the information required by law and the regulations issued and prescribed by the Department of Environmental Protection.

Ben R. Singleton
 P.S. 2092



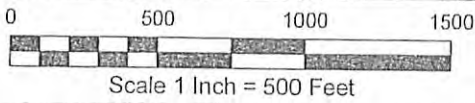
FILE NO: 239-13
 DRAWING NO: Oxford 155 H6
 SCALE: 1" = 2000'
 MINIMUM DEGREE OF ACCURACY: 1:2500
 PROVEN SOURCE OF ELEVATION: NGS CORS Station

STATE OF WEST VIRGINIA
 DEPARTMENT OF ENVIRONMENTAL PROTECTION
OIL AND GAS DIVISION

DATE: August 11 20 15
 OPERATOR'S WELL NO. 513069
 API WELL NO
 47 - 017 - 06760H
 STATE COUNTY PERMIT

WELL TYPE: OIL GAS LIQUID INJECTION WASTE DISPOSAL
 (IF GAS) PRODUCTION: STORAGE DEEP SHALLOW
 LOCATION: ELEVATION: Original 1212.5 Proposed 1199 WATERSHED Sheep Run of South Fork of Hughes River QUADRANGLE: Oxford
 DISTRICT: South West COUNTY: Doddridge
 SURFACE OWNER: Haessly Land & Timber, LLC ACREAGE: 615
 ROYALTY OWNER: Eli Nutter Heirs LEASE NO: 106125 ACREAGE: 615
 PROPOSED WORK: DRILL CONVERT DRILL DEEPER FRACTURE OR STIMULATE PLUG OFF OLD FORMATION
 PERFORATE NEW FORMATION OTHER PHYSICAL CHANGE IN WELL (SPECIFY)
 PLUG AND ABANDON CLEAN OUT AND REPLUG TARGET FORMATION: Marcellus ESTIMATED DEPTH: TVD 6,611

WELL OPERATOR: EQT Production Company DESIGNATED AGENT: Rex C. Ray
 ADDRESS: 115 Professional Place PO Box 280 ADDRESS: 115 Professional Place PO Box 280
 Bridgeport, Wv 26330 Bridgeport, WV 26330



Detail Sketch for Wells WV 513064, 513065, 513066, 513067, 513068, 513069, 516483, 516484

Pullman 7.5' USGS QUADRANGLE		Proposed Disturbance Area	
Projected culvert inventory. (for bid purposes only)		Well Site Location	See Site Plan
15" minimum diameter culverts	See Site Plan	Proposed Access Road	See Site Plan
24" minimum diameter culverts	See Site Plan	Approximate Total Disturbance	See Site Plan
DRAWN BY: Dale Tomlin PS	DATE: August 13, 2015	FILE NO: 239-13	DRAWING FILE NO: 239-13 Rec Plan dwg

Note: SEE SITE PLAN OF OXF 155 FOR COMPLETE GRADING & DRAINAGE CONSTRUCTION INCLUDING EROSION & SEDIMENT CONTROL DETAILS, ETC.

Received
 Office of Oil & Gas
 OCT 01 2015
 MAG
 9-30-15



SURVEYING AND MAPPING SERVICES PERFORMED BY:
ALLEGHENY SURVEYS, INC.
 1-800-482-8606
 Birch River Office Phone: (304) 649-8606 Fax: (304) 649-8608
 237 Birch River Road P.O. Box 438 Birch River, WV 26610

02/12/2016