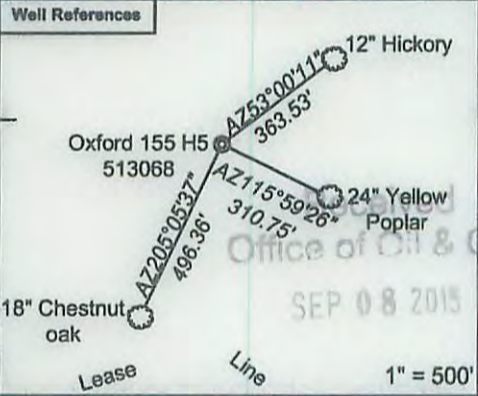


- Oxford 155**
- H7, 516438
 - H6, 513069
 - H5, 513068
 - H4, 513067
 - H3, 513066
 - H2, 513065
 - H1, 513064

WV 513068 coordinates:
 NAD 27 N: 262,594.53 E: 1,628,847.54
 NAD 27 Lat: 39.213548 Long: -80.809927
 NAD 83 UTM N: 4,340,501.22 E: 516,424.06
WV 513068 Landing Point coordinates:
 NAD 27 N: 262,189.51 E: 1,628,117.02
 NAD 27 Lat: 39.212408 Long: -80.812484
 NAD 83 UTM N: 4,340,374.12 E: 516,203.57
WV 513068 Bottom Hole coordinates:
 NAD 27 N: 264,954.01 E: 1,626,708.44
 NAD 27 Lat: 39.219939 Long: -80.817598
 NAD 83 UTM N: 4,341,209.14 E: 515,760.40
 West Virginia Coordinate System of 1927 (North Zone) based upon Differential GPS Measurements.
 Plat orientation, corner and well ties are based upon the grid north meridian.
 Well location references are based upon the grid north meridian.
 UTM coordinates are NAD83, Zone 17, Meters.

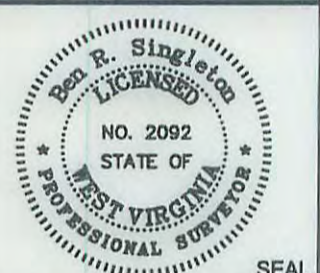


(---) Denotes Location of Well on United States Topographic Maps



I, the undersigned, hereby certify that this plat is correct to the best of my knowledge and belief and shows all the information required by law and the regulations issued and prescribed by the Department of Environmental Protection.

Ben R. Singleton
 P.S. 2092



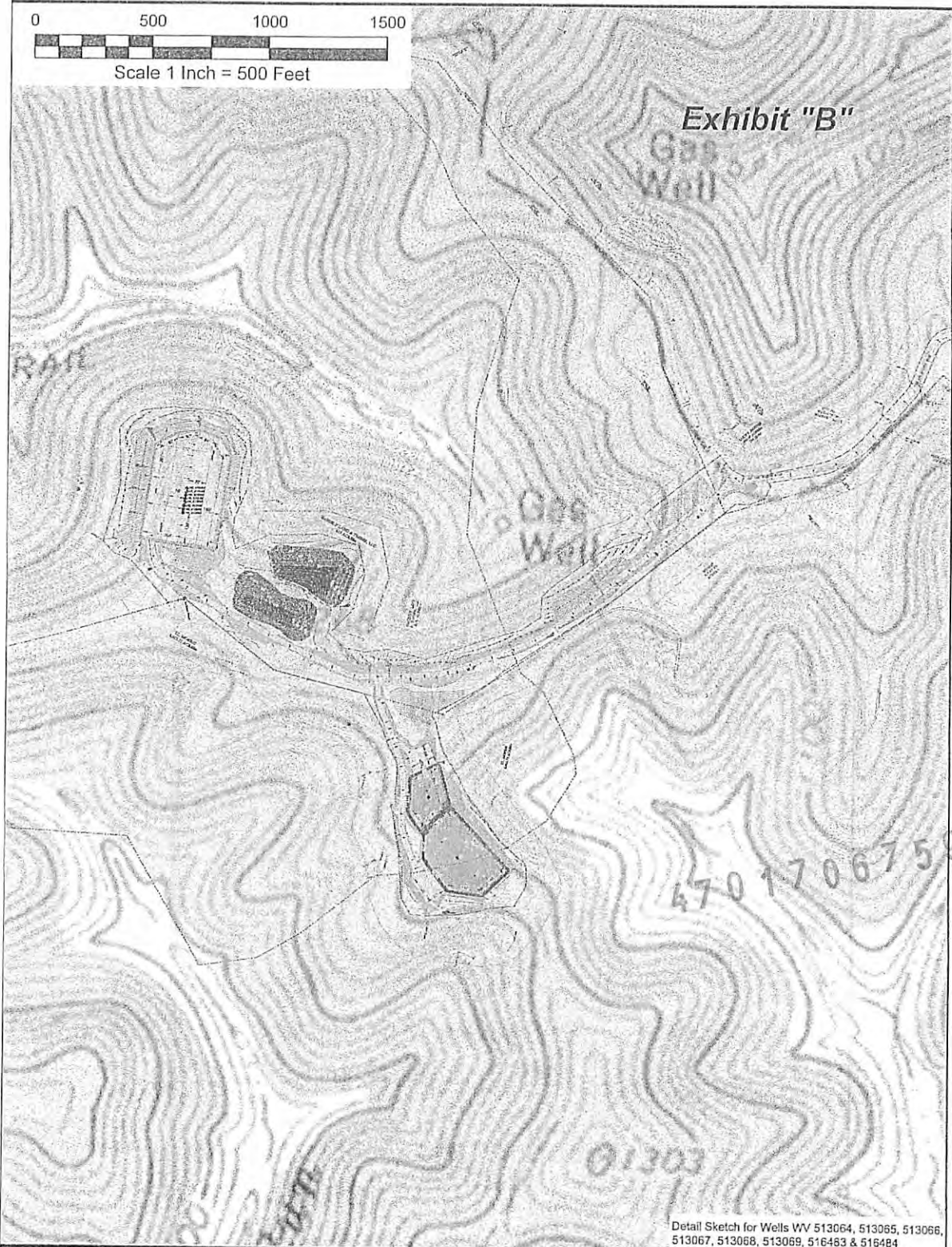
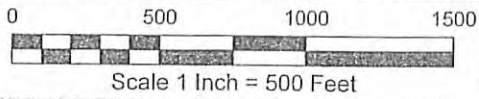
FILE NO: 239-13
 DRAWING NO: Oxford 155 H5
 SCALE: 1" = 2000'
 MINIMUM DEGREE OF ACCURACY: 1:2500
 PROVEN SOURCE OF ELEVATION: NGS CORS Station

STATE OF WEST VIRGINIA
 DEPARTMENT OF ENVIRONMENTAL PROTECTION
OIL AND GAS DIVISION

DATE: August 11 20 15
 OPERATOR'S WELL NO. 513068
 API WELL NO
 47 - 017 - 06759 HGA
 STATE COUNTY PERMIT

WELL TYPE: OIL GAS LIQUID INJECTION WASTE DISPOSAL
 (IF GAS) PRODUCTION: STORAGE DEEP SHALLOW
 LOCATION: ELEVATION: Original 1212.5 Proposed 1139 WATERSHED Sheep Run of South Fork of Hughes River QUADRANGLE: Oxford
 DISTRICT: South West COUNTY: Doddridge
 SURFACE OWNER: Haessly Land & Timber, LLC ACREAGE: 615
 ROYALTY OWNER: Eli Nutter Heirs LEASE NO: 106125 ACREAGE: 615
 PROPOSED WORK: DRILL CONVERT DRILL DEEPER FRACTURE OR STIMULATE PLUG OFF OLD FORMATION
 PERFORATE NEW FORMATION OTHER PHYSICAL CHANGE IN WELL (SPECIFY)
 PLUG AND ABANDON CLEAN OUT AND REPLUG TARGET FORMATION: Marcellus ESTIMATED DEPTH: TVD 6,611

WELL OPERATOR: EQT Production Company DESIGNATED AGENT: Rex C. Ray
 ADDRESS: 115 Professional Place PO Box 280 ADDRESS: 115 Professional Place PO Box 280
 Bridgeport, WV 26330 Bridgeport, WV 26330



Detail Sketch for Wells WY 513064, 513065, 513066, 513067, 513068, 513069, 516483 & 516484

Pullman 7.5' USGS QUADRANGLE		Proposed Disturbance Area	
Projected culvert inventory (for bid purposes only)		Well Site Location	See Site Plan
15" minimum diameter culverts	See Site Plan	Proposed Access Road	See Site Plan
24" minimum diameter culverts	See Site Plan	Approximate Total Disturbance	See Site Plan
DRAWN BY: Dale Tomlin PS	DATE: August 13, 2015	FILE NO: 239-13	DRAWING FILE NO: 239-13 Rec Plan.dwg

Note: SEE SITE PLAN OF OXF 155 FOR COMPLETE GRADING & DRAINAGE CONSTRUCTION INCLUDING EROSION & SEDIMENT CONTROL DETAILS, ETC.

Received
Office of Oil & Gas

OCT 01 2015

MAC
9-30-15

02/12/2016



SURVEYING AND MAPPING SERVICES PERFORMED BY:
ALLEGHENY SURVEYS, INC.
 1-800-482-8606
 Birch River Office Phone: (304) 649-8606 237 Birch River Road P.O. Box 438 Birch River, WV 26610
 Fax: (304) 649-8608