



Where energy meets innovation.

# Actual Wellpath Report

OXF-155 513066 AWP Proj: 12292'

Page 1 of 11



REFERENCE WELLPATH IDENTIFICATION			
Operator	EQT	Slot	Slot 513066
Area	Doddridge Co., WV	Well	OXF-155 513066
Field	Doddridge	Wellbore	OXF-155 513066 AWB
Facility	OXF-155 Pad	API	47-017-06757

REPORT SETUP INFORMATION			
Projection System	NAD27 / Lambert West Virginia SP, Northern Zone (4701), US feet	Software System	WellArchitect® 5.0
North Reference	Grid	User	Edsaryar
Scale	0.999967	Report Generated	21/Jul/2017 at 19:05
Convergence at slot	0.84° West	Database/Source file	WA_MPL_EASTERNUS_Defn/OXF-155_513066_AWP_Proj_12292_.xml

WELLPATH LOCATION						
	Local coordinates		Grid coordinates		Geographic coordinates	
	North[ft]	East[ft]	Easting[US ft]	Northing[US ft]	Latitude	Longitude
Slot Location	29.63	4.71	1628842.83	262564.90	39°12'48.478"N	80°48'35.792"W
Facility Reference Pt			1628838.12	262535.27	39°12'48.184"N	80°48'35.846"W
Field Reference Pt			0.00	0.00	38°17'12.460"N	86°28'23.077"W

WELLPATH DATUM			
Calculation method	Minimum curvature	Savanna 655 (RKB) to Facility Vertical Datum	1215.00ft
Horizontal Reference Pt	Slot	Savanna 655 (RKB) to Mean Sea Level	1215.00ft
Vertical Reference Pt	Savanna 655 (RKB)	Savanna 655 (RKB) to Ground Level at Slot (Slot 513066)	16.00ft
MD Reference Pt	Savanna 655 (RKB)	Section Origin	N 0.00, E 0.00 ft
Field Vertical Reference	Mean Sea Level	Section Azimuth	299.87°

RECEIVED  
Office of Oil and Gas  
JUN 15 2018  
WV Department of  
Environmental Protection

07/20/2018



# Actual Wellpath Report

OXF-155 513066 AWP Proj: 12292'

Page 2 of 11



Where energy meets innovation.

REFERENCE WELLPATH IDENTIFICATION			
Operator	EQT	Slot	Slot 513066
Area	Doddridge Co., WV	Well	OXF-155 513066
Field	Doddridge	Wellbore	OXF-155 513066 AWB
Facility	OXF-155 Pad		

WELLPATH DATA (215 stations) † = interpolated/extrapolated station											
MD [ft]	Inclination [°]	Azimuth [°]	TVD [ft]	TVDSS [ft]	Vert Sect [ft]	North [ft]	East [ft]	DLS [°/100ft]	Build Rate [°/100ft]	Turn Rate [°/100ft]	Comments
0.00†	0.000	322.770	0.00	-1215.00	0.00	0.00	0.00	0.00	0.00	0.00	
16.00	0.000	322.770	16.00	-1199.00	0.00	0.00	0.00	0.00	0.00	0.00	
103.00	0.230	322.770	103.00	-1112.00	0.16	0.14	-0.11	0.26	0.26	-42.79	
203.00	0.130	171.260	203.00	-1012.00	0.27	0.19	-0.21	0.35	-0.10	-151.51	
303.00	0.120	177.040	303.00	-912.00	0.15	-0.03	-0.19	0.02	-0.01	5.78	
403.00	0.120	182.060	403.00	-812.00	0.04	-0.24	-0.19	0.01	0.00	5.02	
503.00	0.120	167.250	503.00	-712.00	-0.08	-0.45	-0.17	0.03	0.00	-14.81	
603.00	0.190	185.000	603.00	-612.00	-0.22	-0.71	-0.16	0.08	0.07	17.75	
703.00	0.260	196.340	703.00	-512.00	-0.34	-1.10	-0.24	0.08	0.07	11.34	
803.00	0.270	194.670	803.00	-412.00	-0.46	-1.54	-0.36	0.01	0.01	-1.67	
903.00	0.280	190.060	903.00	-312.00	-0.60	-2.01	-0.46	0.02	0.01	-4.61	
1003.00	0.330	186.590	1002.99	-212.01	-0.80	-2.54	-0.54	0.05	0.05	-3.47	
1103.00	0.330	184.720	1102.99	-112.01	-1.03	-3.11	-0.59	0.01	0.00	-1.87	
1203.00	0.380	177.200	1202.99	-12.01	-1.34	-3.73	-0.60	0.07	0.05	-7.52	
1303.00	0.430	175.000	1302.99	87.99	-1.73	-4.43	-0.55	0.05	0.05	-2.20	
1403.00	0.460	173.120	1402.99	187.99	-2.18	-5.21	-0.47	0.03	0.03	-1.88	
1503.00	0.450	172.860	1502.98	287.98	-2.66	-5.99	-0.38	0.01	-0.01	-0.26	
1603.00	0.450	162.040	1602.98	387.98	-3.19	-6.76	-0.21	0.08	0.00	-10.82	
1703.00	0.410	160.750	1702.98	487.98	-3.75	-7.47	0.03	0.04	-0.04	-1.29	
1803.00	0.170	167.660	1802.97	587.97	-4.12	-7.95	0.18	0.24	-0.24	6.91	
1903.00	0.180	170.610	1902.97	687.97	-4.32	-8.25	0.24	0.01	0.01	2.95	
2003.00	0.190	167.380	2002.97	787.97	-4.53	-8.57	0.30	0.01	0.01	-3.23	
2103.00	0.200	168.310	2102.97	887.97	-4.76	-8.90	0.37	0.01	0.01	0.93	
2203.00	0.200	171.800	2202.97	987.97	-4.98	-9.24	0.43	0.01	0.00	3.49	
2303.00	0.170	160.950	2302.97	1087.97	-5.20	-9.56	0.51	0.05	-0.03	-10.85	
2403.00	0.160	164.470	2402.97	1187.97	-5.41	-9.83	0.59	0.01	-0.01	3.52	
2503.00	0.170	170.320	2502.97	1287.97	-5.61	-10.11	0.66	0.02	0.01	5.85	
2603.00	0.130	151.390	2602.97	1387.97	-5.80	-10.36	0.74	0.06	-0.04	-18.93	
2703.00	0.110	151.790	2702.97	1487.97	-5.97	-10.54	0.83	0.02	-0.02	0.40	
2803.00	0.120	142.900	2802.97	1587.97	-6.15	-10.71	0.94	0.02	0.01	-8.89	

RECEIVED  
Office of Oil and Gas  
JUN 15 2018  
WV Department of  
Environmental Protection

07/20/2018





# Actual Wellpath Report

OXF-155 513066 AWP Proj: 12292'

Page 3 of 11



Where energy meets innovation.

REFERENCE WELLPATH IDENTIFICATION			
Operator	EQT	Slot	Slot 513066
Area	Doddridge Co., WV	Well	OXF-155 513066
Field	Doddridge	Wellbore	OXF-155 513066 AWP
Facility	OXF-155 Pad		

WELLPATH DATA (215 stations)											
MD [ft]	Inclination [°]	Azimuth [°]	TVD [ft]	TVDSS [ft]	Vert Sect [ft]	North [ft]	East [ft]	DLS [°/100ft]	Build Rate [°/100ft]	Turn Rate [°/100ft]	Comments
2903.00	0.110	148.820	2902.97	1687.97	-6.33	-10.88	1.06	0.02	-0.01	5.92	
3003.00	0.140	149.730	3002.97	1787.97	-6.52	-11.06	1.17	0.03	0.03	0.91	
3103.00	0.160	159.250	3102.97	1887.97	-6.74	-11.30	1.28	0.03	0.02	9.52	
3203.00	0.220	143.200	3202.97	1987.97	-7.02	-11.58	1.44	0.08	0.06	-16.05	
3303.00	0.110	149.220	3302.97	2087.97	-7.28	-11.82	1.61	0.11	-0.11	6.02	
3403.00	0.070	246.720	3402.97	2187.97	-7.33	-11.93	1.60	0.14	-0.04	97.50	
3503.00	0.340	284.600	3502.97	2287.97	-7.01	-11.88	1.26	0.29	0.27	37.88	
3508.00	0.340	294.690	3507.97	2292.97	-6.98	-11.87	1.23	1.20	0.00	201.80	KOP 1=3508' MD
3539.00	1.330	257.710	3538.96	2323.96	-6.62	-11.90	0.79	3.48	3.19	-119.29	Gyro Tie In=3539' MD
3583.00	4.930	241.270	3582.89	2367.89	-5.25	-12.92	-1.36	8.35	8.18	-37.36	
3627.00	9.360	239.010	3626.54	2411.54	-2.52	-15.68	-6.09	10.09	10.07	-5.14	
3670.00	14.010	236.230	3668.64	2453.64	1.49	-20.37	-13.42	10.89	10.81	-6.47	
3714.00	17.990	230.180	3710.93	2495.93	6.22	-27.69	-23.07	9.80	9.05	-13.75	
3758.00	21.040	223.410	3752.40	2537.40	10.43	-37.78	-33.72	8.62	6.93	-15.39	
3802.00	23.830	216.620	3793.07	2578.07	13.32	-50.66	-44.45	8.64	6.34	-15.43	
3845.00	27.180	210.130	3831.88	2616.88	14.39	-66.13	-54.57	10.14	7.79	-15.09	
3889.00	30.190	209.010	3870.48	2655.48	14.27	-84.50	-64.98	6.95	6.84	-2.55	
3931.00	32.380	210.920	3906.37	2691.37	14.31	-103.39	-75.88	5.72	5.21	4.55	
3974.00	35.220	212.390	3942.10	2727.10	15.07	-123.74	-88.45	6.87	6.60	3.42	
4017.00	38.750	211.870	3976.44	2761.44	16.09	-145.64	-102.20	8.24	8.21	-1.21	
4059.00	40.930	215.620	4008.70	2793.70	17.92	-168.00	-117.15	7.72	5.19	8.93	
4102.00	42.060	215.560	4040.90	2825.90	20.76	-191.17	-133.73	2.63	2.63	-0.14	
4146.00	42.790	215.270	4073.38	2858.38	23.63	-215.36	-150.94	1.72	1.66	-0.66	
4188.00	43.960	214.210	4103.91	2888.91	26.08	-239.06	-167.37	3.28	2.79	-2.52	
4230.00	44.820	213.600	4133.92	2918.92	28.14	-263.44	-183.76	2.29	2.05	-1.45	
4272.00	44.350	214.140	4163.84	2948.84	30.20	-287.92	-200.19	1.44	-1.12	1.29	
4316.00	43.340	213.160	4195.57	2980.57	32.21	-313.29	-217.08	2.77	-2.30	-2.23	
4359.00	44.050	212.780	4226.66	3011.66	33.82	-338.22	-233.24	1.76	1.65	-0.88	
4402.00	44.920	212.080	4257.34	3042.34	35.16	-363.65	-249.40	2.32	2.02	-1.63	
4444.00	44.140	210.730	4287.28	3072.28	35.95	-388.78	-264.75	2.92	-1.86	-3.21	

RECEIVED  
Office of Oil and Gas

JUN 15 2018

WV Department of  
Environmental Protection

07/20/2018





# Actual Wellpath Report

OXF-155 513066 AWP Proj: 12292'

Page 4 of 11



Where energy meets innovation.

REFERENCE WELLPATH IDENTIFICATION			
Operator	EQT	Slot	Slot 513066
Area	Doddridge Co., WV	Well	OXF-155 513066
Field	Doddridge	Wellbore	OXF-155 513066 AWB
Facility	OXF-155 Pad		

WELLPATH DATA (215 stations)											
MD [ft]	Inclination [°]	Azimuth [°]	TVD [ft]	TVDSS [ft]	Vert Sect [ft]	North [ft]	East [ft]	DLS [°/100ft]	Build Rate [°/100ft]	Turn Rate [°/100ft]	Comments
4488.00	43.810	213.170	4318.95	3103.95	37.06	-414.70	-280.91	3.92	-0.75	5.55	
4531.00	44.700	215.690	4349.75	3134.75	39.45	-439.45	-297.88	4.58	2.07	5.86	
4573.00	44.500	215.640	4379.65	3164.65	42.43	-463.41	-315.07	0.48	-0.48	-0.12	
4616.00	44.000	214.330	4410.45	3195.45	45.10	-487.99	-332.28	2.42	-1.16	-3.05	
4659.00	43.360	214.570	4441.55	3226.55	47.47	-512.48	-349.08	1.54	-1.49	0.56	
4702.00	44.080	214.760	4472.63	3257.63	49.96	-536.92	-365.98	1.70	1.67	0.44	
4744.00	43.810	212.800	4502.87	3287.87	51.95	-561.14	-382.19	3.30	-0.64	-4.67	
4787.00	44.320	210.600	4533.77	3318.77	52.90	-586.59	-397.90	3.75	1.19	-5.12	
4830.00	43.800	208.250	4564.67	3349.67	52.67	-612.63	-412.59	3.99	-1.21	-5.47	
4872.00	43.390	208.280	4595.09	3380.09	51.86	-638.13	-426.30	0.98	-0.98	0.07	
4916.00	43.970	210.090	4626.91	3411.91	51.50	-664.66	-441.12	3.13	1.32	4.11	
4959.00	44.700	211.650	4657.67	3442.67	52.02	-690.45	-456.54	3.05	1.70	3.63	
5003.00	44.280	211.960	4689.06	3474.06	53.07	-716.65	-472.79	1.07	-0.95	0.70	
5047.00	43.330	210.820	4720.81	3505.81	53.88	-742.65	-488.66	2.81	-2.16	-2.59	
5090.00	43.430	211.960	4752.06	3537.06	54.66	-767.86	-504.04	1.84	0.23	2.65	
5134.00	43.530	214.140	4783.99	3568.99	56.34	-793.24	-520.55	3.42	0.23	4.95	
5178.00	43.200	214.180	4815.98	3600.98	58.60	-818.24	-537.51	0.75	-0.75	0.09	
5221.00	42.290	212.710	4847.56	3632.56	60.42	-842.59	-553.60	3.14	-2.12	-3.42	
5265.00	42.970	212.600	4879.93	3664.93	61.87	-867.67	-569.68	1.55	1.55	-0.25	
5309.00	42.460	210.910	4912.26	3697.26	62.85	-893.05	-585.39	2.85	-1.16	-3.84	
5352.00	43.700	212.540	4943.67	3728.67	63.81	-918.03	-600.83	3.88	2.88	3.79	
5396.00	43.570	212.100	4975.51	3760.51	65.11	-943.69	-617.07	0.75	-0.30	-1.00	
5440.00	44.160	213.140	5007.24	3792.24	66.57	-969.37	-633.50	2.12	1.34	2.36	
5484.00	43.770	212.890	5038.91	3823.91	68.25	-994.98	-650.15	0.97	-0.89	-0.57	
5527.00	44.650	213.880	5069.73	3854.73	70.09	-1020.01	-666.65	2.60	2.05	2.30	
5569.00	44.480	214.210	5099.65	3884.65	72.23	-1044.43	-683.15	0.68	-0.40	0.79	
5612.00	44.040	213.690	5130.45	3915.45	74.37	-1069.33	-699.91	1.33	-1.02	-1.21	
5654.00	44.290	215.140	5160.58	3945.58	76.69	-1093.47	-716.45	2.48	0.60	3.45	
5698.00	43.810	214.960	5192.20	3977.20	79.45	-1118.51	-734.02	1.13	-1.09	-0.41	
5740.00	42.850	213.540	5222.75	4007.75	81.66	-1142.33	-750.24	3.26	-2.29	-3.38	

RECEIVED  
Office of Oil and Gas

JUN 15 2018

WV Department of  
Environmental Protection

07/20/2018





# Actual Wellpath Report

OXF-155 513066 AWP Proj: 12292'

Page 5 of 11



Where energy meets innovation.

REFERENCE WELLPATH IDENTIFICATION			
Operator	EQT	Slot	Slot 513066
Area	Doddridge Co., WV	Well	OXF-155 513066
Field	Doddridge	Wellbore	OXF-155 513066 AWB
Facility	OXF-155 Pad		

## WELLPATH DATA (215 stations)

MD [ft]	Inclination [°]	Azimuth [°]	TVD [ft]	TVDSS [ft]	Vert Sect [ft]	North [ft]	East [ft]	DLS [°/100ft]	Build Rate [°/100ft]	Turn Rate [°/100ft]	Comments
5782.00	44.030	214.410	5253.25	4038.25	83.72	-1166.28	-766.38	3.15	2.81	2.07	
5824.00	43.770	213.530	5283.51	4068.51	85.81	-1190.43	-782.65	1.58	-0.62	-2.10	
5868.00	42.840	212.660	5315.53	4100.53	87.51	-1215.71	-799.13	2.51	-2.11	-1.98	
5912.00	43.120	212.420	5347.72	4132.72	88.90	-1241.00	-815.26	0.74	0.64	-0.55	
5955.00	41.920	211.000	5379.41	4164.41	89.84	-1265.72	-830.54	3.57	-2.79	-3.30	
6018.00	43.820	210.070	5425.59	4210.59	90.33	-1302.63	-852.31	3.18	3.02	-1.48	
6081.00	43.790	208.260	5471.05	4256.05	89.80	-1340.71	-873.56	1.99	-0.05	-2.87	
6144.00	43.960	207.820	5516.47	4301.47	88.40	-1379.25	-894.09	0.55	0.27	-0.70	
6207.00	44.010	210.700	5561.80	4346.80	87.94	-1417.41	-915.47	3.18	0.08	4.57	
6271.00	44.100	214.480	5607.81	4392.81	90.05	-1454.89	-939.43	4.11	0.14	5.91	
6334.00	44.070	217.840	5653.07	4438.07	94.85	-1490.27	-965.28	3.71	-0.05	5.33	
6397.00	44.060	219.350	5698.34	4483.34	101.49	-1524.51	-992.61	1.67	-0.02	2.40	
6460.00	44.160	218.740	5743.57	4528.57	108.49	-1558.57	-1020.24	0.69	0.16	-0.97	
6524.00	44.200	217.100	5789.47	4574.47	114.73	-1593.75	-1047.65	1.79	0.06	-2.56	
6586.00	44.190	216.310	5833.92	4618.92	119.88	-1628.40	-1073.48	0.89	-0.02	-1.27	
6650.00	44.200	214.880	5879.81	4664.81	124.33	-1664.68	-1099.44	1.56	0.02	-2.23	
6712.00	44.180	215.210	5924.27	4709.27	128.22	-1700.06	-1124.26	0.37	-0.03	0.53	
6776.00	44.100	217.500	5970.20	4755.20	133.26	-1735.95	-1150.68	2.49	-0.12	3.58	
6838.00	44.160	218.950	6014.70	4799.70	139.53	-1769.86	-1177.39	1.63	0.10	2.34	
6902.00	44.160	218.420	6060.61	4845.61	146.36	-1804.67	-1205.25	0.58	0.00	-0.83	
6965.00	43.460	220.530	6106.08	4891.08	153.63	-1838.33	-1232.97	2.57	-1.11	3.35	KOP 2=6965' MD
6996.00	41.930	224.110	6128.87	4913.87	158.15	-1853.87	-1247.11	9.25	-4.94	11.55	
7026.00	40.870	227.930	6151.37	4936.37	163.66	-1867.65	-1261.38	9.13	-3.53	12.73	
7058.00	39.590	232.360	6175.81	4960.81	170.81	-1880.89	-1277.23	9.79	-4.00	13.84	
7089.00	39.450	236.060	6199.72	4984.72	178.94	-1892.43	-1293.23	7.61	-0.45	11.94	
7121.00	39.660	239.420	6224.40	5009.40	188.46	-1903.30	-1310.45	6.72	0.66	10.50	
7153.00	40.360	243.160	6248.91	5033.91	199.19	-1913.17	-1328.49	7.83	2.19	11.69	
7184.00	41.020	248.730	6272.43	5057.43	211.08	-1921.40	-1346.94	11.90	2.13	17.97	
7216.00	40.910	253.170	6296.59	5081.59	224.86	-1928.24	-1366.75	9.10	-0.34	13.87	
7248.00	42.320	258.490	6320.53	5105.53	240.14	-1933.43	-1387.35	11.88	4.41	16.63	

RECEIVED  
Office of Oil and Gas

JUN 15 2018

WV Department of  
Environmental Protection

07/20/2018





Where energy meets innovation.

# Actual Wellpath Report

OXF-155 513066 AWP Proj: 12292'

Page 6 of 11



REFERENCE WELLPATH IDENTIFICATION			
Operator	EQT	Slot	Slot 513066
Area	Doddridge Co., WV	Well	OXF-155 513066
Field	Doddridge	Wellbore	OXF-155 513066 AWP
Facility	OXF-155 Pad		

WELLPATH DATA (215 stations) † = interpolated/extrapolated station											
MD [ft]	Inclination [°]	Azimuth [°]	TVD [ft]	TVDSS [ft]	Vert Sect [ft]	North [ft]	East [ft]	DLS Rate [°/100ft]	Build Rate [°/100ft]	Turn Rate [°/100ft]	Comments
7279.00	43.720	262.880	6343.19	5128.19	256.53	-1936.84	-1408.21	10.66	4.52	14.16	
7311.00	44.820	268.130	6366.12	5151.12	274.96	-1938.58	-1430.46	11.95	3.44	16.41	
7342.00	44.850	271.080	6388.10	5173.10	293.83	-1938.73	-1452.31	6.71	0.10	9.52	
7374.00	44.800	274.240	6410.80	5195.80	313.89	-1937.68	-1474.84	6.96	-0.16	9.88	
7406.00	45.640	277.390	6433.34	5218.34	334.63	-1935.38	-1497.43	7.46	2.62	9.84	
7438.00	47.050	281.360	6455.44	5240.44	356.31	-1931.60	-1520.26	10.00	4.41	12.41	
7469.00	49.090	285.580	6476.16	5261.16	378.43	-1926.22	-1542.68	12.08	6.58	13.61	
7500.00	51.720	290.620	6495.92	5280.92	401.80	-1918.78	-1565.36	15.13	8.48	16.26	
7532.00	53.890	294.500	6515.27	5300.27	427.07	-1908.99	-1588.89	11.80	6.78	12.13	
7564.00	55.550	297.370	6533.75	5318.75	453.13	-1897.57	-1612.37	8.97	5.19	8.97	
7596.00	57.530	300.480	6551.40	5336.40	479.82	-1884.65	-1635.73	10.20	6.19	9.72	
7627.00	59.810	303.560	6567.52	5352.52	506.27	-1870.61	-1658.17	11.23	7.35	9.94	
7659.00	62.110	305.060	6583.05	5368.05	534.16	-1854.83	-1681.28	8.27	7.19	4.69	
7691.00	64.970	307.140	6597.31	5382.31	562.63	-1837.95	-1704.41	10.66	8.94	6.50	
7722.00	67.640	310.940	6609.77	5394.77	590.65	-1820.07	-1726.45	14.15	8.61	12.26	
7753.00	70.750	314.580	6620.78	5405.78	618.88	-1800.40	-1747.71	14.87	10.03	11.74	
7785.00	72.080	316.940	6630.98	5415.98	648.05	-1778.67	-1768.87	8.13	4.16	7.38	
7816.00	72.110	317.640	6640.52	5425.52	676.20	-1756.99	-1788.88	2.15	0.10	2.26	
7848.00	72.010	319.880	6650.37	5435.37	705.00	-1734.10	-1808.95	6.67	-0.31	7.00	
7880.00	73.880	323.060	6659.76	5444.76	733.44	-1710.17	-1828.00	11.15	5.84	9.94	
7911.00	77.470	326.000	6667.43	5452.43	760.72	-1685.71	-1845.41	14.78	11.58	9.48	
7943.00	79.820	328.330	6673.73	5458.73	788.60	-1659.35	-1862.42	10.24	7.34	7.28	
7974.00	82.130	330.290	6678.59	5463.59	815.26	-1633.03	-1878.04	9.72	7.45	6.32	
8006.00	85.070	331.430	6682.16	5467.16	842.51	-1605.26	-1893.53	9.85	9.19	3.56	
8037.00	87.380	332.220	6684.20	5469.20	868.76	-1577.99	-1908.13	7.87	7.45	2.55	
8067.27†	90.000	333.459	6684.89	5469.89	894.14	-1551.07	-1921.94	9.57	8.66	4.09	Deepest Point of Well=8067.27' MD / 6684.9' TVD
8069.00	90.150	333.530	6684.89	5469.89	895.58	-1549.52	-1922.72	9.57	8.66	4.09	LP=8069' MD / 6684.89' TVD
8100.00	90.890	334.060	6684.61	5469.61	921.31	-1521.71	-1936.40	2.94	2.39	1.71	
8164.00	91.110	333.120	6683.49	5468.49	974.53	-1464.40	-1964.87	1.51	0.34	-1.47	
8227.00	91.050	330.760	6682.31	5467.31	1027.90	-1408.81	-1994.49	3.75	-0.10	-3.75	

RECEIVED  
Office of Oil and Gas  
JUN 15 2018  
WV Department of  
Environmental Protection

07/20/2018





Where energy meets innovation.

# Actual Wellpath Report

OXF-155 513066 AWP Proj: 12292'

Page 7 of 11



REFERENCE WELLPATH IDENTIFICATION			
Operator	EQT	Slot	Slot 513066
Area	Doddridge Co., WV	Well	OXF-155 513066
Field	Doddridge	Wellbore	OXF-155 513066 AWB
Facility	OXF-155 Pad		

WELLPATH DATA (215 stations)											
MD [ft]	Inclination [°]	Azimuth [°]	TVD [ft]	TVDSS [ft]	Vert Sect [ft]	North [ft]	East [ft]	DLS [°/100ft]	Build Rate [°/100ft]	Turn Rate [°/100ft]	Comments
8290.00	91.110	329.410	6681.12	5466.12	1082.33	-1354.22	-2025.91	2.14	0.10	-2.14	
8352.00	91.350	329.850	6679.79	5464.79	1136.14	-1300.74	-2057.24	0.81	0.39	0.71	
8415.00	91.480	330.820	6678.23	5463.23	1190.43	-1246.01	-2088.42	1.55	0.21	1.54	
8478.00	91.820	329.250	6676.42	5461.42	1244.87	-1191.46	-2119.87	2.55	0.54	-2.49	
8541.00	89.820	327.650	6675.52	5460.52	1300.19	-1137.78	-2152.83	4.07	-3.17	-2.54	
8605.00	89.690	329.790	6675.79	5460.79	1356.24	-1083.09	-2186.05	3.35	-0.20	3.34	
8668.00	89.480	333.340	6676.25	5461.25	1409.83	-1027.70	-2216.05	5.64	-0.33	5.63	
8730.00	89.510	336.770	6676.79	5461.79	1460.50	-971.49	-2242.19	5.53	0.05	5.53	
8793.00	90.060	340.620	6677.03	5462.03	1509.57	-912.81	-2265.08	6.17	0.87	6.11	
8856.00	91.290	339.770	6676.29	5461.29	1557.59	-853.54	-2286.42	2.37	1.95	-1.35	
8917.00	93.970	338.050	6673.49	5458.49	1604.91	-796.70	-2308.34	5.22	4.39	-2.82	
8980.00	95.860	334.520	6668.09	5453.09	1655.41	-739.24	-2333.58	6.34	3.00	-5.60	
9043.00	95.150	328.750	6662.04	5447.04	1708.71	-684.08	-2363.36	9.19	-1.13	-9.16	
9107.00	90.650	325.370	6658.80	5443.80	1765.54	-630.46	-2398.11	8.79	-7.03	-5.28	
9170.00	90.310	327.710	6658.27	5443.27	1821.83	-577.91	-2432.84	3.75	-0.54	3.71	
9233.00	90.280	330.540	6657.95	5442.95	1876.79	-523.85	-2465.16	4.49	-0.05	4.49	
9296.00	91.080	332.230	6657.20	5442.20	1930.49	-468.55	-2495.33	2.97	1.27	2.68	
9360.00	89.750	333.170	6656.74	5441.74	1984.27	-411.68	-2524.68	2.54	-2.08	1.47	
9423.00	89.910	334.540	6656.93	5441.93	2036.51	-355.13	-2552.44	2.19	0.25	2.17	
9485.00	90.090	336.920	6656.93	5441.93	2086.75	-298.61	-2577.93	3.85	0.29	3.84	
9549.00	91.720	338.210	6655.91	5440.91	2137.38	-239.46	-2602.35	3.25	2.55	2.02	
9612.00	92.000	334.760	6653.87	5438.87	2187.92	-181.74	-2627.46	5.49	0.44	-5.48	
9674.00	92.400	332.420	6651.49	5436.49	2239.44	-126.25	-2655.02	3.83	0.65	-3.77	
9737.00	92.490	331.320	6648.80	5433.80	2292.82	-70.74	-2684.69	1.75	0.14	-1.75	
9799.00	92.430	331.180	6646.14	5431.14	2345.70	-16.44	-2714.49	0.25	-0.10	-0.23	
9863.00	92.430	332.180	6643.43	5428.43	2400.04	39.85	-2744.82	1.56	0.00	1.56	
9925.00	91.910	333.780	6641.08	5426.08	2451.93	95.04	-2772.97	2.71	-0.84	2.58	
9988.00	92.860	332.040	6638.46	5423.46	2504.70	151.08	-2801.63	3.14	1.51	-2.76	
10051.00	91.200	328.130	6636.22	5421.22	2559.09	205.64	-2833.02	6.74	-2.63	-6.21	
10114.00	91.170	330.660	6634.92	5419.92	2613.90	259.85	-2865.09	4.02	-0.05	4.02	

RECEIVED  
Office of Oil and Gas

JUN 15 2018

WV Department of  
Environmental Protection

07/20/2018





Where energy meets innovation.

# Actual Wellpath Report

OXF-155 513066 AWP Proj: 12292'

Page 8 of 11



REFERENCE WELLPATH IDENTIFICATION			
Operator	EQT	Slot	Slot 513066
Area	Doddridge Co., WV	Well	OXF-155 513066
Field	Doddridge	Wellbore	OXF-155 513066 AWB
Facility	OXF-155 Pad		

WELLPATH DATA (215 stations)											
MD [ft]	Inclination [°]	Azimuth [°]	TVD [ft]	TVDSS [ft]	Vert Sect [ft]	North [ft]	East [ft]	DLS [°/100ft]	Build Rate [°/100ft]	Turn Rate [°/100ft]	Comments
10178.00	91.600	332.700	6633.37	5418.37	2668.26	316.17	-2895.44	3.26	0.67	3.19	
10241.00	91.540	329.210	6631.65	5416.65	2722.19	371.21	-2926.01	5.54	-0.10	-5.54	
10304.00	90.860	329.180	6630.33	5415.33	2777.10	425.31	-2958.27	1.08	-1.08	-0.05	
10367.00	90.490	332.720	6629.59	5414.59	2831.05	480.38	-2988.85	5.65	-0.59	5.62	
10429.00	89.850	337.550	6629.40	5414.40	2881.65	536.61	-3014.91	7.86	-1.03	7.79	
10491.00	91.020	340.240	6628.93	5413.93	2929.81	594.44	-3037.23	4.73	1.89	4.34	
10554.00	91.450	338.860	6627.57	5412.57	2978.29	653.46	-3059.24	2.29	0.68	-2.19	
10617.00	91.600	335.240	6625.90	5410.90	3028.46	711.44	-3083.79	5.75	0.24	-5.75	
10680.00	91.540	331.160	6624.17	5409.17	3081.06	767.64	-3112.18	6.47	-0.10	-6.48	
10744.00	91.420	332.270	6622.52	5407.52	3135.41	823.98	-3142.50	1.74	-0.19	1.73	
10807.00	91.450	334.150	6620.94	5405.94	3188.02	880.20	-3170.88	2.98	0.05	2.98	
10870.00	91.850	331.320	6619.12	5404.12	3240.91	936.17	-3199.73	4.53	0.63	-4.49	
10933.00	91.380	329.120	6617.35	5402.35	3295.25	990.82	-3231.00	3.57	-0.75	-3.49	
10996.00	91.320	332.730	6615.86	5400.86	3349.20	1045.86	-3261.60	5.73	-0.10	5.73	
11059.00	91.690	331.020	6614.21	5399.21	3402.60	1101.40	-3291.29	2.78	0.59	-2.71	
11121.00	91.260	326.890	6612.61	5397.61	3456.76	1154.49	-3323.25	6.70	-0.69	-6.66	
11185.00	90.830	327.820	6611.44	5396.44	3513.52	1208.37	-3357.77	1.60	-0.67	1.45	
11248.00	90.770	332.850	6610.56	5395.56	3567.80	1263.09	-3388.93	7.98	-0.10	7.98	
11311.00	90.550	334.180	6609.84	5394.84	3620.24	1319.47	-3417.03	2.14	-0.35	2.11	
11375.00	90.920	334.400	6609.02	5394.02	3673.03	1377.13	-3444.79	0.67	0.58	0.34	
11438.00	90.920	333.540	6608.01	5393.01	3725.19	1433.74	-3472.43	1.36	0.00	-1.37	
11500.00	90.920	332.870	6607.01	5392.01	3776.99	1489.07	-3500.38	1.08	0.00	-1.08	
11563.00	90.650	336.900	6606.15	5391.15	3828.57	1546.10	-3527.11	6.41	-0.43	6.40	
11627.00	90.830	339.230	6605.32	5390.32	3878.86	1605.46	-3551.01	3.65	0.28	3.64	
11690.00	90.770	337.910	6604.44	5389.44	3928.02	1664.09	-3574.03	2.10	-0.10	-2.10	
11753.00	90.400	335.990	6603.80	5388.80	3978.28	1722.06	-3598.69	3.10	-0.59	-3.05	
11816.00	90.890	337.870	6603.09	5388.09	4028.54	1780.01	-3623.38	3.08	0.78	2.98	
11879.00	90.250	338.190	6602.46	5387.46	4078.08	1838.43	-3646.94	1.14	-1.02	0.51	
11942.00	90.920	340.460	6601.82	5386.82	4126.72	1897.37	-3669.18	3.76	1.06	3.60	
12005.00	90.280	339.570	6601.16	5386.16	4174.87	1956.57	-3690.71	1.74	-1.02	-1.41	

RECEIVED  
Office of Oil and Gas

JUN 15 2018

WV Department of  
Environmental Protection

07/20/2018





# Actual Wellpath Report

OXF-155 513066 AWP Proj: 12292'

Page 9 of 11



Where energy meets innovation.

REFERENCE WELLPATH IDENTIFICATION			
Operator	EQT	Slot	Slot 513066
Area	Doddridge Co., WV	Well	OXF-155 513066
Field	Doddridge	Wellbore	OXF-155 513066 AWB
Facility	OXF-155 Pad		

WELLPATH DATA (215 stations)											
MD [ft]	Inclination [°]	Azimuth [°]	TVD [ft]	TVDSS [ft]	Vert Sect [ft]	North [ft]	East [ft]	DLS [°/100ft]	Build Rate [°/100ft]	Turn Rate [°/100ft]	Comments
12068.00	89.660	337.410	6601.19	5386.19	4224.09	2015.18	-3713.81	3.57	-0.98	-3.43	
12131.00	90.710	338.170	6600.99	5385.99	4273.79	2073.50	-3737.63	2.06	1.67	1.21	
12194.00	89.940	335.260	6600.63	5385.63	4324.20	2131.37	-3762.53	4.78	-1.22	-4.62	
12257.00	89.690	334.820	6600.83	5385.83	4375.70	2188.48	-3789.11	0.80	-0.40	-0.70	Final Survey=12257' MD / 6600.83' TVD
12292.00	89.690	334.820	6601.02	5386.02	4404.38	2220.15	-3804.00	0.00	0.00	0.00	Projection to TD=12292' MD / 6601.02' TVD

HOLE & CASING SECTIONS									
- Ref Wellbore: OXF-155 513066 AWB					Ref Wellpath: OXF-155 513066 AWP Proj: 12292'				
String/Diameter	Start MD [ft]	End MD [ft]	Interval [ft]	Start TVD [ft]	End TVD [ft]	Start N/S [ft]	Start E/W [ft]	End N/S [ft]	End E/W [ft]
20in Conductor	16.00	56.00	40.00	16.00	56.00	0.00	0.00	0.03	-0.02
17.5in Open Hole	56.00	572.00	516.00	56.00	572.00	0.03	-0.02	-0.62	-0.15
13.375in Casing Surface	16.00	572.00	556.00	16.00	572.00	0.00	0.00	-0.62	-0.15
12.25in Open Hole	572.00	3469.00	2897.00	572.00	3468.97	-0.62	-0.15	-11.92	1.43
9.625in Casing Intermediate	16.00	3469.00	3453.00	16.00	3468.97	0.00	0.00	-11.92	1.43
8.75in Open Hole	3469.00	5982.00	2513.00	3468.97	5399.38	-11.92	1.43	-1281.33	-839.85
8.5in Open Hole	5982.00	12292.00	6310.00	5399.38	6601.02	-1281.33	-839.85	2220.15	-3804.00
5.5in Casing Production	16.00	12292.00	12276.00	16.00	6601.02	0.00	0.00	2220.15	-3804.00

RECEIVED  
Office of Oil and Gas  
JUN 15 2018  
WV Department of  
Environmental Protection

07/20/2018





Where energy meets innovation.

# Actual Wellpath Report

OXF-155 513066 AWP Proj: 12292'

Page 10 of 11



REFERENCE WELLPATH IDENTIFICATION			
Operator	EQT	Slot	Slot 513066
Area	Doddridge Co., WV	Well	OXF-155 513066
Field	Doddridge	Wellbore	OXF-155 513066 AWB
Facility	OXF-155 Pad		

TARGETS								
Name	TVD [ft]	North [ft]	East [ft]	Grid East [US ft]	Grid North [US ft]	Latitude	Longitude	Shape
OXF-155 513066 BHL Rev-2	6675.00	2202.25	-3835.00	1625007.97	264767.07	39°13'09.687"N	80°49'24.921"W	point
OXF-155 513066 LP Rev-2	6675.00	-1574.14	-1910.84	1626932.06	260990.82	39°12'32.645"N	80°48'59.773"W	point
OXF-155 Hard Line	7000.00	-29.63	-4.71	1628838.12	262535.27	39°12'48.184"N	80°48'35.846"W	polygon

WELLPATH COMPOSITION - Ref Wellbore: OXF-155 513066 AWB Ref Wellpath: OXF-155 513066 AWP Proj: 12292'					
Start MD [ft]	End MD [ft]	Positional Uncertainty Model	Log Name/Comment	Wellbore	
16.00	3539.00	Gyrodata standard - Drop gyro or Multi-shot	01_Gyrodata MS Gyro <12-1/4"> (103'-3539')	OXF-155 513066 AWB	
3539.00	5912.00	OWSG MWD rev2 - Standard	02 SDI MWD <8-3/4"> (3539')(3583'-5912')	OXF-155 513066 AWB	
5912.00	12257.00	BHI AutoTrak Curve (Short)	03 BHI AT Curve <8-1/2"> (5912')(5955'-12257')	OXF-155 513066 AWB	
12257.00	12292.00	Blind Drilling (std)	Projection to bit	OXF-155 513066 AWB	

RECEIVED  
Office of Oil and Gas

JUN 15 2018

WV Department of  
Environmental Protection

07/20/2018





Where energy meets innovation.

# Actual Wellpath Report

OXF-155 513066 AWP Proj: 12292'  
Page 11 of 11



## REFERENCE WELLPATH IDENTIFICATION

Operator	EQT	Slot	Slot 513066
Area	Doddridge Co., WV	Well	OXF-155 513066
Field	Doddridge	Wellbore	OXF-155 513066 AWB
Facility	OXF-155 Pad		

## WELLPATH COMMENTS

MD [ft]	Inclination [°]	Azimuth [°]	TVD [ft]	Comment
3508.00	0.340	294.690	3507.97	KOP 1=3508' MD
3539.00	1.330	257.710	3538.96	Gyro Tie In=3539' MD
6965.00	43.460	220.530	6106.08	KOP 2=6965' MD
8067.27	90.000	333.459	6684.89	Deepest Point of Well=8067.27' MD / 6684.9' TVD
8069.00	90.150	333.530	6684.89	LP=8069' MD / 6684.89' TVD
12257.00	89.690	334.820	6600.83	Final Survey=12257' MD / 6600.83' TVD
12292.00	89.690	334.820	6601.02	Projection to TD=12292' MD / 6601.02' TVD

RECEIVED  
Office of Oil and Gas

JUN 15 2018

WV Department of  
Environmental Protection

07/20/2018

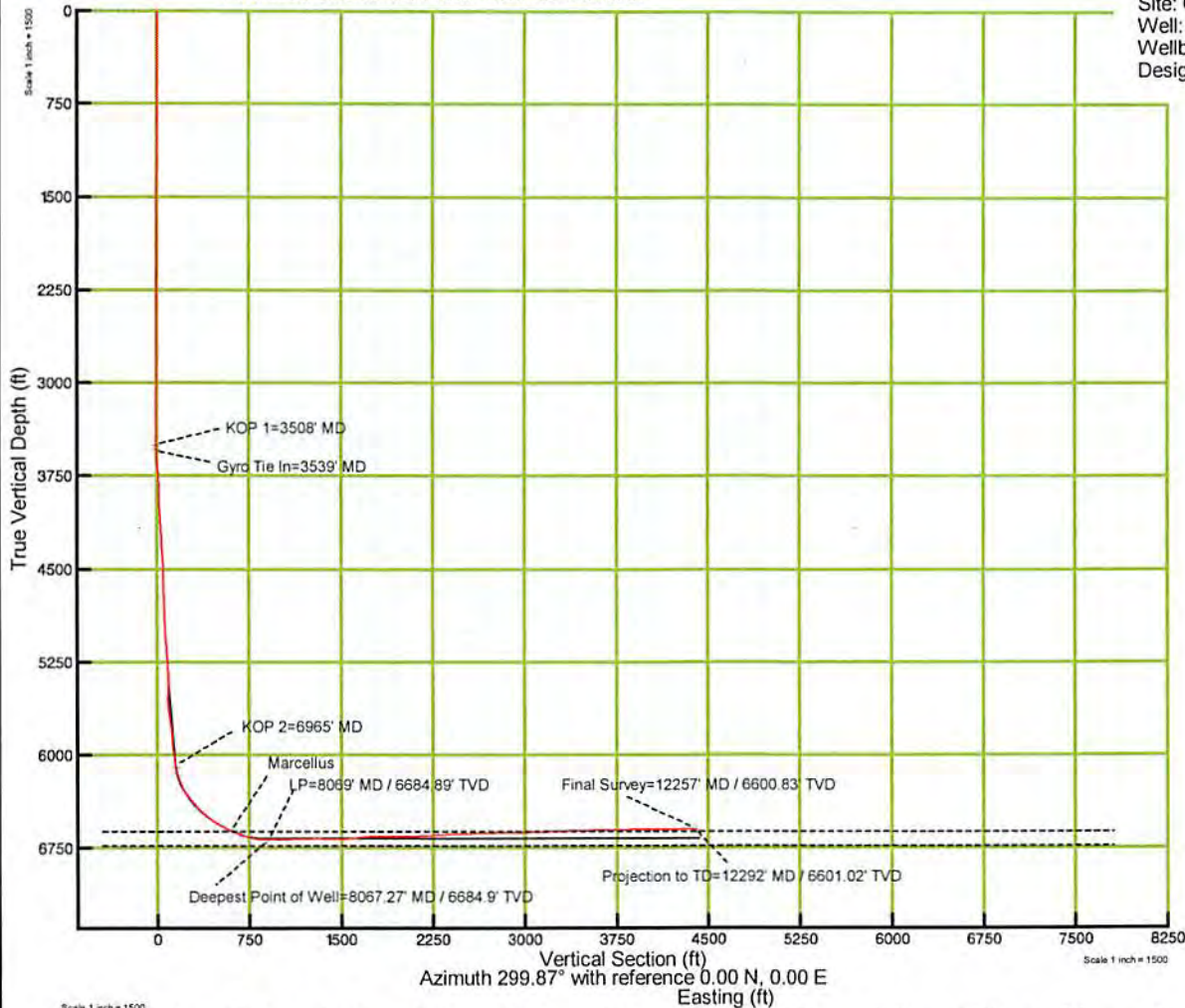




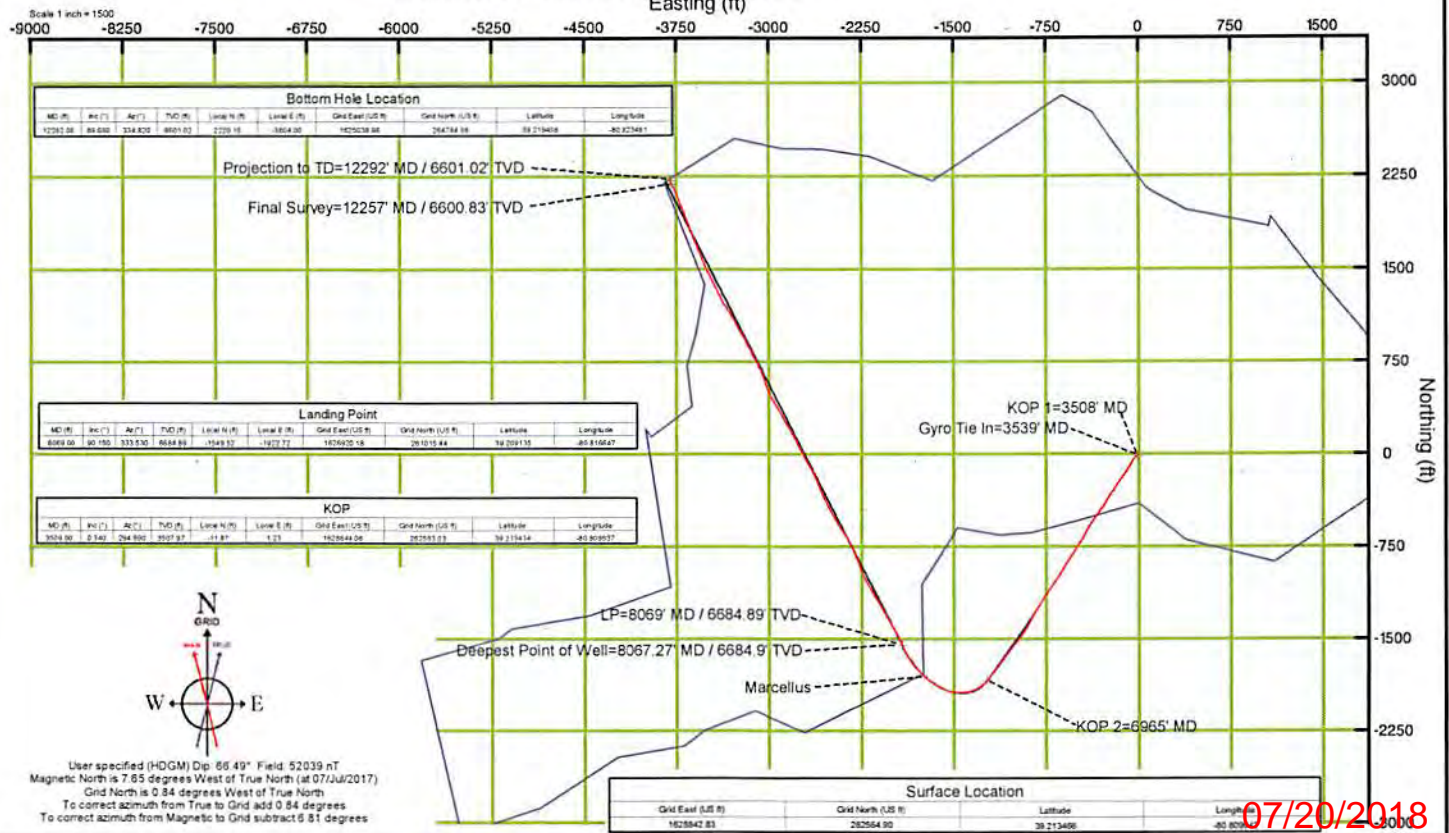
KB Elevation=1215 FT  
Ground Elevation=1199 FT  
All measurements were taken from KB Elevation

# EQT Production - Marcellus

Project: Doddridge County, WV  
Site: OXF-155  
Well: OXF-155 513066  
Wellbore: Main Wellbore  
Design: As-Drilled Surveys



RECEIVED  
Office of Oil and Gas  
**JUN 15 2018**  
WV Department of  
Environmental Protection



07/20/2018