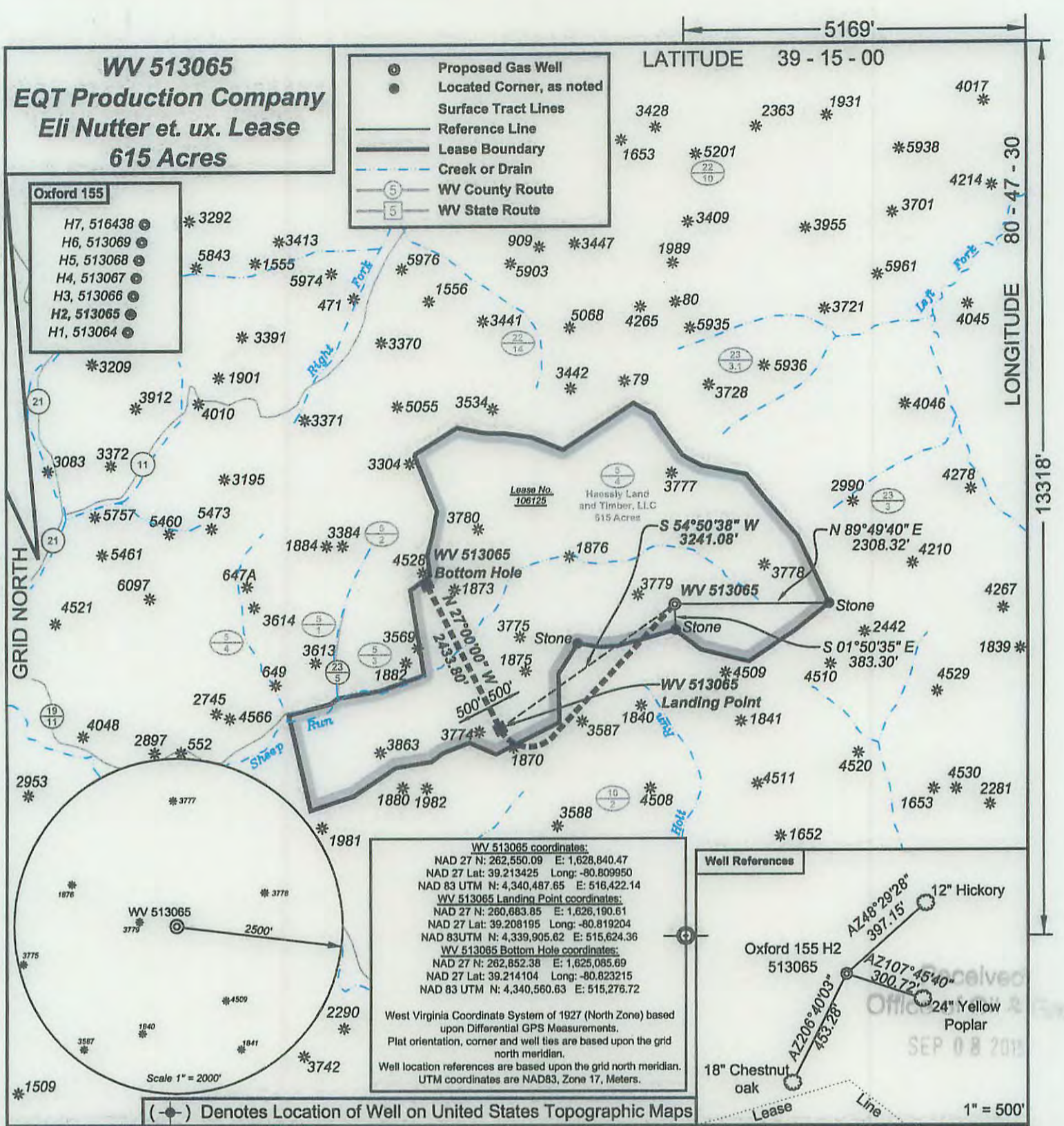


WV 513065
EQT Production Company
Eli Nutter et. ux. Lease
615 Acres

Proposed Gas Well
 Located Corner, as noted
 Surface Tract Lines
 Reference Line
 Lease Boundary
 Creek or Drain
 WV County Route
 WV State Route

LATITUDE 39 - 15 - 00
 LONGITUDE 80 - 47 - 30

- Oxford 155**
- H7, 516438
 - H6, 513069
 - H5, 513068
 - H4, 513067
 - H3, 513066
 - H2, 513065
 - H1, 513064



WV 513065 coordinates:
 NAD 27 N: 262,550.09 E: 1,628,840.47
 NAD 27 Lat: 39.213425 Long: -80.809950
 NAD 83 UTM N: 4,340,487.65 E: 516,422.14

WV 513065 Landing Point coordinates:
 NAD 27 N: 260,683.85 E: 1,626,190.61
 NAD 27 Lat: 39.208195 Long: -80.819204
 NAD 83 UTM N: 4,339,905.62 E: 515,624.36

WV 513065 Bottom Hole coordinates:
 NAD 27 N: 262,852.38 E: 1,625,085.69
 NAD 27 Lat: 39.214104 Long: -80.823215
 NAD 83 UTM N: 4,340,560.63 E: 515,276.72

West Virginia Coordinate System of 1927 (North Zone) based upon Differential GPS Measurements.
 Plat orientation, corner and well ties are based upon the grid north meridian.
 Well location references are based upon the grid north meridian.
 UTM coordinates are NAD83, Zone 17, Meters.

Well References

Oxford 155 H2 513065

12" Hickory
 AZ48°29'28" 397.15'
 AZ107°45'40" 300.72'
 24" Yellow Poplar
 AZ206°40'03" 453.28'
 18" Chestnut oak

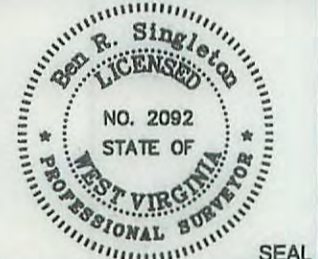
Scale 1" = 500'

(-o-) Denotes Location of Well on United States Topographic Maps



I, the undersigned, hereby certify that this plat is correct to the best of my knowledge and belief and shows all the information required by law and the regulations issued and prescribed by the Department of Environmental Protection.

Ben R. Singleton
 P.S. 2092



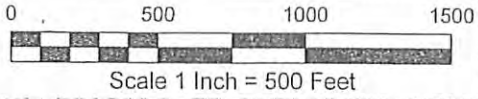
FILE NO: 239-13
 DRAWING NO: Oxford 155 H2
 SCALE: 1" = 2000'
 MINIMUM DEGREE OF ACCURACY: 1:2500
 PROVEN SOURCE OF ELEVATION: NGS CORS Station

STATE OF WEST VIRGINIA
 DEPARTMENT OF ENVIRONMENTAL PROTECTION
OIL AND GAS DIVISION

DATE: August 11 20 15
 OPERATOR'S WELL NO. 513065
 API WELL NO
 47 - 017 - 06756 H2A
 STATE COUNTY PERMIT

WELL TYPE: OIL GAS LIQUID INJECTION WASTE DISPOSAL
 (IF GAS) PRODUCTION: STORAGE DEEP SHALLOW
 LOCATION: ELEVATION: Original 1210.5 Proposed 1199 WATERSHED Sheep Run of South Fork of Hughes River QUADRANGLE: Oxford
 DISTRICT: South West COUNTY: Doddridge
 SURFACE OWNER: Haessly Land & Timber, LLC ACREAGE: 615
 ROYALTY OWNER: Eli Nutter Heirs LEASE NO: 106125 ACREAGE: 615
 PROPOSED WORK: DRILL CONVERT DRILL DEEPER FRACTURE OR STIMULATE PLUG OFF OLD FORMATION
 PERFORATE NEW FORMATION OTHER PHYSICAL CHANGE IN WELL (SPECIFY)
 PLUG AND ABANDON CLEAN OUT AND REPLUG TARGET FORMATION: Marcellus ESTIMATED DEPTH: TVD 6,811

WELL OPERATOR: EQT Production Company DESIGNATED AGENT: Rex C. Ray
 ADDRESS: 115 Professional Place PO Box 280 ADDRESS: 115 Professional Place PO Box 280
 Bridgeport, WV 26330 Bridgeport, WV 26330



Detail Sketch for Wells WV 513064, 513065, 513066, 513067, 513068, 513069, 516483 & 516484

Pullman 7.5' USGS QUADRANGLE		Proposed Disturbance Area	
Projected culvert inventory. (for bid purposes only)	Well Site Location	See Site Plan	
15" minimum diameter culverts	See Site Plan	Proposed Access Road	See Site Plan
24" minimum diameter culverts	See Site Plan	Approximate Total Disturbance	See Site Plan
DRAWN BY: Dale Tomlin PS	DATE: August 13, 2015	FILE NO. 239-13	DRAWING FILE NO. 239-13 Rec Plan.dwg

Note: SEE SITE PLAN OF OXF 155 FOR COMPLETE GRADING & DRAINAGE CONSTRUCTION INCLUDING EROSION & SEDIMENT CONTROL DETAILS, ETC.

Office of Oil & Gas

OCT 01 2015



SURVEYING AND MAPPING SERVICES PERFORMED BY:
ALLEGHENY SURVEYS, INC.
1-800-482-8606
Birch River Office Phone: (304) 649-8606 Fax: (304) 649-8608
237 Birch River Road P.O. Box 438 Birch River, WV 26610

Received
Office of Oil & Gas
OCT 01 2015
MAG
9-30-15
02/12/2016