



Where energy meets innovation.

Actual Wellpath Report

OXF-155 513065 AWP Proj: 11676'

Page 1 of 10



REFERENCE WELLPATH IDENTIFICATION			
Operator	EQT	Slot	Slot 513065
Area	Doddridge Co., WV	Well	OXF-155 513065
Field	Doddridge	Wellbore	OXF-155 513065 AWB
Facility	OXF-155 Pad		

REPORT SETUP INFORMATION			
Projection System	NAD27 / Lambert West Virginia SP, Northern Zone (4701), US feet	Software System	WellArchitect® 5.0
North Reference	Grid	User	Edsaryar
Scale	0.999967	Report Generated	11/Jul/2017 at 00:39
Convergence at slot	0.84° West	Database/Source file	WA_MPL_EASTERNUS_Defn/OXF-155_513065_AWP_Proj_11676_.xml

WELLPATH LOCATION						
	Local coordinates		Grid coordinates		Geographic coordinates	
	North[ft]	East[ft]	Easting[US ft]	Northing[US ft]	Latitude	Longitude
Slot Location	14.82	2.35	1628840.47	262550.09	39°12'48.331"N	80°48'35.819"W
Facility Reference Pt			1628838.12	262535.27	39°12'48.184"N	80°48'35.846"W
Field Reference Pt			0.00	0.00	38°17'12.460"N	86°28'23.077"W

WELLPATH DATUM			
Calculation method	Minimum curvature	Savanna 655 (RKB) to Facility Vertical Datum	1215.00ft
Horizontal Reference Pt	Slot	Savanna 655 (RKB) to Mean Sea Level	1215.00ft
Vertical Reference Pt	Savanna 655 (RKB)	Savanna 655 (RKB) to Mud Line at Slot (Slot 513065)	16.00ft
MD Reference Pt	Savanna 655 (RKB)	Section Origin	N 0.00, E 0.00 ft
Field Vertical Reference	Mean Sea Level	Section Azimuth	274.60°

RECEIVED
Office of Oil and Gas

NOV 22 2017

WV Department of
Environmental Protection

01/05/2018



Where energy meets innovation.

Actual Wellpath Report

OXF-155 513065 AWP Proj: 11676'

Page 2 of 10



REFERENCE WELLPATH IDENTIFICATION			
Operator	EQT	Slot	Slot 513065
Area	Doddridge Co., WV	Well	OXF-155 513065
Field	Doddridge	Wellbore	OXF-155 513065 AWB
Facility	OXF-155 Pad		

WELLPATH DATA (191 stations) † = interpolated/extrapolated station											
MD [ft]	Inclination [°]	Azimuth [°]	TVD [ft]	TVDSS [ft]	Vert Sect [ft]	North [ft]	East [ft]	DLS [°/100ft]	Build Rate [°/100ft]	Turn Rate [°/100ft]	Comments
0.00†	0.000	24.300	0.00	-1215.00	0.00	0.00	0.00	0.00	0.00	0.00	
16.00	0.000	24.300	16.00	-1199.00	0.00	0.00	0.00	0.00	0.00	0.00	
103.00	0.130	24.300	103.00	-1112.00	-0.03	0.09	0.04	0.15	0.15	27.93	
203.00	0.030	234.740	203.00	-1012.00	-0.05	0.18	0.07	0.16	-0.10	-149.56	
303.00	0.080	303.330	303.00	-912.00	0.03	0.20	-0.01	0.07	0.05	68.59	
403.00	0.030	2.160	403.00	-812.00	0.09	0.27	-0.07	0.07	-0.05	58.83	
503.00	0.220	156.560	503.00	-712.00	0.00	0.12	0.01	0.25	0.19	154.40	
603.00	0.330	190.820	603.00	-612.00	-0.06	-0.34	0.03	0.19	0.11	34.26	
703.00	0.350	193.990	703.00	-512.00	0.03	-0.92	-0.10	0.03	0.02	3.17	
803.00	0.390	196.830	802.99	-412.01	0.15	-1.54	-0.27	0.04	0.04	2.84	
903.00	0.280	190.020	902.99	-312.01	0.24	-2.11	-0.41	0.12	-0.11	-6.81	
1003.00	0.260	186.250	1002.99	-212.01	0.27	-2.58	-0.48	0.03	-0.02	-3.77	
1103.00	0.340	179.720	1102.99	-112.01	0.25	-3.10	-0.50	0.09	0.08	-6.53	
1203.00	0.390	167.890	1202.99	-12.01	0.13	-3.73	-0.43	0.09	0.05	-11.83	
1303.00	0.600	158.120	1302.98	87.98	-0.20	-4.55	-0.16	0.23	0.21	-9.77	
1403.00	0.650	160.440	1402.98	187.98	-0.67	-5.57	0.22	0.06	0.05	2.32	
1503.00	0.600	159.250	1502.97	287.97	-1.12	-6.59	0.60	0.05	-0.05	-1.19	
1603.00	0.670	153.860	1602.97	387.97	-1.65	-7.61	1.04	0.09	0.07	-5.39	
1703.00	0.650	154.590	1702.96	487.96	-2.23	-8.64	1.54	0.02	-0.02	0.73	
1803.00	0.340	159.260	1802.96	587.96	-2.64	-9.43	1.89	0.31	-0.31	4.67	
1903.00	0.270	161.980	1902.95	687.95	-2.86	-9.93	2.07	0.07	-0.07	2.72	
2003.00	0.290	160.500	2002.95	787.95	-3.05	-10.40	2.22	0.02	0.02	-1.48	
2103.00	0.290	169.690	2102.95	887.95	-3.22	-10.88	2.35	0.05	0.00	9.19	
2203.00	0.250	164.370	2202.95	987.95	-3.36	-11.34	2.46	0.05	-0.04	-5.32	
2303.00	0.300	152.210	2302.95	1087.95	-3.58	-11.79	2.64	0.08	0.05	-12.16	
2403.00	0.330	157.600	2402.95	1187.95	-3.85	-12.28	2.87	0.04	0.03	5.39	
2503.00	0.260	154.880	2502.95	1287.95	-4.09	-12.76	3.08	0.07	-0.07	-2.72	
2603.00	0.170	153.300	2602.95	1387.95	-4.28	-13.09	3.24	0.09	-0.09	-1.58	
2703.00	0.170	133.070	2702.95	1487.95	-4.47	-13.33	3.41	0.06	0.00	-20.23	
2803.00	0.190	136.680	2802.95	1587.95	-4.71	-13.55	3.64	0.02	0.02	3.61	

RECEIVED
Office of Oil and Gas

NOV 22 2017

WV Department of
Environmental Protection

01/05/2018



Actual Wellpath Report

OXF-155 513065 AWP Proj: 11676'

Page 3 of 10



Where energy meets innovation.

REFERENCE WELLPATH IDENTIFICATION			
Operator	EQT	Slot	Slot 513065
Area	Doddridge Co., WV	Well	OXF-155 513065
Field	Doddridge	Wellbore	OXF-155 513065 AWB
Facility	OXF-155 Pad		

WELLPATH DATA (191 stations)											
MD [ft]	Inclination [°]	Azimuth [°]	TVD [ft]	TVDSS [ft]	Vert Sect [ft]	North [ft]	East [ft]	DLS [°/100ft]	Build Rate [°/100ft]	Turn Rate [°/100ft]	Comments
2903.00	0.190	141.110	2902.94	1687.94	-4.95	-13.80	3.85	0.01	0.00	4.43	
3003.00	0.220	134.340	3002.94	1787.94	-5.21	-14.06	4.10	0.04	0.03	-6.77	
3103.00	0.240	110.270	3102.94	1887.94	-5.56	-14.27	4.43	0.10	0.02	-24.07	
3203.00	0.330	109.980	3202.94	1987.94	-6.04	-14.44	4.90	0.09	0.09	-0.29	
3303.00	0.340	124.640	3302.94	2087.94	-6.57	-14.71	5.41	0.09	0.01	14.66	
3403.00	0.250	121.130	3402.94	2187.94	-7.03	-14.99	5.84	0.09	-0.09	-3.51	
3503.00	0.080	68.110	3502.94	2287.94	-7.28	-15.07	6.09	0.21	-0.17	-53.02	
3603.00	0.140	56.180	3602.94	2387.94	-7.44	-14.98	6.26	0.06	0.06	-11.93	
3703.00	0.090	52.100	3702.94	2487.94	-7.60	-14.86	6.42	0.05	-0.05	-4.08	
3803.00	0.070	233.160	3802.94	2587.94	-7.61	-14.85	6.44	0.16	-0.02	-178.94	
3903.00	0.200	249.520	3902.94	2687.94	-7.40	-14.95	6.22	0.13	0.13	16.36	
4003.00	0.390	282.550	4002.94	2787.94	-6.91	-14.94	5.73	0.25	0.19	33.03	
4103.00	0.530	290.970	4102.93	2887.93	-6.13	-14.70	4.97	0.16	0.14	8.42	
4203.00	0.710	289.360	4202.93	2987.93	-5.08	-14.33	3.95	0.18	0.18	-1.61	
4303.00	0.770	289.230	4302.92	3087.92	-3.84	-13.90	2.73	0.06	0.06	-0.13	
4403.00	0.920	288.230	4402.91	3187.91	-2.41	-13.43	1.33	0.15	0.15	-1.00	
4503.00	1.230	290.100	4502.89	3287.89	-0.59	-12.81	-0.44	0.31	0.31	1.87	
4603.00	1.460	292.310	4602.86	3387.86	1.66	-11.96	-2.62	0.24	0.23	2.21	
4703.00	1.580	289.390	4702.83	3487.83	4.20	-11.01	-5.10	0.14	0.12	-2.92	
4803.00	1.620	291.090	4802.79	3587.79	6.89	-10.05	-7.72	0.06	0.04	1.70	
4903.00	1.760	291.900	4902.75	3687.75	9.71	-8.97	-10.47	0.14	0.14	0.81	
4915.00	1.750	293.960	4914.74	3699.74	10.06	-8.82	-10.80	0.53	-0.08	17.17	KOP 1=4915' MD
4960.00	5.180	250.010	4959.66	3744.66	12.56	-9.24	-13.34	9.12	7.62	-97.67	Gyro Tie In=4960' MD
5003.00	11.590	238.520	5002.18	3787.18	17.82	-12.16	-18.86	15.33	14.91	-26.72	
5047.00	15.340	236.870	5044.96	3829.96	26.00	-17.65	-27.50	8.57	8.52	-3.75	
5091.00	14.830	234.820	5087.44	3872.44	34.93	-24.08	-36.98	1.68	-1.16	-4.66	
5134.00	17.280	230.360	5128.77	3913.77	43.74	-31.32	-46.40	6.38	5.70	-10.37	
5178.00	21.650	226.650	5170.24	3955.24	53.86	-41.07	-57.34	10.32	9.93	-8.43	
5222.00	22.070	224.280	5211.08	3996.08	64.57	-52.56	-69.01	2.22	0.95	-5.39	
5266.00	23.330	220.010	5251.67	4036.67	74.90	-65.15	-80.39	4.71	2.86	-9.70	

RECEIVED
Office of Oil and Gas

NOV 22 2017

WV Department of
Environmental Protection

01/05/2018



Actual Wellpath Report

OXF-155 513065 AWP Proj: 11676'

Page 4 of 10



**BAKER
HUGHES**

Where energy meets innovation.

REFERENCE WELLPATH IDENTIFICATION			
Operator	EQT	Slot	Slot 513065
Area	Doddridge Co., WV	Well	OXF-155 513065
Field	Doddridge	Wellbore	OXF-155 513065 AWB
Facility	OXF-155 Pad		

WELLPATH DATA (191 stations)											
MD [ft]	Inclination [°]	Azimuth [°]	TVD [ft]	TVDSS [ft]	Vert Sect [ft]	North [ft]	East [ft]	DLS [°/100ft]	Build Rate [°/100ft]	Turn Rate [°/100ft]	Comments
5309.00	27.550	217.690	5290.50	4075.50	85.27	-79.55	-91.94	10.08	9.81	-5.40	
5353.00	32.070	218.140	5328.66	4113.66	97.28	-96.80	-105.39	10.29	10.27	1.02	
5397.00	34.700	221.370	5365.40	4150.40	111.24	-115.39	-120.88	7.21	5.98	7.34	
5440.00	37.110	222.340	5400.23	4185.23	126.51	-134.17	-137.71	5.76	5.60	2.26	
5484.00	40.550	222.860	5434.50	4219.50	143.49	-154.47	-156.39	7.85	7.82	1.18	
5528.00	45.550	224.350	5466.65	4251.65	162.41	-176.20	-177.11	11.60	11.36	3.39	
5570.00	50.350	224.630	5494.77	4279.77	182.40	-198.44	-198.96	11.44	11.43	0.67	
5612.00	55.330	225.100	5520.13	4305.13	204.03	-222.15	-222.57	11.89	11.86	1.12	
5655.00	60.460	225.340	5542.98	4327.98	227.74	-247.80	-248.41	11.94	11.93	0.56	
5698.00	66.060	223.950	5562.32	4347.32	252.43	-275.11	-275.38	13.34	13.02	-3.23	
5741.00	71.540	221.050	5577.86	4362.86	277.03	-304.67	-302.44	14.21	12.74	-6.74	
5783.00	75.790	217.670	5589.68	4374.68	299.99	-335.83	-327.98	12.73	10.12	-8.05	
5825.00	74.170	216.490	5600.56	4385.56	321.77	-368.19	-352.43	4.72	-3.86	-2.81	
5869.00	71.270	214.880	5613.63	4398.63	343.46	-402.30	-376.94	7.46	-6.59	-3.66	
5913.00	68.410	213.960	5628.79	4413.79	364.00	-436.37	-400.29	6.79	-6.50	-2.09	
5956.00	67.000	215.640	5645.11	4430.11	384.01	-469.04	-422.99	4.88	-3.28	3.91	
5999.00	66.280	219.740	5662.16	4447.16	405.55	-500.27	-447.12	8.91	-1.67	9.53	
6042.00	68.150	222.080	5678.82	4463.82	429.03	-530.22	-473.08	6.64	4.35	5.44	
6086.00	72.420	223.160	5693.66	4478.66	454.54	-560.69	-501.12	9.98	9.70	2.45	
6130.00	72.370	223.380	5706.96	4491.96	480.75	-591.23	-529.87	0.49	-0.11	0.50	
6173.00	70.260	222.050	5720.74	4505.74	505.89	-621.15	-557.50	5.72	-4.91	-3.09	
6209.00	70.200	220.650	5732.92	4517.92	526.16	-646.59	-579.88	3.66	-0.17	-3.89	
6272.00	70.190	220.820	5754.26	4539.26	561.11	-691.50	-618.56	0.25	-0.02	0.27	
6335.00	70.150	220.340	5775.63	4560.63	595.93	-736.51	-657.11	0.72	-0.06	-0.76	
6398.00	70.130	219.350	5797.04	4582.04	630.12	-782.00	-695.08	1.48	-0.03	-1.57	
6461.00	70.180	218.640	5818.43	4603.43	663.60	-828.06	-732.37	1.06	0.08	-1.13	
6524.00	70.130	218.730	5839.81	4624.81	696.81	-874.32	-769.40	0.16	-0.08	0.14	
6587.00	70.190	219.530	5861.19	4646.19	730.40	-920.28	-806.80	1.20	0.10	1.27	
6650.00	70.160	220.400	5882.56	4667.56	764.70	-965.71	-844.87	1.30	-0.05	1.38	
6713.00	69.960	221.250	5904.05	4689.05	799.70	-1010.52	-883.59	1.31	-0.32	1.35	

RECEIVED
Office of Oil and Gas

NOV 22 2017

WV Department of
Environmental Protection

01/05/2018



Where energy meets innovation.

Actual Wellpath Report

OXF-155 513065 AWP Proj: 11676'

Page 5 of 10



REFERENCE WELLPATH IDENTIFICATION			
Operator	EQT	Slot	Slot 513065
Area	Doddridge Co., WV	Well	OXF-155 513065
Field	Doddridge	Wellbore	OXF-155 513065 AWB
Facility	OXF-155 Pad		

WELLPATH DATA (191 stations)											
MD [ft]	Inclination [°]	Azimuth [°]	TVD [ft]	TVDSS [ft]	Vert Sect [ft]	North [ft]	East [ft]	DLS [°/100ft]	Build Rate [°/100ft]	Turn Rate [°/100ft]	Comments
6776.00	70.170	222.890	5925.53	4710.53	835.73	-1054.48	-923.27	2.47	0.33	2.60	
6839.00	70.160	224.070	5946.91	4731.91	872.92	-1097.49	-964.05	1.76	-0.02	1.87	
6902.00	70.190	223.690	5968.27	4753.27	910.45	-1140.20	-1005.13	0.57	0.05	-0.60	
6965.00	70.130	222.720	5989.65	4774.65	947.42	-1183.40	-1045.70	1.45	-0.10	-1.54	
7028.00	70.160	221.430	6011.05	4796.05	983.47	-1227.38	-1085.40	1.93	0.05	-2.05	
7091.00	70.120	221.510	6032.45	4817.45	1019.02	-1271.78	-1124.64	0.14	-0.06	0.13	
7154.00	70.120	222.470	6053.88	4838.88	1055.00	-1315.81	-1164.28	1.43	0.00	1.52	
7218.00	70.130	221.760	6075.64	4860.64	1091.65	-1360.46	-1204.64	1.04	0.02	-1.11	
7281.00	70.190	220.550	6097.02	4882.02	1126.95	-1405.08	-1243.64	1.81	0.10	-1.92	
7344.00	70.150	219.760	6118.39	4903.39	1161.41	-1450.37	-1281.85	1.18	-0.06	-1.25	
7407.00	70.230	218.460	6139.74	4924.74	1194.99	-1496.36	-1319.24	1.95	0.13	-2.06	
7470.00	70.030	217.300	6161.16	4946.16	1227.50	-1543.13	-1355.62	1.76	-0.32	-1.84	
7533.00	69.900	216.540	6182.74	4967.74	1259.14	-1590.45	-1391.18	1.15	-0.21	-1.21	
7596.00	70.250	215.950	6204.21	4989.21	1290.22	-1638.21	-1426.19	1.04	0.56	-0.94	
7660.00	70.380	215.810	6225.77	5010.77	1321.50	-1687.04	-1461.51	0.29	0.20	-0.22	
7723.00	70.620	216.610	6246.80	5031.80	1352.63	-1734.96	-1496.59	1.26	0.38	1.27	
7786.00	70.970	217.180	6267.52	5052.52	1384.42	-1782.53	-1532.31	1.02	0.56	0.90	
7849.00	69.500	220.910	6288.83	5073.83	1417.94	-1828.58	-1569.64	6.04	-2.33	5.92	
7913.00	69.150	223.660	6311.43	5096.43	1454.53	-1872.87	-1609.92	4.06	-0.55	4.30	
7976.00	69.140	223.530	6333.86	5118.86	1491.58	-1915.51	-1650.52	0.19	-0.02	-0.21	
8039.00	69.130	225.400	6356.30	5141.30	1529.31	-1957.52	-1691.75	2.77	-0.02	2.97	
8102.00	69.090	227.280	6378.77	5163.77	1568.49	-1998.15	-1734.33	2.79	-0.06	2.98	
8134.00	69.180	227.590	6390.16	5175.16	1588.82	-2018.38	-1756.35	0.95	0.28	0.97	KOP 2=8134' MD
8166.00	69.370	230.530	6401.49	5186.49	1609.78	-2037.99	-1778.96	8.61	0.59	9.19	
8197.00	69.340	233.710	6412.42	5197.42	1631.18	-2055.79	-1801.85	9.60	-0.10	10.26	
8228.00	69.210	236.760	6423.40	5208.40	1653.59	-2072.32	-1825.67	9.21	-0.42	9.84	
8259.00	69.210	239.230	6434.40	5219.40	1676.85	-2087.68	-1850.24	7.45	0.00	7.97	
8291.00	69.500	241.410	6445.68	5230.68	1701.59	-2102.51	-1876.26	6.44	0.91	6.81	
8322.00	69.630	243.570	6456.51	5241.51	1726.20	-2115.93	-1902.02	6.54	0.42	6.97	
8354.00	69.700	245.550	6467.63	5252.63	1752.17	-2128.81	-1929.11	5.81	0.22	6.19	

RECEIVED
Office of Oil and Gas

NOV 22 2017

WV Department of
Environmental Protection

01/05/2018



Actual Wellpath Report

OXF-155 513065 AWP Proj: 11676'

Page 6 of 10



Where energy meets innovation.

REFERENCE WELLPATH IDENTIFICATION			
Operator	EQT	Slot	Slot 513065
Area	Doddridge Co., WV	Well	OXF-155 513065
Field	Doddridge	Wellbore	OXF-155 513065 AWP
Facility	OXF-155 Pad		

WELLPATH DATA (191 stations)											
MD [ft]	Inclination [°]	Azimuth [°]	TVD [ft]	TVDSS [ft]	Vert Sect [ft]	North [ft]	East [ft]	DLS [°/100ft]	Build Rate [°/100ft]	Turn Rate [°/100ft]	Comments
8385.00	69.700	248.010	6478.39	5263.39	1777.88	-2140.28	-1955.83	7.44	0.00	7.94	
8417.00	70.120	249.870	6489.38	5274.38	1804.97	-2151.07	-1983.87	5.61	1.31	5.81	
8449.00	70.660	252.290	6500.12	5285.12	1832.61	-2160.85	-2012.39	7.32	1.69	7.56	
8480.00	71.460	254.360	6510.18	5295.18	1859.93	-2169.26	-2040.47	6.82	2.58	6.68	
8512.00	72.050	256.450	6520.20	5305.20	1888.63	-2176.92	-2069.88	6.47	1.84	6.53	
8543.00	72.560	258.590	6529.63	5314.63	1916.86	-2183.30	-2098.72	6.78	1.65	6.90	
8575.00	72.950	261.770	6539.12	5324.12	1946.45	-2188.51	-2128.83	9.57	1.22	9.94	
8607.00	73.010	265.060	6548.48	5333.48	1976.47	-2192.01	-2159.22	9.83	0.19	10.28	
8639.00	73.100	268.090	6557.81	5342.81	2006.77	-2193.84	-2189.77	9.06	0.28	9.47	
8670.00	73.110	272.190	6566.83	5351.83	2036.34	-2193.77	-2219.42	12.65	0.03	13.23	
8701.00	72.500	276.990	6575.99	5360.99	2065.94	-2191.40	-2248.93	14.92	-1.97	15.48	
8733.00	72.400	281.240	6585.65	5370.65	2096.35	-2186.57	-2279.05	12.67	-0.31	13.28	
8765.00	73.140	286.170	6595.13	5380.13	2126.52	-2179.33	-2308.73	14.89	2.31	15.41	
8796.00	74.420	291.080	6603.80	5388.80	2155.38	-2169.82	-2336.93	15.76	4.13	15.84	
8827.00	75.350	295.820	6611.88	5396.88	2183.69	-2157.92	-2364.37	15.06	3.00	15.29	
8858.00	75.630	299.640	6619.65	5404.65	2211.29	-2143.95	-2390.93	11.96	0.90	12.32	
8890.00	75.640	302.930	6627.59	5412.59	2238.98	-2127.86	-2417.42	9.96	0.03	10.28	
8921.00	75.730	306.210	6635.26	5420.26	2265.00	-2110.82	-2442.15	10.26	0.29	10.58	
8953.00	76.520	308.220	6642.94	5427.94	2291.16	-2092.03	-2466.89	6.58	2.47	6.28	
8984.00	77.210	310.150	6649.98	5434.98	2316.02	-2072.95	-2490.29	6.46	2.23	6.23	
9016.00	78.600	313.140	6656.69	5441.69	2340.98	-2052.16	-2513.66	10.12	4.34	9.34	
9048.00	80.140	315.470	6662.59	5447.59	2365.18	-2030.20	-2536.17	8.62	4.81	7.28	
9079.00	81.570	318.320	6667.52	5452.52	2387.81	-2007.85	-2557.08	10.18	4.61	9.19	
9111.00	82.350	320.920	6671.99	5456.99	2410.21	-1983.72	-2577.60	8.41	2.44	8.13	
9142.00	83.490	324.310	6675.82	5460.82	2430.78	-1959.28	-2596.28	11.46	3.68	10.94	
9174.00	84.360	327.390	6679.20	5464.20	2450.70	-1932.95	-2614.14	9.95	2.72	9.63	
9205.00	85.870	330.490	6681.84	5466.84	2468.70	-1906.49	-2630.07	11.09	4.87	10.00	
9237.00	87.380	333.130	6683.73	5468.73	2486.00	-1878.34	-2645.16	9.49	4.72	8.25	
9264.00	88.060	334.160	6684.80	5469.80	2499.87	-1854.17	-2657.13	4.57	2.52	3.81	
9300.00	89.450	335.430	6685.58	5470.58	2517.76	-1821.60	-2672.46	5.23	3.86	3.53	LP=9300' MD / 6685.58' TVD

RECEIVED
Office of Oil and Gas

NOV 22 2017

WV Department of
Environmental Protection

01/05/2018



Where energy meets innovation.

Actual Wellpath Report

OXF-155 513065 AWP Proj: 11676'

Page 7 of 10



REFERENCE WELLPATH IDENTIFICATION			
Operator	EQT	Slot	Slot 513065
Area	Doddridge Co., WV	Well	OXF-155 513065
Field	Doddridge	Wellbore	OXF-155 513065 AWB
Facility	OXF-155 Pad		

WELLPATH DATA (191 stations) † = interpolated/extrapolated station											
MD [ft]	Inclination [°]	Azimuth [°]	TVD [ft]	TVDSS [ft]	Vert Sect [ft]	North [ft]	East [ft]	DLS [°/100ft]	Build Rate [°/100ft]	Turn Rate [°/100ft]	Comments
9332.00	89.850	336.060	6685.78	5470.78	2533.20	-1792.43	-2685.61	2.33	1.25	1.97	
9337.22†	90.000	336.148	6685.79	5470.79	2535.69	-1787.66	-2687.72	3.33	2.87	1.68	Deepest Point of Well=9337.22' MD / 6685.79' TVD
9363.00	90.740	336.580	6685.62	5470.62	2547.89	-1764.04	-2698.06	3.33	2.87	1.68	
9425.00	91.600	334.890	6684.35	5469.35	2577.81	-1707.53	-2723.53	3.06	1.39	-2.73	
9488.00	91.690	330.960	6682.55	5467.55	2610.87	-1651.47	-2752.19	6.24	0.14	-6.24	
9550.00	91.480	330.110	6680.83	5465.83	2645.59	-1597.51	-2782.67	1.41	-0.34	-1.37	
9613.00	91.320	329.010	6679.29	5464.29	2681.75	-1543.21	-2814.58	1.76	-0.25	-1.75	
9676.00	92.120	328.820	6677.40	5462.40	2718.48	-1489.28	-2847.09	1.31	1.27	-0.30	
9738.00	91.850	328.300	6675.25	5460.25	2754.94	-1436.42	-2879.41	0.94	-0.44	-0.84	
9801.00	92.000	331.870	6673.14	5458.14	2790.61	-1381.85	-2910.81	5.67	0.24	5.67	
9865.00	92.310	332.140	6670.73	5455.73	2825.06	-1325.38	-2940.83	0.64	0.48	0.42	
9928.00	92.430	335.380	6668.12	5453.12	2857.33	-1268.93	-2968.65	5.14	0.19	5.14	
9992.00	92.950	337.280	6665.12	5450.12	2887.60	-1210.38	-2994.32	3.07	0.81	2.97	
10055.00	93.600	337.170	6661.52	5446.52	2916.52	-1152.39	-3018.67	1.05	1.03	-0.17	
10118.00	93.330	334.770	6657.71	5442.71	2946.65	-1094.96	-3044.27	3.83	-0.43	-3.81	
10181.00	91.510	331.880	6655.05	5440.05	2979.33	-1038.72	-3072.53	5.42	-2.89	-4.59	
10244.00	91.570	330.310	6653.36	5438.36	3014.09	-983.59	-3102.97	2.49	0.10	-2.49	
10308.00	91.350	330.430	6651.73	5436.73	3050.08	-927.98	-3134.60	0.39	-0.34	0.19	
10372.00	91.290	332.100	6650.25	5435.25	3085.24	-871.87	-3165.36	2.61	-0.09	2.61	
10435.00	91.940	330.130	6648.48	5433.48	3119.98	-816.74	-3195.78	3.29	1.03	-3.13	
10498.00	91.380	329.390	6646.65	5431.65	3155.96	-762.33	-3227.49	1.47	-0.89	-1.17	
10562.00	90.680	332.850	6645.50	5430.50	3191.25	-706.31	-3258.39	5.51	-1.09	5.41	
10625.00	91.940	335.190	6644.06	5429.06	3223.29	-649.70	-3285.98	4.22	2.00	3.71	
10688.00	93.020	333.600	6641.33	5426.33	3254.95	-592.94	-3313.18	3.05	1.71	-2.52	
10752.00	93.970	330.740	6637.43	5422.43	3289.21	-536.45	-3343.00	4.70	1.48	-4.47	
10815.00	95.150	328.450	6632.42	5417.42	3325.23	-482.29	-3374.78	4.08	1.87	-3.63	
10878.00	92.520	326.460	6628.21	5413.21	3363.18	-429.31	-3408.59	5.23	-4.17	-3.16	
10941.00	91.140	327.220	6626.20	5411.20	3401.74	-376.60	-3443.03	2.50	-2.19	1.21	
11005.00	90.680	329.930	6625.18	5410.18	3439.37	-322.00	-3476.39	4.29	-0.72	4.23	
11068.00	90.920	336.580	6624.30	5409.30	3472.12	-265.78	-3504.72	10.56	0.38	10.56	

RECEIVED
Office of Oil and Gas

NOV 22 2017

WV Department of
Environmental Protection

01/05/2018



Actual Wellpath Report

OXF-155 513065 AWP Proj: 11676'

Page 8 of 10



**BAKER
HUGHES**

Where energy meets innovation.

REFERENCE WELLPATH IDENTIFICATION

Operator	EQT	Slot	Slot 513065
Area	Doddridge Co., WV	Well	OXF-155 513065
Field	Doddridge	Wellbore	OXF-155 513065 AWB
Facility	OXF-155 Pad		

WELLPATH DATA (191 stations)

MD [ft]	Inclination [°]	Azimuth [°]	TVD [ft]	TVDSS [ft]	Vert Sect [ft]	North [ft]	East [ft]	DLS [°/100ft]	Build Rate [°/100ft]	Turn Rate [°/100ft]	Comments
11131.00	89.540	337.450	6624.05	5409.05	3501.29	-207.78	-3529.32	2.59	-2.19	1.38	
11195.00	90.340	339.100	6624.11	5409.11	3529.67	-148.33	-3553.01	2.87	1.25	2.58	
11257.00	91.080	336.540	6623.35	5408.35	3557.60	-90.93	-3576.42	4.30	1.19	-4.13	
11320.00	91.630	334.070	6621.86	5406.86	3588.42	-33.71	-3602.73	4.02	0.87	-3.92	
11383.00	91.020	335.390	6620.40	5405.40	3619.78	23.24	-3629.61	2.31	-0.97	2.10	
11447.00	91.380	336.840	6619.06	5404.06	3650.30	81.75	-3655.52	2.33	0.56	2.27	
11510.00	92.490	336.890	6616.93	5401.93	3679.60	139.65	-3680.26	1.76	1.76	0.08	
11573.00	93.170	334.600	6613.82	5398.82	3709.97	197.01	-3706.10	3.79	1.08	-3.63	
11637.00	91.450	329.630	6611.24	5396.24	3744.30	253.51	-3736.00	8.21	-2.69	-7.77	
11651.00	91.820	329.550	6610.84	5395.84	3752.33	265.58	-3743.09	2.70	2.64	-0.57	Final Survey=11651' MD / 6610.84' TVD
11676.00	91.820	329.550	6610.05	5395.05	3766.68	287.12	-3755.75	0.00	0.00	0.00	Projection to TD=11676' MD / 6610.05' TVD

HOLE & CASING SECTIONS

- Ref Wellbore: OXF-155 513065 AWB Ref Wellpath: OXF-155 513065 AWP Proj: 11676'

String/Diameter	Start MD [ft]	End MD [ft]	Interval [ft]	Start TVD [ft]	End TVD [ft]	Start N/S [ft]	Start E/W [ft]	End N/S [ft]	End E/W [ft]
20in Conductor	16.00	56.00	40.00	16.00	56.00	0.00	0.00	0.02	0.01
17.5in Open Hole	56.00	572.00	516.00	56.00	572.00	0.02	0.01	-0.18	0.05
13.375in Casing Surface	16.00	572.00	556.00	16.00	572.00	0.00	0.00	-0.18	0.05
12.25in Open Hole	572.00	3469.00	2897.00	572.00	3468.94	-0.18	0.05	-15.08	6.04
9.625in Casing Intermediate	16.00	3469.00	3453.00	16.00	3468.94	0.00	0.00	-15.08	6.04
8.75in Open Hole	3469.00	6247.00	2778.00	3468.94	5745.79	-15.08	6.04	-673.69	-603.20
8.5in Open Hole	6247.00	11676.00	5429.00	5745.79	6610.05	-673.69	-603.20	287.12	-3755.75
5.5in Casing Production	16.00	11676.00	11660.00	16.00	6610.05	0.00	0.00	287.12	-3755.75

RECEIVED
Office of Oil and Gas

NOV 22 2017

WV Department of
Environmental Protection

01/05/2018



Where energy meets innovation.

Actual Wellpath Report

OXF-155 513065 AWP Proj: 11676'

Page 9 of 10



REFERENCE WELLPATH IDENTIFICATION			
Operator	EQT	Slot	Slot 513065
Area	Doddridge Co., WV	Well	OXF-155 513065
Field	Doddridge	Wellbore	OXF-155 513065 AWB
Facility	OXF-155 Pad		

TARGETS								
Name	TVD [ft]	North [ft]	East [ft]	Grid East [US ft]	Grid North [US ft]	Latitude	Longitude	Shape
OXF-155 513065 BHL Rev-2	6675.00	302.30	-3754.91	1625085.69	262852.38	39°12'50.775"N	80°49'23.575"W	point
OXF-155 513065 LP Rev-2	6675.00	-1866.31	-2649.95	1626190.61	260683.85	39°12'29.504"N	80°49'09.134"W	point
OXF-155 Hard Line	7000.00	-14.82	-2.35	1628838.12	262535.27	39°12'48.184"N	80°48'35.846"W	polygon

WELLPATH COMPOSITION - Ref Wellbore: OXF-155 513065 AWB Ref Wellpath: OXF-155 513065 AWP Proj: 11676'					
Start MD [ft]	End MD [ft]	Positional Uncertainty Model	Log Name/Comment	Wellbore	
16.00	4960.00	Gyrodatta standard - Drop gyro or Multi-shot	01_Gyrodatta MS Gyro <8-3/4"> (103'-4960')	OXF-155 513065 AWB	
4960.00	6173.00	OWSG MWD rev2 - Standard	02_SDI MWD <8-3/4"> (4960')(5003'-6173')	OXF-155 513065 AWB	
6173.00	11651.00	BHI AutoTrak Curve (Short)	03_BHI AT Curve <8-1/2"> (6173')(6209'-11651')	OXF-155 513065 AWB	
11651.00	11676.00	Blind Drilling (std)	Projection to bit	OXF-155 513065 AWB	

RECEIVED
Office of Oil and Gas

NOV 22 2017

WV Department of
Environmental Protection

01/05/2018



Where energy meets innovation.

Actual Wellpath Report

OXF-155 513065 AWP Proj: 11676'

Page 10 of 10



REFERENCE WELLPATH IDENTIFICATION			
Operator	EQT	Slot	Slot 513065
Area	Doddridge Co., WV	Well	OXF-155 513065
Field	Doddridge	Wellbore	OXF-155 513065 AWB
Facility	OXF-155 Pad		

WELLPATH COMMENTS				
MD [ft]	Inclination [°]	Azimuth [°]	TVD [ft]	Comment
4915.00	1.750	293.960	4914.74	KOP 1=4915' MD
4960.00	5.180	250.010	4959.66	Gyro Tie In=4960' MD
8134.00	69.180	227.590	6390.16	KOP 2=8134' MD
9300.00	89.450	335.430	6685.58	LP=9300' MD / 6685.58' TVD
9337.22	90.000	336.148	6685.79	Deepest Point of Well=9337.22' MD / 6685.79' TVD
11651.00	91.820	329.550	6610.84	Final Survey=11651' MD / 6610.84' TVD
11676.00	91.820	329.550	6610.05	Projection to TD=11676' MD / 6610.05' TVD

RECEIVED
Office of Oil and Gas

NOV 22 2017

WV Department of
Environmental Protection

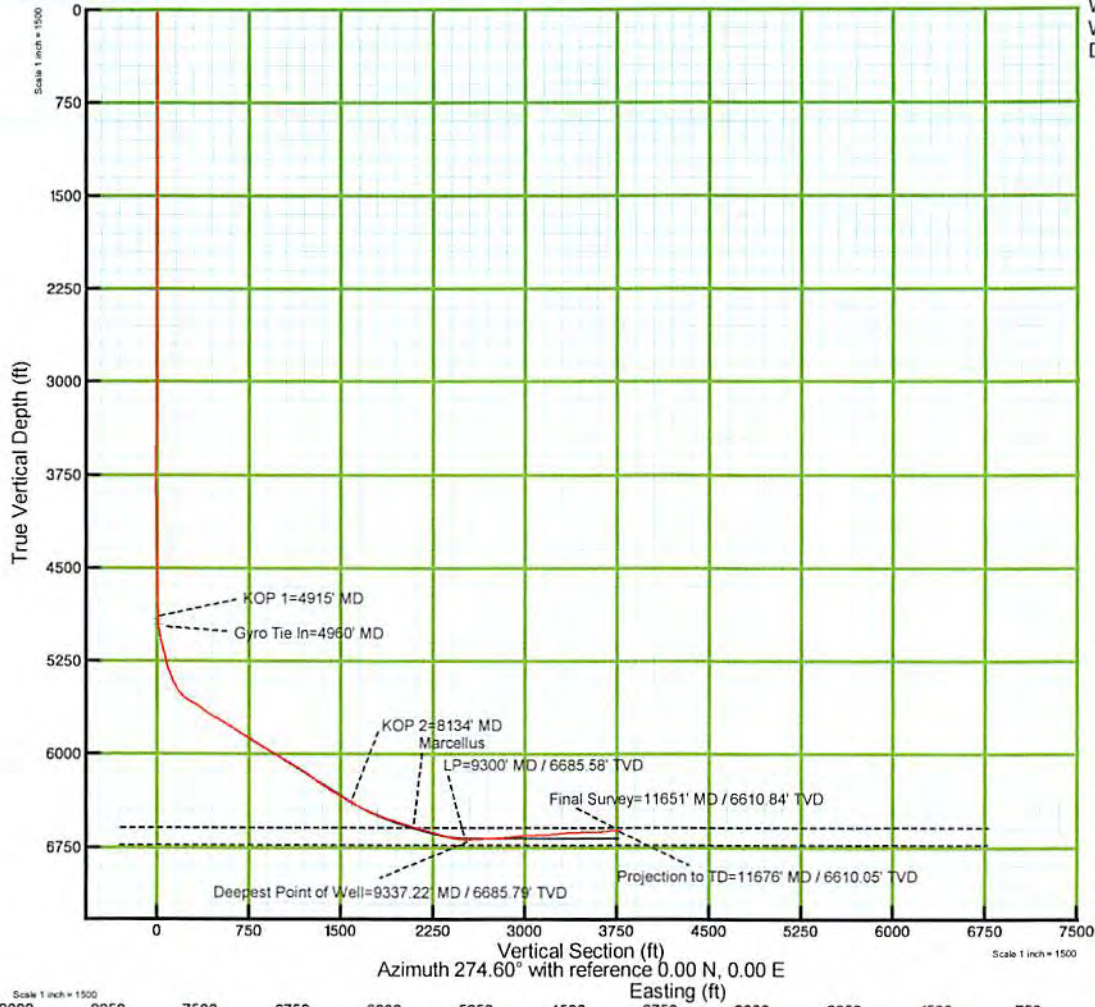
01/05/2018



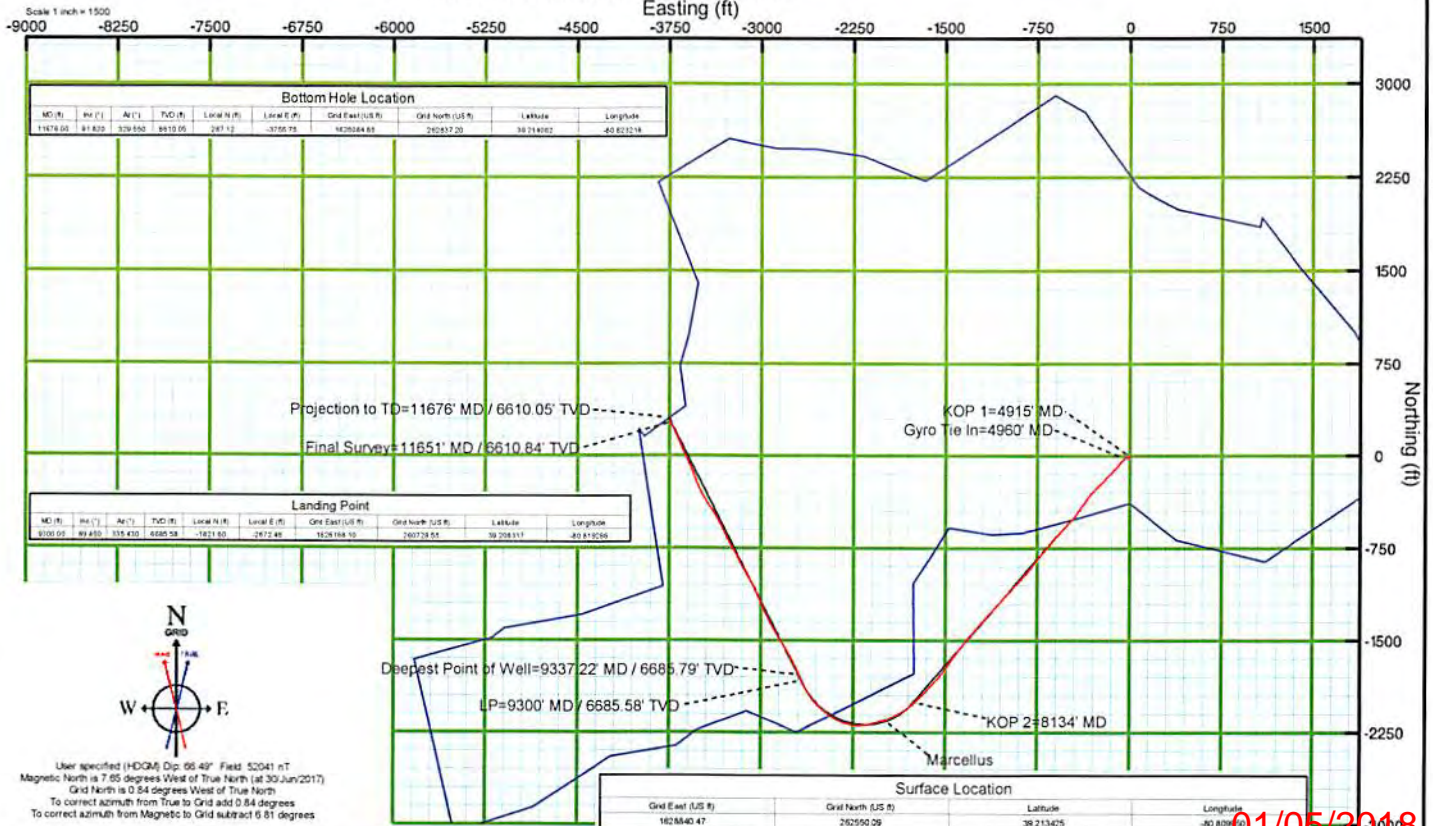
EQT Production - Marcellus

KB Elevation=1215 FT
 Ground Elevation=1199 FT
 All measurements were taken from KB Elevation

Project: Doddridge County, WV
 Site: OXF-155
 Well: OXF-155 513065
 Wellbore: Main Wellbore
 Design: As-Drilled Surveys



RECEIVED
 Office of Oil and Gas
 NOV 22 2017
 WV Department of
 Environmental Protection



User specified (HDMI) Dip: 66.49° Field: 52041 nT
 Magnetic North is 7.66 degrees West of True North (at 30/June/2017)
 Grid North is 0.84 degrees West of True North
 To correct azimuth from True to Grid add 0.84 degrees
 To correct azimuth from Magnetic to Grid subtract 6.81 degrees

01/05/2018