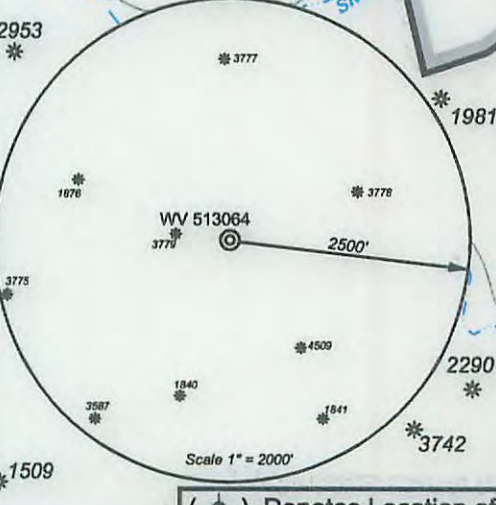
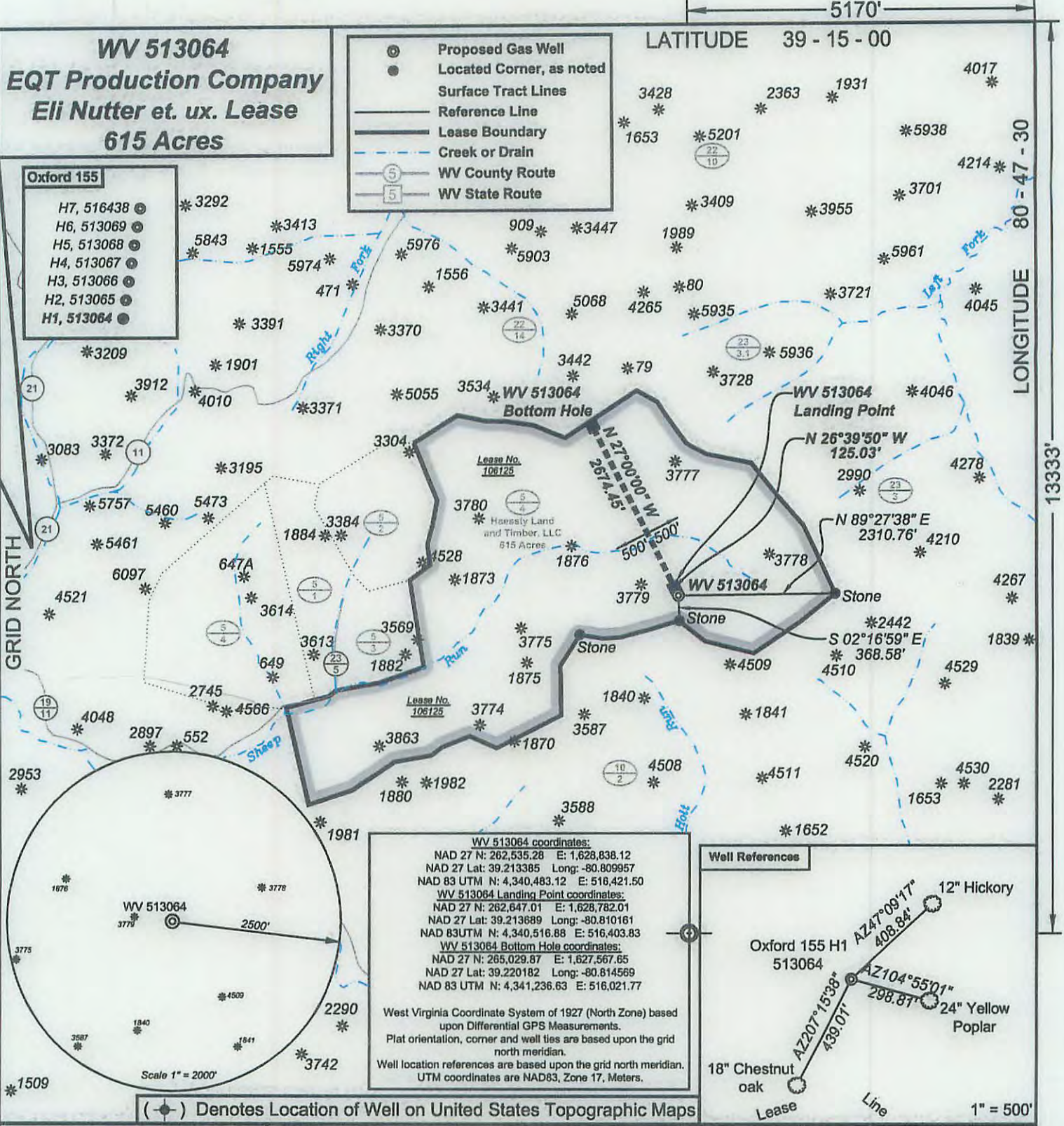


**WV 513064**  
**EQT Production Company**  
**Eli Nutter et. ux. Lease**  
**615 Acres**

- Oxford 155**
- H7, 516438
  - H6, 513069
  - H5, 513068
  - H4, 513067
  - H3, 513066
  - H2, 513065
  - H1, 513064

Proposed Gas Well  
 Located Corner, as noted  
 Surface Tract Lines  
 Reference Line  
 Lease Boundary  
 Creek or Drain  
 WV County Route  
 WV State Route

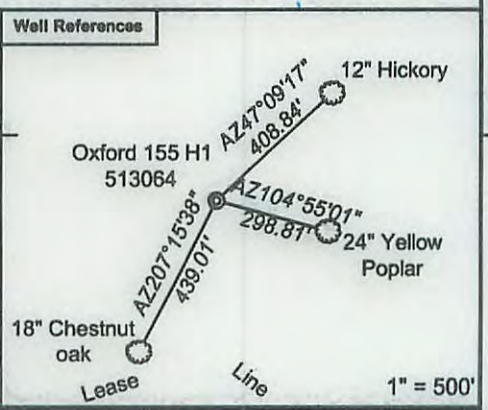


**WV 513064 coordinates:**  
 NAD 27 N: 262,535.28 E: 1,628,838.12  
 NAD 27 Lat: 39.213385 Long: -80.809957  
 NAD 83 UTM N: 4,340,483.12 E: 516,421.50

**WV 513064 Landing Point coordinates:**  
 NAD 27 N: 262,647.01 E: 1,628,782.01  
 NAD 27 Lat: 39.213689 Long: -80.810181  
 NAD 83 UTM N: 4,340,516.88 E: 516,403.83

**WV 513064 Bottom Hole coordinates:**  
 NAD 27 N: 265,029.87 E: 1,627,567.65  
 NAD 27 Lat: 39.220182 Long: -80.814569  
 NAD 83 UTM N: 4,341,236.63 E: 516,021.77

West Virginia Coordinate System of 1927 (North Zone) based upon Differential GPS Measurements.  
 Plat orientation, corner and well ties are based upon the grid north meridian.  
 Well location references are based upon the grid north meridian.  
 UTM coordinates are NAD83, Zone 17, Meters.

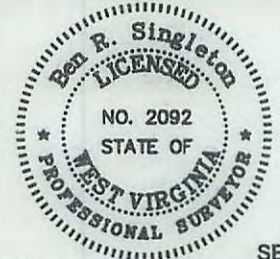


(●) Denotes Location of Well on United States Topographic Maps



*I, the undersigned, hereby certify that this plat is correct to the best of my knowledge and belief and shows all the information required by law and the regulations issued and prescribed by the Department of Environmental Protection.*

*Ben R. Singleton*  
 P.S. 2092



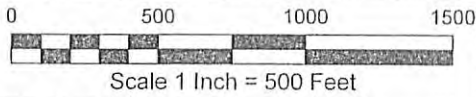
FILE NO: 239-13  
 DRAWING NO: Oxford 155 H1  
 SCALE: 1" = 2000'  
 MINIMUM DEGREE OF ACCURACY: 1:2500  
 PROVEN SOURCE OF ELEVATION: NGS CORS Station

**STATE OF WEST VIRGINIA**  
 DEPARTMENT OF ENVIRONMENTAL PROTECTION  
**OIL AND GAS DIVISION**

DATE: August 11 20 15  
 OPERATOR'S WELL NO. 513064  
 API WELL NO  
 47 - 017 - 06755 HGA  
 STATE COUNTY PERMIT

WELL TYPE:  OIL  GAS  LIQUID INJECTION  WASTE DISPOSAL  
 (IF GAS) PRODUCTION:  STORAGE  DEEP  SHALLOW  
 LOCATION: ELEVATION: Original 1210 Proposed 1199 WATERSHED: Sheep Run of South Fork of Hughes River QUADRANGLE: Oxford  
 DISTRICT: South West COUNTY: Doddridge  
 SURFACE OWNER: Haessly Land & Timber, LLC ACREAGE: 615  
 ROYALTY OWNER: Eli Nutter Heirs LEASE NO: 106125 ACREAGE: 615  
 PROPOSED WORK:  DRILL  CONVERT  DRILL DEEPER  FRACTURE OR STIMULATE  PLUG OFF OLD FORMATION  
 PERFORATE NEW FORMATION  OTHER PHYSICAL CHANGE IN WELL (SPECIFY)  
 PLUG AND ABANDON  CLEAN OUT AND REPLUG TARGET FORMATION: Marcellus ESTIMATED DEPTH: TVD 6,611

WELL OPERATOR: EQT Production Company DESIGNATED AGENT: Rex C. Ray  
 ADDRESS: 115 Professional Place PO Box 280 ADDRESS: 115 Professional Place PO Box 280  
 Bridgeport, WV 26330 Bridgeport, WV 26330



Detail Sketch for Wells WV 513064, 513065, 513066, 513067, 513068, 513069, 516483 & 516484

Pullman 7.5' USGS QUADRANGLE		Proposed Disturbance Area		Note: SEE SITE PLAN OF OXF 155 FOR COMPLETE GRADING & DRAINAGE CONSTRUCTION INCLUDING EROSION & SEDIMENT CONTROL DETAILS. Received Office of Oil & Gas OCT 01 2015 MAC 9/30/15
Projected culvert inventory. (for bid purposes only)		Well Site Location	See Site Plan	
15" minimum diameter culverts	See Site Plan	Proposed Access Road	See Site Plan	
24" minimum diameter culverts	See Site Plan	Approximate Total Disturbance	See Site Plan	
DRAWN BY: Dale Tomlin PS	DATE: August 13, 2015	FILE NO. 239-13	DRAWING FILE NO. 239-13 Rec Plan.dwg	



SURVEYING AND MAPPING SERVICES PERFORMED BY:  
**ALLEGHENY SURVEYS, INC.**  
 1-800-482-8606  
 Birch River Office Phone: (304) 649-8606 237 Birch River Road P.O. Box 438  
 Fax: (304) 649-8608 Birch River, WV 26610

02/12/2016