

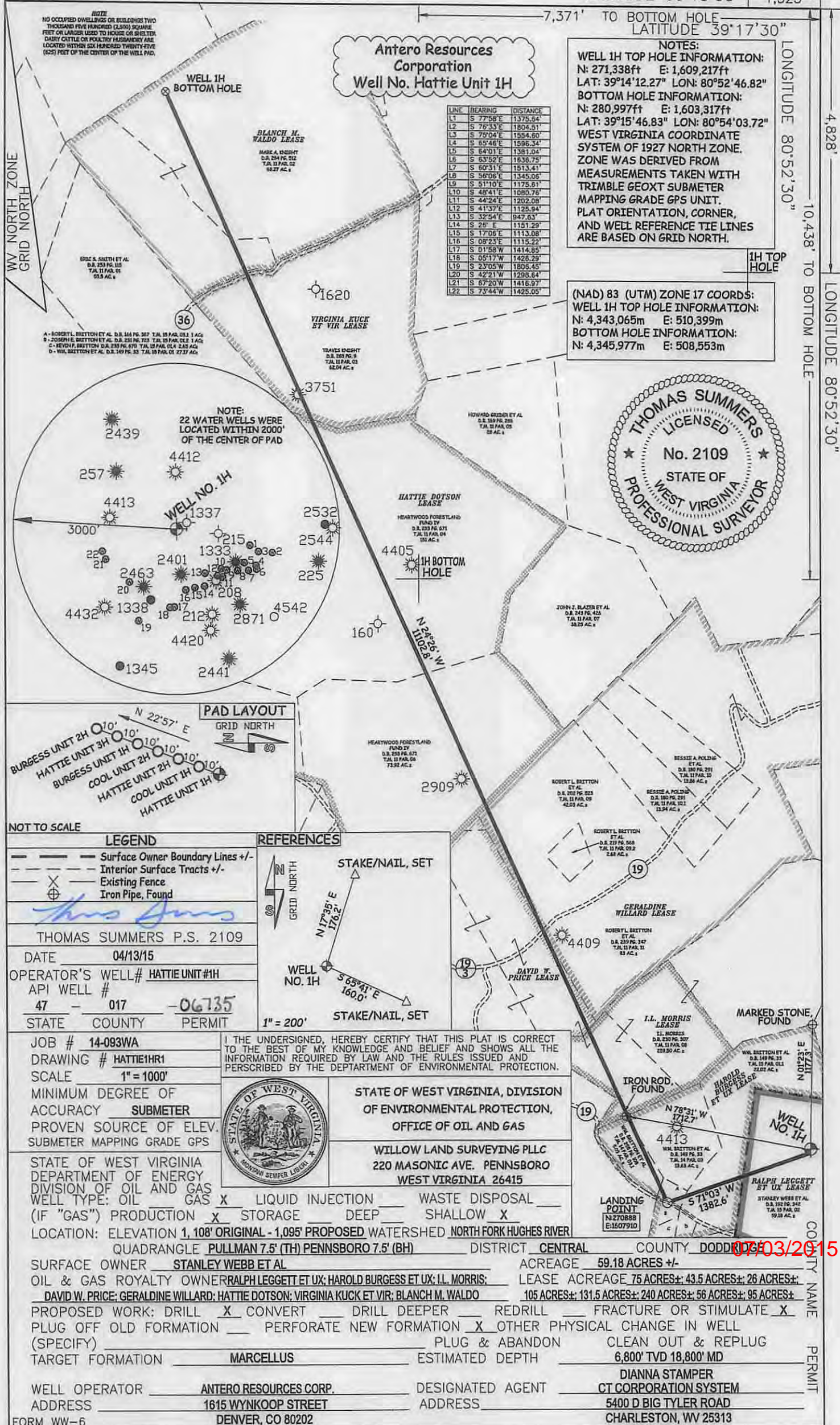
LATITUDE 39°15'00" | -1,323'

TO BOTTOM HOLE  
LATITUDE 39°17'30"

LONGITUDE 80°52'30"

10,438' TO BOTTOM HOLE

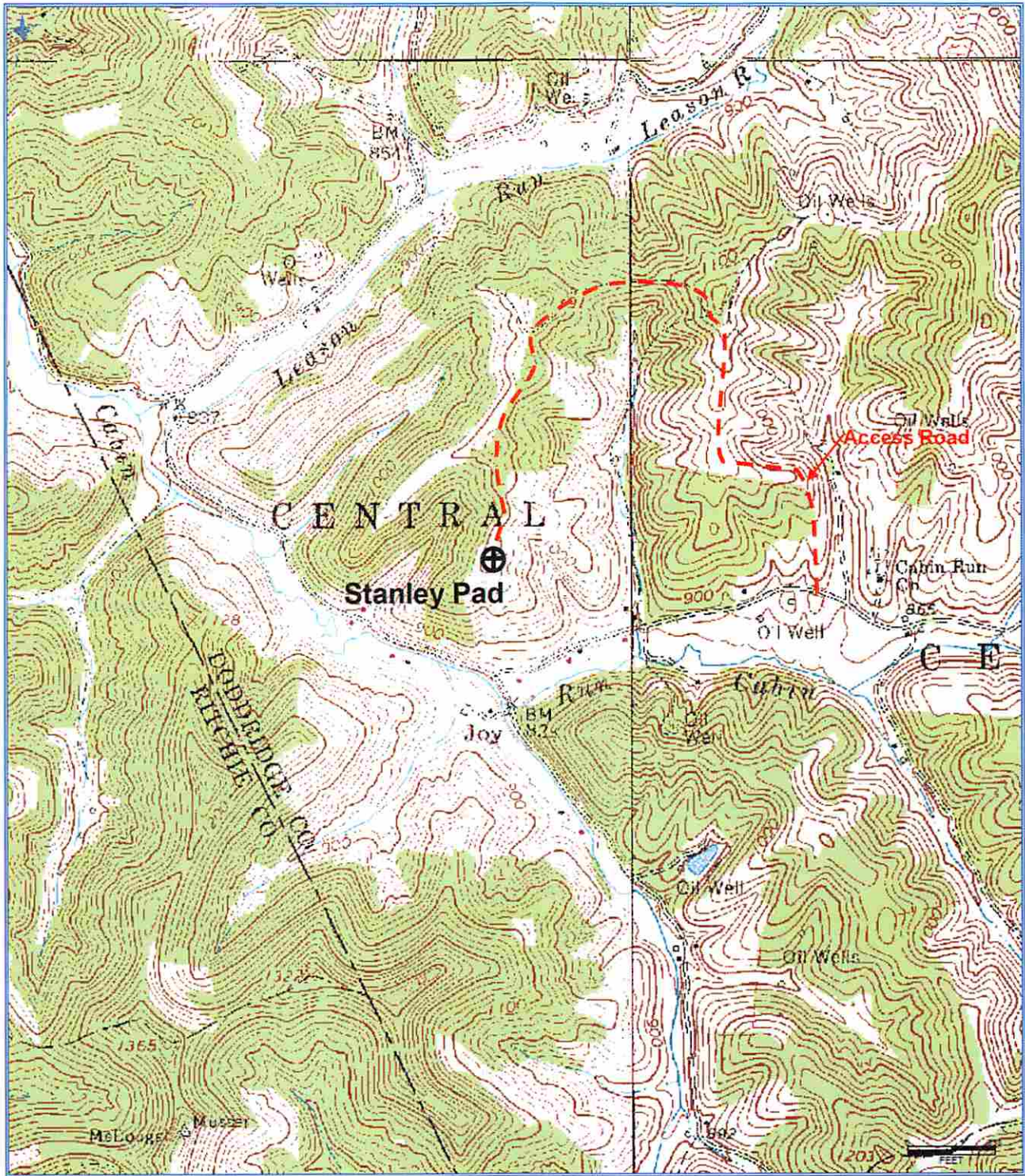
LONGITUDE 80°52'30"



07/03/2015

COUNTY NAME PERMIT





Received  
Office of Oil & Gas  
APR 24 2015

**Antero Resources Corporation**  
Appalachian Basin  
Hattie Unit 1H  
Doddridge County

Quadrangle: Pullman  
Watershed: Cabin Run  
District: West Union  
Date: 3-12-2015