

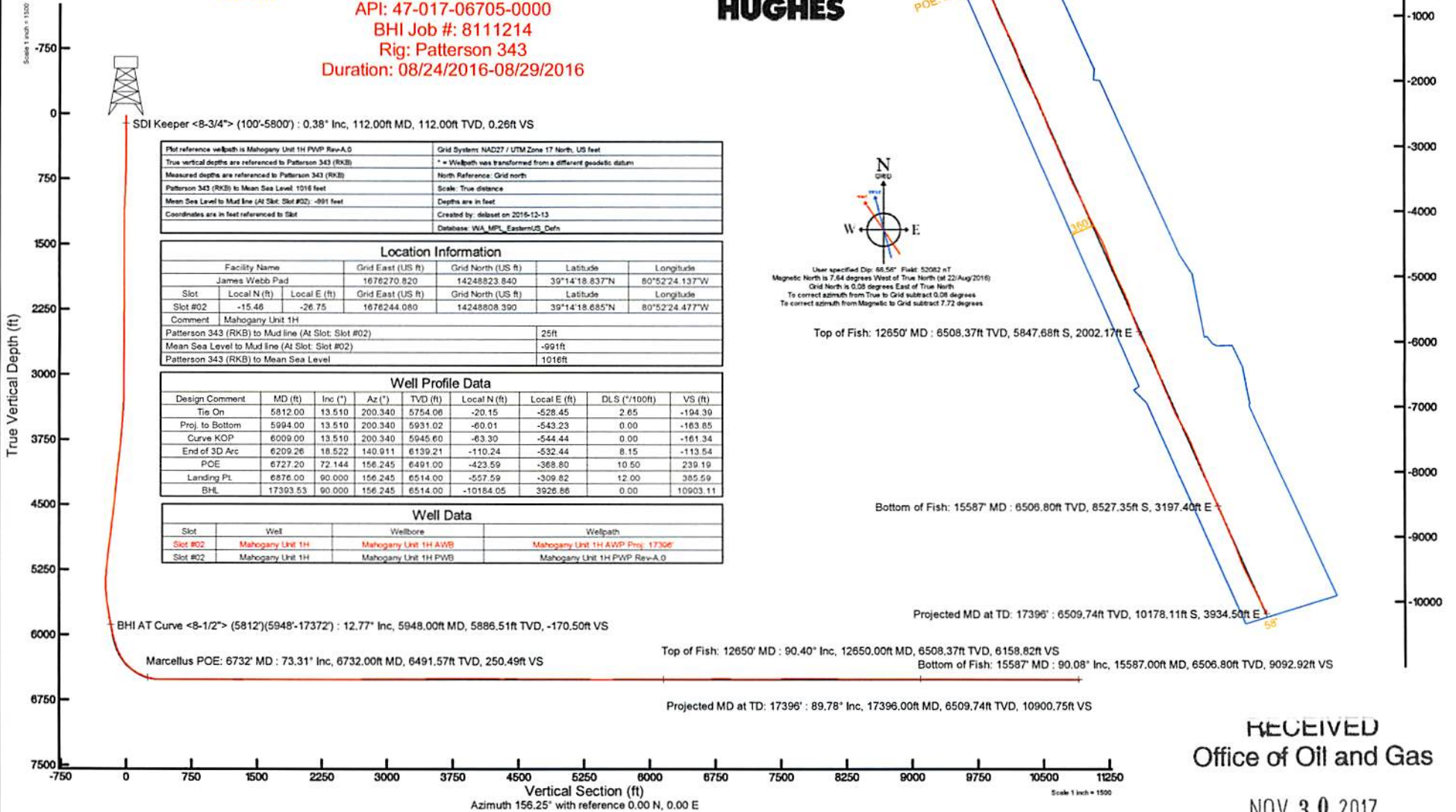
# ANTERO RESOURCES CORPORATION

Location: Doddridge Co., WV  
 Field: Doddridge  
 Facility: James Webb Pad

Slot: Slot #02  
 Well: Mahogany Unit 1H  
 Wellbore: Mahogany Unit 1H PWB



API: 47-017-06705-0000  
 BHI Job #: 8111214  
 Rig: Patterson 343  
 Duration: 08/24/2016-08/29/2016

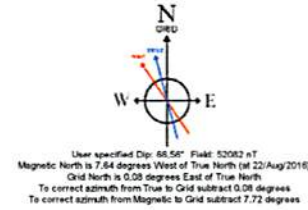


Plat reference wellpath is Mahogany Unit 1H PWP Rev-A.0	Grid System: NAD27 / UTM Zone 17 North, US feet
True vertical depths are referenced to Patterson 343 (RKB)	* = Wellpath was transformed from a different geoidic datum
Measured depths are referenced to Patterson 343 (RKB)	North Reference: Grid north
Patterson 343 (RKB) to Mean Sea Level: 1016 feet	Scale: True distance
Mean Sea Level to Mud line (At Slot: Slot #02): -991 feet	Depths are in feet
Coordinates are in feet referenced to Slot	Created by: delaset on 2016-12-13
	Database: WA_MPL_EasternUS_Defn

Location Information				
Facility Name	Grid East (US ft)	Grid North (US ft)	Latitude	Longitude
James Webb Pad	1676270.820	14248823.840	39°14'18.837"N	80°52'24.137"W
Slot	Local N (ft)	Local E (ft)	Grid East (US ft)	Grid North (US ft)
Slot #02	-15.46	-26.75	1676244.060	14248808.390
			Latitude	Longitude
			39°14'18.685"N	80°52'24.477"W
Comment: Mahogany Unit 1H				
Patterson 343 (RKB) to Mud line (At Slot: Slot #02)				25ft
Mean Sea Level to Mud line (At Slot: Slot #02)				-991ft
Patterson 343 (RKB) to Mean Sea Level				1016ft

Well Profile Data							
Design Comment	MD (ft)	Inc (")	Az (°)	TVD (ft)	Local N (ft)	Local E (ft)	VS (ft)
Tie On	5812.00	13.510	200.340	5754.06	-20.15	-528.45	2.65
Proj. to Bottom	5994.00	13.510	200.340	5931.02	-60.01	-543.23	0.00
Curve KOP	6009.00	13.510	200.340	5945.60	-63.30	-544.44	0.00
End of 3D Arc	6209.26	18.522	140.911	6139.21	-110.24	-532.44	8.15
POE	6727.20	72.144	156.245	6491.00	-423.59	-368.80	10.50
Landing Pt.	6876.00	90.000	156.245	6514.00	-557.59	-309.82	12.00
BHL	17393.53	90.000	156.245	6514.00	-10184.05	3926.86	0.00

Well Data			
Slot	Well	Wellbore	Wellpath
Slot #02	Mahogany Unit 1H	Mahogany Unit 1H AWB	Mahogany Unit 1H AWP Proj: 17396'
Slot #02	Mahogany Unit 1H	Mahogany Unit 1H PWB	Mahogany Unit 1H PWP Rev-A.0



Top of Fish: 12650' MD : 6508.37ft TVD, 5847.68ft S, 2002.17ft E

Bottom of Fish: 15587' MD : 6506.80ft TVD, 8527.35ft S, 3197.40ft E

Projected MD at TD: 17396' : 6509.74ft TVD, 10178.11ft S, 3934.50ft E

Top of Fish: 12650' MD : 90.40° Inc, 12650.00ft MD, 6508.37ft TVD, 6158.82ft VS

Bottom of Fish: 15587' MD : 90.08° Inc, 15587.00ft MD, 6506.80ft TVD, 9092.92ft VS

Projected MD at TD: 17396' : 89.78° Inc, 17396.00ft MD, 6509.74ft TVD, 10900.75ft VS

RECEIVED  
 Office of Oil and Gas

NOV 30 2017

WV Department of  
 Environmental Protection



**Actual Wellpath Report**  
 Mahogany Unit 1H AWP Proj: 17396'  
 Page 1 of 16



REFERENCE WELLPATH IDENTIFICATION			
Operator	ANTERO RESOURCES CORPORATION	Slot	Slot #02
Area	Doddridge Co., WV	Well	Mahogany Unit 1H
Field	Doddridge	Wellbore	Mahogany Unit 1H AWB
Facility	James Webb Pad		

REPORT SETUP INFORMATION			
Projection System	NAD27 / UTM Zone 17 North, US feet	Software System	WellArchitect® 5.0
North Reference	Grid	User	Delaset
Scale	0.999601	Report Generated	13/Dec/2016 at 13:21
Convergence at slot	0.09° East	Database/Source file	WA_MPL_EasternUS_Defn/Mahogany_Unit_1H_AWP_Proj_17396_.xml

WELLPATH LOCATION						
	Local coordinates		Grid coordinates		Geographic coordinates	
	North[ft]	East[ft]	Easting[US ft]	Northing[US ft]	Latitude	Longitude
Slot Location	-15.46	-26.75	1676244.08	14248808.39	39°14'18.685"N	80°52'24.477"W
Facility Reference Pt			1676270.82	14248823.84	39°14'18.837"N	80°52'24.137"W
Field Reference Pt			0.00	0.00	0°00'00.000"	85°29'19.301"W

WELLPATH DATUM			
Calculation method	Minimum curvature	Patterson 343 (RKB) to Facility Vertical Datum	25.00ft
Horizontal Reference Pt	Slot	Patterson 343 (RKB) to Mean Sea Level	1016.00ft
Vertical Reference Pt	Patterson 343 (RKB)	Patterson 343 (RKB) to Mud Line at Slot (Slot #02)	25.00ft
MD Reference Pt	Patterson 343 (RKB)	Section Origin	N 0.00, E 0.00 ft
Field Vertical Reference	Mean Sea Level	Section Azimuth	156.25°

RECEIVED  
 Office of Oil and Gas  
 NOV 30 2017  
 WV Department of  
 Environmental Protection



# Actual Wellpath Report

Mahogany Unit 1H AWP Proj: 17396

Page 2 of 16



## REFERENCE WELLPATH IDENTIFICATION

Operator	ANTERO RESOURCES CORPORATION	Slot	Slot #02
Area	Doddridge Co., WV	Well	Mahogany Unit 1H
Field	Doddridge	Wellbore	Mahogany Unit 1H AWB
Facility	James Webb Pad		

WELLPATH DATA (370 stations) † = Interpolated/extrapolated station												
MD	Inclination	Azimuth	TVD	Vert Sect	North	East	Grid East	Grid North	Latitude	Longitude	Closure Dist	Closure Dir
ft	°	°	ft	ft	ft	ft	ft	ft	°	ft	ft	ft
0.00	0.00	132.910	0.00	0.00	0.00	0.00	1676244.08	14248808.39	39°14'18.685"N	80°52'24.477"W	0.00	0.00
25.00	0.00	132.910	25.00	0.00	0.00	0.00	1676244.08	14248808.39	39°14'18.685"N	80°52'24.477"W	0.00	0.00
112.00	0.380	132.910	112.00	0.26	-0.20	0.21	1676244.29	14248808.19	39°14'18.683"N	80°52'24.474"W	0.29	0.44
137.00	0.400	124.320	137.00	0.42	-0.30	0.34	1676244.42	14248808.09	39°14'18.682"N	80°52'24.473"W	0.25	0.46
162.00	0.370	130.320	162.00	0.56	-0.40	0.48	1676244.56	14248807.99	39°14'18.681"N	80°52'24.471"W	0.63	0.83
187.00	0.360	126.090	187.00	0.70	-0.50	0.60	1676244.68	14248807.89	39°14'18.680"N	80°52'24.468"W	0.78	1.29
212.00	0.360	134.660	212.00	0.84	-0.60	0.72	1676244.80	14248807.79	39°14'18.679"N	80°52'24.468"W	0.94	1.29
212.00	0.360	134.660	212.00	0.84	-0.60	0.72	1676244.80	14248807.79	39°14'18.679"N	80°52'24.468"W	0.94	1.29
237.00	0.340	133.570	237.00	0.98	-0.71	0.83	1676244.91	14248807.68	39°14'18.678"N	80°52'24.466"W	1.09	1.30
262.00	0.350	125.970	262.00	1.12	-0.81	0.95	1676245.03	14248807.58	39°14'18.677"N	80°52'24.465"W	1.24	1.30
287.00	0.330	123.300	287.00	1.25	-0.89	1.07	1676245.15	14248807.50	39°14'18.676"N	80°52'24.463"W	1.39	1.29
312.00	0.360	126.600	312.00	1.37	-0.98	1.19	1676245.27	14248807.41	39°14'18.675"N	80°52'24.462"W	1.54	1.29
337.00	0.360	122.070	336.99	1.51	-1.07	1.32	1676245.40	14248807.33	39°14'18.674"N	80°52'24.460"W	1.70	1.28
362.00	0.340	124.160	361.99	1.64	-1.15	1.45	1676245.53	14248807.24	39°14'18.673"N	80°52'24.459"W	1.85	1.28
387.00	0.360	125.890	386.99	1.77	-1.24	1.57	1676245.65	14248807.15	39°14'18.672"N	80°52'24.457"W	2.00	1.28
412.00	0.290	123.360	411.99	1.89	-1.32	1.69	1676245.77	14248807.07	39°14'18.671"N	80°52'24.455"W	2.14	1.27
437.00	0.140	161.460	436.99	1.97	-1.38	1.75	1676245.83	14248807.01	39°14'18.671"N	80°52'24.455"W	2.23	1.28
462.00	0.310	237.380	461.99	2.01	-1.45	1.71	1676245.79	14248806.94	39°14'18.670"N	80°52'24.455"W	2.24	1.30
487.00	0.430	249.320	486.99	2.02	-1.52	1.56	1676245.64	14248806.87	39°14'18.670"N	80°52'24.457"W	2.18	1.34
512.00	0.870	258.140	511.99	1.97	-1.59	1.29	1676245.37	14248806.80	39°14'18.669"N	80°52'24.461"W	2.04	1.40
537.00	1.190	261.280	536.99	1.87	-1.67	0.85	1676244.93	14248806.72	39°14'18.668"N	80°52'24.466"W	1.87	1.53
562.00	1.500	263.140	561.98	1.70	-1.74	0.26	1676244.34	14248806.65	39°14'18.667"N	80°52'24.474"W	1.76	1.71
587.00	1.740	265.340	586.97	1.48	-1.81	-0.44	1676243.64	14248806.58	39°14'18.667"N	80°52'24.483"W	1.87	1.93
612.00	2.080	267.640	611.96	1.19	-1.86	-1.27	1676242.81	14248806.53	39°14'18.666"N	80°52'24.493"W	2.26	2.14
637.00	2.460	270.500	636.94	0.81	-1.88	-2.26	1676241.82	14248806.51	39°14'18.666"N	80°52'24.506"W	2.94	2.30
662.00	2.740	273.100	661.91	0.32	-1.84	-3.39	1676240.69	14248806.55	39°14'18.666"N	80°52'24.520"W	3.86	2.41
687.00	2.990	275.140	686.88	-0.27	-1.75	-4.64	1676239.44	14248806.64	39°14'18.667"N	80°52'24.536"W	4.96	2.49
712.00	3.490	276.500	711.84	-0.96	-1.61	-6.04	1676238.04	14248806.78	39°14'18.669"N	80°52'24.554"W	6.25	2.55
737.00	3.790	277.700	736.79	-1.78	-1.41	-7.62	1676236.46	14248806.98	39°14'18.671"N	80°52'24.574"W	7.75	2.59
762.00	4.040	278.400	761.73	-2.68	-1.17	-9.31	1676234.77	14248807.22	39°14'18.673"N	80°52'24.595"W	9.38	2.62
787.00	4.420	278.050	786.66	-3.66	-0.91	-11.13	1676232.95	14248807.48	39°14'18.676"N	80°52'24.618"W	11.17	2.65

SDI Keeper <8-3/4"> (100'-5800')

Turn Rate Comments

Build Rate

DLS

Closure Dir

Closure Dist

Latitude

Longitude

Grid North

Grid East

Vert Sect

North

East

Interpolated/extrapolated station

RECEIVED  
Office of Oil and Gas  
NOV 30 2017  
WV Department of  
Environmental Protection



# Actual Wellpath Report

Mahogany Unit 1H AWP Proj: 17396  
Page 3 of 16



## REFERENCE WELLPATH IDENTIFICATION

Operator	ANTERO RESOURCES CORPORATION	Slot	Slot #2
Area	Doddridge Co., WV	Well	Mahogany Unit 1H
Field	Doddridge	Wellbore	Mahogany Unit 1H AWB
Facility	James Webb Pad		

WELLPATH DATA (370 stations)																
MD	Inclination	Azimuth	TVD	Vert Sect	North	East	Grid East	Grid North	Latitude	Longitude	Closure Dist	Closure Dir	DLS	Build Rate	Turn Rate	Comments
(m)	(°)	(°)	(m)	(m)	(m)	(m)	(m)	(m)	(m)	(m)	(m)	(m)	(m)	(m)	(m)	(m)
812.00	4.660	277.450	811.58	-4.69	-0.64	-13.10	1676230.99	14248807.75	39°14'18.678"N	80°52'24.643"W	13.11	267.205	0.98	0.96	-2.40	
837.00	4.780	276.940	836.50	-5.75	-0.38	-15.14	1676228.95	14248808.01	39°14'18.681"N	80°52'24.669"W	15.14	268.555	0.51	0.48	-2.04	
862.00	4.890	276.520	861.41	-6.82	-0.14	-17.23	1676226.66	14248808.26	39°14'18.683"N	80°52'24.696"W	17.23	269.551	0.46	0.44	-1.68	
887.00	4.960	275.970	886.32	-7.89	0.10	-19.36	1676224.73	14248808.49	39°14'18.686"N	80°52'24.723"W	19.36	270.291	0.34	0.28	-2.20	
912.00	4.890	276.630	911.23	-8.96	0.33	-21.50	1676222.59	14248808.72	39°14'18.688"N	80°52'24.750"W	21.50	270.890	0.36	-0.28	2.64	
937.00	5.010	275.350	936.13	-10.03	0.56	-23.64	1676220.45	14248808.95	39°14'18.690"N	80°52'24.777"W	23.65	271.354	0.65	0.48	-5.12	
962.00	5.020	274.800	961.04	-11.09	0.75	-25.82	1676218.27	14248809.14	39°14'18.692"N	80°52'24.805"W	25.83	271.668	0.20	0.04	-2.20	
987.00	4.920	275.070	985.94	-12.13	0.94	-27.98	1676216.12	14248809.33	39°14'18.694"N	80°52'24.832"W	27.99	271.921	0.41	-0.40	1.08	
1012.00	5.110	273.980	1010.85	-13.16	1.11	-30.15	1676213.94	14248809.50	39°14'18.696"N	80°52'24.860"W	30.17	272.109	0.85	0.76	-4.36	
1037.00	5.120	273.180	1035.75	-14.18	1.25	-32.38	1676211.71	14248809.64	39°14'18.697"N	80°52'24.888"W	32.40	272.210	0.29	0.04	-3.20	
1062.00	4.870	271.680	1060.65	-15.14	1.34	-34.55	1676209.54	14248809.73	39°14'18.698"N	80°52'24.916"W	34.58	272.225	1.13	-1.00	-6.00	
1087.00	4.550	268.930	1085.57	-15.98	1.35	-36.61	1676207.49	14248809.74	39°14'18.698"N	80°52'24.942"W	36.63	272.120	1.57	-1.28	-11.00	
1112.00	4.600	267.660	1110.49	-16.73	1.30	-38.60	1676205.50	14248809.68	39°14'18.698"N	80°52'24.967"W	38.62	271.922	0.45	0.20	-5.08	
1137.00	4.440	266.660	1135.41	-17.43	1.20	-40.57	1676203.53	14248809.59	39°14'18.697"N	80°52'24.992"W	40.58	271.692	0.71	-0.64	-4.00	
1162.00	4.160	265.220	1160.34	-18.07	1.07	-42.44	1676201.66	14248809.46	39°14'18.696"N	80°52'25.016"W	42.45	271.439	1.20	-1.12	-5.76	
1187.00	3.630	262.540	1185.28	-18.58	0.89	-44.12	1676199.97	14248809.28	39°14'18.694"N	80°52'25.038"W	44.13	271.153	2.24	-2.12	-10.72	
1212.00	3.010	259.040	1210.24	-18.95	0.66	-45.55	1676198.54	14248809.05	39°14'18.692"N	80°52'25.056"W	45.56	270.831	2.61	-2.48	-14.00	
1237.00	2.610	256.970	1235.21	-19.20	0.41	-46.75	1676197.35	14248808.80	39°14'18.689"N	80°52'25.071"W	46.75	270.499	1.65	-1.60	-8.28	
1262.00	2.240	255.160	1260.19	-19.38	0.15	-47.78	1676196.32	14248808.54	39°14'18.687"N	80°52'25.084"W	47.78	270.184	1.51	-1.48	-7.24	
1287.00	1.750	253.300	1285.17	-19.51	-0.08	-48.62	1676195.48	14248808.31	39°14'18.684"N	80°52'25.095"W	48.62	269.904	1.98	-1.96	-7.44	
1312.00	0.990	253.050	1310.17	-19.58	-0.25	-49.19	1676194.91	14248808.14	39°14'18.683"N	80°52'25.102"W	49.19	269.704	3.04	-3.04	-1.00	
1337.00	0.300	257.260	1335.16	-19.62	-0.33	-49.46	1676194.64	14248808.06	39°14'18.682"N	80°52'25.106"W	49.46	269.616	2.76	-2.76	16.84	
1362.00	0.150	75.480	1360.16	-19.62	-0.34	-49.49	1676194.61	14248808.05	39°14'18.682"N	80°52'25.106"W	49.49	269.609	1.80	-0.60	712.88	
1387.00	0.570	78.860	1385.16	-19.59	-0.31	-49.34	1676194.76	14248808.09	39°14'18.682"N	80°52'25.104"W	49.34	269.646	1.68	1.68	13.52	
1412.00	0.670	80.390	1410.16	-19.53	-0.26	-49.07	1676195.03	14248808.13	39°14'18.683"N	80°52'25.101"W	49.07	269.700	0.41	0.40	6.12	
1437.00	0.980	76.120	1435.16	-19.46	-0.18	-48.72	1676195.38	14248808.21	39°14'18.683"N	80°52'25.096"W	48.72	269.787	1.26	1.24	-17.08	
1462.00	1.140	74.640	1460.15	-19.38	-0.06	-48.27	1676195.83	14248808.33	39°14'18.685"N	80°52'25.090"W	48.27	269.924	0.65	0.64	-5.92	
1487.00	1.240	74.630	1485.15	-19.31	0.07	-47.77	1676196.33	14248808.46	39°14'18.686"N	80°52'25.084"W	47.77	270.088	0.40	0.40	-0.04	
1512.00	1.270	76.380	1510.14	-19.22	0.21	-47.24	1676196.66	14248808.60	39°14'18.687"N	80°52'25.077"W	47.24	270.256	0.19	0.12	7.00	
1537.00	1.360	78.160	1535.14	-19.11	0.34	-46.68	1676197.42	14248808.73	39°14'18.689"N	80°52'25.070"W	46.68	270.413	0.40	0.36	7.12	

RECEIVED  
Office of Oil and Gas  
NOV 30 2017  
WV Department of  
Environmental Protection



# Actual Wellpath Report

Mahogany Unit 1H AWP Proj: 17396'  
Page 4 of 16



REFERENCE WELLPATH IDENTIFICATION			
Operator	ANTERO RESOURCES CORPORATION	Slot	Slot #02
Area	Doddridge Co., WV	Well	Mahogany Unit 1H
Field	Doddridge	Wellbore	Mahogany Unit 1H AWB
Facility	James Webb Pad		

WELLPATH DATA (370 stations)																
MD	Inclination	Azimuth	TVD	Vert Sect	North	East	Grid East	Grid North	Latitude	Longitude	Closure Dist	Closure Dir	DLS	Build Rate	Turn Rate	Comments
[ft]	[°]	[°]	[ft]	[ft]	[ft]	[ft]	[US ft]	[US ft]			[ft]	[°]	["/100ft]	["/100ft]	["/100ft]	
1562.00	1.470	78.180	1560.13	-18.98	0.46	-46.08	1676198.02	14248808.85	39°14'18.690"N	80°52'25.063"W	46.08	270.576	0.44	0.44	0.08	
1587.00	1.470	78.780	1585.12	-18.85	0.59	-45.45	1676198.65	14248808.98	39°14'18.691"N	80°52'25.055"W	45.45	270.746	0.06	0.00	2.40	
1612.00	1.480	78.870	1610.11	-18.71	0.72	-44.82	1676199.28	14248809.11	39°14'18.692"N	80°52'25.047"W	44.82	270.915	0.04	0.04	0.36	
1637.00	1.500	80.580	1635.10	-18.55	0.83	-44.18	1676199.92	14248809.22	39°14'18.693"N	80°52'25.038"W	44.19	271.079	0.20	0.08	6.84	
1662.00	1.190	83.120	1660.10	-18.40	0.92	-43.60	1676200.50	14248809.31	39°14'18.694"N	80°52'25.031"W	43.61	271.204	1.26	-1.24	10.16	
1687.00	0.900	86.080	1685.09	-18.26	0.96	-43.15	1676200.95	14248809.35	39°14'18.695"N	80°52'25.025"W	43.16	271.276	1.18	-1.16	11.84	
1712.00	0.550	91.670	1710.09	-18.14	0.97	-42.83	1676201.27	14248809.36	39°14'18.695"N	80°52'25.021"W	42.84	271.299	1.43	-1.40	22.36	
1737.00	0.210	125.680	1735.09	-18.05	0.94	-42.67	1676201.43	14248809.33	39°14'18.694"N	80°52'25.019"W	42.68	271.263	1.58	-1.36	136.04	
1762.00	0.160	189.830	1760.09	-17.98	0.88	-42.64	1676201.46	14248809.27	39°14'18.694"N	80°52'25.019"W	42.65	271.182	0.80	-0.20	256.60	
1787.00	0.290	234.690	1785.09	-17.94	0.81	-42.70	1676201.40	14248809.20	39°14'18.693"N	80°52'25.020"W	42.71	271.085	0.84	0.52	179.44	
1812.00	0.490	240.800	1810.09	-17.91	0.72	-42.84	1676201.25	14248809.11	39°14'18.692"N	80°52'25.021"W	42.85	270.963	0.82	0.80	24.44	
1837.00	0.710	242.250	1835.09	-17.89	0.60	-43.07	1676201.02	14248808.99	39°14'18.691"N	80°52'25.024"W	43.08	270.792	0.88	0.88	5.80	
1862.00	0.910	244.110	1860.09	-17.87	0.44	-43.39	1676200.71	14248808.83	39°14'18.689"N	80°52'25.028"W	43.39	270.577	0.81	0.80	7.44	
1887.00	0.900	243.450	1885.08	-17.86	0.26	-43.74	1676200.35	14248808.65	39°14'18.688"N	80°52'25.033"W	43.74	270.344	0.06	-0.04	-2.64	
1912.00	0.910	243.700	1910.08	-17.84	0.09	-44.10	1676200.00	14248808.48	39°14'18.686"N	80°52'25.037"W	44.10	270.113	0.04	0.04	1.00	
1937.00	0.950	242.650	1935.08	-17.82	-0.10	-44.46	1676199.64	14248808.29	39°14'18.684"N	80°52'25.042"W	44.46	269.876	0.17	0.16	-4.20	
1962.00	0.840	245.190	1960.07	-17.80	-0.27	-44.81	1676199.29	14248808.12	39°14'18.683"N	80°52'25.046"W	44.81	269.657	0.47	-0.44	10.16	
1987.00	0.670	247.540	1985.07	-17.80	-0.40	-45.11	1676198.99	14248807.99	39°14'18.681"N	80°52'25.050"W	45.11	269.490	0.69	-0.68	9.40	
2012.00	0.670	252.130	2010.07	-17.82	-0.50	-45.39	1676198.71	14248807.89	39°14'18.680"N	80°52'25.054"W	45.39	269.366	0.21	0.00	18.36	
2037.00	0.650	255.940	2035.07	-17.86	-0.58	-45.66	1676198.44	14248807.81	39°14'18.679"N	80°52'25.057"W	45.67	269.271	0.19	-0.08	15.24	
2062.00	0.460	278.960	2060.07	-17.94	-0.60	-45.90	1676198.20	14248807.79	39°14'18.679"N	80°52'25.060"W	45.90	269.251	1.16	-0.76	92.08	
2087.00	0.410	330.640	2085.07	-18.08	-0.51	-46.04	1676198.06	14248807.88	39°14'18.680"N	80°52'25.062"W	46.04	269.370	1.53	-0.20	206.72	
2112.00	0.600	358.780	2110.06	-18.29	-0.30	-46.09	1676198.01	14248808.09	39°14'18.682"N	80°52'25.063"W	46.09	269.630	1.23	0.76	112.56	
2137.00	0.880	17.560	2135.06	-18.55	0.02	-46.03	1676198.07	14248808.41	39°14'18.685"N	80°52'25.062"W	46.03	270.020	1.47	1.12	75.12	
2162.00	1.110	25.550	2160.06	-18.86	0.42	-45.87	1676198.23	14248808.81	39°14'18.689"N	80°52'25.060"W	45.87	270.522	1.07	0.92	31.96	
2187.00	1.200	26.090	2185.05	-19.18	0.87	-45.65	1676198.45	14248809.26	39°14'18.694"N	80°52'25.057"W	45.66	271.094	0.36	0.36	2.16	
2212.00	1.360	30.730	2210.05	-19.52	1.36	-45.38	1676198.71	14248809.75	39°14'18.699"N	80°52'25.054"W	45.40	271.718	0.76	0.64	18.56	
2237.00	1.360	29.680	2235.04	-19.87	1.87	-45.09	1676199.01	14248810.26	39°14'18.704"N	80°52'25.050"W	45.12	272.381	0.10	0.00	-4.20	
2262.00	1.450	33.020	2260.03	-20.22	2.40	-44.77	1676199.33	14248810.79	39°14'18.709"N	80°52'25.046"W	44.83	273.065	0.49	0.36	13.36	
2287.00	1.420	35.910	2285.03	-20.55	-2.91	-44.41	1676199.69	14248811.30	39°14'18.714"N	80°52'25.041"W	44.51	273.753	0.31	-0.12	11.56	

RECEIVED  
Office of Oil and Gas

NOV 30 2017

WV Department of  
Environmental Protection



# Actual Wellpath Report

Mahogany Unit 1H AWP Proj.: 17396

Page 5 of 16



## REFERENCE WELLPATH IDENTIFICATION

Operator	ANTERO RESOURCES CORPORATION	Slot	Slot #02
Area	Doddridge Co., WV	Well	Mahogany Unit 1H AWB
Field	Doddridge	Wellbore	Mahogany Unit 1H AWB
Facility	James Webb Pad		

WELLPATH DATA (370 stations)												
MD	Inclination	Azimuth	TVD	Vert Sect	North	East	East	Grid East	Grid North	Latitude	Longitude	Closure Dist
[m]	[°]	[°]	[m]	[m]	[m]	[m]	[m]	[m]	[m]	[°]	[°]	[m]
2312.00	1.220	2310.02	-20.81	3.95	-44.05	1676200.05	1424881.74	39°14'18.718"N	80°52'25.037"W	44.17	274.356	1.11
2327.00	1.060	2335.01	-20.96	3.68	-43.67	1676200.42	1424881.07	39°14'18.722"N	80°52'25.032"W	43.83	274.820	0.96
2362.00	1.030	2360.01	-21.05	3.95	-43.30	1676200.80	1424882.34	39°14'18.724"N	80°52'25.027"W	43.48	275.208	0.22
2387.00	1.000	2385.01	-21.11	4.18	-42.93	1676201.17	1424881.57	39°14'18.726"N	80°52'25.022"W	43.13	275.562	0.36
2412.00	0.840	2410.00	-21.15	4.37	-42.57	1676201.52	1424881.76	39°14'18.728"N	80°52'25.018"W	42.80	275.866	0.64
2437.00	0.880	2435.00	-21.18	4.55	-42.24	1676201.85	1424881.94	39°14'18.730"N	80°52'25.014"W	42.49	276.146	0.17
2462.00	0.830	2460.00	-21.20	4.72	-41.91	1676202.18	1424881.11	39°14'18.732"N	80°52'25.010"W	42.18	276.429	0.21
2487.00	0.820	2484.99	-21.24	4.90	-41.60	1676202.50	1424881.28	39°14'18.734"N	80°52'25.006"W	41.88	276.714	0.07
2512.00	0.850	2509.99	-21.28	5.08	-41.28	1676202.81	1424881.47	39°14'18.735"N	80°52'25.002"W	41.59	277.015	0.15
2537.00	0.850	2534.99	-21.33	5.27	-40.97	1676203.13	1424881.66	39°14'18.737"N	80°52'24.998"W	41.30	277.336	0.08
2562.00	0.930	2559.99	-21.39	5.49	-40.64	1676203.45	1424881.88	39°14'18.739"N	80°52'24.993"W	41.01	277.690	0.35
2587.00	0.970	2584.98	-21.47	5.72	-40.30	1676203.80	1424881.11	39°14'18.742"N	80°52'24.989"W	40.70	278.079	0.17
2612.00	0.940	2609.98	-21.55	5.96	-39.96	1676204.14	1424881.35	39°14'18.744"N	80°52'24.985"W	40.40	278.482	0.20
2637.00	0.940	2634.98	-21.66	6.22	-39.64	1676204.45	1424881.61	39°14'18.747"N	80°52'24.981"W	40.13	278.920	0.54
2662.00	0.840	2659.97	-21.81	6.50	-39.38	1676204.72	1424881.89	39°14'18.749"N	80°52'24.977"W	39.81	279.379	0.49
2687.00	0.850	2684.97	-21.97	6.78	-39.13	1676204.96	1424881.17	39°14'18.752"N	80°52'24.974"W	39.72	279.829	0.05
2712.00	0.880	2709.97	-22.12	7.06	-38.88	1676205.22	1424881.45	39°14'18.755"N	80°52'24.971"W	39.52	280.291	0.14
2737.00	0.890	2734.96	-22.27	7.34	-38.61	1676205.48	1424881.72	39°14'18.758"N	80°52'24.968"W	39.30	280.760	0.12
2762.00	0.800	2759.96	-22.39	7.59	-38.34	1676205.75	1424881.97	39°14'18.760"N	80°52'24.964"W	39.08	281.193	0.49
2787.00	0.510	2784.96	-22.44	7.75	-38.11	1676205.99	1424881.14	39°14'18.762"N	80°52'24.961"W	38.89	281.495	1.28
2812.00	0.340	2809.96	-22.43	7.82	-37.94	1676206.16	1424881.20	39°14'18.762"N	80°52'24.959"W	38.73	281.644	0.79
2837.00	0.420	2834.96	-22.41	7.88	-37.78	1676206.32	1424881.25	39°14'18.763"N	80°52'24.957"W	38.58	281.751	0.32
2862.00	0.470	2859.96	-22.38	7.91	-37.59	1676206.51	1424881.30	39°14'18.763"N	80°52'24.955"W	38.41	281.885	0.21
2887.00	0.390	2884.96	-22.36	7.97	-37.41	1676206.68	1424881.36	39°14'18.764"N	80°52'24.952"W	38.25	282.029	0.35
2912.00	0.400	2909.96	-22.37	8.04	-37.25	1676206.84	1424881.43	39°14'18.765"N	80°52'24.950"W	38.11	282.181	0.13
2937.00	0.260	2934.96	-22.37	8.11	-37.13	1676206.97	1424881.50	39°14'18.765"N	80°52'24.949"W	38.00	282.320	0.57
2962.00	0.420	2959.96	-22.40	8.19	-37.00	1676207.09	1424881.58	39°14'18.766"N	80°52'24.947"W	37.90	282.479	0.65
2987.00	0.230	2984.95	-22.45	8.29	-36.90	1676207.19	1424881.67	39°14'18.767"N	80°52'24.946"W	37.82	282.654	0.92
3012.00	0.210	3009.95	-22.50	8.36	-36.85	1676207.25	1424881.75	39°14'18.768"N	80°52'24.945"W	37.79	282.790	0.12
3037.00	0.280	3034.95	-22.54	8.44	-36.78	1676207.32	1424881.83	39°14'18.769"N	80°52'24.944"W	37.73	282.931	0.32

RECEIVED  
Office of Oil and Gas  
NOV 30 2017  
WV Department of  
Environmental Protection



# Actual Wellpath Report

Mahogany Unit 1H AWP Proj.: 17396  
Page 6 of 16



## REFERENCE WELLPATH IDENTIFICATION

Operator	ANTERO RESOURCES CORPORATION	Slot	Slot #02
Area	Doddridge Co., WV	Well	Mahogany Unit 1H
Field	Doddridge	Wellbore	Mahogany Unit 1H AWB
Facility	James Webb Pad		

WELLPATH DATA (370 stations)												
MD	Inclination	Azimuth	TVD	Vert Sect	North	East	Grid East	Grid North	Latitude	Longitude	Closure Dist	Closure Dir
(m)	(°)	(°)	(m)	(m)	(m)	(m)	(m)	(m)	(°)	(°)	(m)	(°)
3062.00	0.210	37.660	3059.95	-22.58	8.52	-36.71	1676207.39	14248816.91	39°14'18.769"N	80°52'24.943"W	37.68	283.072
3087.00	0.170	18.930	3084.95	-22.63	8.59	-36.67	1676207.43	14248816.98	39°14'18.770"N	80°52'24.943"W	37.66	283.191
3112.00	0.150	30.500	3109.95	-22.68	8.66	-36.64	1676207.46	14248817.04	39°14'18.771"N	80°52'24.942"W	37.65	283.295
3137.00	0.240	20.710	3134.95	-22.74	8.73	-36.60	1676207.49	14248817.12	39°14'18.771"N	80°52'24.942"W	37.63	283.421
3162.00	0.490	273.450	3159.95	-22.82	8.79	-36.69	1676207.40	14248817.18	39°14'18.772"N	80°52'24.943"W	37.73	283.472
3187.00	0.930	266.000	3184.95	-22.94	8.78	-37.00	1676207.10	14248817.17	39°14'18.772"N	80°52'24.947"W	38.03	283.352
3212.00	1.320	267.960	3209.95	-23.11	8.76	-37.49	1676206.61	14248817.14	39°14'18.772"N	80°52'24.953"W	38.50	283.149
3237.00	2.510	263.930	3234.93	-23.39	8.69	-38.32	1676205.77	14248817.08	39°14'18.771"N	80°52'24.964"W	39.29	282.776
3262.00	2.930	265.570	3259.90	-23.76	8.58	-39.50	1676204.59	14248816.97	39°14'18.770"N	80°52'24.979"W	40.42	282.257
3287.00	3.800	266.540	3284.86	-24.26	8.48	-40.97	1676203.13	14248816.87	39°14'18.769"N	80°52'24.997"W	41.84	281.699
3312.00	4.640	268.070	3309.79	-24.93	8.40	-42.80	1676201.29	14248816.79	39°14'18.768"N	80°52'25.021"W	43.62	281.101
3337.00	5.120	270.490	3334.70	-25.76	8.37	-44.93	1676199.17	14248816.76	39°14'18.768"N	80°52'25.048"W	45.70	280.558
3362.00	6.110	276.030	3359.58	-26.88	8.52	-47.37	1676196.73	14248816.91	39°14'18.769"N	80°52'25.079"W	48.13	280.201
3387.00	6.500	277.780	3384.43	-28.28	8.85	-50.09	1676194.01	14248817.24	39°14'18.773"N	80°52'25.113"W	50.87	280.024
3412.00	6.890	277.690	3409.26	-29.80	9.25	-52.98	1676191.12	14248817.63	39°14'18.777"N	80°52'25.150"W	53.78	279.900
3437.00	7.210	277.220	3434.07	-31.39	9.64	-56.02	1676188.08	14248818.03	39°14'18.781"N	80°52'25.189"W	56.85	279.688
3462.00	7.500	276.680	3458.87	-33.01	10.03	-59.17	1676184.93	14248818.41	39°14'18.784"N	80°52'25.229"W	60.01	279.619
3487.00	8.040	276.170	3453.64	-34.69	10.40	-62.50	1676181.61	14248818.79	39°14'18.788"N	80°52'25.271"W	63.36	279.450
3512.00	8.250	276.180	3450.89	-36.46	10.78	-66.02	1676178.09	14248819.17	39°14'18.792"N	80°52'25.316"W	66.89	279.277
3537.00	8.550	276.250	3533.12	-38.28	11.18	-69.65	1676174.46	14248819.56	39°14'18.796"N	80°52'25.362"W	70.54	279.118
3562.00	9.070	275.320	3557.83	-40.17	11.56	-73.46	1676170.65	14248819.95	39°14'18.800"N	80°52'25.410"W	74.36	278.946
3587.00	9.190	275.210	3582.51	-42.09	11.93	-77.41	1676166.70	14248820.31	39°14'18.803"N	80°52'25.461"W	78.32	278.760
3612.00	9.840	274.670	3607.17	-44.08	12.28	-81.52	1676162.59	14248820.67	39°14'18.807"N	80°52'25.513"W	82.44	278.568
3637.00	10.100	274.920	3631.79	-46.14	12.64	-85.84	1676158.28	14248821.03	39°14'18.811"N	80°52'25.568"W	86.76	278.380
3662.00	10.380	274.900	3656.39	-48.28	13.02	-90.27	1676153.85	14248821.41	39°14'18.815"N	80°52'25.624"W	91.20	278.211
3687.00	10.840	275.630	3680.96	-50.51	13.45	-94.85	1676149.27	14248821.83	39°14'18.819"N	80°52'25.682"W	95.80	278.070
3712.00	11.180	275.860	3705.50	-52.86	13.93	-99.60	1676144.52	14248822.31	39°14'18.824"N	80°52'25.743"W	100.57	277.959
3737.00	11.520	275.450	3730.02	-55.28	14.41	-104.50	1676139.63	14248822.79	39°14'18.828"N	80°52'25.805"W	105.48	277.852
3762.00	11.600	274.650	3754.51	-57.69	14.85	-109.49	1676134.64	14248823.24	39°14'18.833"N	80°52'25.868"W	110.49	277.725
3787.00	11.910	273.450	3778.98	-60.06	15.21	-114.57	1676129.56	14248823.59	39°14'18.836"N	80°52'25.933"W	115.57	277.563

Build Rate	DLS	Closure Dir	Closure Dist	Longitude	Latitude	Grid North	Grid East	East	North	Vert Sect	TVD	Azimuth	Inclination	MD
(°/100ft)	(°)	(°)	(m)	(°)	(°)	(m)	(m)	(m)	(m)	(m)	(m)	(°)	(°)	(m)
1.24	1.58	277.563	115.57	80°52'25.933"W	39°14'18.836"N	14248823.59	1676129.56	-114.57	15.21	-60.06	3778.98	273.450	11.910	3787.00
0.32	0.72	277.725	110.49	80°52'25.868"W	39°14'18.833"N	14248823.24	1676134.64	-109.49	14.85	-57.69	3754.51	274.650	11.600	3762.00
1.36	1.40	277.852	105.48	80°52'25.805"W	39°14'18.828"N	14248822.79	1676139.63	-104.50	14.41	-55.28	3730.02	275.450	11.520	3737.00
0.92	1.37	277.959	100.57	80°52'25.743"W	39°14'18.824"N	14248822.31	1676144.52	-99.60	13.93	-52.86	3705.50	275.860	11.180	3712.00
2.92	1.84	278.070	95.80	80°52'25.682"W	39°14'18.819"N	14248821.83	1676149.27	-94.85	13.45	-50.51	3680.96	275.630	10.840	3687.00
-0.08	1.12	278.211	91.20	80°52'25.624"W	39°14'18.815"N	14248821.41	1676153.85	-90.27	13.02	-48.28	3656.39	274.900	10.380	3662.00
1.04	1.05	278.380	86.76	80°52'25.568"W	39°14'18.811"N	14248821.03	1676158.28	-85.84	12.64	-46.14	3631.79	274.920	10.100	3637.00
-2.16	2.60	278.568	82.44	80°52'25.513"W	39°14'18.807"N	14248820.67	1676162.59	-81.52	12.28	-44.08	3607.17	274.670	9.840	3612.00
0.48	0.49	278.760	78.32	80°52'25.461"W	39°14'18.803"N	14248820.31	1676166.70	-77.41	11.93	-42.09	3582.51	275.210	9.190	3587.00
-3.72	2.08	278.946	74.36	80°52'25.410"W	39°14'18.800"N	14248819.95	1676170.65	-73.46	11.56	-40.17	3557.83	275.320	9.070	3562.00
0.28	1.20	279.118	70.54	80°52'25.362"W	39°14'18.796"N	14248819.56	1676174.46	-69.65	11.18	-38.28	3533.12	276.250	8.550	3537.00
0.04	0.84	279.277	66.89	80°52'25.316"W	39°14'18.792"N	14248819.17	1676178.09	-66.02	10.78	-36.46	3508.99	276.180	8.250	3512.00
-2.04	2.76	279.450	63.36	80°52'25.271"W	39°14'18.788"N	14248818.79	1676181.61	-62.50	10.40	-34.69	3453.64	276.170	8.040	3487.00
-2.16	0.56	279.619	60.01	80°52'25.229"W	39°14'18.784"N	14248818.41	1676184.93	-59.17	10.03	-33.01	3458.87	276.680	7.500	3462.00
-1.88	1.28	279.688	56.85	80°52'25.189"W	39°14'18.781"N	14248818.03	1676188.08	-56.02	9.64	-31.39	3434.07	277.220	7.210	3437.00
-0.36	1.56	279.900	53.78	80°52'25.150"W	39°14'18.777"N	14248817.63	1676191.12	-52.98	9.25	-29.80	3409.26	277.690	6.890	3412.00
7.00	1.56	280.024	50.87	80°52'25.113"W	39°14'18.773"N	14248817.24	1676194.01	-50.09	8.85	-28.28	3384.43	277.780	6.500	3387.00
22.16	3.96	280.201	48.13	80°52'25.079"W	39°14'18.769"N	14248816.91	1676196.73	-47.37	8.52	-26.88	3359.58	276.030	6.110	3362.00
9.68	1.92	280.558	45.70	80°52'25.048"W	39°14'18.768"N	14248816.76	1676199.17	-44.93	8.37	-25.76	3334.70	270.490	5.120	3337.00
6.12	3.36	281.101	43.62	80°52'25.021"W	39°14'18.768"N	14248816.79	1676201.29	-42.80	8.40	-24.93	3309.79	268.070	4.640	3312.00
3.88	3.48	281.699	41.84	80°52'24.997"W	39°14'18.769"N	14248816.87	1676203.13	-40.97	8.48	-24.26	3284.86	266.540	3.800	3287.00
6.56	1.68	282.257	40.42	80°52'24.979"W	39°14'18.770"N	14248816.97	1676204.59	-39.50	8.58	-23.76	3259.90	265.570	2.930	3262.00
-16.12	4.76	282.776	39.29	80°52'24.964"W	39°14'18.771"N	14248817.08	1676205.77	-38.32	8.69	-23.39	3234.93	263.930	2.510	3237.00
7.84	1.56	283.149	38.50	80°52'24.953"W	39°14'18.772"N	14248817.14	1676206.61	-37.49	8.76	-23.11	3209.95	267.960	1.320	3212.00
-29.80	1.76	283.352	38.03	80°52'24.947"W	39°14'18.772"N	14248817.17	1676207.10	-37.00	8.78	-22.94	3184.95	266.000	0.930	3187.00
-429.04	1.00	283.472	37.73	80°52'24.943"W	39°14'18.772"N	14248817.18	1676207.40	-36.69	8.79	-22.82	3159.95	273.450	0.490	3162.00
-39.16	0.36	283.421	37.63	80°52'24.942"W	39°14'18.771"N	14248817.12	1676207.49	-36.60	8.73	-22.74	3134.95	270.710	0.240	3137.00
46.28	-0.08	283.295	37.65	80°52'24.942"W	39°14'18.771"N	14248817.04	1676207.46	-36.64	8.66	-22.68	3109.95	30.500	0.150	3112.00
-75.00	-0.16	283.191	37.66	80°52'24.943"W	39°14'18.770"N	14248816.98	1676207.43	-36.67	8.59	-22.63	3084.95	18.930	0.170	3087.00
-34.00	-0.28	283.072	37.68	80°52'24.943"W	39°14'18.769"N	14248816.91	1676207.39	-36.71	8.52	-22.58	3059.95	37.660	0.210	3062.00

RECEIVED  
Office of Oil and Gas  
NOV 30 2017  
WV Department of  
Environmental Protection



# Actual Wellpath Report

Mahogany Unit 1H AWP Proj: 17396'  
Page 7 of 16



REFERENCE WELLPATH IDENTIFICATION			
Operator	ANTERO RESOURCES CORPORATION	Slot	Slot #02
Area	Doddridge Co., WV	Well	Mahogany Unit 1H
Field	Doddridge	Wellbore	Mahogany Unit 1H AWB
Facility	James Webb Pad		

WELLPATH DATA (370 stations)																
MD [ft]	Inclination [°]	Azimuth [°]	TVD [ft]	Vert Sect [ft]	North [ft]	East [ft]	Grid East [US ft]	Grid North [US ft]	Latitude	Longitude	Closure Dist [ft]	Closure Dir [°]	DLS [ft/100ft]	Build Rate [ft/100ft]	Turn Rate [ft/100ft]	Comments
3812.00	12.370	272.330	3803.43	-62.42	15.47	-119.82	1676124.31	14248823.86	39°14'18.839"N	80°52'25.999"W	120.81	277.359	2.07	1.84	-4.48	
3837.00	12.610	271.780	3827.83	-64.77	15.67	-125.22	1676118.91	14248824.05	39°14'18.841"N	80°52'26.068"W	126.20	277.132	1.07	0.96	-2.20	
3862.00	13.170	272.010	3852.20	-67.19	15.85	-130.79	1676113.34	14248824.24	39°14'18.843"N	80°52'26.139"W	131.75	276.911	2.25	2.24	0.92	
3887.00	13.540	271.760	3876.53	-69.69	16.04	-136.57	1676107.57	14248824.43	39°14'18.845"N	80°52'26.212"W	137.50	276.700	1.50	1.48	-1.00	
3912.00	13.610	271.990	3900.83	-72.22	16.23	-142.43	1676101.71	14248824.62	39°14'18.847"N	80°52'26.287"W	143.35	276.503	0.35	0.28	0.92	
3937.00	13.590	272.560	3925.13	-74.80	16.47	-148.30	1676095.84	14248824.85	39°14'18.849"N	80°52'26.361"W	149.22	276.336	0.54	-0.08	2.28	
3962.00	13.520	273.150	3949.43	-77.43	16.76	-154.16	1676089.99	14248825.14	39°14'18.852"N	80°52'26.436"W	155.06	276.205	0.62	-0.28	2.36	
3987.00	13.330	275.530	3973.75	-80.16	17.20	-159.94	1676084.20	14248825.58	39°14'18.857"N	80°52'26.509"W	160.86	276.137	2.34	-0.76	9.52	
4012.00	13.260	276.750	3998.08	-83.02	17.81	-165.66	1676078.49	14248826.20	39°14'18.863"N	80°52'26.582"W	166.61	276.137	1.16	-0.28	4.88	
4037.00	13.110	277.060	4022.42	-85.93	18.50	-171.32	1676072.83	14248826.88	39°14'18.870"N	80°52'26.654"W	172.32	276.163	0.66	-0.60	1.24	
4062.00	12.900	276.240	4046.78	-88.78	19.15	-176.91	1676067.24	14248827.53	39°14'18.876"N	80°52'26.725"W	177.94	276.178	1.12	-0.84	-3.28	
4087.00	12.560	274.030	4071.16	-91.44	19.64	-182.39	1676061.76	14248828.03	39°14'18.881"N	80°52'26.795"W	183.45	276.147	2.38	-1.36	-8.84	
4112.00	12.500	272.640	4095.57	-93.91	19.96	-187.81	1676056.35	14248828.34	39°14'18.884"N	80°52'26.863"W	188.87	276.067	1.23	-0.24	-5.56	
4137.00	12.540	272.010	4119.97	-96.29	20.18	-193.22	1676050.93	14248828.56	39°14'18.887"N	80°52'26.932"W	194.27	275.962	0.57	0.16	-2.52	
4162.00	12.680	271.370	4144.37	-98.63	20.34	-198.68	1676045.48	14248828.72	39°14'18.888"N	80°52'27.002"W	199.72	275.846	0.79	0.56	-2.56	
4187.00	12.970	270.520	4168.75	-100.95	20.43	-204.23	1676039.94	14248828.81	39°14'18.889"N	80°52'27.072"W	205.25	275.713	1.38	1.16	-3.40	
4212.00	13.100	270.030	4193.10	-103.25	20.46	-209.86	1676034.30	14248828.84	39°14'18.890"N	80°52'27.144"W	210.86	275.568	0.68	0.52	-1.96	
4237.00	13.140	269.700	4217.45	-105.52	20.45	-215.54	1676028.63	14248828.83	39°14'18.890"N	80°52'27.216"W	216.51	275.419	0.34	0.16	-1.32	
4262.00	13.300	269.560	4241.79	-107.79	20.41	-221.26	1676022.91	14248828.79	39°14'18.889"N	80°52'27.289"W	222.20	275.270	0.65	0.64	-0.56	
4287.00	13.420	269.420	4266.11	-110.07	20.36	-227.03	1676017.14	14248828.74	39°14'18.889"N	80°52'27.362"W	227.94	275.124	0.50	0.48	-0.56	
4312.00	12.830	271.110	4290.46	-112.38	20.38	-232.71	1676011.46	14248828.76	39°14'18.889"N	80°52'27.434"W	233.60	275.005	2.82	-2.36	6.76	
4337.00	12.250	272.370	4314.86	-114.71	20.54	-238.13	1676006.04	14248828.93	39°14'18.891"N	80°52'27.503"W	239.02	274.931	2.56	-2.32	5.04	
4362.00	11.990	272.310	4339.30	-117.02	20.76	-243.38	1676000.80	14248829.14	39°14'18.893"N	80°52'27.570"W	244.26	274.875	1.04	-1.04	-0.24	
4387.00	11.670	273.310	4363.77	-119.31	21.01	-248.50	1675995.68	14248829.39	39°14'18.896"N	80°52'27.635"W	249.38	274.833	1.52	-1.28	4.00	
4412.00	11.640	273.280	4388.26	-121.61	21.30	-253.54	1675990.64	14248829.68	39°14'18.899"N	80°52'27.699"W	254.43	274.802	0.12	-0.12	-0.12	
4437.00	11.700	273.390	4412.74	-123.91	21.59	-258.59	1675985.60	14248829.98	39°14'18.902"N	80°52'27.763"W	259.49	274.774	0.26	0.24	0.44	
4462.00	11.910	272.980	4437.21	-126.23	21.88	-263.70	1675980.49	14248830.26	39°14'18.904"N	80°52'27.828"W	264.60	274.743	0.90	0.84	-1.64	
4487.00	11.730	274.410	4461.68	-128.59	22.21	-268.81	1675975.38	14248830.59	39°14'18.908"N	80°52'27.893"W	269.72	274.723	1.38	-0.72	5.72	
4512.00	11.330	276.620	4486.18	-131.03	22.69	-273.78	1675970.41	14248831.07	39°14'18.913"N	80°52'27.956"W	274.72	274.737	2.38	-1.60	8.84	
4537.00	11.170	278.710	4510.70	-133.57	23.34	-278.61	1675965.58	14248831.72	39°14'18.919"N	80°52'28.017"W	279.59	274.788	1.75	-0.64	8.36	

RECEIVED  
Office of Oil and Gas  
NOV 30 2017  
WV Department of  
Environmental Protection





# Actual Wellpath Report

Mahogany Unit 1H AWP Proj: 17396

Page 8 of 16



## REFERENCE WELLPATH IDENTIFICATION

Operator	ANTERO RESOURCES CORPORATION
Area	Doddridge Co., WV
Field	Doddridge
Facility	James Webb Pad
Slot	Mahogany Unit 1H AWB
Slot #02	Mahogany Unit 1H AWB

## WELLPATH DATA (370 stations)

MD	Inclination	Azimuth	TVD	Vert Sect	North	East	Grid East	Grid North	Latitude	Longitude	Closure Dist	Closure Dir	DLS	Build Rate	Turn Rate	Comments
4562.00	11.330	281.880	4535.22	-136.30	24.21	-283.41	1675960.79	14248832.59	39°14'18.928"N	80°52'28.078"W	284.44	274.882	2.55	0.64	12.68	
4587.00	11.540	282.760	4559.72	-139.22	25.27	-288.25	1675955.95	14248833.65	39°14'18.938"N	80°52'28.140"W	289.36	275.009	1.09	0.84	3.52	
4612.00	12.030	282.840	4584.19	-142.26	26.40	-293.23	1675950.97	14248834.78	39°14'18.949"N	80°52'28.203"W	294.41	275.144	1.96	1.96	0.32	
4637.00	12.360	282.470	4608.63	-145.39	27.55	-298.38	1675945.82	14248835.93	39°14'18.961"N	80°52'28.269"W	299.65	275.276	1.36	1.32	-1.48	
4662.00	12.410	282.650	4633.05	-148.57	28.72	-303.62	1675940.59	14248837.10	39°14'18.973"N	80°52'28.335"W	304.97	275.404	0.25	0.20	0.72	
4687.00	12.280	281.870	4657.47	-151.71	29.86	-308.84	1675935.37	14248838.23	39°14'18.984"N	80°52'28.402"W	310.28	275.522	0.85	-0.52	-3.12	
4712.00	12.190	280.760	4681.90	-154.75	30.89	-314.03	1675930.17	14248839.27	39°14'18.994"N	80°52'28.468"W	315.55	275.619	1.01	-0.36	-4.44	
4737.00	12.040	279.330	4706.35	-157.67	31.81	-319.20	1675925.01	14248840.19	39°14'19.003"N	80°52'28.533"W	320.78	275.691	1.34	-0.60	-5.72	
4762.00	11.890	278.130	4730.80	-160.46	32.60	-324.32	1675919.89	14248840.97	39°14'19.011"N	80°52'28.598"W	325.96	275.739	1.16	-0.60	-4.80	
4787.00	11.960	277.030	4755.26	-163.14	33.28	-329.44	1675914.77	14248841.66	39°14'19.018"N	80°52'28.663"W	331.12	275.768	0.95	0.28	-4.40	
4812.00	12.230	276.580	4779.71	-165.80	33.90	-334.64	1675909.57	14248842.28	39°14'19.024"N	80°52'28.729"W	336.36	275.784	1.14	1.08	-1.80	
4837.00	12.430	276.320	4804.13	-168.49	34.50	-339.95	1675904.27	14248842.87	39°14'19.030"N	80°52'28.797"W	341.69	275.795	0.83	0.80	-1.04	
4862.00	12.770	277.520	4828.53	-171.27	35.16	-345.36	1675898.86	14248843.53	39°14'19.037"N	80°52'28.866"W	347.15	275.812	1.72	1.36	4.80	
4887.00	13.260	278.870	4852.89	-174.25	35.96	-350.93	1675893.29	14248844.34	39°14'19.045"N	80°52'28.936"W	352.77	275.851	2.31	1.96	5.40	
4912.00	13.470	279.310	4877.21	-177.38	36.87	-356.63	1675887.59	14248845.25	39°14'19.054"N	80°52'29.009"W	358.53	275.903	0.76	0.64	1.76	
4937.00	13.530	279.090	4901.52	-180.55	37.80	-362.38	1675881.85	14248846.18	39°14'19.063"N	80°52'29.082"W	364.35	275.955	0.49	0.44	-0.88	
4962.00	13.500	278.270	4925.83	-183.68	38.68	-368.16	1675876.07	14248847.06	39°14'19.072"N	80°52'29.155"W	370.18	275.998	0.78	-0.12	-3.28	
4987.00	13.470	277.810	4950.14	-186.75	39.50	-373.93	1675870.30	14248847.87	39°14'19.080"N	80°52'29.229"W	376.01	276.030	0.45	-0.12	-1.84	
5012.00	13.500	277.080	4974.45	-189.77	40.26	-379.71	1675864.52	14248848.63	39°14'19.088"N	80°52'29.302"W	381.84	276.052	0.69	0.12	-2.92	
5037.00	13.480	276.850	4998.76	-192.75	40.96	-385.50	1675858.74	14248849.34	39°14'19.095"N	80°52'29.376"W	387.67	276.065	0.23	-0.08	-0.92	
5062.00	13.000	278.150	5023.10	-195.72	41.71	-391.17	1675853.06	14248850.08	39°14'19.102"N	80°52'29.448"W	393.39	276.086	2.26	-1.92	5.20	
5087.00	12.800	278.430	5047.47	-198.68	42.51	-396.70	1675847.54	14248850.89	39°14'19.110"N	80°52'29.518"W	398.97	276.117	0.84	-0.80	1.12	
5112.00	12.620	278.070	5071.86	-201.60	43.30	-402.14	1675842.10	14248851.68	39°14'19.118"N	80°52'29.587"W	404.46	276.146	0.79	-0.72	-1.44	
5137.00	12.430	277.140	5096.26	-204.42	44.02	-407.51	1675836.73	14248852.39	39°14'19.125"N	80°52'29.655"W	409.88	276.165	1.11	-0.76	-3.72	
5162.00	12.410	275.530	5120.68	-207.11	44.61	-412.86	1675831.39	14248852.99	39°14'19.131"N	80°52'29.723"W	415.26	276.168	1.39	-0.08	-6.44	
5187.00	12.440	274.050	5145.09	-209.68	45.06	-418.22	1675826.03	14248853.44	39°14'19.136"N	80°52'29.791"W	420.64	276.150	1.27	0.12	-5.88	
5212.00	12.440	272.460	5169.50	-212.13	45.37	-423.59	1675820.66	14248853.74	39°14'19.139"N	80°52'29.860"W	426.02	276.113	1.38	0.00	-6.40	
5237.00	12.440	271.690	5193.92	-214.47	45.56	-428.98	1675815.28	14248853.94	39°14'19.141"N	80°52'29.928"W	431.39	276.063	0.66	0.00	-3.08	
5262.00	12.370	270.590	5218.33	-216.73	45.67	-434.34	1675809.91	14248854.04	39°14'19.142"N	80°52'29.996"W	436.74	276.003	0.99	-0.28	-4.40	
5287.00	12.290	270.200	5242.76	-218.92	45.71	-439.68	1675804.57	14248854.08	39°14'19.142"N	80°52'30.064"W	442.05	275.935	0.46	-0.32	-1.56	

RECEIVED  
Office of Oil and Gas  
NOV 30 2017  
WV Department of  
Environmental Protection



# Actual Wellpath Report

Mahogany Unit 1H AWP Proj: 17396'  
Page 9 of 16



REFERENCE WELLPATH IDENTIFICATION			
Operator	ANTERO RESOURCES CORPORATION		Slot #02
Area	Doddridge Co., WV		Well
Field	Doddridge		Wellbore
Facility	James Webb Pad		Mahogany Unit 1H AWP

WELLPATH DATA (370 stations)																
MD [ft]	Inclination [°]	Azimuth [°]	TVD [ft]	Vert Sect [ft]	North [ft]	East [ft]	Grid East [US ft]	Grid North [US ft]	Latitude	Longitude	Closure Dist [ft]	Closure Dir [°]	DLS [°/100ft]	Build Rate [°/100ft]	Turn Rate [°/100ft]	Comments
5312.00	12.210	269.320	5267.19	-221.03	45.69	-444.99	1675799.27	14248854.06	39°14'19.142"N	80°52'30.132"W	447.33	275.862	0.81	-0.32	-3.52	
5337.00	12.190	268.830	5291.62	-223.08	45.60	-450.27	1675793.99	14248853.97	39°14'19.141"N	80°52'30.199"W	452.57	275.783	0.42	-0.08	-1.96	
5362.00	12.080	265.210	5316.06	-224.95	45.33	-455.52	1675788.75	14248853.70	39°14'19.139"N	80°52'30.265"W	457.77	275.683	3.08	-0.44	-14.48	
5387.00	11.940	260.510	5340.52	-226.43	44.68	-460.67	1675783.59	14248853.06	39°14'19.133"N	80°52'30.331"W	462.83	275.540	3.95	-0.56	-18.80	
5412.00	11.800	257.140	5364.98	-227.55	43.89	-465.72	1675778.55	14248852.06	39°14'19.123"N	80°52'30.395"W	467.76	275.359	2.83	-0.56	-13.48	
5437.00	12.000	251.000	5389.45	-228.25	42.27	-470.67	1675773.60	14248850.65	39°14'19.109"N	80°52'30.458"W	472.56	275.132	5.12	0.80	-24.56	
5462.00	12.290	243.640	5413.89	-228.35	40.25	-475.51	1675768.76	14248848.62	39°14'19.089"N	80°52'30.520"W	477.21	274.838	6.30	1.16	-29.44	
5487.00	12.580	239.210	5438.30	-227.89	37.67	-480.23	1675764.04	14248846.05	39°14'19.063"N	80°52'30.580"W	481.71	274.485	3.99	1.16	-17.72	
5512.00	12.590	236.020	5462.70	-227.07	34.75	-484.83	1675759.45	14248843.13	39°14'19.035"N	80°52'30.638"W	486.07	274.100	2.78	0.04	-12.76	
5537.00	12.810	233.820	5487.09	-225.99	31.60	-489.32	1675754.95	14248839.97	39°14'19.004"N	80°52'30.695"W	490.34	273.694	2.13	0.88	-8.80	
5562.00	12.840	231.190	5511.47	-224.68	28.22	-493.73	1675750.55	14248836.60	39°14'18.970"N	80°52'30.751"W	494.53	273.271	2.34	0.12	-10.52	
5587.00	13.270	228.940	5535.82	-223.10	24.59	-498.05	1675746.22	14248832.97	39°14'18.934"N	80°52'30.806"W	498.66	272.827	2.66	1.72	-9.00	
5612.00	13.740	227.140	5560.13	-221.27	20.69	-502.39	1675741.89	14248829.07	39°14'18.896"N	80°52'30.862"W	502.82	272.358	2.52	1.88	-7.20	
5637.00	13.950	224.190	5584.40	-219.17	16.51	-506.67	1675737.61	14248824.89	39°14'18.855"N	80°52'30.916"W	506.94	271.866	2.95	0.84	-11.80	
5662.00	13.840	218.750	5608.67	-216.66	12.02	-510.64	1675733.64	14248820.40	39°14'18.810"N	80°52'30.967"W	510.78	271.348	5.24	-0.44	-21.76	
5687.00	14.110	214.960	5632.93	-213.69	7.19	-514.26	1675730.02	14248815.57	39°14'18.763"N	80°52'31.013"W	514.31	270.801	3.82	1.08	-15.16	
5712.00	14.720	212.200	5657.15	-210.33	2.00	-517.70	1675726.59	14248810.39	39°14'18.711"N	80°52'31.056"W	517.70	270.221	3.67	2.44	-11.04	
5737.00	14.740	209.380	5681.33	-206.65	-3.46	-520.95	1675723.34	14248804.93	39°14'18.657"N	80°52'31.098"W	520.96	269.620	2.87	0.08	-11.28	
5762.00	14.300	205.160	5705.53	-202.71	-9.02	-523.83	1675720.46	14248799.37	39°14'18.603"N	80°52'31.135"W	523.90	269.013	4.58	-1.76	-16.88	
5787.00	13.980	202.310	5729.77	-198.58	-14.61	-526.28	1675718.01	14248793.78	39°14'18.547"N	80°52'31.166"W	526.49	268.409	3.06	-1.28	-11.40	
5812.00	13.510	200.340	5754.06	-194.39	-20.15	-528.45	1675715.85	14248788.25	39°14'18.493"N	80°52'31.193"W	528.83	267.817	2.65	-1.88	-7.88	
5948.00	12.770	190.150	5886.51	-170.50	-49.84	-536.62	1675707.68	14248758.57	39°14'18.199"N	80°52'31.298"W	538.93	264.694	1.79	-0.54	-7.49	BHI AT Curve <8-1/2"> (5812')(5948'-17372')
5995.00	14.050	188.270	5932.23	-161.35	-60.60	-538.35	1675705.94	14248747.81	39°14'18.093"N	80°52'31.320"W	541.75	263.578	2.88	2.72	-4.00	
6044.00	13.740	172.060	5979.81	-150.71	-72.25	-538.41	1675705.89	14248736.17	39°14'17.978"N	80°52'31.321"W	543.23	262.357	7.94	-0.63	-33.08	
6092.00	14.480	150.380	6026.40	-139.24	-83.12	-534.65	1675709.64	14248725.30	39°14'17.870"N	80°52'31.273"W	541.07	261.163	11.05	1.54	-45.17	
6138.00	15.950	143.380	6070.79	-127.36	-93.20	-528.04	1675716.26	14248715.23	39°14'17.771"N	80°52'31.190"W	536.20	259.991	5.11	3.20	-15.22	
6184.00	17.260	145.720	6114.87	-114.49	-103.91	-520.42	1675723.87	14248704.52	39°14'17.665"N	80°52'31.093"W	530.69	258.709	3.20	2.85	5.09	
6233.00	19.860	148.370	6161.32	-99.09	-117.01	-511.96	1675732.32	14248691.43	39°14'17.535"N	80°52'30.986"W	525.16	257.127	5.58	5.31	5.41	
6280.00	24.840	149.830	6204.77	-81.36	-132.35	-502.81	1675741.47	14248676.10	39°14'17.383"N	80°52'30.870"W	519.93	255.253	10.66	10.60	3.11	
6327.00	30.140	152.170	6246.45	-59.77	-151.33	-492.33	1675751.95	14248657.12	39°14'17.196"N	80°52'30.737"W	515.06	252.914	11.51	11.28	4.98	

RECEIVED  
Office of Oil and Gas  
NOV 30 2017  
WV Department of  
Environmental Protection



# Actual Wellpath Report

Mahogany Unit 1H AWP Proj.: 17396

Page 10 of 16



## REFERENCE WELLPATH IDENTIFICATION

Operator	ANTERO RESOURCES CORPORATION
Area	Doddridge Co., WV
Field	Doddridge
Facility	James Webb Pad
Slot	Mahogany Unit 1H AWB
Slot #02	Mahogany Unit 1H

MD	Inclination	Azimuth	TVD	Vert Sect	North	East	Grid East	Grid North	Latitude	Longitude	Closure Dist	Closure Dir	DLS	Build Rate	Turn Rate	Comments
6374.00	34.980	153.020	6286.05	-34.53	-173.79	-480.70	1675763.57	14248634.67	39°14'16.97"N	80°52'30.58"W	511.15	250.124	10.34	10.30	1.81	
6416.00†	39.743	153.038	6319.43	-9.09	-166.49	-469.15	1675775.12	14248611.97	39°14'16.749"N	80°52'30.443"W	508.63	247.274	11.34	11.34	0.04	Middlesex: 6416 MD
6421.00	40.310	153.040	6323.26	-5.88	-199.36	-467.69	1675776.58	14248609.11	39°14'16.721"N	80°52'30.424"W	508.41	246.913	11.34	11.34	0.04	
6468.00	45.140	153.550	6357.77	25.95	-227.84	-453.37	1675790.89	14248580.64	39°14'16.439"N	80°52'30.243"W	507.40	243.318	10.30	10.28	1.09	
6516.00	50.260	154.530	6390.07	61.42	-259.76	-437.84	1675806.41	14248548.74	39°14'16.123"N	80°52'30.046"W	509.10	239.321	10.77	10.67	2.04	
6563.00	55.280	155.890	6418.50	98.82	-293.72	-422.17	1675822.08	14248514.78	39°14'15.787"N	80°52'29.848"W	514.30	235.172	10.93	10.68	2.89	
6599.00†	59.462	156.123	6437.90	-321.42	-409.85	1675834.40	14248487.10	39°14'15.513"N	80°52'29.691"W	520.85	231.895	11.63	11.62	0.65	Burkett: 6599 MD	
6610.00	60.740	156.190	6443.39	-330.14	-405.99	1675838.25	14248478.38	39°14'15.427"N	80°52'29.643"W	523.28	230.883	11.63	11.62	0.61		
6657.00	65.180	156.560	6464.75	-368.48	-389.22	1675855.01	14248440.05	39°14'15.048"N	80°52'29.430"W	535.98	226.568	9.47	9.45	0.79		
6658.00†	65.279	156.560	6465.17	-369.32	-388.86	1675855.37	14248439.22	39°14'15.040"N	80°52'29.426"W	536.29	226.477	9.92	9.92	0.00	Tully: 6658 MD	
6705.00	69.940	156.580	6483.06	-409.18	-371.59	1675872.64	14248399.37	39°14'14.645"N	80°52'29.207"W	552.72	222.243	9.92	9.92	0.04	Hamilton: 6705 MD	
6732.00†	73.306	156.836	6491.57	-432.71	-361.46	1675882.77	14248375.85	39°14'14.413"N	80°52'29.078"W	563.82	219.873	12.50	12.47	0.95	Marcellus POE: 6732 MD	
6752.00	75.800	157.020	6496.90	-450.45	-353.90	1675890.32	14248358.12	39°14'14.237"N	80°52'28.983"W	572.84	218.156	12.50	12.47	0.92		
6800.00	80.320	157.550	6506.83	-493.75	-335.78	1675908.44	14248314.83	39°14'13.809"N	80°52'28.753"W	597.11	214.217	9.48	9.42	1.10		
6844.00	85.190	158.120	6512.38	-534.31	-319.67	1675924.54	14248274.30	39°14'13.408"N	80°52'28.549"W	622.63	210.892	11.62	11.07	3.57		
6894.00	89.970	158.850	6514.49	-580.93	-301.76	1675942.44	14248227.70	39°14'12.947"N	80°52'28.322"W	654.63	207.449	9.58	9.56	-0.54		
6898.00	90.580	155.690	6514.03	-668.54	-265.06	1675979.13	14248140.12	39°14'12.081"N	80°52'27.857"W	719.16	201.627	3.39	3.39	-3.33		
7083.00	89.910	156.510	6513.63	-754.47	-226.98	1676017.20	14248054.22	39°14'11.231"N	80°52'27.375"W	787.88	196.743	1.13	-0.71	0.87		
7178.00	89.880	159.010	6513.80	-842.40	-191.02	1676053.13	14247966.33	39°14'10.361"N	80°52'26.920"W	863.79	192.776	2.63	-0.03	2.63		
7272.00	89.910	158.080	6513.98	-929.88	-166.64	1676087.50	14247878.88	39°14'09.496"N	80°52'26.484"W	942.98	189.562	0.99	0.03	-0.99		
7367.00	89.940	155.350	6514.10	-1017.14	-119.09	1676125.04	14247791.66	39°14'08.633"N	80°52'26.008"W	1024.09	186.678	2.87	0.03	-2.87		
7461.00	89.910	153.300	6514.22	-1101.85	-78.37	1676165.75	14247706.98	39°14'07.795"N	80°52'25.492"W	1104.64	184.068	2.18	-0.03	-2.18		
7555.00	89.820	153.220	6514.44	-1185.80	-36.07	1676208.02	14247623.07	39°14'06.965"N	80°52'24.956"W	1186.35	181.742	0.13	-0.10	-0.09		
7650.00	89.970	152.130	6514.62	-1270.20	7.54	1676251.61	14247538.70	39°14'06.130"N	80°52'24.404"W	1270.22	179.660	1.16	-0.16	-1.15		
7744.00	89.780	153.360	6514.82	-1353.76	50.58	1676294.64	14247455.17	39°14'05.304"N	80°52'23.858"W	1354.70	177.860	1.32	-0.20	1.31		
7839.00	90.370	155.870	6514.70	-1439.58	91.31	1676335.35	14247369.39	39°14'04.455"N	80°52'23.342"W	1442.47	176.371	2.71	0.62	2.64		
7933.00	90.150	159.420	6514.27	-1526.50	127.05	1676371.08	14247282.50	39°14'03.595"N	80°52'22.889"W	1531.78	175.242	3.78	-0.23	3.78		
8028.00	90.400	163.010	6513.82	-1616.42	157.64	1676401.66	14247192.61	39°14'02.706"N	80°52'22.502"W	1624.09	174.430	3.79	0.26	3.78		
8122.00	90.650	163.840	6512.96	-1706.51	184.45	1676428.46	14247102.56	39°14'01.815"N	80°52'22.163"W	1716.45	173.831	0.92	0.27	0.88		
8217.00	90.120	158.410	6512.32	-1796.37	215.17	1676459.17	14247012.74	39°14'00.927"N	80°52'21.774"W	1809.21	173.170	5.74	-0.56	-5.72		

WELLPATH DATA (370 stations) † = Interpolated/extrapolated station

RECEIVED  
Office of Oil and Gas

NOV 30 2017

WV Department of  
Environmental Protection



# Actual Wellpath Report

Mahogany Unit 1H AWP Proj: 17396

Page 11 of 16



REFERENCE WELLPATH IDENTIFICATION			
Operator	ANTERO RESOURCES CORPORATION	Slot	Slot #02
Area	Doddridge Co., WV	Well	Mahogany Unit 1H
Field	Doddridge	Wellbore	Mahogany Unit 1H AWB
Facility	James Webb Pad		

WELLPATH DATA (370 stations)												
MD	Inclination	Azimuth	TVD	Vert Sect	North	East	Grid East	Grid North	Latitude	Longitude	Closure Dist	Closure Dir
(m)	(°)	(°)	(m)	(m)	(m)	(m)	(m)	(m)	(°)	(°)	(m)	(°)
8311.00	90.280	155.410	6511.99	1824.88	-1882.83	252.03	1676496.01	14246926.32	39°14'00.07"N	80°52'21.30"W	1899.62	172.376
806.00	90.120	152.680	6511.66	1919.80	-1968.24	293.61	1676537.57	14246840.94	39°13'59.22"N	80°52'20.78"W	1990.02	171.516
8500.00	90.180	151.710	6511.41	2013.56	-2051.38	337.45	1676581.40	14246757.83	39°13'58.40"N	80°52'20.22"W	2078.95	170.658
8895.00	90.180	151.730	6511.11	2108.27	-2135.04	382.46	1676626.39	14246764.20	39°13'57.57"N	80°52'19.65"W	2169.03	169.844
8690.00	90.090	153.310	6510.89	2203.06	-2219.32	426.30	1676670.21	14246589.96	39°13'56.74"N	80°52'19.09"W	2259.89	169.127
8784.00	89.910	155.400	6510.89	2297.01	-2304.06	466.98	1676710.87	14246505.25	39°13'55.90"N	80°52'18.58"W	2350.90	168.543
8878.00	90.030	158.180	6510.94	2390.99	-2390.44	504.02	1676747.90	14246418.91	39°13'55.05"N	80°52'18.14"W	2443.00	168.094
8973.00	89.880	157.990	6511.01	2485.94	-2478.58	539.48	1676783.34	14246330.81	39°13'54.17"N	80°52'17.66"W	2536.61	167.721
9067.00	90.490	160.220	6510.71	2579.82	-2566.39	573.00	1676816.85	14246243.03	39°13'53.31"N	80°52'17.24"W	2629.58	167.414
9162.00	90.430	159.410	6509.95	2674.63	-2655.55	605.78	1676849.62	14246153.90	39°13'52.42"N	80°52'16.82"W	2723.77	167.150
9256.00	90.430	156.780	6509.24	2768.57	-2742.75	640.84	1676884.67	14246066.73	39°13'51.56"N	80°52'16.38"W	2816.63	166.849
9351.00	90.490	154.440	6508.48	2863.56	-2829.27	680.07	1676923.88	14245980.26	39°13'50.71"N	80°52'15.88"W	2909.85	166.484
9445.00	90.060	156.190	6508.03	2957.54	-2914.67	719.33	1676963.12	14245894.88	39°13'49.86"N	80°52'15.38"W	3002.12	166.137
9546.00	90.520	157.160	6507.52	3058.53	-3007.42	759.31	1677003.09	14245802.18	39°13'48.94"N	80°52'14.88"W	3101.79	165.830
9634.00	90.310	156.980	6506.88	3146.52	-3088.46	793.60	1677037.36	14245721.17	39°13'48.14"N	80°52'14.47"W	3188.79	165.589
9729.00	90.490	156.370	6506.21	3241.52	-3175.69	831.21	1677074.96	14245633.97	39°13'47.28"N	80°52'13.97"W	3282.67	165.332
9823.00	90.340	157.080	6505.53	3335.51	-3262.04	868.36	1677112.09	14245547.66	39°13'46.43"N	80°52'13.50"W	3375.64	165.094
9917.00	90.430	157.830	6504.90	3429.49	-3348.85	904.39	1677148.11	14245460.88	39°13'45.57"N	80°52'13.04"W	3468.83	164.887
10012.00	90.460	157.910	6504.16	3524.45	-3436.85	940.18	1677183.88	14245372.91	39°13'44.70"N	80°52'12.59"W	3563.13	164.701
10106.00	89.380	154.970	6504.30	3618.43	-3523.01	977.75	1677221.44	14245286.79	39°13'43.85"N	80°52'12.15"W	3656.17	164.489
10201.00	90.400	153.740	6504.48	3713.38	-3608.65	1018.86	1677262.53	14245201.19	39°13'43.00"N	80°52'11.59"W	3749.72	164.234
10295.00	90.490	153.200	6503.75	3807.26	-3692.74	1060.85	1677304.50	14245117.12	39°13'42.17"N	80°52'11.06"W	3842.10	163.972
10390.00	89.850	152.960	6503.47	3902.12	-3777.45	1103.86	1677347.50	14245032.45	39°13'41.33"N	80°52'10.51"W	3935.43	163.710
10484.00	89.780	153.790	6503.77	3996.00	-3861.48	1145.98	1677389.61	14244948.46	39°13'40.50"N	80°52'09.98"W	4027.94	163.471
10578.00	89.660	154.860	6504.23	4089.94	-3946.20	1186.71	1677430.31	14244863.77	39°13'39.66"N	80°52'09.46"W	4120.77	163.263
10673.00	90.120	155.040	6504.41	4184.92	-4032.26	1226.93	1677470.52	14244777.74	39°13'38.81"N	80°52'08.95"W	4214.79	163.076
10767.00	89.570	154.310	6504.67	4278.88	-4117.23	1267.14	1677510.71	14244692.81	39°13'37.97"N	80°52'08.44"W	4307.81	162.893
10862.00	90.520	152.350	6504.99	4373.75	-4202.11	1309.78	1677553.34	14244607.96	39°13'37.13"N	80°52'07.90"W	4401.51	162.688
10958.00	89.380	151.980	6504.67	4469.51	-4287.00	1354.60	1677598.14	14244523.10	39°13'36.29"N	80°52'07.34"W	4495.93	162.465
11051.00	89.350	150.490	6505.71	4562.14	-4368.52	1399.35	1677642.87	14244441.62	39°13'35.48"N	80°52'06.77"W	4587.17	162.238

RECEIVED  
Office of Oil and Gas  
NOV 30 2017  
WV Department of  
Environmental Protection



# Actual Wellpath Report

Mahogany Unit 1H AWP Proj #: 17396

Page 12 of 16



## REFERENCE WELLPATH IDENTIFICATION

Operator	ANTERO RESOURCES CORPORATION	Slot	Slot #02
Area	Doddridge Co., WV	Well	Mahogany Unit 1H
Field	Doddridge	Wellbore	Mahogany Unit 1H AWB
Facility	James Webb Pad		

WELLPATH DATA (370 stations) † = Interpolated/extrapolated station												
MD	Inclination	Azimuth	TDP	Vert Sect	North	East	Grid East	Grid North	Latitude	Longitude	Closure Dist	Closure Dir
ft	ft	ft	ft	ft	ft	ft	ft	ft	ft	ft	ft	ft
1145.00	89.450	153.340	6506.69	4655.86	-4451.44	1443.60	1677887.10	14244358.73	39°13'34.66"N	80°52'06.21"W	4679.67	162.032
11239.00	89.690	157.390	6507.40	4749.82	-4536.86	1482.77	1677726.26	14244273.34	39°13'33.82"N	80°52'05.71"W	4773.02	161.901
11334.00	89.630	160.070	6507.96	4844.73	-4625.38	1517.23	1677760.70	14244184.86	39°13'32.94"N	80°52'05.28"W	4867.87	161.839
11428.00	89.820	160.620	6508.41	4938.48	-4713.90	1548.85	1677922.31	14244096.37	39°13'32.07"N	80°52'04.88"W	4961.84	161.811
11523.00	89.750	158.600	6508.77	5033.32	-4802.95	1581.95	1677825.39	14244007.37	39°13'31.19"N	80°52'04.46"W	5056.76	161.770
11617.00	89.780	157.880	6509.15	5127.26	-4890.25	1616.79	1677860.23	14243920.10	39°13'30.32"N	80°52'04.01"W	5150.59	161.705
11712.00	89.910	156.610	6509.41	5222.24	-4977.85	1653.54	1677896.95	14243832.53	39°13'29.46"N	80°52'03.55"W	5245.30	161.625
11806.00	89.720	154.480	6510.18	5411.20	-5149.50	1732.61	1677976.00	14243660.95	39°13'27.76"N	80°52'02.55"W	5433.17	161.404
11901.00	89.720	154.480	6510.18	5411.20	-5149.50	1732.61	1677976.00	14243660.95	39°13'27.76"N	80°52'02.55"W	5433.17	161.404
11994.00	90.220	155.010	6510.23	5504.17	-5233.61	1772.29	1678015.66	14243576.88	39°13'26.93"N	80°52'02.05"W	5526.55	161.292
12088.00	90.400	157.720	6509.72	5598.16	-5319.71	1809.97	1678053.33	14243490.81	39°13'26.08"N	80°52'01.57"W	5619.20	161.210
12183.00	90.460	160.930	6509.00	5693.00	-5408.58	1843.51	1678086.85	14243401.97	39°13'25.20"N	80°52'01.14"W	5714.13	161.178
12277.00	89.850	162.130	6508.75	5768.60	-5497.74	1873.29	1678116.62	14243312.85	39°13'24.31"N	80°52'00.77"W	5808.13	161.184
12372.00	89.970	160.650	6508.90	5881.22	-5587.77	1903.60	1678146.92	14243222.86	39°13'23.42"N	80°52'00.38"W	5903.12	161.187
12467.00	89.850	159.120	6509.05	5976.02	-5676.97	1936.27	1678179.58	14243133.69	39°13'22.54"N	80°51'59.97"W	5998.10	161.167
12561.00	90.310	159.460	6508.92	6069.89	-5764.90	1969.52	1678212.81	14243045.80	39°13'21.67"N	80°51'59.55"W	6092.05	161.138
12650.00	90.395	157.491	6508.37	6158.82	-5847.68	2002.17	1678245.45	14242963.05	39°13'20.85"N	80°51'59.14"W	6180.94	161.099
12655.00	90.400	157.380	6508.33	6163.82	-5852.30	2004.09	1678247.36	14242958.43	39°13'20.81"N	80°51'59.11"W	6185.93	161.097
12750.00	90.520	152.310	6507.57	6258.75	-5938.26	2044.45	1678287.72	14242872.51	39°13'19.96"N	80°51'58.60"W	6280.34	161.002
12844.00	90.280	149.220	6506.92	6323.31	-6020.27	2090.36	1678333.60	14242790.53	39°13'19.15"N	80°51'58.02"W	6372.86	160.852
12939.00	90.340	151.750	6506.40	6446.82	-6102.94	2137.15	1678380.38	14242707.90	39°13'18.33"N	80°51'57.43"W	6466.32	160.701
13033.00	90.430	156.100	6505.84	6540.69	-6186.99	2179.20	1678422.41	14242623.87	39°13'17.50"N	80°51'56.89"W	6559.56	160.597
13128.00	90.430	156.720	6505.20	6635.68	-6273.71	2217.97	1678461.17	14242537.19	39°13'16.64"N	80°51'56.40"W	6654.24	160.530
13222.00	90.400	159.070	6504.52	6729.64	-6360.80	2253.34	1678496.52	14242450.14	39°13'15.78"N	80°51'55.95"W	6748.13	160.493
13316.00	90.030	160.040	6504.17	6823.48	-6448.87	2286.18	1678529.34	14242362.10	39°13'14.91"N	80°51'55.54"W	6842.12	160.480
13411.00	89.290	158.810	6504.73	6918.33	-6537.81	2319.56	1678562.71	14242273.20	39°13'14.03"N	80°51'55.12"W	6937.10	160.466
13505.00	89.820	158.650	6505.46	7012.24	-6625.40	2353.66	1678596.80	14242185.64	39°13'13.16"N	80°51'54.68"W	7031.05	160.443
13599.00	89.910	156.490	6505.69	7106.21	-6712.29	2389.52	1678632.65	14242098.79	39°13'12.30"N	80°51'54.23"W	7124.93	160.405
13694.00	89.850	156.600	6505.89	7201.20	-6799.44	2427.34	1678670.44	14242011.68	39°13'11.44"N	80°51'53.76"W	7219.72	160.354
13788.00	89.880	157.600	6506.11	7295.19	-6886.03	2463.91	1678707.01	14241925.12	39°13'10.58"N	80°51'53.29"W	7313.57	160.312

Top of Fish: 12650' MD

RECEIVED  
Office of Oil and Gas  
NOV 30 2017  
WV Department of  
Environmental Protection



# Actual Wellpath Report

Mahogany Unit 1H AWP Proj: 17396'  
Page 13 of 16



Operator	Area	Field	Facility
ANTERO RESOURCES CORPORATION	Doddridge Co., WV	Doddridge	James Webb Pad
	Mahogany Unit 1H	Well	Mahogany Unit 1H AWB
	Slot #02		

WELLPATH DATA (370 stations) † = interpolated/extrapolated station												
MD	Inclination	Azimuth	TVD	Vert Sect	North	East	Grid East	Grid North	Latitude	Longitude	Closure Dist	Closure Dir
[m]	[°]	[°]	[m]	[m]	[m]	[m]	[m]	[m]	[m]	[m]	[m]	[°]
13882.00	157.630	6505.65	7389.16	-6972.94	2499.71	1678742.79	14241838.24	39°13'09".730"N	80°51'52.840"W	7407.46	160.278	0.85
90.680	157.630	6505.65	7389.16	-6972.94	2499.71	1678742.79	14241838.24	39°13'09".730"N	80°51'52.840"W	7407.46	160.278	0.85
13977.00	155.030	6504.85	7484.15	-7059.94	2537.85	1678780.91	14241751.28	39°13'08.869"N	80°51'52.357"W	7502.23	160.228	2.77
90.280	155.030	6504.85	7484.15	-7059.94	2537.85	1678780.91	14241751.28	39°13'08.869"N	80°51'52.357"W	7502.23	160.228	2.77
14071.00	152.310	6504.37	7578.05	-7144.18	2579.53	1678822.58	14241667.07	39°13'08.036"N	80°51'51.829"W	7595.61	160.147	2.89
90.310	152.310	6504.37	7578.05	-7144.18	2579.53	1678822.58	14241667.07	39°13'08.036"N	80°51'51.829"W	7595.61	160.147	2.89
14166.00	151.200	6504.39	7672.75	-7227.87	2624.49	1678867.52	14241583.42	39°13'07.208"N	80°51'51.259"W	7689.60	160.044	1.35
90.660	151.200	6504.39	7672.75	-7227.87	2624.49	1678867.52	14241583.42	39°13'07.208"N	80°51'51.259"W	7689.60	160.044	1.35
14260.00	152.060	6504.52	7766.45	-7310.57	2669.16	1678912.17	14241500.74	39°13'06.390"N	80°51'50.693"W	7782.60	159.942	1.07
90.180	152.060	6504.52	7766.45	-7310.57	2669.16	1678912.17	14241500.74	39°13'06.390"N	80°51'50.693"W	7782.60	159.942	1.07
14354.00	152.610	6503.84	7860.22	-7393.83	2712.80	1678955.79	14241417.53	39°13'05.566"N	80°51'50.140"W	7875.78	159.852	0.77
90.650	152.610	6503.84	7860.22	-7393.83	2712.80	1678955.79	14241417.53	39°13'05.566"N	80°51'50.140"W	7875.78	159.852	0.77
14449.00	155.420	6503.51	7955.14	-7479.21	2754.42	1678997.39	14241332.17	39°13'04.722"N	80°51'49.613"W	7970.28	159.782	3.11
89.750	155.420	6503.51	7955.14	-7479.21	2754.42	1678997.39	14241332.17	39°13'04.722"N	80°51'49.613"W	7970.28	159.782	3.11
14543.00	157.250	6504.07	8049.13	-7565.30	2792.15	1679035.11	14241248.12	39°13'03.870"N	80°51'49.136"W	8064.11	159.742	1.96
89.570	157.250	6504.07	8049.13	-7565.30	2792.15	1679035.11	14241248.12	39°13'03.870"N	80°51'49.136"W	8064.11	159.742	1.96
14637.00	157.860	6504.63	8143.11	-7652.18	2828.03	1679070.98	14241159.28	39°13'03.011"N	80°51'48.681"W	8158.04	159.717	0.68
89.750	157.860	6504.63	8143.11	-7652.18	2828.03	1679070.98	14241159.28	39°13'03.011"N	80°51'48.681"W	8158.04	159.717	0.68
14731.00	156.610	6505.21	8237.09	-7738.85	2864.41	1679107.34	14241072.64	39°13'02.154"N	80°51'48.221"W	8251.95	159.689	1.35
89.540	156.610	6505.21	8237.09	-7738.85	2864.41	1679107.34	14241072.64	39°13'02.154"N	80°51'48.221"W	8251.95	159.689	1.35
14826.00	157.190	6505.69	8332.08	-7826.23	2901.68	1679144.59	14240985.29	39°13'01.290"N	80°51'47.749"W	8346.84	159.657	0.71
89.880	157.190	6505.69	8332.08	-7826.23	2901.68	1679144.59	14240985.29	39°13'01.290"N	80°51'47.749"W	8346.84	159.657	0.71
14920.00	158.660	6506.04	8426.04	-7913.34	2937.00	1679179.91	14240898.22	39°13'00.428"N	80°51'47.302"W	8440.79	159.638	1.58
89.690	158.660	6506.04	8426.04	-7913.34	2937.00	1679179.91	14240898.22	39°13'00.428"N	80°51'47.302"W	8440.79	159.638	1.58
15015.00	157.430	6506.61	8520.99	-8001.45	2972.52	1679215.41	14240810.15	39°12'59.557"N	80°51'46.852"W	8535.75	159.620	1.30
89.630	157.430	6506.61	8520.99	-8001.45	2972.52	1679215.41	14240810.15	39°12'59.557"N	80°51'46.852"W	8535.75	159.620	1.30
15109.00	157.660	6507.21	8614.96	-8088.32	3008.42	1679251.30	14240723.31	39°12'58.698"N	80°51'46.398"W	8629.69	159.597	0.24
89.630	157.660	6507.21	8614.96	-8088.32	3008.42	1679251.30	14240723.31	39°12'58.698"N	80°51'46.398"W	8629.69	159.597	0.24
15204.00	157.530	6507.45	8709.94	-8176.15	3044.63	1679287.49	14240635.52	39°12'57.829"N	80°51'45.939"W	8724.63	159.576	0.50
90.090	157.530	6507.45	8709.94	-8176.15	3044.63	1679287.49	14240635.52	39°12'57.829"N	80°51'45.939"W	8724.63	159.576	0.50
15298.00	156.420	6507.27	8803.93	-8262.66	3081.40	1679324.24	14240549.04	39°12'56.974"N	80°51'45.474"W	8818.53	159.548	1.18
89.120	156.420	6507.27	8803.93	-8262.66	3081.40	1679324.24	14240549.04	39°12'56.974"N	80°51'45.474"W	8818.53	159.548	1.18
15392.00	156.060	6507.10	8897.93	-8348.69	3119.27	1679362.10	14240463.04	39°12'56.123"N	80°51'44.994"W	8912.38	159.513	0.38
90.090	156.060	6507.10	8897.93	-8348.69	3119.27	1679362.10	14240463.04	39°12'56.123"N	80°51'44.994"W	8912.38	159.513	0.38
15487.00	156.200	6508.95	8992.93	-8435.56	3157.71	1679400.53	14240376.21	39°12'55.263"N	80°51'44.508"W	9007.21	159.477	0.15
90.090	156.200	6508.95	8992.93	-8435.56	3157.71	1679400.53	14240376.21	39°12'55.263"N	80°51'44.508"W	9007.21	159.477	0.15
15581.00	156.990	6508.80	9066.92	-8521.83	3195.05	1679437.85	14240289.98	39°12'54.410"N	80°51'44.035"W	9101.09	159.448	0.84
90.090	156.990	6508.80	9066.92	-8521.83	3195.05	1679437.85	14240289.98	39°12'54.410"N	80°51'44.035"W	9101.09	159.448	0.84
15587.00†	156.950	6508.80	9092.92	-8527.35	3197.40	1679440.20	14240284.46	39°12'54.356"N	80°51'44.005"W	9107.09	159.446	0.68
90.082	156.950	6508.80	9092.92	-8527.35	3197.40	1679440.20	14240284.46	39°12'54.356"N	80°51'44.005"W	9107.09	159.446	0.68
15675.00	156.360	6508.76	9180.92	-8608.15	3232.27	1679475.06	14240203.69	39°12'53.557"N	80°51'43.564"W	9194.99	159.419	0.68
89.970	156.360	6508.76	9180.92	-8608.15	3232.27	1679475.06	14240203.69	39°12'53.557"N	80°51'43.564"W	9194.99	159.419	0.68
15769.00	156.780	6508.92	9274.92	-8694.39	3269.65	1679512.42	14240117.48	39°12'52.704"N	80°51'43.091"W	9288.87	159.391	0.45
90.000	156.780	6508.92	9274.92	-8694.39	3269.65	1679512.42	14240117.48	39°12'52.704"N	80°51'43.091"W	9288.87	159.391	0.45
15864.00	157.270	6508.90	9369.91	-8781.86	3306.73	1679549.49	14240030.05	39°12'51.838"N	80°51'42.621"W	9383.79	159.367	0.54
89.850	157.270	6508.90	9369.91	-8781.86	3306.73	1679549.49	14240030.05	39°12'51.838"N	80°51'42.621"W	9383.79	159.367	0.54
15958.00	156.680	6507.05	9463.90	-8868.37	3343.50	1679586.24	14239943.57	39°12'50.983"N	80°51'42.156"W	9477.71	159.343	0.64
89.970	156.680	6507.05	9463.90	-8868.37	3343.50	1679586.24	14239943.57	39°12'50.983"N	80°51'42.156"W	9477.71	159.343	0.64
16052.00	156.380	6508.98	9557.90	-8954.59	3380.93	1679623.66	14239857.38	39°12'50.130"N	80°51'41.682"W	9571.60	159.315	0.36
90.120	156.380	6508.98	9557.90	-8954.59	3380.93	1679623.66	14239857.38	39°12'50.130"N	80°51'41.682"W	9571.60	159.315	0.36
16147.00	156.460	6506.60	9652.90	-9041.66	3418.94	1679661.65	14239770.35	39°12'49.269"N	80°51'41.201"W	9666.47	159.287	0.25
90.340	156.460	6506.60	9652.90	-9041.66	3418.94	1679661.65	14239770.35	39°12'49.269"N	80°51'41.201"W	9666.47	159.287	0.25
16241.00	157.170	6508.14	9746.89	-9128.07	3455.94	1679698.64	14239683.98	39°12'48.414"N	80°51'40.732"W	9760.39	159.263	0.77
90.220	157.170	6508.14	9746.89	-9128.07	3455.94	1679698.64	14239683.98	39°12'48.414"N	80°51'40.732"W	9760.39	159.263	0.77
16335.00	160.930	6506.19	9840.76	-9215.84	3489.55	1679732.23	14239596.25	39°12'47.546"N	80°51'40.307"W	9854.37	159.261	4.04
89.720	160.930	6506.19	9840.76	-9215.84	3489.55	1679732.23	14239596.25	39°12'47.546"N	80°51'40.307"W	9854.37	159.261	4.04
16430.00	159.640	6506.52	9935.53	-9305.26	3521.59	1679764.26	14239506.85	39°12'46.662"N	80°51'39.901"W	9949.35	159.271	1.37
89.880	159.640	6506.52	9935.53	-9305.26	3521.59	1679764.26	14239506.85	39°12'46.662"N	80°51'39.901"W	9949.35	159.271	1.37
16524.00	158.390	6506.87	10029.41	-9393.03	3555.26	1679797.91	14239419.12	39°12'45.794"N	80°51'39.476"W	10043.35	159.268	1.35
89.690	158.390	6506.87	10029.41	-9393.03	3555.26	1679797.91	14239419.12	39°12'45.794"N	80°51'39.476"W	10043.35	159.268	1.35

RECEIVED  
Office of Oil and Gas  
NOV 30 2017  
WV Department of  
Environmental Protection



# Actual Wellpath Report

Mahogany Unit 1H AWP Proj: 17396



## REFERENCE WELLPATH IDENTIFICATION

Operator	ANTERO RESOURCES CORPORATION	Slot	Slot #02
Area	Doddridge Co., WV	Well	Mahogany Unit 1H AWP
Field	Doddridge	Wellbore	Mahogany Unit 1H AWP
Facility	James Webb Pad		

## WELLPATH DATA (370 stations)

MD	Inclination	Azimuth	TVD	Vert Sect	North	East	Grid East	Grid North	Latitude	Longitude	Closure Dist	Closure Dir	DLS	Build Rate	Turn Rate	Comments
16619.00	89.750	6507.34	10124.39	-9480.09	3593.21	1679835.85	14239332.09	39°12'44.93"N	80°51'38.995"W	10138.21	159.242	4.10	0.06	-4.09		
16713.00	89.780	6507.72	10218.32	-9564.55	3634.48	1679877.10	14239247.67	39°12'44.098"N	80°51'38.472"W	10231.82	159.193	1.15	0.03	-1.15		
16808.00	89.780	6508.09	10313.22	-9649.68	3676.65	1679919.26	14239162.58	39°12'43.256"N	80°51'37.938"W	10326.37	159.143	0.47	0.00	0.47		
16902.00	89.880	6508.36	10407.15	-9734.28	3717.62	1679960.21	14239078.01	39°12'42.419"N	80°51'37.419"W	10420.02	159.098	0.63	0.11	0.62		
16997.00	89.780	6508.65	10502.10	-9819.93	3758.71	1680001.29	14238992.40	39°12'41.572"N	80°51'36.899"W	10514.70	159.055	0.20	-0.11	-0.17		
17091.00	89.880	6508.93	10596.04	-9904.57	3799.60	1680042.16	14238907.79	39°12'40.734"N	80°51'36.381"W	10608.37	159.012	0.19	0.11	-0.16		
17186.00	89.820	6509.17	10690.95	-9989.76	3841.64	1680084.18	14238822.63	39°12'39.892"N	80°51'35.849"W	10702.97	158.965	0.84	-0.06	-0.84		
17280.00	89.910	6509.40	10784.84	-10073.87	3883.61	1680126.13	14238738.55	39°12'39.060"N	80°51'35.317"W	10796.54	158.918	0.31	0.10	0.30		
17372.00	89.780	6509.64	10876.76	-10156.50	3924.06	1680166.57	14238655.96	39°12'38.242"N	80°51'34.805"W	10888.19	158.875	0.66	-0.14	0.64		
17396.00	89.780	6509.74	10900.75	-10178.11	3934.50	1680177.01	14238634.36	39°12'38.029"N	80°51'34.673"W	10912.11	158.865	0.00	0.00	0.00		Projected MD at TD: 17396

## HOLE & CASING SECTIONS - Ref Wellbore: Mahogany Unit 1H AWB

String/Diameter	Start MD	End MD	Interval	Start TVD	End TVD	Start N/S	Start EW	End N/S	End EW
20in Conductor	25.00	65.00	40.00	25.00	65.00	0.00	0.00	0.00	0.04
13.375in Casing Surface	25.00	465.00	440.00	25.00	464.99	0.00	0.00	0.00	1.59
9.625in Casing Intermediate	25.00	2596.00	2571.00	25.00	2593.98	0.00	0.00	0.00	-40.17

RECEIVED  
Office of Oil and Gas  
NOV 30 2017  
WV Department of  
Environmental Protection



# Actual Wellpath Report

Mahogany Unit 1H AWP Proj: 17396'  
Page 15 of 16



REFERENCE WELLPATH IDENTIFICATION			
Operator	ANTERO RESOURCES CORPORATION	Slot	Slot #02
Area	Doddridge Co., WV	Well	Mahogany Unit 1H
Field	Doddridge	Wellbore	Mahogany Unit 1H AWB
Facility	James Webb Pad		

TARGETS								
Name	TVD [ft]	North [ft]	East [ft]	Grid East [US ft]	Grid North [US ft]	Latitude	Longitude	Shape
Mahogany Unit 1H POE Rev-2	6491.00	-423.59	-368.80	1675875.43	14248384.97	39°14'14.503"N	80°52'29.172"W	point
Mahogany Unit 1H BHL Rev-2	6514.00	-10184.05	3926.86	1680169.37	14238628.42	39°12'37.970"N	80°51'34.770"W	point
Mahogany Unit 1H LP Rev-2	6514.00	-557.59	-309.82	1675934.38	14248251.02	39°14'13.178"N	80°52'28.424"W	point

WELLPATH COMPOSITION - Ref Wellbore: Mahogany Unit 1H AWB      Ref Wellpath: Mahogany Unit 1H AWP Proj: 17396'					
Start MD [ft]	End MD [ft]	Positional Uncertainty Model	Log Name/Comment		Wellbore
25.00	5812.00	SDI Keeper v1.04	01 SDI Std. Keeper Gyro (100' - 5800')		Mahogany Unit 1H AWB
5812.00	17372.00	BHI AutoTrak Curve (Short)	02 BHI AT Curve <8-1/2"> (5812')(5948'-17372')		Mahogany Unit 1H AWB
17372.00	17396.00	Blind Drilling (std)	Projection to bit		Mahogany Unit 1H AWB

RECEIVED  
Office of Oil and Gas  
  
NOV 30 2017  
  
WV Department of  
Environmental Protection