



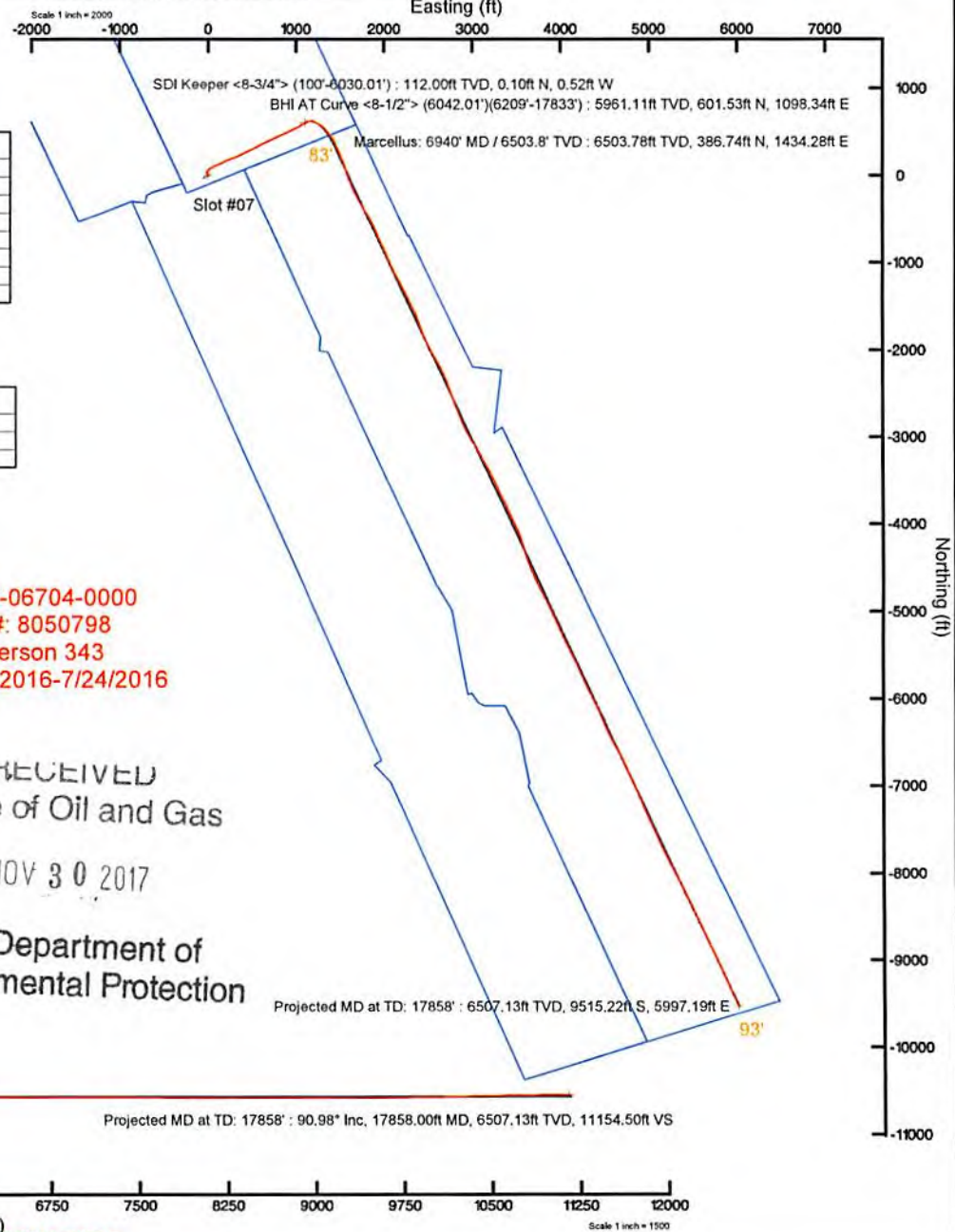
ANTERO RESOURCES CORPORATION

Location: Doddridge Co., WV
 Field: Doddridge
 Facility: James Webb Pad

Slot: Slot #07
 Well: Hunter Unit 2H
 Wellbore: Hunter Unit 2H PWB



Plot reference wellpath is Hunter Unit 2H PWB Rev-A.0	Grid System: NAD27 / UTM Zone 17 North, US feet
True vertical depths are referenced to Patterson 343 (RKB)	* = Wellpath was transformed from a different geoidic datum
Measured depths are referenced to Patterson 343 (RKB)	North Reference: Grid north
Patterson 343 (RKB) to Mean Sea Level: 1016 feet	Scale: True distance
Mean Sea Level to Mud line (At Slot: Slot #07): -991 feet	Depths are in feet
Coordinates are in feet referenced to Slot	Created by: edsayar on 2016-09-14
	Database: WA_MPL_EASTERNUS_Defn

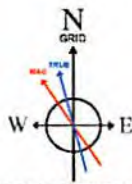
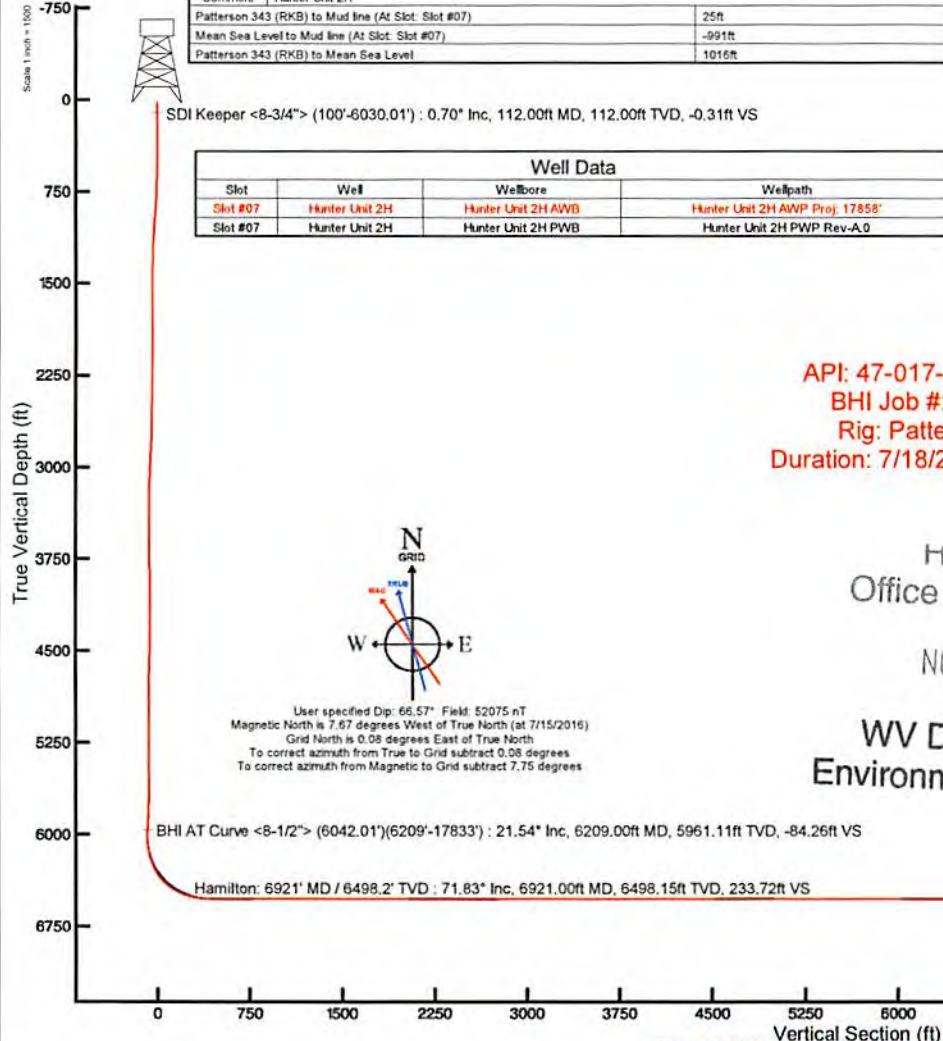


Location Information				
Facility Name	Grid East (US ft)	Grid North (US ft)	Latitude	Longitude
James Webb Pad	1676270.820	14248823.840	39°14'18.837"N	80°52'24.137"W
Slot	Local N (ft)	Local E (ft)	Grid East (US ft)	Grid North (US ft)
Slot #07	9.29	17.85	1676288.660	14248833.130
			Latitude	Longitude
Slot #07			39°14'18.929"N	80°52'23.910"W
Comment				
Hunter Unit 2H				
Patterson 343 (RKB) to Mud line (At Slot: Slot #07)			25ft	
Mean Sea Level to Mud line (At Slot: Slot #07)			-991ft	
Patterson 343 (RKB) to Mean Sea Level			1016ft	

Well Data			
Slot	Well	Wellbore	Wellpath
Slot #07	Hunter Unit 2H	Hunter Unit 2H AWP	Hunter Unit 2H AWP Proj: 17858'
Slot #07	Hunter Unit 2H	Hunter Unit 2H PWB	Hunter Unit 2H PWB Rev-A.0

API: 47-017-06704-0000
 BHI Job #: 8050798
 Rig: Patterson 343
 Duration: 7/18/2016-7/24/2016

RECEIVED
 Office of Oil and Gas
 NOV 30 2017
 WV Department of
 Environmental Protection



User specified Dip: 66.57° Field: 52075 nT
 Magnetic North is 7.67 degrees West of True North (at 7/15/2016)
 Grid North is 0.08 degrees East of True North
 To correct azimuth from True to Grid subtract 0.08 degrees
 To correct azimuth from Magnetic to Grid subtract 7.75 degrees

Azimuth 155.15° with reference 0.00 N, 0.00 E



Actual Wellpath Report

Hunter Unit 2H AWP Proj: 17858'
Page 1 of 16



REFERENCE WELLPATH IDENTIFICATION			
Operator	ANTERO RESOURCES CORPORATION	Slot	Slot #07
Area	Doddridge Co., WV	Well	Hunter Unit 2H
Field	Doddridge	Wellbore	Hunter Unit 2H AWB
Facility	James Webb Pad		

REPORT SETUP INFORMATION			
Projection System	NAD27 / UTM Zone 17 North, US feet	Software System	WellArchitect® 5.0
North Reference	Grid	User	Edsaryar
Scale	0.999601	Report Generated	9/14/2016 at 5:58:39 PM
Convergence at slot	0.09° East	Database/Source file	WA_MPL_EASTERNUS_Defn/Hunter_Unit_2H_AWP_Proj_17858_.xml

WELLPATH LOCATION						
	Local coordinates		Grid coordinates		Geographic coordinates	
	North[ft]	East[ft]	Easting[US ft]	Northing[US ft]	Latitude	Longitude
Slot Location	9.29	17.85	1676288.66	14248833.13	39°14'18.929"N	80°52'23.910"W
Facility Reference Pt			1676270.82	14248823.84	39°14'18.837"N	80°52'24.137"W
Field Reference Pt			0.00	0.00	0°00'00.000"	85°29'19.301"W

WELLPATH DATUM			
Calculation method	Minimum curvature	Patterson 343 (RKB) to Facility Vertical Datum	25.00ft
Horizontal Reference Pt	Slot	Patterson 343 (RKB) to Mean Sea Level	1016.00ft
Vertical Reference Pt	Patterson 343 (RKB)	Patterson 343 (RKB) to Mud Line at Slot (Slot #07)	25.00ft
MD Reference Pt	Patterson 343 (RKB)	Section Origin	N 0.00, E 0.00 ft
Field Vertical Reference	Mean Sea Level	Section Azimuth	155.15°

RECEIVED
Office of Oil and Gas
NOV 30 2017
WV Department of
Environmental Protection



Actual Wellpath Report

Hunter Unit 2H AWP Proj: 17858'

Page 2 of 16



REFERENCE WELLPATH IDENTIFICATION			
Operator	ANTERO RESOURCES CORPORATION		Slot #07
Area	Doddridge Co., WV		Well
Field	Doddridge		Wellbore
Facility	James Webb Pad		Hunter Unit 2H AWB

WELLPATH DATA (381 stations) † = interpolated/extrapolated station																
MD	Inclination	Azimuth	TVD	Vert Sect	North	East	Grid East	Grid North	Latitude	Longitude	Closure Dist	Closure Dir	DLS	Build Rate	Turn Rate	Comments
[ft]	[°]	[°]	[ft]	[ft]	[ft]	[ft]	[US ft]	[US ft]			[ft]	[°]	["/100ft]	["/100ft]	["/100ft]	
0.00	0.00	281.100	0.00	0.00	0.00	0.00	1676288.66	14248833.13	39°14'18.929"N	80°52'23.910"W	0.00	0.000	0.00	0.00	0.00	
25.00	0.00	281.100	25.00	0.00	0.00	0.00	1676288.66	14248833.13	39°14'18.929"N	80°52'23.910"W	0.00	0.000	0.00	0.00	0.00	
112.00	0.700	281.100	112.00	-0.31	0.10	-0.52	1676288.14	14248833.23	39°14'18.930"N	80°52'23.916"W	0.53	281.100	0.80	0.80	-90.69	SDI Keeper <8-3/4"> (100'-6030.01')
137.00	0.690	282.180	137.00	-0.49	0.16	-0.82	1676287.84	14248833.29	39°14'18.930"N	80°52'23.920"W	0.83	281.295	0.07	-0.04	4.32	
162.00	0.670	278.170	161.99	-0.66	0.22	-1.11	1676287.55	14248833.35	39°14'18.931"N	80°52'23.924"W	1.13	281.009	0.21	-0.08	-16.04	
187.00	0.540	275.210	186.99	-0.80	0.25	-1.37	1676287.29	14248833.38	39°14'18.931"N	80°52'23.927"W	1.39	280.222	0.53	-0.52	-11.84	
212.00	0.390	253.150	211.99	-0.87	0.23	-1.57	1676287.09	14248833.36	39°14'18.931"N	80°52'23.930"W	1.59	278.454	0.92	-0.60	-88.24	
237.00	0.390	248.650	236.99	-0.89	0.18	-1.73	1676286.93	14248833.31	39°14'18.930"N	80°52'23.932"W	1.74	275.864	0.12	0.00	-18.00	
262.00	0.450	249.000	261.99	-0.90	0.11	-1.90	1676286.76	14248833.24	39°14'18.930"N	80°52'23.934"W	1.91	273.360	0.24	0.24	1.40	
287.00	0.510	258.470	286.99	-0.93	0.05	-2.10	1676286.56	14248833.18	39°14'18.929"N	80°52'23.936"W	2.10	271.479	0.40	0.24	37.88	
312.00	0.490	253.710	311.99	-0.97	0.00	-2.31	1676286.35	14248833.13	39°14'18.929"N	80°52'23.939"W	2.31	270.051	0.18	-0.08	-19.04	
337.00	0.350	271.770	336.99	-1.02	-0.03	-2.49	1676286.17	14248833.10	39°14'18.928"N	80°52'23.941"W	2.49	269.413	0.76	-0.56	72.24	
362.00	0.380	264.760	361.99	-1.09	-0.03	-2.65	1676286.01	14248833.10	39°14'18.928"N	80°52'23.943"W	2.65	269.335	0.21	0.12	-28.04	
387.00	0.350	253.080	386.99	-1.13	-0.06	-2.81	1676285.85	14248833.07	39°14'18.928"N	80°52'23.945"W	2.81	268.765	0.32	-0.12	-46.72	
412.00	0.410	247.510	411.99	-1.14	-0.12	-2.96	1676285.70	14248833.01	39°14'18.927"N	80°52'23.947"W	2.97	267.739	0.28	0.24	-22.28	
437.00	0.410	251.900	436.99	-1.15	-0.18	-3.13	1676285.53	14248832.95	39°14'18.927"N	80°52'23.950"W	3.14	266.729	0.13	0.00	17.56	
462.00	0.490	252.560	461.99	-1.18	-0.24	-3.32	1676285.34	14248832.89	39°14'18.926"N	80°52'23.952"W	3.33	265.884	0.32	0.32	2.64	
487.00	0.410	264.240	486.98	-1.22	-0.28	-3.51	1676285.15	14248832.85	39°14'18.926"N	80°52'23.954"W	3.52	265.441	0.49	-0.32	46.72	
512.00	0.450	271.490	511.98	-1.29	-0.29	-3.70	1676284.96	14248832.84	39°14'18.926"N	80°52'23.957"W	3.71	265.572	0.27	0.16	29.00	
537.00	0.380	288.160	536.98	-1.39	-0.26	-3.87	1676284.79	14248832.87	39°14'18.926"N	80°52'23.959"W	3.88	266.191	0.56	-0.28	66.68	
562.00	0.620	316.760	561.98	-1.58	-0.13	-4.05	1676284.62	14248833.00	39°14'18.927"N	80°52'23.961"W	4.05	268.110	1.36	0.96	114.40	
587.00	0.830	325.030	586.98	-1.89	0.11	-4.24	1676284.42	14248833.24	39°14'18.930"N	80°52'23.964"W	4.24	271.531	0.94	0.84	33.08	
612.00	0.990	329.910	611.98	-2.28	0.45	-4.45	1676284.21	14248833.58	39°14'18.933"N	80°52'23.966"W	4.48	275.752	0.71	0.64	19.52	
637.00	1.070	333.420	636.97	-2.73	0.84	-4.67	1676284.00	14248833.97	39°14'18.937"N	80°52'23.969"W	4.74	280.255	0.41	0.32	14.04	
662.00	1.190	333.170	661.97	-3.22	1.28	-4.89	1676283.77	14248834.41	39°14'18.941"N	80°52'23.972"W	5.05	284.725	0.48	0.48	-1.00	
687.00	1.180	337.970	686.96	-3.74	1.75	-5.10	1676283.56	14248834.88	39°14'18.946"N	80°52'23.975"W	5.40	288.983	0.40	-0.04	19.20	
712.00	1.510	341.740	711.96	-4.32	2.31	-5.30	1676283.36	14248835.44	39°14'18.951"N	80°52'23.977"W	5.78	293.511	1.37	1.32	15.08	
737.00	1.790	348.360	736.95	-5.03	3.00	-5.48	1676283.18	14248836.13	39°14'18.958"N	80°52'23.979"W	6.25	298.696	1.35	1.12	26.48	
762.00	2.150	349.910	761.93	-5.86	3.85	-5.64	1676283.02	14248836.97	39°14'18.967"N	80°52'23.981"W	6.83	304.268	1.46	1.44	6.20	
787.00	2.630	350.030	786.91	-6.87	4.87	-5.83	1676282.84	14248838.00	39°14'18.977"N	80°52'23.984"W	7.59	309.906	1.92	1.92	0.48	

RECEIVED
Office of Oil and Gas

NOV 30 2017

WV Department of
Environmental Protection



Actual Wellpath Report

Hunter Unit 2H AWP Proj: 17858'
Page 3 of 16



REFERENCE WELLPATH IDENTIFICATION			
Operator	ANTERO RESOURCES CORPORATION	Slot	Slot #07
Area	Doddridge Co., WV	Well	Hunter Unit 2H
Field	Doddridge	Wellbore	Hunter Unit 2H AWB
Facility	James Webb Pad		

WELLPATH DATA (381 stations)																
MD	Inclination	Azimuth	TVD	Vert Sect	North	East	Grid East	Grid North	Latitude	Longitude	Closure Dist	Closure Dir	DLS	Build Rate	Turn Rate	Comments
[ft]	[°]	[°]	[ft]	[ft]	[ft]	[ft]	[US ft]	[US ft]			[ft]	[°]	[°/100ft]	[°/100ft]	[°/100ft]	
812.00	2.920	348.610	811.88	-8.04	6.06	-6.05	1676282.61	14248839.19	39°14'18.989"N	80°52'23.986"W	8.56	315.050	1.19	1.16	-5.68	
837.00	3.640	350.130	836.84	-9.43	7.47	-6.31	1676282.35	14248840.59	39°14'19.002"N	80°52'23.990"W	9.78	319.790	2.90	2.88	6.08	
862.00	4.060	349.040	861.78	-11.05	9.12	-6.62	1676282.05	14248842.24	39°14'19.019"N	80°52'23.994"W	11.27	324.032	1.71	1.68	-4.36	
887.00	4.360	347.630	886.71	-12.84	10.92	-6.99	1676281.67	14248844.04	39°14'19.037"N	80°52'23.998"W	12.96	327.369	1.27	1.20	-5.64	
912.00	4.650	347.030	911.64	-14.76	12.83	-7.42	1676281.24	14248845.96	39°14'19.055"N	80°52'24.004"W	14.82	329.960	1.18	1.16	-2.40	
937.00	4.630	347.770	936.56	-16.74	14.80	-7.86	1676280.80	14248847.93	39°14'19.075"N	80°52'24.009"W	16.76	332.032	0.25	-0.08	2.96	
962.00	4.710	346.550	961.47	-18.73	16.79	-8.31	1676280.35	14248849.91	39°14'19.095"N	80°52'24.015"W	18.73	333.656	0.51	0.32	-4.88	
987.00	4.750	347.290	986.39	-20.75	18.80	-8.78	1676279.88	14248851.92	39°14'19.114"N	80°52'24.021"W	20.75	334.963	0.29	0.16	2.96	
1012.00	4.680	348.350	1011.30	-22.75	20.81	-9.21	1676279.45	14248853.93	39°14'19.134"N	80°52'24.026"W	22.75	336.114	0.45	-0.28	4.24	
1037.00	4.320	346.670	1036.23	-24.67	22.72	-9.64	1676279.03	14248855.84	39°14'19.153"N	80°52'24.032"W	24.68	337.016	1.53	-1.44	-6.72	
1062.00	3.960	347.400	1061.16	-26.43	24.48	-10.04	1676278.62	14248857.80	39°14'19.171"N	80°52'24.037"W	26.46	337.695	1.46	-1.44	2.92	
1087.00	3.550	348.030	1086.11	-28.03	26.08	-10.39	1676278.27	14248859.20	39°14'19.186"N	80°52'24.041"W	28.07	338.276	1.65	-1.64	2.52	
1112.00	3.310	350.800	1111.06	-29.48	27.55	-10.67	1676278.00	14248860.67	39°14'19.201"N	80°52'24.045"W	29.54	338.833	1.17	-0.96	11.08	
1137.00	3.090	352.430	1136.02	-30.82	28.93	-10.87	1676277.79	14248862.05	39°14'19.215"N	80°52'24.047"W	30.90	339.405	0.95	-0.88	6.52	
1162.00	2.930	353.500	1160.99	-32.07	30.23	-11.03	1676277.63	14248863.35	39°14'19.228"N	80°52'24.049"W	32.18	339.952	0.68	-0.64	4.28	
1187.00	2.660	350.260	1185.96	-33.24	31.44	-11.20	1676277.46	14248864.56	39°14'19.239"N	80°52'24.052"W	33.37	340.387	1.25	-1.08	-12.96	
1212.00	2.260	350.430	1210.94	-34.27	32.50	-11.38	1676277.28	14248865.61	39°14'19.250"N	80°52'24.054"W	34.43	340.696	1.60	-1.60	0.68	
1237.00	1.990	353.470	1235.92	-35.16	33.41	-11.51	1676277.15	14248866.53	39°14'19.259"N	80°52'24.055"W	35.34	340.986	1.17	-1.08	12.16	
1262.00	1.760	354.660	1260.90	-35.93	34.23	-11.60	1676277.07	14248867.34	39°14'19.267"N	80°52'24.057"W	36.14	341.279	0.93	-0.92	4.76	
1287.00	1.680	354.380	1285.89	-36.64	34.97	-11.67	1676276.99	14248868.09	39°14'19.274"N	80°52'24.057"W	36.87	341.546	0.32	-0.32	-1.12	
1312.00	1.410	349.590	1310.88	-37.28	35.64	-11.76	1676276.90	14248868.76	39°14'19.281"N	80°52'24.059"W	37.53	341.736	1.20	-1.08	-19.16	
1337.00	1.320	346.040	1335.88	-37.87	36.22	-11.89	1676276.78	14248869.34	39°14'19.287"N	80°52'24.060"W	38.12	341.832	0.49	-0.36	-14.20	
1362.00	1.250	345.110	1360.87	-38.42	36.77	-12.03	1676276.64	14248869.88	39°14'19.292"N	80°52'24.062"W	38.68	341.886	0.29	-0.28	-3.72	
1387.00	1.180	350.420	1385.87	-38.93	37.28	-12.14	1676276.53	14248870.40	39°14'19.297"N	80°52'24.063"W	39.21	341.964	0.53	-0.28	21.24	
1412.00	1.040	344.420	1410.86	-39.41	37.76	-12.24	1676276.42	14248870.87	39°14'19.302"N	80°52'24.065"W	39.69	342.033	0.73	-0.56	-24.00	
1437.00	0.830	334.660	1435.86	-39.81	38.14	-12.38	1676276.28	14248871.25	39°14'19.306"N	80°52'24.066"W	40.10	342.013	1.05	-0.84	-39.04	
1462.00	0.840	337.550	1460.85	-40.17	38.47	-12.53	1676276.14	14248871.59	39°14'19.309"N	80°52'24.068"W	40.46	341.960	0.17	0.04	11.56	
1487.00	0.780	337.850	1485.85	-40.53	38.80	-12.66	1676276.00	14248871.91	39°14'19.312"N	80°52'24.070"W	40.81	341.924	0.24	-0.24	1.20	
1512.00	0.650	328.110	1510.85	-40.84	39.08	-12.80	1676275.86	14248872.19	39°14'19.315"N	80°52'24.072"W	41.12	341.859	0.71	-0.52	-38.96	
1537.00	0.570	336.080	1535.85	-41.10	39.31	-12.93	1676275.74	14248872.42	39°14'19.317"N	80°52'24.073"W	41.38	341.795	0.47	-0.32	31.88	

RECEIVED
Office of Oil and Gas

NOV 30 2017

WV Department of
Environmental Protection



Actual Wellpath Report

Hunter Unit 2H AWP Proj: 17858'
Page 4 of 16



REFERENCE WELLPATH IDENTIFICATION			
Operator	ANTERO RESOURCES CORPORATION	Slot	Slot #07
Area	Doddridge Co., WV	Well	Hunter Unit 2H
Field	Doddridge	Wellbore	Hunter Unit 2H AWB
Facility	James Webb Pad		

WELLPATH DATA (381 stations)																	
MD [ft]	Inclination [°]	Azimuth [°]	TVD [ft]	Vert Sect [ft]	North [ft]	East [ft]	Grid East [US ft]	Grid North [US ft]	Latitude	Longitude	Closure Dist [ft]	Closure Dir [°]	DLS [°/100ft]	Build Rate [°/100ft]	Turn Rate [°/100ft]	Comments	
1562.00	0.570	333.500	1560.85	-41.35	39.54	-13.03	1676275.63	14248872.65	39°14'19.319"N	80°52'24.075"W	41.63	341.754	0.10	0.00	-10.32		
1587.00	0.470	334.930	1585.85	-41.58	39.74	-13.13	1676275.53	14248872.85	39°14'19.322"N	80°52'24.076"W	41.85	341.713	0.40	-0.40	5.72		
1612.00	0.400	338.460	1610.85	-41.77	39.91	-13.21	1676275.46	14248873.03	39°14'19.323"N	80°52'24.077"W	42.04	341.689	0.30	-0.28	14.12		
1637.00	0.270	325.330	1635.85	-41.91	40.04	-13.27	1676275.39	14248873.16	39°14'19.325"N	80°52'24.078"W	42.19	341.660	0.60	-0.52	-52.52		
1662.00	0.240	296.520	1660.85	-42.01	40.11	-13.35	1676275.31	14248873.23	39°14'19.325"N	80°52'24.079"W	42.28	341.587	0.52	-0.12	-115.24		
1687.00	0.270	284.580	1685.84	-42.09	40.15	-13.46	1676275.21	14248873.27	39°14'19.326"N	80°52'24.080"W	42.35	341.470	0.24	0.12	-47.76		
1712.00	0.190	268.980	1710.84	-42.15	40.17	-13.56	1676275.11	14248873.28	39°14'19.326"N	80°52'24.081"W	42.39	341.350	0.40	-0.32	-62.40		
1737.00	0.180	282.160	1735.84	-42.19	40.17	-13.64	1676275.03	14248873.29	39°14'19.326"N	80°52'24.082"W	42.43	341.251	0.17	-0.04	52.72		
1762.00	0.200	275.830	1760.84	-42.23	40.19	-13.72	1676274.95	14248873.30	39°14'19.326"N	80°52'24.083"W	42.46	341.152	0.12	0.08	-25.32		
1787.00	0.170	289.100	1785.84	-42.28	40.20	-13.80	1676274.87	14248873.32	39°14'19.326"N	80°52'24.084"W	42.51	341.060	0.21	-0.12	53.08		
1812.00	0.270	282.530	1810.84	-42.34	40.23	-13.89	1676274.78	14248873.34	39°14'19.326"N	80°52'24.086"W	42.56	340.953	0.41	0.40	-26.28		
1837.00	0.180	283.010	1835.84	-42.40	40.25	-13.98	1676274.68	14248873.36	39°14'19.327"N	80°52'24.087"W	42.61	340.840	0.36	-0.36	1.92		
1862.00	0.130	299.630	1860.84	-42.45	40.27	-14.05	1676274.62	14248873.39	39°14'19.327"N	80°52'24.088"W	42.65	340.771	0.27	-0.20	66.48		
1887.00	0.100	338.310	1885.84	-42.49	40.31	-14.08	1676274.59	14248873.42	39°14'19.327"N	80°52'24.088"W	42.70	340.744	0.33	-0.12	154.72		
1912.00	0.090	275.650	1910.84	-42.52	40.33	-14.11	1676274.56	14248873.44	39°14'19.327"N	80°52'24.088"W	42.73	340.719	0.40	-0.04	-250.64		
1937.00	0.030	229.880	1935.84	-42.53	40.33	-14.13	1676274.53	14248873.44	39°14'19.327"N	80°52'24.089"W	42.73	340.687	0.29	-0.24	-183.08		
1962.00	0.100	261.050	1960.84	-42.54	40.32	-14.16	1676274.51	14248873.43	39°14'19.327"N	80°52'24.089"W	42.73	340.650	0.30	0.28	124.68		
1987.00	0.160	243.560	1985.84	-42.54	40.30	-14.21	1676274.45	14248873.41	39°14'19.327"N	80°52'24.090"W	42.73	340.575	0.29	0.24	-69.96		
2012.00	0.130	243.650	2010.84	-42.54	40.27	-14.27	1676274.40	14248873.39	39°14'19.327"N	80°52'24.090"W	42.73	340.491	0.12	-0.12	0.36		
2037.00	0.150	290.810	2035.84	-42.56	40.27	-14.32	1676274.34	14248873.39	39°14'19.327"N	80°52'24.091"W	42.74	340.420	0.45	0.08	188.64		
2062.00	0.160	247.740	2060.84	-42.59	40.27	-14.39	1676274.28	14248873.38	39°14'19.327"N	80°52'24.092"W	42.76	340.339	0.46	0.04	-172.28		
2087.00	0.170	278.780	2085.84	-42.61	40.26	-14.46	1676274.21	14248873.38	39°14'19.327"N	80°52'24.093"W	42.78	340.249	0.36	0.04	124.16		
2112.00	0.160	263.270	2110.84	-42.64	40.26	-14.53	1676274.14	14248873.38	39°14'19.327"N	80°52'24.094"W	42.81	340.160	0.18	-0.04	-62.04		
2137.00	0.310	249.300	2135.84	-42.66	40.24	-14.63	1676274.04	14248873.35	39°14'19.326"N	80°52'24.095"W	42.81	340.024	0.64	0.60	-55.88		
2162.00	0.200	254.560	2160.84	-42.67	40.20	-14.73	1676273.93	14248873.31	39°14'19.326"N	80°52'24.096"W	42.81	339.875	0.45	-0.44	21.04		
2187.00	0.130	269.760	2185.84	-42.69	40.19	-14.80	1676273.86	14248873.30	39°14'19.326"N	80°52'24.097"W	42.83	339.781	0.33	-0.28	60.80		
2212.00	0.170	248.170	2210.84	-42.70	40.18	-14.86	1676273.80	14248873.29	39°14'19.326"N	80°52'24.098"W	42.84	339.696	0.27	0.16	-86.36		
2237.00	0.110	294.130	2235.84	-42.72	40.17	-14.92	1676273.75	14248873.29	39°14'19.326"N	80°52'24.099"W	42.85	339.624	0.49	-0.24	183.84		
2262.00	0.180	230.990	2260.84	-42.73	40.16	-14.97	1676273.69	14248873.27	39°14'19.326"N	80°52'24.099"W	42.86	339.551	0.65	0.28	-252.56		
2287.00	0.120	269.540	2285.84	-42.73	40.13	-15.03	1676273.64	14248873.25	39°14'19.325"N	80°52'24.100"W	42.85	339.468	0.46	-0.24	154.20		

RECEIVED
Office of Oil and Gas

NOV 30 2017

WV Department of
Environmental Protection



Actual Wellpath Report

Hunter Unit 2H AWP Proj: 17858'

Page 5 of 16



REFERENCE WELLPATH IDENTIFICATION			
Operator	ANTERO RESOURCES CORPORATION	Slot	Slot #07
Area	Doddridge Co., WV	Well	Hunter Unit 2H
Field	Doddridge	Wellbore	Hunter Unit 2H AWB
Facility	James Webb Pad		

WELLPATH DATA (381 stations)																
MD (ft)	Inclination (°)	Azimuth (°)	TVD (ft)	Vert Sect (ft)	North (ft)	East (ft)	Grid East (US ft)	Grid North (US ft)	Latitude	Longitude	Closure Dist (ft)	Closure Dir (°)	DLS (°/100ft)	Build Rate (°/100ft)	Turn Rate (°/100ft)	Comments
2312.00	0.190	303.350	2310.84	-42.78	40.15	-15.09	1676273.58	14248873.27	39°14'19.326"N	80°52'24.101"W	42.90	339.403	0.45	0.28	135.24	
2337.00	0.150	298.080	2335.84	-42.84	40.19	-15.15	1676273.51	14248873.31	39°14'19.326"N	80°52'24.102"W	42.95	339.341	0.17	-0.16	-21.08	
2362.00	0.210	258.360	2360.84	-42.88	40.20	-15.23	1676273.44	14248873.31	39°14'19.326"N	80°52'24.103"W	42.99	339.252	0.54	0.24	-158.88	
2387.00	0.180	276.250	2385.84	-42.91	40.19	-15.31	1676273.35	14248873.31	39°14'19.326"N	80°52'24.104"W	43.01	339.146	0.27	-0.12	71.56	
2412.00	0.060	286.480	2410.84	-42.94	40.20	-15.36	1676273.30	14248873.32	39°14'19.326"N	80°52'24.104"W	43.04	339.085	0.49	-0.48	40.92	
2437.00	0.120	319.460	2435.84	-42.97	40.22	-15.39	1676273.27	14248873.34	39°14'19.326"N	80°52'24.105"W	43.07	339.060	0.31	0.24	131.92	
2462.00	0.260	291.310	2460.84	-43.04	40.27	-15.46	1676273.20	14248873.38	39°14'19.327"N	80°52'24.106"W	43.13	338.992	0.66	0.56	-112.60	
2487.00	0.240	253.210	2485.84	-43.08	40.27	-15.57	1676273.10	14248873.38	39°14'19.327"N	80°52'24.107"W	43.17	338.867	0.66	-0.08	-152.40	
2512.01	0.100	263.510	2510.85	-43.10	40.25	-15.64	1676273.03	14248873.37	39°14'19.327"N	80°52'24.108"W	43.18	338.770	0.57	-0.56	41.18	
2537.01	0.040	20.530	2535.85	-43.11	40.26	-15.66	1676273.01	14248873.37	39°14'19.327"N	80°52'24.108"W	43.20	338.750	0.49	-0.24	468.08	
2562.01	0.040	81.880	2560.85	-43.11	40.27	-15.64	1676273.02	14248873.38	39°14'19.327"N	80°52'24.108"W	43.20	338.769	0.16	0.00	245.40	
2587.01	0.090	52.160	2585.85	-43.12	40.28	-15.62	1676273.05	14248873.40	39°14'19.327"N	80°52'24.108"W	43.20	338.805	0.23	0.20	-118.88	
2612.01	0.040	101.470	2610.85	-43.12	40.29	-15.60	1676273.07	14248873.41	39°14'19.327"N	80°52'24.107"W	43.21	338.839	0.28	-0.20	197.24	
2637.01	0.110	4.930	2635.85	-43.13	40.31	-15.59	1676273.08	14248873.43	39°14'19.327"N	80°52'24.107"W	43.22	338.863	0.49	0.28	-386.16	
2662.01	0.200	351.220	2660.85	-43.19	40.38	-15.59	1676273.08	14248873.50	39°14'19.328"N	80°52'24.107"W	43.29	338.890	0.39	0.36	-54.84	
2687.01	0.410	2.470	2685.85	-43.32	40.51	-15.59	1676273.07	14248873.63	39°14'19.329"N	80°52'24.107"W	43.41	338.949	0.87	0.84	45.00	
2712.01	1.740	23.680	2710.85	-43.65	40.95	-15.44	1676273.23	14248874.06	39°14'19.334"N	80°52'24.105"W	43.76	339.346	5.46	5.32	84.84	
2737.01	2.940	17.570	2735.82	-44.37	41.91	-15.09	1676273.58	14248875.02	39°14'19.343"N	80°52'24.101"W	44.54	340.197	4.90	4.80	-24.44	
2762.01	4.500	21.260	2760.77	-45.52	43.43	-14.54	1676274.12	14248876.55	39°14'19.358"N	80°52'24.094"W	45.80	341.490	6.31	6.24	14.76	
2787.01	5.210	22.830	2785.68	-46.97	45.40	-13.75	1676274.92	14248878.51	39°14'19.377"N	80°52'24.084"W	47.43	343.154	2.89	2.84	6.28	
2812.01	6.160	26.880	2810.56	-48.56	47.64	-12.70	1676275.97	14248880.75	39°14'19.400"N	80°52'24.070"W	49.30	345.074	4.12	3.80	16.20	
2837.01	7.000	33.250	2835.39	-50.20	50.11	-11.26	1676277.41	14248883.22	39°14'19.424"N	80°52'24.052"W	51.36	347.338	4.45	3.36	25.48	
2862.01	7.700	39.100	2860.19	-51.74	52.68	-9.37	1676279.30	14248885.79	39°14'19.449"N	80°52'24.028"W	53.51	349.920	4.10	2.80	23.40	
2887.01	8.370	43.270	2884.94	-53.15	55.31	-7.06	1676281.60	14248888.41	39°14'19.475"N	80°52'23.998"W	55.76	352.723	3.55	2.68	16.68	
2912.01	8.860	45.300	2909.66	-54.49	57.99	-4.45	1676284.22	14248891.09	39°14'19.502"N	80°52'23.965"W	58.16	355.615	2.31	1.96	8.12	
2937.01	9.610	46.460	2934.34	-55.81	60.78	-1.57	1676287.10	14248893.88	39°14'19.529"N	80°52'23.929"W	60.80	358.525	3.09	3.00	4.64	
2962.01	10.020	46.530	2958.97	-57.17	63.71	1.53	1676290.19	14248896.82	39°14'19.558"N	80°52'23.889"W	63.73	1.372	1.64	1.64	0.28	
2987.01	11.050	48.690	2983.55	-58.54	66.79	4.90	1676293.56	14248899.89	39°14'19.589"N	80°52'23.846"W	66.97	4.200	4.41	4.12	8.64	
3012.01	11.470	50.660	3008.07	-59.85	69.95	8.63	1676297.28	14248903.05	39°14'19.620"N	80°52'23.799"W	70.48	7.031	2.28	1.68	7.88	
3037.01	12.190	52.460	3032.54	-61.05	73.13	12.64	1676301.30	14248906.23	39°14'19.651"N	80°52'23.748"W	74.22	9.807	3.24	2.88	7.20	

RECEIVED
Office of Oil and Gas

NOV 30 2017

WV Department of
Environmental Protection



Actual Wellpath Report

Hunter Unit 2H AWP Proj: 17858'
Page 6 of 16



REFERENCE WELLPATH IDENTIFICATION			
Operator	ANTERO RESOURCES CORPORATION	Slot	Slot #07
Area	Doddridge Co., WV	Well	Hunter Unit 2H
Field	Doddridge	Wellbore	Hunter Unit 2H AWB
Facility	James Webb Pad		

WELLPATH DATA (381 stations)																
MD	Inclination	Azimuth	TVD	Vert Sect	North	East	Grid East	Grid North	Latitude	Longitude	Closure Dist	Closure Dir	DLS	Build Rate	Turn Rate	Comments
[ft]	[°]	[°]	[ft]	[ft]	[ft]	[ft]	[US ft]	[US ft]			[ft]	[°]	["/100ft]	["/100ft]	["/100ft]	
3062.01	12.870	54.660	3056.94	-62.13	76.35	17.01	1676305.66	14248909.45	39°14'19.683"N	80°52'23.692"W	78.22	12.557	3.32	2.72	8.80	
3087.01	13.690	57.170	3081.27	-63.05	79.56	21.76	1676310.41	14248912.66	39°14'19.715"N	80°52'23.632"W	82.49	15.298	4.01	3.28	10.04	
3112.01	14.080	58.320	3105.54	-63.82	82.76	26.84	1676315.49	14248915.86	39°14'19.746"N	80°52'23.567"W	87.01	17.965	1.91	1.56	4.60	
3137.01	14.640	60.250	3129.76	-64.46	85.93	32.17	1676320.81	14248919.02	39°14'19.777"N	80°52'23.499"W	91.75	20.523	2.95	2.24	7.72	
3162.01	15.320	61.520	3153.91	-64.93	89.07	37.81	1676326.46	14248922.17	39°14'19.808"N	80°52'23.428"W	96.77	23.003	3.02	2.72	5.08	
3187.01	15.870	61.690	3177.99	-65.35	92.27	43.73	1676332.37	14248925.36	39°14'19.840"N	80°52'23.352"W	102.10	25.356	2.21	2.20	0.68	
3212.01	15.970	61.820	3202.03	-65.76	95.51	49.77	1676338.41	14248928.60	39°14'19.872"N	80°52'23.276"W	107.70	27.522	0.42	0.40	0.52	
3237.01	16.260	61.930	3226.05	-66.15	98.78	55.89	1676344.52	14248931.87	39°14'19.904"N	80°52'23.198"W	113.50	29.499	1.17	1.16	0.44	
3262.01	16.920	62.250	3250.01	-66.53	102.12	62.19	1676350.83	14248935.21	39°14'19.937"N	80°52'23.117"W	119.57	31.342	2.67	2.64	1.28	
3287.01	16.960	63.160	3273.92	-66.84	105.47	68.67	1676357.30	14248938.55	39°14'19.970"N	80°52'23.035"W	125.85	33.068	1.07	0.16	3.64	
3312.01	17.220	64.720	3297.82	-67.00	108.69	75.27	1676363.90	14248941.78	39°14'20.002"N	80°52'22.951"W	132.21	34.702	2.11	1.04	6.24	
3337.01	17.480	66.270	3321.68	-66.95	111.78	82.05	1676370.68	14248944.87	39°14'20.032"N	80°52'22.865"W	138.66	36.279	2.12	1.04	6.20	
3362.01	18.280	67.170	3345.48	-66.74	114.82	89.10	1676377.73	14248947.90	39°14'20.062"N	80°52'22.775"W	145.33	37.813	3.39	3.20	3.60	
3387.01	19.330	67.370	3369.14	-66.44	117.93	96.53	1676385.16	14248951.01	39°14'20.093"N	80°52'22.681"W	152.40	39.303	4.21	4.20	0.80	
3412.01	19.660	67.410	3392.71	-66.12	121.14	104.24	1676392.85	14248954.22	39°14'20.124"N	80°52'22.583"W	159.81	40.712	1.32	1.32	0.16	
3437.01	20.690	66.570	3416.17	-65.84	124.51	112.17	1676400.79	14248957.59	39°14'20.158"N	80°52'22.482"W	167.58	42.016	4.28	4.12	-3.36	
3462.01	21.600	66.200	3439.49	-65.65	128.12	120.43	1676409.05	14248961.20	39°14'20.193"N	80°52'22.377"W	175.84	43.229	3.68	3.64	-1.48	
3487.01	22.030	66.300	3462.70	-65.47	131.86	128.94	1676417.55	14248964.94	39°14'20.230"N	80°52'22.269"W	184.43	44.357	1.73	1.72	0.40	
3512.01	21.960	66.110	3485.88	-65.30	135.64	137.50	1676426.11	14248968.72	39°14'20.267"N	80°52'22.160"W	193.15	45.391	0.40	-0.28	-0.76	
3537.01	20.950	65.030	3509.15	-65.23	139.42	145.83	1676434.43	14248972.49	39°14'20.305"N	80°52'22.054"W	201.75	46.287	4.34	-4.04	-4.32	
3562.01	20.760	63.520	3532.51	-65.36	143.28	153.85	1676442.45	14248976.36	39°14'20.343"N	80°52'21.952"W	210.24	47.037	2.28	-0.76	-6.04	
3587.01	20.710	62.920	3555.89	-65.66	147.27	161.75	1676450.35	14248980.34	39°14'20.382"N	80°52'21.851"W	218.75	47.683	0.87	-0.20	-2.40	
3612.01	21.010	62.340	3579.25	-66.05	151.36	169.66	1676458.25	14248984.43	39°14'20.422"N	80°52'21.751"W	227.36	48.261	1.46	1.20	-2.32	
3637.01	21.240	61.850	3602.57	-66.53	155.58	177.62	1676466.21	14248988.65	39°14'20.464"N	80°52'21.650"W	236.12	48.784	1.16	0.92	-1.96	
3662.01	20.970	62.070	3625.89	-67.03	159.81	185.56	1676474.15	14248992.88	39°14'20.506"N	80°52'21.548"W	244.89	49.264	1.13	-1.08	0.88	
3687.01	22.290	62.970	3649.13	-67.45	164.06	193.74	1676482.32	14248997.13	39°14'20.547"N	80°52'21.444"W	253.87	49.741	5.44	5.28	3.60	
3712.01	22.100	65.560	3672.28	-67.60	168.16	202.24	1676490.82	14249001.23	39°14'20.588"N	80°52'21.336"W	263.02	50.257	3.99	-0.76	10.36	
3737.01	23.070	67.290	3695.36	-67.38	172.00	211.04	1676499.62	14249005.06	39°14'20.626"N	80°52'21.224"W	272.26	50.820	4.70	3.88	6.92	
3762.01	22.550	69.260	3718.41	-66.86	175.59	220.05	1676508.62	14249008.65	39°14'20.661"N	80°52'21.110"W	281.52	51.411	3.70	-2.08	7.88	
3787.01	22.940	69.680	3741.47	-66.13	178.98	229.10	1676517.67	14249012.04	39°14'20.694"N	80°52'20.995"W	290.72	52.002	1.69	1.56	1.68	

RECEIVED
Office of Oil and Gas

NOV 30 2017

WV Department of
Environmental Protection



Actual Wellpath Report

Hunter Unit 2H AWP Proj: 17858'
Page 7 of 16



REFERENCE WELLPATH IDENTIFICATION			
Operator	ANTERO RESOURCES CORPORATION	Slot	Slot #07
Area	Doddridge Co., WV	Well	Hunter Unit 2H
Field	Doddridge	Wellbore	Hunter Unit 2H AWB
Facility	James Webb Pad		

WELLPATH DATA (381 stations)																
MD	Inclination	Azimuth	TVD	Vert Sect	North	East	Grid East	Grid North	Latitude	Longitude	Closure Dist	Closure Dir	DLS	Build Rate	Turn Rate	Comments
[ft]	[°]	[°]	[ft]	[ft]	[ft]	[ft]	[US ft]	[US ft]			[ft]	[°]	["/100ft]	["/100ft]	["/100ft]	
3812.01	23.510	69.680	3764.44	-65.35	182.40	238.34	1676526.91	14249015.46	39°14'20.728"N	80°52'20.877"W	300.13	52.574	2.28	2.28	0.00	
3837.01	24.110	69.800	3787.31	-64.54	185.90	247.81	1676536.37	14249018.95	39°14'20.762"N	80°52'20.757"W	309.79	53.124	2.41	2.40	0.48	
3862.01	24.110	69.990	3810.13	-63.70	189.41	257.40	1676545.96	14249022.46	39°14'20.797"N	80°52'20.635"W	319.58	53.653	0.31	0.00	0.76	
3887.01	24.490	69.990	3832.92	-62.83	192.93	267.07	1676555.62	14249025.98	39°14'20.832"N	80°52'20.512"W	329.46	54.156	1.52	1.52	0.00	
3912.01	23.740	69.620	3855.73	-62.00	196.45	276.65	1676565.20	14249029.50	39°14'20.866"N	80°52'20.390"W	339.31	54.621	3.06	-3.00	-1.48	
3937.01	23.560	69.330	3878.63	-61.24	199.97	286.05	1676574.59	14249033.02	39°14'20.901"N	80°52'20.271"W	349.01	55.043	0.86	-0.72	-1.16	
3962.01	23.810	68.830	3901.53	-60.56	203.55	295.43	1676583.97	14249036.60	39°14'20.936"N	80°52'20.151"W	358.76	55.432	1.28	1.00	-2.00	
3987.01	23.200	68.250	3924.45	-59.97	207.20	304.71	1676593.24	14249040.25	39°14'20.972"N	80°52'20.033"W	368.48	55.784	2.61	-2.44	-2.32	
4012.01	22.920	67.560	3947.46	-59.50	210.88	313.78	1676602.31	14249043.93	39°14'21.009"N	80°52'19.918"W	378.06	56.096	1.56	-1.12	-2.76	
4037.01	23.110	67.550	3970.47	-59.09	214.62	322.81	1676611.34	14249047.66	39°14'21.045"N	80°52'19.803"W	387.64	56.383	0.76	0.76	-0.04	
4062.01	23.540	66.550	3993.42	-58.76	218.48	331.93	1676620.45	14249051.52	39°14'21.083"N	80°52'19.687"W	397.38	56.647	2.34	1.72	-4.00	
4087.01	23.560	66.090	4016.34	-58.55	222.49	341.08	1676629.60	14249055.53	39°14'21.123"N	80°52'19.571"W	407.23	56.883	0.74	0.08	-1.84	
4112.01	23.600	65.650	4039.25	-58.43	226.58	350.20	1676638.72	14249059.62	39°14'21.163"N	80°52'19.455"W	417.11	57.098	0.72	0.16	-1.76	
4137.01	23.090	65.430	4062.21	-58.36	230.68	359.22	1676647.74	14249063.72	39°14'21.204"N	80°52'19.340"W	426.91	57.293	2.07	-2.04	-0.88	
4162.01	21.910	64.930	4085.30	-58.35	234.69	367.90	1676656.42	14249067.73	39°14'21.243"N	80°52'19.230"W	436.39	57.465	4.78	-4.72	-2.00	
4187.01	21.850	64.600	4108.50	-58.42	238.67	376.33	1676664.84	14249071.70	39°14'21.282"N	80°52'19.123"W	445.63	57.618	0.55	-0.24	-1.32	
4212.01	22.170	64.520	4131.68	-58.51	242.69	384.79	1676673.30	14249075.72	39°14'21.322"N	80°52'19.015"W	454.93	57.760	1.29	1.28	-0.32	
4237.01	22.580	64.460	4154.80	-58.62	246.79	393.38	1676681.88	14249079.82	39°14'21.362"N	80°52'18.906"W	464.38	57.898	1.64	1.64	-0.24	
4262.01	21.380	64.210	4177.98	-58.76	250.84	401.81	1676690.31	14249083.87	39°14'21.402"N	80°52'18.798"W	473.68	58.025	4.81	-4.80	-1.00	
4287.01	21.530	64.320	4201.25	-58.90	254.81	410.05	1676698.55	14249087.84	39°14'21.441"N	80°52'18.694"W	482.77	58.143	0.62	0.60	0.44	
4312.01	22.060	64.200	4224.46	-59.04	258.84	418.41	1676706.91	14249091.87	39°14'21.481"N	80°52'18.587"W	492.00	58.258	2.13	2.12	-0.48	
4337.01	22.690	64.180	4247.58	-59.20	262.99	426.98	1676715.47	14249096.01	39°14'21.522"N	80°52'18.478"W	501.47	58.370	2.52	2.52	-0.08	
4362.01	22.170	64.170	4270.69	-59.36	267.14	435.57	1676724.05	14249100.16	39°14'21.563"N	80°52'18.369"W	510.96	58.478	2.08	-2.08	-0.04	
4387.01	22.630	64.200	4293.80	-59.52	271.29	444.14	1676732.62	14249104.31	39°14'21.604"N	80°52'18.260"W	520.44	58.583	1.84	1.84	0.12	
4412.01	23.690	64.340	4316.79	-59.67	275.56	453.00	1676741.48	14249108.58	39°14'21.646"N	80°52'18.147"W	530.23	58.688	4.25	4.24	0.56	
4437.01	23.500	64.490	4339.70	-59.80	279.88	462.03	1676750.50	14249112.90	39°14'21.688"N	80°52'18.033"W	540.19	58.794	0.80	-0.76	0.60	
4462.01	23.770	64.440	4362.60	-59.92	284.20	471.07	1676759.54	14249117.22	39°14'21.731"N	80°52'17.918"W	550.16	58.897	1.08	1.08	-0.20	
4487.01	24.610	64.070	4385.40	-60.08	288.65	480.30	1676768.76	14249121.66	39°14'21.775"N	80°52'17.800"W	560.36	58.995	3.41	3.36	-1.48	
4512.01	25.410	64.020	4408.06	-60.29	293.28	489.80	1676778.26	14249126.29	39°14'21.820"N	80°52'17.679"W	570.89	59.088	3.20	3.20	-0.20	
4537.01	25.500	63.420	4430.63	-60.56	298.03	499.43	1676787.89	14249131.04	39°14'21.867"N	80°52'17.557"W	581.60	59.174	1.09	0.36	-2.40	

RECEIVED
Office of Oil and Gas

NOV 30 2017

WV Department of
Environmental Protection



Actual Wellpath Report

Hunter Unit 2H AWP Proj: 17858'

Page 8 of 16



REFERENCE WELLPATH IDENTIFICATION			
Operator	ANTERO RESOURCES CORPORATION	Slot	Slot #07
Area	Doddridge Co., WV	Well	Hunter Unit 2H
Field	Doddridge	Wellbore	Hunter Unit 2H AWB
Facility	James Webb Pad		

WELLPATH DATA (381 stations)																
MD [ft]	Inclination [°]	Azimuth [°]	TVD [ft]	Vert Sect [ft]	North [ft]	East [ft]	Grid East [US ft]	Grid North [US ft]	Latitude	Longitude	Closure Dist [ft]	Closure Dir [°]	DLS ["/100ft]	Build Rate ["/100ft]	Turn Rate ["/100ft]	Comments
4562.01	25.760	63.250	4453.17	-60.90	302.89	509.10	1676797.55	14249135.90	39°14'21.915"N	80°52'17.434"W	592.39	59.250	1.08	1.04	-0.68	
4587.01	25.950	62.800	4475.67	-61.30	307.83	518.81	1676807.27	14249140.84	39°14'21.964"N	80°52'17.310"W	603.26	59.318	1.09	0.76	-1.80	
4612.01	26.210	62.140	4498.13	-61.82	312.91	528.56	1676817.01	14249145.92	39°14'22.014"N	80°52'17.186"W	614.24	59.374	1.56	1.04	-2.64	
4637.01	25.440	61.400	4520.63	-62.46	318.06	538.15	1676826.60	14249151.07	39°14'22.065"N	80°52'17.064"W	625.12	59.416	3.34	-3.08	-2.96	
4662.01	25.160	60.860	4543.23	-63.21	323.22	547.51	1676835.95	14249156.22	39°14'22.116"N	80°52'16.945"W	635.80	59.445	1.45	-1.12	-2.16	
4687.01	25.910	60.870	4565.79	-64.01	328.47	556.92	1676845.36	14249161.47	39°14'22.167"N	80°52'16.826"W	646.57	59.468	3.00	3.00	0.04	
4712.01	26.320	60.760	4588.24	-64.84	333.83	566.53	1676854.96	14249166.83	39°14'22.220"N	80°52'16.703"W	657.57	59.491	1.65	1.64	-0.44	
4737.01	25.530	60.620	4610.72	-65.69	339.18	576.06	1676864.49	14249172.18	39°14'22.273"N	80°52'16.582"W	668.50	59.511	3.17	-3.16	-0.56	
4762.01	25.850	60.860	4633.25	-66.53	344.48	585.52	1676873.94	14249177.47	39°14'22.325"N	80°52'16.462"W	679.34	59.530	1.35	1.28	0.96	
4787.01	26.170	61.270	4655.72	-67.31	349.78	595.11	1676883.53	14249182.77	39°14'22.377"N	80°52'16.340"W	690.29	59.555	1.47	1.28	1.64	
4812.01	26.080	61.670	4678.16	-68.01	355.04	604.78	1676893.20	14249188.03	39°14'22.429"N	80°52'16.217"W	701.30	59.585	0.79	-0.36	1.60	
4837.01	25.200	62.100	4700.70	-68.63	360.14	614.32	1676902.74	14249193.13	39°14'22.480"N	80°52'16.096"W	712.11	59.619	3.60	-3.52	1.72	
4862.01	25.110	62.810	4723.33	-69.13	365.06	623.75	1676912.16	14249198.04	39°14'22.528"N	80°52'15.976"W	722.72	59.661	1.26	-0.36	2.84	
4887.01	24.960	63.460	4745.98	-69.50	369.84	633.18	1676921.59	14249202.82	39°14'22.575"N	80°52'15.856"W	733.28	59.711	1.25	-0.60	2.60	
4912.01	24.130	63.830	4768.72	-69.78	374.45	642.49	1676930.89	14249207.43	39°14'22.621"N	80°52'15.737"W	743.64	59.766	3.38	-3.32	1.48	
4937.01	23.630	64.120	4791.58	-69.98	378.89	651.58	1676939.98	14249211.87	39°14'22.664"N	80°52'15.622"W	753.73	59.822	2.05	-2.00	1.16	
4962.01	24.080	64.780	4814.45	-70.11	383.25	660.70	1676949.10	14249216.22	39°14'22.707"N	80°52'15.506"W	763.81	59.884	2.09	1.80	2.64	
4987.01	23.300	65.150	4837.34	-70.14	387.50	669.80	1676958.20	14249220.47	39°14'22.749"N	80°52'15.390"W	773.82	59.950	3.18	-3.12	1.48	
5012.01	23.680	65.480	4860.27	-70.11	391.66	678.86	1676967.25	14249224.63	39°14'22.790"N	80°52'15.275"W	783.74	60.018	1.61	1.52	1.32	
5037.01	23.610	65.350	4883.17	-70.06	395.83	687.98	1676976.36	14249228.80	39°14'22.831"N	80°52'15.159"W	793.72	60.086	0.35	-0.28	-0.52	
5062.01	22.860	65.290	4906.14	-70.03	399.95	696.94	1676985.32	14249232.92	39°14'22.872"N	80°52'15.045"W	803.54	60.150	3.00	-3.00	-0.24	
5087.01	22.510	65.250	4929.21	-70.01	403.98	705.70	1676994.07	14249236.95	39°14'22.912"N	80°52'14.934"W	813.15	60.211	1.40	-1.40	-0.16	
5112.01	23.290	65.090	4952.24	-70.01	408.07	714.52	1677002.90	14249241.03	39°14'22.952"N	80°52'14.821"W	822.84	60.269	3.13	3.12	-0.64	
5137.01	23.350	65.200	4975.19	-70.01	412.23	723.50	1677011.87	14249245.19	39°14'22.993"N	80°52'14.707"W	832.70	60.327	0.30	0.24	0.44	
5162.01	23.270	65.170	4998.15	-70.01	416.38	732.48	1677020.85	14249249.34	39°14'23.034"N	80°52'14.593"W	842.56	60.384	0.32	-0.32	-0.12	
5187.01	23.510	65.170	5021.10	-70.00	420.55	741.49	1677029.85	14249253.51	39°14'23.075"N	80°52'14.478"W	852.45	60.440	0.96	0.96	0.00	
5212.01	23.510	65.420	5044.02	-69.98	424.72	750.55	1677038.91	14249257.68	39°14'23.116"N	80°52'14.363"W	862.39	60.496	0.40	0.00	1.00	
5237.01	23.160	65.160	5066.98	-69.95	428.66	759.55	1677047.90	14249261.81	39°14'23.157"N	80°52'14.249"W	872.25	60.550	1.46	-1.40	-1.04	
5262.01	23.180	65.190	5089.96	-69.95	432.98	768.47	1677056.83	14249265.94	39°14'23.197"N	80°52'14.135"W	882.06	60.602	0.09	0.08	0.12	
5287.01	23.790	65.160	5112.89	-69.94	437.17	777.52	1677065.87	14249270.12	39°14'23.239"N	80°52'14.020"W	891.99	60.653	2.44	2.44	-0.12	

RECEIVED
Office of Oil and Gas

NOV 30 2017

WV Department of
Environmental Protection



Actual Wellpath Report

Hunter Unit 2H AWP Proj: 17858'

Page 9 of 16



REFERENCE WELLPATH IDENTIFICATION			
Operator	ANTERO RESOURCES CORPORATION	Slot	Slot #07
Area	Doddridge Co., WV	Well	Hunter Unit 2H
Field	Doddridge	Wellbore	Hunter Unit 2H AWB
Facility	James Webb Pad		

WELLPATH DATA (381 stations)																
MD	Inclination	Azimuth	TVD	Vert Sect	North	East	Grid East	Grid North	Latitude	Longitude	Closure Dist	Closure Dir	DLS	Build Rate	Turn Rate	Comments
[ft]	[°]	[°]	[ft]	[ft]	[ft]	[ft]	[US ft]	[US ft]			[ft]	[°]	[°/100ft]	[°/100ft]	[°/100ft]	
5312.01	24.330	65.050	5135.72	-69.95	441.46	786.76	1677075.11	14249274.41	39°14'23.281"N	80°52'13.903"W	902.15	60.703	2.17	2.16	-0.44	
5337.01	24.110	64.640	5158.52	-70.01	445.82	796.04	1677084.39	14249278.77	39°14'23.324"N	80°52'13.784"W	912.38	60.749	1.11	-0.88	-1.64	
5362.01	24.210	64.710	5181.33	-70.09	450.19	805.29	1677093.63	14249283.14	39°14'23.367"N	80°52'13.667"W	922.59	60.793	0.42	0.40	0.28	
5387.01	24.250	64.620	5204.13	-70.18	454.58	814.57	1677102.90	14249287.53	39°14'23.410"N	80°52'13.549"W	932.83	60.835	0.22	0.16	-0.36	
5412.01	24.770	64.450	5226.87	-70.29	459.04	823.93	1677112.26	14249291.99	39°14'23.454"N	80°52'13.430"W	943.18	60.876	2.10	2.08	-0.68	
5437.01	24.800	64.680	5249.57	-70.40	463.55	833.40	1677121.72	14249296.49	39°14'23.498"N	80°52'13.309"W	953.64	60.917	0.40	0.12	0.92	
5462.01	24.180	64.980	5272.32	-70.46	467.95	842.77	1677131.10	14249300.90	39°14'23.542"N	80°52'13.190"W	963.98	60.959	2.53	-2.48	1.20	
5487.01	24.030	65.050	5295.14	-70.48	472.27	852.03	1677140.35	14249305.21	39°14'23.584"N	80°52'13.072"W	974.16	61.001	0.61	-0.60	0.28	
5512.01	23.940	65.040	5317.98	-70.50	476.55	861.24	1677149.56	14249309.49	39°14'23.627"N	80°52'12.955"W	984.30	61.043	0.36	-0.36	-0.04	
5537.01	24.170	65.140	5340.81	-70.51	480.85	870.49	1677158.80	14249313.78	39°14'23.669"N	80°52'12.838"W	994.46	61.084	0.93	0.92	0.40	
5562.01	24.150	64.940	5363.62	-70.53	485.16	879.76	1677168.07	14249318.10	39°14'23.711"N	80°52'12.720"W	1004.67	61.125	0.34	-0.08	-0.80	
5587.01	23.850	64.690	5386.46	-70.59	489.49	888.96	1677177.27	14249322.42	39°14'23.754"N	80°52'12.603"W	1014.82	61.161	1.27	-1.20	-1.00	
5612.01	23.980	64.680	5409.31	-70.67	493.82	898.12	1677186.42	14249326.76	39°14'23.797"N	80°52'12.486"W	1024.93	61.196	0.52	0.52	-0.04	
5637.01	23.630	64.250	5432.19	-70.79	498.17	907.23	1677195.53	14249331.10	39°14'23.840"N	80°52'12.370"W	1035.01	61.228	1.56	-1.40	-1.72	
5662.01	23.400	64.620	5455.11	-70.91	502.48	916.23	1677204.52	14249335.41	39°14'23.882"N	80°52'12.256"W	1044.97	61.259	1.09	-0.92	1.48	
5687.01	23.470	64.900	5478.05	-70.98	506.72	925.22	1677213.51	14249339.64	39°14'23.924"N	80°52'12.142"W	1054.89	61.292	0.53	0.28	1.12	
5712.01	23.260	65.190	5501.00	-71.00	510.90	934.21	1677222.50	14249343.83	39°14'23.965"N	80°52'12.027"W	1064.79	61.327	0.96	-0.84	1.16	
5737.01	23.100	65.390	5523.98	-70.98	515.01	943.15	1677231.43	14249347.94	39°14'24.006"N	80°52'11.914"W	1074.60	61.363	0.71	-0.64	0.80	
5762.01	22.760	65.200	5547.00	-70.95	519.08	952.00	1677240.28	14249352.01	39°14'24.046"N	80°52'11.801"W	1084.32	61.398	1.39	-1.36	-0.76	
5787.01	22.520	65.400	5570.08	-70.93	523.11	960.74	1677249.02	14249356.03	39°14'24.085"N	80°52'11.690"W	1093.92	61.433	1.01	-0.96	0.80	
5812.01	22.560	65.260	5593.17	-70.90	527.11	969.45	1677257.72	14249360.03	39°14'24.125"N	80°52'11.579"W	1103.48	61.466	0.27	0.16	-0.56	
5837.01	21.910	64.640	5616.31	-70.93	531.11	978.02	1677266.29	14249364.03	39°14'24.164"N	80°52'11.470"W	1112.93	61.496	2.76	-2.60	-2.48	
5862.01	21.970	64.380	5639.50	-71.03	535.13	986.45	1677274.72	14249368.05	39°14'24.204"N	80°52'11.363"W	1122.25	61.521	0.46	0.24	-1.04	
5887.01	22.250	63.560	5662.66	-71.23	539.26	994.91	1677283.17	14249372.17	39°14'24.245"N	80°52'11.255"W	1131.65	61.541	1.67	1.12	-3.28	
5912.01	22.120	63.030	5685.81	-71.53	543.50	1003.34	1677291.60	14249376.42	39°14'24.286"N	80°52'11.148"W	1141.09	61.556	0.95	-0.52	-2.12	
5937.01	21.690	62.220	5709.00	-71.94	547.79	1011.62	1677299.88	14249380.70	39°14'24.329"N	80°52'11.043"W	1150.41	61.565	2.10	-1.72	-3.24	
5962.01	21.690	61.480	5732.23	-72.47	552.15	1019.77	1677308.02	14249385.06	39°14'24.372"N	80°52'10.939"W	1159.65	61.567	1.09	0.00	-2.96	
5987.01	22.150	60.530	5755.43	-73.15	556.67	1027.93	1677316.18	14249389.58	39°14'24.416"N	80°52'10.835"W	1168.99	61.562	2.32	1.84	-3.80	
6012.01	22.420	59.850	5778.56	-73.97	561.39	1036.16	1677324.40	14249394.29	39°14'24.463"N	80°52'10.731"W	1178.46	61.551	1.49	1.08	-2.72	
6037.01	22.480	58.860	5801.67	-74.93	566.25	1044.37	1677332.61	14249399.16	39°14'24.511"N	80°52'10.626"W	1188.00	61.534	1.53	0.24	-3.96	

RECEIVED
Office of Oil and Gas

NOV 30 2017

WV Department of
Environmental Protection



Actual Wellpath Report

Hunter Unit 2H AWP Proj: 17858'

Page 10 of 16



REFERENCE WELLPATH IDENTIFICATION			
Operator	ANTERO RESOURCES CORPORATION	Slot	Slot #07
Area	Doddridge Co., WV	Well	Hunter Unit 2H
Field	Doddridge	Wellbore	Hunter Unit 2H AWB
Facility	James Webb Pad		

WELLPATH DATA (381 stations) † = interpolated/extrapolated station																
MD [ft]	Inclination [°]	Azimuth [°]	TVD [ft]	Vert Sect [ft]	North [ft]	East [ft]	Grid East [US ft]	Grid North [US ft]	Latitude	Longitude	Closure Dist [ft]	Closure Dir [°]	DLS ["/100ft]	Build Rate ["/100ft]	Turn Rate ["/100ft]	Comments
6042.01	22.490	58.670	5806.29	-75.15	567.24	1046.00	1677334.25	14249400.15	39°14'24.520"N	80°52'10.605"W	1189.91	61.529	1.47	0.20	-3.80	
6209.00	21.540	54.800	5961.11	-84.26	501.53	1098.34	1677386.56	14249434.41	39°14'24.858"N	80°52'09.940"W	1252.27	61.292	1.04	-0.57	-2.32	BHI AT Curve <8-1/2"> (6042.01')(6209'-17833')
6236.00	21.730	56.060	5986.20	-85.94	507.17	1106.54	1677394.75	14249440.06	39°14'24.914"N	80°52'09.835"W	1262.17	61.246	1.86	0.70	4.67	
6283.00	21.560	66.980	6029.91	-87.04	515.41	1121.71	1677409.92	14249448.29	39°14'24.995"N	80°52'09.642"W	1279.44	61.249	8.57	-0.36	23.23	
6330.00	22.000	81.520	6073.58	-84.28	520.09	1138.38	1677426.58	14249452.97	39°14'25.041"N	80°52'09.430"W	1296.31	61.422	11.49	0.94	30.94	
6373.00	23.090	91.390	6113.31	-78.28	521.07	1154.78	1677442.98	14249453.95	39°14'25.051"N	80°52'09.222"W	1311.20	61.727	9.15	2.53	22.95	
6424.00	23.860	96.900	6160.10	-68.43	519.59	1175.02	1677463.21	14249452.47	39°14'25.036"N	80°52'08.965"W	1328.37	62.197	4.56	1.51	10.80	
6472.00	26.140	103.790	6203.61	-56.71	515.90	1194.93	1677483.11	14249448.79	39°14'24.999"N	80°52'08.712"W	1344.32	62.732	7.70	4.75	14.35	
6519.00	29.790	110.500	6245.12	-41.93	509.34	1215.94	1677504.11	14249442.23	39°14'24.934"N	80°52'08.445"W	1360.07	63.383	10.24	7.77	14.28	
6566.00	34.620	115.190	6284.88	-23.38	599.56	1238.97	1677527.13	14249432.45	39°14'24.837"N	80°52'08.152"W	1376.42	64.177	11.56	10.28	9.98	
6613.00	38.570	120.180	6322.62	-1.13	586.51	1263.73	1677551.89	14249419.40	39°14'24.708"N	80°52'07.838"W	1393.20	65.104	10.52	8.40	10.62	
6619.00†	39.082	121.078	6327.30	1.97	584.59	1266.97	1677555.12	14249417.49	39°14'24.689"N	80°52'07.797"W	1395.33	65.231	12.68	8.53	14.97	Middlesex: 6619' MD / 6327.3' TVD
6657.00	42.470	126.330	6356.08	23.15	570.80	1287.58	1677575.72	14249403.70	39°14'24.552"N	80°52'07.535"W	1408.43	66.092	12.68	8.92	13.82	
6708.00	47.390	133.410	6392.19	55.70	547.67	1315.11	1677603.25	14249380.58	39°14'24.323"N	80°52'07.185"W	1424.60	67.391	13.74	9.65	13.88	
6753.00	52.250	138.630	6421.23	88.17	522.92	1338.93	1677627.05	14249355.84	39°14'24.078"N	80°52'06.883"W	1437.42	68.667	13.96	10.80	11.60	
6798.00†	57.738	142.103	6447.04	123.80	494.53	1362.39	1677650.51	14249327.46	39°14'23.797"N	80°52'06.586"W	1449.37	70.050	13.73	12.19	7.72	Burkett: 6798' MD / 6447.0' TVD
6802.00	58.230	142.390	6449.16	127.11	491.84	1364.47	1677652.58	14249324.78	39°14'23.771"N	80°52'06.559"W	1450.41	70.178	13.73	12.31	7.19	
6850.00	64.940	144.670	6471.99	168.44	457.90	1389.53	1677677.63	14249290.85	39°14'23.435"N	80°52'06.241"W	1463.03	71.761	14.59	13.98	4.75	
6860.00†	65.901	145.334	6476.15	177.39	450.45	1394.74	1677682.84	14249283.40	39°14'23.361"N	80°52'06.175"W	1465.68	72.101	11.35	9.61	6.64	Tully: 6860' MD / 6476.2' TVD
6897.00	69.480	147.710	6490.20	211.22	421.90	1413.61	1677701.71	14249254.86	39°14'23.079"N	80°52'05.936"W	1475.23	73.382	11.35	9.67	6.42	
6921.00†	71.829	149.767	6498.15	233.72	402.55	1425.36	1677713.45	14249235.51	39°14'22.887"N	80°52'05.787"W	1481.11	74.229	12.70	9.79	8.57	Hamilton: 6921' MD / 6498.2' TVD
6940.00†	73.705	151.357	6503.78	251.81	386.74	1434.28	1677722.36	14249219.72	39°14'22.731"N	80°52'05.674"W	1485.50	74.909	12.70	9.87	8.37	Marcellus: 6940' MD / 6503.8' TVD
6945.00	74.200	151.770	6505.16	256.61	382.52	1436.56	1677724.65	14249215.49	39°14'22.689"N	80°52'05.645"W	1486.62	75.090	12.70	9.91	8.26	
6991.00	79.200	154.320	6515.74	301.33	342.63	1456.84	1677744.92	14249175.62	39°14'22.294"N	80°52'05.388"W	1496.59	76.765	12.13	10.87	5.54	
7038.00	83.930	156.460	6522.63	347.80	300.37	1476.19	1677764.26	14249133.38	39°14'21.877"N	80°52'05.143"W	1506.44	78.499	11.03	10.06	4.55	
7085.00	88.580	158.310	6525.70	394.65	257.09	1494.22	1677782.28	14249090.12	39°14'21.448"N	80°52'04.915"W	1516.17	80.237	10.64	9.89	3.94	
7180.00	89.850	159.420	6527.00	489.44	168.49	1528.46	1677816.51	14249001.55	39°14'20.572"N	80°52'04.481"W	1537.72	83.709	1.78	1.34	1.17	
7274.00	89.970	161.190	6527.15	583.05	79.99	1560.14	1677848.18	14248913.09	39°14'19.697"N	80°52'04.080"W	1562.19	87.065	1.89	0.13	1.88	
7369.00	90.090	160.760	6527.10	677.56	-9.82	1591.11	1677879.13	14248823.32	39°14'18.809"N	80°52'03.688"W	1591.14	90.354	0.47	0.13	-0.45	
7464.00	90.770	158.210	6526.39	772.28	-98.78	1624.40	1677912.41	14248734.39	39°14'17.929"N	80°52'03.267"W	1627.40	93.480	2.78	0.72	-2.68	

RECEIVED
Office of Oil and Gas

NOV 30 2017

WV Department of
Environmental Protection



Actual Wellpath Report

Hunter Unit 2H AWP Proj: 17858'

Page 11 of 16



REFERENCE WELLPATH IDENTIFICATION			
Operator	ANTERO RESOURCES CORPORATION	Slot	Slot #07
Area	Doddridge Co., WV	Well	Hunter Unit 2H
Field	Doddridge	Wellbore	Hunter Unit 2H AWB
Facility	James Webb Pad		

WELLPATH DATA (381 stations)																
MD (ft)	Inclination (°)	Azimuth (°)	TVD (ft)	Vert Sect (ft)	North (ft)	East (ft)	Grid East (US ft)	Grid North (US ft)	Latitude	Longitude	Closure Dist (ft)	Closure Dir (°)	DLS (°/100ft)	Build Rate (°/100ft)	Turn Rate (°/100ft)	Comments
7558.00	90.120	153.620	6525.66	866.24	-184.57	1662.75	1677950.74	14248648.63	39°14'17.081"N	80°52'02.781"W	1672.96	96.334	4.93	-0.69	-4.88	
7653.00	90.150	151.300	6525.43	961.13	-268.80	1706.67	1677994.65	14248564.44	39°14'16.248"N	80°52'02.224"W	1727.71	98.951	2.44	0.03	-2.44	
7747.00	89.940	149.400	6525.36	1054.80	-350.49	1753.17	1678041.13	14248482.78	39°14'15.440"N	80°52'01.635"W	1787.86	101.305	2.03	-0.22	-2.02	
7842.00	89.880	148.740	6525.51	1149.26	-431.98	1802.00	1678089.94	14248401.32	39°14'14.633"N	80°52'01.016"W	1853.05	103.481	0.70	-0.06	-0.69	
7937.00	89.820	151.500	6525.76	1243.89	-514.34	1849.32	1678137.24	14248318.99	39°14'13.819"N	80°52'00.416"W	1919.52	105.543	2.91	-0.06	2.91	
8031.00	90.490	156.440	6525.50	1337.84	-598.78	1890.56	1678178.46	14248234.59	39°14'12.983"N	80°51'59.893"W	1983.12	107.574	5.30	0.71	5.26	
8125.00	90.000	157.920	6525.10	1431.77	-685.42	1927.01	1678214.90	14248147.98	39°14'12.127"N	80°51'59.432"W	2045.28	109.580	1.66	-0.52	1.57	
8220.00	89.820	155.550	6525.25	1526.73	-772.69	1964.54	1678252.41	14248060.75	39°14'11.264"N	80°51'58.956"W	2111.03	111.471	2.50	-0.19	-2.49	
8314.00	90.150	155.600	6525.27	1620.73	-858.28	2003.40	1678291.26	14247975.20	39°14'10.417"N	80°51'58.464"W	2179.51	113.191	0.36	0.35	0.05	
8409.00	89.780	155.620	6525.33	1715.73	-944.80	2042.63	1678330.48	14247888.71	39°14'09.561"N	80°51'57.967"W	2250.56	114.822	0.39	-0.39	0.02	
8503.00	90.370	156.120	6525.21	1809.72	-1030.58	2081.06	1678368.89	14247802.96	39°14'08.713"N	80°51'57.480"W	2322.27	116.346	0.82	0.63	0.53	
8598.00	89.660	153.330	6525.18	1904.70	-1116.48	2121.62	1678409.43	14247717.10	39°14'07.863"N	80°51'56.967"W	2397.46	117.755	3.03	-0.75	-2.94	
8693.00	89.570	152.080	6525.82	1999.61	-1200.90	2165.18	1678452.97	14247632.71	39°14'07.028"N	80°51'56.414"W	2475.92	119.015	1.32	-0.09	-1.32	
8787.00	89.690	151.950	6526.43	2093.47	-1283.91	2209.29	1678497.06	14247549.74	39°14'06.207"N	80°51'55.855"W	2555.26	120.163	0.19	0.13	-0.14	
8882.00	89.540	154.010	6527.07	2188.40	-1368.53	2252.44	1678540.20	14247465.15	39°14'05.370"N	80°51'55.309"W	2635.60	121.282	2.17	-0.16	2.17	
8976.00	90.030	153.700	6527.42	2282.37	-1452.91	2293.86	1678581.61	14247380.80	39°14'04.536"N	80°51'54.784"W	2715.28	122.350	0.62	0.52	-0.33	
9071.00	89.420	154.660	6527.88	2377.35	-1538.42	2335.24	1678622.97	14247295.32	39°14'03.690"N	80°51'54.260"W	2796.44	123.376	1.20	-0.64	1.01	
9165.00	89.660	160.250	6528.63	2471.24	-1625.20	2371.27	1678658.98	14247208.58	39°14'02.831"N	80°51'53.803"W	2874.75	124.426	5.95	0.26	5.95	
9260.00	90.650	161.550	6528.38	2565.76	-1714.97	2402.35	1678690.05	14247118.85	39°14'01.944"N	80°51'53.410"W	2951.68	125.522	1.72	1.04	1.37	
9354.00	90.830	158.320	6527.16	2659.41	-1803.25	2434.59	1678722.28	14247030.61	39°14'01.071"N	80°51'53.002"W	3029.68	126.526	3.44	0.19	-3.44	
9449.00	90.280	155.150	6526.24	2754.36	-1890.51	2472.11	1678759.78	14246943.38	39°14'00.208"N	80°51'52.527"W	3112.13	127.406	3.39	-0.58	-3.34	
9543.00	90.310	153.240	6525.76	2848.34	-1975.13	2513.03	1678800.68	14246858.79	39°13'59.371"N	80°51'52.009"W	3196.31	128.166	2.03	0.03	-2.03	
9637.00	90.180	150.890	6525.35	2942.19	-2058.17	2557.06	1678844.70	14246775.79	39°13'58.549"N	80°51'51.451"W	3282.47	128.830	2.50	-0.14	-2.50	
9732.00	90.030	150.750	6525.18	3036.92	-2141.11	2603.38	1678890.99	14246692.88	39°13'57.729"N	80°51'50.864"W	3370.75	129.435	0.22	-0.16	-0.15	
9826.00	89.910	153.680	6525.23	3130.79	-2224.26	2647.19	1678934.79	14246609.76	39°13'56.906"N	80°51'50.308"W	3457.60	130.038	3.12	-0.13	3.12	
9921.00	90.090	157.610	6525.23	3225.77	-2310.79	2686.36	1678973.94	14246523.26	39°13'56.051"N	80°51'49.812"W	3543.49	130.702	4.14	0.19	4.14	
10015.00	89.820	159.910	6525.30	3319.57	-2398.40	2720.41	1679007.98	14246435.69	39°13'55.184"N	80°51'49.381"W	3626.70	131.400	2.46	-0.29	2.45	
10109.00	90.150	161.170	6525.33	3413.16	-2487.03	2751.73	1679039.28	14246347.10	39°13'54.308"N	80°51'48.985"W	3709.09	132.107	1.39	0.35	1.34	
10204.00	90.370	159.700	6524.90	3507.75	-2576.54	2783.54	1679071.08	14246257.62	39°13'53.423"N	80°51'48.582"W	3792.97	132.788	1.56	0.23	-1.55	
10298.00	90.220	157.230	6524.41	3601.58	-2663.97	2818.04	1679105.57	14246170.23	39°13'52.558"N	80°51'48.146"W	3877.90	133.390	2.63	-0.16	-2.63	

RECEIVED
Office of Oil and Gas

NOV 30 2017

WV Department of
Environmental Protection



Actual Wellpath Report

Hunter Unit 2H AWP Proj: 17858'
Page 12 of 16



REFERENCE WELLPATH IDENTIFICATION			
Operator	ANTERO RESOURCES CORPORATION	Slot	Slot #07
Area	Doddridge Co., WV	Well	Hunter Unit 2H
Field	Doddridge	Wellbore	Hunter Unit 2H AWB
Facility	James Webb Pad		

WELLPATH DATA (381 stations)																
MD (ft)	Inclination (°)	Azimuth (°)	TVD (ft)	Vert Sect (ft)	North (ft)	East (ft)	Grid East (US ft)	Grid North (US ft)	Latitude	Longitude	Closure Dist (ft)	Closure Dir (°)	DLS (°/100ft)	Build Rate (°/100ft)	Turn Rate (°/100ft)	Comments
10392.00	90.120	158.430	6524.13	3695.48	-2751.02	2853.51	1679141.03	14246083.21	39°13'51.697"N	80°51'47.696"W	3963.66	133.952	1.28	-0.11	1.28	
10486.00	90.430	156.810	6523.68	3789.39	-2837.94	2889.30	1679176.80	14245996.33	39°13'50.837"N	80°51'47.243"W	4049.93	134.486	1.75	0.33	-1.72	
10581.00	90.400	153.250	6522.99	3884.37	-2924.04	2929.40	1679216.88	14245910.26	39°13'49.986"N	80°51'46.735"W	4139.01	134.948	3.75	-0.03	-3.75	
10675.00	90.340	149.620	6522.39	3978.15	-3006.58	2974.33	1679261.80	14245827.75	39°13'49.169"N	80°51'46.166"W	4229.21	135.309	3.86	-0.06	-3.86	
10770.00	90.250	149.680	6521.90	4072.71	-3088.56	3022.33	1679309.78	14245745.81	39°13'48.358"N	80°51'45.558"W	4321.31	135.621	0.11	-0.09	0.06	
10864.00	90.180	151.200	6521.55	4166.39	-3170.32	3068.71	1679356.14	14245664.08	39°13'47.549"N	80°51'44.970"W	4412.25	135.933	1.62	-0.07	1.62	
10959.00	90.150	151.510	6521.27	4261.18	-3253.70	3114.25	1679401.66	14245580.74	39°13'46.725"N	80°51'44.393"W	4503.90	136.254	0.33	-0.03	0.33	
11053.00	89.780	150.720	6521.33	4354.95	-3336.00	3159.65	1679447.05	14245498.47	39°13'45.911"N	80°51'43.817"W	4594.81	136.555	0.93	-0.39	-0.84	
11147.00	90.180	151.880	6521.36	4448.74	-3418.45	3204.79	1679492.17	14245416.05	39°13'45.095"N	80°51'43.245"W	4685.78	136.848	1.31	0.43	1.23	
11242.00	90.090	155.220	6521.14	4543.69	-3503.49	3247.10	1679534.46	14245331.04	39°13'44.254"N	80°51'42.709"W	4776.83	137.175	3.52	-0.09	3.52	
11336.00	90.400	156.300	6520.74	4637.68	-3589.20	3285.69	1679573.04	14245245.36	39°13'43.406"N	80°51'42.221"W	4866.02	137.528	1.20	0.33	1.15	
11431.00	89.820	154.630	6520.55	4732.67	-3675.62	3325.14	1679612.47	14245158.98	39°13'42.551"N	80°51'41.721"W	4956.49	137.866	1.86	-0.61	-1.76	
11525.00	89.820	153.960	6520.85	4826.66	-3760.32	3365.91	1679653.22	14245074.32	39°13'41.714"N	80°51'41.205"W	5046.72	138.168	0.71	0.00	-0.71	
11620.00	90.000	156.230	6521.00	4921.65	-3846.48	3405.92	1679693.21	14244988.19	39°13'40.861"N	80°51'40.698"W	5137.67	138.476	2.40	0.19	2.39	
11714.00	89.720	155.320	6521.23	5015.65	-3932.20	3444.49	1679731.77	14244902.50	39°13'40.014"N	80°51'40.209"W	5227.49	138.783	1.01	-0.30	-0.97	
11809.00	89.910	154.590	6521.53	5110.65	-4018.27	3484.70	1679771.97	14244816.47	39°13'39.162"N	80°51'39.700"W	5318.80	139.068	0.79	0.20	-0.77	
11903.00	89.820	158.900	6521.76	5204.59	-4104.61	3521.81	1679809.06	14244730.16	39°13'38.308"N	80°51'39.230"W	5408.41	139.370	4.59	-0.10	4.59	
11997.00	89.910	161.810	6521.98	5298.19	-4193.13	3553.40	1679840.64	14244641.68	39°13'37.433"N	80°51'38.830"W	5496.27	139.721	3.10	0.10	3.10	
12092.00	89.910	163.860	6522.13	5392.33	-4283.89	3581.44	1679868.67	14244550.95	39°13'36.535"N	80°51'38.476"W	5583.77	140.104	2.16	0.00	2.16	
12186.00	89.690	161.460	6522.46	5485.52	-4373.61	3609.45	1679896.67	14244461.27	39°13'35.648"N	80°51'38.122"W	5670.68	140.468	2.56	-0.23	-2.55	
12281.00	89.630	158.490	6523.02	5580.17	-4462.86	3641.98	1679929.18	14244372.06	39°13'34.766"N	80°51'37.710"W	5760.31	140.783	3.13	-0.06	-3.13	
12375.00	89.690	158.060	6523.58	5674.03	-4550.18	3676.77	1679963.96	14244284.77	39°13'33.902"N	80°51'37.270"W	5850.03	141.060	0.46	0.06	-0.46	
12469.00	89.660	155.530	6524.11	5767.98	-4636.57	3713.81	1680000.98	14244198.42	39°13'33.048"N	80°51'36.801"W	5940.55	141.306	2.69	-0.03	-2.69	
12564.00	89.570	151.580	6524.75	5862.92	-4721.61	3756.11	1680043.26	14244113.41	39°13'32.206"N	80°51'36.265"W	6033.40	141.497	4.16	-0.09	-4.16	
12658.00	89.480	151.870	6525.53	5956.75	-4804.39	3800.63	1680087.77	14244030.67	39°13'31.388"N	80°51'35.701"W	6125.93	141.653	0.32	-0.10	0.31	
12752.00	89.540	152.610	6526.33	6050.62	-4887.57	3844.41	1680131.53	14243947.52	39°13'30.565"N	80°51'35.146"W	6218.35	141.812	0.79	0.06	0.79	
12847.00	89.940	155.360	6526.76	6145.59	-4972.93	3886.08	1680173.18	14243862.19	39°13'29.720"N	80°51'34.619"W	6311.23	141.994	2.93	0.42	2.89	
12941.00	89.940	155.950	6526.86	6239.59	-5058.57	3924.83	1680211.91	14243776.58	39°13'28.873"N	80°51'34.128"W	6402.61	142.193	0.63	0.00	0.63	
13036.00	89.880	156.400	6527.01	6334.57	-5145.48	3963.20	1680250.27	14243689.71	39°13'28.014"N	80°51'33.642"W	6494.84	142.395	0.48	-0.06	0.47	
13130.00	90.030	155.960	6527.08	6428.56	-5231.47	4001.16	1680288.22	14243603.76	39°13'27.163"N	80°51'33.161"W	6586.17	142.590	0.49	0.16	-0.47	

RECEIVED
Office of Oil and Gas

NOV 30 2017

WV Department of
Environmental Protection



Actual Wellpath Report

Hunter Unit 2H AWP Proj: 17858'

Page 13 of 16



REFERENCE WELLPATH IDENTIFICATION			
Operator	ANTERO RESOURCES CORPORATION	Slot	Slot #07
Area	Doddridge Co., WV	Well	Hunter Unit 2H
Field	Doddridge	Wellbore	Hunter Unit 2H AWB
Facility	James Webb Pad		

WELLPATH DATA (381 stations)																
MD (ft)	Inclination (°)	Azimuth (°)	TVD (ft)	Vert Sect (ft)	North (ft)	East (ft)	Grid East (US ft)	Grid North (US ft)	Latitude	Longitude	Closure Dist (ft)	Closure Dir (°)	DLS (°/100ft)	Build Rate (°/100ft)	Turn Rate (°/100ft)	Comments
13225.00	89.940	154.860	6527.11	6523.56	-5317.85	4040.69	1680327.74	14243517.41	39°13'26.309"N	80°51'32.661"W	6678.83	142.771	1.16	-0.09	-1.16	
13319.00	89.880	152.490	6527.26	6617.52	-5402.10	4082.38	1680369.40	14243433.20	39°13'25.476"N	80°51'32.133"W	6771.15	142.922	2.52	-0.06	-2.52	
13413.00	90.000	153.660	6527.36	6711.46	-5485.91	4124.94	1680411.95	14243349.42	39°13'24.647"N	80°51'31.593"W	6863.70	143.060	1.25	0.13	1.24	
13508.00	90.000	155.010	6527.36	6806.44	-5571.53	4166.09	1680453.08	14243263.83	39°13'23.800"N	80°51'31.072"W	6956.88	143.213	1.42	0.00	1.42	
13602.00	89.940	155.640	6527.41	6900.44	-5656.95	4205.33	1680492.30	14243178.45	39°13'22.955"N	80°51'30.575"W	7048.82	143.373	0.67	-0.06	0.67	
13697.00	89.940	156.550	6527.50	6995.43	-5743.80	4243.82	1680530.78	14243091.63	39°13'22.096"N	80°51'30.088"W	7141.52	143.541	0.96	0.00	0.96	
13791.00	89.910	154.750	6527.63	7089.42	-5829.43	4282.58	1680569.52	14243006.03	39°13'21.249"N	80°51'29.597"W	7233.45	143.697	1.92	-0.03	-1.91	
13886.00	89.540	155.050	6528.08	7184.42	-5915.46	4322.88	1680609.81	14242920.04	39°13'20.398"N	80°51'29.087"W	7326.66	143.842	0.50	-0.39	0.32	
13980.00	89.540	152.880	6528.84	7278.39	-5999.91	4364.13	1680651.04	14242835.62	39°13'19.563"N	80°51'28.564"W	7419.21	143.969	2.31	0.00	-2.31	
14075.00	89.540	154.330	6529.60	7373.35	-6085.01	4406.36	1680693.26	14242750.56	39°13'18.721"N	80°51'28.030"W	7512.88	144.090	1.53	0.00	1.53	
14169.00	89.540	157.720	6530.36	7467.32	-6170.88	4444.55	1680731.43	14242664.72	39°13'17.871"N	80°51'27.546"W	7604.85	144.237	3.61	0.00	3.61	
14264.00	89.780	157.490	6530.92	7562.23	-6258.71	4480.74	1680767.61	14242576.92	39°13'17.003"N	80°51'27.088"W	7697.31	144.400	0.35	0.25	-0.24	
14358.00	89.940	155.700	6531.15	7656.20	-6344.98	4518.08	1680804.93	14242490.70	39°13'16.150"N	80°51'26.615"W	7789.21	144.546	1.91	0.17	-1.90	
14453.00	89.910	153.080	6531.27	7751.18	-6430.64	4559.14	1680845.98	14242405.07	39°13'15.302"N	80°51'26.095"W	7882.82	144.664	2.76	-0.03	-2.76	
14548.00	89.910	151.080	6531.42	7846.04	-6514.57	4603.62	1680890.44	14242321.17	39°13'14.472"N	80°51'25.532"W	7977.03	144.752	2.11	0.00	-2.11	
14642.00	89.910	151.600	6531.57	7939.83	-6597.06	4648.71	1680935.50	14242238.72	39°13'13.656"N	80°51'24.961"W	8070.42	144.829	0.55	0.00	0.55	
14737.00	90.030	152.690	6531.62	8034.70	-6681.05	4693.09	1680979.87	14242154.76	39°13'12.825"N	80°51'24.398"W	8164.65	144.914	1.15	0.13	1.15	
14831.00	89.910	157.230	6531.67	8128.68	-6766.19	4732.87	1681019.63	14242069.65	39°13'11.983"N	80°51'23.895"W	8257.20	145.028	4.83	-0.13	4.83	
14926.00	89.940	157.140	6531.79	8223.62	-6853.76	4769.70	1681056.45	14241982.12	39°13'11.117"N	80°51'23.428"W	8350.09	145.165	0.10	0.03	-0.09	
15020.00	89.910	155.250	6531.92	8317.60	-6939.76	4807.64	1681094.38	14241896.15	39°13'10.266"N	80°51'22.948"W	8442.37	145.287	2.01	-0.03	-2.01	
15114.00	89.910	155.890	6532.06	8411.59	-7025.34	4846.52	1681133.24	14241810.60	39°13'09.420"N	80°51'22.456"W	8534.88	145.400	0.68	0.00	0.68	
15209.00	89.910	157.510	6532.21	8506.55	-7112.59	4884.09	1681170.80	14241723.39	39°13'08.557"N	80°51'21.980"W	8628.05	145.523	1.71	0.00	1.71	
15303.00	89.970	157.460	6532.31	8600.48	-7199.42	4920.09	1681206.78	14241636.59	39°13'07.698"N	80°51'21.524"W	8720.03	145.651	0.08	0.06	-0.05	
15397.00	89.850	156.260	6532.46	8694.43	-7285.86	4957.03	1681243.70	14241550.19	39°13'06.843"N	80°51'21.057"W	8812.26	145.770	1.28	-0.13	-1.28	
15492.00	89.940	154.710	6532.63	8789.43	-7372.29	4996.45	1681283.10	14241463.79	39°13'05.988"N	80°51'20.558"W	8905.91	145.873	1.63	0.09	-1.63	
15586.00	89.910	155.610	6532.76	8883.43	-7457.60	5035.93	1681322.58	14241378.52	39°13'05.145"N	80°51'20.058"W	8998.69	145.970	0.96	-0.03	0.96	
15680.00	89.880	155.420	6532.93	8977.42	-7543.14	5074.89	1681361.52	14241293.01	39°13'04.298"N	80°51'19.565"W	9091.40	146.068	0.20	-0.03	-0.20	
15775.00	89.910	156.670	6533.10	9072.41	-7629.96	5113.46	1681400.08	14241206.23	39°13'03.440"N	80°51'19.076"W	9184.97	146.171	1.32	0.03	1.32	
15869.00	90.000	154.930	6533.18	9166.40	-7715.69	5151.99	1681438.59	14241120.53	39°13'02.592"N	80°51'18.588"W	9277.66	146.268	1.85	0.10	-1.85	
15963.00	89.940	153.020	6533.23	9260.38	-7800.16	5193.24	1681479.82	14241036.10	39°13'01.756"N	80°51'18.066"W	9370.82	146.345	2.03	-0.06	-2.03	

RECEIVED
Office of Oil and Gas

NOV 30 2017

WV Department of
Environmental Protection



Actual Wellpath Report

Hunter Unit 2H AWP Proj: 17858
Page 14 of 16



REFERENCE WELLPATH IDENTIFICATION

Operator	ANTERO RESOURCES CORPORATION
Area	Doddridge Co., WV
Field	Doddridge
Facility	James Webb Pad
Slot	Hunter Unit 2H
Slot #07	Hunter Unit 2H AWP

WELLPATH DATA (381 stations)

MD	Inclination Azimuth	TVD	Vert Sect	North	East	Grid East	Grid North	Latitude	Longitude	Closure Dist	Closure Dir	DLS	Build Rate	Turn Rate	Comments
(ft)	(°)	(ft)	(ft)	(ft)	(ft)	(US ft)	(US ft)	(ft)	(ft)	(ft)	(ft)	(ft/100ft)	(ft/100ft)	(ft/100ft)	
16057.00	152.780	6533.37	9354.30	-7883.84	5236.06	1681522.62	14240952.45	39°13'00.92"N	80°51'17.52"W	9464.21	146.410	0.26	-0.06	-0.26	
16161.00	90.370	152.570	6533.17	-7967.35	5279.21	1681565.75	14240868.97	39°13'00.102"N	80°51'16.97"W	9557.65	146.471	0.57	-0.52	-0.22	
16246.00	90.400	153.160	6532.53	-8051.89	5322.53	1681609.06	14240784.46	39°12'59.26"N	80°51'16.429"W	9652.06	146.534	0.62	0.03	0.62	
16340.00	90.250	154.300	6532.00	-8136.18	5364.14	1681650.65	14240700.21	39°12'58.432"N	80°51'15.902"W	9745.33	146.603	1.22	-0.16	1.21	
16435.00	90.220	154.600	6531.61	-8221.89	5405.11	1681691.61	14240614.53	39°12'57.585"N	80°51'15.383"W	9839.44	146.679	0.32	-0.03	0.32	
16529.00	90.650	154.800	6530.89	-8306.87	5445.28	1681731.76	14240529.59	39°12'56.744"N	80°51'14.874"W	9932.53	146.755	0.50	0.46	0.21	
16623.00	90.550	154.840	6529.91	-8391.93	5485.27	1681771.74	14240444.56	39°12'55.903"N	80°51'14.368"W	10025.60	146.830	0.11	-0.11	0.04	
16718.00	91.380	155.230	6528.31	-8478.04	5525.36	1681811.81	14240358.48	39°12'55.051"N	80°51'13.860"W	10119.63	146.907	0.97	0.87	0.41	
16813.00	91.480	155.590	6525.94	-8564.40	5564.88	1681851.31	14240272.16	39°12'54.197"N	80°51'13.360"W	10213.56	146.985	0.39	0.11	0.38	
16908.00	91.420	156.210	6523.54	-8651.09	5603.66	1681890.08	14240185.50	39°12'53.339"N	80°51'12.869"W	10307.39	147.067	0.66	-0.06	0.65	
17002.00	91.450	157.530	6521.18	-8737.51	5640.57	1681926.97	14240099.12	39°12'52.485"N	80°51'12.402"W	10400.00	147.155	1.40	0.03	1.40	
17097.00	90.950	153.820	6519.19	-8824.04	5679.69	1681966.07	14240012.63	39°12'51.629"N	80°51'11.907"W	10493.93	147.232	3.94	-0.53	-3.91	
17286.00	90.860	155.460	6516.25	-8908.29	5723.53	1682009.90	14239928.40	39°12'50.795"N	80°51'11.351"W	10588.51	147.279	2.76	-0.09	-2.76	
17381.00	90.890	157.050	6514.78	-9079.21	5803.96	1682090.29	14239757.56	39°12'49.105"N	80°51'10.333"W	10775.80	147.411	1.67	0.00	1.67	
17476.00	90.950	156.750	6513.25	-9166.58	5841.22	1682127.54	14239670.22	39°12'48.240"N	80°51'09.861"W	10869.50	147.493	0.32	0.06	-0.32	
17571.00	90.950	156.390	6511.68	-9253.73	5878.99	1682165.30	14239583.10	39°12'47.378"N	80°51'09.383"W	10963.31	147.572	0.38	0.00	-0.38	
17665.00	90.830	155.620	6510.22	-9339.60	5917.21	1682203.50	14239497.27	39°12'46.529"N	80°51'08.900"W	11056.29	147.643	0.83	-0.13	-0.82	
17760.00	90.920	155.730	6508.77	-9426.16	5956.34	1682242.61	14239410.75	39°12'45.673"N	80°51'08.404"W	11150.36	147.711	0.15	0.09	0.12	
17833.00	90.980	155.140	6507.56	-9492.54	5986.68	1682272.95	14239344.39	39°12'45.016"N	80°51'08.020"W	11222.69	147.761	0.81	0.08	-0.81	
17858.00	90.980	155.140	6507.13	-9515.22	5997.19	1682283.45	14239321.72	39°12'44.792"N	80°51'07.887"W	11247.48	147.778	0.00	0.00	0.00	Projected MD at TD: 17858

RECEIVED
Office of Oil and Gas
NOV 30 2017
WV Department of
Environmental Protection



Actual Wellpath Report

Hunter Unit 2H AWP Proj: 17858'

Page 15 of 16



REFERENCE WELLPATH IDENTIFICATION			
Operator	ANTERO RESOURCES CORPORATION	Slot	Slot #07
Area	Doddridge Co., WV	Well	Hunter Unit 2H
Field	Doddridge	Wellbore	Hunter Unit 2H AWB
Facility	James Webb Pad		

HOLE & CASING SECTIONS - Ref Wellbore: Hunter Unit 2H AWB Ref Wellpath: Hunter Unit 2H AWP Proj: 17858'									
String/Diameter	Start MD [ft]	End MD [ft]	Interval [ft]	Start TVD [ft]	End TVD [ft]	Start N/S [ft]	Start E/W [ft]	End N/S [ft]	End E/W [ft]
20in Conductor	25.00	65.00	40.00	25.00	65.00	0.00	0.00	0.02	-0.11
13.375in Casing Surface	25.00	454.00	429.00	25.00	453.99	0.00	0.00	-0.22	-3.26
9.625in Casing Intermediate	25.00	2575.00	2550.00	25.00	2573.84	0.00	0.00	40.27	-15.63

TARGETS								
Name	TVD [ft]	North [ft]	East [ft]	Grid East [US ft]	Grid North [US ft]	Latitude	Longitude	Shape
Hunter Unit 2H POE Rev-2	6504.00	354.56	1431.11	1677719.20	14249187.55	39°14'22.413"N	80°52'05.715"W	point
Hunter Unit 2H BHL Rev-2	6525.00	-9522.49	6006.42	1682292.68	14239314.45	39°12'44.720"N	80°51'07.770"W	point
Hunter Unit 2H LP Rev-2	6525.00	227.49	1489.98	1677778.04	14249060.53	39°14'21.156"N	80°52'04.969"W	point

WELLPATH COMPOSITION - Ref Wellbore: Hunter Unit 2H AWB Ref Wellpath: Hunter Unit 2H AWP Proj: 17858'				
Start MD [ft]	End MD [ft]	Positional Uncertainty Model	Log Name/Comment	Wellbore
25.00	6042.01	SDI Keeper v1.04	01_SDI Std. Keeper Gyro (100' - 6030.01')	Hunter Unit 2H AWB
6042.01	17833.00	BHI AutoTrak Curve (Short)	02_BHI AT Curve <8-1/2">(6042.01')(6209'-17833')	Hunter Unit 2H AWB
17833.00	17858.00	Blind Drilling (std)	Projection to bit	Hunter Unit 2H AWB

RECEIVED
Office of Oil and Gas

NOV 30 2017

WV Department of
Environmental Protection