

LATITUDE 39°15'00"

11,349'

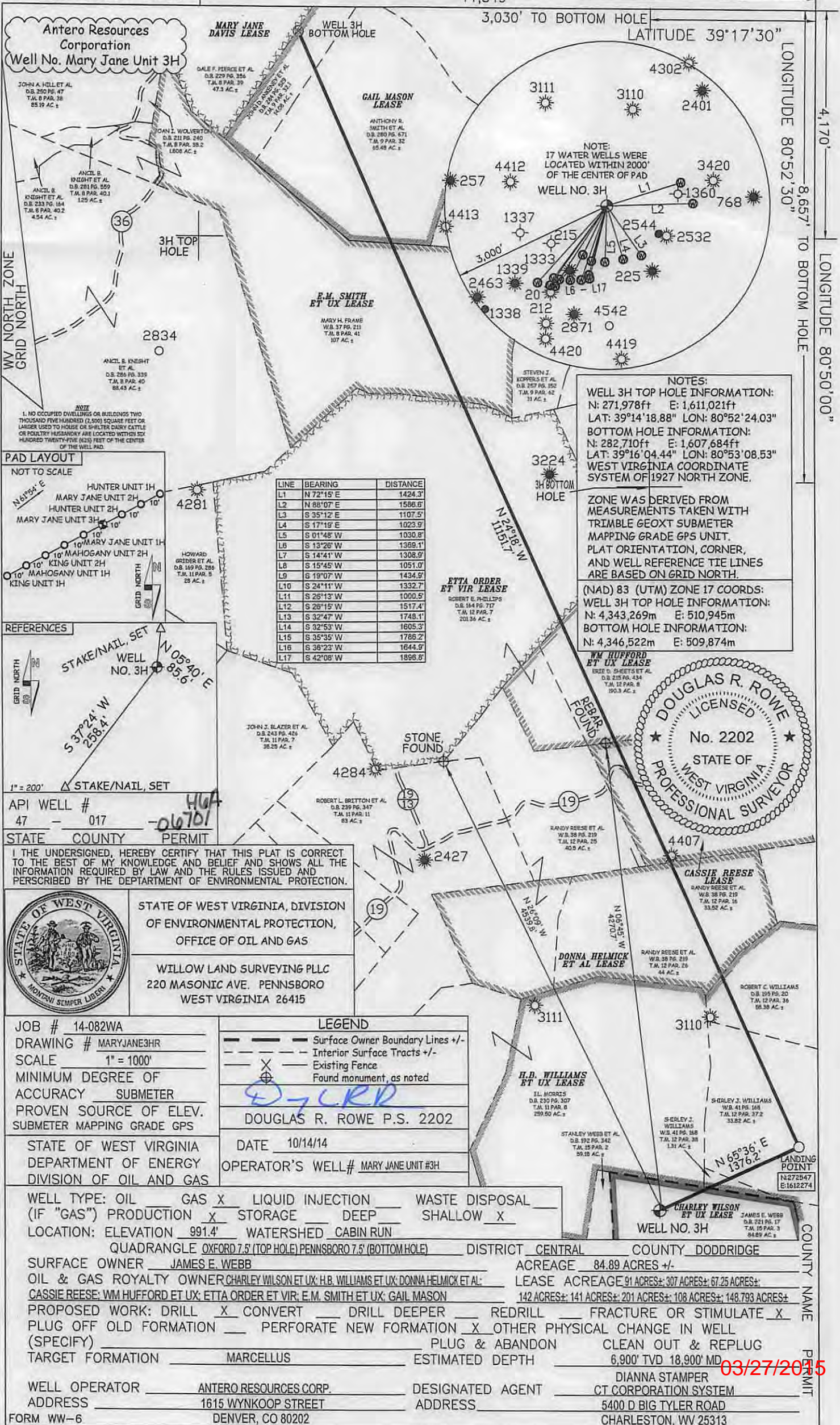
3,030' TO BOTTOM HOLE

LATITUDE 39°17'30"

LONGITUDE 80°52'30"

4,170'

LONGITUDE 80°50'00"



Antero Resources Corporation
Well No. Mary Jane Unit 3H

JOHN A. HILL ET AL.
D.B. 250 PG. 47
T.M. 8 PAR. 38
25.19 AC. ±

DALE F. PIERCE ET AL.
D.B. 229 PG. 356
T.M. 8 PAR. 39
47.3 AC. ±

ANTHONY R. SMITH ET AL.
D.B. 280 PG. 671
T.M. 9 PAR. 32
55.48 AC. ±

JOHN I. WOLVERTON
D.B. 211 PG. 240
T.M. 8 PAR. 38.2
1808 AC. ±

ANCL B. KNIGHT ET AL.
D.B. 231 PG. 359
T.M. 8 PAR. 40.1
125 AC. ±

ANCL B. KNIGHT ET AL.
D.B. 233 PG. 184
T.M. 8 PAR. 40.2
4.54 AC. ±

ANCL B. KNIGHT ET AL.
D.B. 286 PG. 335
T.M. 8 PAR. 40
88.43 AC. ±

HOWARD GRIDER ET AL.
D.B. 169 PG. 286
T.M. 11 PAR. 5
28 AC. ±

JOHN J. BLAZER ET AL.
D.B. 243 PG. 426
T.M. 11 PAR. 7
32.25 AC. ±

ROBERT L. BRETTON ET AL.
D.B. 239 PG. 347
T.M. 11 PAR. 11
83 AC. ±

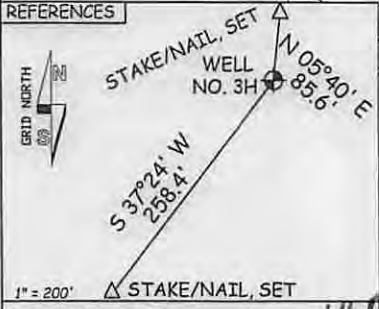
STANLEY WEBB ET AL.
D.B. 192 PG. 342
T.M. 10 PAR. 2
59.18 AC. ±

STANLEY J. WILLIAMS
D.B. 105 PG. 20
T.M. 12 PAR. 36
66.38 AC. ±

CHARLEY WILSON ET AL.
D.B. 101 PG. 17
T.M. 10 PAR. 3
84.89 AC. ±



LINE	BEARING	DISTANCE
L1	N 72°15' E	1424.3'
L2	N 88°07' E	1586.6'
L3	S 35°12' E	1107.5'
L4	S 17°19' E	1023.9'
L5	S 01°48' W	1030.8'
L6	S 13°26' W	1369.1'
L7	S 14°41' W	1308.9'
L8	S 15°45' W	1051.0'
L9	S 19°07' W	1434.9'
L10	S 24°11' W	1332.7'
L11	S 26°13' W	1009.5'
L12	S 28°15' W	1517.4'
L13	S 32°47' W	1748.1'
L14	S 32°53' W	1605.3'
L15	S 35°35' W	1786.2'
L16	S 36°23' W	1644.9'
L17	S 42°08' W	1896.8'



API WELL # 47 - 017
STATE COUNTY PERMIT

I THE UNDERSIGNED, HEREBY CERTIFY THAT THIS PLAT IS CORRECT TO THE BEST OF MY KNOWLEDGE AND BELIEF AND SHOWS ALL THE INFORMATION REQUIRED BY LAW AND THE RULES ISSUED AND PERSCRIBED BY THE DEPARTMENT OF ENVIRONMENTAL PROTECTION.



STATE OF WEST VIRGINIA, DIVISION OF ENVIRONMENTAL PROTECTION, OFFICE OF OIL AND GAS

WILLOW LAND SURVEYING PLLC
220 MASONIC AVE. PENNSBORO WEST VIRGINIA 26415

JOB # 14-082WA
DRAWING # MARYJANE3HR
SCALE 1" = 1000'
MINIMUM DEGREE OF ACCURACY SUBMETER
PROVEN SOURCE OF ELEV. SUBMETER MAPPING GRADE GPS

STATE OF WEST VIRGINIA DEPARTMENT OF ENERGY DIVISION OF OIL AND GAS

LEGEND

- Surface Owner Boundary Lines +/-
- Interior Surface Tracts +/-
- Existing Fence
- Found monument, as noted

DOUGLAS R. ROWE P.S. 2202

DATE 10/14/14
OPERATOR'S WELL# MARY JANE UNIT #3H

WELL TYPE: OIL ___ GAS LIQUID INJECTION ___ WASTE DISPOSAL ___
(IF "GAS") PRODUCTION STORAGE ___ DEEP ___ SHALLOW
LOCATION: ELEVATION 991.4' WATERSHED CABIN RUN
QUADRANGLE OXFORD 7.5 (TOP HOLE) PENNSBORO 7.5 (BOTTOM HOLE) DISTRICT CENTRAL COUNTY DODDRIDGE

SURFACE OWNER JAMES E. WEBB ACREAGE 84.89 ACRES +/-
OIL & GAS ROYALTY OWNER CHARLEY WILSON ET UX; H.B. WILLIAMS ET UX; DONNA HELMICK ET AL.; LEASE ACREAGE 91 ACRES±; 307 ACRES±; 67.25 ACRES±;
CASSIE REESE; WM HUFFORD ET UX; ETTA ORDER ET VIR; E.M. SMITH ET UX; GAIL MASON 142 ACRES±; 141 ACRES±; 201 ACRES±; 108 ACRES±; 148.793 ACRES±

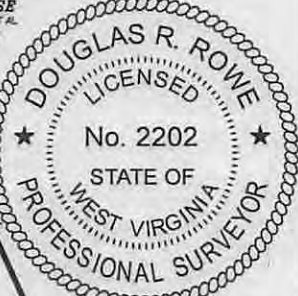
PROPOSED WORK: DRILL CONVERT ___ DRILL DEEPER ___ REDRILL ___ FRACTURE OR STIMULATE
PLUG OFF OLD FORMATION ___ PERFORATE NEW FORMATION OTHER PHYSICAL CHANGE IN WELL (SPECIFY) ___ PLUG & ABANDON CLEAN OUT & REPLUG

TARGET FORMATION MARCELLUS ESTIMATED DEPTH 6,900' TVD 18,900' MD
WELL OPERATOR ANTERO RESOURCES CORP. DESIGNATED AGENT DIANNA STAMPER
ADDRESS 1615 WYNKOOP STREET ADDRESS 5400 D BIG TYLER ROAD
FORM WW-6 DENVER, CO 80202 CHARLESTON, WV 25313

NOTES:
WELL 3H TOP HOLE INFORMATION:
N: 271,978ft E: 1,611,021ft
LAT: 39°14'18.88" LON: 80°52'24.03"
BOTTOM HOLE INFORMATION:
N: 282,710ft E: 1,607,684ft
LAT: 39°16'04.44" LON: 80°53'08.53"
WEST VIRGINIA COORDINATE SYSTEM OF 1927 NORTH ZONE.

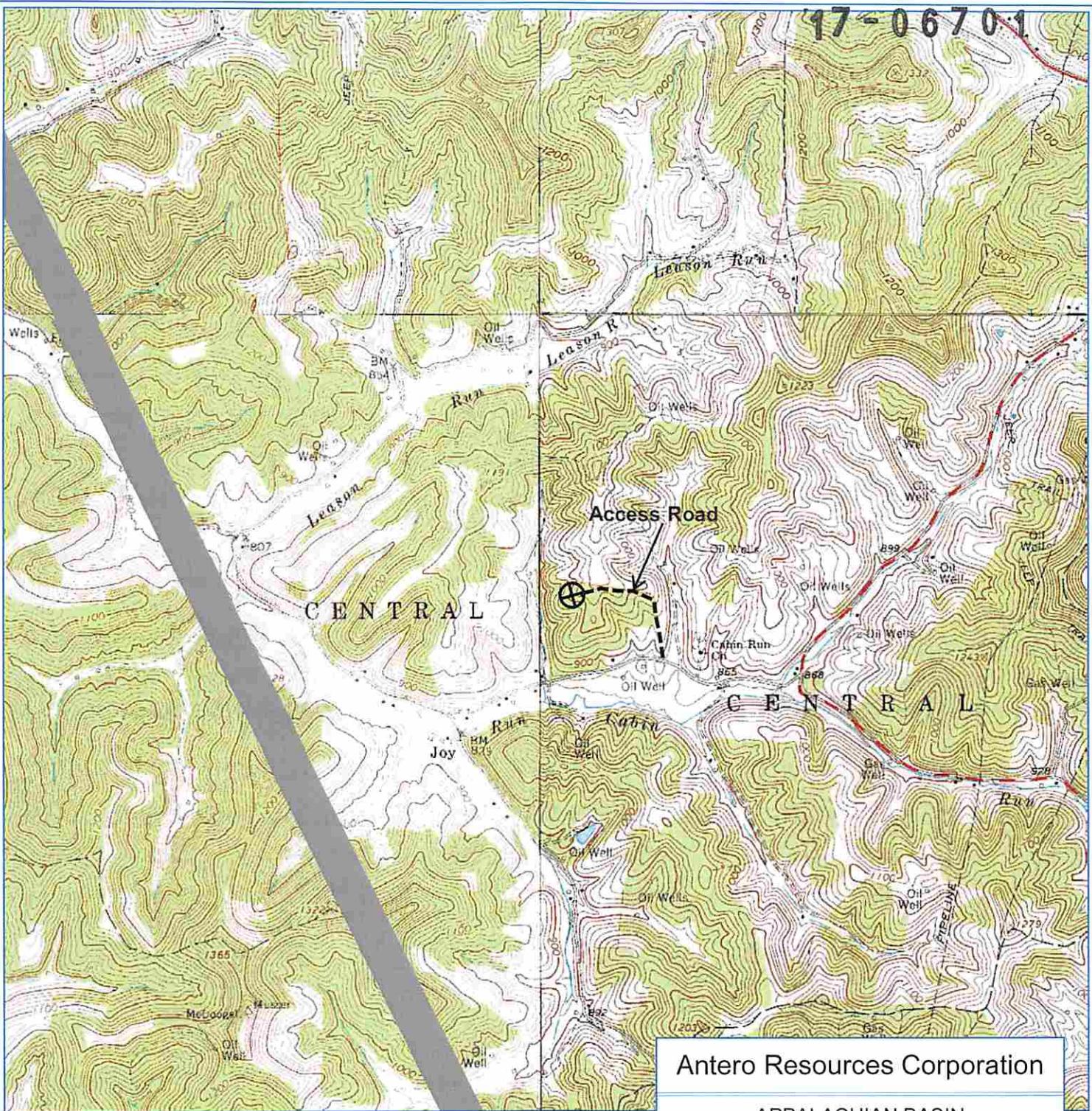
ZONE WAS DERIVED FROM MEASUREMENTS TAKEN WITH TRIMBLE GEOXT SUBMETER MAPPING GRADE GPS UNIT. PLAT ORIENTATION, CORNER, AND WELL REFERENCE TIE LINES ARE BASED ON GRID NORTH.

(NAD) 83 (UTM) ZONE 17 COORDS:
WELL 3H TOP HOLE INFORMATION:
N: 4,343,269m E: 510,945m
BOTTOM HOLE INFORMATION:
N: 4,346,522m E: 509,874m



03/27/2015

47-0670-1



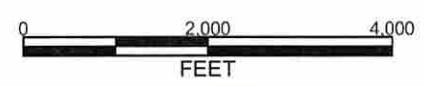
PETRA 11/24/2014 3:42:15 PM

Antero Resources Corporation

APPALACHIAN BASIN

Mary Jane Unit 3H

Doddridge County, WV



REMARKS
 QUADRANGLE: OXFORD
 WATERSHED: CABIN RUN
 DISTRICT: CENTRAL

November 24, 2014

RECEIVED
 Office of Oil and Gas
 DEC 01 2014
 WV Department of
 Environmental Protection