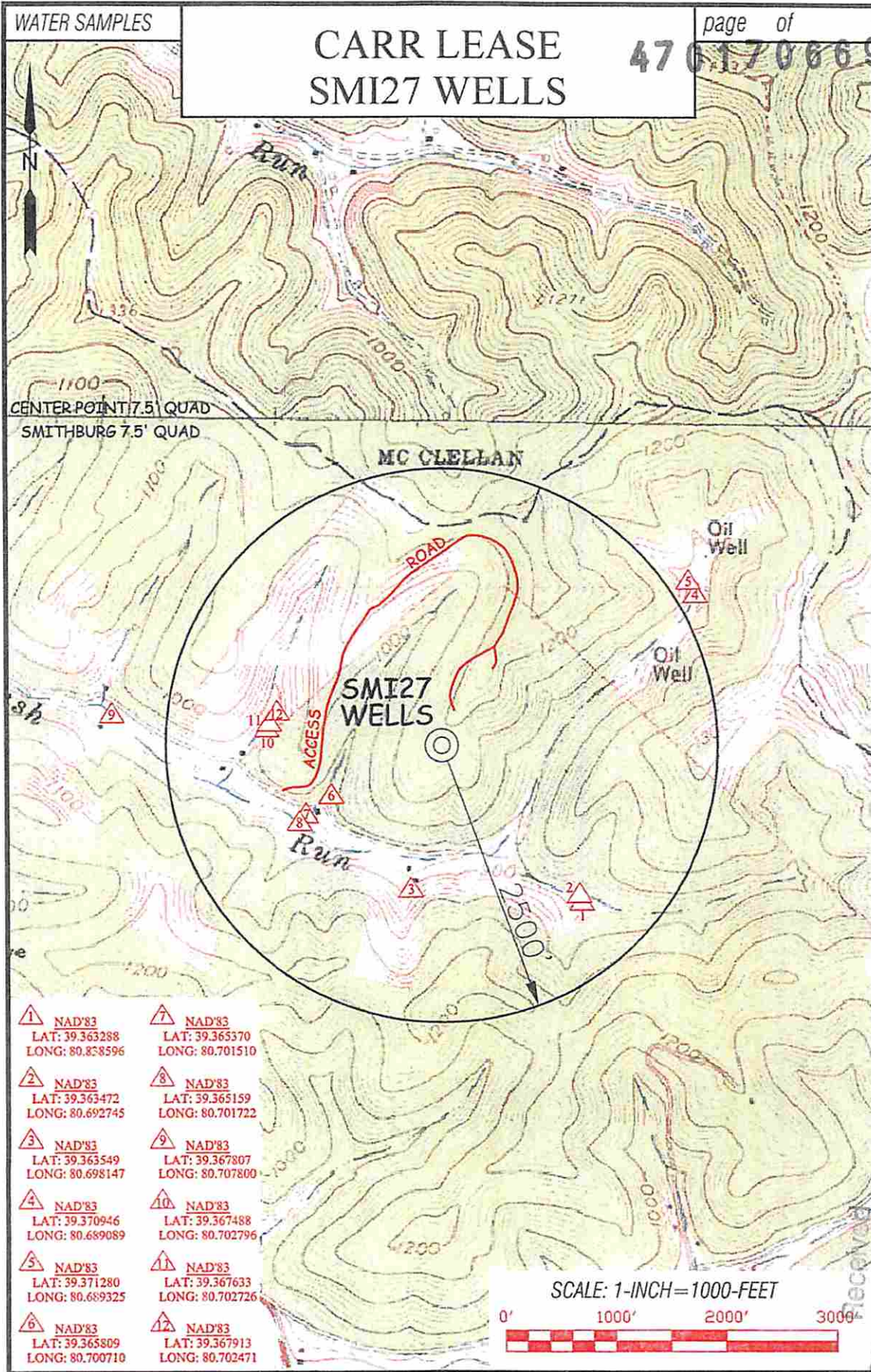




# CARR LEASE SMI27 WELLS



- |   |  |
|---|--|
| 1 NAD'83<br>LAT: 39.363288<br>LONG: 80.838596 | 7 NAD'83<br>LAT: 39.365370<br>LONG: 80.701510  |
| 2 NAD'83<br>LAT: 39.363472<br>LONG: 80.692745 | 8 NAD'83<br>LAT: 39.365159<br>LONG: 80.701722  |
| 3 NAD'83<br>LAT: 39.363549<br>LONG: 80.698147 | 9 NAD'83<br>LAT: 39.367807<br>LONG: 80.707800  |
| 4 NAD'83<br>LAT: 39.370946<br>LONG: 80.689089 | 10 NAD'83<br>LAT: 39.367488<br>LONG: 80.702796 |
| 5 NAD'83<br>LAT: 39.371280<br>LONG: 80.689325 | 11 NAD'83<br>LAT: 39.367633<br>LONG: 80.702726 |
| 6 NAD'83<br>LAT: 39.365809<br>LONG: 80.700710 | 12 NAD'83<br>LAT: 39.367913<br>LONG: 80.702471 |

SCALE: 1-INCH=1000-FEET



**Professional Energy Consultants**  
A DIVISION OF S&L LAND SURVEYING, INC.

**SLS**  
SURVEYORS  
ENGINEERS  
ENVIRONMENTAL  
PROJECT MGMT.

DRAWN BY: K.D.W. FILE NO: 7584 DATE: 11/07/14 CADD FILE: 7584ENC2427.dwg

TOPO SECTIONS OF:  
SMITHBURG, WV 7.5' &  
CENER POINT, WV 7.5' QUADS

DISTRICT	COUNTY	TAX MAP-PARCEL NO.
GRANT	DODDRIDGE	06-15

OPERATOR:  
EQT PRODUCTION COMPANY  
115 PROFESSIONAL PLACE  
P.O. BOX 280  
BRIDGEPORT, WV 26330

Office of Oil & Gas

NOV 20 2014