

RECEIVED

JUL 20 2015

WV GEOLOGICAL SURVEY
MORGANTOWN, WV



McGee Unit 2H
Doddridge County WV
Northing: 14248465.78
Easting: 1679258.13
As Drilled



Genie Lightfoot
9:25, February 03 2015
Scientific Drilling
11220 N.W. 10th Street
Yukon, OK 73089

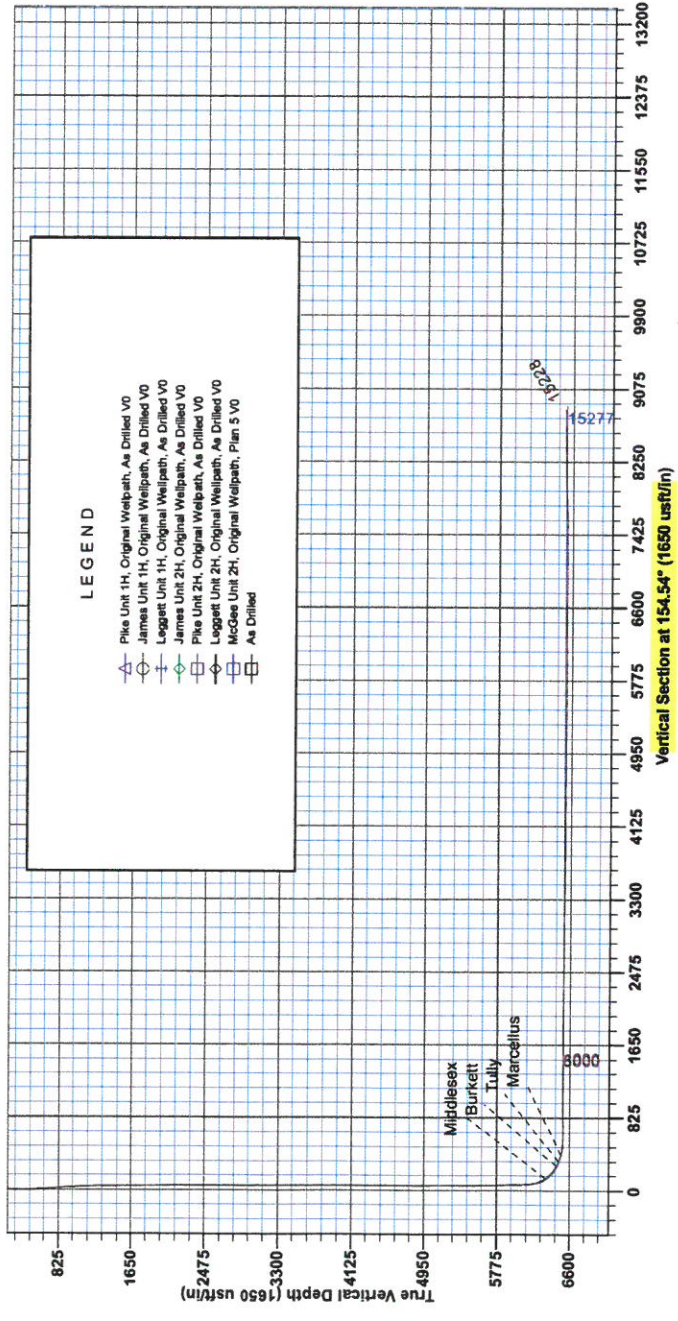
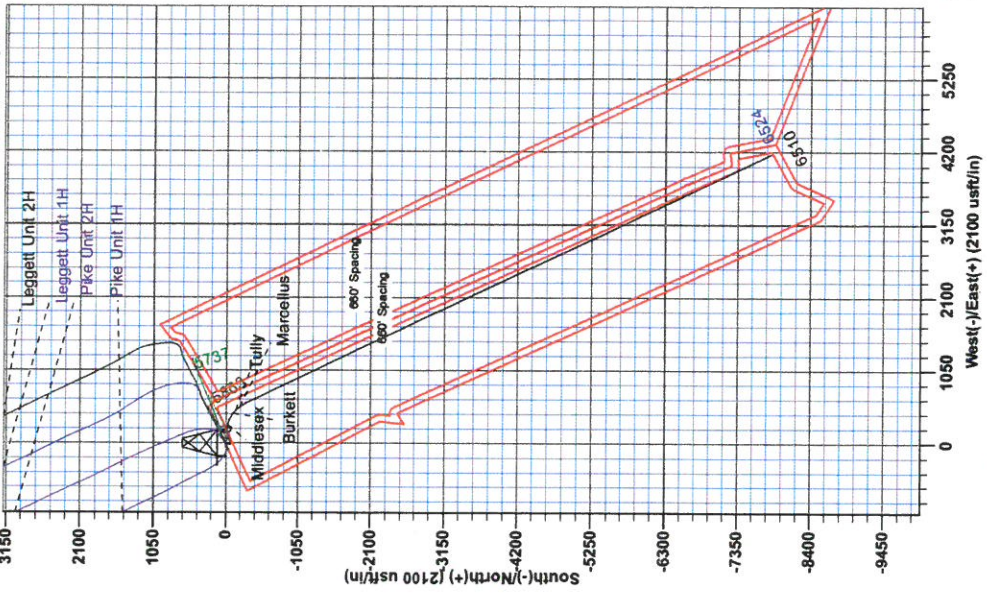
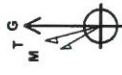
WELL DETAILS		McGee Unit 2H	
Ground Level:	980.0	Latitude	Longitude
+N/-S	+E/-W	0.0	0.0
0.0	0.0	14248465.78	1679258.13
		38° 14' 15.253 N	80° 51' 46.162 W

PROJECT DETAILS:Doddridge County WV
Geodetic System: Universal Transverse Mercator (US Survey Feet)
Datum: NAD 1927 (NADCON CONUS)
Ellipsoid: Clarke 1866
Zone: Zone 17N (84 W to 78 W)
System Datum: Mean Sea Level

SITE DETAILS:
Robert Williams Pad: Leggett/ Pike Pad/James/McGee
Site Centre Northing: 14248467.61
Easting: 1679246.10
Positional Uncertainty: 0.0
Convergence: 0.09
Local North: Grid

Azimuths to Grid North
True North: -0.09°
Magnetic North: -8.50°
Magnetic Field
Strength: 52194.3nT
Dip Angle: 66.81°
Date: 11/03/2014
Model: BGGM2014

To convert Magnetic North to Grid, Subtract 8.50°
To convert True North to Grid, Subtract 0.09°



LEGEND

- △ Pike Unit 1H, Original Wellpath, As Drilled VO
- James Unit 1H, Original Wellpath, As Drilled VO
- Leggett Unit 1H, Original Wellpath, As Drilled VO
- James Unit 2H, Original Wellpath, As Drilled VO
- Pike Unit 2H, Original Wellpath, As Drilled VO
- Leggett Unit 2H, Original Wellpath, As Drilled VO
- McGee Unit 2H, Original Wellpath, Plan 5 VO
- As Drilled

Vertical Section at 154.54' (1650 usft/in)



RECEIVED
JUL 20 2015
WV GEOLOGICAL SURVEY
MORGANTOWN, WV

Antero

**Doddridge County WV
Robert Williams Pad: Leggett/ Pike Pad/James/McGee
McGee Unit 2H
Original Wellpath**

Design: As Drilled

EOW Completion Report

03 February, 2015

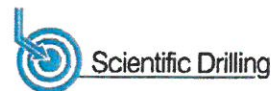


JUL 20 2015



WV GEOLOGICAL SURVEY
MORGANTOWN, WV

EOW Completion Report



Company: Antero	Local Co-ordinate Reference: Well McGee Unit 2H
Project: Doddridge County WV	TVD Reference: Precision 523: GL 990' + KB 19' @ 1009.0usft
Site: Robert Williams Pad: Leggett/ Pike Pad/James/M	MD Reference: Precision 523: GL 990' + KB 19' @ 1009.0usft
Well: McGee Unit 2H	North Reference: Grid
Wellbore: Original Wellpath	Survey Calculation Method: Minimum Curvature
Design: As Drilled	Database: Oklahoma District

Project	Doddridge County WV, McClellan District		
Map System:	Universal Transverse Mercator (US Survey Fee	System Datum:	Mean Sea Level
Geo Datum:	NAD 1927 (NADCON CONUS)		
Map Zone:	Zone 17N (84 W to 78 W)		

Site	Robert Williams Pad: Leggett/ Pike Pad/James/McGee				
Site Position:	Northing:	14,248,467.61 usft	Latitude:	39° 14' 15.272 N	
From: Map	Easting:	1,679,248.10 usft	Longitude:	80° 51' 46.289 W	
Position Uncertainty:	0.0 usft	Slot Radius:	13-3/16"	Grid Convergence:	0.09 °

Well	McGee Unit 2H, Marcellus				
Well Position	+N/-S	0.0 usft	Northing:	14,248,465.78 usft	
	+E/-W	0.0 usft	Easting:	1,679,258.13 usft	
Position Uncertainty	2.0 usft	Wellhead Elevation:	1,009.0 usft	Ground Level:	990.0 usft

Wellbore	Original Wellpath
-----------------	-------------------

Magnetics	Model Name	Sample Date	Declination (°)	Dip Angle (°)	Field Strength (nT)
	BGGM2014	11/3/2014	-8.42	66.81	52,194

Design	As Drilled				
Audit Notes:					
Version:	1.0	Phase:	ACTUAL	Tie On Depth:	0.0
Vertical Section:	Depth From (TVD) (usft)	+N/-S (usft)	+E/-W (usft)	Direction (°)	
	0.0	0.0	0.0	154.54	

Survey Program		Date	2/3/2015		
From (usft)	To (usft)	Survey (Wellbore)	Tool Name	Description	
106.0	5,746.0	Survey #5 Def KOP Gyro (Original Wellpa	Standard Keeper 104	Standard Wireline Keeper ver 1.0.4	
5,759.0	15,228.0	Survey #6 MWD Surveys (Original Wellpa	SDI MWD	Scientific Drilling Intl. MWD - Standard ver 1.0.1	

MD (usft)	Inc (°)	Azi (azimuth) (°)	TVD (usft)	N/S (usft)	E/W (usft)	V. Sec (usft)	DLeg (°/100usft)
0.0	0.00	0.00	0.0	0.0	0.0	0.0	0.00
106.0	0.16	274.57	106.0	0.0	-0.1	-0.1	0.15
131.0	0.14	261.65	131.0	0.0	-0.2	-0.1	0.16
156.0	0.15	254.58	156.0	0.0	-0.3	-0.1	0.08
181.0	0.15	260.60	181.0	0.0	-0.3	-0.1	0.06
206.0	0.20	275.20	206.0	0.0	-0.4	-0.2	0.27
231.0	0.21	248.74	231.0	0.0	-0.5	-0.2	0.38
256.0	0.20	255.03	256.0	-0.1	-0.6	-0.2	0.10
281.0	0.19	260.32	281.0	-0.1	-0.7	-0.2	0.08
306.0	0.25	262.43	306.0	-0.1	-0.8	-0.2	0.24
331.0	0.23	253.28	331.0	-0.1	-0.9	-0.3	0.17

RECEIVED

JUL 20 2015



EOW Completion Report



Company: Antero
Project: Doddridge County WV
Site: Robert Williams Pad: Leggett/ Pike Pad/James/M
Well: McGee Unit 2H
Wellbore: Original Wellpath
Design: As Drilled

Local Co-ordinate Reference: Well McGee Unit 2H
TVD Reference: Precision 523: GL 990' + KB 19' @ 1009.0usft
MD Reference: Precision 523: GL 990' + KB 19' @ 1009.0usft
North Reference: Grid
Survey Calculation Method: Minimum Curvature
Database: Oklahoma District

Survey

MD (usft)	Inc (°)	Azi (azimuth) (°)	TVD (usft)	N/S (usft)	EW (usft)	V. Sec (usft)	DLeg (°/100usft)
356.0	0.11	189.80	356.0	-0.2	-0.9	-0.3	0.82
381.0	0.12	238.72	381.0	-0.2	-0.9	-0.2	0.38
406.0	0.21	241.38	406.0	-0.2	-1.0	-0.2	0.36
431.0	0.31	226.57	431.0	-0.3	-1.1	-0.2	0.48
456.0	0.88	203.75	456.0	-0.5	-1.2	-0.1	2.43
481.0	1.33	198.99	481.0	-1.0	-1.4	0.3	1.84
506.0	1.87	197.91	506.0	-1.6	-1.6	0.8	2.16
531.0	2.43	196.76	531.0	-2.5	-1.9	1.5	2.25
556.0	3.27	194.85	555.9	-3.7	-2.2	2.4	3.38
581.0	3.44	194.76	580.9	-5.1	-2.6	3.5	0.68
606.0	3.81	194.74	605.8	-6.7	-3.0	4.7	1.48
631.0	4.05	195.38	630.8	-8.3	-3.4	6.0	0.98
656.0	4.40	194.64	655.7	-10.1	-3.9	7.4	1.42
681.0	4.86	194.73	680.6	-12.0	-4.4	9.0	1.84
706.0	4.88	194.28	705.5	-14.1	-5.0	10.6	0.17
731.0	4.96	194.99	730.4	-16.2	-5.5	12.2	0.40
756.0	4.97	194.35	755.4	-18.3	-6.1	13.9	0.23
781.0	4.98	194.02	780.3	-20.4	-6.6	15.6	0.12
806.0	5.01	194.67	805.2	-22.5	-7.1	17.2	0.26
831.0	4.97	192.46	830.1	-24.6	-7.6	18.9	0.79
856.0	4.81	192.93	855.0	-26.7	-8.1	20.6	0.66
881.0	4.70	192.52	879.9	-28.7	-8.6	22.2	0.46
906.0	4.45	192.52	904.8	-30.6	-9.0	23.8	1.00
931.0	4.12	192.25	929.7	-32.5	-9.4	25.3	1.32
956.0	3.99	192.01	954.7	-34.2	-9.8	26.7	0.52
981.0	3.91	192.84	979.6	-35.9	-10.1	28.0	0.39
1,006.0	3.79	192.28	1,004.6	-37.5	-10.5	29.4	0.50
1,031.0	3.60	193.71	1,029.5	-39.1	-10.9	30.6	0.84
1,056.0	3.38	194.57	1,054.5	-40.6	-11.2	31.8	0.90
1,081.0	3.26	194.36	1,079.4	-42.0	-11.6	32.9	0.48
1,106.0	3.15	195.48	1,104.4	-43.3	-12.0	34.0	0.51
1,131.0	2.89	194.94	1,129.4	-44.6	-12.3	35.0	1.05
1,156.0	2.76	194.97	1,154.3	-45.8	-12.6	35.9	0.52
1,181.0	2.55	195.44	1,179.3	-46.9	-12.9	36.8	0.84
1,206.0	2.41	196.33	1,204.3	-47.9	-13.2	37.6	0.58
1,231.0	2.16	196.58	1,229.3	-48.9	-13.5	38.3	1.00
1,256.0	2.00	197.81	1,254.2	-49.8	-13.8	39.0	0.66
1,281.0	1.96	196.82	1,279.2	-50.6	-14.0	39.6	0.21
1,306.0	1.77	198.73	1,304.2	-51.4	-14.3	40.2	0.80
1,331.0	1.68	196.14	1,329.2	-52.1	-14.5	40.8	0.48
1,356.0	1.65	198.68	1,354.2	-52.8	-14.7	41.3	0.32
1,381.0	1.47	199.58	1,379.2	-53.4	-14.9	41.8	0.73
1,406.0	1.29	179.99	1,404.2	-54.0	-15.0	42.3	2.01
1,431.0	1.19	200.39	1,429.2	-54.5	-15.1	42.7	1.80

RECEIVED

JUL 20 2015



LOGICAL SURVEY
MORGANTOWN, WV

EOW Completion Report



Company: Antero
Project: Doddridge County WV
Site: Robert Williams Pad: Leggett/ Pike Pad/James/M
Well: McGee Unit 2H
Wellbore: Original Wellpath
Design: As Drilled

Local Co-ordinate Reference: Well McGee Unit 2H
TVD Reference: Precision 523: GL 990' + KB 19' @ 1009.0usft
MD Reference: Precision 523: GL 990' + KB 19' @ 1009.0usft
North Reference: Grid
Survey Calculation Method: Minimum Curvature
Database: Oklahoma District

Survey

MD (usft)	Inc (°)	Azi (azimuth) (°)	TVD (usft)	N/S (usft)	E/W (usft)	V. Sec (usft)	DLeg (°/100usft)
1,456.0	1.06	199.52	1,454.2	-55.0	-15.3	43.1	0.52
1,481.0	0.88	201.91	1,479.2	-55.4	-15.5	43.4	0.74
1,506.0	0.78	199.48	1,504.2	-55.7	-15.6	43.6	0.42
1,531.0	0.75	201.37	1,529.2	-56.0	-15.7	43.8	0.16
1,556.0	0.63	205.43	1,554.1	-56.3	-15.8	44.0	0.52
1,581.0	0.66	200.06	1,579.1	-56.6	-15.9	44.2	0.27
1,606.0	0.66	205.85	1,604.1	-56.8	-16.0	44.4	0.27
1,631.0	0.55	203.78	1,629.1	-57.1	-16.2	44.6	0.45
1,656.0	0.45	207.35	1,654.1	-57.3	-16.2	44.7	0.42
1,681.0	0.37	212.52	1,679.1	-57.4	-16.3	44.8	0.35
1,706.0	0.43	208.31	1,704.1	-57.6	-16.4	44.9	0.27
1,731.0	0.45	202.68	1,729.1	-57.7	-16.5	45.0	0.19
1,756.0	0.51	198.64	1,754.1	-57.9	-16.6	45.2	0.28
1,781.0	0.51	196.82	1,779.1	-58.1	-16.6	45.3	0.06
1,806.0	0.48	202.35	1,804.1	-58.4	-16.7	45.5	0.23
1,831.0	0.49	200.44	1,829.1	-58.5	-16.8	45.6	0.08
1,856.0	0.49	198.05	1,854.1	-58.8	-16.9	45.8	0.08
1,881.0	0.44	204.74	1,879.1	-58.9	-16.9	45.9	0.29
1,906.0	0.43	203.71	1,904.1	-59.1	-17.0	46.1	0.05
1,931.0	0.42	204.19	1,929.1	-59.3	-17.1	46.2	0.04
1,956.0	0.46	207.63	1,954.1	-59.5	-17.2	46.3	0.19
1,981.0	0.51	195.34	1,979.1	-59.7	-17.3	46.4	0.46
2,006.0	0.33	197.26	2,004.1	-59.8	-17.3	46.6	0.72
2,031.0	0.29	196.89	2,029.1	-60.0	-17.3	46.7	0.16
2,056.0	0.34	194.16	2,054.1	-60.1	-17.4	46.8	0.21
2,081.0	0.46	192.77	2,079.1	-60.3	-17.4	46.9	0.48
2,106.0	0.26	185.36	2,104.1	-60.4	-17.4	47.0	0.82
2,131.0	0.24	204.73	2,129.1	-60.5	-17.5	47.1	0.35
2,156.0	0.34	192.71	2,154.1	-60.6	-17.5	47.2	0.47
2,181.0	0.34	185.49	2,179.1	-60.8	-17.5	47.3	0.17
2,206.0	0.27	186.17	2,204.1	-60.9	-17.5	47.5	0.28
2,231.0	0.29	185.84	2,229.1	-61.0	-17.6	47.6	0.08
2,256.0	0.36	173.96	2,254.1	-61.2	-17.6	47.7	0.39
2,281.0	0.37	184.63	2,279.1	-61.3	-17.6	47.8	0.27
2,306.0	0.25	185.29	2,304.1	-61.5	-17.6	47.9	0.48
2,331.0	0.32	200.54	2,329.1	-61.6	-17.6	48.0	0.41
2,356.0	0.38	197.26	2,354.1	-61.7	-17.6	48.2	0.25
2,381.0	0.42	187.92	2,379.1	-61.9	-17.7	48.3	0.31
2,406.0	0.46	195.61	2,404.1	-62.1	-17.7	48.4	0.28
2,431.0	0.47	183.25	2,429.1	-62.3	-17.8	48.6	0.40
2,456.0	0.39	195.01	2,454.1	-62.5	-17.8	48.8	0.47
2,481.0	0.43	177.32	2,479.1	-62.7	-17.8	48.9	0.53
2,506.0	0.42	193.02	2,504.1	-62.8	-17.8	49.1	0.47
2,531.0	0.40	195.01	2,529.1	-63.0	-17.9	49.2	0.10
2,556.0	0.40	189.11	2,554.1	-63.2	-17.9	49.3	0.16

JUL 20 2015



EOW Completion Report



Company: Antero	Local Co-ordinate Reference: Well McGee Unit 2H
Project: Doddridge County WV	TVD Reference: Precision 523: GL 990' + KB 19' @ 1009.0usft
Site: Robert Williams Pad: Leggett/ Pike Pad/James/M	MD Reference: Precision 523: GL 990' + KB 19' @ 1009.0usft
Well: McGee Unit 2H	North Reference: Grid
Wellbore: Original Wellpath	Survey Calculation Method: Minimum Curvature
Design: As Drilled	Database: Oklahoma District

Survey

MD (usft)	Inc (°)	Azi (azimuth) (°)	TVD (usft)	N/S (usft)	E/W (usft)	V. Sec (usft)	DLeg (°/100usft)
2,581.0	0.41	203.80	2,579.1	-63.3	-17.9	49.5	0.42
2,606.0	0.39	206.27	2,604.1	-63.5	-18.0	49.6	0.11
2,631.0	0.40	205.72	2,629.1	-63.7	-18.1	49.7	0.04
2,656.0	0.41	200.68	2,654.1	-63.8	-18.2	49.8	0.15
2,681.0	0.43	195.77	2,679.1	-64.0	-18.2	49.9	0.16
2,706.0	0.41	213.70	2,704.1	-64.2	-18.3	50.1	0.53
2,731.0	0.41	211.64	2,729.1	-64.3	-18.4	50.2	0.06
2,756.0	0.39	205.53	2,754.1	-64.5	-18.5	50.3	0.19
2,781.0	0.38	220.91	2,779.1	-64.6	-18.6	50.3	0.41
2,806.0	0.39	213.54	2,804.1	-64.7	-18.7	50.4	0.20
2,831.0	0.37	214.61	2,829.1	-64.9	-18.8	50.5	0.08
2,856.0	0.36	216.67	2,854.1	-65.0	-18.9	50.6	0.07
2,881.0	0.34	220.49	2,879.1	-65.1	-19.0	50.7	0.12
2,906.0	0.37	227.42	2,904.1	-65.2	-19.1	50.7	0.21
2,931.0	0.40	222.85	2,929.1	-65.4	-19.2	50.8	0.17
2,956.0	0.34	219.80	2,954.1	-65.5	-19.3	50.8	0.25
2,981.0	0.39	225.68	2,979.1	-65.6	-19.4	50.9	0.25
3,006.0	0.42	231.55	3,004.1	-65.7	-19.5	50.9	0.20
3,031.0	0.40	221.67	3,029.1	-65.8	-19.7	51.0	0.29
3,056.0	0.42	222.41	3,054.1	-66.0	-19.8	51.1	0.08
3,081.0	0.37	222.57	3,079.1	-66.1	-19.9	51.1	0.20
3,106.0	0.40	226.01	3,104.1	-66.2	-20.0	51.2	0.15
3,131.0	0.34	219.21	3,129.1	-66.3	-20.1	51.2	0.30
3,156.0	0.34	222.14	3,154.1	-66.4	-20.2	51.3	0.07
3,181.0	0.35	217.38	3,179.1	-66.6	-20.3	51.4	0.12
3,206.0	0.37	203.14	3,204.1	-66.7	-20.4	51.4	0.37
3,231.0	0.36	212.03	3,229.1	-66.8	-20.5	51.5	0.23
3,256.0	0.36	216.86	3,254.1	-67.0	-20.6	51.6	0.12
3,281.0	0.37	216.92	3,279.1	-67.1	-20.6	51.7	0.04
3,306.0	0.33	216.06	3,304.1	-67.2	-20.7	51.8	0.16
3,331.0	0.30	223.86	3,329.1	-67.3	-20.8	51.8	0.21
3,356.0	0.26	221.18	3,354.1	-67.4	-20.9	51.9	0.17
3,381.0	0.28	216.25	3,379.1	-67.5	-21.0	51.9	0.12
3,406.0	0.31	219.35	3,404.1	-67.6	-21.1	52.0	0.14
3,431.0	0.34	226.76	3,429.1	-67.7	-21.2	52.0	0.21
3,456.0	0.32	224.26	3,454.1	-67.8	-21.3	52.1	0.10
3,481.0	0.28	218.11	3,479.1	-67.9	-21.3	52.1	0.21
3,506.0	0.31	210.64	3,504.1	-68.0	-21.4	52.2	0.19
3,531.0	0.31	222.82	3,529.1	-68.1	-21.5	52.3	0.26
3,556.0	0.31	228.22	3,554.1	-68.2	-21.6	52.3	0.12
3,581.0	0.31	231.26	3,579.1	-68.3	-21.7	52.3	0.07
3,606.0	0.26	229.92	3,604.1	-68.4	-21.8	52.4	0.20
3,631.0	0.27	217.10	3,629.1	-68.5	-21.9	52.4	0.24
3,656.0	0.25	214.60	3,654.1	-68.6	-21.9	52.5	0.09

RECEIVED

JUL 20 2015



EOW Completion Report



Company: Antero	Local Co-ordinate Reference: Well McGee Unit 2H
Project: Doddridge County WV	TVD Reference: Precision 523: GL 990' + KB 19' @ 1009.0usft
Site: Robert Williams Pad: Leggett/ Pike Pad/James/M	MD Reference: Precision 523: GL 990' + KB 19' @ 1009.0usft
Well: McGee Unit 2H	North Reference: Grid
Wellbore: Original Wellpath	Survey Calculation Method: Minimum Curvature
Design: As Drilled	Database: Oklahoma District

Survey

MD (usft)	Inc (°)	Azi (azimuth) (°)	TVD (usft)	N/S (usft)	E/W (usft)	V. Sec (usft)	DLeg (°/100usft)
3,681.0	0.25	208.75	3,679.1	-68.6	-22.0	52.5	0.10
3,706.0	0.23	223.18	3,704.1	-68.7	-22.1	52.6	0.25
3,731.0	0.22	238.23	3,729.1	-68.8	-22.1	52.6	0.24
3,756.0	0.17	222.96	3,754.1	-68.8	-22.2	52.6	0.29
3,781.0	0.20	229.29	3,779.1	-68.9	-22.3	52.6	0.15
3,806.0	0.18	243.86	3,804.1	-68.9	-22.3	52.7	0.21
3,831.0	0.15	235.12	3,829.1	-69.0	-22.4	52.7	0.16
3,856.0	0.12	211.76	3,854.1	-69.0	-22.4	52.7	0.25
3,881.0	0.08	266.54	3,879.1	-69.0	-22.5	52.7	0.39
3,906.0	0.14	266.38	3,904.1	-69.0	-22.5	52.7	0.24
3,931.0	0.12	278.75	3,929.1	-69.0	-22.6	52.6	0.14
3,956.0	0.16	331.96	3,954.1	-69.0	-22.6	52.6	0.52
3,981.0	0.19	16.61	3,979.1	-68.9	-22.6	52.5	0.54
4,006.0	0.22	15.23	4,004.1	-68.9	-22.6	52.5	0.12
4,031.0	0.26	8.02	4,029.1	-68.8	-22.6	52.4	0.20
4,056.0	0.29	22.88	4,054.1	-68.6	-22.5	52.3	0.31
4,081.0	0.40	38.85	4,079.1	-68.5	-22.5	52.2	0.58
4,106.0	0.34	24.12	4,104.1	-68.4	-22.4	52.1	0.45
4,131.0	0.43	38.87	4,129.1	-68.2	-22.3	52.0	0.53
4,156.0	0.48	53.64	4,154.1	-68.1	-22.1	52.0	0.51
4,181.0	0.53	46.32	4,179.1	-68.0	-22.0	51.9	0.33
4,206.0	0.53	52.02	4,204.1	-67.8	-21.8	51.9	0.21
4,231.0	0.63	53.31	4,229.1	-67.7	-21.6	51.8	0.40
4,256.0	0.61	54.52	4,254.1	-67.5	-21.4	51.8	0.10
4,281.0	0.63	54.20	4,279.1	-67.3	-21.2	51.7	0.08
4,306.0	0.63	57.84	4,304.1	-67.2	-20.9	51.7	0.16
4,331.0	0.72	60.94	4,329.1	-67.0	-20.7	51.6	0.39
4,356.0	0.63	51.04	4,354.1	-66.9	-20.4	51.6	0.59
4,381.0	0.61	47.88	4,379.1	-66.7	-20.2	51.5	0.16
4,406.0	0.60	56.66	4,404.1	-66.5	-20.0	51.5	0.37
4,431.0	0.65	53.08	4,429.1	-66.4	-19.8	51.4	0.25
4,456.0	0.70	65.93	4,454.1	-66.2	-19.5	51.4	0.64
4,481.0	0.68	72.89	4,479.1	-66.1	-19.3	51.4	0.34
4,506.0	0.64	75.63	4,504.1	-66.0	-19.0	51.5	0.20
4,531.0	0.67	79.45	4,529.1	-66.0	-18.7	51.5	0.21
4,556.0	0.62	86.58	4,554.1	-65.9	-18.4	51.6	0.38
4,581.0	0.62	86.23	4,579.1	-65.9	-18.2	51.7	0.02
4,606.0	0.62	87.95	4,604.1	-65.9	-17.9	51.8	0.07
4,631.0	0.66	91.00	4,629.1	-65.9	-17.6	51.9	0.21
4,656.0	0.61	86.90	4,654.1	-65.9	-17.3	52.1	0.27
4,681.0	0.50	86.70	4,679.1	-65.9	-17.1	52.2	0.44
4,706.0	0.49	92.65	4,704.1	-65.9	-16.9	52.2	0.21
4,731.0	0.33	100.89	4,729.1	-65.9	-16.7	52.3	0.68
4,756.0	0.25	83.20	4,754.1	-65.9	-16.6	52.4	0.48

RECEIVED
JUL 20 2015



WV GEOLOGICAL SURVEY
ORGAN TOWN, WV

EOW Completion Report



Company: Antero
Project: Doddridge County WV
Site: Robert Williams Pad: Leggett/ Pike Pad/James/M
Well: McGee Unit 2H
Wellbore: Original Wellpath
Design: As Drilled

Local Co-ordinate Reference: Well McGee Unit 2H
TVD Reference: Precision 523: GL 990' + KB 19' @ 1009.0usft
MD Reference: Precision 523: GL 990' + KB 19' @ 1009.0usft
North Reference: Grid
Survey Calculation Method: Minimum Curvature
Database: Oklahoma District

Survey

MD (usft)	Inc (°)	Azi (azimuth) (°)	TVD (usft)	N/S (usft)	E/W (usft)	V. Sec (usft)	DLeg (°/100usft)
4,781.0	0.24	107.03	4,779.1	-65.9	-16.5	52.5	0.41
4,806.0	0.25	103.31	4,804.1	-66.0	-16.4	52.5	0.08
4,831.0	0.13	111.73	4,829.1	-66.0	-16.3	52.6	0.49
4,856.0	0.16	129.92	4,854.1	-66.0	-16.2	52.6	0.22
4,881.0	0.05	119.30	4,879.1	-66.0	-16.2	52.7	0.44
4,906.0	0.04	187.07	4,904.1	-66.1	-16.2	52.7	0.20
4,931.0	0.10	130.36	4,929.1	-66.1	-16.2	52.7	0.34
4,956.0	0.07	187.58	4,954.1	-66.1	-16.2	52.7	0.34
4,981.0	0.12	213.81	4,979.1	-66.1	-16.2	52.8	0.26
5,006.0	0.10	170.66	5,004.1	-66.2	-16.2	52.8	0.33
5,031.0	0.11	204.03	5,029.1	-66.2	-16.2	52.8	0.24
5,056.0	0.15	165.71	5,054.1	-66.3	-16.2	52.9	0.37
5,081.0	0.15	213.66	5,079.1	-66.3	-16.2	52.9	0.49
5,106.0	0.18	181.84	5,104.1	-66.4	-16.2	53.0	0.38
5,131.0	0.27	166.06	5,129.1	-66.5	-16.2	53.1	0.43
5,156.0	0.29	200.27	5,154.1	-66.6	-16.2	53.2	0.66
5,181.0	0.28	183.35	5,179.1	-66.7	-16.2	53.3	0.34
5,206.0	0.36	155.75	5,204.1	-66.9	-16.2	53.4	0.69
5,231.0	0.41	156.10	5,229.1	-67.0	-16.1	53.6	0.20
5,256.0	0.50	155.30	5,254.1	-67.2	-16.1	53.8	0.36
5,281.0	0.40	163.24	5,279.1	-67.4	-16.0	54.0	0.47
5,306.0	0.26	164.51	5,304.1	-67.5	-16.0	54.1	0.56
5,331.0	0.37	158.54	5,329.1	-67.7	-15.9	54.3	0.46
5,356.0	0.41	147.70	5,354.1	-67.8	-15.8	54.4	0.33
5,381.0	0.52	154.55	5,379.1	-68.0	-15.7	54.6	0.49
5,406.0	0.43	167.12	5,404.1	-68.2	-15.7	54.8	0.55
5,431.0	0.48	167.34	5,429.1	-68.4	-15.6	55.0	0.20
5,456.0	0.47	159.03	5,454.1	-68.6	-15.6	55.2	0.28
5,481.0	0.55	165.88	5,479.1	-68.8	-15.5	55.4	0.40
5,506.0	0.58	163.27	5,504.1	-69.0	-15.4	55.7	0.16
5,531.0	0.71	162.86	5,529.0	-69.3	-15.3	56.0	0.52
5,556.0	0.70	155.55	5,554.0	-69.6	-15.2	56.3	0.36
5,581.0	0.72	156.38	5,579.0	-69.9	-15.1	56.6	0.09
5,606.0	0.76	165.68	5,604.0	-70.2	-15.0	56.9	0.51
5,631.0	0.78	165.78	5,629.0	-70.5	-14.9	57.2	0.08
5,656.0	0.81	158.59	5,654.0	-70.8	-14.8	57.6	0.42
5,681.0	0.77	161.43	5,679.0	-71.1	-14.7	57.9	0.22
5,706.0	0.73	168.72	5,704.0	-71.5	-14.6	58.2	0.41
5,731.0	0.89	161.72	5,729.0	-71.8	-14.5	58.6	0.75
5,746.0	0.82	159.36	5,744.0	-72.0	-14.4	58.8	0.52
5,759.0	0.91	158.43	5,757.0	-72.2	-14.4	59.0	0.70
5,789.0	0.89	174.27	5,787.0	-72.7	-14.3	59.5	0.83
5,819.0	0.81	159.53	5,817.0	-73.1	-14.2	59.9	0.77
5,849.0	1.75	89.70	5,847.0	-73.3	-13.6	60.3	5.52



WV GEOLOGICAL SURVEY
 RECEIVED
 JUL 20 2015
 MARTINSBURG, WV

EOW Completion Report



Company: Antero
Project: Doddridge County WV
Site: Robert Williams Pad: Leggett/ Pike Pad/James/M
Well: McGee Unit 2H
Wellbore: Original Wellpath
Design: As Drilled

Local Co-ordinate Reference: Well McGee Unit 2H
TVD Reference: Precision 523: GL 990' + KB 19' @ 1009.0usft
MD Reference: Precision 523: GL 990' + KB 19' @ 1009.0usft
North Reference: Grid
Survey Calculation Method: Minimum Curvature
Database: Oklahoma District

Survey

MD (usft)	Inc (°)	Azi (azimuth) (°)	TVD (usft)	N/S (usft)	E/W (usft)	V. Sec (usft)	DLeg (°/100usft)
5,879.0	5.55	70.77	5,876.9	-72.8	-11.8	60.7	13.12
5,909.0	9.12	68.02	5,906.7	-71.4	-8.2	61.0	11.95
5,938.0	12.75	67.49	5,935.2	-69.3	-3.1	61.3	12.52
5,968.0	16.64	67.50	5,964.2	-66.4	3.9	61.7	12.97
5,998.0	19.73	68.78	5,992.7	-63.0	12.6	62.2	10.39
6,028.0	22.50	69.95	6,020.7	-59.2	22.7	63.2	9.34
6,058.0	25.47	70.33	6,048.1	-55.0	34.2	64.4	9.91
6,088.0	28.69	71.33	6,074.8	-50.5	47.1	65.9	10.84
6,117.0	32.07	71.90	6,099.8	-45.9	61.0	67.7	11.70
6,147.0	35.64	72.73	6,124.7	-40.8	76.9	69.9	12.00
6,177.0	38.79	73.99	6,148.6	-35.7	94.3	72.7	10.80
6,207.0	40.80	74.71	6,171.6	-30.5	112.8	76.0	6.87
6,237.0	41.80	76.18	6,194.2	-25.5	131.9	79.7	4.64
6,267.0	43.24	81.74	6,216.3	-21.6	151.8	84.8	13.41
6,297.0	44.54	87.80	6,237.9	-19.8	172.5	92.0	14.65
6,327.0	45.64	92.67	6,259.1	-19.9	193.7	101.2	12.06
6,357.0	46.36	96.02	6,280.0	-21.5	215.3	111.9	8.38
6,386.0	47.31	99.35	6,299.8	-24.3	236.2	123.5	8.99
6,416.0	49.39	101.82	6,319.7	-28.4	258.2	136.7	9.27
6,423.0	49.93	102.52	6,324.3	-29.6	263.5	140.0	10.84
Middlesex							
6,446.0	51.72	104.76	6,338.8	-33.8	280.8	151.2	10.84
6,476.0	53.48	107.38	6,357.0	-40.4	303.7	167.0	9.09
6,506.0	55.55	110.66	6,374.4	-48.4	326.8	184.1	11.26
6,536.0	56.52	114.91	6,391.2	-58.0	349.7	202.7	12.19
6,565.0	57.47	118.50	6,407.0	-68.9	371.4	221.9	10.89
6,595.0	58.79	122.26	6,422.8	-81.8	393.4	243.0	11.52
6,625.0	61.08	125.67	6,437.9	-96.3	414.9	265.3	12.45
6,641.0	62.53	127.90	6,445.4	-104.8	426.2	277.8	15.26
Burkett							
6,655.0	63.83	129.80	6,451.8	-112.6	435.9	289.1	15.26
6,685.0	66.51	133.58	6,464.4	-130.7	456.2	314.1	14.51
6,704.0	67.91	135.31	6,471.7	-143.0	468.7	330.6	11.18
Tully							
6,715.0	68.73	136.30	6,475.8	-150.3	475.9	340.3	11.18
6,745.0	70.69	138.52	6,486.2	-171.0	494.9	367.2	9.53
6,775.0	71.90	140.97	6,495.8	-192.7	513.3	394.6	8.72
6,785.0	72.80	141.74	6,498.8	-200.1	519.2	403.9	11.59
Marcellus							
6,805.0	74.60	143.26	6,504.4	-215.4	530.9	422.7	11.59
6,834.0	78.07	145.89	6,511.3	-238.3	547.2	450.4	14.86
6,864.0	81.65	148.75	6,516.6	-263.2	563.2	479.7	15.18
6,895.0	84.73	151.52	6,520.3	-289.9	578.5	510.4	13.32
6,925.0	87.14	154.53	6,522.4	-316.5	592.1	540.3	12.83
6,950.0	88.22	155.87	6,523.4	-339.2	602.5	565.3	6.88

RECEIVED

JUL 20 2015



EOW Completion Report



Company: Antero	Local Co-ordinate Reference: Well McGee Unit 2H
Project: Doddridge County WV	TVD Reference: Precision 523: GL 990' + KB 19' @ 1009.0usft
Site: Robert Williams Pad: Leggett/ Pike Pad/James/M	MD Reference: Precision 523: GL 990' + KB 19' @ 1009.0usft
Well: McGee Unit 2H	North Reference: Grid
Wellbore: Original Wellpath	Survey Calculation Method: Minimum Curvature
Design: As Drilled	Database: Oklahoma District

MD (usft)	Inc (°)	Azi (azimuth) (°)	TVD (usft)	N/S (usft)	E/W (usft)	V. Sec (usft)	DLeg (°/100usft)
6,970.0	88.25	156.22	6,524.0	-357.5	610.6	585.3	1.76
7,060.0	90.57	156.34	6,524.9	-439.9	646.8	675.2	2.58
7,149.0	91.08	154.69	6,523.7	-520.9	683.7	764.2	1.94
7,239.0	91.31	154.40	6,521.8	-602.1	722.4	854.2	0.41
7,328.0	90.07	153.27	6,520.7	-682.0	761.6	943.2	1.88
7,418.0	90.07	154.33	6,520.6	-762.7	801.4	1,033.1	1.18
7,508.0	90.24	154.03	6,520.4	-843.7	840.6	1,123.1	0.38
7,597.0	89.83	154.38	6,520.3	-923.9	879.3	1,212.1	0.61
7,687.0	89.26	155.31	6,521.0	-1,005.3	917.6	1,302.1	1.21
7,776.0	89.93	154.97	6,521.6	-1,086.1	955.0	1,391.1	0.84
7,866.0	89.70	154.27	6,521.9	-1,167.4	993.6	1,481.1	0.82
7,956.0	90.10	154.33	6,522.1	-1,248.5	1,032.6	1,571.1	0.45
8,045.0	90.34	154.27	6,521.7	-1,328.7	1,071.2	1,660.1	0.28
8,135.0	90.57	154.21	6,521.0	-1,409.7	1,110.3	1,750.1	0.26
8,224.0	89.56	154.78	6,520.9	-1,490.1	1,148.6	1,839.1	1.30
8,314.0	89.40	155.30	6,521.8	-1,571.7	1,186.6	1,929.1	0.60
8,403.0	89.70	154.99	6,522.4	-1,652.4	1,224.0	2,018.1	0.48
8,493.0	89.76	155.21	6,522.9	-1,734.0	1,261.9	2,108.1	0.25
8,582.0	89.33	153.48	6,523.6	-1,814.3	1,300.4	2,197.1	2.00
8,672.0	89.33	153.33	6,524.6	-1,894.7	1,340.7	2,287.1	0.17
8,761.0	89.87	153.41	6,525.3	-1,974.3	1,380.6	2,376.0	0.61
8,851.0	89.60	155.24	6,525.7	-2,055.4	1,419.6	2,466.0	2.06
8,940.0	89.73	154.80	6,526.2	-2,136.1	1,457.2	2,555.0	0.52
9,030.0	89.73	153.96	6,526.6	-2,217.2	1,496.1	2,645.0	0.93
9,119.0	89.56	155.34	6,527.2	-2,297.6	1,534.2	2,734.0	1.56
9,209.0	89.93	154.90	6,527.6	-2,379.3	1,572.1	2,824.0	0.64
9,298.0	90.00	155.34	6,527.6	-2,460.0	1,609.5	2,913.0	0.50
9,388.0	89.73	153.83	6,527.8	-2,541.3	1,648.1	3,003.0	1.70
9,477.0	89.93	153.86	6,528.1	-2,621.2	1,687.4	3,092.0	0.23
9,571.0	89.23	154.24	6,528.8	-2,705.7	1,728.5	3,186.0	0.85
9,665.0	88.92	154.41	6,530.3	-2,790.4	1,769.2	3,280.0	0.38
9,759.0	89.29	154.21	6,531.8	-2,875.1	1,810.0	3,374.0	0.45
9,853.0	89.66	155.53	6,532.6	-2,960.2	1,849.9	3,468.0	1.46
9,947.0	89.97	155.30	6,532.9	-3,045.7	1,889.0	3,562.0	0.41
10,041.0	89.16	155.52	6,533.7	-3,131.2	1,928.1	3,655.9	0.89
10,134.0	89.50	154.73	6,534.7	-3,215.5	1,967.2	3,748.9	0.92
10,229.0	89.76	155.51	6,535.4	-3,301.7	2,007.2	3,843.9	0.87
10,322.0	90.37	153.68	6,535.2	-3,385.7	2,047.1	3,936.9	2.07
10,416.0	90.77	153.72	6,534.3	-3,470.0	2,088.7	4,030.9	0.43
10,506.0	90.34	152.98	6,533.4	-3,550.4	2,129.1	4,120.9	0.95
10,595.0	89.26	154.64	6,533.8	-3,630.3	2,168.4	4,209.9	2.23
10,685.0	89.50	154.44	6,534.7	-3,711.5	2,207.0	4,299.9	0.35
10,774.0	90.20	154.52	6,535.0	-3,791.9	2,245.4	4,388.9	0.79
10,864.0	90.47	155.84	6,534.4	-3,873.5	2,283.2	4,478.9	1.50

JUL 20 2015



EOW Completion Report



Company: Antero
Project: Doddridge County WV
Site: Robert Williams Pad: Leggett/ Pike Pad/James/M
Well: McGee Unit 2H
Wellbore: Original Wellpath
Design: As Drilled

Local Co-ordinate Reference: Well McGee Unit 2H
TVD Reference: Precision 523: GL 990' + KB 19' @ 1009.0usft
MD Reference: Precision 523: GL 990' + KB 19' @ 1009.0usft
North Reference: Grid
Survey Calculation Method: Minimum Curvature
Database: Oklahoma District

Survey

MD (usft)	Inc (°)	Azi (azimuth) (°)	TVD (usft)	N/S (usft)	E/W (usft)	V. Sec (usft)	DLeg (°/100usft)
10,953.0	89.39	154.08	6,534.5	-3,954.2	2,320.8	4,567.8	2.32
11,043.0	88.76	152.79	6,536.0	-4,034.7	2,361.1	4,657.8	1.59
11,133.0	90.10	154.99	6,536.9	-4,115.5	2,400.7	4,747.8	2.86
11,222.0	90.17	155.28	6,536.7	-4,196.2	2,438.1	4,836.8	0.34
11,312.0	90.30	154.48	6,536.3	-4,277.7	2,476.3	4,926.8	0.90
11,401.0	90.47	153.93	6,535.7	-4,357.8	2,515.0	5,015.8	0.65
11,490.0	89.29	156.31	6,535.9	-4,438.6	2,552.5	5,104.8	2.98
11,580.0	89.13	156.45	6,537.1	-4,521.0	2,588.5	5,194.7	0.24
11,669.0	89.97	154.98	6,537.8	-4,602.1	2,625.1	5,283.7	1.90
11,759.0	88.26	153.70	6,539.2	-4,683.2	2,664.1	5,373.7	2.37
11,849.0	89.46	153.64	6,541.0	-4,763.9	2,704.0	5,463.6	1.33
11,938.0	89.43	154.16	6,541.9	-4,843.8	2,743.2	5,552.6	0.59
12,027.0	90.07	153.57	6,542.3	-4,923.7	2,782.4	5,641.6	0.98
12,117.0	89.76	154.83	6,542.4	-5,004.7	2,821.5	5,731.6	1.44
12,207.0	90.30	154.55	6,542.4	-5,086.1	2,860.0	5,821.6	0.68
12,296.0	89.63	156.30	6,542.4	-5,167.0	2,897.0	5,910.6	2.11
12,386.0	90.37	156.41	6,542.4	-5,249.5	2,933.1	6,000.6	0.83
12,475.0	90.64	153.93	6,541.6	-5,330.2	2,970.5	6,089.5	2.80
12,565.0	91.21	153.75	6,540.2	-5,411.0	3,010.2	6,179.5	0.66
12,655.0	91.38	153.15	6,538.1	-5,491.5	3,050.4	6,269.5	0.69
12,744.0	90.50	154.96	6,536.7	-5,571.5	3,089.3	6,358.5	2.26
12,834.0	89.03	154.60	6,537.0	-5,652.9	3,127.7	6,448.5	1.68
12,923.0	90.44	156.15	6,537.5	-5,733.8	3,164.7	6,537.5	2.35
13,013.0	89.50	153.78	6,537.5	-5,815.4	3,202.8	6,627.4	2.83
13,102.0	88.82	154.01	6,538.8	-5,895.3	3,242.0	6,716.4	0.81
13,191.0	89.09	153.19	6,540.4	-5,975.0	3,281.5	6,805.4	0.97
13,281.0	89.26	155.23	6,541.7	-6,056.0	3,320.7	6,895.4	2.27
13,370.0	90.91	154.44	6,541.6	-6,136.6	3,358.5	6,984.4	2.06
13,460.0	89.97	154.24	6,540.9	-6,217.7	3,397.5	7,074.4	1.07
13,549.0	90.97	155.16	6,540.2	-6,298.1	3,435.5	7,163.4	1.53
13,639.0	91.24	156.55	6,538.4	-6,380.2	3,472.4	7,253.3	1.57
13,728.0	89.73	153.61	6,537.7	-6,460.9	3,509.8	7,342.3	3.71
13,817.0	89.09	152.02	6,538.6	-6,540.1	3,550.5	7,431.3	1.93
13,907.0	91.01	151.90	6,538.5	-6,619.5	3,592.8	7,521.2	2.14
13,996.0	90.97	155.58	6,537.0	-6,699.3	3,632.2	7,610.1	4.13
14,086.0	92.21	155.63	6,534.5	-6,781.3	3,669.3	7,700.1	1.38
14,176.0	91.61	155.38	6,531.5	-6,863.1	3,706.6	7,790.0	0.72
14,265.0	92.99	155.87	6,527.9	-6,944.1	3,743.3	7,878.9	1.65
14,355.0	92.05	155.37	6,524.0	-7,026.0	3,780.4	7,968.8	1.18
14,444.0	90.50	153.82	6,522.0	-7,106.4	3,818.6	8,057.8	2.46
14,534.0	90.34	154.39	6,521.3	-7,187.3	3,857.9	8,147.8	0.66
14,623.0	91.31	153.48	6,520.0	-7,267.3	3,897.0	8,236.8	1.49
14,713.0	91.55	152.74	6,517.8	-7,347.5	3,937.7	8,326.7	0.86
14,803.0	90.97	155.05	6,515.8	-7,428.3	3,977.3	8,416.7	2.65

JUL 20 2015



EOW Completion Report



Company:	Antero	Local Co-ordinate Reference:	Well McGee Unit 2H
Project:	Doddridge County WV	TVD Reference:	Precision 523: GL 990' + KB 19' @ 1009.0usft
Site:	Robert Williams Pad: Leggett/ Pike Pad/James/M	MD Reference:	Precision 523: GL 990' + KB 19' @ 1009.0usft
Well:	McGee Unit 2H	North Reference:	Grid
Wellbore:	Original Wellpath	Survey Calculation Method:	Minimum Curvature
Design:	As Drilled	Database:	Oklahoma District

Survey

MD (usft)	Inc (°)	Azi (azimuth) (°)	TVD (usft)	N/S (usft)	E/W (usft)	V. Sec (usft)	DLeg (°/100usft)
14,892.0	90.70	153.34	6,514.5	-7,508.4	4,016.0	8,505.7	1.94
14,982.0	91.08	155.64	6,513.1	-7,589.6	4,054.8	8,595.6	2.59
15,072.0	90.97	155.47	6,511.5	-7,671.5	4,092.0	8,685.6	0.22
15,174.0	90.30	154.75	6,510.4	-7,764.1	4,135.0	8,787.6	0.96
15,228.0	90.30	154.75	6,510.1	-7,812.9	4,158.0	8,841.6	0.00

Design Annotations

Measured Depth (usft)	Vertical Depth (usft)	Local Coordinates		Comment
		+N/-S (usft)	+E/-W (usft)	
6,423.0	6,324.3	-29.6	263.5	Middlesex
6,641.0	6,445.4	-104.8	426.2	Burkett
6,704.0	6,471.7	-143.0	468.7	Tully
6,785.0	6,498.8	-200.1	519.2	Marcellus

Checked By: _____ Approved By: _____ Date: _____