

RECEIVED

JUL 20 2015

WV GEOLOGICAL SURVEY
MORGANTOWN, WV



McGee Unit 1H
Doddridge County WV
Northing: 14248463.93
Easting: 1679267.16
As Drilled

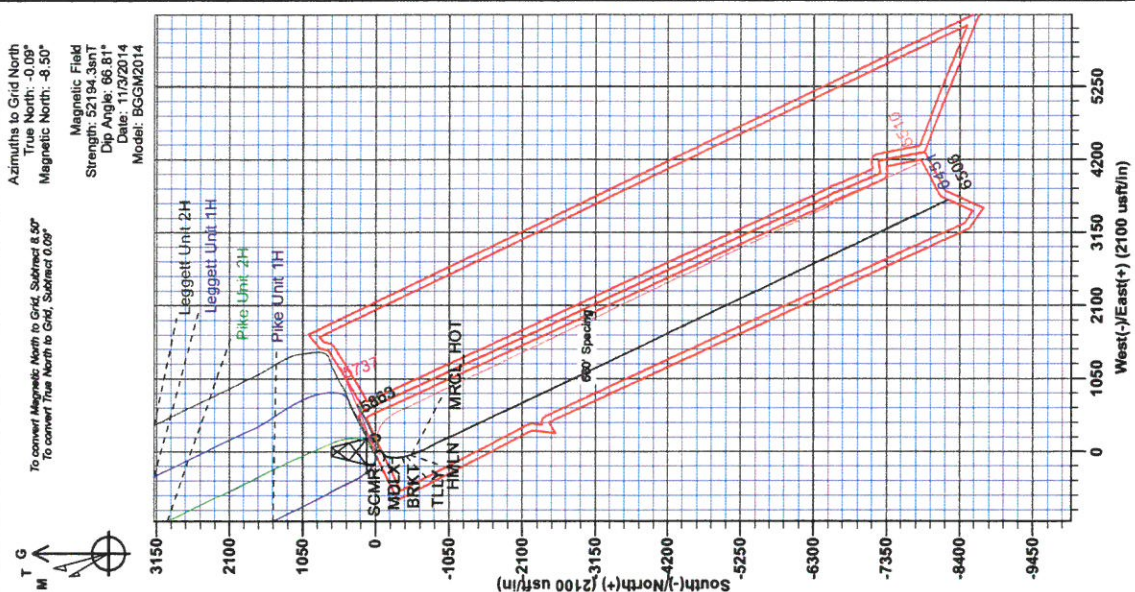
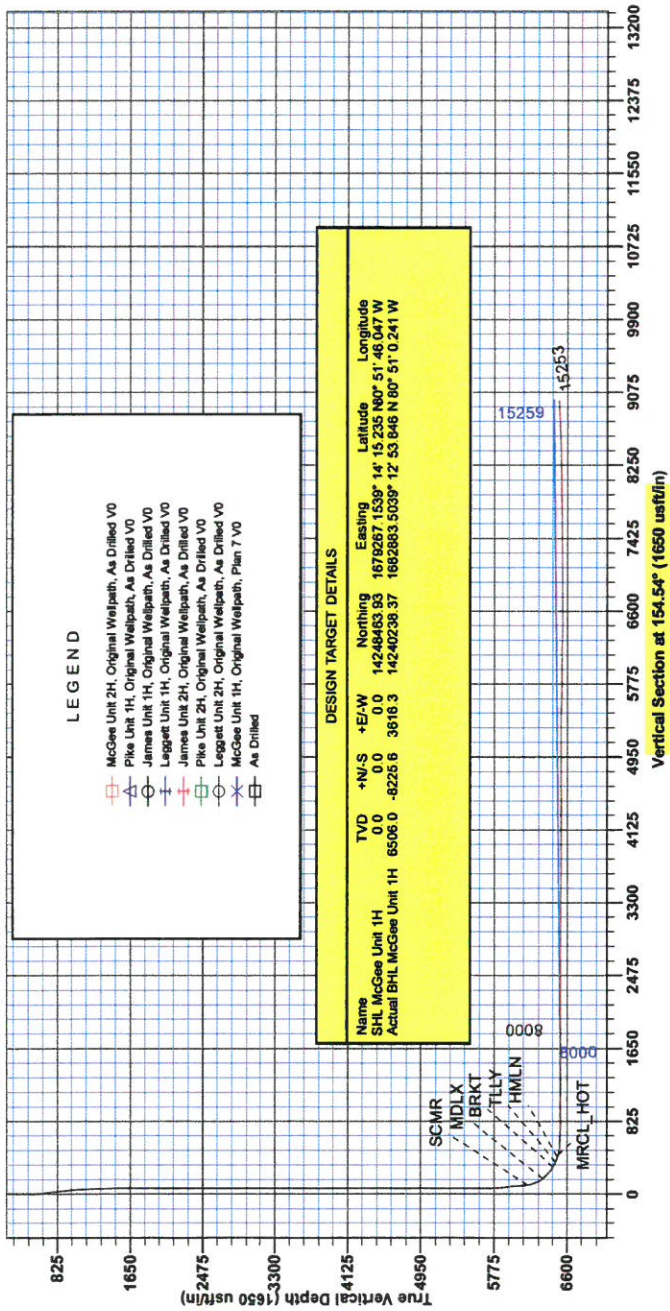


Genie Lightfoot
15:05, February 11 2015
Scientific Drilling
11220 N.W. 10th Street
Yukon, OK 73099

WELL DETAILS		McGee Unit 1H	
Ground Level:	990.0	Latitude	Longitude
+N-S	+E-W	1679267.16	39° 14' 15.235 N 80° 51' 46.047 W
0.0	0.0	14248463.93	

SITE DETAILS:	
Robert Williams Pad:	Leggett/ Pike Pad/James/McGee
Site Centre Northing:	14248467.61
Easting:	1679246.10
Positional Uncertainty:	0.0
Convergence:	0.09
Local North:	Grid

PROJECT DETAILS-Doddridge County WV	
Geoidetic System:	Universal Transverse Mercator (US Survey) Feet)
Datum:	NAD 1927 (NADCON CONUS)
Ellipsoid:	Clarke 1866
Zone:	Zone 17N (84 W to 78 W)
System Datum:	Mean Sea Level





RECEIVED
JUL 20 2015
WV GEOLOGICAL SURVEY
MORGANTOWN, WV

Antero

Doddridge County WV

Robert Williams Pad: Leggett/ Pike Pad/James/McGee

McGee Unit 1H

Original Wellpath

Design: As Drilled

EOW Completion Report

11 February, 2015



JUL 20 2015



WV GEOLOGICAL SURVEY
MORGANTOWN, WV

EOW Completion Report



Company:	Antero	Local Co-ordinate Reference:	Well McGee Unit 1H
Project:	Doddridge County WV	TVD Reference:	Precision 523: GL 990' + KB 19' @ 1009.0usft
Site:	Robert Williams Pad: Leggett/ Pike Pad/James/M	MD Reference:	Precision 523: GL 990' + KB 19' @ 1009.0usft
Well:	McGee Unit 1H	North Reference:	Grid
Wellbore:	Original Wellpath	Survey Calculation Method:	Minimum Curvature
Design:	As Drilled	Database:	Oklahoma District

Project	Doddridge County WV, McClellan District		
Map System:	Universal Transverse Mercator (US Survey Feet)	System Datum:	Mean Sea Level
Geo Datum:	NAD 1927 (NADCON CONUS)		
Map Zone:	Zone 17N (84 W to 78 W)		

Site	Robert Williams Pad: Leggett/ Pike Pad/James/McGee				
Site Position:		Northing:	14,248,467.61 usft	Latitude:	39° 14' 15.272 N
From:	Map	Easting:	1,679,248.10 usft	Longitude:	80° 51' 46.289 W
Position Uncertainty:	0.0 usft	Slot Radius:	13-3/16"	Grid Convergence:	0.09 °

Well	McGee Unit 1H, Marcellus					
Well Position	+N/-S	0.0 usft	Northing:	14,248,463.93 usft	Latitude:	39° 14' 15.235 N
	+E/-W	0.0 usft	Easting:	1,679,267.16 usft	Longitude:	80° 51' 46.047 W
Position Uncertainty	2.0 usft		Wellhead Elevation:	1,009.0 usft	Ground Level:	990.0 usft

Wellbore	Original Wellpath				
-----------------	-------------------	--	--	--	--

Magnetics	Model Name	Sample Date	Declination (°)	Dip Angle (°)	Field Strength (nT)
	BGGM2014	11/3/2014	-8.42	66.81	52,194

Design	As Drilled				
---------------	------------	--	--	--	--

Audit Notes:					
Version:	1.0	Phase:	ACTUAL	Tie On Depth:	0.0
Vertical Section:		Depth From (TVD) (usft)	+N/-S (usft)	+E/-W (usft)	Direction (°)
		0.0	0.0	0.0	154.54

Survey Program	Date 2/11/2015				
From (usft)	To (usft)	Survey (Wellbore)	Tool Name	Description	
31.0	5,706.0	Survey #4 Def KOP Gyro (Original Wellpa	Standard Keeper 104	Standard Wireline Keeper ver 1.0.4	
5,706.0	15,253.0	Survey #5 MWD (Original Wellpath)	SDI MWD	Scientific Drilling Intl. MWD - Standard ver 1.0.1	

MD (usft)	Inc (°)	Azi (azimuth) (°)	TVD (usft)	N/S (usft)	E/W (usft)	V. Sec (usft)	DLeg (°/100usft)
0.0	0.00	0.00	0.0	0.0	0.0	0.0	0.00
31.0	0.03	78.25	31.0	0.0	0.0	0.0	0.10
56.0	0.06	78.25	56.0	0.0	0.0	0.0	0.12
81.0	0.09	78.25	81.0	0.0	0.1	0.0	0.12
106.0	0.11	78.25	106.0	0.0	0.1	0.0	0.08
131.0	0.14	48.57	131.0	0.0	0.1	0.0	0.28
156.0	0.05	87.44	156.0	0.1	0.2	0.0	0.42
181.0	0.11	56.35	181.0	0.1	0.2	0.0	0.29
206.0	0.08	75.94	206.0	0.1	0.2	0.0	0.18
231.0	0.10	63.78	231.0	0.1	0.3	0.0	0.11
256.0	0.09	75.39	256.0	0.1	0.3	0.0	0.09

JUL 20 2015



EOW Completion Report



Company: Antero
Project: Doddridge County WV
Site: Robert Williams Pad: Legget/ Pike Pad/James/M
Well: McGee Unit 1H
Wellbore: Original Wellpath
Design: As Drilled

Local Co-ordinate Reference: Well McGee Unit 1H
TVD Reference: Precision 523: GL 990' + KB 19' @ 1009.0usft
MD Reference: Precision 523: GL 990' + KB 19' @ 1009.0usft
North Reference: Grid
Survey Calculation Method: Minimum Curvature
Database: Oklahoma District

Survey

MD (usft)	Inc (°)	Azi (azimuth) (°)	TVD (usft)	N/S (usft)	E/W (usft)	V. Sec (usft)	DLeg (°/100usft)
281.0	0.08	58.75	281.0	0.1	0.4	0.0	0.11
306.0	0.09	83.89	306.0	0.2	0.4	0.0	0.15
331.0	0.09	93.21	331.0	0.2	0.4	0.0	0.06
356.0	0.04	111.05	356.0	0.1	0.5	0.1	0.21
381.0	0.06	74.15	381.0	0.1	0.5	0.1	0.15
406.0	0.08	101.23	406.0	0.1	0.5	0.1	0.15
431.0	0.07	125.41	431.0	0.1	0.5	0.1	0.13
456.0	0.09	127.64	456.0	0.1	0.6	0.1	0.08
481.0	0.45	134.11	481.0	0.0	0.7	0.2	1.44
506.0	0.95	145.22	506.0	-0.2	0.8	0.5	2.06
531.0	1.68	148.91	531.0	-0.7	1.2	1.1	2.94
556.0	2.78	151.33	556.0	-1.5	1.6	2.1	4.42
581.0	3.81	153.54	580.9	-2.8	2.3	3.5	4.15
606.0	4.45	156.00	605.9	-4.4	3.1	5.3	2.66
631.0	4.91	157.60	630.8	-6.3	3.9	7.4	1.91
656.0	5.39	159.30	655.7	-8.4	4.7	9.6	2.01
681.0	5.80	159.72	680.6	-10.7	5.5	12.0	1.65
706.0	6.07	160.22	705.4	-13.1	6.4	14.6	1.10
731.0	6.18	160.24	730.3	-15.6	7.3	17.3	0.44
756.0	6.21	159.98	755.1	-18.2	8.2	19.9	0.16
781.0	6.27	160.25	780.0	-20.7	9.2	22.6	0.27
806.0	6.27	160.03	804.8	-23.3	10.1	25.4	0.10
831.0	6.33	159.75	829.7	-25.9	11.0	28.1	0.27
856.0	6.34	160.50	854.5	-28.5	12.0	30.8	0.33
881.0	6.28	160.41	879.4	-31.0	12.9	33.6	0.24
906.0	6.18	160.91	904.2	-33.6	13.8	36.3	0.46
931.0	5.72	161.59	929.1	-36.1	14.6	38.8	1.86
956.0	5.41	161.95	954.0	-38.4	15.4	41.2	1.25
981.0	5.18	162.08	978.9	-40.6	16.1	43.5	0.92
1,006.0	4.97	162.38	1,003.8	-42.7	16.8	45.7	0.85
1,031.0	4.28	161.64	1,028.7	-44.6	17.4	47.7	2.77
1,056.0	3.84	161.60	1,053.6	-46.3	17.9	49.5	1.76
1,081.0	3.60	162.09	1,078.6	-47.8	18.5	51.1	0.97
1,106.0	3.36	162.22	1,103.5	-49.2	18.9	52.6	0.96
1,131.0	3.13	161.69	1,128.5	-50.6	19.4	54.0	0.93
1,156.0	2.82	161.10	1,153.5	-51.8	19.8	55.3	1.25
1,181.0	2.48	161.19	1,178.4	-52.9	20.1	56.4	1.36
1,206.0	2.17	162.63	1,203.4	-53.9	20.5	57.4	1.26
1,231.0	1.92	162.58	1,228.4	-54.7	20.7	58.3	1.00
1,256.0	1.84	165.84	1,253.4	-55.5	21.0	59.1	0.53
1,281.0	1.57	164.58	1,278.4	-56.2	21.1	59.9	1.09
1,306.0	1.40	165.38	1,303.4	-56.9	21.3	60.5	0.69
1,331.0	1.22	163.23	1,328.4	-57.4	21.5	61.1	0.75
1,356.0	1.24	164.28	1,353.4	-57.9	21.6	61.6	0.12

JUL 20 2015



EOW Completion Report



Company: Antero
Project: Doddridge County WV
Site: Robert Williams Pad: Leggett/ Pike Pad/James/M
Well: McGee Unit 1H
Wellbore: Original Wellpath
Design: As Drilled

Local Co-ordinate Reference: Well McGee Unit 1H
TVD Reference: Precision 523: GL 990' + KB 19' @ 1009.0usft
MD Reference: Precision 523: GL 990' + KB 19' @ 1009.0usft
North Reference: Grid
Survey Calculation Method: Minimum Curvature
Database: Oklahoma District

Survey

MD (usft)	Inc (°)	Azi (azimuth) (°)	TVD (usft)	N/S (usft)	E/W (usft)	V. Sec (usft)	DLeg (°/100usft)
1,381.0	0.93	160.74	1,378.4	-58.4	21.8	62.1	1.27
1,406.0	0.83	161.62	1,403.3	-58.7	21.9	62.4	0.40
1,431.0	0.74	161.50	1,428.3	-59.1	22.0	62.8	0.36
1,456.0	0.75	163.88	1,453.3	-59.4	22.1	63.1	0.13
1,481.0	0.75	159.20	1,478.3	-59.7	22.2	63.4	0.24
1,506.0	0.74	162.66	1,503.3	-60.0	22.3	63.7	0.18
1,531.0	0.61	164.28	1,528.3	-60.3	22.4	64.0	0.53
1,556.0	0.60	164.29	1,553.3	-60.5	22.4	64.3	0.04
1,581.0	0.52	161.52	1,578.3	-60.8	22.5	64.5	0.34
1,606.0	0.51	164.00	1,603.3	-61.0	22.6	64.8	0.10
1,631.0	0.51	164.99	1,628.3	-61.2	22.6	65.0	0.04
1,656.0	0.51	164.55	1,653.3	-61.4	22.7	65.2	0.02
1,681.0	0.48	163.36	1,678.3	-61.6	22.8	65.4	0.13
1,706.0	0.43	168.70	1,703.3	-61.8	22.8	65.6	0.26
1,731.0	0.30	187.59	1,728.3	-62.0	22.8	65.8	0.70
1,756.0	0.17	210.76	1,753.3	-62.1	22.8	65.8	0.63
1,781.0	0.18	209.35	1,778.3	-62.1	22.8	65.9	0.04
1,806.0	0.17	223.12	1,803.3	-62.2	22.7	65.9	0.17
1,831.0	0.22	213.11	1,828.3	-62.3	22.7	65.9	0.24
1,856.0	0.22	214.60	1,853.3	-62.3	22.6	66.0	0.02
1,881.0	0.19	210.87	1,878.3	-62.4	22.6	66.0	0.13
1,906.0	0.24	209.98	1,903.3	-62.5	22.5	66.1	0.20
1,931.0	0.19	203.04	1,928.3	-62.6	22.5	66.2	0.23
1,956.0	0.21	208.83	1,953.3	-62.7	22.4	66.2	0.11
1,981.0	0.16	219.42	1,978.3	-62.7	22.4	66.3	0.24
2,006.0	0.22	216.99	2,003.3	-62.8	22.3	66.3	0.24
2,031.0	0.21	213.43	2,028.3	-62.9	22.3	66.3	0.07
2,056.0	0.24	211.52	2,053.3	-62.9	22.2	66.4	0.12
2,081.0	0.20	213.98	2,078.3	-63.0	22.2	66.4	0.16
2,106.0	0.21	221.86	2,103.3	-63.1	22.1	66.5	0.12
2,131.0	0.23	210.79	2,128.3	-63.2	22.1	66.5	0.19
2,156.0	0.20	216.23	2,153.3	-63.3	22.0	66.6	0.15
2,181.0	0.19	207.19	2,178.3	-63.3	22.0	66.6	0.13
2,206.0	0.19	214.22	2,203.3	-63.4	21.9	66.7	0.09
2,231.0	0.14	233.21	2,228.3	-63.4	21.9	66.7	0.29
2,256.0	0.14	221.18	2,253.3	-63.5	21.8	66.7	0.12
2,281.0	0.14	227.31	2,278.3	-63.5	21.8	66.7	0.06
2,306.0	0.14	236.37	2,303.3	-63.6	21.7	66.7	0.09
2,331.0	0.17	221.58	2,328.3	-63.6	21.7	66.8	0.20
2,356.0	0.17	231.36	2,353.3	-63.7	21.6	66.8	0.12
2,381.0	0.14	265.33	2,378.3	-63.7	21.6	66.8	0.38
2,406.0	0.16	262.75	2,403.3	-63.7	21.5	66.8	0.08
2,431.0	0.20	273.64	2,428.3	-63.7	21.4	66.7	0.21
2,456.0	0.18	267.29	2,453.3	-63.7	21.4	66.7	0.12
2,481.0	0.20	259.27	2,478.3	-63.7	21.3	66.7	0.13

JUL 20 2015



EOW Completion Report



Company: Antero
Project: Doddridge County WV
Site: Robert Williams Pad: Leggett/ Pike Pad/James/M
Well: McGee Unit 1H
Wellbore: Original Wellpath
Design: As Drilled

Local Co-ordinate Reference: Well McGee Unit 1H
TVD Reference: Precision 523: GL 990' + KB 19' @ 1009.0usft
MD Reference: Precision 523: GL 990' + KB 19' @ 1009.0usft
North Reference: Grid
Survey Calculation Method: Minimum Curvature
Database: Oklahoma District

Survey

MD (usft)	Inc (°)	Azi (azimuth) (°)	TVD (usft)	N/S (usft)	E/W (usft)	V. Sec (usft)	DLeg (°/100usft)
2,506.0	0.23	246.98	2,503.3	-63.7	21.2	66.7	0.22
2,531.0	0.24	240.47	2,528.3	-63.8	21.1	66.7	0.11
2,556.0	0.23	252.04	2,553.3	-63.8	21.0	66.7	0.19
2,581.0	0.17	247.54	2,578.3	-63.9	20.9	66.6	0.25
2,606.0	0.17	242.02	2,603.3	-63.9	20.8	66.6	0.07
2,631.0	0.22	247.93	2,628.3	-63.9	20.8	66.6	0.22
2,656.0	0.28	249.57	2,653.3	-64.0	20.7	66.6	0.24
2,681.0	0.21	245.86	2,678.3	-64.0	20.6	66.6	0.29
2,706.0	0.26	240.53	2,703.3	-64.0	20.5	66.6	0.22
2,731.0	0.29	241.79	2,728.3	-64.1	20.4	66.6	0.12
2,756.0	0.22	265.26	2,753.3	-64.1	20.3	66.6	0.50
2,781.0	0.22	247.81	2,778.3	-64.2	20.2	66.6	0.27
2,806.0	0.28	244.05	2,803.3	-64.2	20.1	66.6	0.25
2,831.0	0.27	241.06	2,828.3	-64.3	20.0	66.6	0.07
2,856.0	0.27	249.00	2,853.3	-64.3	19.9	66.6	0.15
2,881.0	0.26	242.71	2,878.3	-64.4	19.8	66.6	0.12
2,906.0	0.29	232.23	2,903.3	-64.4	19.7	66.6	0.23
2,931.0	0.21	237.00	2,928.3	-64.5	19.6	66.6	0.33
2,956.0	0.22	225.58	2,953.3	-64.5	19.5	66.7	0.18
2,981.0	0.24	234.12	2,978.3	-64.6	19.4	66.7	0.16
3,006.0	0.20	244.52	3,003.3	-64.7	19.3	66.7	0.23
3,031.0	0.24	235.97	3,028.3	-64.7	19.3	66.7	0.21
3,056.0	0.23	236.89	3,053.3	-64.8	19.2	66.7	0.04
3,081.0	0.20	241.32	3,078.3	-64.8	19.1	66.7	0.14
3,106.0	0.20	246.35	3,103.3	-64.8	19.0	66.7	0.07
3,131.0	0.25	233.96	3,128.3	-64.9	18.9	66.7	0.28
3,156.0	0.24	244.80	3,153.3	-65.0	18.8	66.7	0.19
3,181.0	0.33	241.45	3,178.3	-65.0	18.7	66.7	0.37
3,206.0	0.33	245.84	3,203.3	-65.1	18.6	66.7	0.10
3,231.0	0.36	236.12	3,228.3	-65.1	18.5	66.8	0.26
3,256.0	0.34	243.71	3,253.3	-65.2	18.3	66.8	0.20
3,281.0	0.37	239.54	3,278.3	-65.3	18.2	66.8	0.16
3,306.0	0.31	228.82	3,303.3	-65.4	18.1	66.8	0.35
3,331.0	0.36	233.74	3,328.3	-65.5	18.0	66.8	0.23
3,356.0	0.35	228.00	3,353.3	-65.6	17.8	66.9	0.15
3,381.0	0.33	228.94	3,378.3	-65.7	17.7	66.9	0.08
3,406.0	0.30	233.68	3,403.3	-65.8	17.6	66.9	0.16
3,431.0	0.30	239.25	3,428.3	-65.8	17.5	67.0	0.12
3,456.0	0.32	233.95	3,453.3	-65.9	17.4	67.0	0.14
3,481.0	0.34	220.29	3,478.3	-66.0	17.3	67.0	0.32
3,506.0	0.31	231.13	3,503.3	-66.1	17.2	67.1	0.27
3,531.0	0.35	228.89	3,528.3	-66.2	17.1	67.1	0.17
3,556.0	0.27	243.00	3,553.3	-66.3	17.0	67.1	0.44
3,581.0	0.28	229.44	3,578.3	-66.3	16.9	67.1	0.26

RECEIVED
JUL 20 2015



EOW Completion Report



Company: Antero	Local Co-ordinate Reference: Well McGee Unit 1H
Project: Doddridge County WV	TVD Reference: Precision 523: GL 990' + KB 19' @ 1009.0usft
Site: Robert Williams Pad: Leggett/ Pike Pad/James/M	MD Reference: Precision 523: GL 990' + KB 19' @ 1009.0usft
Well: McGee Unit 1H	North Reference: Grid
Wellbore: Original Wellpath	Survey Calculation Method: Minimum Curvature
Design: As Drilled	Database: Oklahoma District

Survey

MD (usft)	Inc (°)	Azi (azimuth) (°)	TVD (usft)	N/S (usft)	E/W (usft)	V. Sec (usft)	DLeg (°/100usft)
3,606.0	0.32	235.20	3,603.3	-66.4	16.8	67.2	0.20
3,631.0	0.29	235.58	3,628.3	-66.5	16.7	67.2	0.12
3,656.0	0.25	237.21	3,653.3	-66.6	16.6	67.2	0.16
3,681.0	0.27	249.31	3,678.3	-66.6	16.5	67.2	0.23
3,706.0	0.29	235.66	3,703.3	-66.7	16.4	67.2	0.28
3,731.0	0.25	248.86	3,728.3	-66.7	16.3	67.2	0.29
3,756.0	0.23	251.37	3,753.3	-66.8	16.2	67.2	0.09
3,781.0	0.20	247.57	3,778.3	-66.8	16.1	67.2	0.13
3,806.0	0.19	264.40	3,803.3	-66.8	16.0	67.2	0.23
3,831.0	0.15	247.98	3,828.3	-66.8	15.9	67.2	0.25
3,856.0	0.29	239.47	3,853.3	-66.9	15.8	67.2	0.57
3,881.0	0.23	237.07	3,878.3	-66.9	15.7	67.2	0.24
3,906.0	0.18	216.13	3,903.3	-67.0	15.7	67.2	0.36
3,931.0	0.15	228.07	3,928.3	-67.0	15.6	67.2	0.18
3,956.0	0.15	228.49	3,953.3	-67.1	15.6	67.3	0.00
3,981.0	0.16	234.94	3,978.3	-67.1	15.5	67.3	0.08
4,006.0	0.13	293.39	4,003.3	-67.1	15.5	67.3	0.58
4,031.0	0.10	330.84	4,028.3	-67.1	15.4	67.2	0.32
4,056.0	0.13	335.22	4,053.3	-67.1	15.4	67.2	0.12
4,081.0	0.21	1.82	4,078.3	-67.0	15.4	67.1	0.44
4,106.0	0.24	12.50	4,103.3	-66.9	15.4	67.0	0.21
4,131.0	0.24	15.23	4,128.3	-66.8	15.4	66.9	0.05
4,156.0	0.28	40.26	4,153.3	-66.7	15.5	66.9	0.48
4,181.0	0.44	22.13	4,178.3	-66.6	15.6	66.8	0.78
4,206.0	0.39	23.86	4,203.3	-66.4	15.6	66.7	0.21
4,231.0	0.43	34.94	4,228.3	-66.2	15.7	66.6	0.35
4,256.0	0.47	24.73	4,253.3	-66.1	15.8	66.4	0.36
4,281.0	0.65	24.37	4,278.3	-65.8	15.9	66.3	0.72
4,306.0	0.50	27.79	4,303.3	-65.6	16.0	66.1	0.62
4,331.0	0.49	23.20	4,328.3	-65.4	16.1	66.0	0.16
4,356.0	0.58	28.32	4,353.3	-65.2	16.2	65.9	0.41
4,381.0	0.63	30.93	4,378.3	-65.0	16.4	65.7	0.23
4,406.0	0.60	37.96	4,403.3	-64.8	16.5	65.6	0.32
4,431.0	0.57	41.17	4,428.3	-64.6	16.7	65.5	0.18
4,456.0	0.61	44.69	4,453.3	-64.4	16.8	65.4	0.22
4,481.0	0.59	44.17	4,478.3	-64.2	17.0	65.3	0.08
4,506.0	0.56	48.58	4,503.3	-64.0	17.2	65.2	0.21
4,531.0	0.59	43.42	4,528.3	-63.8	17.4	65.1	0.24
4,556.0	0.52	50.63	4,553.3	-63.7	17.6	65.0	0.40
4,581.0	0.53	52.88	4,578.3	-63.5	17.7	65.0	0.09
4,606.0	0.47	58.45	4,603.3	-63.4	17.9	65.0	0.31
4,631.0	0.48	53.88	4,628.3	-63.3	18.1	64.9	0.16
4,656.0	0.43	57.72	4,653.3	-63.2	18.3	64.9	0.23
4,681.0	0.45	58.95	4,678.3	-63.1	18.4	64.9	0.09

JUL 20 2015



EOW Completion Report



Company: Antero
Project: Doddridge County WV
Site: Robert Williams Pad: Leggett/ Pike Pad/James/M
Well: McGee Unit 1H
Wellbore: Original Wellpath
Design: As Drilled

Local Co-ordinate Reference: Well McGee Unit 1H
TVD Reference: Precision 523: GL 990' + KB 19' @ 1009.0usft
MD Reference: Precision 523: GL 990' + KB 19' @ 1009.0usft
North Reference: Grid
Survey Calculation Method: Minimum Curvature
Database: Oklahoma District

Survey

MD (usft)	Inc (°)	Azi (azimuth) (°)	TVD (usft)	N/S (usft)	E/W (usft)	V. Sec (usft)	DLeg (°/100usft)
4,706.0	0.41	69.04	4,703.3	-63.0	18.6	64.9	0.34
4,731.0	0.43	60.22	4,728.3	-62.9	18.8	64.9	0.27
4,756.0	0.40	54.14	4,753.3	-62.8	18.9	64.9	0.21
4,781.0	0.38	52.93	4,778.3	-62.7	19.0	64.8	0.09
4,806.0	0.31	54.07	4,803.3	-62.6	19.2	64.8	0.28
4,831.0	0.35	35.82	4,828.3	-62.5	19.3	64.7	0.45
4,856.0	0.27	40.91	4,853.3	-62.4	19.4	64.7	0.34
4,881.0	0.37	33.41	4,878.3	-62.3	19.4	64.6	0.43
4,906.0	0.25	49.35	4,903.3	-62.2	19.5	64.6	0.59
4,931.0	0.27	58.32	4,928.3	-62.1	19.6	64.5	0.18
4,956.0	0.28	41.17	4,953.3	-62.1	19.7	64.5	0.33
4,981.0	0.34	33.61	4,978.3	-62.0	19.8	64.4	0.29
5,006.0	0.24	43.45	5,003.3	-61.9	19.9	64.4	0.45
5,031.0	0.28	37.12	5,028.3	-61.8	19.9	64.3	0.20
5,056.0	0.23	54.68	5,053.3	-61.7	20.0	64.3	0.37
5,081.0	0.20	48.82	5,078.3	-61.6	20.1	64.3	0.15
5,106.0	0.20	85.86	5,103.3	-61.6	20.2	64.3	0.51
5,131.0	0.18	79.89	5,128.3	-61.6	20.2	64.3	0.11
5,156.0	0.17	74.96	5,153.3	-61.6	20.3	64.3	0.07
5,181.0	0.22	107.61	5,178.3	-61.6	20.4	64.4	0.48
5,206.0	0.17	107.97	5,203.3	-61.6	20.5	64.4	0.20
5,231.0	0.19	85.31	5,228.3	-61.6	20.6	64.5	0.29
5,256.0	0.13	107.44	5,253.3	-61.6	20.6	64.5	0.34
5,281.0	0.17	136.55	5,278.3	-61.7	20.7	64.6	0.34
5,306.0	0.26	118.33	5,303.3	-61.7	20.8	64.6	0.45
5,331.0	0.31	148.22	5,328.3	-61.8	20.8	64.8	0.62
5,356.0	0.20	130.40	5,353.3	-61.9	20.9	64.9	0.54
5,381.0	0.34	171.15	5,378.3	-62.0	21.0	65.0	0.92
5,406.0	0.35	151.75	5,403.3	-62.1	21.0	65.1	0.47
5,431.0	0.25	137.96	5,428.3	-62.2	21.1	65.2	0.49
5,456.0	0.35	149.39	5,453.3	-62.3	21.1	65.4	0.46
5,481.0	0.28	127.57	5,478.3	-62.4	21.2	65.5	0.55
5,506.0	0.33	133.30	5,503.3	-62.5	21.3	65.6	0.23
5,531.0	0.31	149.51	5,528.3	-62.6	21.4	65.8	0.37
5,556.0	0.44	161.45	5,553.3	-62.8	21.5	65.9	0.60
5,581.0	0.45	169.64	5,578.3	-63.0	21.5	66.1	0.26
5,606.0	0.51	140.93	5,603.3	-63.2	21.6	66.3	0.98
5,631.0	0.60	138.68	5,628.3	-63.3	21.8	66.6	0.37
5,656.0	0.61	170.85	5,653.3	-63.6	21.9	66.8	1.34
5,681.0	0.58	148.56	5,678.3	-63.8	22.0	67.1	0.93
5,706.0	0.53	155.74	5,703.3	-64.0	22.1	67.3	0.34
5,739.0	0.44	150.98	5,736.3	-64.3	22.2	67.6	0.30
5,769.0	0.43	163.20	5,766.3	-64.5	22.3	67.8	0.31
5,799.0	0.77	154.37	5,796.3	-64.8	22.4	68.1	1.17



EOW Completion Report

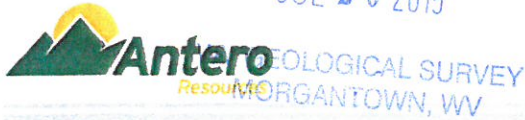


Company: Antero
Project: Doddridge County WV
Site: Robert Williams Pad: Leggett/ Pike Pad/James/M
Well: McGee Unit 1H
Wellbore: Original Wellpath
Design: As Drilled

Local Co-ordinate Reference: Well McGee Unit 1H
TVD Reference: Precision 523: GL 990' + KB 19' @ 1009.0usft
MD Reference: Precision 523: GL 990' + KB 19' @ 1009.0usft
North Reference: Grid
Survey Calculation Method: Minimum Curvature
Database: Oklahoma District

Survey

MD (usft)	Inc (°)	Azi (azimuth) (°)	TVD (usft)	N/S (usft)	E/W (usft)	V. Sec (usft)	DLeg (°/100usft)
5,829.0	3.57	157.27	5,826.2	-65.8	22.9	69.3	9.34
5,858.0	6.76	166.53	5,855.1	-68.3	23.6	71.8	11.33
5,888.0	8.90	194.39	5,884.8	-72.3	23.4	75.3	14.32
5,918.0	11.93	206.94	5,914.4	-77.3	21.5	79.0	12.56
5,948.0	14.51	215.77	5,943.6	-83.1	17.9	82.7	10.90
5,978.0	17.15	224.48	5,972.4	-89.3	12.6	86.0	11.82
6,008.0	20.16	231.37	6,000.8	-95.7	5.4	88.7	12.42
6,037.0	23.31	236.78	6,027.8	-102.0	-3.3	90.6	12.86
6,067.0	25.25	242.43	6,055.1	-108.2	-13.9	91.7	10.08
6,097.0	25.31	240.47	6,082.3	-114.3	-25.2	92.4	2.80
6,127.0	25.23	231.17	6,109.4	-121.5	-35.7	94.3	13.22
6,157.0	26.28	222.54	6,136.4	-130.4	-45.2	98.3	12.97
6,178.0	27.32	218.16	6,155.2	-137.6	-51.3	102.2	10.61
SCMR							
6,187.0	27.80	216.38	6,163.2	-140.9	-53.9	104.1	10.61
6,217.0	29.02	211.17	6,189.5	-152.8	-61.8	111.4	9.21
6,247.0	30.51	204.10	6,215.6	-165.9	-68.6	120.3	12.70
6,277.0	32.04	196.99	6,241.2	-180.5	-74.1	131.1	13.31
6,306.0	33.60	191.93	6,265.6	-195.7	-78.0	143.2	10.88
6,336.0	35.79	187.26	6,290.3	-212.6	-80.8	157.2	11.48
6,366.0	38.80	183.89	6,314.2	-230.6	-82.6	172.7	12.12
6,373.0	39.49	183.33	6,319.6	-235.1	-82.8	176.6	11.08
MDLX							
6,396.0	41.77	181.58	6,337.0	-250.0	-83.5	189.8	11.08
6,426.0	44.70	179.97	6,358.9	-270.6	-83.7	208.3	10.43
6,456.0	47.94	179.20	6,379.6	-292.2	-83.6	227.9	10.96
6,485.0	51.66	178.14	6,398.3	-314.4	-83.1	248.1	13.13
6,515.0	55.64	175.40	6,416.1	-338.5	-81.7	270.5	15.17
6,545.0	59.32	171.82	6,432.2	-363.6	-78.9	294.4	15.86
6,563.0	60.87	170.51	6,441.2	-379.0	-76.5	309.4	10.67
BRKT							
6,575.0	61.91	169.66	6,447.0	-389.4	-74.7	319.5	10.67
6,605.0	63.96	167.42	6,460.6	-415.6	-69.3	345.4	9.53
6,625.0	66.25	165.59	6,469.0	-433.2	-65.1	363.2	14.13
TLLY							
6,635.0	67.40	164.70	6,473.0	-442.1	-62.7	372.2	14.13
6,665.0	70.30	162.75	6,483.8	-469.0	-54.9	399.8	11.41
6,689.0	72.33	161.64	6,491.5	-490.6	-47.9	422.4	9.52
HMLN							
6,695.0	72.84	161.37	6,493.3	-496.1	-46.1	428.0	9.52
6,709.0	74.34	160.94	6,497.2	-508.8	-41.8	441.4	11.10
MRCL_HOT							
6,725.0	76.05	160.45	6,501.3	-523.4	-36.7	456.8	11.10
6,762.0	81.52	159.44	6,508.5	-557.4	-24.2	492.9	15.02
6,792.0	83.54	159.06	6,512.4	-585.3	-13.7	522.5	6.85



Company: Antero
Project: Doddridge County WV
Site: Robert Williams Pad: Leggett/ Pike Pad/James/M
Well: McGee Unit 1H
Wellbore: Original Wellpath
Design: As Drilled

Local Co-ordinate Reference: Well McGee Unit 1H
TVD Reference: Precision 523: GL 990' + KB 19' @ 1009.0usft
MD Reference: Precision 523: GL 990' + KB 19' @ 1009.0usft
North Reference: Grid
Survey Calculation Method: Minimum Curvature
Database: Oklahoma District

Survey

MD (usft)	Inc (°)	Azi (azimuth) (°)	TVD (usft)	N/S (usft)	E/W (usft)	V. Sec (usft)	DLeg (°/100usft)
6,822.0	85.30	158.13	6,515.3	-613.0	-2.8	552.3	6.63
6,852.0	87.81	155.80	6,517.1	-640.6	8.9	582.2	11.41
6,881.0	89.20	153.93	6,517.9	-666.8	21.2	611.2	8.03
6,971.0	88.59	153.38	6,519.6	-747.5	61.2	701.2	0.91
7,061.0	89.80	153.12	6,520.9	-827.8	101.7	791.1	1.38
7,150.0	90.47	154.78	6,520.7	-907.8	140.7	880.1	2.01
7,240.0	89.93	155.60	6,520.4	-989.5	178.5	970.1	1.09
7,329.0	89.80	155.58	6,520.6	-1,070.5	215.3	1,059.1	0.15
7,419.0	89.06	154.53	6,521.5	-1,152.1	253.2	1,149.1	1.43
7,509.0	89.40	155.11	6,522.7	-1,233.6	291.5	1,239.1	0.75
7,598.0	91.17	152.95	6,522.2	-1,313.6	330.5	1,328.1	3.14
7,688.0	90.30	153.91	6,521.1	-1,394.1	370.8	1,418.1	1.44
7,777.0	90.00	155.10	6,520.8	-1,474.4	409.1	1,507.1	1.38
7,867.0	90.54	153.70	6,520.4	-1,555.6	447.9	1,597.1	1.67
7,957.0	88.99	154.62	6,520.8	-1,636.6	487.2	1,687.0	2.00
8,046.0	90.07	155.65	6,521.5	-1,717.3	524.6	1,776.0	1.68
8,136.0	90.37	155.63	6,521.2	-1,799.3	561.7	1,866.0	0.33
8,225.0	90.24	154.87	6,520.7	-1,880.1	599.0	1,955.0	0.87
8,315.0	89.97	152.64	6,520.5	-1,960.8	638.8	2,045.0	2.50
8,404.0	90.10	155.24	6,520.5	-2,040.8	677.9	2,134.0	2.92
8,494.0	89.93	154.99	6,520.5	-2,122.4	715.7	2,224.0	0.34
8,583.0	88.86	154.63	6,521.4	-2,202.9	753.6	2,313.0	1.27
8,673.0	89.76	155.58	6,522.5	-2,284.6	791.5	2,403.0	1.45
8,762.0	90.60	154.73	6,522.2	-2,365.3	828.9	2,491.9	1.34
8,852.0	90.30	156.20	6,521.5	-2,447.2	866.3	2,581.9	1.67
8,941.0	90.81	154.01	6,520.6	-2,527.9	903.7	2,670.9	2.53
9,031.0	89.73	153.80	6,520.2	-2,608.7	943.3	2,760.9	1.22
9,120.0	88.96	154.66	6,521.2	-2,688.9	982.0	2,849.9	1.30
9,210.0	89.70	154.92	6,522.3	-2,770.3	1,020.3	2,939.9	0.87
9,299.0	90.30	155.83	6,522.3	-2,851.2	1,057.4	3,028.9	1.22
9,389.0	89.60	154.45	6,522.4	-2,932.9	1,095.3	3,118.9	1.72
9,479.0	89.90	153.80	6,522.7	-3,013.8	1,134.5	3,208.9	0.80
9,572.0	89.53	155.30	6,523.2	-3,097.8	1,174.5	3,301.9	1.66
9,666.0	88.62	154.58	6,524.7	-3,183.0	1,214.3	3,395.9	1.23
9,760.0	88.42	154.98	6,527.2	-3,268.0	1,254.3	3,489.8	0.48
9,854.0	88.96	155.54	6,529.3	-3,353.3	1,293.7	3,583.8	0.83
9,948.0	90.40	154.24	6,529.8	-3,438.4	1,333.6	3,677.8	2.06
10,042.0	90.67	154.30	6,529.0	-3,523.1	1,374.4	3,771.8	0.29
10,136.0	90.91	153.23	6,527.7	-3,607.4	1,415.9	3,865.8	1.17
10,230.0	89.43	154.50	6,527.4	-3,691.8	1,457.3	3,959.7	2.07
10,323.0	89.13	155.47	6,528.5	-3,776.1	1,496.6	4,052.7	1.09
10,417.0	90.40	153.59	6,528.9	-3,860.9	1,537.1	4,146.7	2.41
10,511.0	89.87	153.65	6,528.7	-3,945.1	1,578.8	4,240.7	0.57
10,605.0	88.49	155.42	6,530.1	-4,030.0	1,619.2	4,334.7	2.39

JUL 20 2015



GEOLOGICAL SURVEY
MORGANTOWN, WV

EOW Completion Report



Company: Antero
Project: Doddridge County WV
Site: Robert Williams Pad: Leggett/ Pike Pad/James/M
Well: McGee Unit 1H
Wellbore: Original Wellpath
Design: As Drilled

Local Co-ordinate Reference: Well McGee Unit 1H
TVD Reference: Precision 523: GL 990' + KB 19' @ 1009.0usft
MD Reference: Precision 523: GL 990' + KB 19' @ 1009.0usft
North Reference: Grid
Survey Calculation Method: Minimum Curvature
Database: Oklahoma District

Survey

MD (usft)	Inc (°)	Azi (azimuth) (°)	TVD (usft)	N/S (usft)	E/W (usft)	V. Sec (usft)	DLeg (°/100usft)
10,695.0	90.57	154.45	6,530.8	-4,111.5	1,657.4	4,424.7	2.55
10,784.0	90.94	155.65	6,529.6	-4,192.2	1,694.9	4,513.7	1.41
10,874.0	90.74	153.04	6,528.3	-4,273.3	1,733.9	4,603.7	2.91
10,963.0	90.20	153.55	6,527.6	-4,352.8	1,773.8	4,692.6	0.83
11,053.0	90.67	154.66	6,526.9	-4,433.8	1,813.2	4,782.6	1.34
11,142.0	89.93	155.00	6,526.4	-4,514.3	1,851.0	4,871.6	0.92
11,232.0	89.76	155.61	6,526.7	-4,596.1	1,888.6	4,961.6	0.70
11,322.0	90.17	154.80	6,526.7	-4,677.8	1,926.3	5,051.6	1.01
11,411.0	90.13	154.97	6,526.5	-4,758.4	1,964.1	5,140.6	0.20
11,501.0	90.03	153.71	6,526.4	-4,839.5	2,003.1	5,230.6	1.40
11,590.0	90.03	154.44	6,526.3	-4,919.5	2,042.0	5,319.6	0.82
11,679.0	88.52	153.79	6,527.4	-4,999.6	2,080.9	5,408.6	1.85
11,769.0	88.32	153.12	6,529.9	-5,080.1	2,121.1	5,498.5	0.78
11,858.0	88.62	155.81	6,532.3	-5,160.3	2,159.4	5,587.5	3.04
11,948.0	88.66	155.41	6,534.4	-5,242.3	2,196.6	5,677.5	0.45
12,038.0	88.73	154.94	6,536.5	-5,324.0	2,234.3	5,767.4	0.53
12,127.0	89.46	155.08	6,537.9	-5,404.6	2,271.9	5,856.4	0.84
12,216.0	90.54	155.67	6,537.9	-5,485.5	2,309.0	5,945.4	1.38
12,306.0	89.70	154.35	6,537.7	-5,567.1	2,347.0	6,035.4	1.74
12,396.0	90.07	153.41	6,537.9	-5,647.9	2,386.7	6,125.4	1.12
12,485.0	89.16	153.90	6,538.5	-5,727.6	2,426.1	6,214.4	1.16
12,575.0	87.68	154.02	6,541.0	-5,808.5	2,465.6	6,304.3	1.65
12,664.0	89.16	153.39	6,543.4	-5,888.2	2,505.1	6,393.3	1.81
12,754.0	89.87	154.32	6,544.2	-5,969.0	2,544.7	6,483.3	1.30
12,844.0	90.20	154.84	6,544.1	-6,050.3	2,583.3	6,573.3	0.68
12,933.0	90.20	154.29	6,543.8	-6,130.7	2,621.6	6,662.3	0.62
13,023.0	89.56	155.26	6,544.0	-6,212.1	2,659.9	6,752.3	1.29
13,112.0	89.70	154.54	6,544.6	-6,292.7	2,697.7	6,841.3	0.82
13,202.0	90.84	154.19	6,544.2	-6,373.8	2,736.6	6,931.3	1.33
13,291.0	90.84	155.73	6,542.8	-6,454.5	2,774.3	7,020.2	1.73
13,380.0	91.04	154.95	6,541.4	-6,535.3	2,811.4	7,109.2	0.90
13,470.0	91.01	155.35	6,539.8	-6,617.0	2,849.2	7,199.2	0.45
13,560.0	90.13	155.12	6,538.9	-6,698.7	2,886.9	7,289.2	1.01
13,649.0	89.90	155.50	6,538.9	-6,779.6	2,924.1	7,378.2	0.50
13,739.0	90.20	153.82	6,538.8	-6,860.9	2,962.6	7,468.2	1.90
13,828.0	90.48	152.68	6,538.3	-6,940.4	3,002.7	7,557.2	1.32
13,917.0	91.18	152.89	6,537.0	-7,019.5	3,043.4	7,646.1	0.82
14,007.0	91.44	155.10	6,534.9	-7,100.4	3,082.8	7,736.1	2.47
14,096.0	90.50	154.62	6,533.4	-7,180.9	3,120.6	7,825.1	1.19
14,186.0	89.16	151.92	6,533.7	-7,261.3	3,161.1	7,915.0	3.35
14,275.0	91.11	152.43	6,533.5	-7,340.0	3,202.6	8,003.9	2.26
14,365.0	91.28	154.89	6,531.6	-7,420.6	3,242.6	8,093.9	2.74
14,454.0	91.51	155.31	6,529.4	-7,501.3	3,280.0	8,182.9	0.54
14,544.0	91.11	154.80	6,527.4	-7,582.9	3,318.0	8,272.8	0.72
14,633.0	91.88	157.19	6,525.0	-7,664.2	3,354.2	8,361.8	2.82

RECEIVED

JUL 20 2015



GEOLOGICAL SURVEY
MORGANTOWN, WV

EOW Completion Report



Company: Antero
Project: Doddridge County WV
Site: Robert Williams Pad: Leggett/ Pike Pad/James/M
Well: McGee Unit 1H
Wellbore: Original Wellpath
Design: As Drilled

Local Co-ordinate Reference: Well McGee Unit 1H
TVD Reference: Precision 523: GL 990' + KB 19' @ 1009.0usft
MD Reference: Precision 523: GL 990' + KB 19' @ 1009.0usft
North Reference: Grid
Survey Calculation Method: Minimum Curvature
Database: Oklahoma District

Survey

MD (usft)	Inc (°)	Azi (azimuth) (°)	TVD (usft)	N/S (usft)	E/W (usft)	V. Sec (usft)	DLeg (°/100usft)
14,723.0	91.28	156.03	6,522.5	-7,746.8	3,389.9	8,451.7	1.45
14,813.0	91.68	155.35	6,520.2	-7,828.8	3,426.9	8,541.6	0.88
14,902.0	91.48	153.78	6,517.8	-7,909.1	3,465.1	8,630.6	1.78
14,992.0	93.67	154.74	6,513.7	-7,990.1	3,504.2	8,720.5	2.66
15,082.0	92.22	155.16	6,509.1	-8,071.5	3,542.2	8,810.4	1.68
15,171.0	90.24	154.39	6,507.2	-8,152.0	3,580.1	8,899.3	2.39
15,196.0	90.74	153.60	6,507.0	-8,174.5	3,591.1	8,924.3	3.74
15,253.0	91.18	153.80	6,506.0	-8,225.6	3,616.3	8,981.3	0.85

Design Annotations

Measured Depth (usft)	Vertical Depth (usft)	Local Coordinates		Comment
		+N/-S (usft)	+E/-W (usft)	
6,178.0	6,155.2	-137.6	-51.3	SCMR
6,373.0	6,319.6	-235.1	-82.8	MDLX
6,563.0	6,441.2	-379.0	-76.5	BRKT
6,625.0	6,469.0	-433.2	-65.1	TLLY
6,689.0	6,491.5	-490.6	-47.9	HMLN
6,709.0	6,497.2	-508.8	-41.8	MRCL_HOT

Checked By: _____ Approved By: _____ Date: _____