



Where energy meets innovation.

# Actual Wellpath Report

515681 AWP Proj: 11380'

Page 1 of 12

API #47-1706610



## REFERENCE WELLPATH IDENTIFICATION

Operator	EQT	Slot	Slot 03
Area	Doddridge Co., WV	Well	515681
Field	Doddridge	Wellbore	515681 AWB
Facility	OXF-127 Pad		

## REPORT SETUP INFORMATION

Projection System	NAD27 / Lambert West Virginia SP, Northern Zone (4701), US feet	Software System	WellArchitect® 4.0.1
North Reference	Grid	User	Gotfbral
Scale	0.999968	Report Generated	07/Aug/2015 at 13:11
Convergence at slot	0.82° West	Database/Source file	WANorthEast/515681_AWB.xml

## WELLPATH LOCATION

	Local coordinates		Grid coordinates		Geographic coordinates	
	North[ft]	East[ft]	Easting[US ft]	Northing[US ft]	Latitude	Longitude
Slot Location	-27.29	12.46	1634238.77	257024.84	39°11'54.496"N	80°47'26.231"W
Facility Reference Pt			1634226.31	257052.13	39°11'54.764"N	80°47'26.394"W
Field Reference Pt			0.00	0.00	38°17'12.460"N	86°28'23.077"W

## WELLPATH DATUM

Calculation method	Minimum curvature	Savanna 655 (RKB) to Facility Vertical Datum	16.00ft
Horizontal Reference Pt	Slot	Savanna 655 (RKB) to Mean Sea Level	1258.00ft
Vertical Reference Pt	Savanna 655 (RKB)	Savanna 655 (RKB) to Mud Line at Slot (Slot 03)	16.00ft
MD Reference Pt	Savanna 655 (RKB)	Section Origin	N 0.00, E 0.00 ft
Field Vertical Reference	Mean Sea Level	Section Azimuth	155.00°

RECEIVED  
Office of Oil and Gas

JAN 27 2016

WV Department of  
Environmental Protection

02/12/2016

07/Aug/2015



# Actual Wellpath Report

515681 AWP Proj: 11380'

Page 2 of 12



Where energy meets innovation.

## REFERENCE WELLPATH IDENTIFICATION

Operator	EQT	Slot	Slot 03
Area	Doddridge Co., WV	Well	515681
Field	Doddridge	Wellbore	515681 AWB
Facility	OXF-127 Pad		

## WELLPATH DATA (185 stations) † = interpolated/extrapolated station

MD [ft]	Inclination [°]	Azimuth [°]	TYD [ft]	Vert Sect [ft]	North [ft]	East [ft]	Grid East [US ft]	Grid North [US ft]	Latitude	Longitude	Closure Dist [ft]	Closure Dir [°]	DLS [°/100ft]
0.00†	0.000	86.310	0.00	0.00	0.00	0.00	1634238.77	257024.84	39°11'54.496"N	80°47'26.231"W	0.00	0.000	0.00
16.00	0.000	86.310	16.00	0.00	0.00	0.00	1634238.77	257024.84	39°11'54.496"N	80°47'26.231"W	0.00	0.000	0.00
103.00	0.370	86.310	103.00	0.10	0.02	0.28	1634239.05	257024.86	39°11'54.497"N	80°47'26.227"W	0.28	86.310	0.43
203.00	0.350	97.680	203.00	0.38	0.00	0.91	1634239.68	257024.84	39°11'54.496"N	80°47'26.219"W	0.91	90.124	0.07
303.00	0.220	82.580	303.00	0.61	-0.02	1.40	1634240.17	257024.82	39°11'54.496"N	80°47'26.213"W	1.40	90.737	0.15
403.00	0.220	100.090	403.00	0.78	-0.03	1.78	1634240.55	257024.81	39°11'54.496"N	80°47'26.208"W	1.78	90.865	0.07
503.00	0.460	102.710	502.99	1.13	-0.15	2.36	1634241.13	257024.69	39°11'54.495"N	80°47'26.201"W	2.36	93.610	0.24
603.00	0.540	100.750	602.99	1.65	-0.32	3.21	1634241.98	257024.52	39°11'54.494"N	80°47'26.190"W	3.23	95.776	0.08
703.00	0.370	109.340	702.99	2.15	-0.52	3.98	1634242.75	257024.32	39°11'54.492"N	80°47'26.180"W	4.01	97.440	0.18
803.00	0.290	116.200	802.98	2.58	-0.74	4.51	1634243.28	257024.10	39°11'54.490"N	80°47'26.174"W	4.57	99.295	0.09
903.00	0.140	105.200	902.98	2.85	-0.88	4.86	1634243.63	257023.96	39°11'54.488"N	80°47'26.169"W	4.94	100.295	0.15
1003.00	0.120	35.700	1002.98	2.88	-0.83	5.04	1634243.81	257024.01	39°11'54.489"N	80°47'26.167"W	5.10	99.350	0.15
1103.00	0.090	14.030	1102.98	2.77	-0.67	5.12	1634243.89	257024.17	39°11'54.490"N	80°47'26.166"W	5.16	97.439	0.05
1203.00	0.100	15.120	1202.98	2.64	-0.51	5.16	1634243.93	257024.33	39°11'54.492"N	80°47'26.165"W	5.18	95.620	0.01
1303.00	0.120	27.540	1302.98	2.51	-0.33	5.23	1634244.00	257024.51	39°11'54.494"N	80°47'26.165"W	5.24	93.616	0.03
1403.00	0.120	52.960	1402.98	2.42	-0.17	5.36	1634244.13	257024.67	39°11'54.495"N	80°47'26.163"W	5.36	91.864	0.05
1503.00	0.110	91.630	1502.98	2.45	-0.11	5.54	1634244.31	257024.73	39°11'54.496"N	80°47'26.161"W	5.54	91.180	0.08
1603.00	0.360	79.560	1602.98	2.57	-0.06	5.95	1634244.72	257024.78	39°11'54.497"N	80°47'26.155"W	5.95	90.578	0.25
1703.00	0.620	67.900	1702.98	2.67	0.20	6.76	1634245.53	257025.04	39°11'54.499"N	80°47'26.145"W	6.76	88.300	0.28
1803.00	0.640	67.740	1802.97	2.73	0.62	7.77	1634246.54	257025.46	39°11'54.504"N	80°47'26.132"W	7.80	85.472	0.02
1903.00	0.540	71.540	1902.97	2.81	0.98	8.74	1634247.51	257025.82	39°11'54.507"N	80°47'26.120"W	8.79	83.624	0.11
2003.00	0.470	75.880	2002.96	2.94	1.23	9.58	1634248.35	257026.07	39°11'54.510"N	80°47'26.110"W	9.66	82.711	0.08
2103.00	0.460	72.750	2102.96	3.07	1.44	10.36	1634249.13	257026.28	39°11'54.512"N	80°47'26.100"W	10.46	82.064	0.03
2203.00	0.490	83.950	2202.96	3.26	1.61	11.17	1634249.94	257026.45	39°11'54.514"N	80°47'26.089"W	11.29	81.806	0.10
2303.00	0.480	86.310	2302.95	3.55	1.68	12.02	1634250.79	257026.52	39°11'54.515"N	80°47'26.079"W	12.13	82.037	0.02

RECEIVED  
Office of Oil and Gas  
  
JAN 27 2016  
  
WV Department of  
Environmental Protection

02/12/2016

07/Aug/2015



# Actual Wellpath Report

515681 AWP Proj: 11380'

Page 3 of 12



Where energy meets innovation.

## REFERENCE WELLPATH IDENTIFICATION

Operator	EQT	Slot	Slot 03
Area	Doddridge Co., WV	Well	515681
Field	Doddridge	Wellbore	515681 AWB
Facility	OXF-127 Pad		

## WELLPATH DATA (185 stations)

MD [ft]	Inclination [°]	Azimuth [°]	TVD [ft]	Vert Sect [ft]	North [ft]	East [ft]	Grid East [US ft]	Grid North [US ft]	Latitude	Longitude	Closure Dist [ft]	Closure Dir [°]	DLS [°/100ft]
2403.00	0.490	87.970	2402.95	3.87	1.72	12.86	1634251.63	257026.56	39°11'54.515"N	80°47'26.068"W	12.98	82.370	0.02
2503.00	0.660	89.120	2502.94	4.28	1.75	13.86	1634252.63	257026.59	39°11'54.516"N	80°47'26.055"W	13.97	82.818	0.17
2603.00	0.970	93.510	2602.93	4.92	1.70	15.29	1634254.05	257026.54	39°11'54.515"N	80°47'26.037"W	15.38	83.639	0.32
2703.00	1.350	92.270	2702.91	5.86	1.61	17.31	1634256.08	257026.45	39°11'54.515"N	80°47'26.011"W	17.38	84.700	0.38
2803.00	1.910	93.180	2802.87	7.19	1.47	20.15	1634258.92	257026.31	39°11'54.514"N	80°47'25.975"W	20.20	85.837	0.56
2903.00	2.050	94.160	2902.81	8.84	1.24	23.60	1634262.36	257026.08	39°11'54.512"N	80°47'25.932"W	23.63	86.982	0.14
3003.00	2.150	94.390	3002.75	10.64	0.97	27.25	1634266.02	257025.81	39°11'54.510"N	80°47'25.885"W	27.27	87.959	0.10
3103.00	1.900	92.020	3102.68	12.31	0.77	30.78	1634269.55	257025.61	39°11'54.508"N	80°47'25.840"W	30.79	88.569	0.26
3203.00	1.470	89.840	3202.64	13.60	0.71	33.72	1634272.49	257025.55	39°11'54.508"N	80°47'25.803"W	33.72	88.787	0.43
3303.00	1.070	86.020	3302.61	14.48	0.78	35.93	1634274.70	257025.62	39°11'54.509"N	80°47'25.775"W	35.94	88.753	0.41
3403.00	0.800	82.990	3402.60	15.03	0.93	37.55	1634276.32	257025.77	39°11'54.511"N	80°47'25.754"W	37.57	88.578	0.27
3503.00	0.820	81.730	3502.59	15.45	1.12	38.96	1634277.72	257025.96	39°11'54.513"N	80°47'25.736"W	38.97	88.352	0.03
3603.00	0.650	73.530	3602.58	15.74	1.38	40.21	1634278.98	257026.22	39°11'54.516"N	80°47'25.721"W	40.23	88.028	0.20
3703.00	0.500	74.220	3702.58	15.89	1.66	41.17	1634279.94	257026.50	39°11'54.519"N	80°47'25.708"W	41.21	87.686	0.15
3803.00	0.430	67.230	3802.57	15.98	1.93	41.94	1634280.71	257026.77	39°11'54.521"N	80°47'25.699"W	41.98	87.368	0.09
3903.00	0.250	79.920	3902.57	16.05	2.11	42.50	1634281.27	257026.95	39°11'54.523"N	80°47'25.692"W	42.55	87.156	0.19
4003.00	0.130	211.390	4002.57	16.17	2.05	42.65	1634281.42	257026.89	39°11'54.523"N	80°47'25.690"W	42.70	87.245	0.35
4103.00	0.240	262.810	4102.57	16.17	1.93	42.39	1634281.16	257026.77	39°11'54.521"N	80°47'25.693"W	42.43	87.394	0.19
4203.00	0.390	269.890	4202.57	15.96	1.90	41.84	1634280.61	257026.74	39°11'54.521"N	80°47'25.700"W	41.88	87.396	0.15
4303.00	0.690	268.390	4302.57	15.58	1.88	40.90	1634279.67	257026.72	39°11'54.521"N	80°47'25.712"W	40.94	87.361	0.30
4403.00	0.720	274.660	4402.56	15.03	1.92	39.67	1634278.44	257026.76	39°11'54.521"N	80°47'25.728"W	39.72	87.230	0.08
4503.00	0.960	273.660	4502.55	14.31	2.02	38.21	1634276.98	257026.86	39°11'54.522"N	80°47'25.746"W	38.26	86.968	0.24
4603.00	1.250	271.770	4602.53	13.42	2.11	36.28	1634275.05	257026.95	39°11'54.522"N	80°47'25.771"W	36.34	86.670	0.29
4666.00	1.470	273.200	4665.51	12.73	2.18	34.79	1634273.56	257027.02	39°11'54.523"N	80°47'25.790"W	34.85	86.419	0.35
4688.00	1.340	278.550	4687.50	12.45	2.23	34.25	1634273.02	257027.07	39°11'54.523"N	80°47'25.796"W	34.32	86.273	0.84

RECEIVED  
Office of Oil and Gas

JAN 27 2016

WV Department of  
Environmental Protection

02/12/2016

07/Aug/2015



# Actual Wellpath Report

515681 AWP Proj: 11380'

Page 4 of 12



Where energy meets innovation.

REFERENCE WELLPATH IDENTIFICATION			
Operator	EQT	Slot	Slot 03
Area	Doddridge Co., WV	Well	515681
Field	Doddridge	Wellbore	515681 AWB
Facility	OXF-127 Pad		

WELLPATH DATA (185 stations)													
MD [ft]	Inclination [°]	Azimuth [°]	TVD [ft]	Vert Sect [ft]	North [ft]	East [ft]	Grid East [US ft]	Grid North [US ft]	Latitude	Longitude	Closure Dist [ft]	Closure Dir [°]	DLS [°/100ft]
4719.00	1.180	263.880	4718.50	12.15	2.25	33.57	1634272.34	257027.09	39°11'54.523"N	80°47'25.805"W	33.65	86.165	1.16
4751.00	2.110	205.620	4750.49	12.42	1.68	32.99	1634271.76	257026.52	39°11'54.518"N	80°47'25.812"W	33.04	87.077	5.61
4782.00	4.410	189.650	4781.43	13.76	-0.01	32.55	1634271.31	257024.83	39°11'54.501"N	80°47'25.818"W	32.55	90.009	7.91
4813.00	6.090	185.550	4812.30	16.16	-2.82	32.19	1634270.96	257022.02	39°11'54.473"N	80°47'25.822"W	32.31	95.002	5.55
4846.00	6.630	182.460	4845.10	19.35	-6.46	31.94	1634270.70	257018.38	39°11'54.437"N	80°47'25.824"W	32.58	101.440	1.94
4877.00	6.870	182.060	4875.89	22.59	-10.10	31.79	1634270.56	257014.74	39°11'54.401"N	80°47'25.825"W	33.36	107.630	0.79
4908.00	7.060	181.620	4906.66	25.95	-13.86	31.67	1634270.44	257010.98	39°11'54.364"N	80°47'25.826"W	34.57	113.636	0.64
4941.00	8.130	183.750	4939.37	29.81	-18.22	31.46	1634270.23	257006.62	39°11'54.321"N	80°47'25.828"W	36.35	120.071	3.35
4973.00	9.730	200.100	4970.98	33.70	-23.01	30.38	1634269.15	257001.83	39°11'54.273"N	80°47'25.841"W	38.12	127.142	9.33
5003.00	11.330	220.530	5000.49	36.71	-27.64	27.60	1634266.37	256997.20	39°11'54.227"N	80°47'25.875"W	39.06	135.042	13.45
5034.00	12.290	238.330	5030.84	38.36	-31.69	22.81	1634261.58	256993.16	39°11'54.186"N	80°47'25.936"W	39.04	144.252	12.10
5065.00	12.490	248.990	5061.12	38.51	-34.62	16.87	1634255.64	256990.22	39°11'54.157"N	80°47'26.010"W	38.51	154.020	7.40
5097.00	14.090	251.870	5092.26	37.80	-37.07	9.94	1634248.71	256987.77	39°11'54.131"N	80°47'26.098"W	38.38	164.994	5.41
5128.00	16.450	251.190	5122.17	36.87	-39.66	2.20	1634240.97	256985.18	39°11'54.105"N	80°47'26.196"W	39.72	176.831	7.63
5160.00	19.680	247.350	5152.59	36.16	-43.20	-7.07	1634231.70	256981.64	39°11'54.068"N	80°47'26.313"W	43.77	189.293	10.75
5191.00	21.910	245.610	5181.57	35.89	-47.60	-17.16	1634221.62	256977.24	39°11'54.023"N	80°47'26.440"W	50.60	199.820	7.46
5224.00	23.970	245.500	5211.96	35.77	-52.92	-28.86	1634209.91	256971.92	39°11'53.969"N	80°47'26.588"W	60.28	208.608	6.24
5255.00	25.630	247.380	5240.10	35.43	-58.11	-40.78	1634197.99	256966.73	39°11'53.916"N	80°47'26.738"W	71.00	215.061	5.93
5287.00	27.030	251.140	5268.78	34.37	-63.13	-54.05	1634184.72	256961.72	39°11'53.865"N	80°47'26.906"W	83.11	220.574	6.80
5317.00	27.860	252.890	5295.40	32.67	-67.39	-67.21	1634171.57	256957.45	39°11'53.821"N	80°47'27.072"W	95.17	224.921	3.86
5350.00	27.450	253.820	5324.63	30.45	-71.78	-81.88	1634156.89	256953.06	39°11'53.775"N	80°47'27.258"W	108.89	228.761	1.80
5381.00	28.520	256.830	5352.01	27.84	-75.46	-95.95	1634142.82	256949.39	39°11'53.737"N	80°47'27.436"W	122.07	231.818	5.72
5413.00	31.970	259.400	5379.65	24.16	-78.76	-111.72	1634127.05	256946.09	39°11'53.702"N	80°47'27.636"W	136.69	234.818	11.51
5443.00	35.420	260.000	5404.60	19.94	-81.73	-128.09	1634110.68	256943.11	39°11'53.670"N	80°47'27.843"W	151.95	237.461	11.55
5477.00	38.620	257.870	5431.75	15.02	-85.67	-148.18	1634090.60	256939.17	39°11'53.629"N	80°47'28.097"W	171.16	239.965	10.14

RECEIVED  
Office of Oil and Gas

JAN 27 2016

WV Department of  
Environmental Protection

02/12/2016

07/Aug/2015



# Actual Wellpath Report

515681 AWP Proj: 11380'

Page 5 of 12



Where energy meets innovation.

REFERENCE WELLPATH IDENTIFICATION			
Operator	EQT	Slot	Slot 03
Area	Doddridge Co., WV	Well	515681
Field	Doddridge	Wellbore	515681 AWB
Facility	OXF-127 Pad		

WELLPATH DATA (185 stations)													
MD [ft]	Inclination [°]	Azimuth [°]	TVD [ft]	Vert Sect [ft]	North [ft]	East [ft]	Grid East [US ft]	Grid North [US ft]	Latitude	Longitude	Closure Dist [ft]	Closure Dir [°]	DLS [°/100ft]
5506.00	40.860	255.680	5454.05	11.25	-89.92	-166.22	1634072.56	256934.92	39°11'53.584"N	80°47'28.326"W	188.98	241.588	9.11
5569.00	44.970	255.090	5500.18	3.52	-100.75	-207.72	1634031.06	256924.09	39°11'53.471"N	80°47'28.851"W	230.86	244.125	6.55
5632.00	46.890	255.850	5543.99	-4.71	-112.10	-251.53	1633987.25	256912.74	39°11'53.353"N	80°47'29.405"W	275.38	245.979	3.17
5695.00	46.890	256.000	5587.05	-13.42	-123.28	-296.14	1633942.64	256901.56	39°11'53.236"N	80°47'29.970"W	320.78	247.398	0.17
5758.00	46.820	256.750	5630.13	-22.49	-134.11	-340.82	1633897.97	256890.73	39°11'53.123"N	80°47'30.535"W	366.25	248.520	0.88
5821.00	45.060	257.650	5673.94	-32.05	-144.15	-384.96	1633853.82	256880.70	39°11'53.017"N	80°47'31.094"W	411.06	249.472	2.98
5884.00	43.910	258.890	5718.89	-42.18	-153.13	-428.18	1633810.60	256871.72	39°11'52.922"N	80°47'31.641"W	454.74	250.322	2.29
5947.00	43.980	260.030	5764.25	-53.09	-161.12	-471.16	1633767.62	256863.72	39°11'52.837"N	80°47'32.186"W	497.95	251.121	1.26
6010.00	44.020	260.260	5809.57	-64.53	-168.61	-514.28	1633724.51	256856.23	39°11'52.757"N	80°47'32.732"W	541.21	251.848	0.26
6073.00	44.010	260.150	5854.87	-76.01	-176.06	-557.42	1633681.37	256848.79	39°11'52.677"N	80°47'33.278"W	584.56	252.471	0.12
6136.00	44.030	260.470	5900.18	-87.57	-183.43	-600.57	1633638.22	256841.42	39°11'52.598"N	80°47'33.825"W	627.96	253.016	0.35
6200.00	43.990	260.480	5946.21	-99.43	-190.79	-644.42	1633594.37	256834.06	39°11'52.519"N	80°47'34.381"W	672.07	253.508	0.06
6262.00	43.940	260.690	5990.83	-111.00	-197.83	-686.89	1633551.91	256827.02	39°11'52.444"N	80°47'34.919"W	714.81	253.933	0.25
6326.00	44.000	261.660	6036.89	-123.37	-204.65	-730.79	1633508.00	256820.20	39°11'52.370"N	80°47'35.475"W	758.90	254.356	1.06
6388.00	43.940	260.770	6081.52	-135.39	-211.22	-773.33	1633465.46	256813.63	39°11'52.299"N	80°47'36.014"W	801.66	254.723	1.00
6451.00	43.950	259.320	6126.88	-146.74	-218.78	-816.39	1633422.41	256806.07	39°11'52.218"N	80°47'36.560"W	845.20	254.998	1.60
6514.00	43.940	259.440	6172.24	-157.60	-226.83	-859.36	1633379.44	256798.01	39°11'52.132"N	80°47'37.104"W	888.80	255.214	0.13
6577.00	43.650	251.840	6217.74	-165.65	-237.62	-901.54	1633337.26	256787.22	39°11'52.020"N	80°47'37.638"W	932.33	255.234	8.36
6609.00	43.280	244.250	6240.99	-166.82	-245.84	-921.93	1633316.87	256779.01	39°11'51.936"N	80°47'37.895"W	954.14	255.069	16.35
6640.00	42.850	237.500	6263.65	-165.30	-256.12	-940.40	1633298.40	256768.73	39°11'51.831"N	80°47'38.128"W	974.65	254.765	14.93
6674.00	43.600	231.240	6288.43	-161.00	-269.68	-959.30	1633279.50	256755.17	39°11'51.695"N	80°47'38.365"W	996.49	254.298	12.80
6703.00	44.870	227.070	6309.21	-155.47	-282.91	-974.59	1633264.21	256741.94	39°11'51.562"N	80°47'38.557"W	1014.82	253.813	10.94
6735.00	46.450	222.680	6331.58	-147.59	-299.13	-990.72	1633248.08	256725.72	39°11'51.399"N	80°47'38.759"W	1034.90	253.199	10.98
6766.00	47.600	219.010	6352.72	-138.31	-316.29	-1005.55	1633233.26	256708.56	39°11'51.228"N	80°47'38.944"W	1054.12	252.539	9.42
6800.00	49.250	214.860	6375.29	-126.34	-336.62	-1020.81	1633217.99	256688.24	39°11'51.024"N	80°47'39.134"W	1074.88	251.750	10.34

RECEIVED  
Office of Oil and Gas

JAN 27 2016

WV Department of  
Environmental Protection

02/12/2016

07/Aug/2015



# Actual Wellpath Report

515681 AWP Proj: 11380'

Page 6 of 12



Where energy meets innovation.

## REFERENCE WELLPATH IDENTIFICATION

Operator	EQT	Slot	Slot 03
Area	Doddridge Co., WV	Well	515681
Field	Doddridge	Wellbore	515681 AWB
Facility	OXF-127 Pad		

## WELLPATH DATA (185 stations)

MD [ft]	Inclination [°]	Azimuth [°]	TVD [ft]	Vert Sect [ft]	North [ft]	East [ft]	Grid East [US ft]	Grid North [US ft]	Latitude	Longitude	Closure Dist [ft]	Closure Dir [°]	DLS [°/100ft]
6829.00	50.320	211.560	6394.01	-114.67	-355.14	-1032.94	1633205.87	256669.71	39°11'50.840"N	80°47'39.285"W	1092.28	251.026	9.44
6860.00	51.260	207.840	6413.62	-100.79	-376.00	-1044.83	1633193.98	256648.85	39°11'50.632"N	80°47'39.432"W	1110.43	250.208	9.78
6892.00	53.100	204.530	6433.24	-84.94	-398.68	-1055.97	1633182.83	256626.17	39°11'50.406"N	80°47'39.570"W	1128.73	249.316	9.99
6923.00	54.700	201.400	6451.51	-68.17	-421.74	-1065.74	1633173.07	256603.11	39°11'50.177"N	80°47'39.689"W	1146.15	248.410	9.65
6955.00	55.540	199.160	6469.81	-49.70	-446.37	-1074.83	1633163.97	256578.49	39°11'49.932"N	80°47'39.800"W	1163.83	247.447	6.31
6990.00	56.700	195.590	6489.32	-28.23	-474.09	-1083.50	1633155.31	256550.77	39°11'49.657"N	80°47'39.905"W	1182.68	246.368	9.09
7018.00	57.710	192.580	6504.49	-9.97	-496.92	-1089.22	1633149.58	256527.94	39°11'49.430"N	80°47'39.974"W	1197.22	245.477	9.73
7050.00	59.540	189.200	6521.15	12.17	-523.74	-1094.38	1633144.43	256501.12	39°11'49.165"N	80°47'40.035"W	1213.24	244.425	10.68
7081.00	61.190	187.350	6536.48	34.69	-550.40	-1098.25	1633140.56	256474.46	39°11'48.901"N	80°47'40.079"W	1228.45	243.382	7.43
7113.00	62.960	185.010	6551.47	58.88	-578.51	-1101.29	1633137.52	256446.35	39°11'48.622"N	80°47'40.112"W	1243.99	242.287	8.50
7144.00	64.750	183.250	6565.13	83.19	-606.26	-1103.29	1633135.52	256418.60	39°11'48.348"N	80°47'40.133"W	1258.89	241.211	7.70
7175.00	66.630	182.050	6577.89	108.21	-634.48	-1104.59	1633134.21	256390.38	39°11'48.069"N	80°47'40.144"W	1273.85	240.127	7.02
7207.00	67.970	180.490	6590.24	134.69	-663.99	-1105.25	1633133.56	256360.87	39°11'47.777"N	80°47'40.147"W	1289.36	239.004	6.14
7238.00	69.000	177.450	6601.61	161.03	-692.82	-1104.72	1633134.08	256332.04	39°11'47.492"N	80°47'40.135"W	1304.00	237.906	9.71
7270.00	70.440	175.440	6612.71	188.97	-722.78	-1102.86	1633135.95	256302.08	39°11'47.196"N	80°47'40.106"W	1318.60	236.760	7.41
7302.00	73.400	172.980	6622.64	217.69	-753.04	-1099.79	1633139.02	256271.83	39°11'46.898"N	80°47'40.061"W	1332.89	235.600	11.79
7333.00	76.220	170.770	6630.76	246.32	-782.65	-1095.56	1633143.25	256242.22	39°11'46.606"N	80°47'40.002"W	1346.40	234.459	11.40
7365.00	78.170	167.440	6637.85	276.58	-813.28	-1089.66	1633149.15	256211.58	39°11'46.304"N	80°47'39.922"W	1359.70	233.264	11.84
7395.00	78.570	164.050	6643.90	305.44	-841.76	-1082.42	1633156.39	256183.11	39°11'46.023"N	80°47'39.824"W	1371.20	232.129	11.15
7428.00	80.360	160.680	6649.94	337.61	-872.67	-1072.59	1633166.21	256152.20	39°11'45.719"N	80°47'39.694"W	1382.75	230.868	11.41
7458.00	83.710	158.480	6654.09	367.22	-900.51	-1062.23	1633176.58	256124.36	39°11'45.446"N	80°47'39.557"W	1392.56	229.710	13.32
7490.00	87.880	156.460	6656.44	399.10	-929.98	-1050.00	1633188.81	256094.89	39°11'45.156"N	80°47'39.397"W	1402.62	228.469	14.47
7521.00	90.030	155.060	6657.01	430.09	-958.24	-1037.27	1633201.53	256066.64	39°11'44.879"N	80°47'39.230"W	1412.15	227.268	8.28
7584.00	89.940	152.150	6657.02	493.06	-1014.66	-1009.27	1633229.53	256010.21	39°11'44.325"N	80°47'38.864"W	1431.14	224.847	4.62
7647.00	89.940	149.870	6657.09	555.90	-1069.77	-978.74	1633260.06	255955.11	39°11'43.785"N	80°47'38.466"W	1449.94	222.456	3.62

RECEIVED  
Office of Oil and Gas

JAN 27 2016

WV Department of  
Environmental Protection

02/12/2016

07/Aug/2015



# Actual Wellpath Report

515681 AWP Proj: 11380'

Page 7 of 12



Where energy meets innovation.

## REFERENCE WELLPATH IDENTIFICATION

Operator	EQT	Slot	Slot 03
Area	Doddridge Co., WV	Well	515681
Field	Doddridge	Wellbore	515681 AWB
Facility	OXF-127 Pad		

## WELLPATH DATA (185 stations)

MD [ft]	Inclination [°]	Azimuth [°]	TVD [ft]	Vert Sect [ft]	North [ft]	East [ft]	Grid East [US ft]	Grid North [US ft]	Latitude	Longitude	Closure Dist [ft]	Closure Dir [°]	DLS [°/100ft]
7710.00	89.820	149.260	6657.22	618.62	-1124.08	-946.83	1633291.98	255900.79	39°11'43.253"N	80°47'38.051"W	1469.71	220.108	0.99
7773.00	90.000	151.330	6657.32	681.40	-1178.80	-915.61	1633323.19	255846.08	39°11'42.716"N	80°47'37.644"W	1492.62	217.838	3.30
7836.00	89.970	153.210	6657.34	744.33	-1234.56	-886.30	1633352.50	255790.32	39°11'42.169"N	80°47'37.262"W	1519.76	215.675	2.98
7898.00	89.970	154.590	6657.37	806.32	-1290.24	-859.02	1633379.78	255734.64	39°11'41.623"N	80°47'36.905"W	1550.04	213.655	2.23
7961.00	89.600	155.480	6657.60	869.32	-1347.35	-832.43	1633406.37	255677.53	39°11'41.062"N	80°47'36.557"W	1583.76	211.709	1.53
8024.00	89.480	156.090	6658.11	932.31	-1404.81	-806.59	1633432.21	255620.08	39°11'40.498"N	80°47'36.218"W	1619.90	209.863	0.99
8087.00	89.320	156.280	6658.77	995.29	-1462.44	-781.15	1633457.64	255562.45	39°11'39.932"N	80°47'35.885"W	1657.99	208.109	0.39
8150.00	89.110	155.590	6659.63	1058.28	-1519.96	-755.47	1633483.33	255504.93	39°11'39.367"N	80°47'35.548"W	1697.35	206.429	1.14
8213.00	89.200	154.930	6660.56	1121.27	-1577.17	-729.11	1633509.69	255447.72	39°11'38.806"N	80°47'35.203"W	1737.54	204.810	1.06
8276.00	89.940	154.870	6661.04	1184.27	-1634.22	-702.38	1633536.41	255390.68	39°11'38.246"N	80°47'34.853"W	1778.77	203.258	1.18
8339.00	90.180	154.360	6660.97	1247.26	-1691.14	-675.37	1633563.42	255333.76	39°11'37.687"N	80°47'34.500"W	1821.01	201.770	0.89
8402.00	90.180	153.780	6660.77	1310.26	-1747.79	-647.83	1633590.97	255277.11	39°11'37.131"N	80°47'34.139"W	1863.99	200.337	0.92
8465.00	90.030	154.250	6660.66	1373.25	-1804.42	-620.22	1633618.57	255220.48	39°11'36.575"N	80°47'33.778"W	1908.04	198.969	0.78
8528.00	90.060	154.330	6660.61	1436.24	-1861.19	-592.89	1633645.90	255163.72	39°11'36.018"N	80°47'33.421"W	1953.34	197.670	0.14
8591.00	90.090	155.580	6660.52	1499.24	-1918.26	-566.22	1633672.57	255106.64	39°11'35.458"N	80°47'33.072"W	2000.08	196.445	1.98
8654.00	90.370	154.530	6660.27	1562.24	-1975.38	-539.65	1633699.13	255049.52	39°11'34.897"N	80°47'32.724"W	2047.77	195.280	1.72
8717.00	90.430	153.710	6659.83	1625.23	-2032.06	-512.16	1633726.63	254992.84	39°11'34.341"N	80°47'32.364"W	2095.61	194.146	1.31
8780.00	90.590	153.680	6659.27	1688.21	-2088.54	-484.24	1633754.55	254936.37	39°11'33.787"N	80°47'32.000"W	2143.94	193.054	0.26
8847.00	90.550	153.790	6658.60	1755.19	-2148.62	-454.59	1633784.19	254876.29	39°11'33.197"N	80°47'31.612"W	2196.18	191.946	0.17
8907.00	90.580	153.720	6658.01	1815.17	-2202.43	-428.06	1633810.72	254822.48	39°11'32.669"N	80°47'31.265"W	2243.64	190.999	0.13
8971.00	90.550	152.980	6657.38	1879.14	-2259.63	-399.36	1633839.43	254765.29	39°11'32.108"N	80°47'30.890"W	2294.65	190.023	1.16
9035.00	90.650	152.710	6656.71	1943.09	-2316.57	-370.15	1633868.64	254708.35	39°11'31.549"N	80°47'30.509"W	2345.95	189.078	0.45
9096.00	90.860	153.370	6655.91	2004.05	-2370.94	-342.49	1633896.29	254653.98	39°11'31.016"N	80°47'30.148"W	2395.54	188.220	1.14
9158.00	89.420	153.640	6655.76	2066.03	-2426.42	-314.84	1633923.94	254598.50	39°11'30.472"N	80°47'29.787"W	2446.76	187.393	2.36
9221.00	89.510	155.040	6656.34	2129.02	-2483.20	-287.56	1633951.22	254541.72	39°11'29.914"N	80°47'29.430"W	2499.80	186.605	2.23

RECEIVED  
Office of Oil and Gas

JAN 27 2016

WV Department of  
Environmental Protection

02/12/2016

07/Aug/2015



# Actual Wellpath Report

515681 AWP Proj: 11380'

Page 8 of 12



Where energy meets innovation.

## REFERENCE WELLPATH IDENTIFICATION

Operator	EQT	Slot	Slot 03
Area	Doddridge Co., WV	Well	515681
Field	Doddridge	Wellbore	515681 AWB
Facility	OXF-127 Pad		

## WELLPATH DATA (185 stations)

MD [ft]	Inclination [°]	Azimuth [°]	TVD [ft]	Vert Sect [ft]	North [ft]	East [ft]	Grid East [US ft]	Grid North [US ft]	Latitude	Longitude	Closure Dist [ft]	Closure Dir [°]	DLS [°/100ft]
9286.00	89.660	156.310	6656.81	2194.01	-2542.43	-260.78	1633977.99	254482.49	39°11'29.333"N	80°47'29.079"W	2555.77	185.856	1.97
9346.00	89.450	158.580	6657.28	2253.95	-2597.84	-237.77	1634001.01	254427.09	39°11'28.789"N	80°47'28.777"W	2608.70	185.230	3.80
9408.00	89.450	158.940	6657.88	2315.82	-2655.62	-215.31	1634023.47	254369.31	39°11'28.221"N	80°47'28.481"W	2664.34	184.635	0.58
9472.00	89.480	158.050	6658.47	2379.69	-2715.16	-191.85	1634046.92	254309.77	39°11'27.635"N	80°47'28.172"W	2721.93	184.042	1.39
9534.00	90.400	158.220	6658.54	2441.60	-2772.70	-168.76	1634070.01	254252.23	39°11'27.070"N	80°47'27.868"W	2777.83	183.483	1.51
9598.00	90.030	157.080	6658.30	2505.53	-2831.89	-144.43	1634094.35	254193.04	39°11'26.489"N	80°47'27.548"W	2835.57	182.920	1.87
9661.00	89.690	155.260	6658.45	2568.51	-2889.52	-118.97	1634119.80	254135.42	39°11'25.923"N	80°47'27.215"W	2891.97	182.358	2.94
9724.00	89.230	153.850	6659.05	2631.51	-2946.41	-91.91	1634146.87	254078.53	39°11'25.364"N	80°47'26.861"W	2947.84	181.787	2.35
9787.00	89.170	153.420	6659.93	2694.48	-3002.85	-63.93	1634174.84	254022.09	39°11'24.811"N	80°47'26.495"W	3003.53	181.220	0.69
9851.00	89.170	152.360	6660.85	2758.43	-3059.81	-34.77	1634204.00	253965.13	39°11'24.252"N	80°47'26.114"W	3060.01	180.651	1.66
9913.00	89.200	152.710	6661.73	2820.37	-3114.81	-6.18	1634232.59	253910.13	39°11'23.712"N	80°47'25.741"W	3114.82	180.114	0.57
9976.00	89.140	153.230	6662.65	2883.32	-3170.93	22.45	1634261.22	253854.02	39°11'23.162"N	80°47'25.367"W	3171.01	179.594	0.83
10039.00	89.510	152.620	6663.39	2946.28	-3227.02	51.12	1634289.89	253797.93	39°11'22.611"N	80°47'24.993"W	3227.42	179.092	1.13
10102.00	90.180	155.020	6663.56	3009.26	-3283.55	78.91	1634317.68	253741.40	39°11'22.057"N	80°47'24.630"W	3284.50	178.623	3.96
10165.00	89.940	153.880	6663.49	3072.25	-3340.39	106.08	1634344.85	253684.56	39°11'21.499"N	80°47'24.274"W	3342.07	178.181	1.85
10227.00	89.940	151.230	6663.56	3134.19	-3395.41	134.66	1634373.42	253629.55	39°11'20.959"N	80°47'23.901"W	3398.08	177.729	4.27
10291.00	90.000	150.690	6663.59	3198.03	-3451.36	165.72	1634404.49	253573.60	39°11'20.411"N	80°47'23.497"W	3455.34	177.251	0.85
10354.00	89.630	153.170	6663.80	3260.94	-3506.95	195.37	1634434.13	253518.01	39°11'19.865"N	80°47'23.110"W	3512.38	176.811	3.98
10417.00	90.430	158.520	6663.76	3323.91	-3564.41	221.14	1634459.90	253460.55	39°11'19.301"N	80°47'22.772"W	3571.26	176.450	8.59
10480.00	91.940	163.720	6662.46	3386.51	-3623.98	241.51	1634480.27	253400.98	39°11'18.715"N	80°47'22.503"W	3632.02	176.187	8.59
10543.00	92.060	162.950	6660.26	3448.81	-3684.30	259.57	1634498.33	253340.66	39°11'18.122"N	80°47'22.263"W	3693.43	175.970	1.24
10606.00	92.090	160.130	6657.98	3511.35	-3744.01	279.50	1634518.26	253280.95	39°11'17.534"N	80°47'21.999"W	3754.43	175.731	4.47
10669.00	92.060	158.330	6655.70	3574.13	-3802.88	301.83	1634540.59	253222.09	39°11'16.956"N	80°47'21.704"W	3814.84	175.462	2.86
10732.00	90.280	155.770	6654.41	3637.07	-3860.87	326.38	1634565.14	253164.10	39°11'16.386"N	80°47'21.382"W	3874.64	175.168	4.95
10795.00	89.940	155.690	6654.29	3700.07	-3918.30	352.28	1634591.04	253106.67	39°11'15.822"N	80°47'21.043"W	3934.11	174.863	0.55

RECEIVED  
Office of Oil and Gas

JAN 27 2016

WV Department of  
Environmental Protection

02/12/2016

07/Aug/2015





# Actual Wellpath Report

515681 AWP Proj: 11380'

Page 9 of 12



Where energy meets innovation.

## REFERENCE WELLPATH IDENTIFICATION

Operator	EQT	Slot	Slot 03
Area	Doddridge Co., WV	Well	515681
Field	Doddridge	Wellbore	515681 AWB
Facility	OXF-127 Pad		

## WELLPATH DATA (185 stations)

MD [ft]	Inclination [°]	Azimuth [°]	TVD [ft]	Vert Sect [ft]	North [ft]	East [ft]	Grid East [US ft]	Grid North [US ft]	Latitude	Longitude	Closure Dist [ft]	Closure Dir [°]	DLS [°/100ft]
10858.00	89.970	155.130	6654.34	3763.07	-3975.59	378.49	1634617.25	253049.38	39°11'15.260"N	80°47'20.699"W	3993.57	174.562	0.89
10921.00	89.970	152.770	6654.37	3826.05	-4032.18	406.16	1634644.92	252992.79	39°11'14.704"N	80°47'20.338"W	4052.59	174.248	3.75
10984.00	89.940	151.050	6654.42	3888.96	-4087.76	435.82	1634674.58	252937.22	39°11'14.159"N	80°47'19.951"W	4110.93	173.914	2.73
11047.00	89.970	150.630	6654.47	3951.79	-4142.78	466.52	1634705.27	252882.20	39°11'13.620"N	80°47'19.551"W	4168.96	173.575	0.67
11110.00	89.940	151.990	6654.52	4014.66	-4198.04	496.76	1634735.52	252826.94	39°11'13.078"N	80°47'19.157"W	4227.33	173.251	2.16
11173.00	89.910	152.000	6654.60	4077.57	-4253.66	526.34	1634765.10	252771.32	39°11'12.533"N	80°47'18.771"W	4286.11	172.946	0.05
11236.00	89.970	151.490	6654.67	4140.47	-4309.16	556.17	1634794.92	252715.83	39°11'11.988"N	80°47'18.382"W	4344.90	172.646	0.82
11299.00	89.630	151.990	6654.89	4203.37	-4364.65	586.00	1634824.75	252660.34	39°11'11.444"N	80°47'17.993"W	4403.81	172.353	0.96
11361.00	89.910	152.200	6655.14	4265.29	-4419.44	615.01	1634853.76	252605.55	39°11'10.907"N	80°47'17.615"W	4462.03	172.078	0.56
11380.00	89.910	152.200	6655.17	4284.26	-4436.25	623.87	1634862.62	252588.74	39°11'10.742"N	80°47'17.499"W	4479.90	171.995	0.00

RECEIVED  
Office of Oil and Gas

JAN 27 2016

WV Department of  
Environmental Protection

02/12/2016

07/Aug/2015



# Actual Wellpath Report

515681 AWP Proj: 11380'

Page 10 of 12



Where energy meets innovation.

## REFERENCE WELLPATH IDENTIFICATION

Operator	EQT	Slot	Slot 03
Area	Doddridge Co., WV	Well	515681
Field	Doddridge	Wellbore	515681 AWB
Facility	OXF-127 Pad		

## TARGETS

Name	MD [ft]	TVD [ft]	North [ft]	East [ft]	Grid East [US ft]	Grid North [US ft]	Latitude	Longitude	Shape
515681 BHL Rev-1		6652.00	-4444.96	614.19	1634852.94	252580.03	39°11'10.655"N	80°47'17.621"W	point
515681 LP Rev-2		6652.00	-931.94	-1023.98	1633214.82	256092.93	39°11'45.140"N	80°47'39.066"W	point
OXF-127 Lease Lines Point 1		6800.00	-6288.07	3918.31	1638156.95	250736.98	39°10'52.905"N	80°46'35.331"W	point
OXF-127 Lease Lines Point 2		6800.00	-6715.27	4011.60	1638250.24	250309.80	39°10'48.697"N	80°46'34.069"W	point
OXF-127 Lease Lines Point 3		6800.00	-6945.39	4512.38	1638751.00	250079.68	39°10'46.493"N	80°46'27.669"W	point
OXF-127 Lease Lines Point 4		6800.00	-7098.28	4613.83	1638852.45	249926.80	39°10'44.996"N	80°46'26.353"W	point
OXF-127 Lease Lines Point 5		6800.00	-7860.29	4777.92	1639016.53	249164.81	39°10'37.488"N	80°46'24.133"W	point
OXF-127 Lease Lines Point 6		6800.00	-7976.36	4635.81	1638874.42	249048.75	39°10'36.321"N	80°46'25.916"W	point
OXF-127 Lease Lines Point 7		6800.00	-8378.68	4392.33	1638630.95	248646.44	39°10'32.311"N	80°46'28.935"W	point
OXF-127 Lease Lines Point 8		6800.00	-8823.05	3904.30	1638142.94	248202.09	39°10'27.851"N	80°46'35.051"W	point

RECEIVED  
Office of Oil and Gas

JAN 27 2016

WV Department of  
Environmental Protection

02/12/2016

07/Aug/2015



# Actual Wellpath Report

515681 AWP Proj: 11380'

Page 11 of 12



Where energy meets innovation.

## REFERENCE WELLPATH IDENTIFICATION

Operator	EQT	Slot	Slot 03
Area	Doddridge Co., WV	Well	515681
Field	Doddridge	Wellbore	515681 AWB
Facility	OXF-127 Pad		

## WELLPATH COMPOSITION - Ref Wellbore: 515681 AWB Ref Wellpath: 515681 AWP Proj: 11380'

Start MD [ft]	End MD [ft]	Positional Uncertainty Model	Log Name/Comment	Wellbore
16.00	4666.00	Gyrodata standard - Continuous gyro	01_Gyro Surveys (100'-4663')	515681 AWB
4666.00	11361.00	NaviTrak (AT Curve Short Spaced)	02_BHI AT Curve <8-1/2"> (4666')(4688'-11361')	515681 AWB
11361.00	11380.00	Blind Drilling (std)	Projection to bit	515681 AWB

RECEIVED  
Office of Oil and Gas

JAN 27 2016

WV Department of  
Environmental Protection

02/12/2016

07/Aug/2015



Where energy meets innovation.

# Actual Wellpath Report

515681 AWP Proj: 11380'

Page 12 of 12



## REFERENCE WELLPATH IDENTIFICATION

Operator	EQT	Slot	Slot 03
Area	Doddridge Co., WV	Well	515681
Field	Doddridge	Wellbore	515681 AWB
Facility	OXF-127 Pad		

## COMMENTS

### Wellpath general comments

API: 47-017-06610-0000

Rig: Savanna 655

BHI Job #: 7403525

Duration: 07.27.2015 - 08.03.2015

Gyro Surveys (100'-4663')

BHI AT Curve &lt;8-1/2"&gt; (4666')(4688'-11361')

Projected MD at TD: 11380'

RECEIVED  
Office of Oil and Gas

JAN 27 2016

WV Department of  
Environmental Protection

02/12/2016

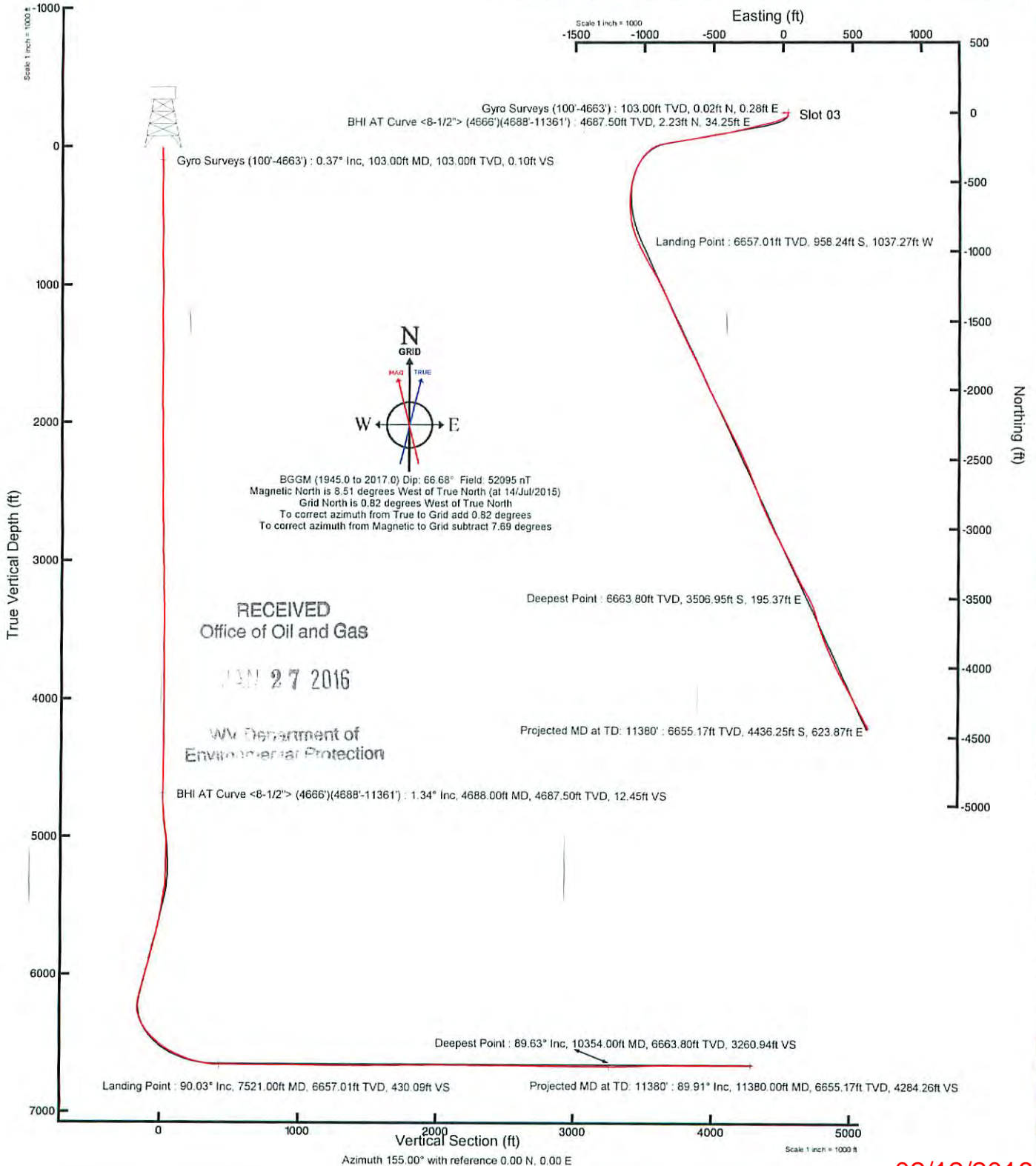
07/Aug/2015

Location: Doddridge Co., WV  
 Field: Doddridge  
 Facility: OXF-127 Pad

Slot: Slot 03  
 Well: 515681  
 Wellbore: 515681 PWB

Plot reference wellbore is 515681 PWB Rev. E.0	
True vertical depths are referenced to Savannah 655 (RKB)	Grid System: NAD27 / Lambert West Virginia SP, Northern Zone (4701) US feet
Measured depths are referenced to Savannah 655 (RKB)	North Reference: Grid north
Savannah 655 (RKB) to Mean Sea Level: 1258 feet	Scale: True distance
Mean Sea Level to Mud line (At Slot: Slot 03): 1242 feet	Depths are in feet
Coordinates are in feet referenced to Slot	Created by: gufford on 17/Aug/2015

Location Information					
Facility Name	Grid East (US ft)	Grid North (US ft)	Latitude	Longitude	
OXF-127 Pad	1634226.310	257052.130	39°11'54.764"N	80°47'26.394"W	
Slot	Local N (ft)	Local E (ft)	Grid East (US ft)	Grid North (US ft)	Longitude
Slot 03	-27.29	12.46	1634238.770	257024.840	39°11'54.496"N 80°47'26.231"W
Savannah 655 (RKB) to Mud line (At Slot: Slot 03)	16ft				
Mean Sea Level to Mud line (At Slot: Slot 03)	-1242ft				
Savannah 655 (RKB) to Mean Sea Level	1258ft				



RECEIVED  
Office of Oil and Gas

JAN 27 2016

WV Department of  
Environmental Protection