

17-06503

PHOENIX
TECHNOLOGY SERVICES



EQT Production - Marcellus

Doddridge County, WV Grid

Doddridge County 513153

Well #513153

Main Wellbore

Design: 513153 As Drilled

Standard Survey Report

14 May, 2015

Received
Office of Oil & Gas
OCT 08 2015

EQT
Where energy meets innovation.

10/30/2015

17-06503



Database:	EDM 5000.1 Single User Db	Local Co-ordinate Reference:	Site Doddridge County 513153
Company:	EQT Production - Marketing	TVD Reference:	KB@23 @ 1275.0usft
Project:	Doddridge County, WV Grid	MD Reference:	KB@23 @ 1275.0usft
Site:	Doddridge County 513153	North Reference:	Grid
Well:	Well #513153	Survey Calculation Method:	Minimum Curvature
Wellbore:	Main Wellbore		
Design:	513153 Air Drilled		

Project Doddridge County, WV Grid

Map System:	US State Plane 1927 (Exact solution)	System Datum:	Mean Sea Level
Geo Datum:	NAD 1927 (NADCON CONUS)		
Map Zone:	West Virginia North 4701		Using geodetic scale factor

Site Doddridge County 513153

Site Position:		Northing:	260,323.30 usft	Latitude:	39.21
From:	Map	Easting:	1,642,296.70 usft	Longitude:	-80.76
Position Uncertainty:	0.0 usft	Slot Radius:	13-3/16 "	Grid Convergence:	-0.81 °

Well Well #513153

Well Position	+N-S	0.0 usft	Northing:	260,323.30 usft	Latitude:	39° 12' 28.227 N
	+E-W	0.0 usft	Easting:	1,642,296.70 usft	Longitude:	80° 45' 44.474 W
Position Uncertainty		0.0 usft	Wellhead Elevation:	usft	Ground Level:	1,252.0 usft

Wellbore Main Wellbore

Magnetics	Model Name	Sample Date	Declination (°)	Dip Angle (°)	Field Strength (nT)
	HDGM	4/21/2015	-7.78	66.68	52,235

Received
Office of Oil & Gas

Design 513153 Air Drilled

Audit Notes:

Version:	1.0	Phase:	ACTUAL	Tie On Depth:	0.0
-----------------	-----	---------------	--------	----------------------	-----

Vertical Section:	Depth From (TVD) (usft)	+N-S (usft)	+E-W (usft)	Direction (°)
	0.0	0.0	0.0	335.34

Survey Program Date 5/14/2015

From (')	To (usft)	Survey (Wellbore)	Tool Name	Description
0.00	5,410.0	513153 Gyrodata Gyro (Main Wellbore)	GYD_DP_MS	Gyrodata gyro-compassing and drop
0.00	14,720.0	513153 PHX MWD (Main Wellbore)	PHX+MWD+HDGM	PHX+OWSG MWD + HDGM

Survey

Measured Depth (usft)	Inclination (°)	Azimuth (°)	Vertical Depth (usft)	Subsea Depth (usft)	+N-S (usft)	+E-W (usft)	Vertical Section (usft)	Dogleg Rate (°/100usft)	Build Rate (°/100usft)	Turn Rate (°/100usft)
0.0	0.00	0.00	0.0	-1,275.0	0.0	0.0	0.0	0.00	0.00	0.00
110.0	0.16	294.33	110.0	-1,165.0	0.1	-0.1	0.1	0.15	0.15	0.00
210.0	0.12	312.16	210.0	-1,065.0	0.2	-0.3	0.3	0.06	-0.04	17.83
310.0	0.15	291.39	310.0	-965.0	0.3	-0.5	0.5	0.06	0.03	-20.77
410.0	0.16	276.38	410.0	-865.0	0.4	-0.8	0.7	0.04	0.01	-15.01
510.0	0.16	282.07	510.0	-765.0	0.4	-1.1	0.8	0.02	0.00	5.69
610.0	0.12	290.05	610.0	-665.0	0.5	-1.3	1.0	0.04	-0.04	7.98
710.0	0.13	289.98	710.0	-565.0	0.6	-1.5	1.1	0.01	0.01	-0.07



Database:	EQM 5000.1 Build 73	Local Co-ordinate Reference:	State Coordinate County 113783
Company:	EQM Production Services	TVD Reference:	489623 2 317 0001
Project:	Goodnight County, WV 700	MD Reference:	489623 2 1075 0001
Site:	Goodnight County 713783	North Reference:	310
Well:	Well 151151	Survey Calculation Method:	APPROX CORRECTION
Wellbore:	Maxi Wellbore		
Design:	3.18182 18.0000		

Survey											
Measured Depth (usft)	Inclination (°)	Azimuth (°)	Vertical Depth (usft)	Subsea Depth (usft)	+N/-S (usft)	+E/-W (usft)	Vertical Section (usft)	Dogleg Rate (°/100usft)	Build Rate (°/100usft)	Turn Rate (°/100usft)	
810.0	0.10	277.80	810.0	-465.0	0.6	-1.7	1.3	0.04	-0.03	-12.18	
910.0	0.21	268.30	910.0	-365.0	0.6	-2.0	1.4	0.11	0.11	-9.50	
1,010.0	0.55	268.96	1,010.0	-265.0	0.6	-2.6	1.6	0.34	0.34	0.66	
1,110.0	0.59	276.20	1,110.0	-165.0	0.6	-3.6	2.1	0.08	0.04	7.24	
1,210.0	0.63	301.24	1,210.0	-65.0	1.0	-4.6	2.8	0.27	0.04	25.04	
1,310.0	1.04	296.82	1,310.0	35.0	1.7	-5.9	4.0	0.41	0.41	-4.42	
1,410.0	1.18	297.35	1,410.0	135.0	2.6	-7.6	5.5	0.14	0.14	0.53	
1,510.0	1.40	299.17	1,509.9	234.9	3.6	-9.6	7.3	0.22	0.22	1.82	
1,610.0	1.29	299.17	1,609.9	334.9	4.8	-11.7	9.2	0.11	-0.11	0.00	
1,710.0	1.29	299.24	1,709.9	434.9	5.9	-13.6	11.0	0.00	0.00	0.07	
1,810.0	1.31	300.39	1,809.9	534.9	7.0	-15.6	12.9	0.03	0.02	1.15	
1,910.0	1.33	301.65	1,909.8	634.8	8.2	-17.6	14.8	0.04	0.02	1.26	
2,010.0	1.35	297.78	2,009.8	734.8	9.3	-19.6	16.7	0.09	0.02	-3.87	
2,110.0	1.40	296.91	2,109.8	834.8	10.5	-21.7	18.6	0.05	0.05	-0.87	
2,210.0	1.50	296.79	2,209.7	934.7	11.6	-24.0	20.5	0.10	0.10	-0.12	
2,310.0	1.57	297.76	2,309.7	1,034.7	12.8	-26.4	22.7	0.07	0.07	0.97	
2,410.0	1.58	297.64	2,409.7	1,134.7	14.1	-28.8	24.8	0.01	0.01	-0.12	
2,510.0	1.64	300.44	2,509.6	1,234.6	15.5	-31.3	27.1	0.10	0.06	2.80	
2,610.0	1.67	301.59	2,609.6	1,334.6	17.0	-33.7	29.5	0.04	0.03	1.15	
2,710.0	1.72	303.07	2,709.5	1,434.5	18.5	-36.2	32.0	0.07	0.05	1.48	
2,810.0	1.78	304.36	2,809.5	1,534.5	20.2	-38.8	34.6	0.07	0.06	1.29	
2,910.0	1.87	306.45	2,909.4	1,634.4	22.1	-41.4	37.3	0.11	0.09	2.09	
3,010.0	1.91	305.74	3,009.4	1,734.4	24.0	-44.0	40.2	0.05	0.04	-0.71	
3,110.0	1.95	305.37	3,109.3	1,834.3	26.0	-46.8	43.1	0.04	0.04	-0.37	
3,210.0	2.06	302.42	3,209.3	1,934.3	27.9	-49.7	46.1	0.15	0.11	-2.95	
3,310.0	2.15	302.58	3,309.2	2,034.2	29.9	-52.8	49.2	0.09	0.09	0.16	
3,410.0	2.25	305.41	3,409.1	2,134.1	32.0	-55.9	52.5	0.15	0.10	2.83	
3,510.0	2.36	306.95	3,509.0	2,234.0	34.4	-59.2	56.0	0.13	0.11	1.54	
3,610.0	2.36	309.08	3,609.0	2,334.0	37.0	-62.4	59.6	0.09	0.00	2.13	
3,710.0	2.42	310.17	3,708.9	2,433.9	39.6	-65.6	63.4	0.08	0.06	1.09	
3,810.0	2.70	309.33	3,808.8	2,533.8	42.5	-69.1	67.4	0.28	0.28	-0.84	
3,910.0	3.78	303.69	3,908.6	2,633.6	45.8	-73.6	72.3	1.12	1.08	-5.64	
4,010.0	4.73	304.44	4,008.3	2,733.3	50.0	-79.8	78.7	0.95	0.95	0.75	
4,110.0	5.46	306.43	4,107.9	2,832.9	55.1	-87.0	86.4	0.75	0.73	1.99	
4,210.0	5.71	306.72	4,207.5	2,932.5	60.9	-94.8	94.9	0.25	0.25	0.29	
4,310.0	5.86	309.13	4,307.0	3,032.0	67.1	-102.8	103.9	0.29	0.15	2.41	
4,410.0	5.86	311.78	4,406.4	3,131.4	73.7	-110.5	113.1	0.27	0.00	2.65	
4,510.0	6.04	315.11	4,505.9	3,230.9	80.9	-118.1	122.7	0.39	0.18	3.33	
4,610.0	6.14	319.99	4,605.3	3,330.3	88.7	-125.2	132.8	0.53	0.10	4.88	
4,710.0	6.22	324.34	4,704.8	3,429.8	97.2	-131.8	143.3	0.47	0.08	4.35	
4,810.0	6.05	327.79	4,804.2	3,529.2	106.0	-137.8	153.8	0.41	-0.17	3.45	
4,910.0	5.89	330.81	4,903.6	3,628.6	115.0	-143.1	164.2	0.35	-0.16	3.02	

Received
Office of Oil & Gas
OCT 08 2015

17-06503



Database: EDM 6000.1 Build 6 User Doc	Local Co-ordinate Reference: 543152 NAD 83
Company: EQT Production - Marcellus	TVD Reference: 543152 NAD 83
Project: Ludington County, WY/OK	MD Reference: 543152 NAD 83
Site: Ludington County, WY/OK	North Reference: 543152 NAD 83
Well: 543152	Survey Calculation Method: Minimum Curvature
Wellbore: Main Wellbore	
Design: 543152 NAD 83	

Measured Depth (usft)	Inclination (°)	Azimuth (°)	Vertical Depth (usft)	Subsea Depth (usft)	+N/-S (usft)	+E/-W (usft)	Vertical Section (usft)	Dogleg Rate (°/100usft)	Build Rate (°/100usft)	Turn Rate (°/100usft)
5,010.0	5.73	332.99	5,003.1	3,728.1	123.9	-147.9	174.3	0.27	-0.16	2.18
5,110.0	5.44	337.04	5,102.6	3,827.6	132.7	-152.0	184.0	0.49	-0.29	4.05
5,210.0	5.51	337.64	5,202.2	3,927.2	141.5	-155.7	193.6	0.09	0.07	0.60
5,310.0	5.11	340.76	5,301.8	4,026.8	150.2	-158.9	202.8	0.49	-0.40	3.12
Part 116 to 5410 MD										
5,410.0	4.45	359.07	5,401.4	4,126.4	158.2	-160.5	210.8	1.65	-0.66	18.31
5,474.0	4.00	49.30	5,465.3	4,190.3	162.2	-158.8	213.7	5.64	-0.70	78.48
5,505.0	7.30	94.90	5,496.1	4,221.1	162.7	-156.0	213.0	17.19	10.65	147.10
5,537.0	12.10	110.20	5,527.7	4,252.7	161.4	-150.9	209.6	16.90	15.00	47.81
5,569.0	15.90	118.60	5,558.7	4,283.7	158.1	-143.9	203.7	13.44	11.88	26.25
5,600.0	17.30	127.40	5,588.4	4,313.4	153.3	-136.5	196.3	9.27	4.52	28.39
5,631.0	17.90	140.70	5,618.0	4,343.0	146.8	-129.8	187.6	13.09	1.94	42.90
5,663.0	20.40	147.30	5,648.2	4,373.2	138.3	-123.7	177.3	10.32	7.81	20.63
5,695.0	22.90	146.80	5,678.0	4,403.0	128.4	-117.2	165.6	7.83	7.81	-1.56
5,726.0	23.70	150.40	5,706.4	4,431.4	117.9	-110.9	153.4	5.27	2.58	11.61
KOP=5747 MD										
5,747.0	24.92	151.92	5,725.6	4,450.6	110.4	-106.7	144.8	6.51	5.79	7.25
5,757.0	25.50	152.60	5,734.6	4,459.6	106.6	-104.7	140.6	6.51	5.84	6.77
5,789.0	27.90	152.40	5,763.2	4,488.2	93.8	-98.1	126.2	7.51	7.50	-0.63
5,821.0	30.20	150.50	5,791.2	4,516.2	80.2	-90.6	110.7	7.74	7.19	-5.94
5,852.0	32.40	149.10	5,817.7	4,542.7	66.3	-82.5	94.7	7.47	7.10	-4.52
5,884.0	32.00	146.60	5,844.7	4,569.7	51.9	-73.5	77.8	4.35	-1.25	-7.10
5,915.0	28.40	144.40	5,871.5	4,596.5	39.0	-64.6	62.4	12.15	-11.61	-5.63
5,947.0	24.80	142.60	5,900.1	4,625.1	27.5	-56.1	48.4	11.53	-11.25	-10.63
5,979.0	20.40	139.20	5,929.7	4,654.7	17.9	-48.4	36.5	14.34	-13.75	-13.55
6,010.0	16.70	135.00	5,959.1	4,684.1	10.7	-41.7	27.1	12.68	-11.94	-23.13
6,042.0	14.20	127.60	5,989.9	4,714.9	5.0	-35.4	19.3	9.93	-7.81	-33.13
6,074.0	11.90	117.00	6,021.1	4,746.1	1.1	-29.3	13.3	10.35	-7.19	-38.44
6,106.0	9.50	104.70	6,052.5	4,777.5	-1.0	-23.8	9.0	10.31	-7.50	-43.55
6,137.0	7.40	91.20	6,083.2	4,808.2	-1.7	-19.4	6.5	9.28	-6.77	-76.77
6,168.0	5.70	67.40	6,114.0	4,839.0	-1.2	-15.9	5.6	10.22	-5.48	-47.50
6,200.0	5.40	52.20	6,145.8	4,870.8	0.4	-13.3	5.9	4.67	-0.94	-13.23
6,231.0	5.30	48.10	6,176.7	4,901.7	2.2	-11.1	6.6	1.27	-0.32	-25.31
6,263.0	5.30	40.00	6,208.6	4,933.6	4.3	-9.0	7.7	2.34	0.00	-34.19
6,294.0	6.70	29.40	6,239.4	4,964.4	7.0	-7.2	9.4	5.74	4.52	-21.25
6,326.0	8.50	22.60	6,271.1	4,996.1	10.8	-5.4	12.1	6.28	5.63	-40.63
6,358.0	11.10	9.60	6,302.7	5,027.7	16.0	-4.0	16.2	10.62	8.13	-33.23
6,389.0	14.00	359.30	6,332.9	5,057.9	22.7	-3.5	22.1	11.78	9.35	-22.50
6,421.0	16.30	352.10	6,363.8	5,088.8	31.0	-4.2	30.0	9.27	7.19	-21.94
6,452.0	18.50	345.30	6,393.4	5,118.4	40.1	-6.0	39.0	9.65	7.10	-6.77
6,483.0	21.00	343.20	6,422.6	5,147.6	50.2	-8.9	49.3	8.38	8.06	-2.19
6,515.0	24.00	342.50	6,452.1	5,177.1	61.9	-12.5	61.5	9.41	9.38	0.65
6,546.0	27.40	342.70	6,480.1	5,205.1	74.7	-16.5	74.8	10.97	10.97	

Received
Office of Oil & Gas
OCT 08 2015

17-06503



Database:	ECM 2000.1 Single Well DE	Local Co-ordinate Reference:	534 Ordinance County 513153
Company:	EQT Production - Marcellus	TVD Reference:	KB003 to 1275 Duff
Project:	Doodridge County, WV 513153	MD Reference:	KB0029 to 1275 Duff
Site:	Doodridge County 513153	North Reference:	420
Well:	Well 1612163	Survey Calculation Method:	Minimum Curvature
Wellbore:	Marcellus		
Design:	513153-A-00001		

Measured Depth (usft)	Inclination (°)	Azimuth (°)	Vertical Depth (usft)	Subsea Depth (usft)	+N-S (usft)	+E-W (usft)	Vertical Section (usft)	Dogleg Rate (°/100usft)	Build Rate (°/100usft)	Turn Rate (°/100usft)
6,578.0	31.30	343.10	6,507.9	5,232.9	89.7	-21.1	90.3	12.20	12.19	1.25
6,610.0	34.50	344.10	6,534.8	5,259.8	106.4	-26.0	107.5	10.14	10.00	3.13
6,642.0	38.60	343.50	6,560.5	5,285.5	124.7	-31.3	126.4	12.86	12.81	-1.88
6,673.0	42.60	342.10	6,584.0	5,309.0	143.9	-37.3	146.4	13.23	12.90	-4.52
6,704.0	46.50	341.40	6,606.1	5,331.1	164.6	-44.1	168.0	12.68	12.58	-2.26
6,736.0	51.00	341.70	6,627.2	5,352.2	187.4	-51.7	191.9	14.08	14.06	0.94
6,767.0	55.10	342.00	6,645.8	5,370.8	210.9	-59.4	216.5	13.25	13.23	0.97
6,799.0	58.70	342.60	6,663.3	5,388.3	236.5	-67.6	243.1	11.36	11.25	1.88
6,831.0	62.60	342.20	6,679.0	5,404.0	263.1	-76.0	270.8	12.24	12.19	-1.25
6,884.0	67.00	341.50	6,701.6	5,426.6	308.6	-91.0	318.4	8.39	8.30	-1.32
6,925.0	71.10	338.40	6,716.2	5,441.2	344.6	-104.1	356.6	12.24	10.00	-7.56
6,957.0	73.90	336.10	6,725.8	5,450.8	372.7	-115.9	387.1	11.11	8.75	-7.19
6,989.0	76.50	334.40	6,734.0	5,459.0	400.8	-128.8	418.0	9.61	8.13	-5.31
7,020.0	79.30	334.50	6,740.5	5,465.5	428.1	-141.9	448.3	9.04	9.03	0.32
7,051.0	82.50	334.60	6,745.4	5,470.4	455.8	-155.1	478.9	10.33	10.32	0.32
7,084.0	85.20	334.60	6,749.0	5,474.0	485.4	-169.1	511.7	8.18	8.18	0.00
7,116.0	86.00	334.90	6,751.4	5,476.4	514.3	-182.8	543.6	2.67	2.50	0.94
7,178.0	87.20	335.00	6,755.1	5,480.1	570.3	-209.0	605.5	1.94	1.94	0.16
7,272.0	89.40	334.80	6,757.9	5,482.9	655.4	-248.8	699.5	2.35	2.34	-0.21
7,367.0	89.60	334.10	6,758.7	5,483.7	741.1	-289.8	794.4	0.77	0.21	-0.74
7,461.0	91.30	335.00	6,758.0	5,483.0	826.0	-330.2	888.4	2.05	1.81	0.96
7,556.0	91.10	332.70	6,756.0	5,481.0	911.2	-372.0	983.4	2.43	-0.21	-2.42
7,650.0	91.60	332.60	6,753.8	5,478.8	994.7	-415.2	1,077.2	0.54	0.53	-0.11
7,744.0	92.00	334.80	6,750.8	5,475.8	1,078.9	-456.8	1,171.1	2.38	0.43	2.34
7,838.0	91.90	333.90	6,747.6	5,472.6	1,163.6	-497.5	1,265.1	0.96	-0.11	-0.96
7,933.0	92.10	334.50	6,744.3	5,469.3	1,249.1	-538.8	1,360.0	0.67	0.21	0.63
8,027.0	91.70	332.60	6,741.2	5,466.2	1,333.2	-580.7	1,453.9	2.06	-0.43	-2.02
8,122.0	92.40	335.50	6,737.8	5,462.8	1,418.6	-622.2	1,548.8	3.14	0.74	3.05
8,216.0	91.60	333.90	6,734.5	5,459.5	1,503.5	-662.4	1,642.7	1.90	-0.85	-1.70
8,310.0	91.40	333.90	6,732.0	5,457.0	1,587.9	-703.7	1,736.7	0.21	-0.21	0.00
8,405.0	93.20	335.50	6,728.2	5,453.2	1,673.7	-744.3	1,831.6	2.53	1.89	1.68
8,499.0	93.20	333.90	6,723.0	5,448.0	1,758.5	-784.4	1,925.4	1.70	0.00	-1.70
8,593.0	93.30	337.20	6,717.6	5,442.6	1,844.0	-823.2	2,019.3	3.51	0.11	3.51
8,688.0	93.10	335.80	6,712.3	5,437.3	1,930.9	-861.0	2,114.1	1.49	-0.21	-1.47
8,782.0	90.70	331.80	6,709.2	5,434.2	2,015.2	-902.5	2,208.0	4.96	-2.55	-4.26
8,877.0	91.40	334.30	6,707.5	5,432.5	2,099.9	-945.5	2,302.9	2.73	0.74	2.63
8,971.0	91.80	336.60	6,704.9	5,429.9	2,185.3	-984.6	2,396.8	2.48	0.43	2.45
9,066.0	92.00	336.20	6,701.7	5,426.7	2,272.3	-1,022.6	2,491.8	0.47	0.21	-0.42
9,161.0	92.00	335.90	6,698.4	5,423.4	2,359.1	-1,061.1	2,586.7	0.32	0.00	-0.32
9,255.0	90.90	333.40	6,696.0	5,421.0	2,444.0	-1,101.4	2,680.7	2.90	-1.17	-2.66
9,350.0	91.80	336.20	6,693.8	5,418.8	2,530.0	-1,141.8	2,775.6	3.10	0.95	2.95

Received
Office of Oil & Gas
OCT 08 2015

17-06503



Database:	EDM 5000.1 Build 73	Local Co-ordinate Reference:	EDM 5000.1 Build 73
Company:	EQT Technology Services	TVD Reference:	EDM 5000.1 Build 73
Project:	Oriskany Gas Well	MD Reference:	EDM 5000.1 Build 73
Site:	Oriskany County, NY	North Reference:	EDM 5000.1 Build 73
Well:	WEL17-215	Survey Calculation Method:	EDM 5000.1 Build 73
Wellbore:	Met Wellbore		
Design:	5115-AS-DW1		

Measured Depth (usft)	Inclination (°)	Azimuth (°)	Vertical Depth (usft)	Subsea Depth (usft)	+N/-S (usft)	+E/-W (usft)	Vertical Section (usft)	Dogleg Rate (°/100usft)	Build Rate (°/100usft)	Turn Rate (°/100usft)
9,445.0	90.60	334.80	6,691.8	5,416.8	2,616.4	-1,181.2	2,870.6	1.94	-1.26	-1.47
9,539.0	90.50	334.70	6,690.9	5,415.9	2,701.4	-1,221.3	2,964.6	0.15	-0.11	-0.11
9,634.0	90.40	334.20	6,690.1	5,415.1	2,787.1	-1,262.2	3,059.6	0.54	-0.11	-0.53
9,728.0	91.20	336.20	6,688.8	5,413.8	2,872.4	-1,301.7	3,153.6	2.29	0.85	2.13
9,822.0	90.90	335.80	6,687.1	5,412.1	2,958.3	-1,339.9	3,247.5	0.53	-0.32	-0.43
9,916.0	91.30	336.90	6,685.3	5,410.3	3,044.4	-1,377.6	3,341.5	1.24	0.43	1.17
10,010.0	91.80	337.70	6,682.8	5,407.8	3,131.0	-1,413.9	3,435.4	1.00	0.53	0.85
10,105.0	91.30	335.40	6,680.2	5,405.2	3,218.2	-1,451.6	3,530.3	2.48	-0.53	-2.42
10,199.0	90.80	332.60	6,678.5	5,403.5	3,302.6	-1,492.8	3,624.3	3.03	-0.53	-2.98
10,294.0	91.60	336.30	6,676.5	5,401.5	3,388.3	-1,533.8	3,719.2	3.98	0.84	3.89
10,388.0	91.50	335.10	6,673.9	5,398.9	3,473.9	-1,572.5	3,813.2	1.28	-0.11	-1.28
10,483.0	91.00	333.90	6,671.9	5,396.9	3,559.7	-1,613.4	3,908.2	1.37	-0.53	-1.28
10,577.0	91.10	336.80	6,670.1	5,395.1	3,645.1	-1,652.5	4,002.1	3.09	0.11	3.09
10,672.0	91.10	337.90	6,668.3	5,393.3	3,732.7	-1,689.1	4,097.1	1.16	0.00	1.16
10,767.0	91.30	339.60	6,666.3	5,391.3	3,821.3	-1,723.5	4,191.9	1.80	0.21	1.79
10,862.0	91.20	337.70	6,664.2	5,389.2	3,909.7	-1,758.1	4,286.7	2.00	-0.11	-2.00
10,956.0	91.00	337.40	6,662.4	5,387.4	3,996.6	-1,794.0	4,380.6	0.38	-0.21	-0.32
11,051.0	90.40	335.90	6,661.3	5,386.3	4,083.8	-1,831.7	4,475.6	1.70	-0.63	-1.58
11,145.0	91.50	336.30	6,659.7	5,384.7	4,169.7	-1,869.7	4,569.5	1.25	1.17	0.43
11,239.0	91.10	335.80	6,657.6	5,382.6	4,255.6	-1,907.9	4,663.5	0.68	-0.43	-0.53
11,334.0	90.30	332.90	6,656.4	5,381.4	4,341.2	-1,949.0	4,758.5	3.17	-0.84	-3.05
11,428.0	92.30	332.90	6,654.3	5,379.3	4,424.9	-1,991.8	4,852.4	2.13	2.13	0.00
11,523.0	92.20	332.60	6,650.6	5,375.6	4,509.3	-2,035.3	4,947.2	0.33	-0.11	-0.32
11,617.0	92.50	332.00	6,646.7	5,371.7	4,592.4	-2,078.9	5,041.0	0.71	0.32	-0.64
11,712.0	90.70	332.30	6,644.1	5,369.1	4,676.4	-2,123.3	5,135.8	1.92	-1.89	0.32
11,806.0	90.50	331.80	6,643.1	5,368.1	4,759.4	-2,167.3	5,229.6	0.57	-0.21	-0.53
11,901.0	90.00	331.10	6,642.7	5,367.7	4,842.8	-2,212.8	5,324.4	0.91	-0.53	-0.74
11,995.0	90.10	334.40	6,642.6	5,367.6	4,926.4	-2,255.8	5,418.3	3.51	0.11	3.51
12,090.0	90.20	335.20	6,642.3	5,367.3	5,012.4	-2,296.2	5,513.3	0.85	0.11	0.84
12,184.0	89.90	334.00	6,642.3	5,367.3	5,097.3	-2,336.6	5,607.3	1.32	-0.32	-1.28
12,279.0	90.30	333.20	6,642.1	5,367.1	5,182.4	-2,378.8	5,702.2	0.94	0.42	-0.84
12,373.0	90.00	335.60	6,641.8	5,366.8	5,267.1	-2,419.4	5,796.2	2.57	-0.32	2.55
12,468.0	89.30	335.50	6,642.4	5,367.4	5,353.6	-2,458.7	5,891.2	0.74	-0.74	-0.11
12,563.0	88.40	332.90	6,644.3	5,369.3	5,439.1	-2,500.1	5,986.2	2.90	-0.95	-2.74
12,657.0	89.00	336.00	6,646.5	5,371.5	5,523.9	-2,540.6	6,080.1	3.36	0.64	3.30
12,752.0	88.80	334.90	6,648.3	5,373.3	5,610.3	-2,580.0	6,175.1	1.18	-0.21	-1.16
12,846.0	90.30	336.60	6,649.0	5,374.0	5,696.0	-2,618.7	6,269.1	2.41	1.60	1.81
12,940.0	90.20	335.40	6,648.6	5,373.6	5,781.9	-2,656.9	6,363.1	1.28	-0.11	-1.28
13,035.0	90.20	335.80	6,648.3	5,373.3	5,868.4	-2,696.1	6,458.1	0.42	0.00	0.42
13,129.0	90.20	335.50	6,648.0	5,373.0	5,954.0	-2,734.9	6,552.1	0.32	0.00	-0.32
13,224.0	90.10	334.80	6,647.7	5,372.7	6,040.2	-2,774.8	6,647.1	0.74	-0.11	-0.74
13,318.0	90.10	333.50	6,647.5	5,372.5	6,124.8	-2,815.8	6,741.1	1.38	0.00	-1.38
13,413.0	88.40	335.10	6,648.8	5,373.8	6,210.4	-2,857.0	6,836.0	2.46	-1.79	1.68

Received
Office of Oil & Gas
OCT 08 2015

17-06503



Database: EDM 5000 - Single User DB	Local Co-ordinate Reference: Site Goodridge County 513153
Company: EQT Production - Marcellus	TVD Reference: KR-023 @ 1275.0usft
Project: Doddridge County, WV Grid	MD Reference: KR-003 @ 1275.0usft
Site: Doddridge County 513153	North Reference: Unit
Well: Well W#13103	Survey Calculation Method: Minimum Curvature
Wellbore: Main Wellbore	
Design: 513153 Av Drilled	

Measured Depth (usft)	Inclination (°)	Azimuth (°)	Vertical Depth (usft)	Subsea Depth (usft)	+N/-S (usft)	+E/-W (usft)	Vertical Section (usft)	Dogleg Rate (°/100usft)	Build Rate (°/100usft)	Turn Rate (°/100usft)
13,508.0	88.40	335.60	6,651.4	5,376.4	6,296.7	-2,896.6	6,931.0	0.53	0.00	0.53
13,603.0	88.30	335.30	6,654.2	5,379.2	6,383.1	-2,936.0	7,025.9	0.33	-0.11	-0.32
13,697.0	88.00	333.90	6,657.2	5,382.2	6,467.9	-2,976.3	7,119.9	1.52	-0.32	-1.49
13,791.0	88.10	333.50	6,660.4	5,385.4	6,552.2	-3,018.0	7,213.8	0.44	0.11	-0.43
13,886.0	88.60	336.50	6,663.1	5,388.1	6,638.2	-3,058.1	7,308.7	3.20	0.53	3.16
13,980.0	90.80	336.90	6,663.6	5,388.6	6,724.5	-3,095.3	7,402.7	2.38	2.34	0.43
14,075.0	91.70	335.90	6,661.6	5,386.6	6,811.6	-3,133.3	7,497.7	1.42	0.95	-1.05
14,169.0	91.40	335.20	6,659.0	5,384.0	6,897.1	-3,172.2	7,591.6	0.81	-0.32	-0.74
14,264.0	90.90	334.60	6,657.1	5,382.1	6,983.1	-3,212.5	7,686.6	0.82	-0.53	-0.63
14,358.0	90.30	334.10	6,656.1	5,381.1	7,067.9	-3,253.2	7,780.6	0.83	-0.64	-0.53
14,452.0	89.90	334.60	6,656.0	5,381.0	7,152.6	-3,293.9	7,874.6	0.68	-0.43	0.53
14,546.0	88.00	336.00	6,657.7	5,382.7	7,238.0	-3,333.1	7,968.6	2.51	-2.02	1.49
14,641.0	88.00	336.30	6,661.0	5,386.0	7,324.8	-3,371.5	8,063.5	0.32	0.00	0.32
Final Survey=14662' MD/ 6662' TVD										
14,662.0	88.10	336.10	6,661.7	5,386.7	7,344.0	-3,380.0	8,084.5	1.06	0.48	-0.95
Projected TD=14720' MD/6664' TVD										
14,720.0	88.10	336.10	6,663.6	5,388.6	7,397.0	-3,403.5	8,142.4	0.00	0.00	0.00

Measured Depth (usft)	Vertical Depth (usft)	Local Coordinates		Comment
		+N/-S (usft)	+E/-W (usft)	
5,410.0	5,401.4	158.2	-160.5	Plan Tie In-5410' MD
5,747.0	5,725.6	110.4	-106.7	KOP=5747' MD
7,272.0	6,757.9	655.4	-248.8	LP=7272' MD/ 6758' TVD
7,367.0	6,758.7	741.1	-289.8	Deepest Point of Well=7367' MD/ 6759' TVD
14,662.0	6,661.7	7,344.0	-3,380.0	Final Survey=14662' MD/ 6662' TVD
14,720.0	6,663.6	7,397.0	-3,403.5	Projected TD=14720' MD/6664' TVD

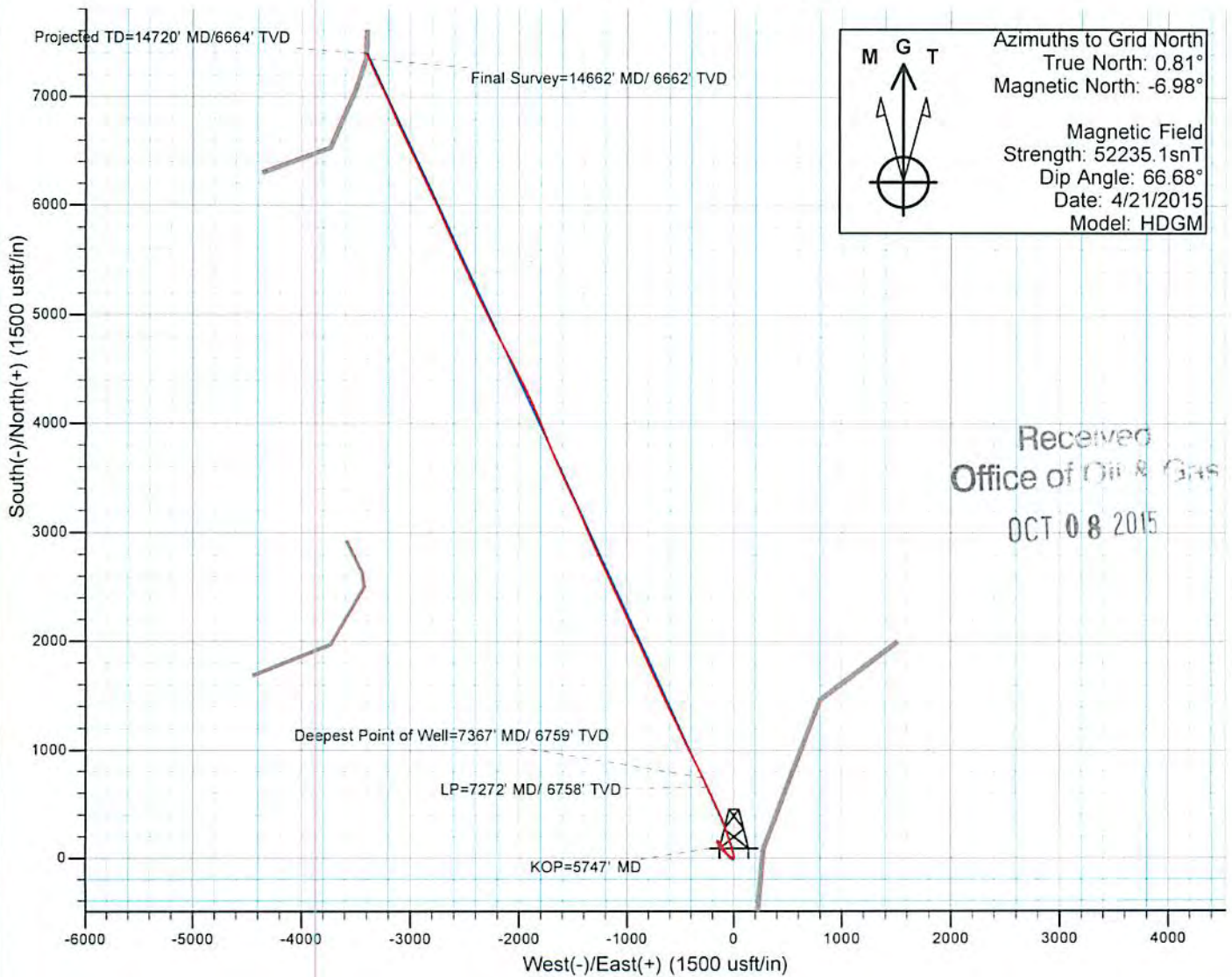
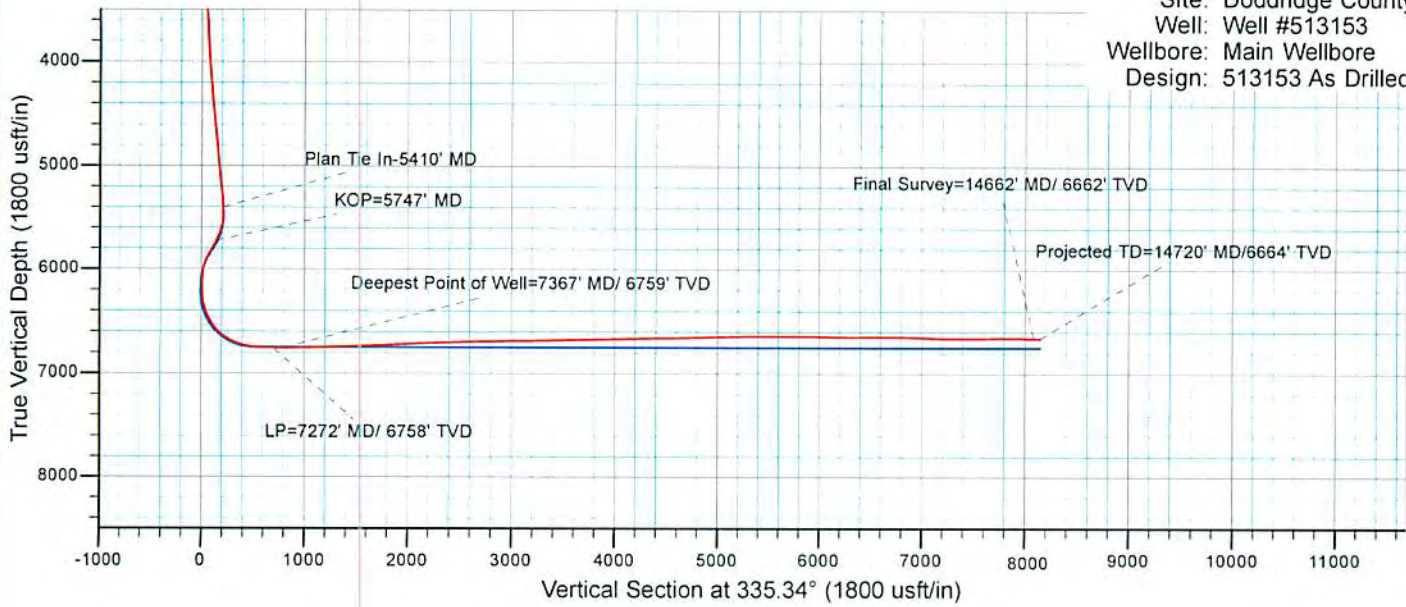
Checked By: _____ Approved By: _____ Date: _____

Received
Office of Oil & Gas
OCT 08 2015



EQT Production - Marcellus

Project: Doddridge County, WV Grid
 Site: Doddridge County 513153
 Well: Well #513153
 Wellbore: Main Wellbore
 Design: 513153 As Drilled



Received
 Office of Oil & Gas
 OCT 08 2015