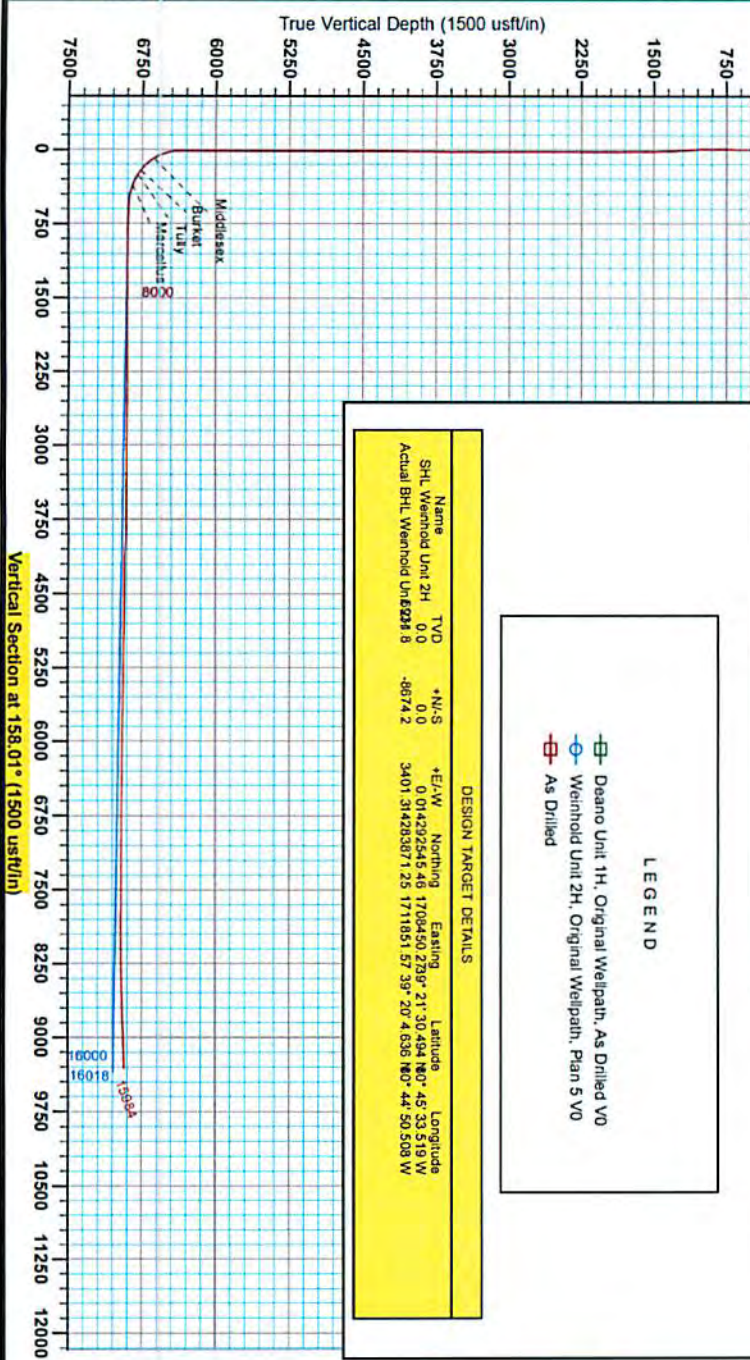




Antero
Weinhold Unit 2H
Doddridge County WV
Northing: 14292545.46
Easting: 1708450.27
As Drilled



WELL DETAILS: Weinhold Unit 2H
Ground Level: 1135.0
+N./S: 0.0
+E./W: 0.0
Northing: 14292545.46
Easting: 1708450.27
Latitude: 39° 21' 30.424" N
Longitude: 80° 45' 33.519" W
SLK

PROJECT DETAILS: Doddridge County WV
Geologic System: Universal Transverse Mercator (UTM Survey Feet)
Datum: NAD 83 (FADCON CONUS)
Eipsoid: GRS 1980
Zone: Zone 17N (6° W to 7° W)
System Datum: Mean Sea Level

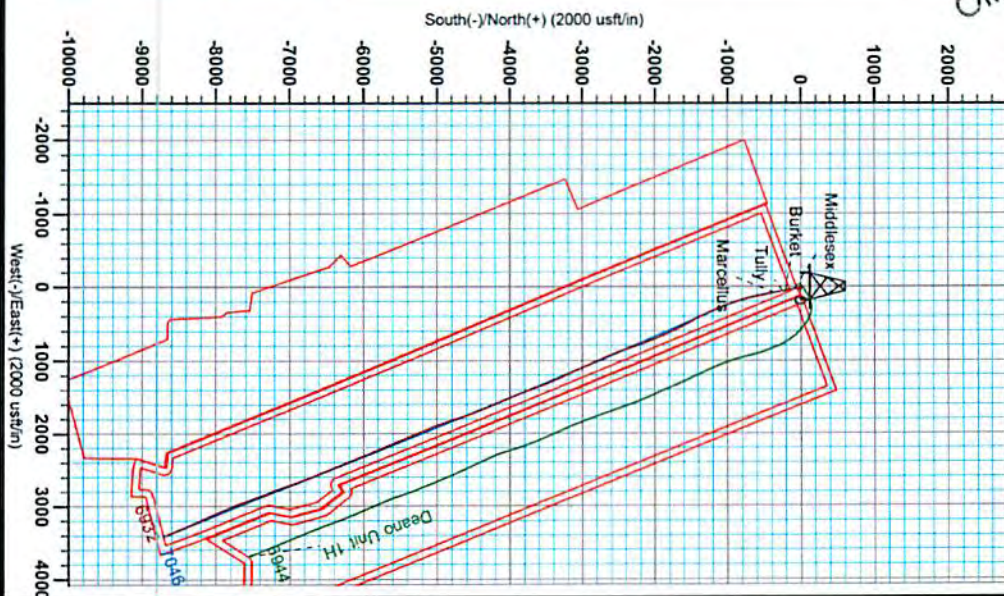
REFERENCE INFORMATION
Copyright (c) 2014 Scientific Drilling, Inc. All Rights Reserved.
Wellbore Path: Weinhold Unit 2H, Original Wellpath, As Drilled VO
Wellbore Path: Weinhold Unit 2H, Original Wellpath, Plan 5 VO
Wellbore Path: Weinhold Unit 2H, Original Wellpath, Plan 5 VO
Wellbore Path: Weinhold Unit 2H, Original Wellpath, Plan 5 VO

LEGEND

Gene Lightfoot
15:27, December 22 2014
Scientific Drilling
11220 NW 10th Street
Yukon, OK



RECEIVED
Office of Oil and Gas
OCT 15 2015
WV Department of
Environmental Protection



To convert Magnetic North to Grid, Subtract 8.6°
To convert True North to Grid, Subtract 0.1°
 Azimuths to Grid North
 True North: 0.0°
 Magnetic North: -8.6°
 Magnetic Field
 Strength: 62249.8mT
 Dip Angle: 65.85°
 Date: 10/02/2014
 Model: BDCM2014

17-06496

10/30/2015

17-06496



Antero

**Doddridge County WV
Melody Pad
Weinhold Unit 2H
Original Wellpath**

Design: As Drilled

EOW Completion Report

22 December, 2014

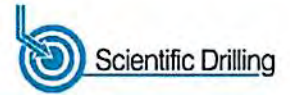


10/30/2015



17-06496

EOW Completion Report



Company:	Antero	Local Co-ordinate Reference:	Well Weinhold Unit 2H
Project:	Doddridge County WV	TVD Reference:	Precision 525: GL 1135' + KB 19' @ 1154.0usft
Site:	Melody Pad	MD Reference:	Precision 525: GL 1135' + KB 19' @ 1154.0usft
Well:	Weinhold Unit 2H	North Reference:	Grid
Wellbore:	Original Wellpath	Survey Calculation Method:	Minimum Curvature
Design:	As Drilled	Database:	Oklahoma District

Project	Doddridge County WV, McClellan District		
Map System:	Universal Transverse Mercator (US Survey Feet)	System Datum:	Mean Sea Level
Geo Datum:	NAD 1927 (NADCON CONUS)		
Map Zone:	Zone 17N (84 W to 78 W)		

Site	Melody Pad				
Site Position:		Northing:	14,292,537.54 usft	Latitude:	39° 21' 30.416 N
From:	Map	Easting:	1,708,455.40 usft	Longitude:	80° 45' 33.453 W
Position Uncertainty:	0.0 usft	Slot Radius:	13-3/16"	Grid Convergence:	0.15 °

Well	Weinhold Unit 2H, Marcellus					
Well Position	+N/-S	0.0 usft	Northing:	14,292,545.46 usft	Latitude:	39° 21' 30.494 N
	+E/-W	0.0 usft	Easting:	1,708,450.27 usft	Longitude:	80° 45' 33.519 W
Position Uncertainty		2.0 usft	Wellhead Elevation:	1,154.0 usft	Ground Level:	1,135.0 usft

Wellbore	Original Wellpath				
-----------------	-------------------	--	--	--	--

Magnetics	Model Name	Sample Date	Declination (°)	Dip Angle (°)	Field Strength (nT)
	BGGM2014	10/8/2014	-8.51	66.89	52,250

Design	As Drilled				
---------------	------------	--	--	--	--

Audit Notes:					
Version:	1.0	Phase:	ACTUAL	Tie On Depth:	0.0
Vertical Section:		Depth From (TVD) (usft)	+N/-S (usft)	+E/-W (usft)	Direction (°)
		0.0	0.0	0.0	158.01

Survey Program	Date 12/22/2014				
From (usft)	To (usft)	Survey (Wellbore)	Tool Name	Description	
106.0	6,211.0	Survey #4 Final Gyro (Original Wellpath)	Standard Keeper 104	Standard Wireline Keeper ver 1.0.7	
6,211.0	15,984.0	Survey #5 MWD survey (Original Wellpath)	MWD SDI	MWD - Standard ver 1.0.7	

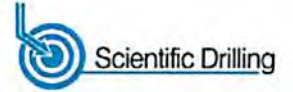
RECEIVED
 Office of Oil and Gas
 OCT 19 2015
 WV Department of Environmental Protection

MD (usft)	Inc (°)	Azi (azimuth) (°)	TVD (usft)	N/S (usft)	E/W (usft)	V. Sep (usft)	Leg (°/100usft)
0.0	0.00	0.00	0.0	0.0	0.0	0.0	0.00
106.0	0.46	223.85	106.0	-0.3	-0.3	0.2	0.43
131.0	0.41	240.46	131.0	-0.4	-0.4	0.2	0.54
156.0	0.24	222.29	156.0	-0.5	-0.6	0.3	0.79
181.0	0.18	231.42	181.0	-0.6	-0.6	0.3	0.27
206.0	0.13	240.27	206.0	-0.6	-0.7	0.3	0.22
231.0	0.14	192.53	231.0	-0.7	-0.7	0.3	0.44
256.0	0.15	219.84	256.0	-0.7	-0.7	0.4	0.28
281.0	0.15	210.84	281.0	-0.8	-0.8	0.4	0.09
306.0	0.12	217.95	306.0	-0.8	-0.8	0.4	0.14
331.0	0.07	279.80	331.0	-0.8	-0.8	0.5	0.43



17-06496

EOW Completion Report



Company:	Antero	Local Co-ordinate Reference:	Well Weinhold Unit 2H
Project:	Doddridge County WV	TVD Reference:	Precision 525: GL 1135' + KB 19' @ 1154.0usft
Site:	Melody Pad	MD Reference:	Precision 525: GL 1135' + KB 19' @ 1154.0usft
Well:	Weinhold Unit 2H	North Reference:	Grid
Wellbore:	Original Wellpath	Survey Calculation Method:	Minimum Curvature
Design:	As Drilled	Database:	Oklahoma District

Survey								
MD (usft)	Inc (°)	Azi (azimuth) (°)	TVD (usft)	N/S (usft)	E/W (usft)	V. Sec (usft)	DLeg (°/100usft)	
356.0	0.03	301.47	356.0	-0.8	-0.9	0.4	0.17	
381.0	0.02	24.57	381.0	-0.8	-0.9	0.4	0.14	
406.0	0.12	315.68	406.0	-0.8	-0.9	0.4	0.46	
431.0	0.06	250.71	431.0	-0.8	-0.9	0.4	0.44	
456.0	0.15	289.57	456.0	-0.8	-1.0	0.4	0.44	
481.0	0.18	285.29	481.0	-0.7	-1.0	0.3	0.13	
506.0	0.08	259.90	506.0	-0.7	-1.1	0.3	0.45	
531.0	0.10	265.06	531.0	-0.7	-1.1	0.3	0.09	
556.0	0.09	304.58	556.0	-0.7	-1.2	0.3	0.26	
581.0	0.49	51.05	581.0	-0.7	-1.1	0.2	2.09	
606.0	1.08	50.25	606.0	-0.4	-0.8	0.1	2.36	
631.0	1.45	51.25	631.0	-0.1	-0.4	-0.1	1.48	
656.0	1.75	48.72	656.0	0.4	0.1	-0.3	1.23	
681.0	2.43	45.95	681.0	1.0	0.8	-0.6	2.75	
706.0	2.98	45.55	705.9	1.8	1.7	-1.1	2.20	
731.0	3.54	45.52	730.9	2.8	2.7	-1.6	2.24	
756.0	3.68	45.13	755.8	3.9	3.8	-2.2	0.57	
781.0	3.74	46.46	780.8	5.0	4.9	-2.8	0.42	
806.0	3.80	45.42	805.7	6.2	6.1	-3.4	0.36	
831.0	3.78	45.62	830.7	7.3	7.3	-4.1	0.10	
856.0	3.80	52.57	855.6	8.4	8.6	-4.6	1.84	
881.0	3.99	57.86	880.6	9.4	9.9	-5.0	1.63	
906.0	4.25	69.42	905.5	10.2	11.6	-5.8	3.44	
931.0	4.38	70.67	930.4	10.8	13.3	-4.7	0.64	
956.0	4.68	84.89	955.4	11.2	15.2	-4.0	1.64	
981.0	4.88	90.18	980.3	11.3	17.3	-3.0	1.94	
1,006.0	5.22	100.50	1,005.2	11.1	19.5	-1.6	3.87	
1,031.0	5.54	105.80	1,030.1	10.6	21.8	3.6	3.38	
1,056.0	5.72	111.88	1,054.9	9.8	24.1	5.4	0.95	
1,081.0	5.88	113.68	1,079.8	8.8	26.4	7.2	0.65	
1,106.0	5.79	114.80	1,104.7	7.7	28.7	8.9	1.93	
1,131.0	5.64	115.45	1,129.6	6.7	31.0	11.9	1.71	
1,156.0	5.54	115.82	1,154.4	5.6	33.2	13.2	1.16	
1,181.0	5.06	115.77	1,179.3	4.6	35.3	14.3	2.15	
1,206.0	4.64	114.85	1,204.2	3.7	37.2	15.3	1.22	
1,231.0	4.16	115.05	1,229.2	2.9	38.9	16.3	0.71	
1,256.0	3.87	115.42	1,254.1	2.2	40.5	17.1	1.27	
1,281.0	3.34	114.11	1,279.1	1.5	41.9	18.0	0.56	
1,306.0	3.05	115.76	1,304.0	0.9	43.2	18.8	1.14	
1,331.0	2.88	114.74	1,329.0	0.4	44.4	19.5	0.71	
1,356.0	2.58	116.95	1,354.0	-0.1	45.4			
1,381.0	2.45	118.08	1,378.9	-0.7	46.4			
1,406.0	2.17	119.43	1,403.9	-1.1	47.3			
1,431.0	2.03	122.37	1,428.9	-1.6	48.1			

RECEIVED
Office of Oil and Gas
OCT 19 2015
RECEIVED
WV Department of
Environmental Protection
OCT 19 2015
WV Department of
Environmental Protection

17-06496



EOW Completion Report



Company: Antero	Local Co-ordinate Reference: Well Weinhold Unit 2H
Project: Doddridge County WV	TV D Reference: Precision 525: GL 1135' + KB 19' @ 1154.0usft
Site: Melody Pad	MD Reference: Precision 525: GL 1135' + KB 19' @ 1154.0usft
Well: Weinhold Unit 2H	North Reference: Grid
Wellbore: Original Wellpath	Survey Calculation Method: Minimum Curvature
Design: As Drilled	Database: Oklahoma District

Survey

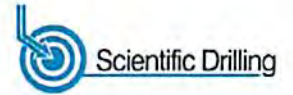
MD (usft)	Inc (°)	Azi (azimuth) (°)	TV D (usft)	N/S (usft)	E/W (usft)	V. Sec (usft)	DLeg (°/100usft)
1,456.0	1.87	122.61	1,453.9	-2.1	48.8	20.2	0.64
1,481.0	1.57	124.16	1,478.9	-2.5	49.4	20.8	1.21
1,506.0	1.58	125.06	1,503.9	-2.9	50.0	21.4	0.11
1,531.0	1.27	123.04	1,528.9	-3.2	50.5	21.9	1.26
1,556.0	1.15	122.80	1,553.9	-3.5	50.9	22.3	0.48
1,581.0	1.06	121.43	1,578.8	-3.8	51.4	22.7	0.38
1,606.0	0.97	122.93	1,603.8	-4.0	51.7	23.1	0.38
1,631.0	0.92	121.68	1,628.8	-4.2	52.1	23.4	0.22
1,656.0	0.88	120.37	1,653.8	-4.4	52.4	23.7	0.18
1,681.0	0.76	118.00	1,678.8	-4.6	52.7	24.0	0.50
1,706.0	0.86	114.69	1,703.8	-4.7	53.0	24.3	0.44
1,731.0	0.71	110.16	1,728.8	-4.9	53.4	24.5	0.65
1,756.0	0.44	92.27	1,753.8	-4.9	53.6	24.6	1.28
1,781.0	0.43	100.80	1,778.8	-5.0	53.8	24.7	0.26
1,806.0	0.29	74.77	1,803.8	-5.0	53.9	24.8	0.85
1,831.0	0.32	89.00	1,828.8	-4.9	54.1	24.8	0.32
1,856.0	0.27	85.24	1,853.8	-4.9	54.2	24.9	0.21
1,881.0	0.15	64.32	1,878.8	-4.9	54.3	24.9	0.56
1,906.0	0.16	33.46	1,903.8	-4.9	54.3	24.9	0.33
1,931.0	0.14	54.35	1,928.8	-4.8	54.4	24.8	0.23
1,956.0	0.09	39.54	1,953.8	-4.8	54.4	24.8	0.23
1,981.0	0.06	15.08	1,978.8	-4.8	54.4	24.8	0.17
2,006.0	0.05	348.04	2,003.8	-4.7	54.4	24.8	0.17
2,031.0	0.04	292.08	2,028.8	-4.7	54.4	24.8	0.17
2,056.0	0.05	120.56	2,053.8	-4.7	54.4	24.8	0.36
2,081.0	0.06	103.53	2,078.8	-4.7	54.4	24.8	0.08
2,106.0	0.10	106.62	2,103.8	-4.7	54.5	24.8	0.16
2,131.0	0.11	95.59	2,128.8	-4.8	54.5	24.8	0.09
2,156.0	0.06	39.52	2,153.8	-4.8	54.6	24.8	0.37
2,181.0	0.05	358.91	2,178.8	-4.7	54.6	24.8	0.16
2,206.0	0.04	106.60	2,203.8	-4.7	54.6	24.8	0.29
2,231.0	0.12	24.76	2,228.8	-4.7	54.6	24.8	0.48
2,256.0	0.03	163.67	2,253.8	-4.7	54.6	24.8	0.58
2,281.0	0.15	306.20	2,278.8	-4.7	54.6	24.8	0.70
2,306.0	0.09	283.77	2,303.8	-4.6	54.5	24.7	0.30
2,331.0	0.10	226.63	2,328.8	-4.7	54.5	24.7	0.37
2,356.0	0.08	211.64	2,353.8	-4.7	54.5	24.7	0.12
2,381.0	0.05	240.81	2,378.8	-4.7	54.5	24.8	0.18
2,406.0	0.06	356.86	2,403.8	-4.7	54.4	24.7	0.37
2,431.0	0.08	311.36	2,428.8	-4.7	54.4	24.7	0.23
2,456.0	0.13	288.58	2,453.8	-4.7	54.4	24.7	0.26
2,481.0	0.05	93.28	2,478.8	-4.6	54.4	24.7	0.71
2,506.0	0.22	266.38	2,503.8	-4.6	54.3	24.7	1.08
2,531.0	0.12	312.10	2,528.8	-4.6	54.3	24.6	0.64
2,556.0	0.17	280.90	2,553.8	-4.6	54.2	24.6	0.37

RECEIVED
 Office of Oil and Gas
 OCT 19 2015
 WV Department of
 Environmental Protection



17-06496

EOW Completion Report



Company:	Antero	Local Co-ordinate Reference:	Well Weinhold Unit 2H
Project:	Doddridge County WV	TVD Reference:	Precision 525: GL 1135' + KB 19' @ 1154.0usft
Site:	Melody Pad	MD Reference:	Precision 525: GL 1135' + KB 19' @ 1154.0usft
Well:	Weinhold Unit 2H	North Reference:	Grid
Wellbore:	Original Wellpath	Survey Calculation Method:	Minimum Curvature
Design:	As Drilled	Database:	Oklahoma District

Survey								
MD (usft)	Inc (°)	Azi (azimuth) (°)	TVD (usft)	N/S (usft)	E/W (usft)	V. Sec (usft)	DLeg (°/100usft)	
2,581.0	0.14	244.18	2,578.8	-4.6	54.2	24.6	0.41	
2,606.0	0.20	272.48	2,603.8	-4.6	54.1	24.5	0.41	
2,631.0	0.23	285.80	2,628.8	-4.6	54.0	24.5	0.23	
2,656.0	0.22	280.61	2,653.8	-4.6	53.9	24.4	0.09	
2,681.0	0.23	269.62	2,678.8	-4.6	53.8	24.4	0.18	
2,706.0	0.21	274.04	2,703.8	-4.6	53.7	24.4	0.10	
2,731.0	0.25	275.17	2,728.8	-4.6	53.6	24.3	0.16	
2,756.0	0.30	260.88	2,753.8	-4.6	53.5	24.3	0.34	
2,781.0	0.24	257.53	2,778.8	-4.6	53.4	24.2	0.25	
2,806.0	0.30	277.84	2,803.8	-4.6	53.3	24.2	0.45	
2,831.0	0.37	289.59	2,828.8	-4.6	53.1	24.1	0.39	
2,856.0	0.33	267.14	2,853.8	-4.5	53.0	24.0	0.57	
2,881.0	0.33	243.20	2,878.8	-4.6	52.8	24.0	0.55	
2,906.0	0.37	266.56	2,903.8	-4.6	52.7	24.0	0.59	
2,931.0	0.40	263.81	2,928.8	-4.6	52.5	24.0	0.14	
2,956.0	0.43	277.58	2,953.8	-4.6	52.3	23.9	0.42	
2,981.0	0.53	285.22	2,978.8	-4.6	52.1	23.8	0.47	
3,006.0	0.48	272.91	3,003.8	-4.5	51.9	23.7	0.48	
3,031.0	0.45	259.79	3,028.8	-4.6	51.7	23.6	0.44	
3,056.0	0.46	264.10	3,053.8	-4.6	51.5	23.5	0.14	
3,081.0	0.47	274.19	3,078.8	-4.6	51.3	23.5	0.33	
3,106.0	0.49	266.52	3,103.8	-4.6	51.1	23.4	0.27	
3,131.0	0.53	279.53	3,128.8	-4.6	50.9	23.3	0.49	
3,156.0	0.48	267.28	3,153.8	-4.6	50.7	23.3	0.47	
3,181.0	0.48	264.03	3,178.8	-4.6	50.5	23.1	0.11	
3,206.0	0.53	271.33	3,203.8	-4.6	50.2	23.0	0.33	
3,231.0	0.53	278.47	3,228.8	-4.6	50.0	23.0	0.26	
3,256.0	0.54	269.88	3,253.8	-4.5	49.8	22.9	0.32	
3,281.0	0.50	268.41	3,278.8	-4.6	49.5	22.8	0.17	
3,306.0	0.55	283.95	3,303.8	-4.5	49.3	22.7	0.60	
3,331.0	0.58	276.26	3,328.8	-4.5	49.1	22.5	0.33	
3,356.0	0.57	279.83	3,353.8	-4.4	48.8	22.4	0.15	
3,381.0	0.52	270.45	3,378.8	-4.4	48.6	22.3	0.41	
3,406.0	0.56	274.21	3,403.8	-4.4	48.4	22.2	0.21	
3,431.0	0.57	279.09	3,428.8	-4.4	48.1	22.1	0.20	
3,456.0	0.55	275.47	3,453.8	-4.4	47.9	22.0	0.16	
3,481.0	0.55	274.25	3,478.8	-4.3	47.6	21.9	0.05	
3,506.0	0.57	271.30	3,503.8	-4.3	47.4	21.8	0.14	
3,531.0	0.60	276.70	3,528.8	-4.3	47.1	21.6	0.25	
3,556.0	0.57	281.92	3,553.8	-4.3	46.9	21.5	0.24	
3,581.0	0.61	271.54	3,578.8	-4.2	46.6	21.4	0.46	
3,606.0	0.57	275.75	3,603.8	-4.2	46.4	21.3	0.24	
3,631.0	0.57	275.65	3,628.8	-4.2	46.1	21.2	0.00	
3,656.0	0.56	270.45	3,653.8	-4.2	45.9	21.1	0.21	

RECEIVED
 Office of Oil and Gas
 OCT 19 2015
 WV Department of
 Environmental Protection

17-06496



EOW Completion Report



Company: Antero	Local Co-ordinate Reference: Well Weinhold Unit 2H
Project: Doddridge County WV	TVD Reference: Precision 525: GL 1135' + KB 19' @ 1154.0usft
Site: Melody Pad	MD Reference: Precision 525: GL 1135' + KB 19' @ 1154.0usft
Well: Weinhold Unit 2H	North Reference: Grid
Wellbore: Original Wellpath	Survey Calculation Method: Minimum Curvature
Design: As Drilled	Database: Oklahoma District

Survey								
MD (usft)	Inc (°)	Azi (azimuth) (°)	TVD (usft)	N/S (usft)	E/W (usft)	V. Sec (usft)	DLeg (°/100usft)	
3,681.0	0.65	281.74	3,678.8	-4.2	45.6	20.9	0.60	
3,706.0	0.65	271.28	3,703.8	-4.1	45.3	20.8	0.47	
3,731.0	0.58	273.33	3,728.8	-4.1	45.1	20.7	0.29	
3,756.0	0.62	273.98	3,753.8	-4.1	44.8	20.6	0.16	
3,781.0	0.65	277.73	3,778.8	-4.1	44.5	20.4	0.20	
3,806.0	0.60	272.66	3,803.8	-4.0	44.3	20.3	0.30	
3,831.0	0.57	266.34	3,828.8	-4.0	44.0	20.2	0.28	
3,856.0	0.58	271.80	3,853.8	-4.0	43.8	20.1	0.22	
3,881.0	0.63	280.10	3,878.8	-4.0	43.5	20.0	0.40	
3,906.0	0.62	269.11	3,903.8	-4.0	43.2	19.9	0.48	
3,931.0	0.61	267.83	3,928.8	-4.0	43.0	19.8	0.07	
3,956.0	0.64	273.87	3,953.8	-4.0	42.7	19.7	0.29	
3,981.0	0.58	269.48	3,978.8	-4.0	42.4	19.6	0.30	
4,006.0	0.61	269.81	4,003.8	-4.0	42.2	19.5	0.12	
4,031.0	0.67	277.17	4,028.8	-4.0	41.9	19.4	0.41	
4,056.0	0.64	273.26	4,053.8	-3.9	41.6	19.2	0.22	
4,081.0	0.66	280.28	4,078.8	-3.9	41.3	19.1	0.33	
4,106.0	0.67	273.07	4,103.8	-3.9	41.0	19.0	0.34	
4,131.0	0.66	269.63	4,128.8	-3.9	40.7	18.8	0.16	
4,156.0	0.68	276.94	4,153.8	-3.9	40.4	18.7	0.35	
4,181.0	0.66	275.08	4,178.8	-3.8	40.2	18.6	0.12	
4,206.0	0.66	277.02	4,203.8	-3.8	39.9	18.4	0.09	
4,231.0	0.70	275.90	4,228.8	-3.8	39.6	18.3	0.17	
4,256.0	0.66	277.97	4,253.8	-3.7	39.3	18.0	0.19	
4,281.0	0.61	274.95	4,278.8	-3.7	39.0	17.9	0.24	
4,306.0	0.64	276.09	4,303.7	-3.7	38.7	17.8	0.13	
4,331.0	0.63	283.22	4,328.7	-3.6	38.5	17.8	0.37	
4,356.0	0.65	273.42	4,353.7	-3.6	38.2	17.6	0.44	
4,381.0	0.67	261.40	4,378.7	-3.6	37.9	17.5	0.56	
4,406.0	0.59	279.67	4,403.7	-3.6	37.6	17.3	0.86	
4,431.0	0.59	272.91	4,428.7	-3.6	37.4	17.3	0.28	
4,456.0	0.54	272.86	4,453.7	-3.6	37.1	17.2	0.20	
4,481.0	0.51	279.07	4,478.7	-3.5	36.9	17.1	0.26	
4,506.0	0.47	275.25	4,503.7	-3.5	36.7	17.0	0.21	
4,531.0	0.50	269.50	4,528.7	-3.5	36.5	16.9	0.23	
4,556.0	0.46	265.30	4,553.7	-3.5	36.3	16.8	0.21	
4,581.0	0.45	278.88	4,578.7	-3.5	36.1	16.7	0.43	
4,606.0	0.42	262.22	4,603.7	-3.5	35.9	16.7	0.52	
4,631.0	0.45	271.50	4,628.7	-3.5	35.7	16.6	0.31	
4,656.0	0.38	281.24	4,653.7	-3.5	35.5	16.5	0.40	
4,681.0	0.47	268.70	4,678.7	-3.5	35.3	16.4	0.52	
4,706.0	0.44	270.49	4,703.7	-3.5	35.1	16.4	0.13	
4,731.0	0.48	273.64	4,728.7	-3.5	34.9	16.3	0.19	
4,756.0	0.51	260.47	4,753.7	-3.5	34.7	16.2	0.47	

RECEIVED
Office of Oil and Gas
OCT 19 2015
WV Department of
Environmental Protection

17-06496



EOW Completion Report



Company: Antero	Local Co-ordinate Reference: Well Weinhold Unit 2H
Project: Doddridge County WV	TVD Reference: Precision 525: GL 1135' + KB 19' @ 1154.0usft
Site: Melody Pad	MD Reference: Precision 525: GL 1135' + KB 19' @ 1154.0usft
Well: Weinhold Unit 2H	North Reference: Grid
Wellbore: Original Wellpath	Survey Calculation Method: Minimum Curvature
Design: As Drilled	Database: Oklahoma District

MD (usft)	Inc (°)	Azi (azimuth) (°)	TVD (usft)	N/S (usft)	E/W (usft)	V. Sec (usft)	DLeg (°/100usft)
4,781.0	0.44	258.32	4,778.7	-3.5	34.5	16.2	0.29
4,806.0	0.50	262.38	4,803.7	-3.6	34.3	16.1	0.27
4,831.0	0.45	267.07	4,828.7	-3.6	34.1	16.1	0.25
4,856.0	0.46	263.65	4,853.7	-3.6	33.9	16.0	0.12
4,881.0	0.44	256.01	4,878.7	-3.6	33.7	16.0	0.25
4,906.0	0.41	258.97	4,903.7	-3.7	33.5	16.0	0.15
4,931.0	0.42	257.89	4,928.7	-3.7	33.4	15.9	0.05
4,956.0	0.49	251.89	4,953.7	-3.7	33.2	15.9	0.34
4,981.0	0.40	250.94	4,978.7	-3.8	33.0	15.9	0.36
5,006.0	0.45	242.55	5,003.7	-3.9	32.8	15.9	0.32
5,031.0	0.45	247.43	5,028.7	-4.0	32.6	15.9	0.15
5,056.0	0.50	241.74	5,053.7	-4.1	32.4	15.9	0.27
5,081.0	0.44	241.24	5,078.7	-4.2	32.3	15.9	0.24
5,106.0	0.42	255.45	5,103.7	-4.2	32.1	15.9	0.43
5,131.0	0.44	256.11	5,128.7	-4.3	31.9	15.9	0.08
5,156.0	0.41	253.38	5,153.7	-4.3	31.7	15.9	0.14
5,181.0	0.36	263.49	5,178.7	-4.4	31.6	15.9	0.34
5,206.0	0.44	258.80	5,203.7	-4.4	31.4	15.8	0.35
5,231.0	0.44	254.67	5,228.7	-4.4	31.2	15.8	0.13
5,256.0	0.46	261.81	5,253.7	-4.5	31.0	15.8	0.24
5,281.0	0.43	261.50	5,278.7	-4.5	30.8	15.7	0.12
5,306.0	0.45	254.83	5,303.7	-4.5	30.6	15.7	0.22
5,331.0	0.49	256.81	5,328.7	-4.6	30.4	15.6	0.17
5,356.0	0.40	263.17	5,353.7	-4.6	30.2	15.6	0.41
5,381.0	0.46	261.24	5,378.7	-4.6	30.1	15.6	0.25
5,406.0	0.45	261.19	5,403.7	-4.7	29.9	15.5	0.04
5,431.0	0.45	258.02	5,428.7	-4.7	29.7	15.5	0.10
5,456.0	0.48	260.57	5,453.7	-4.7	29.5	15.4	0.15
5,481.0	0.45	269.49	5,478.7	-4.8	29.3	15.3	0.15
5,506.0	0.55	258.06	5,503.7	-4.8	29.1	15.3	0.56
5,531.0	0.48	263.02	5,528.7	-4.8	28.8	15.3	0.33
5,556.0	0.41	262.69	5,553.7	-4.9	28.6	15.2	0.28
5,581.0	0.42	252.09	5,578.7	-4.9	28.5	15.2	0.31
5,606.0	0.48	253.28	5,603.7	-4.9	28.3	15.2	0.24
5,631.0	0.47	256.15	5,628.7	-5.0	28.1	15.2	0.10
5,656.0	0.45	260.84	5,653.7	-5.0	27.9	15.1	0.17
5,681.0	0.44	268.26	5,678.7	-5.1	27.7	15.1	0.23
5,706.0	0.45	261.33	5,703.7	-5.1	27.5	15.0	0.22
5,731.0	0.42	262.34	5,728.7	-5.1	27.3	15.0	0.12
5,756.0	0.43	263.75	5,753.7	-5.1	27.1	14.9	0.06
5,781.0	0.44	257.72	5,778.7	-5.2	26.9	14.9	0.19
5,806.0	0.40	261.04	5,803.7	-5.2	26.8	14.8	0.19
5,831.0	0.41	257.71	5,828.7	-5.2	26.6	14.8	0.10
5,856.0	0.47	253.90	5,853.7	-5.3	26.4	14.8	0.27

RECEIVED
Office of Oil and Gas
OCT 19 2015
WV Department of
Environmental Protection

17-06496



EOW Completion Report



Company:	Antero	Local Co-ordinate Reference:	Well Weinhold Unit 2H
Project:	Doddridge County WV	TVD Reference:	Precision 525: GL 1135' + KB 19' @ 1154.0usft
Site:	Melody Pad	MD Reference:	Precision 525: GL 1135' + KB 19' @ 1154.0usft
Well:	Weinhold Unit 2H	North Reference:	Grid
Wellbore:	Original Wellpath	Survey Calculation Method:	Minimum Curvature
Design:	As Drilled	Database:	Oklahoma District

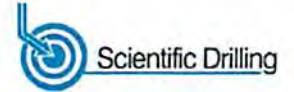
Survey								
MD (usft)	Inc (°)	Azi (azimuth) (°)	TVD (usft)	N/S (usft)	E/W (usft)	V. Sec (usft)	DLeg (°/100usft)	
5,881.0	0.27	264.42	5,878.7	-5.3	26.2	14.7	0.84	
5,906.0	0.36	253.81	5,903.7	-5.3	26.1	14.7	0.43	
5,931.0	0.32	241.10	5,928.7	-5.4	26.0	14.7	0.34	
5,956.0	0.33	253.19	5,953.7	-5.4	25.8	14.7	0.28	
5,981.0	0.46	259.59	5,978.7	-5.5	25.7	14.7	0.55	
6,006.0	0.28	252.48	6,003.7	-5.5	25.5	14.7	0.74	
6,031.0	0.35	244.48	6,028.7	-5.6	25.4	14.7	0.33	
6,056.0	0.37	256.70	6,053.7	-5.6	25.2	14.7	0.32	
6,081.0	0.50	255.84	6,078.7	-5.7	25.1	14.6	0.52	
6,106.0	0.35	271.44	6,103.7	-5.7	24.9	14.6	0.75	
6,131.0	0.33	220.65	6,128.7	-5.7	24.8	14.6	1.17	
6,156.0	0.32	247.43	6,153.7	-5.8	24.6	14.6	0.60	
6,181.0	0.48	261.35	6,178.7	-5.9	24.5	14.6	0.74	
6,206.0	0.52	266.28	6,203.7	-5.9	24.3	14.5	0.23	
6,211.0	0.52	267.16	6,208.7	-5.9	24.2	14.5	0.16	
6,279.0	0.61	266.94	6,276.7	-5.9	23.5	14.3	0.13	
6,324.0	0.55	288.00	6,321.7	-5.9	23.1	14.1	0.49	
6,369.0	0.57	230.11	6,366.7	-6.0	22.7	14.0	1.21	
6,414.0	5.04	169.43	6,411.6	-8.0	22.9	16.0	10.64	
6,458.0	10.41	167.75	6,455.2	-13.8	24.1	21.9	12.21	
6,503.0	15.49	167.73	6,499.0	-23.7	26.2	31.8	11.29	
6,548.0	20.68	169.02	6,541.8	-37.4	29.0	41.8	11.57	
6,593.0	25.76	171.05	6,583.2	-54.8	32.1	52.9	11.43	
6,638.0	30.56	171.97	6,622.8	-75.8	35.2	63.9	10.71	
6,652.0	32.36	171.58	6,634.8	-83.1	36.2	74.9	12.96	
Middlesex								
6,682.0	36.23	170.85	6,659.5	-99.8	38.8	107.1	12.96	
6,727.0	42.16	170.34	6,694.4	-127.8	43.5	139.0	11.31	
6,772.0	47.20	169.34	6,726.4	-158.9	49.1	165.8	9.51	
6,817.0	51.48	169.44	6,755.7	-192.5	55.4	199.2	7.87	
6,837.0	53.05	169.52	6,767.9	-208.0	58.2	214.7	7.87	
Burket								
6,862.0	55.02	169.61	6,782.6	-227.9	61.9	234.5	7.87	
6,888.0	57.88	169.04	6,797.0	-249.2	65.9	255.8	11.17	
Tully								
6,907.0	59.98	168.64	6,806.8	-265.2	69.1	271.8	11.17	
6,952.0	65.45	168.24	6,827.4	-304.4	77.1	311.1	12.18	
6,997.0	70.05	168.49	6,844.4	-345.1	85.5	352.0	10.24	
7,011.0	71.07	168.33	6,849.1	-358.1	88.1	365.0	7.40	
Marcellus								
7,041.0	73.27	167.99	6,858.3	-386.0	94.0	393.1	7.40	
7,086.0	75.94	167.74	6,870.2	-428.4	103.1	435.9	5.96	
7,131.0	80.39	168.98	6,879.5	-471.6	112.0	479.2	10.25	
7,176.0	83.07	169.66	6,885.9	-515.3	120.3	522.9	6.14	
7,201.0	85.47	169.67	6,888.4	-539.8	124.7	547.2	9.60	

RECEIVED
Office of Oil and Gas
OCT 19 2015
WV Department of Environmental Protection



17-06496

EOW Completion Report



Company: Antero	Local Co-ordinate Reference: Well Weinhold Unit 2H
Project: Doddridge County WV	TVD Reference: Precision 525: GL 1135' + KB 19' @ 1154.0usft
Site: Melody Pad	MD Reference: Precision 525: GL 1135' + KB 19' @ 1154.0usft
Well: Weinhold Unit 2H	North Reference: Grid
Wellbore: Original Wellpath	Survey Calculation Method: Minimum Curvature
Design: As Drilled	Database: Oklahoma District

Survey

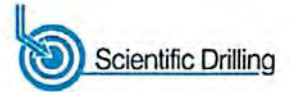
MD (usft)	Inc (°)	Azi (azimuth) (°)	TVD (usft)	N/S (usft)	E/W (usft)	V. Sec (usft)	DLeg (°/100usft)
7,246.0	87.85	169.32	6,891.0	-584.0	132.9	591.2	5.35
7,336.0	85.74	166.77	6,896.1	-671.9	151.5	679.7	3.67
7,426.0	87.93	165.19	6,901.0	-759.0	173.3	768.7	3.00
7,515.0	92.33	165.63	6,900.8	-845.1	195.7	856.9	4.97
7,605.0	88.20	160.27	6,900.4	-931.1	222.1	946.5	7.52
7,695.0	90.31	160.62	6,901.6	-1,015.9	252.2	1,036.5	2.38
7,784.0	89.43	157.19	6,901.8	-1,099.0	284.2	1,125.4	3.98
7,874.0	90.92	156.49	6,901.5	-1,181.7	319.6	1,215.4	1.83
7,964.0	89.16	154.64	6,901.5	-1,263.6	356.8	1,305.3	2.84
8,054.0	90.75	155.70	6,901.5	-1,345.3	394.6	1,395.2	2.12
8,143.0	88.81	150.51	6,901.9	-1,424.6	434.9	1,483.8	6.23
8,233.0	90.40	151.48	6,902.5	-1,503.4	478.5	1,573.2	2.07
8,323.0	89.96	151.39	6,902.2	-1,582.4	521.5	1,662.6	0.50
8,412.0	89.16	152.80	6,902.9	-1,661.0	563.2	1,751.1	1.82
8,502.0	89.43	154.82	6,904.0	-1,741.8	602.9	1,840.8	2.26
8,592.0	92.86	155.70	6,902.2	-1,823.5	640.6	1,930.7	3.93
8,681.0	90.66	159.12	6,899.5	-1,905.6	674.7	2,019.6	4.57
8,771.0	88.72	156.93	6,900.0	-1,989.1	708.4	2,109.6	3.25
8,861.0	90.48	158.77	6,900.6	-2,072.4	742.3	2,199.6	2.83
8,950.0	90.66	160.35	6,899.7	-2,155.8	773.4	2,288.6	1.79
9,039.0	90.75	162.38	6,898.6	-2,240.1	801.8	2,377.4	2.28
9,129.0	90.31	162.81	6,897.8	-2,326.0	828.8	2,466.1	0.68
9,218.0	88.90	160.62	6,898.4	-2,410.5	856.7	2,554.9	2.93
9,308.0	88.29	161.85	6,900.6	-2,495.7	885.6	2,645.8	1.53
9,397.0	88.64	158.24	6,903.0	-2,579.3	916.0	2,734.6	4.07
9,487.0	89.43	155.78	6,904.5	-2,662.1	951.1	2,824.6	2.87
9,577.0	90.40	155.26	6,904.6	-2,744.0	988.4	2,914.5	1.22
9,671.0	91.01	157.72	6,903.5	-2,830.2	1,025.9	3,008.3	2.70
9,764.0	88.81	155.26	6,903.6	-2,915.5	1,063.0	3,101.4	3.55
9,859.0	89.78	157.98	6,904.8	-3,002.7	1,100.7	3,196.4	3.04
9,954.0	89.34	155.08	6,905.5	-3,089.8	1,138.5	3,291.3	3.09
10,048.0	88.37	152.97	6,907.4	-3,174.3	1,179.7	3,385.1	2.47
10,143.0	89.60	155.34	6,909.1	-3,259.8	1,221.1	3,479.9	2.81
10,237.0	89.16	157.19	6,910.1	-3,345.8	1,258.9	3,573.8	2.02
10,331.0	88.72	156.40	6,911.8	-3,432.2	1,296.0	3,667.8	0.96
10,425.0	90.48	160.97	6,912.5	-3,519.7	1,330.1	3,761.7	5.21
10,520.0	88.46	160.44	6,913.4	-3,609.4	1,361.5	3,856.6	2.20
10,614.0	87.76	161.32	6,916.5	-3,698.2	1,392.3	3,950.4	1.20
10,708.0	87.32	158.68	6,920.5	-3,786.4	1,424.4	4,044.3	2.84
10,798.0	88.99	158.07	6,923.4	-3,870.0	1,457.5	4,134.2	1.98
10,887.0	88.72	155.96	6,925.2	-3,951.9	1,492.3	4,223.2	2.39
10,977.0	89.34	157.37	6,926.7	-4,034.6	1,527.9	4,313.2	1.71
11,067.0	90.48	157.10	6,926.8	-4,117.5	1,562.8	4,403.1	1.30
11,157.0	90.57	157.19	6,926.0	-4,200.5	1,597.7	4,493.1	0.14

RECEIVED
Office of Oil and Gas
07/19/2015
WV Department of
Environmental Protection



17-06496

EOW Completion Report



Company: Antero	Local Co-ordinate Reference: Well Weinhold Unit 2H
Project: Doddridge County WV	TVD Reference: Precision 525: GL 1135' + KB 19' @ 1154.0usft
Site: Melody Pad	MD Reference: Precision 525: GL 1135' + KB 19' @ 1154.0usft
Well: Weinhold Unit 2H	North Reference: Grid
Wellbore: Original Wellpath	Survey Calculation Method: Minimum Curvature
Design: As Drilled	Database: Oklahoma District

Survey

MD (usft)	Inc (°)	Azi (azimuth) (°)	TVD (usft)	N/S (usft)	E/W (usft)	V. Sec (usft)	DLeg (%/100usft)
11,246.0	88.55	155.78	6,926.7	-4,282.1	1,633.2	4,582.1	2.77
11,336.0	89.43	158.24	6,928.3	-4,364.9	1,668.4	4,672.1	2.90
11,426.0	89.60	159.30	6,929.1	-4,448.8	1,700.9	4,762.0	1.19
11,515.0	88.72	158.77	6,930.4	-4,531.9	1,732.8	4,851.0	1.15
11,605.0	88.37	162.02	6,932.6	-4,616.6	1,763.0	4,940.9	3.63
11,695.0	89.25	162.99	6,934.5	-4,702.4	1,790.0	5,030.6	1.46
11,785.0	89.87	164.22	6,935.2	-4,788.8	1,815.4	5,120.2	1.53
11,874.0	88.02	160.62	6,936.8	-4,873.6	1,842.3	5,208.9	4.55
11,964.0	89.60	158.24	6,938.7	-4,957.8	1,873.9	5,298.8	3.17
12,054.0	89.60	158.51	6,939.3	-5,041.5	1,907.1	5,388.8	0.30
12,143.0	89.16	157.54	6,940.3	-5,124.0	1,940.4	5,477.8	1.20
12,233.0	88.46	155.87	6,942.2	-5,206.7	1,976.0	5,567.8	2.01
12,323.0	89.43	157.80	6,943.8	-5,289.4	2,011.3	5,657.7	2.40
12,413.0	89.43	157.10	6,944.7	-5,372.5	2,045.9	5,747.7	0.78
12,502.0	88.72	157.10	6,946.2	-5,454.5	2,080.5	5,836.7	0.80
12,592.0	89.52	157.80	6,947.5	-5,537.6	2,115.0	5,926.7	1.18
12,682.0	89.34	157.63	6,948.4	-5,620.9	2,149.1	6,016.7	0.28
12,772.0	89.08	156.40	6,949.7	-5,703.7	2,184.3	6,106.6	1.40
12,861.0	89.78	156.84	6,950.6	-5,785.4	2,219.6	6,195.6	0.93
12,951.0	89.16	154.90	6,951.4	-5,867.5	2,256.4	6,285.5	2.26
13,041.0	89.69	157.54	6,952.3	-5,949.9	2,292.7	6,375.5	2.99
13,130.0	90.13	158.95	6,952.4	-6,032.5	2,325.6	6,464.5	1.66
13,220.0	88.02	158.33	6,953.9	-6,116.3	2,358.4	6,553.5	2.44
13,310.0	88.11	156.93	6,956.9	-6,199.5	2,392.6	6,644.4	1.56
13,399.0	90.75	158.24	6,957.8	-6,281.8	2,426.6	6,733.4	3.31
13,489.0	91.10	157.63	6,956.4	-6,365.2	2,460.4	6,823.4	0.78
13,579.0	88.81	156.05	6,956.4	-6,447.9	2,495.8	6,913.3	3.09
13,669.0	89.16	157.45	6,958.0	-6,530.6	2,531.3	7,003.3	1.60
13,758.0	89.78	158.77	6,958.9	-6,613.2	2,564.5	7,092.3	1.64
13,848.0	89.34	158.24	6,959.5	-6,696.9	2,597.5	7,182.3	0.77
13,937.0	89.78	158.68	6,960.2	-6,779.7	2,630.1	7,271.3	0.70
14,027.0	90.48	159.83	6,960.0	-6,863.8	2,662.0	7,361.3	1.50
14,117.0	89.78	159.74	6,959.8	-6,948.3	2,693.1	7,451.2	0.78
14,206.0	89.96	160.88	6,960.0	-7,032.1	2,723.1	7,540.1	1.30
14,296.0	89.69	161.06	6,960.3	-7,117.2	2,752.4	7,630.0	0.36
14,385.0	86.88	157.01	6,963.0	-7,200.2	2,784.3	7,718.9	5.54
14,475.0	89.69	156.57	6,965.7	-7,282.9	2,819.7	7,808.9	3.16
14,565.0	91.36	159.21	6,964.8	-7,366.3	2,853.6	7,898.9	3.47
14,655.0	90.22	158.33	6,963.6	-7,450.1	2,886.2	7,988.8	1.60
14,744.0	91.45	160.53	6,962.3	-7,533.4	2,917.4	8,077.8	2.83
14,834.0	90.13	159.83	6,961.1	-7,618.1	2,947.9	8,167.7	1.66
14,924.0	90.75	159.56	6,960.4	-7,702.5	2,979.2	8,257.7	0.75
15,014.0	90.92	157.54	6,959.1	-7,786.3	3,012.1	8,347.7	2.25
15,103.0	91.45	155.78	6,957.2	-7,868.0	3,047.3	8,436.6	2.06

RECEIVED
Office of Oil and Gas
OCT 19 2015
WV Department of
Environmental Protection

17-06496



EOW Completion Report



Company: Antero	Local Co-ordinate Reference: Well Weinhold Unit 2H
Project: Doddridge County WV	TVD Reference: Precision 525: GL 1135' + KB 19' @ 1154.0usft
Site: Melody Pad	MD Reference: Precision 525: GL 1135' + KB 19' @ 1154.0usft
Well: Weinhold Unit 2H	North Reference: Grid
Wellbore: Original Wellpath	Survey Calculation Method: Minimum Curvature
Design: As Drilled	Database: Oklahoma District

Survey

MD (usft)	Inc (°)	Azi (azimuth) (°)	TVD (usft)	N/S (usft)	E/W (usft)	V. Sec (usft)	DLeg (°/100usft)
15,193.0	91.36	157.10	6,955.0	-7,950.4	3,083.3	8,526.6	1.47
15,282.0	91.63	155.26	6,952.7	-8,031.8	3,119.2	8,615.5	2.09
15,372.0	91.63	154.99	6,950.1	-8,113.4	3,157.1	8,705.3	0.30
15,461.0	91.80	156.22	6,947.5	-8,194.4	3,193.8	8,794.2	1.39
15,551.0	92.33	155.61	6,944.2	-8,276.6	3,230.5	8,884.1	0.90
15,641.0	91.80	156.49	6,941.0	-8,358.8	3,267.0	8,974.0	1.14
15,731.0	92.15	156.84	6,937.9	-8,441.3	3,302.6	9,063.9	0.55
15,820.0	92.24	156.66	6,934.5	-8,523.1	3,337.8	9,152.8	0.23
15,910.0	90.84	157.89	6,932.0	-8,606.0	3,372.5	9,242.8	2.07
15,925.0	90.13	157.01	6,931.9	-8,619.9	3,378.3	9,257.8	7.54
15,984.0	90.13	157.01	6,931.8	-8,674.2	3,401.3	9,316.7	0.00

Design Annotations

Measured Depth (usft)	Vertical Depth (usft)	Local Coordinates		Comment
		+N/-S (usft)	+E/-W (usft)	
6,652.0	6,634.8	-83.1	36.2	Middlesex
6,837.0	6,767.9	-208.0	58.2	Burket
6,888.0	6,797.0	-249.2	65.9	Tully
7,011.0	6,849.1	-358.1	88.1	Marcellus

RECEIVED
 Date: _____
 Office of Oil and Gas
OCT 19 2015
 WV Department of
 Environmental Protection

Checked By: _____ Approved By: _____