



NOBLE ENERGY

Location: Doddridge Co., WV
Field: Doddridge
Facility: OXE-97 Pad

Slot: Slot B
Well: OXF-97B-HS
Wellbore: OXF-97B-HS.PWB



Per reference wellbore in OXF-97B-HS.PWB Rev-A-0
True vertical depths are referenced to Precision 643 (RKB)
Measured depths are referenced to Precision 643 (RKB)
Precision 543 (RKB) to Mean Sea Level: 335.48 feet
Mean Sea Level to Mud Line (At Slot B): -1333.48 feet
Conversions from true vertical depths to slot

Grid System: NAD83
North Reference: OXF-97 Pad
Scale: True distance
Datum: Mean Sea Level
Coordinate units: feet referenced to slot

Location Information

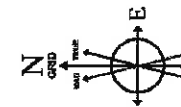
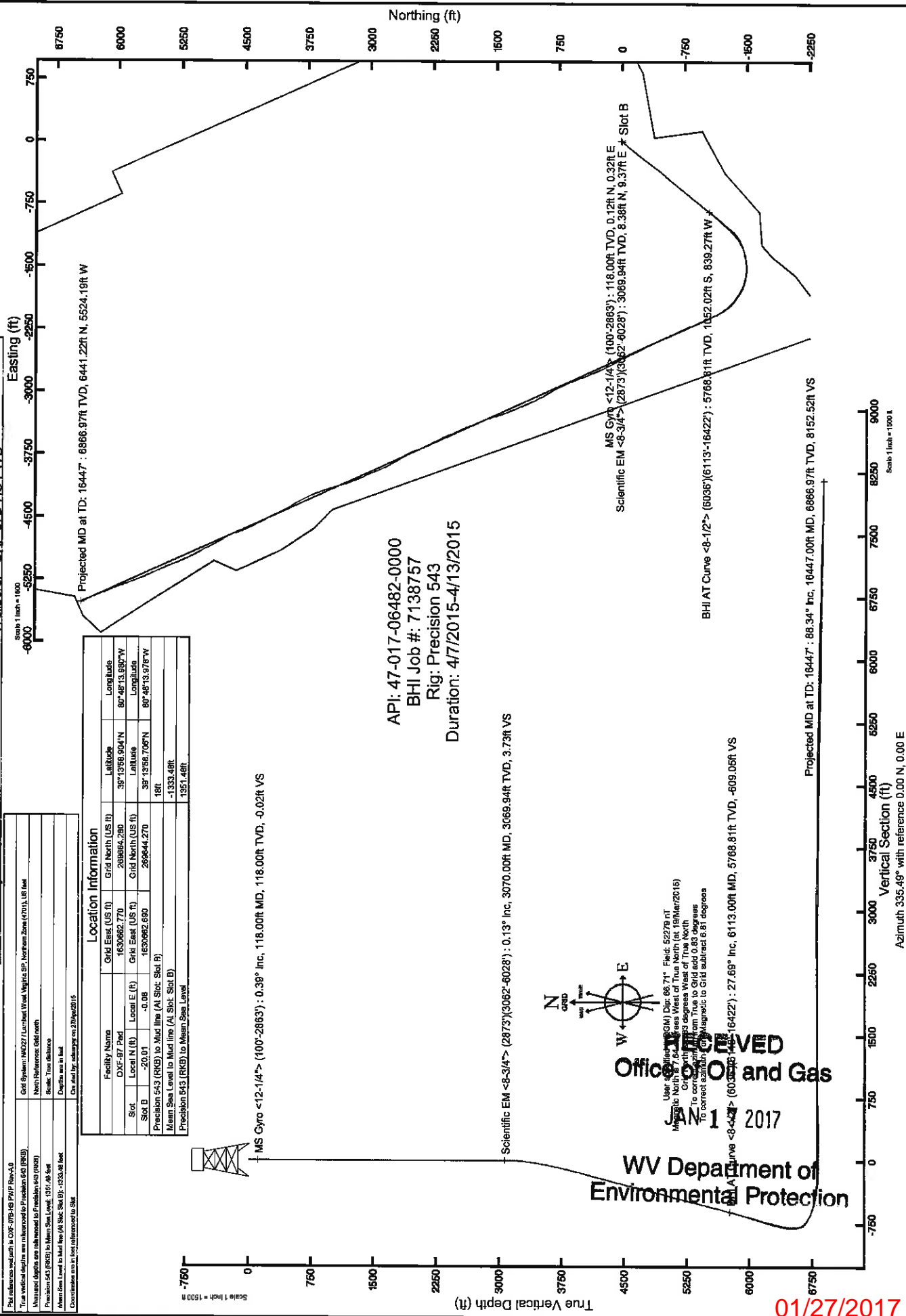
Facility Name	Grid East (US ft)	Grid North (US ft)	Latitude	Longitude
OXF-97 Pad	1630662.770	2698654.290	39°13'56.904"N	80°48'13.950"W
Slot	Local E (ft)	Grid North (US ft)	Latitude	Longitude
Slot B	-200.01	1630662.630	39°13'56.706"N	80°48'13.978"W
Precision 543 (RKB) to Mud Line (At Slot B)		2698444.270	18ft	
Mean Sea Level to Mud Line (At Slot B)			-1333.48ft	
Precision 543 (RKB) to Mean Sea Level			1351.48ft	

MS Gyro <12-1/4"> (100°-2863') : 0.39° Inc, 118.00ft MD, 118.00ft TVD, -0.02ft VS

Scientific EM <8-3/4"> (2873)(3062'-6028') : 0.13° Inc, 3070.00ft MD, 3069.94ft TVD, 3.73ft VS

BHI AT Curve <8-1/2"> (6036')(6113'-16422') : 5768.81ft TVD, 1052.02ft S, 839.27ft W

MS Gyro <12-1/4"> (100°-2863') : 118.00ft TVD, 0.12ft N, 0.32ft E
Scientific EM <8-3/4"> (2873)(3062'-6028') : 3069.94ft TVD, 8.38ft N, 9.37ft E



User: [redacted] Dir: 66.71° Field: 52279 ft
 Mean Sea Level to Grid: 335.48 feet West of True North (at 18Mar2016)
 To correct from Grid to True North
 To correct azimuth from True to Grid add 0.88 degrees
 To correct azimuth from Grid to True subtract 0.88 degrees

Office of Oil and Gas
JAN 17 2017
WV Department of Environmental Protection

1/10/2017

Scale 1 inch = 1000 ft

Vertical Section (ft)

Azimuth 335.48° with reference 0.00 N, 0.00 E

Projected MD at TD: 16447' : 88.34° Inc, 16447.00ft MD, 6866.97ft TVD, 8152.52ft VS



Actual Wellpath Report

OXF-97B-HS AWP Proj: 16447'
Page 1 of 10



REFERENCE WELLPATH IDENTIFICATION

Operator	NOBLE ENERGY	Slot	Slot B
Area	Doddridge Co., WV	Well	OXF-97B-HS
Field	Doddridge	Wellbore	OXF-97B-HS AWB
Facility	OXF-97 Pad		

REPORT SETUP INFORMATION

Projection System	NAD27 / Lambert West Virginia SP, Northern Zone (4701), US feet	Software System	WellArchitect@ 4.0.1
North Reference	Grid	User	Edsaryar
Scale	0.999964	Report Generated	27/Apr/2015 at 10:41
Convergence at slot	0.83° West	Database/Source file	WellArchitect\EasternDB\OXF-97B-HS_AWB.xml

WELLPATH LOCATION

	Local coordinates		Grid coordinates		Geographic coordinates	
	North[ft]	East[ft]	Easting[US ft]	Northing[US ft]	Latitude	Longitude
Slot Location	-20.01	-0.08	1630662.69	269644.27	39°13'58.706"N	80°48'13.978"W
Facility Reference Pt			1630662.77	269664.28	39°13'58.904"N	80°48'13.980"W
Field Reference Pt			609601.22	0.00	38°23'48.753"N	84°21'09.765"W

WELLPATH DATUM

Calculation method	Minimum curvature	Precision 543 (RKB) to Facility Vertical Datum	1351.48ft
Horizontal Reference Pt	Slot	Precision 543 (RKB) to Mean Sea Level	1351.48ft
Vertical Reference Pt	Precision 543 (RKB)	Precision 543 (RKB) to Mud Line at Slot (Slot B)	18.00ft
MD Reference Pt	Precision 543 (RKB)	Section Origin	N 0.00, E 0.00 ft
Field Vertical Reference Pt	Mean Sea Level	Section Azimuth	335.49°

RECEIVED
Office of Oil and Gas
JAN 17 2017

WV Department of
Environmental Protection



Actual Wellpath Report

OXF-97B-HS AWP Proj: 16447
Page 2 of 10



REFERENCE WELLPATH IDENTIFICATION

Operator	NOBLE ENERGY	Slot	Slot B
Area	Doddridge Co., WV	Well	OXF-97B-HS
Field	Doddridge	Wellbore	OXF-97B-HS AWB
Facility	OXF-97 Pad		

WELLPATH DATA (186 stations) † = interpolated/extrapolated station

MD [ft]	Inclination [°]	Azimuth [°]	TVD [ft]	Vert Sect [ft]	North [ft]	East [ft]	Grid East [US ft]	Grid North [US ft]	Latitude	Longitude	Closure Dist [ft]	Closure Dir [°]	DLS [°/100ft]	Build Rate [°/100ft]	Turn Rate [°/100ft]
0.00	0.000	68.550	0.00	0.00	0.00	0.00	269644.27	269644.27	39°13'58.706"N	80°48'13.978"W	0.00	0.000	0.00	0.00	0.00
18.00	0.000	68.550	18.00	0.00	0.00	0.00	269644.27	269644.27	39°13'58.706"N	80°48'13.978"W	0.00	0.000	0.00	0.00	0.00
118.00	0.390	68.550	118.00	-0.02	0.12	0.32	269644.39	269644.39	39°13'58.707"N	80°48'13.974"W	0.34	68.550	0.39	0.39	0.00
218.00	0.330	54.660	218.00	0.02	0.42	0.87	269644.69	269644.69	39°13'58.710"N	80°48'13.967"W	0.96	64.432	0.11	-0.06	-13.89
318.00	0.350	36.490	318.00	0.21	0.88	1.29	269645.09	269645.09	39°13'58.714"N	80°48'13.961"W	1.35	52.251	0.11	0.13	1.17
418.00	0.420	54.510	417.99	0.42	1.27	1.78	269645.54	269645.54	39°13'58.719"N	80°48'13.955"W	2.19	54.459	0.13	0.07	16.02
518.00	0.410	65.470	517.99	0.49	1.63	2.41	269645.90	269645.90	39°13'58.722"N	80°48'13.947"W	2.91	55.812	0.08	-0.01	10.96
618.00	0.370	57.560	617.99	0.53	1.96	3.00	269646.23	269646.23	39°13'58.726"N	80°48'13.940"W	3.58	56.929	0.07	-0.04	-7.91
718.00	0.260	37.000	717.99	0.69	2.31	3.41	269646.58	269646.58	39°13'58.729"N	80°48'13.935"W	4.12	55.903	0.16	-0.11	-20.56
818.00	0.210	30.000	817.99	0.92	2.66	4.01	269646.92	269646.92	39°13'58.733"N	80°48'13.930"W	4.69	53.942	0.13	0.13	-7.40
918.00	0.160	34.350	917.99	1.19	2.97	3.63	269647.24	269647.24	39°13'58.736"N	80°48'13.932"W	4.69	50.727	0.13	-0.05	-38.65
1018.00	0.200	327.200	1017.99	1.51	3.25	3.49	269647.52	269647.52	39°13'58.739"N	80°48'13.934"W	4.77	47.071	0.06	0.04	-14.15
1118.00	0.180	303.640	1117.98	1.81	3.48	3.27	269647.75	269647.75	39°13'58.741"N	80°48'13.937"W	4.77	43.171	0.08	-0.02	-23.56
1218.00	0.180	295.150	1217.98	2.07	3.63	2.99	269647.90	269647.90	39°13'58.742"N	80°48'13.940"W	4.71	39.466	0.03	0.00	-8.49
1318.00	0.210	279.520	1317.98	2.35	3.79	3.09	269648.04	269648.04	39°13'58.743"N	80°48'13.943"W	4.63	35.995	0.12	0.13	-1.13
1418.00	0.210	291.340	1417.98	2.61	3.95	2.36	269648.22	269648.22	39°13'58.745"N	80°48'13.948"W	4.60	30.875	0.03	0.00	-7.58
1518.00	0.200	341.830	1517.98	2.94	4.20	2.13	269648.47	269648.47	39°13'58.748"N	80°48'13.951"W	4.71	26.829	0.19	0.02	50.49
1618.00	0.270	332.860	1617.98	3.20	4.45	2.04	269648.72	269648.72	39°13'58.750"N	80°48'13.953"W	4.89	24.587	0.16	-0.16	-8.97
1718.00	0.200	386.900	1717.98	3.18	4.52	2.24	269648.78	269648.78	39°13'58.751"N	80°48'13.950"W	5.04	26.414	0.31	0.20	114.04
1818.00	0.200	377.120	1817.98	2.99	4.32	2.68	269648.85	269648.85	39°13'58.751"N	80°48'13.949"W	5.33	32.441	0.11	0.13	1.04
1918.00	0.200	377.120	1917.98	2.69	4.61	3.64	269648.88	269648.88	39°13'58.752"N	80°48'13.932"W	5.87	38.254	0.18	0.14	-14.72
2018.00	0.200	368.180	2017.98	2.57	4.92	4.60	269649.19	269649.19	39°13'58.755"N	80°48'13.920"W	6.74	43.106	0.13	0.09	-8.94
2118.00	0.200	350.850	2117.98	2.58	5.38	5.57	269649.65	269649.65	39°13'58.760"N	80°48'13.908"W	7.75	46.011	0.08	-0.03	-7.33
2218.00	0.450	338.350	2217.96	2.68	5.86	6.39	269650.13	269650.13	39°13'58.765"N	80°48'13.898"W	8.67	47.501	0.11	-0.11	-2.50
2318.00	0.540	331.710	2317.96	2.68	6.23	7.21	269650.58	269650.58	39°13'58.769"N	80°48'13.891"W	9.53	44.171	0.11	0.13	12.41
2418.00	0.640	320.270	2417.96	2.93	6.84	7.96	269651.11	269651.11	39°13'58.775"N	80°48'13.878"W	10.50	49.307	0.40	0.10	-38.52
2518.00	0.350	304.060	2517.96	3.38	7.56	8.44	269651.83	269651.83	39°13'58.782"N	80°48'13.872"W	11.33	48.121	0.29	-0.29	0.79
2618.00	0.230	312.880	2617.95	3.59	7.94	8.76	269652.21	269652.21	39°13'58.786"N	80°48'13.868"W	11.83	47.815	0.15	-0.12	17.22
2718.00	0.260	305.960	2717.95	3.56	8.08	9.15	269652.35	269652.35	39°13'58.787"N	80°48'13.863"W	12.21	48.529	0.15	0.03	34.68
2818.00	0.200	301.000	2817.95	3.30	8.24	9.04	269652.53	269652.53	39°13'58.787"N	80°48'13.861"W	12.53	44.976	0.05	0.04	6.68



Actual Wellpath Report

OXF-97B-HS AWP Proj: 16447
Page 3 of 10



REFERENCE WELLPATH IDENTIFICATION

Operator	NOBLE ENERGY	Slot	Slot B
Area	Doddridge Co., WV	Well	OXF-97B-HS
Field	Doddridge	Wellbore	OXF-97B-HS AWB
Facility	OXF-97 Pad		

WELLPATH DATA (186 stations)

MD [ft]	Inclination [°]	Azimuth [°]	TVD [ft]	Vert Sect [ft]	North [ft]	East [ft]	Grid East [US ft]	Grid North [US ft]	Latitude	Longitude	Closure Dist [ft]	Closure Dir [°]	DLS [°/100ft]	Build Rate [°/100ft]	Turn Rate [°/100ft]
2881.00	0.260	282.360	2880.94	3.38	8.12	9.66	1630672.35	269652.39	39°13'58.788"N	80°48'13.856"W	12.62	49.966	0.89	-0.06	-269.33
3070.00	0.130	37.640	3069.94	3.73	8.38	9.37	1630672.06	269652.65	39°13'58.790"N	80°48'13.860"W	12.57	48.209	0.18	-0.07	60.99
3100.00	0.480	231.200	3099.94	3.72	8.33	9.30	1630671.99	269652.60	39°13'58.790"N	80°48'13.861"W	12.48	48.150	2.02	1.17	-554.80
3130.00	1.960	218.450	3129.94	3.46	7.85	8.88	1630671.57	269652.11	39°13'58.785"N	80°48'13.866"W	11.85	48.536	4.99	4.93	-42.50
3150.00	3.840	217.740	3139.94	2.75	6.04	7.95	1630670.44	269650.41	39°13'58.783"N	80°48'13.871"W	10.46	49.113	6.74	6.74	0.00
3190.00	6.010	216.350	3189.78	1.51	4.58	6.41	1630669.10	269648.85	39°13'58.752"N	80°48'13.897"W	7.88	54.453	7.24	7.23	-3.23
3251.00	10.480	216.430	3250.14	-2.74	-2.46	1.22	1630663.91	269641.81	39°13'58.682"N	80°48'13.962"W	2.74	153.601	7.33	7.33	0.13
3341.00	16.280	216.790	3337.66	-12.79	-19.16	-11.21	1630651.48	269625.11	39°13'58.515"N	80°48'14.117"W	22.20	210.320	6.45	6.44	0.40
3435.00	20.340	218.880	3426.88	-26.44	-42.44	-29.36	1630633.33	269601.83	39°13'58.282"N	80°48'14.343"W	51.61	214.674	4.37	4.32	2.22
3524.00	21.240	216.330	3511.66	-41.39	-68.28	-49.97	1630591.72	269577.46	39°13'58.047"N	80°48'14.607"W	94.93	216.841	2.11	2.11	0.00
3618.00	23.890	218.800	3596.30	-57.72	-96.47	-72.45	1630590.24	269547.81	39°13'57.742"N	80°48'14.881"W	120.65	216.909	1.78	1.77	0.52
3709.00	26.380	219.560	3678.67	-74.84	-126.42	-96.88	1630565.81	269517.85	39°13'57.443"N	80°48'15.185"W	159.27	217.464	2.76	2.74	0.84
3800.00	28.290	219.050	3759.51	-93.28	-158.76	-123.34	1630539.35	269485.52	39°13'57.119"N	80°48'15.516"W	201.04	217.845	2.11	2.10	-0.56
3891.00	28.890	219.170	3839.41	-112.63	-192.55	-150.81	1630511.88	269451.73	39°13'56.781"N	80°48'15.859"W	244.58	218.070	0.66	0.66	0.13
3981.00	28.870	217.110	3916.24	-132.31	-240.58	-171.87	1630484.47	269417.15	39°13'56.497"N	80°48'16.207"W	289.01	218.141	0.68	0.68	0.00
4072.00	28.260	216.220	3998.18	-153.00	-261.20	-204.08	1630458.62	269383.08	39°13'56.095"N	80°48'16.523"W	331.47	218.001	1.08	-0.62	-1.86
4163.00	28.870	217.000	4078.11	-174.01	-296.13	-230.03	1630432.67	269348.15	39°13'55.746"N	80°48'16.846"W	374.97	217.840	0.79	0.67	0.86
4255.00	30.510	217.930	4158.03	-195.41	-332.29	-257.76	1630404.94	269312.00	39°13'55.385"N	80°48'17.192"W	420.54	217.801	1.85	1.78	1.01
4345.00	30.120	216.660	4235.72	-216.94	-368.47	-285.23	1630377.48	269275.82	39°13'55.024"N	80°48'17.534"W	465.96	217.743	0.92	-0.43	-1.61
4435.00	28.700	216.540	4314.70	-239.87	-404.82	-312.18	1630350.32	269240.37	39°13'54.662"N	80°48'17.876"W	511.05	217.657	0.99	0.91	1.51
4528.00	28.820	218.000	4393.18	-259.11	-439.92	-339.56	1630323.15	269204.37	39°13'54.310"N	80°48'18.211"W	555.72	217.663	1.04	-0.51	1.87
4610.00	28.140	218.000	4472.26	-277.06	-470.59	-363.81	1630298.89	269173.70	39°13'54.003"N	80°48'18.514"W	594.82	217.707	0.91	-0.83	-0.79
4701.00	29.610	218.000	4551.95	-294.84	-504.44	-391.81	1630270.89	269139.85	39°13'53.664"N	80°48'18.863"W	638.73	217.838	2.31	1.62	3.42
4792.00	30.270	218.000	4631.81	-311.27	-538.50	-421.85	1630240.86	269105.79	39°13'53.324"N	80°48'19.239"W	684.06	218.074	0.79	0.73	0.62
4882.00	29.550	217.000	4711.50	-328.88	-574.34	-451.87	1630213.78	269071.46	39°13'52.981"N	80°48'19.613"W	729.31	218.084	0.83	0.84	0.17
4973.00	30.520	216.000	4791.96	-346.51	-607.43	-482.05	1630180.65	269036.87	39°13'52.634"N	80°48'19.991"W	775.46	218.436	0.53	0.19	-0.99
5064.00	31.120	216.000	4870.11	-364.28	-643.19	-511.97	1630150.74	269001.11	39°13'52.276"N	80°48'20.364"W	822.07	218.519	0.83	0.66	-0.98
5155.00	31.830	216.000	4949.72	-382.08	-680.10	-541.88	1630120.83	268964.20	39°13'51.907"N	80°48'20.738"W	869.58	218.547	0.93	0.78	-0.98
5246.00	31.100	216.770	5015.34	-415.44	-717.18	-571.56	1630091.15	268927.11	39°13'51.536"N	80°48'21.108"W	917.08	218.553	0.81	-0.80	0.21
5337.00	30.000	217.370	5093.59	-436.11	-754.36	-601.11	1630061.41	268890.00	39°13'51.175"N	80°48'21.477"W	963.87	218.562	0.74	0.74	0.00



Actual Wellpath Report

OXF-97B-HS AWP Proj: 16447
Page 4 of 10



WELLPATH IDENTIFICATION

Operator	NOBLE ENERGY	Slot	Slot B
Area	Doddridge Co., WV	Well	OXF-97B-HS
Field	Doddridge	Wellbore	OXF-97B-HS AWB
Facility	OXF-97 Pad		

WELLPATH DATA (186 stations)

MD [ft]	Inclination [°]	Azimuth [°]	TVD [ft]	Vert Sect [ft]	North [ft]	East [ft]	Grid East [US ft]	Grid North [US ft]	Latitude	Longitude	Closure Dist [ft]	Closure Dir [°]	DL/S [°/100ft]	Build Rate [°/100ft]	Turn Rate [°/100ft]
5428.00	29.520	218.910	5172.07	-456.45	-788.90	-630.01	1630032.70	268855.40	39°13'50.819"N	80°48'21.837"W	1009.59	218.611	1.45	-1.41	-0.67
5518.00	29.660	218.290	5250.33	-476.55	-823.63	-657.74	1630004.98	268820.67	39°13'50.472"N	80°48'22.183"W	1054.03	218.610	0.37	0.16	-0.69
5612.00	29.690	218.300	5332.00	-497.82	-860.15	-686.58	1629976.14	268784.15	39°13'50.107"N	80°48'22.543"W	1100.57	218.597	0.03	0.03	0.01
5703.00	29.340	219.590	5411.19	-517.85	-895.02	-714.75	1629947.96	268749.28	39°13'49.758"N	80°48'22.895"W	1145.40	218.610	0.80	-0.38	1.42
5794.00	29.820	219.250	5568.24	-557.17	-964.37	-772.08	1629890.64	268679.94	39°13'49.064"N	80°48'23.610"W	1235.36	218.681	0.37	-0.24	-0.54
5975.00	29.590	217.830	5647.28	-577.60	-999.64	-800.18	1629862.54	268644.67	39°13'48.712"N	80°48'23.961"W	1280.45	218.676	0.81	-0.25	-1.56
6036.00	28.020	216.380	5700.73	-591.57	-1023.07	-817.92	1629844.80	268621.24	39°13'48.478"N	80°48'24.182"W	1309.83	218.641	2.82	-2.57	-2.38
6113.00	27.690	216.450	5768.81	-609.05	-1052.02	-839.27	1629823.45	268592.29	39°13'48.189"N	80°48'24.448"W	1345.78	218.582	0.43	-0.43	0.09
6203.00	31.320	218.770	5847.12	-629.97	-1087.24	-865.31	1629799.91	268557.08	39°13'47.851"N	80°48'24.724"W	1390.13	218.582	1.19	-0.07	0.25
6292.00	34.990	222.710	5921.61	-650.40	-1124.18	-897.87	1629764.85	268520.13	39°13'47.467"N	80°48'25.179"W	1438.73	218.614	4.91	4.09	4.99
6382.00	35.070	222.430	5995.31	-670.51	-1162.23	-932.82	1629729.91	268482.09	39°13'47.086"N	80°48'25.616"W	1490.27	218.751	0.20	0.09	-0.31
6471.00	35.560	222.500	6067.93	-690.64	-1200.18	-967.55	1629695.17	268444.14	39°13'46.706"N	80°48'26.050"W	1541.62	218.875	0.55	0.55	0.08
6561.00	35.670	221.070	6141.10	-711.71	-1239.26	-1002.47	1629660.25	268405.06	39°13'46.315"N	80°48'26.487"W	1593.96	218.970	0.93	0.12	-1.59
6650.00	35.040	225.520	6214.44	-732.15	-1277.91	-1037.37	1629625.39	268366.74	39°13'45.931"N	80°48'26.923"W	1645.71	219.071	1.31	1.19	1.75
6740.00	35.560	224.750	6286.62	-751.20	-1315.20	-1073.84	1629588.89	268329.11	39°13'45.554"N	80°48'27.380"W	1697.91	219.231	0.80	-0.07	1.37
6829.00	37.800	227.560	6357.99	-768.77	-1352.00	-1112.20	1629550.54	268292.32	39°13'45.185"N	80°48'27.860"W	1750.68	219.442	3.14	2.52	3.16
6919.00	40.860	232.820	6427.62	-783.73	-1388.42	-1156.03	1629506.70	268255.90	39°13'44.818"N	80°48'28.410"W	1806.68	219.782	5.03	3.40	5.84
7008.00	45.200	240.840	6492.71	-792.68	-1421.44	-1206.86	1629455.87	268222.89	39°13'44.485"N	80°48'29.050"W	1864.67	220.333	7.84	4.88	9.01
7098.00	51.080	244.040	6557.25	-795.70	-1458.11	-1247.04	1629405.01	268184.41	39°13'44.191"N	80°48'29.720"W	1922.65	221.195	9.82	7.33	11.94
7187.00	60.390	253.550	6601.77	-786.71	-1474.44	-1337.52	1629325.22	268169.88	39°13'43.942"N	80°48'30.700"W	1990.71	222.212	10.76	9.45	6.20
7277.00	69.730	260.490	6639.71	-770.24	-1492.55	-1416.93	1629245.82	268151.77	39°13'43.752"N	80°48'31.706"W	2058.01	223.511	12.51	10.38	7.71
7366.00	72.940	267.230	6668.22	-743.65	-1501.52	-1500.70	1629162.05	268142.81	39°13'43.651"N	80°48'32.769"W	2122.89	224.984	8.03	3.61	7.57
7457.00	73.880	278.860	6694.28	-703.36	-1496.87	-1587.61	1629075.14	268147.45	39°13'43.684"N	80°48'33.874"W	2182.00	226.685	12.29	1.03	12.78
7545.00	73.640	284.330	6718.76	-683.57	-1479.89	-1679.38	1628982.47	268144.44	39°13'43.849"N	80°48'34.989"W	2241.10	228.484	15.97	-0.05	16.72
7635.00	73.780	294.070	6743.91	-593.93	-1451.51	-1751.89	1628910.87	268192.82	39°13'44.109"N	80°48'35.970"W	2275.08	230.357	10.39	-0.07	10.82
7724.00	76.800	300.960	6766.54	-526.11	-1411.74	-1828.16	1628834.60	268232.59	39°13'44.491"N	80°48'36.946"W	2309.80	232.324	8.22	3.39	7.74
7814.00	79.850	307.500	6784.77	-450.81	-1362.17	-1900.96	1628761.80	268282.15	39°13'44.971"N	80°48'37.881"W	2338.63	234.376	7.88	3.39	7.27
7904.00	81.040	317.000	6799.74	-369.35	-1302.56	-1966.57	1628696.19	268341.76	39°13'45.550"N	80°48'38.725"W	2358.83	236.481	10.49	1.32	10.56
8000.00	84.230	327.150	6811.36	-280.88	-1230.34	-2027.35	1628641.12	268413.77	39°13'46.244"N	80°48'39.641"W	2367.34	238.681	11.73	1.47	11.36

01/27/2017



Actual Wellpath Report

OXF-97B-HS AWP Proj: 16447
Page 5 of 10



REFERENCE WELLPATH IDENTIFICATION

Operator	NOBLE ENERGY	Slot	Slot B
Area	Doddridge Co., WV	Well	OXF-97B-HS
Field	Doddridge	Wellbore	OXF-97B-HS AWB
Facility	OXF-97 Pad		

WELLPATH DATA (186 stations)

MID [ft]	Inclination [°]	Azimuth [°]	TVD [ft]	Vert Sect [ft]	North [ft]	East [ft]	Grid East [US ft]	Grid North [US ft]	Latitude	Longitude	Closure Dist [ft]	Closure Dir [°]	DLS [°/100ft]	Build Rate [°/100ft]	Turn Rate [°/100ft]
8083.00	86.830	332.960	6818.35	-194.35	-1155.30	-2065.42	1628597.35	268489.02	39°13'46.991"N	80°48'40.009"W	2366.58	240.779	6.99	2.99	6.33
8173.00	90.000	333.680	6820.84	-104.46	-1074.92	-2105.81	1628556.96	268569.39	39°13'47.780"N	80°48'40.537"W	2364.30	242.958	3.61	3.52	0.80
8262.00	89.940	334.520	6820.88	-15.49	-994.86	-2144.69	1628518.09	268649.45	39°13'48.565"N	80°48'41.045"W	2364.20	245.115	0.95	-0.07	0.94
8351.00	89.910	339.090	6821.00	73.47	-913.08	-2179.73	1628483.77	268731.23	39°13'49.369"N	80°48'41.506"W	2363.25	247.271	0.95	-0.03	5.13
8441.00	90.370	339.230	6820.78	163.28	-876.97	-2211.15	1628441.02	268813.40	39°13'50.195"N	80°48'42.028"W	2361.80	249.454	0.92	0.18	0.16
8530.00	90.030	334.670	6820.47	252.23	-747.09	-2246.59	1628416.19	268897.20	39°13'50.999"N	80°48'42.386"W	2367.55	251.606	5.14	-0.38	-5.12
8620.00	90.920	335.680	6819.72	342.22	-665.42	-2284.37	1628378.41	268978.88	39°13'51.801"N	80°48'42.881"W	2379.31	253.760	1.50	0.99	1.12
8709.00	91.200	334.740	6818.08	431.20	-584.63	-2321.68	1628341.10	269059.66	39°13'52.594"N	80°48'43.371"W	2394.16	255.866	1.10	0.31	-1.06
8799.00	91.390	334.640	6816.04	521.17	-503.29	-2360.15	1628302.63	269141.00	39°13'53.392"N	80°48'43.874"W	2413.21	257.962	0.24	0.21	-0.11
8888.00	91.480	333.980	6813.81	610.17	-423.94	-2398.77	1628264.05	269223.18	39°13'54.190"N	80°48'44.380"W	2435.81	260.046	0.84	0.11	0.18
8978.00	91.320	334.380	6811.62	700.07	-342.18	-2438.02	1628224.77	269302.10	39°13'54.973"N	80°48'44.894"W	2461.91	262.011	0.56	-0.18	0.53
9067.00	91.450	330.840	6809.46	788.92	-263.19	-2478.94	1628183.84	269381.09	39°13'55.748"N	80°48'45.429"W	2492.87	263.940	3.98	0.15	-3.98
9157.00	90.860	336.170	6807.65	878.81	-182.69	-2519.07	1628143.72	269461.59	39°13'56.538"N	80°48'45.953"W	2525.68	265.852	5.96	-0.66	5.92
9246.00	90.950	335.030	6806.24	967.80	-101.65	-2555.83	1628106.96	269542.62	39°13'57.333"N	80°48'46.436"W	2557.85	267.722	1.28	0.10	-1.28
9335.00	91.050	334.580	6804.09	1057.14	-21.81	-2593.19	1628070.00	269623.47	39°13'58.130"N	80°48'46.940"W	2595.18	269.511	2.74	0.11	2.74
9425.00	91.080	330.810	6803.02	1146.53	57.42	-2637.76	1628025.03	269701.69	39°13'58.894"N	80°48'47.506"W	2638.38	271.247	1.98	0.03	-1.98
9514.00	90.220	331.110	6802.01	1235.24	135.23	-2680.96	1627981.83	269779.49	39°13'59.656"N	80°48'48.070"W	2684.37	272.888	1.02	-0.97	0.34
9604.00	90.430	335.190	6801.50	1325.15	215.50	-2721.60	1627941.19	269859.77	39°14'00.444"N	80°48'48.601"W	2730.12	274.527	4.54	0.23	4.53
9694.00	90.550	337.390	6800.73	1415.13	297.90	-2757.78	1627905.01	269942.16	39°14'01.253"N	80°48'49.076"W	2773.83	276.165	2.45	0.13	2.44
9783.00	90.500	337.000	6799.57	1504.06	380.18	-2791.71	1627871.00	270024.43	39°14'02.061"N	80°48'49.522"W	2817.71	277.753	0.86	0.03	0.86
9878.00	90.000	336.940	6799.42	1599.01	467.86	-2828.26	1627834.54	270112.11	39°14'02.922"N	80°48'50.003"W	2866.69	279.393	1.07	-0.58	-0.91
9962.00	90.030	340.860	6799.39	1682.85	546.21	-2858.49	1627804.31	270190.46	39°14'03.692"N	80°48'50.402"W	2910.21	280.818	4.67	0.04	4.67
10052.00	90.280	337.510	6799.15	1772.65	630.33	-2890.47	1627772.33	270274.57	39°14'04.519"N	80°48'50.824"W	2958.40	282.302	3.73	0.28	-3.72
10141.00	90.340	333.400	6798.67	1861.62	711.27	-2927.43	1627735.37	270355.51	39°14'05.314"N	80°48'51.309"W	3012.60	283.656	4.62	0.07	-4.62
10230.00	90.470	330.440	6798.10	1951.43	796.03	-2963.00	1627692.44	270431.67	39°14'06.092"N	80°48'51.802"W	3071.30	285.047	3.80	0.03	3.80
10320.00	90.430	329.740	6797.58	2040.03	867.73	-3014.30	1627648.50	270511.97	39°14'06.847"N	80°48'52.442"W	3136.72	286.060	0.69	0.13	-0.67
10410.00	90.740	331.790	6796.66	2129.71	946.26	-3058.25	1627604.55	270590.49	39°14'07.617"N	80°48'53.015"W	3201.30	287.193	2.30	0.34	2.28
10499.00	90.800	333.410	6795.47	2218.59	1025.26	-3099.21	1627563.60	270669.50	39°14'08.392"N	80°48'53.550"W	3264.39	288.305	1.82	0.07	1.82
10589.00	90.680	335.710	6794.30	2308.56	1106.53	-3137.86	1627524.95	270750.75	39°14'09.189"N	80°48'54.056"W	3327.25	289.425	2.56	-0.13	2.56
10678.00	90.800	334.340	6793.10	2397.51	1188.53	-3172.91	1627484.00	270832.18	39°14'10.000"N	80°48'54.560"W	3390.00	290.540	1.80	0.11	1.80



Actual Wellpath Report

OXF-97B-HS AWP Proj: 16447

Page 6 of 10



REFERENCE WELLPATH IDENTIFICATION

Operator	NOBLE ENERGY	Slot	Slot B
Area	Doddridge Co., WV	Well	OXF-97B-HS
Field	Doddridge	Wellbore	OXF-97B-HS AWB
Facility	OXF-97 Pad		

WELLPATH DATA (186 stations)

MD [ft]	Inclination [°]	Azimuth [°]	TVD [ft]	Vert Sect [ft]	North [ft]	East [ft]	Grid East [US ft]	Grid North [US ft]	Latitude	Longitude	Closure Dist [ft]	Closure Dir [°]	DLS [°/100ft]	Build Rate [°/100ft]	Turn Rate [°/100ft]
10768.00	91.260	335.430	6791.54	2487.44	1271.44	-3207.36	1627453.46	270915.66	39°14'10.809"N	80°48'54.970"W	3450.17	291.624	3.70	0.51	-3.67
10857.00	91.110	338.810	6789.70	2576.38	1353.40	-3241.95	1627420.87	270997.62	39°14'11.614"N	80°48'55.425"W	3513.11	292.659	3.80	-0.17	3.80
10947.00	91.170	341.900	6787.90	2666.02	1438.14	-3272.19	1627390.62	271082.35	39°14'12.447"N	80°48'55.825"W	3574.28	293.726	3.43	0.07	3.43
11036.00	91.420	342.650	6785.89	2754.38	1522.89	-3299.28	1627363.53	271167.10	39°14'13.281"N	80°48'56.185"W	3633.79	294.777	0.89	0.28	0.84
11126.00	90.830	337.690	6783.10	2933.89	1691.18	-3362.89	1627299.92	271335.39	39°14'14.935"N	80°48'57.024"W	3764.19	296.698	0.84	0.20	-0.81
11305.00	89.350	337.860	6782.96	3022.82	1773.57	-3396.56	1627266.26	271417.77	39°14'15.744"N	80°48'57.468"W	3831.73	297.572	1.67	-1.66	0.19
11395.00	88.520	337.020	6784.64	3112.75	1856.67	-3431.08	1627231.74	271500.87	39°14'16.560"N	80°48'57.922"W	3901.22	298.419	1.31	-0.92	-0.93
11485.00	87.910	336.180	6787.44	3202.69	1939.22	-3466.80	1627196.02	271583.42	39°14'17.371"N	80°48'58.391"W	3972.32	299.221	1.15	-0.68	-0.93
11574.00	87.490	335.110	6790.15	3294.55	2026.57	-3502.77	1627160.15	271666.16	39°14'18.181"N	80°48'58.892"W	4043.83	300.000	0.72	-0.34	0.63
11663.00	88.860	334.990	6793.29	3380.58	2101.55	-3539.59	1627123.23	271745.74	39°14'18.965"N	80°48'59.346"W	4116.46	300.699	1.69	1.13	-1.26
11763.00	88.860	331.540	6795.28	3480.47	2190.83	-3584.56	1627078.26	271835.01	39°14'19.841"N	80°48'59.934"W	4201.05	301.433	3.45	0.00	-3.45
11842.00	89.450	335.020	6796.44	3559.39	2261.37	-3620.08	1627042.75	271905.56	39°14'20.533"N	80°49'00.399"W	4268.34	301.992	4.47	0.75	4.41
11932.00	89.140	335.590	6797.55	3649.39	2343.13	-3657.67	1627005.16	271987.32	39°14'21.335"N	80°49'00.892"W	4343.83	302.644	0.72	-0.34	0.63
12021.00	89.490	337.460	6798.04	3740.04	2426.80	-3695.27	1626967.49	272069.50	39°14'22.147"N	80°49'01.385"W	4419.36	303.297	1.53	0.74	1.52
12111.00	90.370	335.550	6798.75	3828.32	2507.54	-3728.42	1626934.41	272151.71	39°14'22.950"N	80°49'01.822"W	4493.21	303.923	2.78	1.00	-2.60
12201.00	89.940	327.990	6798.51	3918.07	2586.77	-3770.96	1626891.87	272230.95	39°14'23.727"N	80°49'02.377"W	4572.92	304.449	8.41	-0.48	-8.40
12290.00	89.910	326.160	6798.42	4006.11	2661.48	-3819.34	1626843.50	272305.64	39°14'24.458"N	80°49'03.006"W	4655.19	304.870	2.06	-0.03	-2.06
12379.00	89.910	331.660	6798.26	4094.49	2737.66	-3865.28	1626797.56	272381.83	39°14'25.204"N	80°49'03.604"W	4736.58	305.309	6.18	0.00	6.18
12468.00	89.910	334.890	6798.01	4182.81	2812.00	-3912.78	1626751.45	272458.17	39°14'25.997"N	80°49'04.192"W	4817.97	305.716	0.84	0.00	0.84
12559.00	89.690	338.210	6798.22	4274.38	2899.53	-3941.68	1626721.15	272544.69	39°14'26.803"N	80°49'04.605"W	4893.87	306.348	3.80	-0.24	3.79
12648.00	90.090	338.250	6798.89	4363.28	2988.18	-3974.69	1626688.15	272627.34	39°14'27.615"N	80°49'05.040"W	4969.67	306.890	0.45	0.45	0.04
12738.00	89.940	332.290	6798.87	4453.23	3078.89	-4012.33	1626650.52	272709.05	39°14'28.417"N	80°49'05.533"W	5048.99	307.375	6.62	-0.17	-6.62
12827.00	89.850	337.410	6798.53	4542.20	3171.43	-4050.14	1626612.71	272789.58	39°14'29.207"N	80°49'06.029"W	5128.09	307.834	5.75	-0.10	5.75
12916.00	89.910	340.110	6798.08	4631.04	3263.51	-4088.27	1626575.45	272869.17	39°14'30.003"N	80°49'06.522"W	5208.58	308.283	0.84	0.00	0.84
13006.00	89.660	343.270	6798.07	4720.51	3353.79	-4110.70	1626552.15	272957.93	39°14'30.862"N	80°49'06.830"W	5280.06	308.874	3.56	0.24	3.55
13096.00	89.780	343.460	6798.02	4809.66	3440.02	-4136.46	1626526.39	273044.16	39°14'31.711"N	80°49'07.173"W	5354.48	309.419	0.25	0.13	0.21
13185.00	89.140	342.560	6802.05	4897.89	3485.13	-4162.46	1626500.38	273129.27	39°14'32.548"N	80°49'07.520"W	5428.83	309.939	1.24	-0.72	-1.01
13275.00	88.950	340.350	6803.55	4987.38	3570.44	-4191.08	1626471.77	273214.57	39°14'33.387"N	80°49'07.899"W	5505.74	310.428	2.46	-0.21	-2.46



Actual Wellpath Report

OXF-97B-HS AWP Proj: 16447
Page 7 of 10



REFERENCE WELLPATH IDENTIFICATION

Operator	NOBLE ENERGY	Slot	Slot B
Area	Doddridge Co., WV	Well	OXF-97B-HS
Field	Doddridge	Wellbore	OXF-97B-HS AWB
Facility	OXF-97 Pad		

WELLPATH DATA (186 stations)

MD [ft]	Inclination [°]	Azimuth [°]	TVD [ft]	Vert Sect [ft]	North [ft]	East [ft]	Grid East [US ft]	Grid North [US ft]	Latitude	Longitude	Closure Dist [ft]	Closure Dir [°]	DLS [°/100ft]	Build Rate [°/100ft]	Turn Rate [°/100ft]
13454.00	88.920	333.890	6806.86	5166.11	3736.01	-4258.77	1626404.08	273380.14	39°14'35.014"N	80°49'08.791"W	5665.23	311.259	5.06	-0.03	-5.06
13544.00	88.980	332.610	6808.50	5256.03	3816.36	-4299.27	1626363.58	273460.49	39°14'35.802"N	80°49'09.320"W	5748.77	311.595	1.42	0.07	-1.42
13633.00	89.480	329.690	6809.70	5344.75	3894.30	-4342.21	1626320.65	273538.42	39°14'36.566"N	80°49'09.880"W	5832.70	311.887	3.33	0.56	-3.28
13723.00	89.450	327.640	6810.54	5434.11	3971.16	-4389.01	1626273.85	273615.28	39°14'37.319"N	80°49'10.490"W	5918.91	312.139	2.28	-0.03	-2.28
13813.00	89.350	331.700	6811.18	5523.93	4049.00	-4434.14	1626228.72	273691.12	39°14'38.081"N	80°49'11.071"W	6004.64	312.490	3.91	0.11	3.90
13902.00	89.200	335.740	6812.61	5612.60	4128.94	-4473.22	1626189.64	273773.05	39°14'38.866"N	80°49'11.589"W	6087.51	312.708	4.04	-0.17	4.03
13992.00	89.170	333.470	6813.89	5702.57	4210.23	-4511.81	1626151.05	273854.34	39°14'39.663"N	80°49'12.095"W	6171.09	313.020	2.52	-0.03	-2.52
14081.00	89.020	331.820	6815.30	5791.45	4289.26	-4552.70	1626110.16	273933.37	39°14'40.439"N	80°49'12.629"W	6254.98	313.293	1.86	-0.17	-1.85
14171.00	89.110	333.180	6816.77	5881.31	4369.08	-4594.25	1626068.62	274013.18	39°14'41.221"N	80°49'13.172"W	6340.03	313.561	1.51	0.10	1.51
14260.00	89.200	331.810	6818.04	5970.27	4448.71	-4633.33	1626028.96	274092.81	39°14'42.014"N	80°49'13.727"W	6427.16	313.830	0.90	0.18	0.89
14350.00	89.230	338.970	6819.31	6060.20	4531.14	-4670.01	1625992.86	274175.24	39°14'42.812"N	80°49'14.165"W	6506.93	314.135	5.74	0.03	5.74
14439.00	88.900	343.500	6820.76	6148.71	4615.38	-4698.63	1625964.24	274259.47	39°14'43.640"N	80°49'14.545"W	6586.26	314.488	5.10	-0.37	5.09
14529.00	88.800	328.870	6822.58	6238.44	4697.47	-4734.86	1625928.01	274341.56	39°14'44.446"N	80°49'15.021"W	6669.72	314.773	16.25	-0.11	-16.26
14618.00	88.890	326.920	6824.38	6326.64	4772.84	-4782.15	1625880.72	274416.93	39°14'45.184"N	80°49'15.636"W	6756.40	314.944	2.19	0.10	-2.19
14708.00	89.350	332.010	6826.35	6414.09	4857.42	-4827.95	1625835.33	274494.40	39°14'45.933"N	80°49'16.211"W	6843.11	315.131	5.37	0.37	5.36
14797.00	88.860	332.630	6828.40	6504.93	4929.11	-4869.18	1625793.69	274573.19	39°14'46.716"N	80°49'16.771"W	6928.57	315.350	0.78	0.35	0.70
14887.00	88.770	331.240	6830.26	6594.74	5008.51	-4911.51	1625751.36	274652.59	39°14'47.495"N	80°49'17.324"W	7014.85	315.560	1.55	-0.10	-1.54
14976.00	88.770	331.610	6832.17	6683.49	5086.60	-4954.07	1625708.80	274730.73	39°14'48.261"N	80°49'17.880"W	7100.48	315.756	0.42	0.00	0.42
15066.00	88.740	334.190	6834.13	6772.37	5166.78	-4995.06	1625667.82	274810.82	39°14'49.046"N	80°49'18.415"W	7186.50	315.968	2.87	-0.03	2.87
15156.00	88.810	336.190	6836.06	6860.31	5247.30	-5035.30	1625628.40	274891.01	39°14'49.831"N	80°49'18.940"W	7270.94	316.180	2.82	0.07	2.81
15245.00	88.830	338.470	6837.90	6948.27	5330.60	-5076.84	1625596.04	274974.70	39°14'50.655"N	80°49'19.358"W	7354.49	316.453	2.36	0.03	2.36
15334.00	88.830	335.150	6839.72	7038.22	5412.41	-5118.88	1625561.00	275056.48	39°14'51.459"N	80°49'19.819"W	7437.97	316.692	3.73	0.00	-3.73
15424.00	88.860	335.680	6841.53	7130.20	5494.20	-5159.31	1625523.57	275138.30	39°14'52.262"N	80°49'20.310"W	7523.24	316.912	0.59	0.03	0.59
15513.00	88.800	336.170	6843.35	7222.18	5575.48	-5200.61	1625487.27	275219.53	39°14'53.059"N	80°49'20.787"W	7607.42	317.130	0.55	-0.07	0.55
15603.00	88.800	336.120	6845.17	7314.16	5657.43	-5242.32	1625450.17	275301.51	39°14'53.844"N	80°49'21.244"W	7691.64	317.345	1.72	0.07	1.71
15692.00	88.830	337.600	6846.98	7406.12	5738.96	-5284.40	1625414.49	275383.01	39°14'54.664"N	80°49'21.742"W	7776.97	317.556	2.79	-0.03	2.79
15782.00	88.580	340.370	6849.01	7498.92	5822.94	-5328.66	1625382.23	275466.99	39°14'55.490"N	80°49'22.168"W	7860.79	317.796	3.09	-0.28	3.08
15871.00	88.800	341.070	6851.05	7591.53	5906.93	-5370.04	1625352.85	275550.97	39°14'56.315"N	80°49'22.557"W	7942.81	318.046	0.82	0.25	0.79
15961.00	88.650	338.460	6853.05	7687.25	5991.34	-5411.16	1625321.73	275635.39	39°14'57.145"N	80°49'22.968"W	8026.47	318.284	2.90	-0.17	-2.90
16050.00	88.600	336.800	6855.07	7781.14	6075.91	-5452.02	1625292.81	275717.65	39°14'57.923"N	80°49'23.380"W	8109.60	318.500	1.52	0.44	1.51



Actual Wellpath Report

OXF-97B-HS AWP Proj: 16447'
Page 8 of 10



REFERENCE WELLPATH IDENTIFICATION

Operator	NOBLE ENERGY	Slot	Slot B
Area	Doddridge Co., WV	Well	OXF-97B-HS
Field	Doddridge	Wellbore	OXF-97B-HS AWB
Facility	OXF-97 Pad		

WELLPATH DATA (186 stations)

MD [ft]	Inclination [°]	Azimuth [°]	TVD [ft]	Vert Sect [ft]	North [ft]	East [ft]	Grid East [US ft]	Grid North [US ft]	Latitude	Longitude	Closure Dist [ft]	Closure Dir [°]	DLS [°/100ft]	Build Rate [°/100ft]	Turn Rate [°/100ft]
16140.00	88.340	339.150	6858.15	7846.02	6157.00	-5408.75	1625254.15	275801.04	39°14'58.772"N	80°49'23.859"W	8195.32	318.702	2.61	0.11	2.61
16229.00	88.370	339.710	6860.71	7934.77	6240.29	-5440.01	1625222.89	275884.33	39°14'59.591"N	80°49'24.271"W	8278.58	318.920	0.63	0.03	0.63
16318.00	88.340	337.630	6863.26	8023.59	6323.16	-5472.36	1625190.53	275967.19	39°15'00.405"N	80°49'24.698"W	8362.36	319.126	2.34	-0.03	-2.34
16408.00	88.370	335.570	6865.85	8113.53	6405.72	-5508.09	1625154.81	276049.74	39°15'01.216"N	80°49'25.168"W	8448.21	319.309	2.29	0.03	-2.29
16447.00	88.340	335.610	6866.97	8152.52	6441.22	-5524.19	1625138.71	276085.25	39°15'01.565"N	80°49'25.379"W	8485.64	319.383	0.00	0.00	0.00

TARGETS

Name	MD [ft]	TVD [ft]	North [ft]	East [ft]	Grid East [US ft]	Grid North [US ft]	Latitude	Longitude	Shape
OXF-97B-HS LP Rev-2		6807.00	-1113.86	-2085.04	1628577.73	268530.45	39°13'47.398"N	80°48'40.266"W	point
OXF-97B-HS WPI Rev-2		6807.00	1750.93	-3391.20	1627271.62	271395.13	39°14'15.521"N	80°48'57.395"W	point
OXF-97B-HS WP2 Rev-2		6822.00	3570.82	-4220.96	1626441.89	273214.95	39°14'33.387"N	80°49'08.279"W	point
OXF-97B-HS BHL Rev-2		6867.00	6438.22	-5528.31	1625134.59	276082.25	39°15'01.534"N	80°49'25.431"W	point
OXF-97 LL		7198.00	20.01	0.08	1630662.77	269664.28	39°13'58.904"N	80°48'13.980"W	polygon

RECEIVED
Office of Oil and Gas
JAN 17 2017
WV Department of
Environmental Protection



Actual Wellpath Report

OXF-97B-HS AWP Proj: 16447

Page 9 of 10



REFERENCE WELLPATH IDENTIFICATION

Operator	NOBLE ENERGY	Slot	Slot B
Area	Doddridge Co., WV	Well	OXF-97B-HS
Field	Doddridge	Wellbore	OXF-97B-HS AWB
Facility	OXF-97 Pad		

WELLPATH COMPOSITION - Ref Wellbore: OXF-97B-HS AWB Ref Wellpath: OXF-97B-HS AWP Proj: 16447

Start MD [ft]	End MD [ft]	Positional Uncertainty Model	Log Name/Comment	Wellbore
18.00	2881.00	Generic gyro - northseeking (Standard)	01_MS Gyro <12-1/4"> (100'-2863')	OXF-97B-HS AWB
2881.00	6036.00	ISWASA MWD, Rev. 2 (Standard)	02 Scientific EM <8-3/4"> (2873')(3062'-6028')	OXF-97B-HS AWB
6036.00	16422.00	NaviTrak (AT Curve Short Spaced)	03 BHI AT Curve <8-1/2"> (6036')(6113'-16422')	OXF-97B-HS AWB
16422.00	16447.00	Blind Drilling (sid)	Projection to bit	OXF-97B-HS AWB

RECEIVED
Office of Oil and Gas

JAN 17 2017

WV Department of
Environmental Protection



Actual Wellpath Report

OXF-97B-HS AWP Proj: 16447
Page 10 of 10



REFERENCE WELLPATH IDENTIFICATION

Operator	NOBLE ENERGY	Slot	Slot B
Area	Doddridge Co., WV	Well	OXF-97B-HS
Field	Doddridge	Wellbore	OXF-97B-HS AWB
Facility	OXF-97 Pad		

COMMENTS

Wellpath general comments
 API: 47-017-06482-0000
 BHI Job #: 7138757
 Rig: Precision 543
 Duration: 4/7/2015-4/13/2015
 MS Gyro <12-1/4"> (100'-2863')
 Scientific EM <8-3/4"> (2873')(3062'-6028')
 BHI AT Curve <8-1/2"> (6036')(6113'-16422')
 Projected MD at TD: 16447'

RECEIVED
 Office of Oil and Gas

JAN 17 2017

WV Department of
 Environmental Protection