

# RECEIVED

AUG 24 2015

WV GEOLOGICAL SURVEY  
MORGANTOWN, WV



**Life Unit 2H**  
**Doddridge County WV**  
**Northing: 14238384.71**  
**Easting: 1745436.70**  
**As Drilled**



Genie Lightfoot  
9/19, October 14 2014  
Scientific Drilling  
421 South Eagle Lane  
Oklahoma City, OK 73128

**WELL DETAILS** Life Unit 2H  
Ground Level: 1407.0  
Northing: 14238384.71  
Easting: 1745436.70  
Longitude: 80° 37' 45.290 W  
Latitude: 39° 12' 33.741 N

Precision 525 GL 1407 +19 RK8 @ 1428.0usf  
Gr. 1407.0

**LEGEND**

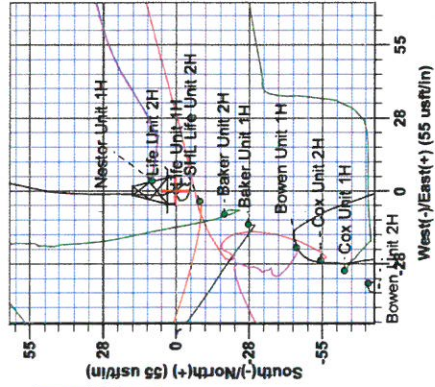
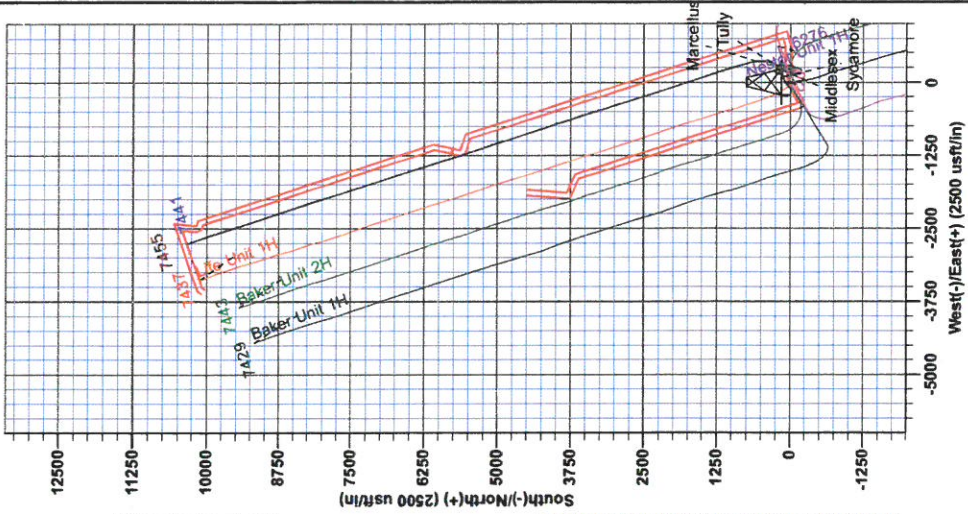
- △ Baker Unit 1H, Original Wellpath, As Drilled V0
- ▽ Cox Unit 2H, Original Wellpath, As Drilled V0
- ◇ Cox Unit 1H, Original Wellpath, As Drilled V0
- ◇ Nestor Unit 1H, Original Wellpath, As Drilled V0
- ◇ Life Unit 1H, Original Wellpath, As Drilled V0
- ◇ Bowen Unit 1H, Original Wellpath, As Drilled V0
- ◇ Baker Unit 2H, Original Wellpath, As Drilled V0
- ◇ Bowen Unit 2H, Original Wellpath, As Drilled V0
- ◇ Life Unit 2H, Original Wellpath, Plan 3 V0
- As Drilled

**PROJECT DETAILS:** Doddridge County WV  
Geodetic System: Universal Transverse Mercator (US Survey Feet)  
Datum: NAD 1983 (NAD83 CONUS)  
Ellipsoid: Clarke 1866  
Zone: Zone 17N (84 W to 78 W)  
System Datum: Mean Sea Level

**SITE DETAILS:** Trent Pad: Bowen/Cox/Life/Baker/Nestor  
Site Center: Cox Unit 2H  
Site Centre Northing: 14238330.29  
Easting: 1745410.61  
Positional Uncertainty: 0.0  
Convergence: 0.23  
Local North: Grid

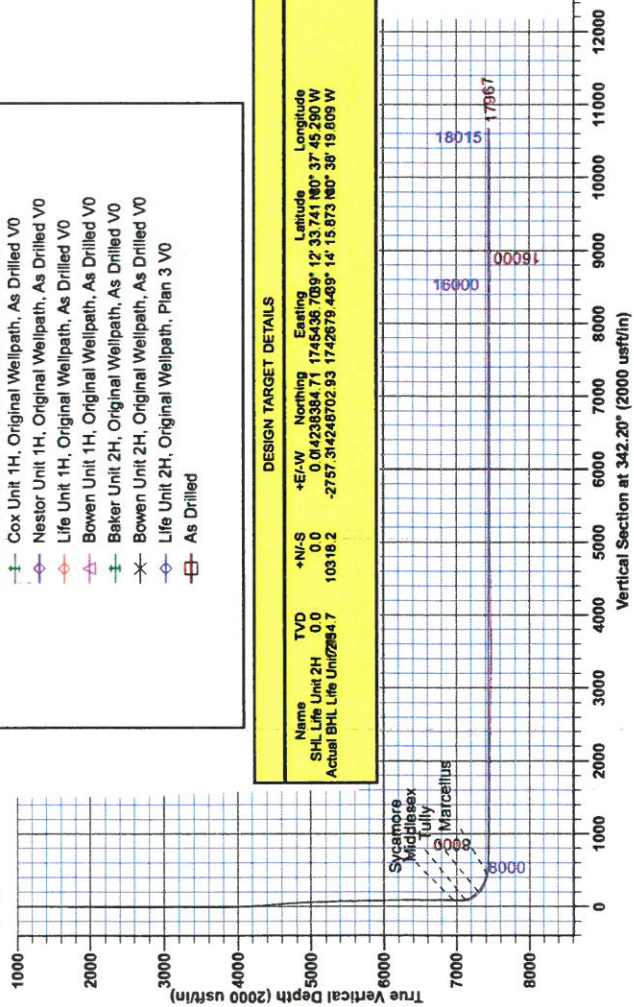
Azimuths to Grid North  
True North: -0.23°  
Magnetic North: -8.79°  
Magnetic Field  
Strength: 52282.6nT  
Dip Angle: 66.75°  
Date: 3/20/2014  
Model: IGRF2010

To convert Magnetic North to Grid, Subtract 8.79°  
To convert True North to Grid, Subtract 0.23°



**DESIGN TARGET DETAILS**

Name	TVD	+N/-S	+E/-W	Northing	Easting	Latitude	Longitude
SHL Life Unit 2H	0.0	0.0	0.0	0.0423838471	1745436.7099	12° 33' 74.1" N	80° 37' 45.290" W
Actual BHL Life Unit 2H	10318.2	10318.2	-2757.31424870293	1742679.4499	14° 15' 87.3" N	80° 38' 19.809" W	





RECEIVED  
AUG 24 2015  
WV GEOLOGICAL SURVEY  
MORGANTOWN, WV

## **Antero Resources**

**Doddridge County WV  
Trent Pad: Bowen/Cox/Life/Baker/Nestor  
Life Unit 2H  
Original Wellpath**

**Design: As Drilled**

## **EOW Completion Report**

**14 October, 2014**





AUG 24 2015



EOW Completion Report



<b>Company:</b>	Antero Resources	<b>Local Co-ordinate Reference:</b>	Well Life Unit 2H
<b>Project:</b>	Doddridge County WV	<b>TVD Reference:</b>	Precision 525 GL 1407 + 19' RKB @ 1426.0usft
<b>Site:</b>	Trent Pad: Bowen/Cox/Life/Baker/Nestor	<b>MD Reference:</b>	Precision 525 GL 1407 + 19' RKB @ 1426.0usft
<b>Well:</b>	Life Unit 2H	<b>North Reference:</b>	Grid
<b>Wellbore:</b>	Original Wellpath	<b>Survey Calculation Method:</b>	Minimum Curvature
<b>Design:</b>	As Drilled	<b>Database:</b>	Oklahoma District

<b>Project</b>	Doddridge County WV, McClellan District		
<b>Map System:</b>	Universal Transverse Mercator (US Survey Feet)	<b>System Datum:</b>	Mean Sea Level
<b>Geo Datum:</b>	NAD 1927 (NADCON CONUS)		
<b>Map Zone:</b>	Zone 17N (84 W to 78 W)		

<b>Site</b>	Trent Pad: Bowen/Cox/Life/Baker/Nestor				
<b>Site Position:</b>		<b>Northing:</b>	14,238,330.29 usft	<b>Latitude:</b>	39° 12' 33.204 N
<b>From:</b>	Map	<b>Easting:</b>	1,745,410.61 usft	<b>Longitude:</b>	80° 37' 45.625 W
<b>Position Uncertainty:</b>	0.0 usft	<b>Slot Radius:</b>	13-3/16"	<b>Grid Convergence:</b>	0.23 °

<b>Well</b>	Life Unit 2H, Marcellus					
<b>Well Position</b>	<b>+N/-S</b>	0.0 usft	<b>Northing:</b>	14,238,384.71 usft	<b>Latitude:</b>	39° 12' 33.741 N
	<b>+E/-W</b>	0.0 usft	<b>Easting:</b>	1,745,436.70 usft	<b>Longitude:</b>	80° 37' 45.290 W
<b>Position Uncertainty</b>	2.0 usft		<b>Wellhead Elevation:</b>	1,426.0 usft	<b>Ground Level:</b>	1,407.0 usft

<b>Wellbore</b>	Original Wellpath				
<b>Magnetics</b>	<b>Model Name</b>	<b>Sample Date</b>	<b>Declination (°)</b>	<b>Dip Angle (°)</b>	<b>Field Strength (nT)</b>
	IGRF2010	3/20/2014	-8.55	66.75	52,263

<b>Design</b>	As Drilled				
<b>Audit Notes:</b>					
<b>Version:</b>	1.0	<b>Phase:</b>	ACTUAL	<b>Tie On Depth:</b>	0.0
<b>Vertical Section:</b>		<b>Depth From (TVD) (usft)</b>	<b>+N/-S (usft)</b>	<b>+E/-W (usft)</b>	<b>Direction (°)</b>
		0.0	0.0	0.0	342.20

<b>Survey Program</b>	Date 10/14/2014				
<b>From (usft)</b>	<b>To (usft)</b>	<b>Survey (Wellbore)</b>	<b>Tool Name</b>	<b>Description</b>	
106.0	6,650.3	Survey #6 Final Gyro (Original Wellpath)	SDI Standard Keeper	Scientific Drilling Intl. Standard Wireline Keeper	
6,689.0	17,967.0	Survey #7 MWD (Original Wellpath)	MWD SDI	MWD - Standard ver 1.0.1	

<b>Survey</b>									
<b>MD (usft)</b>	<b>Inc (°)</b>	<b>Azi (azimuth) (°)</b>	<b>TVD (usft)</b>	<b>N/S (usft)</b>	<b>E/W (usft)</b>	<b>V. Sec (usft)</b>	<b>DLeg (°/100usft)</b>		
0.0	0.00	0.00	0.0	0.0	0.0	0.0	0.0	0.0	0.00
106.0	0.16	267.72	106.0	0.0	-0.1	0.0	0.0	0.0	0.15
206.0	0.31	281.12	206.0	0.0	-0.6	0.2	0.2	0.16	
306.0	0.35	247.73	306.0	0.0	-1.1	0.3	0.3	0.19	
406.0	0.47	244.82	406.0	-0.3	-1.8	0.2	0.2	0.12	
506.0	0.31	222.78	506.0	-0.7	-2.3	0.1	0.1	0.22	
606.0	0.33	241.13	606.0	-1.0	-2.7	-0.1	-0.1	0.10	
706.0	0.14	244.65	706.0	-1.2	-3.1	-0.2	-0.2	0.19	
806.0	0.19	242.22	806.0	-1.3	-3.4	-0.3	-0.3	0.05	
906.0	0.10	305.21	906.0	-1.4	-3.6	-0.2	-0.2	0.17	
1,006.0	0.23	168.26	1,006.0	-1.5	-3.6	-0.3	-0.3	0.31	

AUG 24 2015



**ANTERO** GEOLOGICAL SURVEY  
Resources MORGANTOWN, WV

EOW Completion Report



**Company:** Antero Resources  
**Project:** Doddridge County WV  
**Site:** Trent Pad: Bowen/Cox/Life/Baker/Nestor  
**Well:** Life Unit 2H  
**Wellbore:** Original Wellpath  
**Design:** As Drilled

**Local Co-ordinate Reference:** Well Life Unit 2H  
**TVD Reference:** Precision 525 GL 1407 + 19' RKB @ 1426.0usft  
**MD Reference:** Precision 525 GL 1407 + 19' RKB @ 1426.0usft  
**North Reference:** Grid  
**Survey Calculation Method:** Minimum Curvature  
**Database:** Oklahoma District

**Survey**

MD (usft)	Inc (°)	Azi (azimuth) (°)	TVD (usft)	N/S (usft)	E/W (usft)	V. Sec (usft)	DLeg (°/100usft)
1,106.0	0.13	151.42	1,106.0	-1.8	-3.5	-0.7	0.11
1,206.0	0.28	180.97	1,206.0	-2.2	-3.5	-1.0	0.18
1,306.0	0.12	226.48	1,306.0	-2.5	-3.5	-1.3	0.21
1,406.0	0.25	158.42	1,406.0	-2.7	-3.5	-1.5	0.23
1,506.0	0.15	160.70	1,506.0	-3.1	-3.4	-1.9	0.10
1,606.0	0.30	155.57	1,606.0	-3.4	-3.3	-2.3	0.15
1,706.0	0.26	115.99	1,706.0	-3.8	-3.0	-2.7	0.19
1,806.0	0.38	126.12	1,806.0	-4.1	-2.5	-3.1	0.13
1,906.0	0.31	109.50	1,906.0	-4.4	-2.0	-3.5	0.12
2,006.0	0.44	121.87	2,006.0	-4.6	-1.4	-4.0	0.15
2,106.0	0.45	117.35	2,106.0	-5.0	-0.7	-4.6	0.04
2,206.0	0.58	99.25	2,206.0	-5.3	0.1	-5.1	0.21
2,306.0	0.73	94.98	2,306.0	-5.4	1.3	-5.6	0.16
2,406.0	0.40	97.27	2,406.0	-5.5	2.3	-6.0	0.33
2,506.0	0.35	67.34	2,506.0	-5.5	2.9	-6.1	0.20
2,606.0	0.03	154.24	2,606.0	-5.4	3.2	-6.1	0.35
2,706.0	0.15	20.15	2,706.0	-5.3	3.2	-6.0	0.17
2,806.0	0.23	283.39	2,806.0	-5.1	3.1	-5.8	0.29
2,906.0	0.05	323.86	2,906.0	-5.0	2.9	-5.6	0.19
3,006.0	0.15	281.15	3,006.0	-5.0	2.7	-5.5	0.12
3,106.0	0.13	343.64	3,106.0	-4.8	2.5	-5.4	0.15
3,206.0	0.13	269.69	3,206.0	-4.7	2.4	-5.2	0.16
3,306.0	0.09	320.39	3,306.0	-4.6	2.2	-5.1	0.10
3,406.0	0.05	253.14	3,406.0	-4.6	2.1	-5.0	0.08
3,506.0	0.24	352.80	3,506.0	-4.4	2.1	-4.8	0.25
3,606.0	0.12	72.31	3,606.0	-4.2	2.2	-4.6	0.25
3,706.0	0.19	7.75	3,706.0	-4.0	2.3	-4.5	0.18
3,806.0	0.25	91.57	3,806.0	-3.8	2.5	-4.4	0.30
3,906.0	0.12	356.53	3,906.0	-3.7	2.7	-4.4	0.29
4,006.0	0.16	103.97	4,006.0	-3.6	2.9	-4.3	0.23
4,106.0	3.74	322.39	4,105.9	-1.1	1.0	-1.3	3.87
4,206.0	4.01	349.56	4,205.7	4.9	-1.6	5.2	1.84
4,306.0	5.04	9.78	4,305.4	12.7	-1.5	12.6	1.88
4,406.0	5.04	355.83	4,405.0	21.4	-1.1	20.7	1.22
4,506.0	5.15	2.56	4,504.6	30.3	-1.2	29.2	0.61
4,606.0	5.26	0.41	4,604.2	39.3	-1.0	37.8	0.22
4,706.0	4.66	10.79	4,703.8	47.9	-0.2	45.7	1.08
4,806.0	3.22	13.08	4,803.6	54.6	1.2	51.7	1.45
4,906.0	2.55	12.91	4,903.4	59.5	2.4	56.0	0.67
5,006.0	1.98	9.22	5,003.4	63.4	3.1	59.4	0.59
5,106.0	1.71	8.51	5,103.3	66.6	3.6	62.3	0.27
5,206.0	1.76	11.07	5,203.3	69.6	4.1	65.0	0.09
5,306.0	1.69	13.40	5,303.2	72.5	4.8	67.6	0.10
5,406.0	1.49	10.17	5,403.2	75.2	5.3	70.0	0.22



AUG 24 2015



EOW Completion Report



**Company:** Antero Resources  
**Project:** Doddridge County WV  
**Site:** Trent Pad: Bowen/Cox/Life/Baker/Nestor  
**Well:** Life Unit 2H  
**Wellbore:** Original Wellpath  
**Design:** As Drilled

**Local Co-ordinate Reference:** Well Life Unit 2H  
**TVD Reference:** Precision 525 GL 1407 + 19' RKB @ 1426.0usft  
**MD Reference:** Precision 525 GL 1407 + 19' RKB @ 1426.0usft  
**North Reference:** Grid  
**Survey Calculation Method:** Minimum Curvature  
**Database:** Oklahoma District

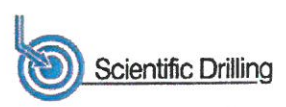
**Survey**

MD (usft)	Inc (°)	Azi (azimuth) (°)	TVD (usft)	N/S (usft)	E/W (usft)	V. Sec (usft)	DLeg (°/100usft)
5,506.0	1.49	6.54	5,503.1	77.8	5.7	72.3	0.09
5,606.0	1.96	13.72	5,603.1	80.8	6.3	75.0	0.52
5,706.0	2.20	16.83	5,703.0	84.3	7.2	78.0	0.27
5,806.0	1.95	20.11	5,803.0	87.7	8.4	80.9	0.28
5,906.0	1.56	25.23	5,902.9	90.5	9.5	83.3	0.42
6,006.0	1.16	26.10	6,002.9	92.7	10.6	85.0	0.40
6,106.0	0.91	32.04	6,102.9	94.2	11.4	86.2	0.27
6,206.0	0.95	40.21	6,202.9	95.6	12.4	87.2	0.14
6,306.0	0.51	35.66	6,302.8	96.5	13.2	87.9	0.44
6,406.0	0.59	45.72	6,402.8	97.3	13.8	88.4	0.13
6,506.0	0.36	75.73	6,502.8	97.7	14.5	88.6	0.33
6,606.0	0.30	56.11	6,602.8	97.9	15.0	88.7	0.13
6,650.3	0.48	123.50	6,647.1	97.9	15.3	88.5	1.03
6,689.0	0.50	76.77	6,685.8	97.8	15.6	88.4	1.01
6,734.0	4.67	75.92	6,730.8	98.3	17.5	88.3	9.27
6,778.0	12.83	69.32	6,774.2	100.5	23.9	88.4	18.66
6,823.0	17.96	62.97	6,817.6	105.4	34.7	89.8	11.98
6,868.0	22.58	66.34	6,859.8	112.0	48.8	91.8	10.59
6,913.0	26.43	70.25	6,900.7	118.9	66.2	93.0	9.28
6,958.0	30.25	73.99	6,940.4	125.4	86.5	93.0	9.36
6,972.0	31.61	74.58	6,952.4	127.4	93.4	92.7	9.97
<b>Sycamore</b>							
7,002.0	34.54	75.71	6,977.5	131.5	109.2	91.9	9.97
7,047.0	38.99	74.60	7,013.5	138.5	135.3	90.5	10.00
7,092.0	43.01	74.59	7,047.5	146.3	163.7	89.2	8.93
7,137.0	43.18	68.80	7,080.4	156.0	192.9	89.5	8.80
7,182.0	43.00	60.79	7,113.3	169.0	220.7	93.5	12.16
7,191.0	42.99	58.89	7,119.8	172.1	226.0	94.8	14.36
<b>Middlesex</b>							
7,227.0	43.26	51.34	7,146.1	186.2	246.1	102.0	14.36
7,271.0	44.31	42.80	7,177.9	206.9	268.4	114.9	13.63
7,316.0	45.64	34.98	7,209.8	231.6	288.3	132.4	12.63
7,361.0	47.63	28.68	7,240.7	259.4	305.5	153.6	11.09
7,406.0	50.50	22.66	7,270.2	290.0	320.2	178.3	11.95
7,443.0	52.91	18.22	7,293.1	317.2	330.3	201.1	11.45
<b>Tully</b>							
7,450.0	53.38	17.41	7,297.3	322.5	332.0	205.6	11.45
7,495.0	57.16	12.73	7,323.0	358.2	341.6	236.7	11.98
7,540.0	60.36	8.71	7,346.3	396.0	348.7	270.5	10.43
7,585.0	64.89	4.96	7,367.0	435.7	353.4	306.8	12.49
7,630.0	68.98	2.14	7,384.6	477.0	356.0	345.4	10.76
7,675.0	72.27	358.97	7,399.6	519.4	356.4	385.6	9.88
7,720.0	75.23	356.12	7,412.2	562.6	354.5	427.3	8.96
7,736.0	76.40	355.07	7,416.1	578.1	353.3	442.4	9.70
<b>Marcellus</b>							

AUG 24 2015



EOW Completion Report



**Company:** Antero Resources  
**Project:** Doddridge County WV  
**Site:** Trent Pad: Bowen/Cox/Life/Baker/Nestor  
**Well:** Life Unit 2H  
**Wellbore:** Original Wellpath  
**Design:** As Drilled

**Local Co-ordinate Reference:** Well Life Unit 2H  
**TVD Reference:** Precision 525 GL 1407 + 19' RKB @ 1426.0usft  
**MD Reference:** Precision 525 GL 1407 + 19' RKB @ 1426.0usft  
**North Reference:** Grid  
**Survey Calculation Method:** Minimum Curvature  
**Database:** Oklahoma District

MD (usft)	Inc (°)	Azi (azimuth) (°)	TVD (usft)	N/S (usft)	E/W (usft)	V. Sec (usft)	DLeg (°/100usft)
7,764.0	78.47	353.27	7,422.2	605.2	350.5	469.1	9.70
7,809.0	82.15	350.54	7,429.7	649.1	344.3	512.8	10.13
7,854.0	83.98	347.94	7,435.2	693.0	336.0	557.2	7.03
7,898.0	86.17	345.92	7,438.9	735.7	326.0	600.8	6.76
7,919.0	87.49	345.83	7,440.1	756.1	320.9	621.8	6.30
7,964.0	89.08	345.31	7,441.5	799.6	309.7	666.7	3.72
8,054.0	90.40	344.34	7,441.9	886.5	286.2	756.6	1.82
8,143.0	90.22	344.16	7,441.4	972.1	262.0	845.5	0.29
8,233.0	87.76	341.35	7,443.0	1,058.1	235.3	935.5	4.15
8,322.0	87.67	341.18	7,446.5	1,142.3	206.8	1,024.4	0.22
8,412.0	88.99	340.74	7,449.1	1,227.3	177.4	1,114.3	1.55
8,501.0	89.43	340.74	7,450.4	1,311.3	148.1	1,203.3	0.49
8,591.0	89.52	340.82	7,451.2	1,396.3	118.4	1,293.3	0.13
8,681.0	89.60	341.44	7,451.9	1,481.5	89.3	1,383.2	0.69
8,770.0	90.13	340.65	7,452.1	1,565.6	60.4	1,472.2	1.07
8,860.0	89.08	341.53	7,452.7	1,650.8	31.3	1,562.2	1.52
8,949.0	89.34	341.26	7,453.9	1,735.1	2.9	1,651.2	0.42
9,039.0	89.96	341.18	7,454.5	1,820.3	-26.1	1,741.2	0.69
9,129.0	89.52	343.55	7,454.9	1,906.1	-53.4	1,831.2	2.68
9,218.0	89.96	343.55	7,455.3	1,991.4	-78.6	1,920.1	0.49
9,308.0	88.64	341.70	7,456.4	2,077.3	-105.5	2,010.1	2.52
9,398.0	88.81	341.44	7,458.4	2,162.7	-133.9	2,100.1	0.35
9,487.0	89.16	342.23	7,460.0	2,247.2	-161.6	2,189.1	0.97
9,577.0	89.16	342.85	7,461.3	2,333.1	-188.6	2,279.1	0.69
9,667.0	89.43	342.32	7,462.4	2,418.9	-215.6	2,369.1	0.66
9,757.0	89.34	342.93	7,463.4	2,504.8	-242.4	2,459.0	0.69
9,846.0	88.37	343.29	7,465.2	2,590.0	-268.3	2,548.0	1.16
9,936.0	88.55	343.55	7,467.6	2,676.2	-294.0	2,638.0	0.35
10,026.0	88.64	343.11	7,469.8	2,762.4	-319.8	2,727.9	0.50
10,115.0	88.81	342.85	7,471.8	2,847.5	-345.8	2,816.9	0.35
10,205.0	88.99	343.11	7,473.5	2,933.5	-372.2	2,906.9	0.35
10,295.0	88.46	341.62	7,475.5	3,019.3	-399.4	2,996.8	1.76
10,385.0	89.87	343.20	7,476.8	3,105.0	-426.6	3,086.8	2.35
10,474.0	90.75	344.08	7,476.3	3,190.4	-451.7	3,175.8	1.40
10,564.0	89.96	341.26	7,475.8	3,276.3	-478.5	3,265.8	3.25
10,654.0	90.04	341.62	7,475.8	3,361.7	-507.1	3,355.8	0.41
10,743.0	90.40	342.32	7,475.4	3,446.3	-534.7	3,444.8	0.88
10,833.0	89.25	341.35	7,475.7	3,531.8	-562.7	3,534.8	1.67
10,923.0	89.60	341.26	7,476.6	3,617.0	-591.6	3,624.7	0.40
11,012.0	90.13	341.53	7,476.8	3,701.4	-620.0	3,713.7	0.67
11,102.0	91.10	344.08	7,475.8	3,787.4	-646.6	3,803.7	3.03
11,192.0	90.66	343.55	7,474.5	3,873.8	-671.7	3,893.7	0.77
11,282.0	90.84	342.14	7,473.3	3,959.8	-698.2	3,983.7	1.58
11,376.0	90.84	341.18	7,471.9	4,049.0	-727.8	4,077.6	1.02



AUG 24 2015



EOW Completion Report



**Company:** Antero Resources  
**Project:** Doddridge County WV  
**Site:** Trent Pad: Bowen/Cox/Life/Baker/Nestor  
**Well:** Life Unit 2H  
**Wellbore:** Original Wellpath  
**Design:** As Drilled

**Local Co-ordinate Reference:** Well Life Unit 2H  
**TVD Reference:** Precision 525 GL 1407 + 19' RKB @ 1426.0usft  
**MD Reference:** Precision 525 GL 1407 + 19' RKB @ 1426.0usft  
**North Reference:** Grid  
**Survey Calculation Method:** Minimum Curvature  
**Database:** Oklahoma District

Survey

MD (usft)	Inc (°)	Azi (azimuth) (°)	TVD (usft)	N/S (usft)	E/W (usft)	V. Sec (usft)	DLeg (°/100usft)
11,469.0	90.22	341.79	7,471.0	4,137.2	-757.3	4,170.6	0.94
11,563.0	90.48	341.26	7,470.5	4,226.3	-787.1	4,264.6	0.63
11,657.0	90.66	341.18	7,469.5	4,315.3	-817.4	4,358.6	0.21
11,751.0	91.36	343.20	7,467.9	4,404.8	-846.1	4,452.6	2.27
11,845.0	90.75	341.09	7,466.1	4,494.2	-874.9	4,546.6	2.34
11,938.0	90.66	341.09	7,465.0	4,582.2	-905.1	4,639.5	0.10
12,032.0	90.57	341.35	7,464.0	4,671.2	-935.3	4,733.5	0.29
12,126.0	91.54	342.06	7,462.3	4,760.4	-964.8	4,827.5	1.28
12,220.0	92.15	342.06	7,459.2	4,849.8	-993.8	4,921.4	0.65
12,313.0	91.10	342.85	7,456.6	4,938.5	-1,021.8	5,014.4	1.41
12,407.0	90.04	342.06	7,455.7	5,028.1	-1,050.1	5,108.4	1.41
12,497.0	89.52	341.70	7,456.0	5,113.6	-1,078.1	5,198.4	0.70
12,587.0	89.60	340.65	7,456.7	5,198.8	-1,107.1	5,288.4	1.17
12,676.0	90.04	340.21	7,457.0	5,282.6	-1,137.0	5,377.3	0.70
12,766.0	89.96	341.18	7,457.0	5,367.6	-1,166.7	5,467.3	1.08
12,855.0	90.04	340.74	7,457.0	5,451.7	-1,195.7	5,556.3	0.50
12,945.0	90.57	340.47	7,456.5	5,536.6	-1,225.6	5,646.2	0.66
13,035.0	89.43	339.95	7,456.5	5,621.3	-1,256.1	5,736.2	1.39
13,124.0	90.31	342.41	7,456.7	5,705.5	-1,284.8	5,825.2	2.94
13,214.0	90.13	343.90	7,456.4	5,791.7	-1,310.9	5,915.1	1.67
13,304.0	89.25	344.43	7,456.8	5,878.2	-1,335.5	6,005.1	1.14
13,393.0	89.78	343.73	7,457.6	5,963.8	-1,359.9	6,094.0	0.99
13,483.0	90.13	343.90	7,457.7	6,050.3	-1,384.9	6,184.0	0.43
13,573.0	90.31	344.08	7,457.3	6,136.8	-1,409.8	6,274.0	0.28
13,662.0	89.25	342.76	7,457.7	6,222.1	-1,435.2	6,362.9	1.90
13,752.0	89.52	342.76	7,458.6	6,308.0	-1,461.8	6,452.9	0.30
13,842.0	89.78	342.41	7,459.2	6,393.9	-1,488.8	6,542.9	0.48
13,932.0	90.40	343.02	7,459.0	6,479.8	-1,515.5	6,632.9	0.97
14,021.0	89.43	341.70	7,459.2	6,564.6	-1,542.5	6,721.9	1.84
14,111.0	89.60	341.97	7,459.9	6,650.1	-1,570.5	6,811.9	0.35
14,201.0	90.04	342.32	7,460.2	6,735.8	-1,598.1	6,901.9	0.62
14,291.0	90.40	341.62	7,459.9	6,821.4	-1,626.0	6,991.9	0.87
14,380.0	90.75	341.70	7,459.0	6,905.9	-1,654.0	7,080.9	0.40
14,470.0	89.69	341.88	7,458.6	6,991.4	-1,682.1	7,170.9	1.19
14,560.0	90.04	341.53	7,458.8	7,076.8	-1,710.4	7,260.9	0.55
14,649.0	90.13	341.53	7,458.7	7,161.2	-1,738.6	7,349.9	0.10
14,739.0	90.20	342.22	7,458.5	7,246.8	-1,766.6	7,439.9	0.77
14,829.0	89.69	342.85	7,458.5	7,332.6	-1,793.6	7,529.9	0.90
14,919.0	90.04	342.49	7,458.8	7,418.5	-1,820.4	7,619.9	0.56
15,008.0	89.60	342.67	7,459.0	7,503.4	-1,847.0	7,708.9	0.53
15,098.0	90.13	342.58	7,459.2	7,589.3	-1,873.9	7,798.9	0.60
15,187.0	89.87	343.20	7,459.2	7,674.4	-1,900.1	7,887.9	0.76
15,277.0	90.48	343.64	7,459.0	7,760.6	-1,925.8	7,977.8	0.84
15,367.0	89.08	342.49	7,459.3	7,846.7	-1,952.0	8,067.8	2.01
15,456.0	89.43	343.02	7,460.5	7,931.7	-1,978.4	8,156.8	0.71

AUG 24 2015



EOW Completion Report



**Company:** Antero Resources  
**Project:** Doddridge County WV  
**Site:** Trent Pad: Bowen/Cox/Life/Baker/Nestor  
**Well:** Life Unit 2H  
**Wellbore:** Original Wellpath  
**Design:** As Drilled

**Local Co-ordinate Reference:** Well Life Unit 2H  
**TVD Reference:** Precision 525 GL 1407 + 19' RKB @ 1426.0usft  
**MD Reference:** Precision 525 GL 1407 + 19' RKB @ 1426.0usft  
**North Reference:** Grid  
**Survey Calculation Method:** Minimum Curvature  
**Database:** Oklahoma District

**Survey**

MD (usft)	Inc (°)	Azi (azimuth) (°)	TVD (usft)	N/S (usft)	E/W (usft)	V. Sec (usft)	DLeg (°/100usft)
15,546.0	90.04	342.58	7,460.9	8,017.7	-2,005.0	8,246.8	0.84
15,636.0	89.23	342.93	7,461.5	8,103.7	-2,031.7	8,336.8	0.98
15,726.0	89.69	344.69	7,462.3	8,190.1	-2,056.8	8,426.8	2.02
15,815.0	88.62	342.36	7,463.6	8,275.4	-2,082.0	8,515.7	2.88
15,905.0	89.16	342.06	7,465.4	8,361.1	-2,109.5	8,605.7	0.69
15,995.0	89.52	341.88	7,466.4	8,446.7	-2,137.3	8,695.7	0.45
16,084.0	90.48	341.26	7,466.4	8,531.1	-2,165.5	8,784.7	1.28
16,174.0	91.10	341.26	7,465.2	8,616.3	-2,194.4	8,874.7	0.69
16,264.0	90.22	342.14	7,464.1	8,701.8	-2,222.6	8,964.6	1.38
16,353.0	90.84	341.53	7,463.3	8,786.3	-2,250.4	9,053.6	0.98
16,443.0	90.40	341.79	7,462.3	8,871.7	-2,278.7	9,143.6	0.57
16,533.0	90.84	343.46	7,461.4	8,957.6	-2,305.6	9,233.6	1.92
16,623.0	89.16	341.18	7,461.4	9,043.4	-2,332.9	9,323.6	3.15
16,713.0	89.25	340.82	7,462.6	9,128.5	-2,362.2	9,413.6	0.41
16,802.0	90.31	342.58	7,462.9	9,212.9	-2,390.1	9,502.6	2.31
16,892.0	90.66	342.14	7,462.2	9,298.7	-2,417.4	9,592.6	0.62
16,981.0	89.60	342.58	7,462.0	9,383.5	-2,444.4	9,681.6	1.29
17,071.0	89.87	343.81	7,462.4	9,469.7	-2,470.4	9,771.6	1.40
17,161.0	89.43	342.06	7,462.9	9,555.7	-2,496.8	9,861.5	2.00
17,250.0	89.96	343.37	7,463.4	9,640.7	-2,523.3	9,950.5	1.59
17,340.0	89.90	342.25	7,463.5	9,726.7	-2,549.9	10,040.5	1.25
17,430.0	90.40	341.53	7,463.3	9,812.2	-2,577.8	10,130.5	0.97
17,519.0	90.92	341.53	7,462.3	9,896.6	-2,606.0	10,219.5	0.58
17,609.0	91.28	341.09	7,460.5	9,981.9	-2,634.9	10,309.5	0.63
17,699.0	90.66	340.12	7,459.0	10,066.7	-2,664.7	10,399.4	1.28
17,789.0	91.44	339.73	7,457.4	10,151.3	-2,695.6	10,489.3	0.97
17,878.0	90.57	339.77	7,455.8	10,234.7	-2,726.4	10,578.3	0.98
17,909.0	90.71	339.73	7,455.5	10,263.8	-2,737.2	10,609.2	0.47
17,967.0	90.71	339.73	7,454.7	10,318.2	-2,757.3	10,667.2	0.00

**Design Annotations**

Measured Depth (usft)	Vertical Depth (usft)	Local Coordinates		Comment
		+N-S (usft)	+E-W (usft)	
6,972.0	6,952.4	127.4	93.4	Sycamore
7,191.0	7,119.8	172.1	226.0	Middlesex
7,443.0	7,293.1	317.2	330.3	Tully
7,736.0	7,416.1	578.1	353.3	Marcellus

Checked By: \_\_\_\_\_ Approved By: \_\_\_\_\_ Date: \_\_\_\_\_