



Baker Unit 2H
Doddridge County WV
Northing: 14238366.57
Easting: 1745428.00
As Drilled



To convert Magnetic North to Grid, Subtract 8.79°
 To convert True North to Grid, Subtract 0.23°

Azimuths to Grid North
 True North: -0.23°
 Magnetic North: -8.79°

Magnetic Field
 Strength: 52262.5snT
 Dip Angle: 66.75°
 Date: 3/20/2014
 Model: IGRF2010

WELL DETAILS Baker Unit 2H						
Ground Level: 1408.0						
+N/-S	+E/-W	Northing	Easting	Latitude	Longitude	
0.0	0.0	14238366.57	1745428.00	39° 12' 33.562 N	80° 37' 45.402 W	

Genie Lightfoot
 9:56, September 26 2014

Scientific Drilling
 421 South Eagle Lane
 Oklahoma City, OK 73128

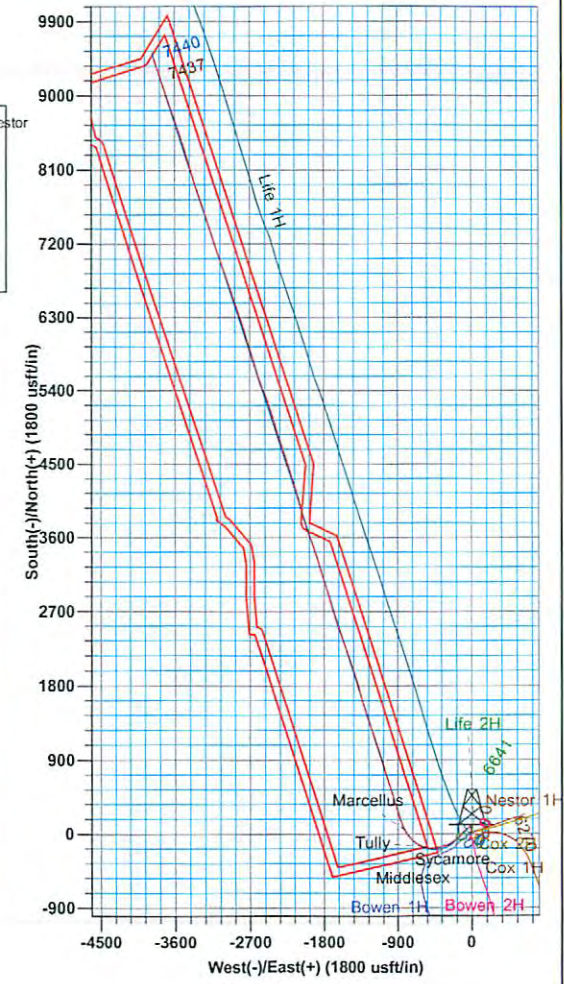
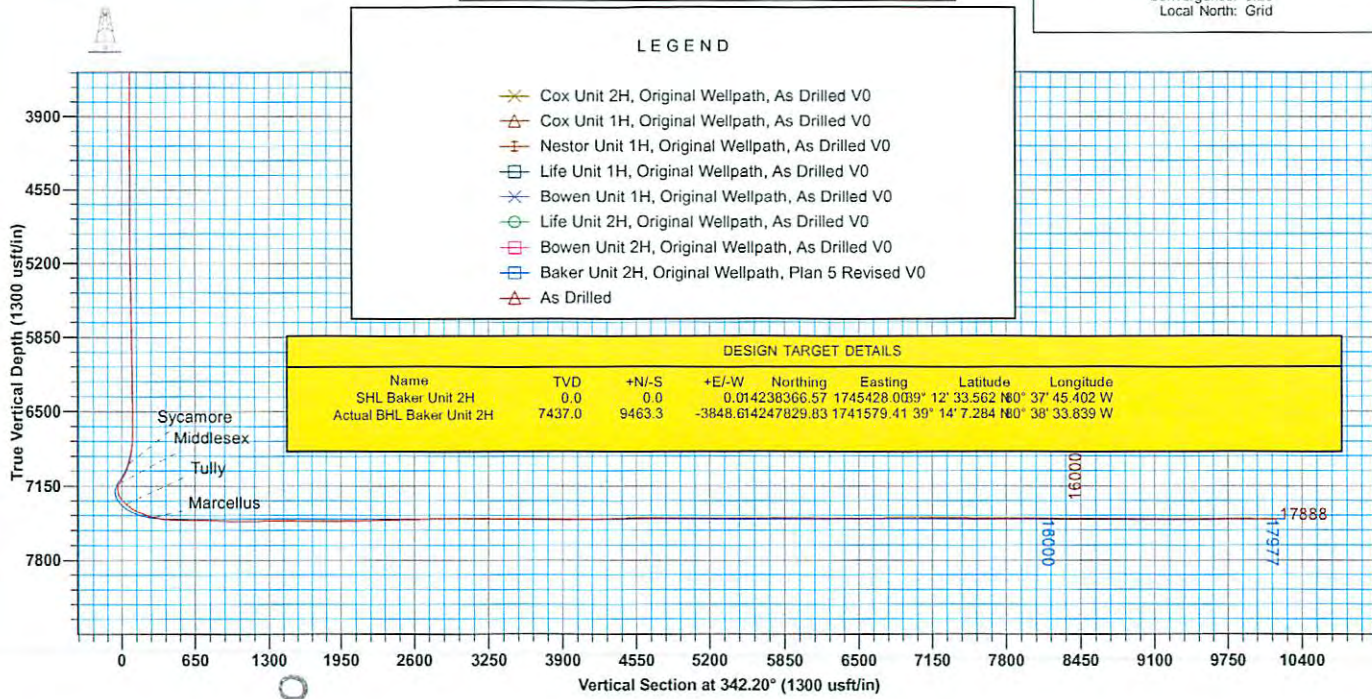
PROJECT DETAILS: Doddridge County WV						
Geodetic System: Universal Transverse Mercator (US Survey Feet)						
Datum: NAD 1927 (NADCON CONUS)						
Ellipsoid: Clarke 1866						
Zone: Zone 17N (84 W to 78 W)						
System Datum: Mean Sea Level						

SITE DETAILS: Trent Pad: Bower/Cox/Life/Baker/Nestor	
Site Center: Cox Unit 2H	
Site Centre Northing:	14238330.29
Site Centre Easting:	1745410.61
Positional Uncertainty:	0.0
Convergence:	0.23
Local North:	Grid

HALL: 1407 GL + 13 Kb @ 1420.0usft
 G: 1408.0

LEGEND	
	Cox Unit 2H, Original Wellpath, As Drilled V0
	Cox Unit 1H, Original Wellpath, As Drilled V0
	Nestor Unit 1H, Original Wellpath, As Drilled V0
	Life Unit 1H, Original Wellpath, As Drilled V0
	Bowen Unit 1H, Original Wellpath, As Drilled V0
	Life Unit 2H, Original Wellpath, As Drilled V0
	Bowen Unit 2H, Original Wellpath, As Drilled V0
	Baker Unit 2H, Original Wellpath, Plan 5 Revised V0
	As Drilled

DESIGN TARGET DETAILS							
Name	TVD	+N/-S	+E/-W	Northing	Easting	Latitude	Longitude
SHL Baker Unit 2H	0.0	0.0	0.0	14238366.57	1745428.00	39° 12' 33.562 N	80° 37' 45.402 W
Actual BHL Baker Unit 2H	7437.0	9463.3	-3848.6	142427829.83	1741579.41	39° 14' 7.284 N	80° 38' 33.839 W



Received
 Office of Oil & Gas
 JAN 13 2016



Antero Resources

Doddridge County WV
Trent Pad: Bowen/Cox/Life/Baker/Nestor
Baker Unit 2H
Original Wellpath

Design: As Drilled

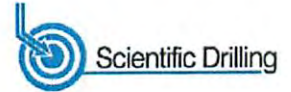
EOW Completion Report

26 September, 2014

Received
Office of Oil & Gas
JAN 13 2016



02/05/2016



Company:	Antero Resources	Local Co-ordinate Reference:	Well Baker Unit 2H
Project:	Doddridge County WV	TVD Reference:	HALL: 1407 GL + 13 Kb @ 1420.0usft
Site:	Trent Pad: Bowen/Cox/Life/Baker/Nestor	MD Reference:	HALL: 1407 GL + 13 Kb @ 1420.0usft
Well:	Baker Unit 2H	North Reference:	Grid
Wellbore:	Original Wellpath	Survey Calculation Method:	Minimum Curvature
Design:	As Drilled	Database:	Oklahoma District

Project	Doddridge County WV, McClellan District		
Map System:	Universal Transverse Mercator (US Survey Fee	System Datum:	Mean Sea Level
Geo Datum:	NAD 1927 (NADCON CONUS)		
Map Zone:	Zone 17N (84 W to 78 W)		

Site	Trent Pad: Bowen/Cox/Life/Baker/Nestor				
Site Position:		Northing:	14,238,330.29 usft	Latitude:	39° 12' 33.204 N
From:	Map	Easting:	1,745,410.61 usft	Longitude:	80° 37' 45.625 W
Position Uncertainty:	0.0 usft	Slot Radius:	13-3/16"	Grid Convergence:	0.23 °

Well	Baker Unit 2H, Marcellus					
Well Position	+N/-S	0.0 usft	Northing:	14,238,366.57 usft	Latitude:	39° 12' 33.562 N
	+E/-W	0.0 usft	Easting:	1,745,428.00 usft	Longitude:	80° 37' 45.402 W
Position Uncertainty	2.0 usft		Wellhead Elevation:	1,427.0 usft	Ground Level:	1,408.0 usft

Wellbore	Original Wellpath				
-----------------	-------------------	--	--	--	--

Magnetics	Model Name	Sample Date	Declination (°)	Dip Angle (°)	Field Strength (nT)
	IGRF2010	3/20/2014	-8.55	66.75	52,263

Design	As Drilled				
---------------	------------	--	--	--	--

Audit Notes:					
Version:	1.0	Phase:	ACTUAL	Tie On Depth:	0.0

Vertical Section:	Depth From (TVD) (usft)	+N/-S (usft)	+E/-W (usft)	Direction (°)
	0.0	0.0	0.0	342.20

Survey Program	Date	9/26/2014			
From (usft)	To (usft)	Survey (Wellbore)	Tool Name	Description	
100.0	352.0	Survey #2 Gyro SS (Original Wellpath)	SDI Standard Keeper	Scientific Drilling Intl. Standard Wireline Keeper	
400.0	2,510.0	Survey #4 Def Gyro to Int (Original Wellpa	SDI Standard Keeper	Scientific Drilling Intl. Standard Wireline Keeper	
2,525.0	6,645.7	Survey #6 Def Gyro to KOP (Original Well	SDI Standard Keeper	Scientific Drilling Intl. Standard Wireline Keeper	
6,652.8	17,888.0	Survey #8 MWD (Original Wellpath)	MWD SDI	MWD - Standard ver 1.0.1	

Survey	MD (usft)	Inc (°)	Azi (azimuth) (°)	TVD (usft)	N/S (usft)	E/W (usft)	V. Sec (usft)	DLeg (°/100usft)
	0.0	0.00	0.00	0.0	0.0	0.0	0.0	0.00
	100.0	0.22	22.24	100.0	0.2	0.1	0.1	0.22
	150.0	0.19	61.22	150.0	0.3	0.2	0.2	0.28
	200.0	0.25	114.67	200.0	0.3	0.4	0.2	0.41
	250.0	0.12	263.84	250.0	0.2	0.4	0.1	0.72
	300.0	0.11	10.83	300.0	0.3	0.4	0.2	0.37
	352.0	0.12	230.11	352.0	0.3	0.3	0.2	0.42
	400.0	0.31	131.11	400.0	0.2	0.4	0.1	0.73
	425.0	0.25	131.29	425.0	0.1	0.5	0.0	0.24

Received
Office of Oil & Gas
JAN 13 2016



EOW Completion Report



Company:	Antero Resources	Local Co-ordinate Reference:	Well Baker Unit 2H
Project:	Doddridge County WV	TVD Reference:	HALL: 1407 GL + 13 Kb @ 1420.0usft
Site:	Trent Pad: Bowen/Cox/Life/Baker/Nestor	MD Reference:	HALL: 1407 GL + 13 Kb @ 1420.0usft
Well:	Baker Unit 2H	North Reference:	Grid
Wellbore:	Original Wellpath	Survey Calculation Method:	Minimum Curvature
Design:	As Drilled	Database:	Oklahoma District

Survey									
MD (usft)	Inc (°)	Azi (azimuth) (°)	TVD (usft)	N/S (usft)	E/W (usft)	V. Sec (usft)	DLeg (°/100usft)		
450.0	0.25	124.73	450.0	0.0	0.6	-0.1	0.11		
475.0	0.15	139.60	475.0	0.0	0.6	-0.2	0.45		
500.0	0.27	140.35	500.0	-0.1	0.7	-0.3	0.48		
525.0	0.35	144.99	525.0	-0.2	0.8	-0.4	0.34		
550.0	0.34	139.10	550.0	-0.3	0.9	-0.6	0.15		
575.0	0.33	144.77	575.0	-0.4	1.0	-0.7	0.14		
600.0	0.33	152.65	600.0	-0.6	1.0	-0.8	0.18		
625.0	0.45	140.78	625.0	-0.7	1.1	-1.0	0.58		
650.0	0.41	151.02	650.0	-0.8	1.2	-1.2	0.35		
675.0	0.28	156.87	675.0	-1.0	1.3	-1.3	0.54		
700.0	0.36	153.50	700.0	-1.1	1.4	-1.5	0.33		
725.0	0.34	161.62	725.0	-1.2	1.4	-1.6	0.21		
750.0	0.32	154.47	750.0	-1.4	1.5	-1.8	0.18		
775.0	0.32	165.94	775.0	-1.5	1.5	-1.9	0.26		
800.0	0.26	165.38	800.0	-1.6	1.5	-2.0	0.24		
825.0	0.35	175.09	825.0	-1.8	1.6	-2.2	0.41		
850.0	0.28	182.12	850.0	-1.9	1.6	-2.3	0.32		
875.0	0.30	181.77	875.0	-2.0	1.6	-2.4	0.08		
900.0	0.32	181.18	900.0	-2.2	1.6	-2.5	0.08		
925.0	0.35	192.73	925.0	-2.3	1.5	-2.7	0.29		
950.0	0.43	190.01	950.0	-2.5	1.5	-2.8	0.33		
975.0	0.41	184.54	975.0	-2.7	1.5	-3.0	0.18		
1,000.0	0.39	184.44	1,000.0	-2.8	1.5	-3.1	0.08		
1,025.0	0.47	181.85	1,025.0	-3.0	1.5	-3.3	0.33		
1,050.0	0.42	183.02	1,050.0	-3.2	1.5	-3.5	0.20		
1,075.0	0.40	190.12	1,075.0	-3.4	1.4	-3.7	0.22		
1,100.0	0.39	190.48	1,100.0	-3.6	1.4	-3.8	0.04		
1,125.0	0.34	196.68	1,125.0	-3.7	1.4	-4.0	0.25		
1,150.0	0.36	180.04	1,150.0	-3.9	1.3	-4.1	0.41		
1,175.0	0.38	170.60	1,175.0	-4.0	1.4	-4.2	0.26		
1,200.0	0.42	170.13	1,200.0	-4.2	1.4	-4.4	0.16		
1,225.0	0.36	165.70	1,225.0	-4.4	1.4	-4.6	0.27		
1,250.0	0.24	164.80	1,250.0	-4.5	1.5	-4.7	0.48		
1,275.0	0.21	179.94	1,275.0	-4.6	1.5	-4.8	0.27		
1,300.0	0.24	193.30	1,300.0	-4.7	1.5	-4.9	0.24		
1,325.0	0.17	188.13	1,325.0	-4.8	1.4	-5.0	0.29		
1,350.0	0.24	173.48	1,350.0	-4.9	1.4	-5.1	0.35		
1,375.0	0.24	187.64	1,375.0	-5.0	1.4	-5.2	0.24		
1,400.0	0.27	180.73	1,400.0	-5.1	1.4	-5.3	0.17		
1,425.0	0.22	193.12	1,425.0	-5.2	1.4	-5.4	0.29		
1,450.0	0.21	187.71	1,450.0	-5.3	1.4	-5.4	0.09		
1,475.0	0.30	179.91	1,475.0	-5.4	1.4	-5.5	0.39		
1,500.0	0.23	179.01	1,500.0	-5.5	1.4	-5.7	0.28		
1,525.0	0.17	210.94	1,525.0	-5.6	1.4	-5.7	0.50		

Received
Office of Oil & Gas
JAN 3 2016



Company:	Antero Resources	Local Co-ordinate Reference:	Well Baker Unit 2H
Project:	Doddridge County WV	TVD Reference:	HALL: 1407 GL + 13 Kb @ 1420.0usft
Site:	Trent Pad: Bowen/Cox/Life/Baker/Nestor	MD Reference:	HALL: 1407 GL + 13 Kb @ 1420.0usft
Well:	Baker Unit 2H	North Reference:	Grid
Wellbore:	Original Wellpath	Survey Calculation Method:	Minimum Curvature
Design:	As Drilled	Database:	Oklahoma District

Survey									
MD (usft)	Inc (°)	Azi (azimuth) (°)	TVD (usft)	N/S (usft)	E/W (usft)	V. Sec (usft)	DLeg (°/100usft)		
1,550.0	0.22	206.51	1,550.0	-5.7	1.3	-5.8	0.21		
1,575.0	0.19	190.65	1,575.0	-5.7	1.3	-5.9	0.26		
1,600.0	0.09	258.88	1,600.0	-5.8	1.3	-5.9	0.71		
1,625.0	0.25	331.82	1,625.0	-5.7	1.2	-5.8	0.96		
1,650.0	1.25	341.57	1,650.0	-5.4	1.1	-5.5	4.02		
1,675.0	2.22	341.53	1,675.0	-4.7	0.9	-4.8	3.88		
1,700.0	3.17	339.72	1,699.9	-3.6	0.5	-3.6	3.81		
1,725.0	3.64	339.15	1,724.9	-2.2	0.0	-2.1	1.88		
1,750.0	3.70	339.71	1,749.8	-0.7	-0.6	-0.5	0.28		
1,775.0	4.25	340.64	1,774.8	0.9	-1.2	1.2	2.21		
1,800.0	5.04	343.83	1,799.7	2.8	-1.8	3.3	3.32		
1,825.0	5.61	347.69	1,824.6	5.1	-2.4	5.6	2.69		
1,850.0	5.70	348.48	1,849.5	7.5	-2.9	8.0	0.48		
1,875.0	5.96	347.94	1,874.3	10.0	-3.4	10.5	1.06		
1,900.0	6.02	348.23	1,899.2	12.5	-3.9	13.1	0.27		
1,925.0	6.26	348.54	1,924.1	15.2	-4.5	15.8	0.97		
1,950.0	6.30	349.76	1,948.9	17.8	-5.0	18.5	0.56		
1,975.0	6.30	349.01	1,973.8	20.5	-5.5	21.2	0.33		
2,000.0	6.34	349.19	1,998.6	23.2	-6.0	24.0	0.18		
2,025.0	6.31	348.99	2,023.5	25.9	-6.5	26.7	0.15		
2,050.0	6.26	348.54	2,048.3	28.6	-7.1	29.4	0.28		
2,075.0	6.34	348.87	2,073.2	31.3	-7.6	32.1	0.35		
2,100.0	6.29	348.62	2,098.0	34.0	-8.1	34.9	0.23		
2,125.0	6.32	348.14	2,122.9	36.7	-8.7	37.6	0.24		
2,150.0	6.29	348.73	2,147.7	39.4	-9.2	40.3	0.29		
2,175.0	6.21	348.82	2,172.6	42.1	-9.8	43.0	0.32		
2,200.0	5.20	350.69	2,197.4	44.5	-10.2	45.5	4.11		
2,225.0	4.41	353.75	2,222.3	46.6	-10.5	47.6	3.32		
2,250.0	4.14	353.36	2,247.3	48.4	-10.7	49.4	1.09		
2,275.0	3.72	356.41	2,272.2	50.1	-10.9	51.1	1.88		
2,300.0	3.53	355.94	2,297.2	51.7	-11.0	52.6	0.77		
2,325.0	2.97	354.90	2,322.1	53.1	-11.1	54.0	2.25		
2,350.0	2.71	355.07	2,347.1	54.4	-11.2	55.2	1.04		
2,375.0	2.28	358.30	2,372.1	55.5	-11.3	56.2	1.81		
2,400.0	2.01	358.37	2,397.0	56.4	-11.3	57.1	1.08		
2,425.0	1.93	359.90	2,422.0	57.2	-11.3	58.0	0.38		
2,450.0	1.65	351.91	2,447.0	58.0	-11.3	58.7	1.50		
2,475.0	1.41	354.28	2,472.0	58.7	-11.4	59.4	0.99		
2,500.0	1.30	2.51	2,497.0	59.3	-11.4	59.9	0.89		
2,510.0	1.28	349.28	2,507.0	59.5	-11.5	60.2	2.98		
2,525.0	1.43	356.60	2,522.0	59.9	-11.5	60.5	1.53		
2,550.0	1.09	354.74	2,547.0	60.4	-11.5	61.0	1.37		
2,575.0	0.94	353.47	2,572.0	60.8	-11.6	61.5	0.61		
2,600.0	0.83	348.65	2,597.0	61.2	-11.6	61.9	0.53		

Received
Office of Oil & Gas
JAN 13 2016



EOW Completion Report



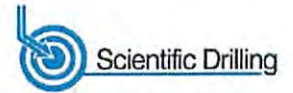
Company:	Antero Resources	Local Co-ordinate Reference:	Well Baker Unit 2H
Project:	Doddridge County WV	TVD Reference:	HALL: 1407 GL + 13 Kb @ 1420.0usft
Site:	Trent Pad: Bowen/Cox/Life/Baker/Nestor	MD Reference:	HALL: 1407 GL + 13 Kb @ 1420.0usft
Well:	Baker Unit 2H	North Reference:	Grid
Wellbore:	Original Wellpath	Survey Calculation Method:	Minimum Curvature
Design:	As Drilled	Database:	Oklahoma District

Survey									
MD (usft)	Inc (°)	Azi (azimuth) (°)	TVD (usft)	N/S (usft)	E/W (usft)	V. Sec (usft)	DLeg (°/100usft)		
2,625.0	0.81	348.78	2,622.0	61.6	-11.7	62.2	0.08		
2,650.0	0.78	349.50	2,647.0	61.9	-11.8	62.6	0.13		
2,675.0	0.72	355.69	2,672.0	62.2	-11.8	62.9	0.40		
2,700.0	0.74	344.19	2,697.0	62.6	-11.9	63.2	0.59		
2,725.0	0.67	344.57	2,722.0	62.8	-12.0	63.5	0.28		
2,750.0	0.67	345.81	2,747.0	63.1	-12.0	63.8	0.06		
2,775.0	0.68	347.46	2,772.0	63.4	-12.1	64.1	0.09		
2,800.0	0.61	351.80	2,797.0	63.7	-12.2	64.4	0.34		
2,825.0	0.60	351.45	2,822.0	64.0	-12.2	64.6	0.04		
2,850.0	0.61	348.08	2,847.0	64.2	-12.2	64.9	0.15		
2,875.0	0.55	355.42	2,872.0	64.5	-12.3	65.1	0.38		
2,900.0	0.50	3.38	2,897.0	64.7	-12.3	65.3	0.35		
2,925.0	0.43	5.04	2,922.0	64.9	-12.3	65.5	0.29		
2,950.0	0.53	1.01	2,947.0	65.1	-12.3	65.7	0.42		
2,975.0	0.46	1.64	2,972.0	65.3	-12.3	65.9	0.28		
3,000.0	0.47	8.49	2,997.0	65.5	-12.2	66.1	0.23		
3,025.0	0.45	0.93	3,022.0	65.7	-12.2	66.3	0.26		
3,050.0	0.46	3.19	3,047.0	65.9	-12.2	66.5	0.08		
3,075.0	0.44	2.00	3,072.0	66.1	-12.2	66.7	0.09		
3,100.0	0.40	2.58	3,097.0	66.3	-12.2	66.9	0.16		
3,125.0	0.40	5.06	3,122.0	66.5	-12.2	67.0	0.07		
3,150.0	0.39	15.41	3,147.0	66.6	-12.2	67.2	0.29		
3,175.0	0.37	2.28	3,172.0	66.8	-12.1	67.3	0.36		
3,200.0	0.32	9.56	3,197.0	67.0	-12.1	67.4	0.27		
3,225.0	0.39	5.24	3,222.0	67.1	-12.1	67.6	0.30		
3,250.0	0.37	5.14	3,247.0	67.3	-12.1	67.7	0.08		
3,275.0	0.33	16.55	3,272.0	67.4	-12.0	67.9	0.32		
3,300.0	0.29	13.31	3,297.0	67.6	-12.0	68.0	0.17		
3,325.0	0.32	353.12	3,322.0	67.7	-12.0	68.1	0.44		
3,350.0	0.32	350.65	3,347.0	67.8	-12.0	68.3	0.06		
3,375.0	0.31	358.81	3,372.0	68.0	-12.0	68.4	0.18		
3,400.0	0.32	354.34	3,397.0	68.1	-12.0	68.5	0.11		
3,425.0	0.33	348.45	3,422.0	68.2	-12.1	68.7	0.14		
3,450.0	0.31	352.60	3,447.0	68.4	-12.1	68.8	0.12		
3,475.0	0.24	1.76	3,472.0	68.5	-12.1	68.9	0.33		
3,500.0	0.25	10.26	3,497.0	68.6	-12.1	69.0	0.15		
3,525.0	0.25	6.95	3,522.0	68.7	-12.1	69.1	0.06		
3,550.0	0.23	5.26	3,547.0	68.8	-12.1	69.2	0.08		
3,575.0	0.20	0.42	3,572.0	68.9	-12.1	69.3	0.14		
3,600.0	0.22	17.41	3,597.0	69.0	-12.0	69.4	0.26		
3,625.0	0.18	14.94	3,622.0	69.1	-12.0	69.4	0.16		
3,650.0	0.22	21.59	3,647.0	69.2	-12.0	69.5	0.18		
3,675.0	0.14	41.95	3,672.0	69.2	-12.0	69.6	0.40		
3,700.0	0.12	27.17	3,697.0	69.3	-11.9	69.6	0.16		

Received
Office of Oil & Gas
JAN 13 2016



EOW Completion Report



Company:	Antero Resources	Local Co-ordinate Reference:	Well Baker Unit 2H
Project:	Doddridge County WV	TVD Reference:	HALL: 1407 GL + 13 Kb @ 1420.0usft
Site:	Trent Pad: Bowen/Cox/Life/Baker/Nestor	MD Reference:	HALL: 1407 GL + 13 Kb @ 1420.0usft
Well:	Baker Unit 2H	North Reference:	Grid
Wellbore:	Original Wellpath	Survey Calculation Method:	Minimum Curvature
Design:	As Drilled	Database:	Oklahoma District

Survey									
MD (usft)	Inc (°)	Azi (azimuth) (°)	TVD (usft)	N/S (usft)	E/W (usft)	V. Sec (usft)	DLeg (°/100usft)		
3,725.0	0.11	40.17	3,722.0	69.3	-11.9	69.6	0.11		
3,750.0	0.01	15.52	3,747.0	69.3	-11.9	69.6	0.40		
3,775.0	0.02	30.45	3,772.0	69.3	-11.9	69.6	0.04		
3,800.0	0.02	19.42	3,797.0	69.3	-11.9	69.7	0.02		
3,825.0	0.03	352.70	3,822.0	69.4	-11.9	69.7	0.06		
3,850.0	0.02	29.11	3,847.0	69.4	-11.9	69.7	0.07		
3,875.0	0.04	348.56	3,872.0	69.4	-11.9	69.7	0.11		
3,900.0	0.07	350.08	3,897.0	69.4	-11.9	69.7	0.12		
3,925.0	0.06	331.79	3,922.0	69.4	-11.9	69.7	0.09		
3,950.0	0.08	354.87	3,947.0	69.5	-11.9	69.8	0.14		
3,975.0	0.01	3.07	3,972.0	69.5	-11.9	69.8	0.28		
4,000.0	0.13	294.43	3,997.0	69.5	-11.9	69.8	0.51		
4,025.0	0.12	306.44	4,022.0	69.5	-12.0	69.8	0.11		
4,050.0	0.07	343.38	4,047.0	69.6	-12.0	69.9	0.31		
4,075.0	0.19	316.66	4,072.0	69.6	-12.0	69.9	0.53		
4,100.0	0.09	327.06	4,097.0	69.6	-12.1	70.0	0.41		
4,125.0	0.12	343.91	4,122.0	69.7	-12.1	70.0	0.17		
4,150.0	0.04	5.39	4,147.0	69.7	-12.1	70.1	0.34		
4,175.0	0.06	9.91	4,172.0	69.7	-12.1	70.1	0.08		
4,200.0	0.06	354.43	4,197.0	69.8	-12.1	70.1	0.06		
4,225.0	0.10	15.73	4,222.0	69.8	-12.1	70.1	0.20		
4,250.0	0.00	7.94	4,247.0	69.8	-12.1	70.2	0.40		
4,275.0	0.09	358.01	4,272.0	69.8	-12.1	70.2	0.36		
4,300.0	0.13	346.23	4,297.0	69.9	-12.1	70.2	0.18		
4,325.0	0.07	7.16	4,322.0	69.9	-12.1	70.3	0.28		
4,350.0	0.13	347.05	4,347.0	70.0	-12.1	70.3	0.27		
4,375.0	0.12	5.73	4,372.0	70.0	-12.1	70.4	0.17		
4,400.0	0.17	26.31	4,397.0	70.1	-12.1	70.4	0.29		
4,425.0	0.14	25.43	4,422.0	70.1	-12.0	70.5	0.12		
4,450.0	0.15	23.09	4,447.0	70.2	-12.0	70.5	0.05		
4,475.0	0.22	66.86	4,471.9	70.3	-12.0	70.5	0.61		
4,500.0	0.31	68.90	4,496.9	70.3	-11.9	70.6	0.36		
4,525.0	0.22	21.05	4,521.9	70.4	-11.8	70.6	0.92		
4,550.0	0.22	42.48	4,546.9	70.4	-11.7	70.7	0.33		
4,575.0	0.30	37.26	4,571.9	70.5	-11.6	70.7	0.38		
4,600.0	0.34	36.42	4,596.9	70.6	-11.6	70.8	0.16		
4,625.0	0.33	33.05	4,621.9	70.8	-11.5	70.9	0.09		
4,650.0	0.32	31.69	4,646.9	70.9	-11.4	71.0	0.05		
4,675.0	0.24	34.24	4,671.9	71.0	-11.3	71.1	0.32		
4,700.0	0.28	24.24	4,696.9	71.1	-11.3	71.1	0.24		
4,725.0	0.31	30.96	4,721.9	71.2	-11.2	71.2	0.18		
4,750.0	0.22	16.54	4,746.9	71.3	-11.2	71.3	0.45		
4,775.0	0.23	16.40	4,771.9	71.4	-11.1	71.4	0.04		
4,800.0	0.27	22.15	4,796.9	71.5	-11.1	71.5	0.19		

Received
Office of Oil & Gas
JAN 13 2016

Company:	Antero Resources	Local Co-ordinate Reference:	Well Baker Unit 2H
Project:	Doddridge County WV	TVD Reference:	HALL: 1407 GL + 13 Kb @ 1420.0usft
Site:	Trent Pad: Bowen/Cox/Life/Baker/Nestor	MD Reference:	HALL: 1407 GL + 13 Kb @ 1420.0usft
Well:	Baker Unit 2H	North Reference:	Grid
Wellbore:	Original Wellpath	Survey Calculation Method:	Minimum Curvature
Design:	As Drilled	Database:	Oklahoma District

Survey									
MD (usft)	Inc (°)	Azi (azimuth) (°)	TVD (usft)	N/S (usft)	E/W (usft)	V. Sec (usft)	DLeg (°/100usft)		
4,825.0	0.45	1.43	4,821.9	71.7	-11.1	71.6	0.88		
4,850.0	0.34	359.47	4,846.9	71.8	-11.1	71.8	0.44		
4,875.0	0.40	6.08	4,871.9	72.0	-11.1	71.9	0.29		
4,900.0	0.43	0.09	4,896.9	72.2	-11.1	72.1	0.21		
4,925.0	0.57	358.48	4,921.9	72.4	-11.1	72.3	0.56		
4,950.0	0.55	356.24	4,946.9	72.6	-11.1	72.5	0.12		
4,975.0	0.65	351.25	4,971.9	72.9	-11.1	72.8	0.45		
5,000.0	0.62	347.07	4,996.9	73.2	-11.2	73.1	0.22		
5,025.0	0.64	4.75	5,021.9	73.4	-11.2	73.3	0.78		
5,050.0	0.78	1.04	5,046.9	73.7	-11.2	73.6	0.59		
5,075.0	0.78	355.78	5,071.9	74.1	-11.2	74.0	0.29		
5,100.0	0.79	10.16	5,096.9	74.4	-11.2	74.3	0.79		
5,125.0	0.72	359.31	5,121.9	74.7	-11.1	74.6	0.64		
5,150.0	0.75	359.27	5,146.9	75.1	-11.1	74.9	0.12		
5,175.0	0.77	0.31	5,171.9	75.4	-11.1	75.2	0.10		
5,200.0	0.80	3.86	5,196.9	75.7	-11.1	75.5	0.23		
5,225.0	0.81	0.64	5,221.9	76.1	-11.1	75.8	0.19		
5,250.0	0.86	358.98	5,246.9	76.5	-11.1	76.2	0.22		
5,275.0	0.82	2.15	5,271.9	76.8	-11.1	76.5	0.25		
5,300.0	0.78	3.74	5,296.9	77.2	-11.1	76.9	0.18		
5,325.0	0.80	359.65	5,321.9	77.5	-11.1	77.2	0.24		
5,350.0	0.78	2.11	5,346.9	77.9	-11.1	77.5	0.16		
5,375.0	0.88	350.86	5,371.9	78.2	-11.1	77.9	0.76		
5,400.0	0.89	351.13	5,396.9	78.6	-11.2	78.3	0.04		
5,425.0	0.84	356.05	5,421.9	79.0	-11.2	78.6	0.36		
5,450.0	0.79	0.22	5,446.9	79.3	-11.2	79.0	0.31		
5,475.0	0.83	357.67	5,471.9	79.7	-11.2	79.3	0.22		
5,500.0	0.89	356.54	5,496.9	80.1	-11.2	79.7	0.25		
5,525.0	0.88	358.88	5,521.9	80.4	-11.3	80.0	0.15		
5,550.0	0.94	357.74	5,546.9	80.8	-11.3	80.4	0.25		
5,575.0	0.87	359.61	5,571.9	81.2	-11.3	80.8	0.30		
5,600.0	0.87	355.28	5,596.9	81.6	-11.3	81.2	0.26		
5,625.0	0.93	354.88	5,621.9	82.0	-11.3	81.5	0.24		
5,650.0	1.05	349.92	5,646.9	82.4	-11.4	82.0	0.59		
5,675.0	0.94	357.24	5,671.9	82.9	-11.4	82.4	0.67		
5,700.0	0.96	354.37	5,696.9	83.3	-11.5	82.8	0.21		
5,725.0	1.06	351.11	5,721.9	83.7	-11.5	83.2	0.46		
5,750.0	1.00	351.95	5,746.9	84.2	-11.6	83.7	0.25		
5,775.0	1.04	348.95	5,771.9	84.6	-11.7	84.1	0.27		
5,800.0	1.15	351.85	5,796.8	85.1	-11.7	84.6	0.49		
5,825.0	1.10	352.34	5,821.8	85.6	-11.8	85.1	0.20		
5,850.0	1.17	352.70	5,846.8	86.0	-11.9	85.6	0.28		
5,875.0	1.19	350.59	5,871.8	86.6	-11.9	86.1	0.19		
5,900.0	1.10	349.72	5,896.8	87.0	-12.0	86.6	0.37		
5,925.0	1.12	351.05	5,921.8	87.5	-12.1	87.0	0.13		

Company:	Antero Resources	Local Co-ordinate Reference:	Well Baker Unit 2H
Project:	Doddridge County WV	TVD Reference:	HALL: 1407 GL + 13 Kb @ 1420.0usft
Site:	Trent Pad: Bowen/Cox/Life/Baker/Nestor	MD Reference:	HALL: 1407 GL + 13 Kb @ 1420.0usft
Well:	Baker Unit 2H	North Reference:	Grid
Wellbore:	Original Wellpath	Survey Calculation Method:	Minimum Curvature
Design:	As Drilled	Database:	Oklahoma District

Survey									
MD (usft)	Inc (°)	Azi (azimuth) (°)	TVD (usft)	N/S (usft)	E/W (usft)	V. Sec (usft)	DLeg (°/100usft)		
5,950.0	1.18	350.51	5,946.8	88.0	-12.2	87.5	0.24		
5,975.0	1.13	358.00	5,971.8	88.5	-12.2	88.0	0.64		
6,000.0	1.05	1.72	5,996.8	89.0	-12.2	88.5	0.43		
6,025.0	1.02	1.15	6,021.8	89.4	-12.2	88.9	0.13		
6,050.0	1.03	4.26	6,046.8	89.9	-12.2	89.3	0.23		
6,075.0	1.13	356.67	6,071.8	90.4	-12.2	89.8	0.70		
6,100.0	1.00	2.48	6,096.8	90.8	-12.2	90.2	0.68		
6,125.0	1.04	2.75	6,121.8	91.3	-12.2	90.6	0.16		
6,150.0	1.01	9.37	6,146.8	91.7	-12.2	91.0	0.49		
6,175.0	0.96	4.35	6,171.8	92.1	-12.1	91.4	0.40		
6,200.0	1.01	5.02	6,196.8	92.6	-12.1	91.8	0.21		
6,225.0	0.91	9.57	6,221.8	93.0	-12.0	92.2	0.50		
6,250.0	0.87	10.72	6,246.8	93.4	-11.9	92.6	0.18		
6,275.0	0.84	7.59	6,271.8	93.7	-11.9	92.9	0.22		
6,300.0	0.87	12.40	6,296.8	94.1	-11.8	93.2	0.31		
6,325.0	0.77	9.76	6,321.8	94.5	-11.7	93.5	0.43		
6,350.0	0.69	24.95	6,346.8	94.8	-11.7	93.8	0.83		
6,375.0	0.75	30.59	6,371.8	95.0	-11.5	94.0	0.37		
6,400.0	0.66	15.32	6,396.8	95.3	-11.4	94.2	0.83		
6,425.0	0.67	21.42	6,421.8	95.6	-11.3	94.5	0.29		
6,450.0	0.61	23.89	6,446.8	95.8	-11.2	94.7	0.26		
6,475.0	0.52	23.81	6,471.8	96.1	-11.1	94.9	0.36		
6,500.0	0.43	20.04	6,496.8	96.3	-11.0	95.0	0.38		
6,525.0	0.53	32.31	6,521.8	96.5	-10.9	95.2	0.57		
6,550.0	0.58	13.35	6,546.7	96.7	-10.8	95.4	0.76		
6,575.0	0.52	8.44	6,571.7	96.9	-10.8	95.6	0.30		
6,600.0	0.65	58.35	6,596.7	97.1	-10.6	95.7	2.03		
6,625.0	0.63	20.31	6,621.7	97.3	-10.5	95.8	1.67		
6,645.7	0.66	32.60	6,642.5	97.5	-10.4	96.0	0.68		
6,652.8	0.66	32.60	6,649.5	97.6	-10.3	96.1	0.00		
6,678.0	0.34	290.62	6,674.7	97.7	-10.3	96.2	3.18		
6,723.0	4.69	235.52	6,719.7	96.7	-12.0	95.8	10.01		
6,768.0	10.41	235.77	6,764.3	93.4	-16.8	94.1	12.71		
6,813.0	15.86	232.86	6,808.1	87.4	-25.1	90.9	12.20		
6,858.0	21.76	231.78	6,850.7	78.5	-36.6	85.9	13.13		
6,903.0	27.57	230.25	6,891.5	66.7	-51.2	79.1	12.99		
6,948.0	33.08	228.39	6,930.4	51.9	-68.4	70.3	12.42		
6,981.0	37.07	227.69	6,957.4	39.2	-82.4	62.5	12.15		
Sycamore									
6,992.0	38.40	227.48	6,966.1	34.6	-87.4	59.7	12.15		
7,037.0	43.66	226.90	7,000.0	14.6	-109.1	47.2	11.72		
7,082.0	48.23	225.86	7,031.3	-7.8	-132.5	33.1	10.29		
7,127.0	53.35	225.46	7,059.7	-32.1	-157.4	17.5	11.40		
7,172.0	57.92	226.52	7,085.1	-57.9	-184.1	1.1	10.34		

Received
Office of Oil & Gas
JAN 13 2015

Company:	Antero Resources	Local Co-ordinate Reference:	Well Baker Unit 2H
Project:	Doddridge County WV	TVD Reference:	HALL: 1407 GL + 13 Kb @ 1420.0usft
Site:	Trent Pad: Bowen/Cox/Life/Baker/Nestor	MD Reference:	HALL: 1407 GL + 13 Kb @ 1420.0usft
Well:	Baker Unit 2H	North Reference:	Grid
Wellbore:	Original Wellpath	Survey Calculation Method:	Minimum Curvature
Design:	As Drilled	Database:	Oklahoma District

Survey									
MD (usft)	Inc (°)	Azi (azimuth) (°)	TVD (usft)	N/S (usft)	E/W (usft)	V. Sec (usft)	DLeg (°/100usft)		
7,217.0	60.15	229.88	7,108.3	-83.6	-212.9	-14.5	8.10		
7,255.0	61.71	236.08	7,126.8	-103.6	-239.4	-25.4	14.84		
Middlesex									
7,262.0	62.03	237.20	7,130.1	-107.0	-244.5	-27.1	14.84		
7,306.0	64.13	244.63	7,150.0	-126.0	-278.8	-34.7	15.79		
7,351.0	65.61	249.81	7,169.1	-141.8	-316.4	-38.3	10.93		
7,396.0	66.55	254.52	7,187.4	-154.4	-355.5	-38.3	9.79		
7,441.0	65.65	259.11	7,205.6	-163.7	-395.5	-35.0	9.54		
7,486.0	63.57	264.02	7,224.9	-169.7	-435.7	-28.4	10.89		
7,531.0	62.08	270.50	7,245.5	-171.6	-475.7	-18.0	13.23		
7,575.0	61.68	278.02	7,266.2	-168.8	-514.3	-3.5	15.10		
7,620.0	62.32	284.78	7,287.4	-160.9	-553.3	15.9	13.34		
7,660.0	62.72	289.56	7,305.9	-150.4	-587.1	36.2	10.66		
Tully									
7,665.0	62.78	290.16	7,308.1	-148.9	-591.3	39.0	10.66		
7,710.0	63.68	295.97	7,328.4	-133.2	-628.3	65.2	11.70		
7,755.0	65.93	302.32	7,347.6	-113.4	-663.8	95.0	13.71		
7,800.0	68.45	308.62	7,365.1	-89.3	-697.5	128.2	14.07		
7,844.0	69.47	313.74	7,380.9	-62.3	-728.4	163.4	11.10		
7,889.0	71.10	319.25	7,396.1	-31.5	-757.6	201.6	12.08		
7,934.0	72.28	324.54	7,410.2	2.1	-783.9	241.6	11.46		
7,979.0	75.27	329.30	7,422.8	38.3	-807.5	283.3	12.14		
7,986.0	76.03	330.02	7,424.5	44.1	-810.9	289.9	14.70		
Marcellus									
8,024.0	80.19	333.83	7,432.3	76.9	-828.4	326.5	14.70		
8,069.0	83.85	338.34	7,438.6	117.6	-846.4	370.8	12.83		
8,114.0	85.67	339.55	7,442.7	159.5	-862.5	415.5	4.85		
8,144.0	87.76	341.14	7,444.4	187.7	-872.6	445.4	8.75		
8,233.0	89.08	343.33	7,446.9	272.4	-899.8	534.4	2.87		
8,323.0	88.02	342.19	7,449.2	358.3	-926.4	624.4	1.73		
8,413.0	88.11	342.19	7,452.2	443.9	-953.9	714.3	0.10		
8,502.0	88.72	341.66	7,454.7	528.5	-981.5	803.3	0.91		
8,592.0	88.55	343.16	7,456.8	614.3	-1,008.7	893.2	1.68		
8,682.0	88.90	343.25	7,458.8	700.4	-1,034.7	983.2	0.40		
8,772.0	90.22	343.51	7,459.5	786.7	-1,060.5	1,073.2	1.49		
8,861.0	90.75	342.45	7,458.7	871.8	-1,086.5	1,162.2	1.33		
8,951.0	90.04	341.58	7,458.1	957.4	-1,114.3	1,252.2	1.25		
9,041.0	90.48	342.37	7,457.7	1,042.9	-1,142.1	1,342.2	1.00		
9,131.0	89.52	341.22	7,457.7	1,128.4	-1,170.3	1,432.2	1.66		
9,220.0	89.60	339.91	7,458.4	1,212.4	-1,199.9	1,521.1	1.47		
9,310.0	89.52	341.58	7,459.1	1,297.3	-1,229.6	1,611.1	1.86		
9,400.0	89.69	342.19	7,459.7	1,382.8	-1,257.5	1,701.1	0.70		
9,490.0	89.87	342.10	7,460.1	1,468.5	-1,285.1	1,791.1	0.22		
9,579.0	90.13	341.58	7,460.1	1,553.1	-1,312.9	1,880.1	0.65		
9,669.0	91.10	343.60	7,459.1	1,638.9	-1,339.8	1,970.1	2.49		

Company:	Antero Resources	Local Co-ordinate Reference:	Well Baker Unit 2H
Project:	Doddridge County WV	TVD Reference:	HALL: 1407 GL + 13 Kb @ 1420.0usft
Site:	Trent Pad: Bowen/Cox/Life/Baker/Nestor	MD Reference:	HALL: 1407 GL + 13 Kb @ 1420.0usft
Well:	Baker Unit 2H	North Reference:	Grid
Wellbore:	Original Wellpath	Survey Calculation Method:	Minimum Curvature
Design:	As Drilled	Database:	Oklahoma District

Survey								
MD (usft)	Inc (°)	Azi (azimuth) (°)	TVD (usft)	N/S (usft)	E/W (usft)	V. Sec (usft)	DLeg (°/100usft)	
9,758.0	91.10	345.44	7,457.4	1,724.7	-1,363.5	2,059.0	2.07	
9,848.0	91.80	344.92	7,455.1	1,811.7	-1,386.6	2,148.8	0.97	
9,938.0	91.98	342.81	7,452.1	1,898.1	-1,411.6	2,238.7	2.35	
10,027.0	91.80	343.07	7,449.2	1,983.1	-1,437.6	2,327.7	0.36	
10,117.0	91.80	341.14	7,446.4	2,068.7	-1,465.3	2,417.6	2.14	
10,207.0	91.45	340.17	7,443.8	2,153.6	-1,495.1	2,507.5	1.15	
10,296.0	91.36	340.35	7,441.6	2,237.3	-1,525.1	2,596.5	0.23	
10,386.0	90.92	340.78	7,439.8	2,322.2	-1,555.1	2,686.4	0.68	
10,475.0	90.66	340.96	7,438.6	2,406.3	-1,584.2	2,775.4	0.36	
10,565.0	90.40	340.35	7,437.8	2,491.2	-1,614.1	2,865.3	0.74	
10,655.0	90.31	342.63	7,437.2	2,576.5	-1,642.6	2,955.3	2.54	
10,744.0	90.13	342.10	7,436.9	2,661.3	-1,669.6	3,044.3	0.63	
10,834.0	89.08	343.86	7,437.5	2,747.4	-1,695.9	3,134.3	2.28	
10,924.0	89.34	342.89	7,438.7	2,833.6	-1,721.7	3,224.3	1.12	
11,013.0	89.34	343.33	7,439.8	2,918.8	-1,747.5	3,313.3	0.49	
11,103.0	89.16	342.37	7,440.9	3,004.8	-1,774.1	3,403.3	1.09	
11,193.0	90.40	342.28	7,441.3	3,090.5	-1,801.4	3,493.2	1.38	
11,283.0	90.48	342.10	7,440.6	3,176.2	-1,828.9	3,583.2	0.22	
11,377.0	89.52	342.28	7,440.6	3,265.7	-1,857.7	3,677.2	1.04	
11,471.0	89.34	343.51	7,441.5	3,355.5	-1,885.3	3,771.2	1.32	
11,565.0	90.57	341.93	7,441.6	3,445.3	-1,913.2	3,865.2	2.13	
11,660.0	90.40	339.38	7,440.8	3,534.9	-1,944.7	3,960.2	2.69	
11,754.0	90.84	339.99	7,439.8	3,623.1	-1,977.3	4,054.1	0.80	
11,849.0	90.57	341.40	7,438.6	3,712.7	-2,008.7	4,149.0	1.51	
11,943.0	90.57	344.21	7,437.7	3,802.5	-2,036.5	4,243.0	2.99	
12,037.0	91.71	344.12	7,435.8	3,892.9	-2,062.2	4,336.9	1.22	
12,131.0	91.28	344.21	7,433.4	3,983.3	-2,087.8	4,430.9	0.47	
12,226.0	91.91	344.47	7,430.7	4,074.7	-2,113.4	4,525.8	0.72	
12,321.0	90.57	344.56	7,428.7	4,166.3	-2,138.8	4,620.7	1.41	
12,415.0	89.78	342.72	7,428.4	4,256.5	-2,165.3	4,714.6	2.13	
12,504.0	89.69	342.54	7,428.8	4,341.4	-2,191.8	4,803.6	0.23	
12,594.0	89.60	342.72	7,429.3	4,427.3	-2,218.7	4,893.6	0.22	
12,684.0	90.66	342.54	7,429.1	4,513.2	-2,245.6	4,983.6	1.19	
12,774.0	90.31	343.69	7,428.4	4,599.3	-2,271.7	5,073.6	1.34	
12,863.0	89.96	341.49	7,428.2	4,684.2	-2,298.3	5,162.6	2.50	
12,953.0	89.87	341.49	7,428.3	4,769.6	-2,326.9	5,252.6	0.10	
13,043.0	89.87	341.58	7,428.5	4,854.9	-2,355.4	5,342.6	0.10	
13,132.0	90.13	342.10	7,428.5	4,939.5	-2,383.2	5,431.6	0.65	
13,222.0	90.40	342.28	7,428.1	5,025.2	-2,410.7	5,521.6	0.36	
13,312.0	90.57	342.63	7,427.3	5,111.0	-2,437.8	5,611.6	0.43	
13,402.0	90.48	341.75	7,426.5	5,196.7	-2,465.3	5,701.6	0.98	
13,491.0	90.48	340.96	7,425.8	5,281.0	-2,493.8	5,790.5	0.89	
13,581.0	90.66	340.35	7,424.9	5,365.9	-2,523.6	5,880.5	0.71	
13,671.0	89.34	338.94	7,424.9	5,450.3	-2,554.9	5,970.4	2.15	
13,760.0	89.96	341.49	7,425.4	5,534.0	-2,585.0	6,059.3	2.95	

Company:	Antero Resources	Local Co-ordinate Reference:	Well Baker Unit 2H
Project:	Doddridge County WV	TVD Reference:	HALL: 1407 GL + 13 Kb @ 1420.0usft
Site:	Trent Pad: Bowen/Cox/Life/Baker/Nestor	MD Reference:	HALL: 1407 GL + 13 Kb @ 1420.0usft
Well:	Baker Unit 2H	North Reference:	Grid
Wellbore:	Original Wellpath	Survey Calculation Method:	Minimum Curvature
Design:	As Drilled	Database:	Oklahoma District

Survey								
MD (usft)	Inc (°)	Azi (azimuth) (°)	TVD (usft)	N/S (usft)	E/W (usft)	V. Sec (usft)	DLeg (°/100usft)	
13,850.0	89.87	342.89	7,425.5	5,619.7	-2,612.6	6,149.3	1.56	
13,940.0	89.69	343.86	7,425.9	5,706.0	-2,638.3	6,239.3	1.10	
14,029.0	89.69	343.42	7,426.4	5,791.3	-2,663.4	6,328.3	0.49	
14,119.0	90.13	343.60	7,426.5	5,877.6	-2,688.9	6,418.3	0.53	
14,209.0	89.78	342.89	7,426.6	5,963.8	-2,714.9	6,508.3	0.88	
14,298.0	90.04	342.37	7,426.7	6,048.8	-2,741.4	6,597.3	0.65	
14,388.0	90.31	342.63	7,426.4	6,134.6	-2,768.5	6,687.2	0.42	
14,478.0	90.31	341.75	7,426.0	6,220.3	-2,796.0	6,777.2	0.98	
14,567.0	90.40	341.31	7,425.4	6,304.7	-2,824.2	6,866.2	0.50	
14,657.0	89.69	341.05	7,425.3	6,389.9	-2,853.3	6,956.2	0.84	
14,746.0	89.87	341.84	7,425.7	6,474.3	-2,881.6	7,045.2	0.91	
14,836.0	90.22	341.49	7,425.6	6,559.7	-2,909.9	7,135.2	0.55	
14,926.0	90.57	341.93	7,425.0	6,645.1	-2,938.1	7,225.2	0.62	
15,015.0	89.52	341.22	7,424.9	6,729.6	-2,966.3	7,314.2	1.42	
15,105.0	89.93	341.99	7,425.3	6,815.0	-2,994.7	7,404.2	0.97	
15,195.0	88.81	341.66	7,426.3	6,900.5	-3,022.7	7,494.2	1.30	
15,285.0	89.34	341.66	7,427.8	6,985.9	-3,051.1	7,584.2	0.59	
15,374.0	89.52	341.49	7,428.7	7,070.3	-3,079.2	7,673.2	0.28	
15,464.0	90.40	341.48	7,428.7	7,155.7	-3,107.8	7,763.1	0.98	
15,553.0	90.84	342.02	7,427.8	7,240.2	-3,135.6	7,852.1	0.78	
15,643.0	90.04	342.45	7,427.1	7,325.9	-3,163.1	7,942.1	1.01	
15,733.0	88.72	342.72	7,428.1	7,411.8	-3,190.0	8,032.1	1.50	
15,822.0	88.72	342.81	7,430.0	7,496.7	-3,216.4	8,121.1	0.10	
15,912.0	89.16	341.40	7,431.7	7,582.4	-3,244.0	8,211.1	1.64	
16,002.0	89.69	341.66	7,432.6	7,667.7	-3,272.5	8,301.1	0.66	
16,092.0	90.22	341.49	7,432.7	7,753.1	-3,301.0	8,391.1	0.62	
16,181.0	89.69	341.66	7,432.8	7,837.6	-3,329.1	8,480.1	0.63	
16,271.0	89.87	343.07	7,433.1	7,923.3	-3,356.4	8,570.1	1.58	
16,361.0	89.69	344.48	7,433.4	8,009.7	-3,381.5	8,660.0	1.58	
16,450.0	89.87	343.77	7,433.8	8,095.3	-3,405.9	8,749.0	0.82	
16,540.0	89.69	343.86	7,434.1	8,181.8	-3,431.0	8,838.9	0.22	
16,630.0	90.13	342.81	7,434.3	8,268.0	-3,456.8	8,928.9	1.26	
16,719.0	90.66	343.25	7,433.7	8,353.1	-3,482.7	9,017.9	0.77	
16,809.0	89.52	342.63	7,433.5	8,439.1	-3,509.2	9,107.9	1.44	
16,898.0	89.96	342.10	7,433.9	8,524.0	-3,536.1	9,196.9	0.77	
16,988.0	90.48	340.96	7,433.6	8,609.3	-3,564.6	9,286.9	0.89	
17,078.0	89.78	340.70	7,433.4	8,694.3	-3,594.2	9,376.9	0.83	
17,167.0	90.31	340.87	7,433.3	8,778.4	-3,623.5	9,465.8	0.63	
17,257.0	89.60	341.40	7,433.4	8,863.5	-3,652.6	9,555.8	0.98	
17,347.0	90.04	341.14	7,433.7	8,948.8	-3,681.5	9,645.8	0.57	
17,436.0	90.48	341.31	7,433.3	9,033.0	-3,710.1	9,734.8	0.53	
17,526.0	89.16	342.45	7,433.5	9,118.6	-3,738.1	9,824.8	1.94	
17,616.0	88.90	342.10	7,435.1	9,204.3	-3,765.5	9,914.8	0.48	
17,706.0	89.34	341.75	7,436.4	9,289.8	-3,793.4	10,004.8	0.62	

Received
Office of Oil & Gas
JAN 13 2016



Company: Antero Resources	Local Co-ordinate Reference: Well Baker Unit 2H
Project: Doddridge County WV	TVD Reference: HALL: 1407 GL + 13 Kb @ 1420.0usft
Site: Trent Pad: Bowen/Cox/Life/Baker/Nestor	MD Reference: HALL: 1407 GL + 13 Kb @ 1420.0usft
Well: Baker Unit 2H	North Reference: Grid
Wellbore: Original Wellpath	Survey Calculation Method: Minimum Curvature
Design: As Drilled	Database: Oklahoma District

MD (usft)	Inc (°)	Azi (azimuth) (°)	TVD (usft)	N/S (usft)	E/W (usft)	V. Sec (usft)	DLeg (°/100usft)
17,795.0	89.87	342.45	7,437.1	9,374.5	-3,820.8	10,093.7	0.99
17,829.0	90.04	342.63	7,437.1	9,407.0	-3,831.0	10,127.7	0.73
17,888.0	90.04	342.63	7,437.0	9,463.3	-3,848.6	10,186.7	0.00

Measured Depth (usft)	Vertical Depth (usft)	Local Coordinates		Comment
		+N/-S (usft)	+E/-W (usft)	
6,981.0	6,957.4	39.2	-82.4	Sycamore
7,255.0	7,126.8	-103.6	-239.4	Middlesex
7,660.0	7,305.9	-150.4	-587.1	Tully
7,986.0	7,424.5	44.1	-810.9	Marcellus

Checked By: _____ Approved By: _____ Date: _____

Received
Office of Oil & Gas
JAN 13 2016