

NOTES ON SURVEY

1. NO WATER WELLS WERE FOUND WITHIN 250' OF PROPOSED GAS WELL. NO AGRICULTURAL BUILDINGS ≥ 2500 SQ. FT. OR DWELLINGS WERE FOUND WITHIN 625' OF THE CENTER OF PROPOSED WELL PAD.

TOM DAVIES, ET AL 1457.95 ACRES±

EQT PRODUCTION COMPANY LEWIS MAXWELL LEASE 2,654 ACRES± WELL NO. WV 514395

(S.P.C. NORTH ZONE) (UTM(M) ZONE 17 NORTH) NAD'27 S.P.C.(FT) N. 277,569.6 E. 1,635,662.0 NAD'27 GEO. LAT-(N) 39.254930 LONG-(W) 80.786636 NAD'83 UTM (M) N. 4,344,982.8 E. 518,423.9

LANDING POINT

NAD'27 S.P.C.(FT) N. 277,183.8 E. 1,636,117.8 NAD'27 GEO. LAT-(N) 39.253888 LONG-(W) 80.785008 NAD'83 UTM (M) N. 4,344,982.8 E. 518,564.7

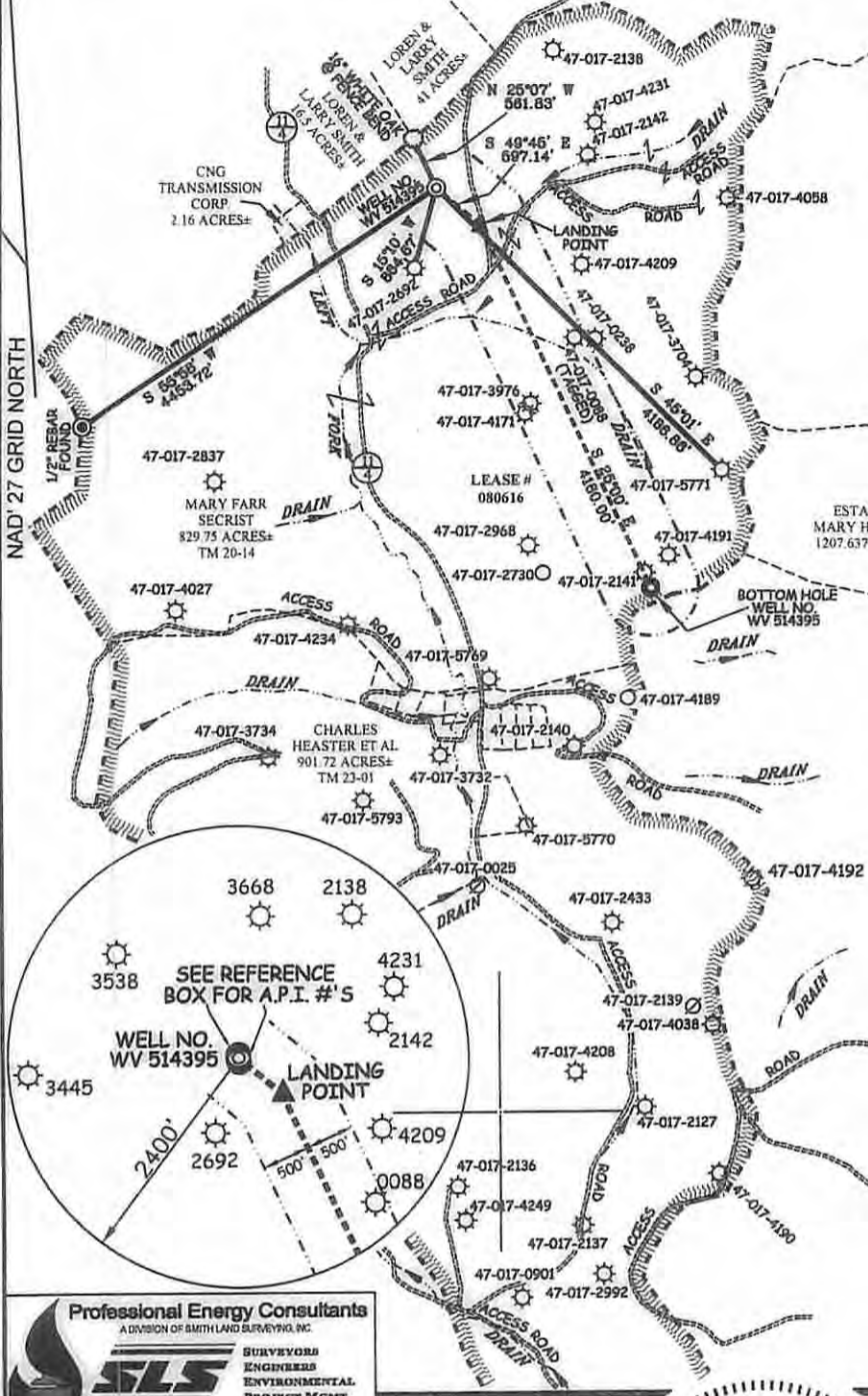
BOTTOM HOLE

NAD'27 S.P.C.(FT) N. 273,395.4 E. 1,637,884.3 NAD'27 GEO. LAT-(N) 39.243557 LONG-(W) 80.778580 NAD'83 UTM (M) N. 4,343,837.7 E. 519,122.2

NAD'27 GRID NORTH

LONGITUDE 80°45'00"

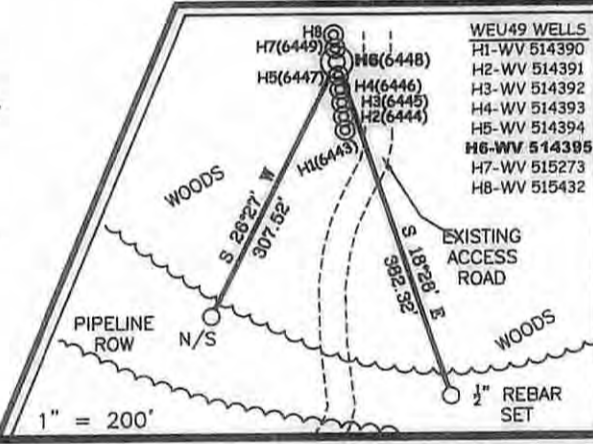
13,381'



LEGEND

Table with 2 columns: Symbol and Description. Includes Lease Line, Surface Line, Well Lateral, Offset Line, Tie Line, Creek, Road, Tree Line, County Route, Proposed Well, Existing Well, Tax Map-Parcel.

REFERENCES



Professional Energy Consultants logo and contact information: (304) 462-6634, www.slsurveyors.com

I THE UNDERSIGNED, HEREBY CERTIFY THAT THIS PLAN IS CORRECT TO THE BEST OF MY KNOWLEDGE AND BELIEF AND SHOWS ALL THE INFORMATION REQUIRED BY LAW AND THE REGULATIONS ISSUED AND PRESCRIBED BY THE DIVISION OF ENVIRONMENTAL PROTECTION.



P.S. 849 C. Victor Moyers

Form with fields for DATE (DECEMBER 02, 20 13), REVISED (07/01/14 & 07/31/14), OPERATORS WELL NO. (WV 514395), API WELL NO. (47-017-06448), STATE (47), COUNTY (017), PERMIT (MOD 06448).

Form with fields for MINIMUM DEGREE OF ACCURACY (1/200), FILE NO. (7871P514395R2), SCALE (1" = 2000'), HORIZONTAL & VERTICAL CONTROL DETERMINED BY (DGPS).

STATE OF WEST VIRGINIA DIVISION OF ENVIRONMENTAL PROTECTION OFFICE OF OIL AND GAS logo.

Form with fields for WELL TYPE (OIL, GAS, LIQUID INJECTION, WASTE DISPOSAL, IF "GAS" PRODUCTION, STORAGE, DEEP, SHALLOW), LOCATION (ELEVATION, WATERSHED, DISTRICT, COUNTY, QUADRANGLE), SURFACE OWNER (MARY FARR SECRIST), ROYALTY OWNER (LEWIS MAXWELL HRS), PROPOSED WORK (DRILL, CONVERT, DRILL DEEPER, REDRILL, FRACTURE OR STIMULATE, PLUG OFF OLD FORMATION, PERFORATE NEW FORMATION, PLUG AND ABANDON, CLEAN OUT AND REPLUG, OTHER), PHYSICAL CHANGE IN WELL (SPECIFY), TARGET FORMATION (MARCELLUS), ESTIMATED DEPTH (TVD 6,622').

Form with fields for WELL OPERATOR (EQT PRODUCTION COMPANY), ADDRESS (115 PROFESSIONAL PLACE, BRIDGEPORT, WV 26330), DESIGNATED AGENT (REX C. RAY), ADDRESS (115 PROFESSIONAL PLACE, BRIDGEPORT, WV 26330).

12/12/14

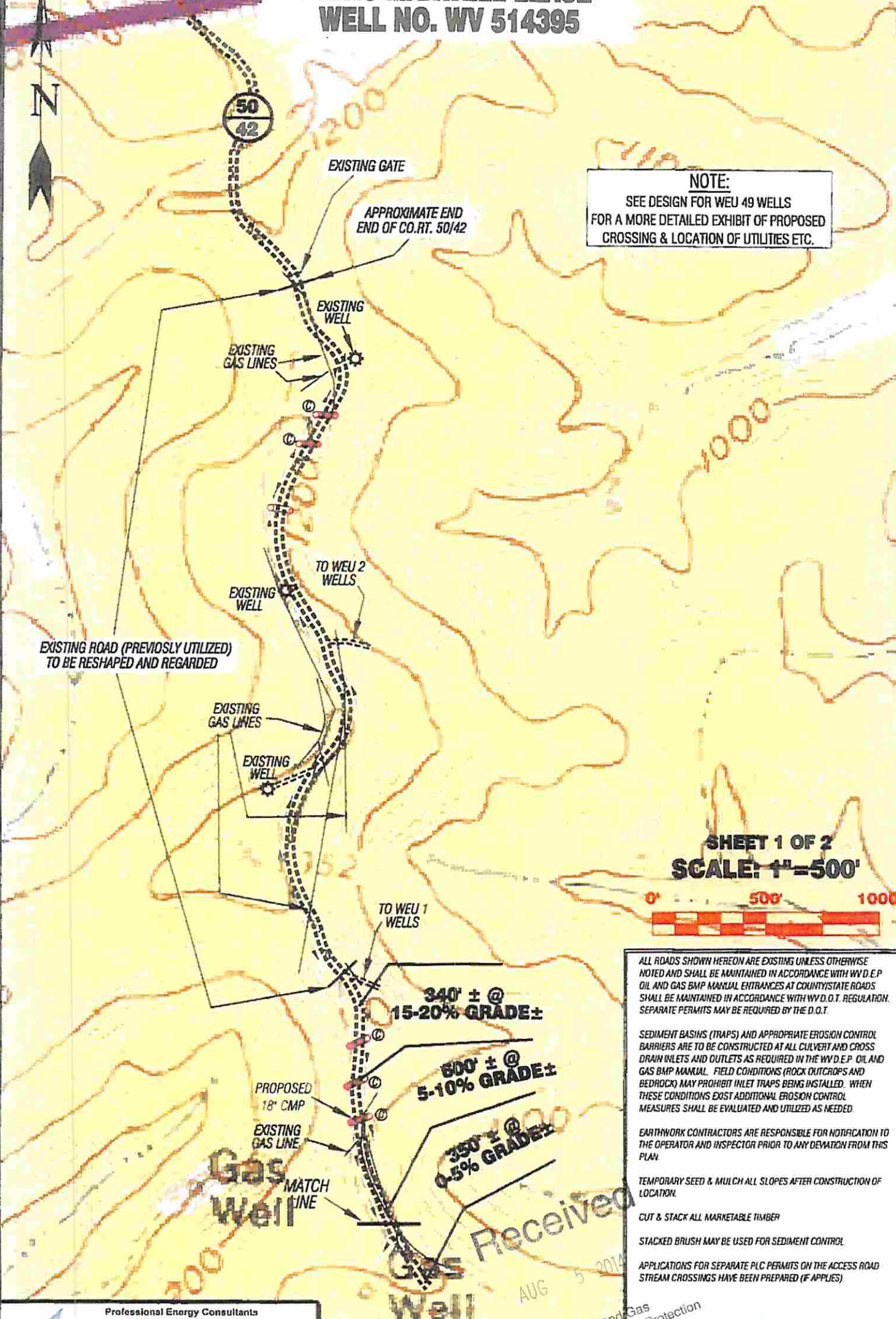
Received AUG 5 2014 WV Dept. of Environmental Protection

COUNTY NAME PERMIT

# EQT PRODUCTION COMPANY LEWIS MAXWELL LEASE WELL NO. WV 514395



**NOTE:**  
SEE DESIGN FOR WEU 49 WELLS  
FOR A MORE DETAILED EXHIBIT OF PROPOSED  
CROSSING & LOCATION OF UTILITIES ETC.



**SHEET 1 OF 2**  
**SCALE: 1"=500'**

ALL ROADS SHOWN HEREON ARE EXISTING UNLESS OTHERWISE NOTED AND SHALL BE MAINTAINED IN ACCORDANCE WITH WV D.E.P. OIL AND GAS BMP MANUAL ENTRANCES AT COUNTY/STATE ROADS SHALL BE MAINTAINED IN ACCORDANCE WITH WV D.O.T. REGULATION. SEPARATE PERMITS MAY BE REQUIRED BY THE D.O.T.

SEDIMENT BASINS (TRAPS) AND APPROPRIATE EROSION CONTROL BARRIERS ARE TO BE CONSTRUCTED AT ALL CULVERT AND CROSS DRAIN INLETS AND OUTLETS AS REQUIRED IN THE WV D.E.P. OIL AND GAS BMP MANUAL. FIELD CONDITIONS (ROCK OUTCROPS AND BEDROCK) MAY PROHIBIT INLET TRAPS BEING INSTALLED. WHEN THESE CONDITIONS EXIST ADDITIONAL EROSION CONTROL MEASURES SHALL BE EVALUATED AND UTILIZED AS NEEDED.

EARTHWORK CONTRACTORS ARE RESPONSIBLE FOR NOTIFICATION TO THE OPERATOR AND INSPECTOR PRIOR TO ANY DEVIATION FROM THIS PLAN.

TEMPORARY SEED & MULCH ALL SLOPES AFTER CONSTRUCTION OF LOCATION.

CUT & STACK ALL MARKETABLE TIMBER

STACKED BRUSH MAY BE USED FOR SEDIMENT CONTROL

APPLICATIONS FOR SEPARATE PLC PERMITS ON THE ACCESS ROAD STREAM CROSSINGS HAVE BEEN PREPARED (IF APPLIES)

Professional Energy Consultants  
A DIVISION OF SMITH LAND SURVEYING

SURVEYORS PROJECT MGMT. ENGINEERS ENVIRONMENTAL

235 Third Main St. P.O. Box 128 Glenwood, WV 26031 (304) 462-2812

20051 Dohrs Station Road Sandusky, OH 44877 (740) 871-9111

HONESTY. FREEDOM. QUALITY

DRAWN BY K.D.W.	FILE NO. 7871	DATE 12/04/13	CADD FILE: 7871RECS14395.dwg
--------------------	------------------	------------------	---------------------------------

TOPO SECTION OF WEST UNION 7.5' USGS TOPO QUADRANGLE

Office of Oil and Gas Protection  
WV Dept. of Environmental Protection

EXISTING CULVERT

PROPOSED CULVERT 15" MIN UNLESS OTHERWISE NOTED

PROPOSED STREAM CROSSING

APPROXIMATE LIMITS OF DISTURBANCE

Received  
AUG 5 2014