



CNX GAS COMPANY, LLC

Location: Doddridge Co., WV
Field: Doddridge
Facility: OXFD-11 Pad

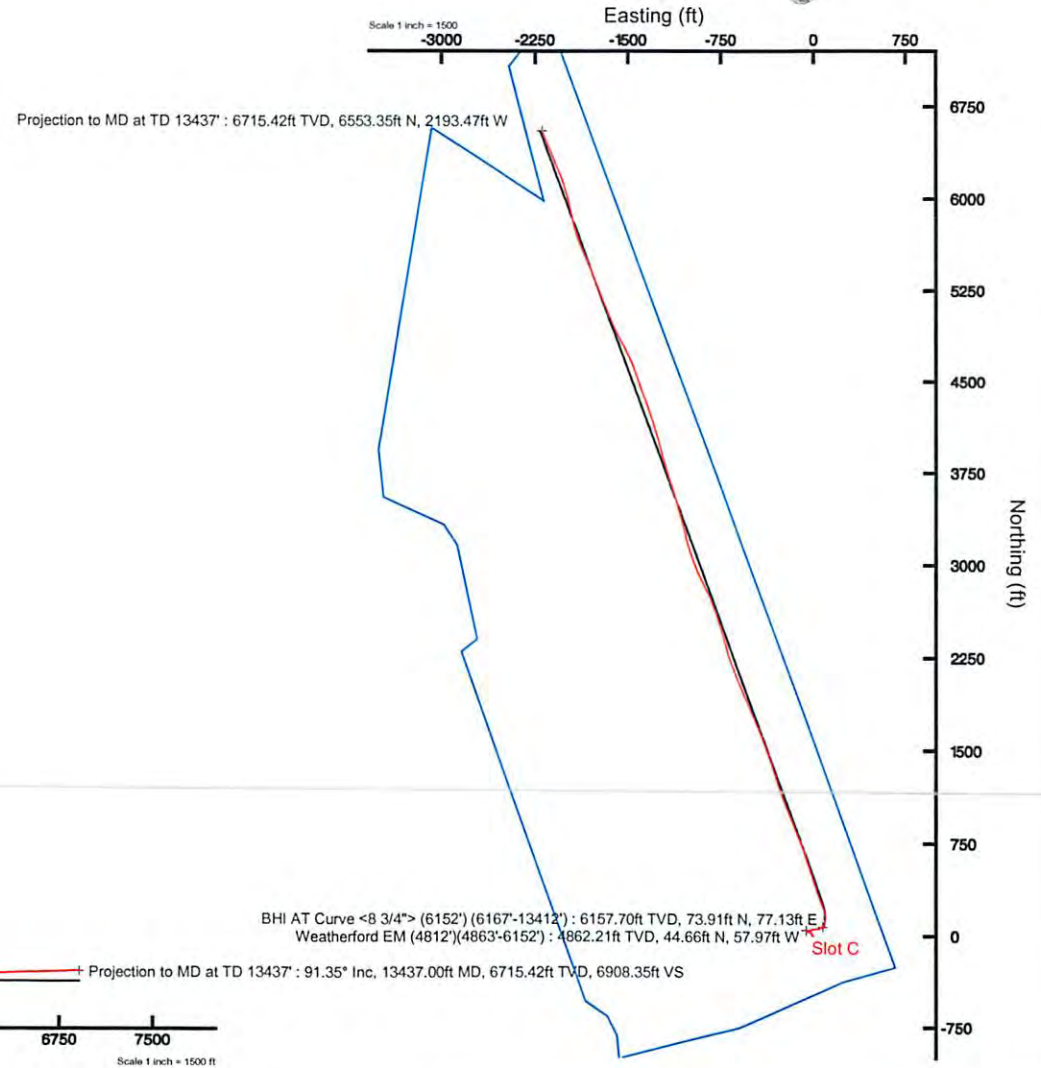
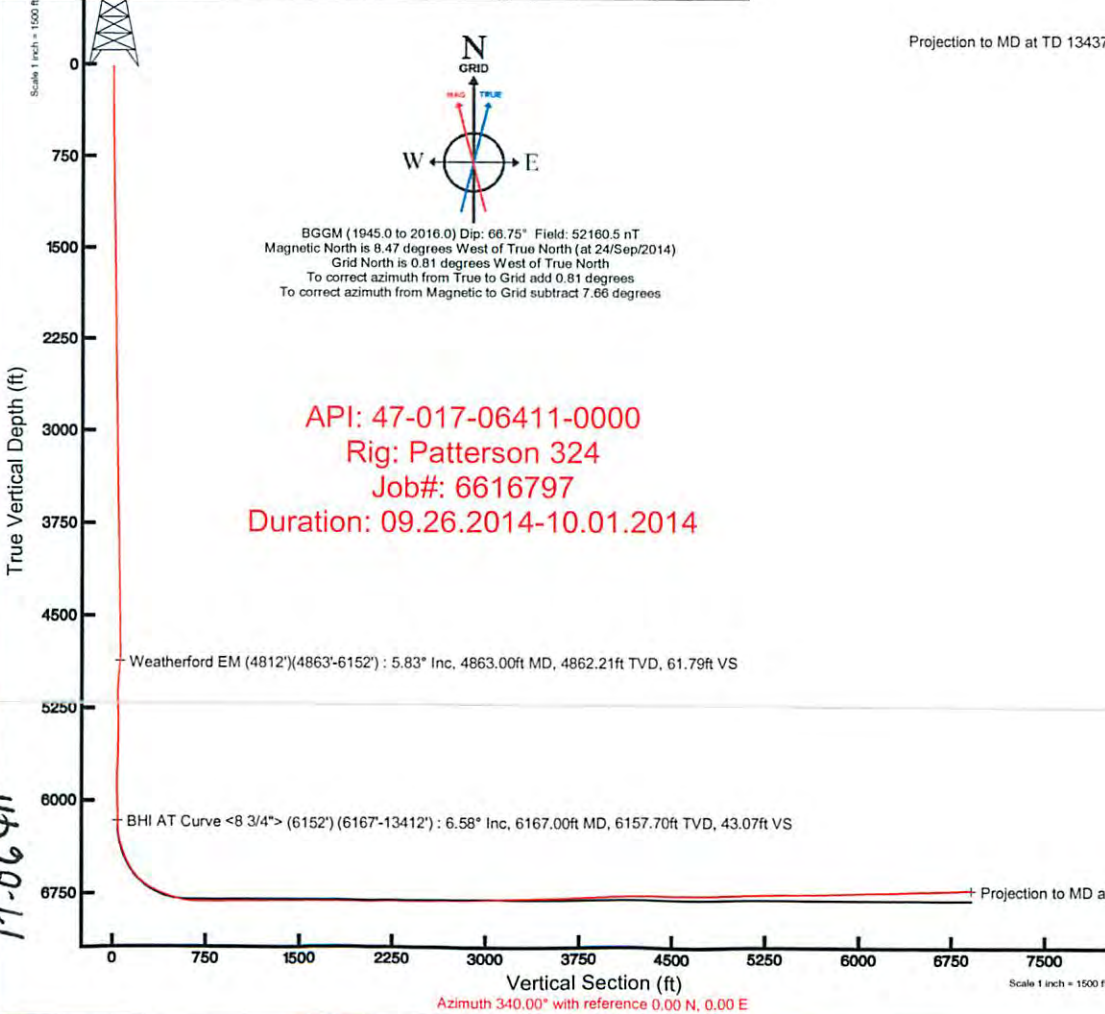
Slot: Slot C
Well: OXFD-11C-HS ST01
Wellbore: OXFD-11C-HS ST01 PWB



Plot reference wellpath is OXFD-11C-HS ST01 PWP Rev-B.0	
True vertical depths are referenced to Patterson 324 (RKB)	Grid System: NAD27 / Lambert West Virginia SP, Northern Zone (4701), US feet
Measured depths are referenced to Patterson 324 (RKB)	North Reference: Grid north
Patterson 324 (RKB) to Mean Sea Level: 1332.47 feet	Scale: True distance
Mean Sea Level to Mud line (At Slot: Slot C): -1307.97 feet	Depths are in feet
Coordinates are in feet referenced to Slot	Created by: hareluk on 01/Oct/2014

Well Data			
Slot	Well	Wellbore	Wellpath
Slot C	OXFD-11C-HS ST01	OXFD-11C-HS ST01 AWB	OXFD-11C-HS ST01 AWP Proj:13437'
Slot C	OXFD-11C-HS ST01	OXFD-11C-HS ST01 PWB	OXFD-11C-HS ST01 PWP Rev-B.0

Location Information					
Facility Name	Grid East (US ft)	Grid North (US ft)	Latitude	Longitude	
OXFD-11 Pad	1641688.000	246757.000	39°10'14.064"N	80°45'49.782"W	
Slot	Local N (ft)	Local E (ft)	Grid East (US ft)	Grid North (US ft)	Latitude
Slot C	39.00	27.00	1641715.000	246787.000	39°10'14.364"N
Patterson 324 (RKB) to Mud line (At Slot: Slot C)					24.5ft
Mean Sea Level to Mud line (At Slot: Slot C)					-1307.97ft
Patterson 324 (RKB) to Mean Sea Level					1332.47ft



RECEIVED Gas
 Office of Oil and Gas
 5/10/15
 Environmental
 WV

17-06-411

17.06411

ACTUAL WELLPATH REPORT (CSV version)

Prepared by Baker Hughes

Software System: WellArchitect® 4.0.1

REFERENCE WELLPATH IDENTIFICATION

Operator CNX GAS COMPANY, LLC
Area Doddridge Co., WV
Field Doddridge
Facility OXFD-11 Pad
Slot Slot C
Well OXFD-11C-HS ST01
Wellbore OXFD-11C-HS ST01 AWB
Wellpath OXFD-11C-HS ST01 AWP Proj:
Sidetrack OXFD-11C-HS ST01 AWB at 4812.00 MD

REPORT SETUP INFORMATION

Projection NAD27 / Lambert West Virginia SP, Northern Zone (4701), US feet
North Refe Grid
Scale 0.999972
Convergen 0.81° West
Software S WellArchitect® 4.0.1
User Genddow
Report Ger 10/1/2014 at 7:37:43 AM
DataBase/ WellArchitectDB/ev910.xml

Table with 6 columns: WELLPATH, Local North [ft], Local East [ft], Easting [US ft], Northing [US ft], Latitude, Longitude. Rows include Slot Locatic, Facility Ref, and Field Refer.

WELLPATH DATUM

Calculation Minimum curvature
Horizontal Slot
Vertical Re Patterson 324 (RKB)
MD Refere Patterson 324 (RKB)
Field Vertic Mean Sea Level
Patterson ± 1332.47ft
Patterson ± 1332.47ft
Patterson ± 24.50ft
Section Ori N 0.00, E 0.00 ft
Section Azi 340.00°

WELLPATH DATA † = interpolated/extrapolated station

Table with 9 columns: MD [ft], Inclination [°], Azimuth [°], TVD [ft], Vert Sect [ft], North [ft], East [ft], DLS [°/100ft]. Rows range from 0 to 2012.

RECEIVED
DLS Office of Oil and Gas
AUG 27 2015
WV Department of Environmental Protection

10/09/2015

17-06411

2112	0.3	320.36	2111.81	25.22	21.32	-15.15	0.38
2212	0.61	318.72	2211.81	25.96	21.92	-15.67	0.31
2312	0.46	319.37	2311.81	26.83	22.63	-16.28	0.15
2412	0.84	310.71	2411.8	27.85	23.41	-17.1	0.39
2512	0.77	305.55	2511.79	29.04	24.28	-18.2	0.1
2612	1	299.4	2611.78	30.26	25.1	-19.51	0.25
2712	1.07	294.74	2711.76	31.58	25.92	-21.11	0.11
2812	1.14	299.61	2811.74	32.99	26.8	-22.83	0.12
2912	0.98	294.29	2911.72	34.35	27.64	-24.47	0.19
3012	1.32	291.67	3011.7	35.71	28.42	-26.32	0.34
3112	1.19	292.27	3111.68	37.17	29.24	-28.35	0.13
3212	1.32	296.8	3211.66	38.71	30.15	-30.34	0.16
3312	1.37	295.08	3311.63	40.4	31.18	-32.45	0.06
3412	1.01	298.75	3411.61	41.91	32.11	-34.31	0.37
3512	1.26	295.68	3511.59	43.36	33.01	-36.07	0.26
3612	1.56	294.34	3611.56	45.09	34.05	-38.3	0.3
3712	1.33	298.5	3711.53	46.91	35.16	-40.56	0.25
3812	1.69	297.01	3811.49	48.86	36.39	-42.9	0.36
3912	1.15	298.68	3911.46	50.69	37.54	-45.09	0.54
4012	1.53	296.31	4011.43	52.41	38.61	-47.17	0.38
4112	1.41	301.4	4111.4	54.34	39.84	-49.41	0.18
4212	1.1	301.19	4211.37	56.05	40.98	-51.29	0.31
4312	1.31	299.03	4311.35	57.66	42.03	-53.11	0.21
4412	1.01	297.28	4411.33	59.17	42.99	-54.89	0.3
4512	0.79	296.57	4511.32	60.32	43.7	-56.29	0.22
4612	0.72	295.8	4611.31	61.27	44.29	-57.47	0.07
4712	0.85	294.23	4711.3	62.24	44.86	-58.71	0.13
4812	0.83	298.94	4811.29	63.3	45.52	-60.02	0.07
4863	5.83	113.67	4862.21	61.79	44.66	-57.97	13.05
4895	6.12	115	4894.04	59.46	43.28	-54.94	1
4927	6.29	114.68	4925.85	57.02	41.83	-51.8	0.54
4958	6.64	114.11	4956.66	54.58	40.39	-48.62	1.15
4990	6.68	115.54	4988.44	51.97	38.83	-45.25	0.53
5021	6.13	115.58	5019.25	49.5	37.34	-42.13	1.77
5053	5.38	113.96	5051.08	47.24	35.99	-39.22	2.4
5085	5.42	104.42	5082.94	45.34	35.01	-36.39	2.81
5116	5.46	93.8	5113.8	43.92	34.54	-33.5	3.25
5148	4.88	73.56	5145.68	43.22	34.83	-30.67	5.94
5179	4.79	53	5176.57	43.51	35.98	-28.37	6.51
5211	5.3	43.57	5208.44	44.56	37.86	-26.29	3.04
5243	6.02	45.24	5240.29	45.92	40.11	-24.08	2.31
5275	6.94	49.17	5272.08	47.31	42.55	-21.42	3.19
5306	7.48	58.32	5302.84	48.39	44.84	-18.29	4.09
5338	7.96	65.3	5334.55	48.99	46.86	-14.5	3.29
5401	8.12	73.42	5396.93	49.08	49.95	-6.27	1.82
5464	6.85	76.24	5459.4	48.41	52.11	1.64	2.1
5527	5.79	77.88	5522.01	47.57	53.67	8.4	1.71
5590	6.15	76.9	5584.67	46.72	55.11	14.79	0.59
5652	7.18	89.37	5646.25	45.04	55.9	21.9	2.86
5715	6.89	95.22	5708.78	42.12	55.6	29.6	1.23
5782	5.01	93.97	5775.42	39.22	55.03	36.52	2.81
5845	5.86	74.95	5838.14	37.83	55.68	42.37	3.14
5908	7.22	58.65	5900.73	38.33	58.57	48.86	3.63
5972	7.96	57.15	5964.17	40.11	63.07	56.02	1.2
6035	7.58	61.09	6026.59	41.72	67.44	63.32	1.04
6098	6.41	66.18	6089.12	42.6	70.87	70.17	2.1
6152	6.18	66.6	6142.8	42.97	73.24	75.6	0.43
6167	6.58	66.55	6157.7	43.07	73.91	77.13	2.67
6206	7.16	52.65	6196.43	43.93	76.27	81.11	4.5
6255	10.79	28.73	6244.83	47.87	82.15	85.75	10.48
6301	14.41	20.02	6289.72	55.1	91.31	89.78	8.87
6345	16.31	13.01	6332.15	64.47	102.47	93.04	6.03
6395	18.44	9.27	6379.87	77.26	117.12	95.9	4.81
6439	21.74	7.23	6421.19	90.58	132.08	98.04	7.67
6489	26.06	1.63	6466.9	109.03	152.25	99.52	9.75
6533	29.41	352.34	6505.85	128.59	172.64	98.36	12.41
6582	32.88	342.39	6547.81	153.65	197.26	92.72	12.65
6625	37.22	338.01	6583.01	178.33	220.46	84.32	11.66
6677	43.16	338.01	6622.72	211.85	251.56	71.76	11.42

RECEIVED
Office of Oil and Gas
AUG 27 2015
WV Department of
Environmental Protection

10/09/2015

17-06411

6719	48.1	338.63	6652.08	241.85	279.45	60.68	11.81
6771	53.99	340.04	6684.76	282.26	317.28	46.43	11.52
6814	58.87	340.66	6708.53	318.08	351.01	34.39	11.41
6865	63.7	341.34	6733.02	362.79	393.29	19.84	9.54
6908	67.42	341.77	6750.81	401.91	430.42	7.46	8.7
6960	69.86	341.78	6769.75	450.31	476.42	-7.68	4.69
7003	71.04	341.76	6784.14	490.82	514.9	-20.36	2.74
7055	76.37	341.95	6798.72	540.68	562.32	-35.9	10.26
7099	78.51	342.06	6808.29	583.6	603.16	-49.16	4.87
7150	84.33	341.79	6815.9	633.98	651.08	-64.8	11.42
7192	89.45	341.64	6818.17	675.89	690.89	-77.96	12.2
7244	89.88	338.53	6818.48	727.88	739.77	-95.67	6.04
7339	90.4	338.18	6818.25	822.84	828.07	-130.71	0.66
7434	90.46	339.18	6817.53	917.81	916.57	-165.25	1.05
7530	90.4	336.31	6816.81	1013.72	1005.4	-201.6	2.99
7625	90.34	340.19	6816.2	1108.66	1093.62	-236.8	4.08
7719	90.52	341.11	6815.49	1202.65	1182.31	-267.94	1
7815	90.49	342.55	6814.65	1298.59	1273.52	-297.88	1.5
7910	90.52	341.12	6813.81	1393.54	1363.78	-327.49	1.51
8005	90.43	341.29	6813.02	1488.51	1453.71	-358.1	0.2
8100	90.43	339.79	6812.31	1583.5	1543.27	-389.74	1.58
8194	90.25	338.26	6811.75	1677.49	1631.04	-423.39	1.64
8289	90.25	336.16	6811.34	1772.37	1718.62	-460.19	2.21
8384	90.25	337.34	6810.92	1867.21	1805.9	-497.69	1.24
8479	90.22	336.69	6810.53	1962.08	1893.36	-534.78	0.68
8574	90.15	337.22	6810.23	2056.95	1980.78	-571.97	0.56
8669	90.09	337.3	6810.03	2151.84	2068.39	-608.69	0.11
8764	90.15	338.61	6809.83	2246.77	2156.44	-644.35	1.38
8858	90.37	341.06	6809.4	2340.77	2244.67	-676.75	2.62
8953	89.72	345.06	6809.33	2435.61	2335.53	-704.42	4.27
9047	90.77	343.82	6808.93	2529.32	2426.08	-729.64	1.73
9142	91.2	343.08	6807.29	2624.14	2517.13	-756.69	0.9
9237	90.55	340.45	6805.84	2719.07	2607.34	-786.42	2.85
9332	89.85	338.81	6805.51	2814.07	2696.4	-819.48	1.88
9427	91.23	333.83	6804.61	2908.83	2783.37	-857.62	5.44
9522	91.94	334.7	6801.99	3003.32	2868.91	-898.85	1.18
9618	92.09	337.23	6798.61	3099.02	2956.53	-937.93	2.64
9713	91.82	339.91	6795.37	3193.92	3044.9	-972.61	2.83
9808	91.94	343.75	6792.25	3288.8	3135.1	-1002.22	4.04
9903	90.89	344.81	6789.91	3383.51	3226.51	-1027.95	1.57
9998	91.32	345.68	6788.07	3478.09	3318.36	-1052.14	1.02
10092	91.42	345.66	6785.83	3571.61	3409.41	-1075.4	0.11
10187	91.42	344.74	6783.47	3666.18	3501.23	-1099.66	0.97
10281	91.6	342.24	6780.99	3759.97	3591.32	-1126.36	2.67
10376	91.32	341.74	6778.57	3854.88	3681.63	-1155.72	0.6
10471	91.48	343.87	6776.25	3949.73	3772.35	-1183.8	2.25
10566	91.02	344.34	6774.18	4044.47	3863.7	-1209.81	0.69
10662	90.99	345.46	6772.5	4140.1	3956.37	-1234.81	1.17
10757	90.98	343.74	6770.86	4234.78	4047.94	-1260.03	1.81
10853	90.46	343.26	6769.66	4330.59	4139.98	-1287.3	0.74
10948	90.46	341.96	6768.89	4425.49	4230.63	-1315.69	1.37
11043	90.52	340.16	6768.08	4520.46	4320.48	-1346.52	1.9
11137	90.4	340.12	6767.33	4614.46	4408.89	-1378.45	0.13
11232	90.43	341.71	6766.64	4709.44	4498.66	-1409.51	1.67
11327	90.46	340.15	6765.9	4804.42	4588.44	-1440.55	1.64
11423	90.74	336.59	6764.89	4900.36	4677.66	-1475.93	3.72
11518	90.8	332.83	6763.62	4994.93	4763.53	-1516.5	3.96
11613	90.71	332.06	6762.37	5089.1	4847.75	-1560.45	0.82
11708	91.35	335.12	6760.66	5183.48	4932.81	-1602.69	3.29
11803	91.26	337.76	6758.49	5278.26	5019.86	-1640.65	2.78
11898	91.26	338.81	6756.4	5373.19	5108.1	-1675.79	1.1
11993	91.14	339.16	6754.41	5468.16	5196.76	-1709.85	0.39
12089	91.29	338.2	6752.38	5564.11	5286.17	-1744.74	1.01
12184	91.29	338.32	6750.24	5659.04	5374.39	-1779.92	0.13
12279	91.51	337.85	6747.92	5753.96	5462.5	-1815.37	0.55
12375	91.45	334.96	6745.44	5849.73	5550.43	-1853.78	3.01
12469	91.51	340.02	6743.01	5943.58	5637.21	-1889.74	5.38
12564	91.54	343.06	6740.48	6038.5	5727.28	-1919.81	3.2
12659	91.48	346.95	6737.98	6133.09	5819	-1944.38	4.09

RECEIVED
Office of Oil and Gas
AUG 27 2015
WV Department of
Environmental Protection

10/09/2015

17-06411

	12754	91.54	348.94	6735.47	6227.14	5911.87	-1964.21	2.09
	12849	91.72	346.39	6732.77	6321.24	6004.63	-1984.49	2.69
	12944	91.72	341.67	6729.92	6415.94	6095.89	-2010.61	4.97
	13039	91.72	339.67	6727.07	6510.88	6185.49	-2042.04	2.1
	13134	91.75	336.71	6724.19	6605.78	6273.64	-2077.32	3.11
	13229	91.72	338.21	6721.31	6700.64	6361.34	-2113.72	1.58
	13324	91.78	336.95	6718.41	6795.51	6449.12	-2149.93	1.33
	13412	91.35	337.57	6716.01	6883.38	6530.25	-2183.93	0.86
proj bit	13437	91.35	337.57	6715.42	6908.35	6553.35	-2193.47	0

TARGETS

Name	MD [ft]	TVD [ft]	North [ft]	East [ft]	Grid East [US ft]	Grid North [US ft]	Latitude	Longitude	Shape	Comment
OXFD-11C-HS LP Plat		6776	656.02	-63	1641652	247443	39°10'20.8	80°45'50.3	point	
OXFD-11C-HS BHL Rev		6800	6548.2	-2207.07	1639508	253335	39°11'18.7	80°46'18.6	point	
OXFD-11C-HS LP Rev-2		6800	622.49	-50.29	1641665	247409.5	39°10'20.5	80°45'50.1	point	

WELLPATH COMPOSITION Ref Wellbore: OXFD-11C-HS ST01 AWB Ref Wellpath: OXFD-11C-HS ST01 AWP Proj:

Log Name/	Start MD [ft]	End MD [ft]	Pos	Unc	Model
01_VES Gy	24.5	4812			Generic gyro - northseeking (Standard)
02_Weather	4812	6152			ISCWSA MWD, Rev. 2 (Standard)
03_BHI AT	6152	13412			NaviTrak (AT Curve Short Spaced)
Projection	13412	13437			Blind Drilling (std)

RECEIVED
Office of Oil and Gas
AUG 27 2015
WV Department of
Environmental Protection

10/09/2015