

JUL 13 2015

WR-35
Rev. 8/23/13

WV GEOLOGICAL SURVEY
MORGANTOWN, WV

Page ___ of ___

State of West Virginia
Department of Environmental Protection - Office of Oil and Gas
Well Operator's Report of Well Work

API 47-017-06400 County Doddridge District Grant
Quad Smithburg 7.5' Pad Name Chestnut Pad Field/Pool Name _____
Farm name Trustees Chestnut Grove Church Well Number Hoskinson Unit 2H
Operator (as registered with the OOG) Antero Resources Corporation
Address 1615 Wynkoop Street City Denver State CO Zip 80202

As Drilled location NAD 83/UTM Attach an as-drilled plat, profile view, and deviation survey
Top hole Northing 4,357,131m Easting 524,023m
Landing Point of Curve Northing 4,356,947.52m Easting 524,108.14m
Bottom Hole Northing 4,354,224m Easting 525,206m

Elevation (ft) 1,115' GL Type of Well New Existing Type of Report Interim Final
Permit Type Deviated Horizontal Horizontal 6A Vertical Depth Type Deep Shallow
Type of Operation Convert Deepen Drill Plug Back Redrilling Rework Stimulate
Well Type Brine Disposal CBM Gas Oil Secondary Recovery Solution Mining Storage Other _____
Type of Completion Single Multiple Fluids Produced Brine Gas NGL Oil Other _____
Drilled with Cable Rotary

Drilling Media Surface hole Air Mud Fresh Water Intermediate hole Air Mud Fresh Water Brine
Production hole Air Mud Fresh Water Brine

Mud Type(s) and Additive(s)
Air- Foam & 4% KCL
Mud- Polymer

Date permit issued 12/04/2013 Date drilling commenced 01/30/2014 Date drilling ceased 07/05/2014
Date completion activities began 08/02/2014 Date completion activities ceased 01/13/2015
Verbal plugging (Y/N) N/A Date permission granted N/A Granted by N/A

Please note: Operator is required to submit a plugging application within 5 days of verbal permission to plug

Freshwater depth(s) ft 67', 122' Open mine(s) (Y/N) depths No
Salt water depth(s) ft 900', 1143' Void(s) encountered (Y/N) depths None
Coal depth(s) ft None Identified Cavern(s) encountered (Y/N) depths None
Is coal being mined in area (Y/N) No

Reviewed by:

JUL 13 2015

WR-35
Rev. 8/23/13

WV GEOLOGICAL SURVEY
MORGANTOWN, WV

Page ___ of ___

API 47-017 - 06400 Farm name Trustees Chestnut Grove Church Well number Hoskinson Unit 2H

CASING STRINGS	Hole Size	Casing Size	Depth	New or Used	Grade wt/ft	Basket Depth(s)	Did cement circulate (Y/N) * Provide details below*
Conductor	24"	20"	40'	New	133#; J-55	N/A	Yes
Surface	17 1/2"	13 3/8"	360'	New	48#; H-40	N/A	Yes
Coal							
Intermediate 1	12 1/4"	9 5/8"	2,510'	New	36#; J-55	N/A	Yes
Intermediate 2							
Intermediate 3							
Production	8 3/4" & 8 1/2"	5 1/2"	17,021'	New	23#; P-110	N/A	Yes
Tubing		2 3/8"	7,037'		4.7#; N-80	N/A	
Packer type and depth set		N/A					

Comment Details _____

CEMENT DATA	Class/Type of Cement	Number of Sacks	Slurry wt (ppg)	Yield (ft ³ /sks)	Volume (ft ³)	Cement Top (MD)	WOC (hrs)
Conductor	Class A	100 sx	15.6	1.18	38	0'	8 Hrs.
Surface	Class A	426 sx	15.6	1.18	250	0'	8 Hrs.
Coal							
Intermediate 1	Class A	935 sx	15.6	1.18	783	0'	8 Hrs.
Intermediate 2							
Intermediate 3							
Production	Class H	1,090 sx (Lead); 1,531 sx (Tail)	14.5 (Lead); 15.2 (Tail)	1.3 (Lead); 1.86 (Tail)	3,439	-500' into Intermediate Casing	8 Hrs.
Tubing							

Drillers TD (ft) 17,021' MD, 7,017' TVD (BHL); 7,018' TVD (Deepest Point Drilled) Loggers TD (ft) 16,974'
Deepest formation penetrated Marcellus Plug back to (ft) N/A
Plug back procedure N/A

Kick off depth (ft) 6,556'

Check all wireline logs run caliper density deviated/directional induction
 neutron resistivity gamma ray temperature sonic

Well cored Yes No Conventional Sidewall Were cuttings collected Yes No

DESCRIBE THE CENTRALIZER PLACEMENT USED FOR EACH CASING STRING _____

Conductor- 0
Surface- 1 above guide shoe, 1 above insert float, 1 every 4th joint to surface
Intermediate- 1 above float joint, 1 above float collar, 1 every 4th joint to surface
Production- 1 above float joint, 1 below float collar, 1 every 3rd joint to top of cement

WAS WELL COMPLETED AS SHOT HOLE Yes No DETAILS _____

WAS WELL COMPLETED OPEN HOLE? Yes No DETAILS _____

WERE TRACERS USED Yes No TYPE OF TRACER(S) USED _____

JUL 13 2015

WR-35
Rev. 8/23/13

WV GEOLOGICAL SURVEY
MORGANTOWN, WV

Page ___ of ___

API 47- 017 - 06400 Farm name Trustees Chestnut Grove Church Well number Hoskinson Unit 2H

PRODUCING FORMATION(S)	DEPTHS	
Marcellus	6,941' (top) TVD	7,084' (top) MD
_____	_____	_____
_____	_____	_____
_____	_____	_____

Please insert additional pages as applicable.

GAS TEST Build up Drawdown Open Flow OIL TEST Flow Pump

SHUT-IN PRESSURE Surface 3,550 psi Bottom Hole _____ psi DURATION OF TEST _____ hrs

OPEN FLOW Gas 9,343 mcfpd Oil 11 bpd NGL _____ bpd Water 5 bpd GAS MEASURED BY Estimated Orifice Pilot

LITHOLOGY/ FORMATION	TOP DEPTH IN FT NAME TVD	BOTTOM DEPTH IN FT TVD	TOP DEPTH IN FT MD	BOTTOM DEPTH IN FT MD	DESCRIBE ROCK TYPE AND RECORD QUANTITY AND TYPE OF FLUID (FRESHWATER, BRINE, OIL, GAS, H ₂ S, ETC)
	0		0		

*** PLEASE SEE ATTACHED EXHIBIT 3**

Please insert additional pages as applicable.

Drilling Contractor Frontier Drilling, LLC
Address 562 Spring Run Road City Pennsboro State WV Zip 26415

Logging Company Rush Wellsite Services
Address 600 Alpha Drive City Canonsburg State PA Zip 15317

Cementing Company Nabors Completion & Production Services, Co.
Address 1650 Hackers Creek City Jane Lew State WV Zip 26378

Stimulating Company Baker Hughes
Address 837 Philippi Pike City Clarksburg State WV Zip 26301

Please insert additional pages as applicable.

Completed by Megan Darling Telephone 303-357-7230
Signature Megan C. Darling Title Permitting Agent Date 07/10/2015

Submittal of Hydraulic Fracturing Chemical Disclosure Information Attach copy of FRACFOCUS Registry

RECEIVED

JUL 13 2015

WV GEOLOGICAL SURVEY
MORGANTOWN, WV

API 47-017-06400 Farm Name Trustees Chestnut Grove Church Well Number Hoskinson Unit 2H					
EXHIBIT 1					
Stage No.	Perforation Date	Perforated from MD ft.	Perforated to MD ft.	Number of Perforations	Formations
1	2-Aug-14	16,761	16,930	60	Marcellus
2	26-Sep-14	16,560	16,729	60	Marcellus
3	26-Sep-14	16,360	16,529	60	Marcellus
4	26-Sep-14	16,159	16,328	60	Marcellus
5	27-Sep-14	15,958	16,127	60	Marcellus
6	28-Sep-14	15,758	15,927	60	Marcellus
7	28-Sep-14	15,557	15,726	60	Marcellus
8	28-Sep-14	15,356	15,525	60	Marcellus
9	29-Sep-14	15,156	15,325	60	Marcellus
10	24-Nov-14	14,955	15,124	60	Marcellus
11	24-Nov-14	14,754	14,924	60	Marcellus
12	25-Nov-14	14,554	14,723	60	Marcellus
13	25-Nov-14	14,353	14,522	60	Marcellus
14	26-Nov-14	14,152	14,322	60	Marcellus
15	26-Nov-14	13,952	14,121	60	Marcellus
16	27-Nov-14	13,751	13,920	60	Marcellus
17	27-Nov-14	13,550	13,720	60	Marcellus
18	27-Nov-14	13,350	13,519	60	Marcellus
19	28-Nov-14	13,149	13,318	60	Marcellus
20	28-Nov-14	12,948	13,118	60	Marcellus
21	29-Nov-14	12,748	12,917	60	Marcellus
22	29-Nov-14	12,547	12,716	60	Marcellus
23	30-Nov-14	12,346	12,516	60	Marcellus
24	30-Nov-14	12,146	12,315	60	Marcellus
25	1-Dec-14	11,945	12,114	60	Marcellus
26	1-Dec-14	11,744	11,914	60	Marcellus
27	2-Dec-14	11,544	11,713	60	Marcellus
28	2-Dec-14	11,343	11,512	60	Marcellus
29	2-Dec-14	11,142	11,312	60	Marcellus
30	2-Dec-14	10,942	11,111	60	Marcellus
31	3-Dec-14	10,741	10,910	60	Marcellus
32	3-Dec-14	10,540	10,710	60	Marcellus
33	3-Dec-14	10,340	10,509	60	Marcellus
34	3-Dec-14	10,139	10,308	60	Marcellus
35	4-Dec-14	9,939	10,108	60	Marcellus
36	4-Dec-14	9,738	9,907	60	Marcellus
37	4-Dec-14	9,537	9,706	60	Marcellus
38	4-Dec-14	9,337	9,506	60	Marcellus
39	5-Dec-14	9,136	9,305	60	Marcellus
40	5-Dec-14	8,935	9,104	60	Marcellus
41	5-Dec-14	8,735	8,904	60	Marcellus
42	6-Dec-14	8,534	8,703	60	Marcellus
43	6-Dec-14	8,333	8,502	60	Marcellus
44	6-Dec-14	8,133	8,302	60	Marcellus
45	6-Dec-14	7,932	8,101	60	Marcellus
46	7-Dec-14	7,731	7,900	60	Marcellus
47	7-Dec-14	7,531	7,700	60	Marcellus
48	7-Dec-14	7,330	7,499	60	Marcellus
49	7-Dec-14	7,129	7,299	60	Marcellus

RECEIVED
JUL 13 2015

WV GEOLOGICAL SURVEY
MORGANTOWN, WV

API 47-017-06400 Farm Name Trustees Chestnut Grove Church Well Number Hoskinson Unit 2H

EXHIBIT 2

Stage No.	Stimulations Date	Avg Pump Rate	Avg Treatment Pressure (PSI)	Max Breakdown Pressure (PSI)	ISIP (PSI)	Amount of Proppant (lbs)	Amount of Water (bbls)	Amount of Nitrogen/ other (units)
1	25-Sep-14	72.0	7,544	N/A	5,385	236,794	6,883	N/A
2	26-Sep-14	75.0	7,595	5,850	5,431	237,703	6,860	N/A
3	26-Sep-14	79.0	7,684	5,736	5,544	238,462	6,807	N/A
4	26-Sep-14	78.0	7,638	5,705	5,738	239,042	6,773	N/A
5	27-Sep-14	77.0	7,768	5,722	5,772	240,698	6,823	N/A
6	28-Sep-14	75.0	7,708	5,617	5,853	159,856	6,718	N/A
7	28-Sep-14	79.0	7,855	5,700	5,651	245,858	6,800	N/A
8	28-Sep-14	76.0	7,564	5,763	5,308	240,325	6,717	N/A
9	29-Sep-14	78.0	7,036	5,634	5,834	301,890	6,503	N/A
10	24-Nov-14	68.0	6,867	5,403	5,146	243,781	6,538	N/A
11	24-Nov-14	70.8	7,174	5,693	4,803	246,713	6,577	N/A
12	25-Nov-14	69.0	6,922	5,524	4,865	237,962	6,551	N/A
13	25-Nov-14	69.0	6,950	5,690	5,095	242,412	6,456	N/A
14	26-Nov-14	64.3	6,965	5,544	4,953	245,903	6,528	N/A
15	26-Nov-14	65.2	6,810	5,814	4,804	239,244	6,442	N/A
16	27-Nov-14	64.9	7,121	5,669	4,623	242,524	6,404	N/A
17	27-Nov-14	64.9	6,804	5,344	4,865	241,469	6,309	N/A
18	27-Nov-14	66.0	6,722	5,755	4,815	249,041	6,458	N/A
19	28-Nov-14	63.3	6,693	5,500	5,343	246,587	6,390	N/A
20	28-Nov-14	67.1	6,797	5,526	4,939	243,991	6,342	N/A
21	29-Nov-14	65.4	6,996	5,762	4,776	248,307	6,376	N/A
22	29-Nov-14	66.4	6,765	5,748	5,054	247,351	6,329	N/A
23	30-Nov-14	64.9	6,712	5,722	4,856	245,529	6,362	N/A
24	30-Nov-14	64.0	6,536	5,473	5,443	148,275	6,936	N/A
25	1-Dec-14	58.0	6,425	5,555	5,435	210,014	6,803	N/A
26	1-Dec-14	62.0	6,554	6,350	5,060	247,660	6,415	N/A
27	2-Dec-14	64.6	6,858	5,740	5,176	244,897	6,295	N/A
28	2-Dec-14	63.0	6,735	5,668	4,832	245,364	6,240	N/A
29	2-Dec-14	69.0	6,888	5,582	5,351	245,458	6,352	N/A
30	2-Dec-14	64.5	6,853	5,803	5,514	244,786	6,201	N/A
31	3-Dec-14	64.9	6,923	6,257	5,122	245,127	6,146	N/A
32	3-Dec-14	63.4	6,511	5,611	5,200	244,206	6,248	N/A
33	3-Dec-14	63.6	6,514	5,479	5,297	246,358	6,245	N/A
34	3-Dec-14	65.8	6,647	5,756	5,190	236,631	6,143	N/A
35	4-Dec-14	64.2	6,814	5,610	5,037	244,212	6,121	N/A
36	4-Dec-14	62.3	6,495	5,582	5,473	246,443	6,216	N/A
37	4-Dec-14	63.1	6,610	5,724	5,211	246,110	6,159	N/A
38	4-Dec-14	64.2	6,344	5,870	5,799	247,881	6,402	N/A
39	5-Dec-14	64.8	6,603	5,769	5,135	246,373	6,030	N/A
40	5-Dec-14	62.9	6,345	5,649	4,935	247,134	6,003	N/A
41	5-Dec-14	64.3	6,689	5,552	4,771	242,534	6,120	N/A
42	6-Dec-14	65.2	6,383	5,568	4,547	236,613	6,094	N/A
43	6-Dec-14	63.6	6,628	6,054	4,444	248,012	6,039	N/A
44	6-Dec-14	63.1	6,661	5,714	4,342	245,019	6,028	N/A
45	6-Dec-14	64.7	6,339	6,013	5,211	246,285	5,910	N/A
46	7-Dec-14	64.9	6,623	6,418	4,556	246,518	5,910	N/A
47	7-Dec-14	63.4	6,568	6,308	4,379	247,435	5,964	N/A
48	7-Dec-14	63.8	6,140	5,518	4,392	248,606	5,968	N/A
49	7-Dec-14	64.2	6,519	6,512	4,012	248,273	5,820	N/A
AVG=		66.9	6,855	5,741	5,088	11,807,666	311,754	TOTAL

EXHIBIT 3

LITHOLOGY/ FORMATION	TOP DEPTH (TVD)	BOTTOM DEPTH (TVD)	TOP DEPTH (MD)	BOTTOM DEPTH (MD)
	From Surface	From Surface	From Surface	From Surface
Fresh Water	67'	N/A	67'	N/A
Fresh Water	122'	N/A	122'	N/A
Shale/Siltstone	0	257	0	257
Shale w/ Coal	est. 257	347	est. 257	347
Shale and Siltstone	est. 347	377	est. 347	377
Shale/Sandstone/Siltstone	est. 377	1,457	est. 377	1,457
Shale and Siltstone w/trace coal	est. 1457	1,487	est. 1457	1,487
Shale/Sandstone/Siltstone	est. 1487	1,637	est. 1487	1,637
Sandstone	est. 1637	1,757	est. 1637	1,757
Sandstone w/trace coal	est. 1757	1,787	est. 1757	1,787
Shale/Sandstone/Siltstone	est. 1787	2,052	est. 1787	2,052
Big Lime	2,052	2,202	2,052	2,202
Big Injun	2,202	2,635	2,202	2,635
Gantz Sand	2,635	2,776	2,635	2,776
Fifty Foot Sandstone	2,776	2,843	2,776	2,843
Gordon	2,843	3,208	2,843	3,208
Fifth Sandstone	3,208	3,245	3,208	3,245
Bayard	3,245	3,582	3,245	3,582
Warren	3,582	3,958	3,582	3,958
Speechley	3,958	4,209	3,958	4,209
Baltown	4,209	4,714	4,209	4,714
Bradford	4,714	5,203	4,714	5,203
Benson	5,203	5,453	5,203	5,453
Alexander	5,453	5,655	5,453	5,655
Elk	5,655	6,216	5,655	6,216
Rhinestreet	6,216	6,530	6,216	6,531
Sycamore	6,530	6,716	6,531	6,730
Middlesex	6,716	6,849	6,730	6,905
Burkett	6,849	6,877	6,905	6,950
Tully	6,877	6,941	6,950	7,084
Marcellus	6,941	NA	7,084	NA

*Please note Antero determines shallow formation tops based on mud logs that are only run on one well on a multi-well pad. The measured depth (MD) data on subsequent wells may be slightly different due to the well's unique departure.

RECEIVED

JUL 13 2015

WV GEOLOGICAL SURVEY
MORGANTOWN, WV

RECEIVED

JUL 13 2015

WV GEOLOGICAL SURVEY
MORGANTOWN, WV

Hydraulic Fracturing Fluid Product Component Information Disclosure

Job Start Date:	9/25/2014
Job End Date:	12/7/2014
State:	West Virginia
County:	Doddridge
API Number:	47-017-06400-00-00
Operator Name:	Antero Resources Corporation
Well Name and Number:	Hoskinson Unit 2H
Longitude:	-80.72114200
Latitude:	39.36330300
Datum:	NAD83
Federal/Tribal Well:	NO
True Vertical Depth:	7,018
Total Base Water Volume (gal):	13,543,488
Total Base Non Water Volume:	0



Hydraulic Fracturing Fluid Composition:

Trade Name	Supplier	Purpose	Ingredients	Chemical Abstract Service Number (CAS #)	Maximum Ingredient Concentration in Additive (% by mass)**	Maximum Ingredient Concentration in HF Fluid (% by mass)**	Comments
Water	Operator	Carrier	Water	7732-18-5	100.00000	90.31328	
Sand, White, 40/70	Baker Hughes	Proppant	Crystalline Silica (Quartz)	14808-60-7	100.00000	5.09646	
Sand, White, 20/40	Baker Hughes	Proppant	Crystalline Silica (Quartz)	14808-60-7	100.00000	3.43904	
Sand, White, 100 mesh	Baker Hughes	Proppant	Crystalline Silica (Quartz)	14808-60-7	100.00000	0.64369	
GW-3LDF	Baker Hughes	Gelling Agent	Mineral Oil	8042-47-5	70.00000	0.06591	SmartCare Product
			Guar Gum	9000-30-0	60.00000	0.05649	SmartCare Product
			Paraffinic Petroleum Distillate	64742-55-8	30.00000	0.02825	SmartCare Product
			Petroleum Distillates	64742-47-8	30.00000	0.02825	SmartCare Product
			Isotridecanol, ethoxylated	9043-30-5	5.00000	0.00471	SmartCare Product
			Crystalline Silica: Quartz	14808-60-7	5.00000	0.00471	SmartCare Product
HCl, 10.1 - 15%	Baker Hughes	Acidizing	1-butoxy-2-propanol	5131-66-8	5.00000	0.00471	SmartCare Product
FRW-18	Baker Hughes	Friction Reducer	Hydrochloric Acid	7647-01-0	15.00000	0.03029	SmartCare Product

Scaletrol 720	Baker Hughes	Scale Inhibitor	Hydrotreated Light Distillate	64742-47-8	30.00000	0.01713	SmartCare Product
			Ethylene Glycol	107-21-1	45.00000	0.00661	SmartCare Product
			Calcium Chloride	10043-52-4	5.00000	0.00073	SmartCare Product
Alpha 1427	Baker Hughes	Biocide	Glutaraldehyde	111-30-8	30.00000	0.00383	SmartCare Product
			Didecyl Dimethyl Ammonium Chloride	7173-51-5	10.00000	0.00128	SmartCare Product
			Quaternary Ammonium Compound	68424-85-1	5.00000	0.00064	SmartCare Product
			Ethanol	64-17-5	5.00000	0.00064	SmartCare Product
Calcium Chloride	Baker Hughes	Salts	Calcium Chloride	10043-52-4	100.00000	0.00080	
			Potassium Chloride	7447-40-7	5.00000	0.00004	
			Sodium Chloride	7447-40-7	5.00000	0.00004	
Ferrotrol 300L	Baker Hughes	Iron Control	Citric Acid	77-92-9	60.00000	0.00084	SmartCare Product
Cl-14	Baker Hughes	Corrosion Inhibitor	Methanol	67-56-1	100.00000	0.00032	SmartCare Product
			Polyoxyalkylenes	Trade Secret	30.00000	0.00010	SmartCare Product
			Fatty Acids	Trade Secret	10.00000	0.00003	SmartCare Product
			Olefin	Trade Secret	5.00000	0.00002	SmartCare Product
			Propargyl Alcohol	107-19-7	5.00000	0.00002	SmartCare Product
Enzyme G-NE	Baker Hughes	Breaker	Contains non-hazardous ingredients which are listed in the non-MSDS section of the report	NA			SmartCare Product
Ingredients shown above are subject to 29 CFR 1910.1200(i) and appear on Material Safety Data Sheets (MSDS). Ingredients shown below are Non-MSDS.							
		Other Chemicals	Water	7732-18-5		0.22262	
			Poly (acrylamide-co-acrylic acid) partial sodium salt	Trade Secret		0.01713	
			2-Propenoic, Polymer with Sodium Phosphinate, Sodium Salt	71050-62-9		0.00294	
			Ammonium Chloride	12125-02-9		0.00171	
			Oleamide DEA	93-83-4		0.00114	
			Alcohols, C12-16, ethoxylated	Trade Secret		0.00114	
			Hemicellulase Enzyme Concentrate	90255-56-3		0.00067	
			Sorbitan Monooleate	Trade Secret		0.00029	
			Polyoxyethylene Sorbitan Monooleate	9005-65-6		0.00029	
			Potassium Chloride	7447-40-7		0.00015	
			Sodium Chloride	7647-14-5		0.00015	
			2-butoxy-1-propanol	Trade Secret		0.00009	
			Modified Thiourea Polymer	68527-49-1		0.00002	

RECEIVED

JUL 13 2015

ENVIRONMENTAL SCIENCE
MORGANTOWN, WV

LATITUDE 39°22'30"

3,672'

11,604' TO BOTTOM HOLE

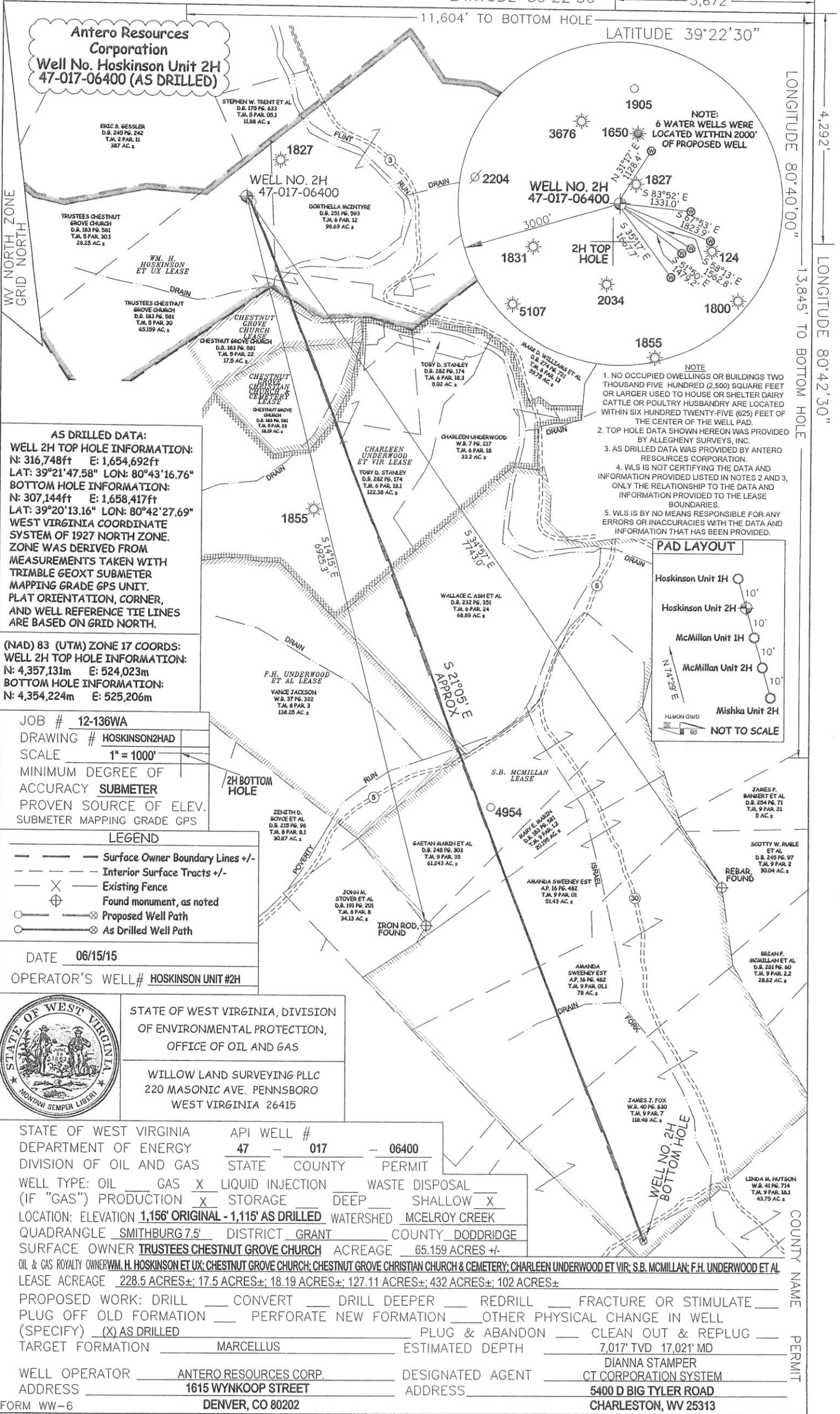
LATITUDE 39°22'30"

LONGITUDE 80°40'00"

4,292'

LONGITUDE 80°42'30"

13,845' TO BOTTOM HOLE



Antero Resources Corporation
Well No. Hoskinson Unit 2H
47-017-06400 (AS DRILLED)

AS DRILLED DATA:
WELL 2H TOP HOLE INFORMATION:
 N: 316,748ft E: 1,654,692ft
 LAT: 39°21'47.58" LON: 80°43'16.76"
BOTTOM HOLE INFORMATION:
 N: 307,144ft E: 1,658,417ft
 LAT: 39°20'13.16" LON: 80°42'27.69"
 WEST VIRGINIA COORDINATE SYSTEM OF 1927 NORTH ZONE. ZONE WAS DERIVED FROM MEASUREMENTS TAKEN WITH TRIMBLE GEOXT SUBMETER MAPPING GRADE GPS UNIT. PLAT ORIENTATION, CORNER, AND WELL REFERENCE TIE LINES ARE BASED ON GRID NORTH.

(NAD) 83 (UTM) ZONE 17 COORDS:
WELL 2H TOP HOLE INFORMATION:
 N: 4,357,131m E: 524,023m
BOTTOM HOLE INFORMATION:
 N: 4,354,224m E: 525,206m

JOB # **12-136WA**
 DRAWING # **HOSKINSON2HAD**
 SCALE **1" = 1000'**
 MINIMUM DEGREE OF ACCURACY **SUBMETER**
 PROVEN SOURCE OF ELEV. **SUBMETER MAPPING GRADE GPS**

LEGEND
 - - - - - Surface Owner Boundary Lines +/-
 - - - - - Interior Surface Tracts +/-
 X Existing Fence
 ⊕ Found monument, as noted
 ⊙ Proposed Well Path
 ⊙ As Drilled Well Path

DATE **06/15/15**
 OPERATOR'S WELL# **HOSKINSON UNIT #2H**



STATE OF WEST VIRGINIA, DIVISION OF ENVIRONMENTAL PROTECTION, OFFICE OF OIL AND GAS
 WILLOW LAND SURVEYING PLLC
 220 MASONIC AVE. PENNSBORO WEST VIRGINIA 26415

STATE OF WEST VIRGINIA DEPARTMENT OF ENERGY DIVISION OF OIL AND GAS
 API WELL # **47 - 017 - 06400**
 STATE COUNTY PERMIT

WELL TYPE: OIL GAS LIQUID INJECTION WASTE DISPOSAL
 (IF "GAS") PRODUCTION STORAGE DEEP SHALLOW
 LOCATION: ELEVATION **1,156' ORIGINAL - 1,115' AS DRILLED** WATERSHED **MCELROY CREEK**
 QUADRANGLE **SMITHBURG 7.5'** DISTRICT **GRANT** COUNTY **DODDRIDGE**
 SURFACE OWNER **TRUSTEES CHESTNUT GROVE CHURCH** ACREAGE **65.159 ACRES +/-**
 OIL & GAS ROYALTY OWNER **W.M. HOSKINSON ET UX; CHESTNUT GROVE CHURCH; CHESTNUT GROVE CHRISTIAN CHURCH & CEMETERY; CHARLEEN UNDERWOOD ET VIR; S.B. MCMILLAN; F.H. UNDERWOOD ET AL**
 LEASE ACREAGE **228.5 ACRES±; 17.5 ACRES±; 18.19 ACRES±; 127.11 ACRES±; 432 ACRES±; 102 ACRES±**

PROPOSED WORK: DRILL CONVERT DRILL DEEPER REDRILL FRACTURE OR STIMULATE
 PLUG OFF OLD FORMATION PERFORATE NEW FORMATION OTHER PHYSICAL CHANGE IN WELL
 (SPECIFY) AS DRILLED PLUG & ABANDON CLEAN OUT & REPLUG
 TARGET FORMATION **MARCELLUS** ESTIMATED DEPTH **7,017' TVD 17,021' MD**

WELL OPERATOR **ANTERO RESOURCES CORP.** DESIGNATED AGENT **DIANNA STAMPER**
 ADDRESS **1615 WYNKOOP STREET** ADDRESS **5400 D BIG TYLER ROAD**
DENVER, CO 80202 **CHARLESTON, WV 25313**

NOTE:
 6 WATER WELLS WERE LOCATED WITHIN 2000' OF PROPOSED WELL

NOTE
 1. NO OCCUPIED DWELLINGS OR BUILDINGS TWO THOUSAND FIVE HUNDRED (2,500) SQUARE FEET OR LARGER USED TO HOUSE OR SHELTER DAIRY CATTLE OR POULTRY HUSBANDRY ARE LOCATED WITHIN SIX HUNDRED TWENTY-FIVE (625) FEET OF THE CENTER OF THE WELL PAD.
 2. TOP HOLE DATA SHOWN HEREON WAS PROVIDED BY ALLEGHENY SURVEYS, INC.
 3. AS DRILLED DATA WAS PROVIDED BY ANTERO RESOURCES CORPORATION.
 4. WLS IS NOT CERTIFYING THE DATA AND INFORMATION PROVIDED LISTED IN NOTES 2 AND 3, ONLY THE RELATIONSHIP TO THE DATA AND INFORMATION PROVIDED TO THE LEASE BOUNDARIES.
 5. WLS IS BY NO MEANS RESPONSIBLE FOR ANY ERRORS OR INACCURACIES WITH THE DATA AND INFORMATION THAT HAS BEEN PROVIDED.

