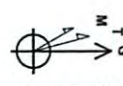




Hoskinson Unit 1H
 Doddridge County WV
 Northing: 14294307.35
 Easting: 1719193.66
 As Drilled



RECEIVED
 Office of Oil and Gas
 JUL 13 2015
 WV Department of
 Environmental Protection

Azimuths to Grid North
 True North: -0.18°
 Magnetic North: -8.70°
 To convert Magnetic-North to Grid, Subtract 8.7°
 To convert True North to Grid, Subtract 0.18°
 Magnetic Field
 Strength: 52370.8nT
 Dip Angle: 66.90°
 Date: 7/30/2014
 Model: IGRF2010

WELL DETAILS Hoskinson Unit 1H

+N/S	+E/W	Northing	Easting	Ground Level	1115.0	Latitude	80° 43' 16.62" N	Longitude	166° 22' 17.78" W
0.0	0.0	14294307.35	1719193.66			39° 21' 47.810" N	80° 43' 16.622" W		

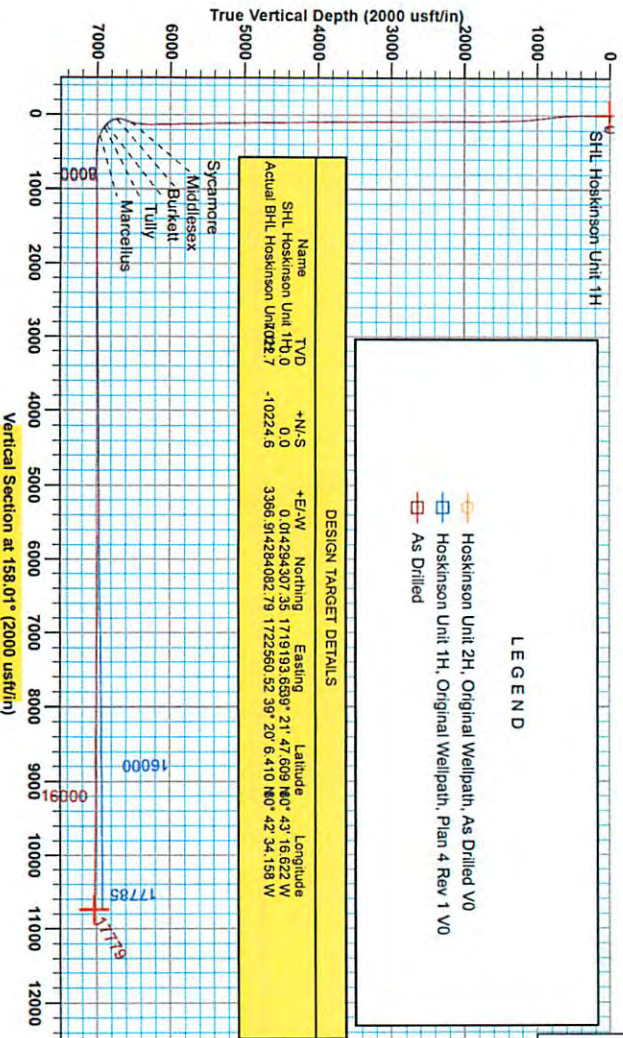
PROJECT DETAILS: Doddridge County WV

Geodetic System: Universal Transverse Mercator (US Survey Feet)
 Datum: NAD 1983 (NAD80 CONUS)
 Ellipsoid: Clarke 1866
 Zone: Zone 17N (84 W to 78 W)
 System Datum: Mean Sea Level

Genie Lightfoot
 15.50, August 04 2014
 Scientific Drilling
 421 South Eagle Lane
 Oklahoma City, OK 73128

LEGEND

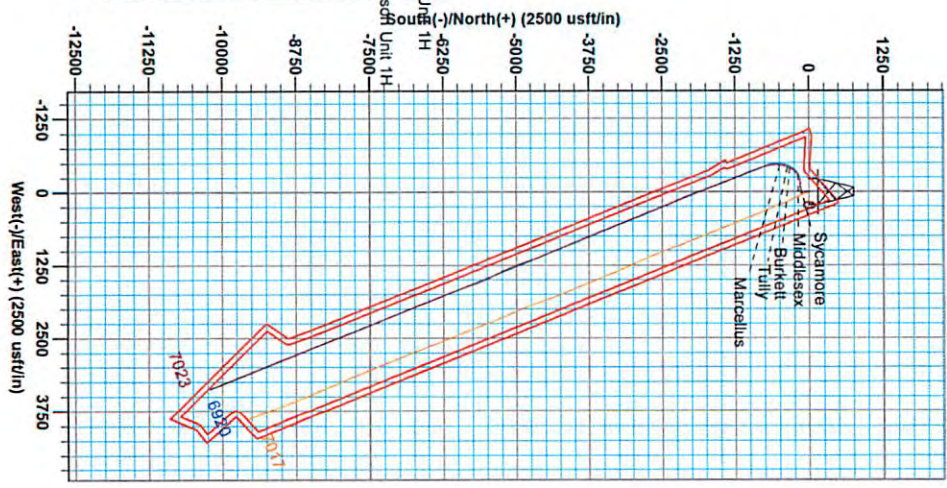
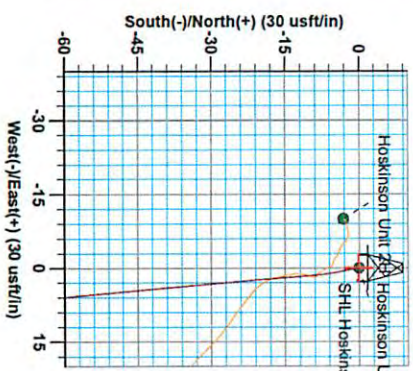
- Hoskinson Unit 2H, Original Wellpath, As Drilled VO
- Hoskinson Unit 1H, Original Wellpath, Plan 4 Rev 1 VO
- As Drilled



FORMATION TOP DETAILS
 No formation data is available

SITE DETAILS: Mishiva/McMillan/Hoskinson Pad

Site Center: Mishiva Unit 2H
 Mishiva / McMillan / Hoskinson
 Site Center Northing: 14294295.71
 Easting: 1719154.89
 Positional Uncertainty: 2.0
 Contouring: 0.18
 Local North: Grid



08/14/2015



Antero Resources

Doddridge County WV
Mishka/McMillan/Hoskinson Pad
Hoskinson Unit 1H
Original Wellpath

Design: As Drilled

EOW Completion Report

04 August, 2014

RECEIVED
Office of Oil and Gas

JUL 13 2015

WV Department of
Environmental Protection

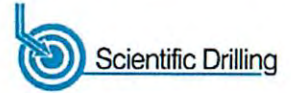


Scientific Drilling

08/14/2015



EOW Completion Report



Company:	Antero Resources	Local Co-ordinate Reference:	Well Hoskinson Unit 1H
Project:	Doddridge County WV	TVD Reference:	Frontier 22: 1115' GL + 25' RKB @ 1140.0usft
Site:	Mishka/McMillan/Hoskinson Pad	MD Reference:	Frontier 22: 1115' GL + 25' RKB @ 1140.0usft
Well:	Hoskinson Unit 1H	North Reference:	Grid
Wellbore:	Original Wellpath	Survey Calculation Method:	Minimum Curvature
Design:	As Drilled	Database:	Oklahoma District

Project	Doddridge County WV, McClellan District		
Map System:	Universal Transverse Mercator (US Survey Feet)	System Datum:	Mean Sea Level
Geo Datum:	NAD 1927 (NADCON CONUS)		
Map Zone:	Zone 17N (84 W to 78 W)		

Site	Mishka/McMillan/Hoskinson Pad, Site Center: Mishka Unit 2H				
Site Position:	Northing:	14,294,295.71 usft	Latitude:	39° 21' 47.496 N	
From:	Easting:	1,719,154.86 usft	Longitude:	80° 43' 17.117 W	
Position Uncertainty:	2.0 usft	Slot Radius:	13-3/16"	Grid Convergence:	0.18 °

Well	Hoskinson Unit 1H, Marcellus					
Well Position	+N/-S	0.0 usft	Northing:	14,294,307.35 usft	Latitude:	39° 21' 47.610 N
	+E/-W	0.0 usft	Easting:	1,719,193.66 usft	Longitude:	80° 43' 16.622 W
Position Uncertainty	2.0 usft	Wellhead Elevation:	1,140.0 usft	Ground Level:	1,115.0 usft	

Wellbore	Original Wellpath				
Magnetics	Model Name	Sample Date	Declination (°)	Dip Angle (°)	Field Strength (nT)
	IGRF2010	1/30/2014	-8.52	66.90	52,371

Design	As Drilled				
Audit Notes:					
Version:	1.0	Phase:	ACTUAL	Tie On Depth:	0.0
Vertical Section:	Depth From (TVD) (usft)	+N/-S (usft)	+E/-W (usft)	Direction (°)	
	0.0	0.0	0.0	158.01	

Survey Program	Date 8/4/2014				
From (usft)	To (usft)	Survey (Wellbore)	Tool Name	Description	
112.0	6,223.0	Survey #4 Def Gyro to KOP (Original Well)	SDI Standard Keeper	Scientific Drilling Intl. Standard Wireline Keeper	
6,258.0	17,779.0	Survey #5 MWD (Original Wellpath)	MWD SDI	MWD - Standard ver 1.0.1	

Survey									
MD (usft)	Inc (°)	Azi (azimuth) (°)	TVD (usft)	N/S (usft)	E/W (usft)	V. Sec (usft)	DLeg (°/100usft)		
0.0	0.00	0.00	0.0	0.0	0.0	0.0	0.0	0.00	
112.0	0.21	156.62	112.0	-0.2	0.1	0.2	0.19	0.19	
212.0	0.19	184.06	212.0	-0.5	0.1	0.5	0.10	0.10	
312.0	0.21	172.95	312.0	-0.9	0.2	0.9	0.04	0.04	
412.0	1.12	167.73	412.0	-2.0	0.4	2.0	0.91	0.91	
512.0	2.36	169.98	511.9	-5.0	0.9	5.0	1.24	1.24	
612.0	4.19	175.26	611.8	-10.7	1.6	10.5	1.85	1.85	
712.0	6.48	175.55	711.3	-19.9	2.9	19.4	2.29	2.29	
812.0	7.27	174.76	810.6	-31.9	3.1	30.8	0.80	0.80	
912.0	7.48	174.98	909.8	-44.6	4.5	43.1	0.21	0.21	
1,012.0	5.99	174.78	1,009.1	-56.3	5.6	54.3	1.49	1.49	

RECEIVED
Office of Oil and Gas
JUL 13 2015



EOW Completion Report



Company:	Antero Resources	Local Co-ordinate Reference:	Well Hoskinson Unit 1H
Project:	Doddridge County WV	TVD Reference:	Frontier 22: 1115' GL + 25' RKB @ 1140.0usft
Site:	Mishka/McMillan/Hoskinson Pad	MD Reference:	Frontier 22: 1115' GL + 25' RKB @ 1140.0usft
Well:	Hoskinson Unit 1H	North Reference:	Grid
Wellbore:	Original Wellpath	Survey Calculation Method:	Minimum Curvature
Design:	As Drilled	Database:	Oklahoma District

Survey								
MD (usft)	Inc (°)	Azi (azimuth) (°)	TVD (usft)	N/S (usft)	E/W (usft)	V. Sec (usft)	DLeg (°/100usft)	
1,112.0	4.28	173.94	1,108.7	-65.2	6.4	62.9	1.71	
1,212.0	3.35	174.46	1,208.5	-71.8	7.1	69.3	0.93	
1,312.0	2.40	176.30	1,308.3	-76.8	7.5	74.1	0.95	
1,412.0	1.74	173.53	1,408.3	-80.4	7.8	77.5	0.67	
1,512.0	1.30	168.28	1,508.2	-83.1	8.2	80.1	0.46	
1,612.0	1.15	168.13	1,608.2	-85.2	8.7	82.2	0.15	
1,712.0	0.79	168.32	1,708.2	-86.8	9.0	83.9	0.36	
1,812.0	0.64	154.24	1,808.2	-88.0	9.4	85.1	0.23	
1,912.0	0.58	157.01	1,908.2	-89.0	9.8	86.2	0.07	
2,012.0	0.49	164.05	2,008.2	-89.8	10.1	87.1	0.11	
2,112.0	0.33	161.08	2,108.2	-90.5	10.4	87.8	0.16	
2,212.0	0.32	169.08	2,208.2	-91.1	10.5	88.4	0.05	
2,312.0	0.23	174.12	2,308.2	-91.5	10.6	88.8	0.09	
2,412.0	0.20	183.78	2,408.2	-91.9	10.6	89.2	0.05	
2,512.0	0.20	204.30	2,508.2	-92.2	10.5	89.5	0.07	
2,612.0	0.24	220.83	2,608.2	-92.6	10.3	89.7	0.07	
2,712.0	0.19	227.00	2,708.2	-92.8	10.0	89.8	0.06	
2,812.0	0.27	227.02	2,808.2	-93.1	9.7	90.0	0.08	
2,912.0	0.32	222.57	2,908.2	-93.5	9.4	90.2	0.05	
3,012.0	0.29	219.24	3,008.2	-93.9	9.0	90.4	0.03	
3,112.0	0.29	192.47	3,108.2	-94.3	8.8	90.8	0.13	
3,212.0	0.30	176.78	3,208.2	-94.8	8.8	91.2	0.08	
3,312.0	0.32	181.99	3,308.2	-95.4	8.8	91.7	0.03	
3,412.0	0.44	159.61	3,408.2	-96.0	8.9	92.4	0.19	
3,512.0	0.44	170.46	3,508.2	-96.7	9.1	93.1	0.08	
3,612.0	0.47	161.12	3,608.2	-97.5	9.3	93.9	0.08	
3,712.0	0.46	171.23	3,708.2	-98.3	9.5	94.7	0.08	
3,812.0	0.47	161.83	3,808.2	-99.1	9.7	95.5	0.08	
3,912.0	0.46	156.44	3,908.2	-99.8	10.0	96.3	0.04	
4,012.0	0.47	164.95	4,008.1	-100.6	10.2	97.1	0.07	
4,112.0	0.54	148.35	4,108.1	-101.4	10.6	98.0	0.16	
4,212.0	0.65	145.41	4,208.1	-102.3	11.2	99.0	0.11	
4,312.0	0.72	139.31	4,308.1	-103.2	11.9	100.2	0.10	
4,412.0	0.71	145.92	4,408.1	-104.2	12.7	101.4	0.08	
4,512.0	0.79	137.49	4,508.1	-105.2	13.5	102.6	0.14	
4,612.0	0.76	136.72	4,608.1	-106.2	14.4	103.9	0.03	
4,712.0	0.84	131.69	4,708.1	-107.2	15.4	105.1	0.11	
4,812.0	0.94	139.75	4,808.1	-108.3	16.5	106.6	0.16	
4,912.0	0.96	135.56	4,908.1	-109.5	17.6	108.1	0.07	
5,012.0	1.00	136.51	5,008.1	-110.8	18.8	109.7	0.04	
5,112.0	1.03	136.75	5,108.0	-112.0	20.0	111.4	0.03	
5,212.0	0.98	134.53	5,208.0	-113.3	21.2	113.0	0.06	
5,312.0	0.89	141.76	5,308.0	-114.5	22.3	114.5	0.15	
5,412.0	0.92	144.04	5,408.0	-115.8	23.3	116.1	0.05	

RECEIVED
Office of Oil and Gas
JUL 13 2015

Company:	Antero Resources	Local Co-ordinate Reference:	Well Hoskinson Unit 1H
Project:	Doddridge County WV	TVD Reference:	Frontier 22: 1115' GL + 25' RKB @ 1140.0usft
Site:	Mishka/McMillan/Hoskinson Pad	MD Reference:	Frontier 22: 1115' GL + 25' RKB @ 1140.0usft
Well:	Hoskinson Unit 1H	North Reference:	Grid
Wellbore:	Original Wellpath	Survey Calculation Method:	Minimum Curvature
Design:	As Drilled	Database:	Oklahoma District

Survey								
MD (usft)	Inc (°)	Azi (azimuth) (°)	TVD (usft)	N/S (usft)	E/W (usft)	V. Sec (usft)	DLeg (°/100usft)	
5,512.0	0.93	141.17	5,508.0	-117.0	24.2	117.6	0.05	
5,612.0	0.93	144.35	5,608.0	-118.3	25.2	119.2	0.05	
5,712.0	1.16	142.91	5,708.0	-119.8	26.3	120.9	0.23	
5,812.0	1.51	138.60	5,807.9	-121.6	27.8	123.2	0.36	
5,912.0	1.70	141.86	5,907.9	-123.8	29.6	125.8	0.21	
6,012.0	1.69	145.14	6,007.8	-126.1	31.3	128.7	0.10	
6,112.0	1.57	152.52	6,107.8	-128.6	32.8	131.5	0.24	
6,212.0	1.32	152.46	6,207.8	-130.8	34.0	134.0	0.25	
6,223.0	1.25	156.95	6,218.8	-131.0	34.1	134.2	1.11	
6,258.0	1.50	221.01	6,253.8	-131.7	33.9	134.8	4.21	
6,290.0	6.08	251.27	6,285.7	-132.6	32.0	134.9	15.14	
6,322.0	11.15	258.64	6,317.3	-133.7	27.4	134.3	16.18	
6,354.0	15.31	260.07	6,348.5	-135.1	20.2	132.8	13.04	
6,386.0	18.77	260.20	6,379.0	-136.7	11.0	130.8	10.81	
6,418.0	22.03	261.21	6,409.0	-138.5	0.0	128.4	10.25	
6,450.0	25.47	262.00	6,438.3	-140.3	-12.8	125.3	10.80	
6,482.0	29.12	262.79	6,466.8	-142.3	-27.3	121.7	11.46	
6,514.0	32.91	264.96	6,494.2	-144.0	-43.7	117.2	12.35	
6,547.0	36.62	267.87	6,521.3	-145.2	-62.5	111.2	12.31	
6,572.0	39.74	268.82	6,540.9	-145.6	-77.9	105.8	12.71	
Sycamore								
6,579.0	40.62	269.06	6,546.3	-145.7	-82.5	104.2	12.71	
6,611.0	44.39	268.49	6,569.9	-146.2	-104.1	96.6	11.84	
6,643.0	47.11	266.92	6,592.2	-147.1	-127.0	88.8	9.20	
6,675.0	51.09	267.01	6,613.1	-148.4	-151.1	81.0	12.44	
6,706.0	53.04	265.12	6,632.2	-150.1	-175.5	73.4	7.92	
6,738.0	52.62	260.31	6,651.5	-153.3	-200.8	66.9	12.05	
6,770.0	51.06	254.51	6,671.3	-158.7	-225.3	62.8	15.06	
6,802.0	49.55	248.85	6,691.8	-166.5	-248.7	61.2	14.40	
6,834.0	48.84	244.12	6,712.7	-176.1	-270.9	61.9	11.40	
6,866.0	49.15	238.80	6,733.7	-187.7	-292.1	64.6	12.58	
6,870.0	49.21	238.19	6,736.3	-189.2	-294.7	65.1	11.67	
Middlesex								
6,898.0	49.68	233.93	6,754.5	-201.1	-312.3	69.5	11.67	
6,931.0	50.56	230.05	6,775.7	-216.7	-332.3	76.5	9.41	
6,963.0	51.51	225.35	6,795.8	-233.4	-350.6	85.2	11.80	
6,995.0	53.55	220.47	6,815.3	-252.0	-367.9	95.9	13.68	
7,027.0	54.68	216.41	6,834.0	-272.4	-384.0	108.7	10.87	
7,059.0	55.50	211.83	6,852.4	-294.1	-398.7	123.4	12.01	
7,091.0	56.45	206.51	6,870.3	-317.2	-411.6	140.0	14.09	
7,101.0	56.96	205.73	6,875.8	-324.7	-415.3	145.6	8.25	
Burkett								
7,123.0	58.10	204.06	6,887.6	-341.6	-423.1	158.5	8.25	
7,153.0	59.41	201.56	6,903.1	-365.2	-433.1	176.5	8.35	
Tully								

Company:	Antero Resources	Local Co-ordinate Reference:	Well Hoskinson Unit 1H
Project:	Doddridge County WV	TVD Reference:	Frontier 22: 1115' GL + 25' RKB @ 1140.0usft
Site:	Mishka/McMillan/Hoskinson Pad	MD Reference:	Frontier 22: 1115' GL + 25' RKB @ 1140.0usft
Well:	Hoskinson Unit 1H	North Reference:	Grid
Wellbore:	Original Wellpath	Survey Calculation Method:	Minimum Curvature
Design:	As Drilled	Database:	Oklahoma District

Survey								
MD (usft)	Inc (°)	Azi (azimuth) (°)	TVD (usft)	N/S (usft)	E/W (usft)	V. Sec (usft)	DLeg (°/100usft)	
7,155.0	59.50	201.40	6,904.2	-366.8	-433.7	177.7	8.35	
7,187.0	61.98	197.70	6,919.8	-393.1	-443.0	198.6	12.72	
7,220.0	64.56	193.57	6,934.7	-421.5	-451.0	222.0	13.64	
7,251.0	66.62	190.36	6,947.5	-449.1	-456.8	245.4	11.53	
7,283.0	69.79	187.76	6,959.3	-478.4	-461.5	270.8	12.45	
7,300.0	71.76	186.34	6,964.9	-494.4	-463.4	284.9	14.02	
Marcellus								
7,315.0	73.51	185.12	6,969.4	-508.6	-464.9	297.5	14.02	
7,347.0	75.03	181.62	6,978.1	-539.3	-466.7	325.4	11.55	
7,379.0	76.84	178.55	6,985.9	-570.4	-466.7	354.1	10.89	
7,412.0	80.58	177.19	6,992.3	-602.7	-465.5	384.6	12.03	
7,444.0	83.69	173.36	6,996.7	-634.3	-462.9	414.8	15.33	
7,476.0	85.10	170.18	6,999.8	-665.8	-458.3	445.7	10.83	
7,508.0	85.23	167.78	7,002.5	-697.1	-452.3	477.0	7.48	
7,522.0	86.14	166.65	7,003.6	-710.7	-449.2	490.8	10.35	
7,576.0	91.14	163.59	7,004.9	-762.9	-435.3	544.4	10.85	
7,672.0	89.97	162.10	7,003.9	-854.6	-407.0	640.0	1.97	
7,768.0	90.10	158.51	7,003.9	-945.0	-374.6	735.9	3.74	
7,865.0	91.07	159.59	7,002.9	-1,035.5	-340.0	832.9	1.50	
7,961.0	90.54	155.60	7,001.5	-1,124.3	-303.4	928.9	4.19	
8,057.0	89.83	156.56	7,001.2	-1,212.0	-264.5	1,024.8	1.24	
8,154.0	90.50	156.53	7,001.0	-1,301.0	-225.9	1,121.8	0.69	
8,250.0	89.73	157.84	7,000.8	-1,389.5	-188.6	1,217.8	1.58	
8,346.0	90.00	157.49	7,001.0	-1,478.3	-152.1	1,313.8	0.46	
8,443.0	89.13	156.25	7,001.7	-1,567.5	-114.0	1,410.7	1.56	
8,539.0	88.76	157.83	7,003.5	-1,655.9	-76.6	1,506.7	1.69	
8,635.0	91.38	161.78	7,003.4	-1,745.9	-43.5	1,602.6	4.94	
8,732.0	91.81	161.67	7,000.7	-1,838.0	-13.1	1,699.4	0.46	
8,828.0	90.34	158.92	6,998.9	-1,928.4	19.3	1,795.3	3.25	
8,924.0	91.58	158.03	6,997.3	-2,017.6	54.5	1,891.3	1.59	
9,021.0	90.97	155.00	6,995.1	-2,106.6	93.2	1,988.2	3.19	
9,117.0	90.94	155.55	6,993.5	-2,193.8	133.3	2,084.1	0.57	
9,213.0	92.08	157.50	6,991.0	-2,281.8	171.5	2,180.0	2.35	
9,310.0	90.34	156.06	6,988.9	-2,370.9	209.8	2,277.0	2.33	
9,406.0	90.84	159.87	6,987.9	-2,459.9	245.8	2,372.9	4.00	
9,502.0	91.14	159.32	6,986.3	-2,549.8	279.2	2,468.9	0.65	
9,598.0	90.57	157.13	6,984.9	-2,639.0	314.8	2,564.9	2.36	
9,695.0	91.10	159.79	6,983.4	-2,729.2	350.4	2,661.8	2.80	
9,792.0	90.74	158.67	6,981.9	-2,819.8	384.8	2,758.8	1.21	
9,887.0	90.24	157.14	6,981.1	-2,907.9	420.6	2,853.8	1.69	
9,983.0	91.38	157.83	6,979.7	-2,996.5	457.3	2,948.8	1.39	
10,079.0	91.51	158.06	6,977.3	-3,085.5	494.0	3,045.7	0.28	
10,175.0	91.64	157.72	6,974.7	-3,174.4	529.5	3,141.7	0.38	
10,272.0	89.33	157.62	6,973.8	-3,264.1	566.3	3,238.7	2.38	
10,362.0	90.34	158.87	6,974.1	-3,347.7	599.7	3,328.7	1.79	



EOW Completion Report



Company:	Antero Resources	Local Co-ordinate Reference:	Well Hoskinson Unit 1H
Project:	Doddridge County WV	TVD Reference:	Frontier 22: 1115' GL + 25' RKB @ 1140.0usft
Site:	Mishka/McMillan/Hoskinson Pad	MD Reference:	Frontier 22: 1115' GL + 25' RKB @ 1140.0usft
Well:	Hoskinson Unit 1H	North Reference:	Grid
Wellbore:	Original Wellpath	Survey Calculation Method:	Minimum Curvature
Design:	As Drilled	Database:	Oklahoma District

Survey								
MD (usft)	Inc (°)	Azi (azimuth) (°)	TVD (usft)	N/S (usft)	E/W (usft)	V. Sec (usft)	DLeg (°/100usft)	
10,453.0	91.11	158.26	6,972.9	-3,432.4	632.9	3,419.7	1.08	
10,543.0	89.97	158.68	6,972.1	-3,516.1	666.0	3,509.7	1.35	
10,634.0	89.46	157.85	6,972.5	-3,600.6	699.7	3,600.7	1.07	
10,725.0	89.97	158.35	6,973.0	-3,685.1	733.6	3,691.7	0.78	
10,815.0	90.24	158.23	6,972.8	-3,768.7	766.9	3,781.7	0.33	
10,906.0	90.48	158.29	6,972.3	-3,853.2	800.6	3,872.7	0.27	
10,996.0	90.40	157.11	6,971.6	-3,936.5	834.8	3,962.7	1.31	
11,087.0	90.34	156.27	6,971.0	-4,020.0	870.8	4,053.6	0.93	
11,178.0	90.74	158.50	6,970.1	-4,104.0	905.7	4,144.6	2.49	
11,268.0	90.67	158.05	6,969.0	-4,187.6	939.1	4,234.6	0.51	
11,359.0	91.31	157.71	6,967.4	-4,271.9	973.3	4,325.6	0.80	
11,455.0	90.00	157.06	6,966.3	-4,360.5	1,010.2	4,421.6	1.52	
11,551.0	89.43	156.04	6,966.8	-4,448.6	1,048.4	4,517.5	1.22	
11,648.0	89.33	156.17	6,967.9	-4,537.3	1,087.7	4,614.5	0.17	
11,744.0	90.34	160.78	6,968.1	-4,626.6	1,122.9	4,710.5	4.92	
11,841.0	89.90	161.66	6,967.9	-4,718.4	1,154.2	4,807.3	1.01	
11,937.0	90.47	162.79	6,967.6	-4,809.8	1,183.5	4,903.0	1.32	
12,033.0	89.26	159.50	6,967.9	-4,900.7	1,214.5	4,998.9	3.65	
12,130.0	89.33	157.30	6,969.1	-4,990.8	1,250.2	5,095.9	2.27	
12,226.0	90.20	160.06	6,969.4	-5,080.2	1,285.1	5,191.9	3.01	
12,322.0	89.77	155.85	6,969.5	-5,169.2	1,321.1	5,287.8	4.41	
12,419.0	89.56	153.39	6,970.0	-5,256.8	1,362.7	5,384.6	2.55	
12,515.0	89.16	151.29	6,971.1	-5,341.9	1,407.2	5,480.2	2.23	
12,611.0	89.06	153.84	6,972.6	-5,427.0	1,451.5	5,575.7	2.66	
12,708.0	89.77	156.37	6,973.6	-5,515.0	1,492.3	5,672.6	2.71	
12,804.0	88.49	158.72	6,975.1	-5,603.7	1,529.0	5,768.6	2.79	
12,900.0	88.89	159.20	6,977.2	-5,693.3	1,563.4	5,864.5	0.65	
12,997.0	89.60	161.73	6,978.5	-5,784.7	1,595.8	5,961.4	2.71	
13,093.0	89.20	160.50	6,979.5	-5,875.5	1,626.9	6,057.3	1.35	
13,189.0	89.66	161.40	6,980.5	-5,966.3	1,658.2	6,153.1	1.05	
13,286.0	88.42	156.59	6,982.1	-6,056.8	1,693.0	6,250.1	5.12	
13,382.0	88.93	157.28	6,984.3	-6,145.1	1,730.6	6,346.0	0.89	
13,478.0	89.33	158.22	6,985.8	-6,233.9	1,766.9	6,442.0	1.06	
13,574.0	89.23	157.02	6,987.0	-6,322.7	1,803.5	6,538.0	1.25	
13,670.0	90.40	158.47	6,987.3	-6,411.5	1,839.8	6,634.0	1.94	
13,766.0	89.60	156.42	6,987.3	-6,500.2	1,876.7	6,730.0	2.29	
13,863.0	87.95	159.68	6,989.4	-6,590.1	1,912.9	6,826.9	3.77	
13,959.0	88.62	160.16	6,992.3	-6,680.2	1,945.9	6,922.9	0.86	
14,056.0	87.86	157.07	6,995.2	-6,770.5	1,981.2	7,019.8	3.28	
14,152.0	87.78	156.40	6,998.9	-6,858.6	2,019.1	7,116.7	0.70	
14,248.0	89.80	157.23	7,000.9	-6,946.8	2,056.9	7,213.6	0.97	
14,344.0	88.89	157.51	7,002.0	-7,035.4	2,093.8	7,307.6	0.99	
14,440.0	90.30	160.19	7,002.7	-7,125.0	2,128.4	7,401.6	3.15	
14,537.0	89.70	157.44	7,002.7	-7,215.4	2,163.5	7,500.6	2.90	

RECEIVED
Office of Oil and Gas
July 13 2015

Company:	Antero Resources	Local Co-ordinate Reference:	Well Hoskinson Unit 1H
Project:	Doddridge County WV	TVD Reference:	Frontier 22: 1115' GL + 25' RKB @ 1140.0usft
Site:	Mishka/McMillan/Hoskinson Pad	MD Reference:	Frontier 22: 1115' GL + 25' RKB @ 1140.0usft
Well:	Hoskinson Unit 1H	North Reference:	Grid
Wellbore:	Original Wellpath	Survey Calculation Method:	Minimum Curvature
Design:	As Drilled	Database:	Oklahoma District

Survey								
MD (usft)	Inc (°)	Azi (azimuth) (°)	TVD (usft)	N/S (usft)	E/W (usft)	V. Sec (usft)	DLeg (°/100usft)	
14,633.0	89.36	154.69	7,003.5	-7,303.1	2,202.4	7,596.5	2.89	
14,729.0	89.53	157.17	7,004.4	-7,390.8	2,241.6	7,692.4	2.59	
14,825.0	89.66	158.88	7,005.1	-7,479.8	2,277.5	7,788.4	1.79	
14,921.0	90.30	157.93	7,005.1	-7,569.1	2,312.8	7,884.4	1.19	
15,017.0	88.79	156.37	7,005.9	-7,657.5	2,350.1	7,980.4	2.26	
15,114.0	89.36	158.48	7,007.4	-7,747.1	2,387.3	8,077.4	2.25	
15,210.0	90.13	159.98	7,007.9	-7,836.8	2,421.4	8,173.4	1.76	
15,306.0	90.87	159.82	7,007.0	-7,927.0	2,454.4	8,269.3	0.79	
15,401.0	90.00	158.19	7,006.3	-8,015.7	2,488.4	8,364.3	1.94	
15,498.0	88.59	159.09	7,007.5	-8,106.0	2,523.7	8,461.3	1.72	
15,594.0	88.62	158.74	7,009.8	-8,195.5	2,558.3	8,557.2	0.37	
15,691.0	90.30	158.24	7,010.8	-8,285.8	2,593.8	8,654.2	1.81	
15,787.0	90.10	157.04	7,010.4	-8,374.5	2,630.4	8,750.2	1.27	
15,883.0	90.84	158.91	7,009.6	-8,463.5	2,666.3	8,846.2	2.09	
15,979.0	89.16	156.79	7,009.6	-8,552.4	2,702.5	8,942.2	2.82	
16,075.0	89.50	155.75	7,010.8	-8,640.3	2,741.2	9,038.1	1.14	
16,171.0	88.72	157.05	7,012.3	-8,728.3	2,779.6	9,134.1	1.58	
16,267.0	90.17	160.18	7,013.2	-8,817.6	2,814.6	9,230.1	3.59	
16,363.0	90.40	159.83	7,012.7	-8,907.9	2,847.4	9,326.0	0.44	
16,460.0	88.69	159.10	7,013.5	-8,998.7	2,881.4	9,423.0	1.92	
16,556.0	89.36	158.62	7,015.1	-9,088.2	2,916.1	9,518.9	0.86	
16,652.0	90.23	158.45	7,015.5	-9,177.6	2,951.2	9,614.9	0.92	
16,748.0	89.80	157.30	7,015.4	-9,266.5	2,987.3	9,710.9	1.28	
16,844.0	89.30	156.86	7,016.2	-9,354.9	3,024.7	9,806.9	0.69	
16,941.0	89.09	156.11	7,017.5	-9,443.8	3,063.4	9,903.9	0.80	
17,037.0	89.46	159.18	7,018.8	-9,532.6	3,099.9	9,999.9	3.22	
17,134.0	90.13	158.84	7,019.1	-9,623.2	3,134.7	10,096.8	0.77	
17,229.0	90.40	158.44	7,018.7	-9,711.6	3,169.3	10,191.8	0.51	
17,326.0	89.16	158.37	7,019.0	-9,801.8	3,205.0	10,288.8	1.28	
17,422.0	88.53	157.14	7,021.0	-9,890.7	3,241.3	10,384.8	1.44	
17,518.0	88.56	156.39	7,023.4	-9,978.8	3,279.2	10,480.8	0.78	
17,615.0	90.57	161.01	7,024.1	-10,069.2	3,314.4	10,577.7	5.19	
17,711.0	90.44	161.61	7,023.3	-10,160.1	3,345.2	10,673.5	0.64	
17,747.0	90.50	161.41	7,023.0	-10,194.3	3,356.6	10,709.5	0.58	
17,779.0	90.60	161.09	7,022.7	-10,224.6	3,366.9	10,741.4	1.05	

RECEIVED
Office of Oil and Gas

JUL 13 2015

WV Department of
Environmental Protection

Company:	Antero Resources	Local Co-ordinate Reference:	Well Hoskinson Unit 1H
Project:	Doddridge County WV	TVD Reference:	Frontier 22: 1115' GL + 25' RKB @ 1140.0usft
Site:	Mishka/McMillan/Hoskinson Pad	MD Reference:	Frontier 22: 1115' GL + 25' RKB @ 1140.0usft
Well:	Hoskinson Unit 1H	North Reference:	Grid
Wellbore:	Original Wellpath	Survey Calculation Method:	Minimum Curvature
Design:	As Drilled	Database:	Oklahoma District

Design Annotations				
Measured Depth (usft)	Vertical Depth (usft)	Local Coordinates		Comment
		+N/-S (usft)	+E/-W (usft)	
6,572.0	6,540.9	-145.6	-77.9	Sycamore
6,870.0	6,736.3	-189.2	-294.7	Middlesex
7,101.0	6,875.8	-324.7	-415.3	Burkett
7,153.0	6,903.1	-365.2	-433.1	Tully
7,300.0	6,964.9	-494.4	-463.4	Marcellus

Checked By: _____ Approved By: _____ Date: _____

RECEIVED
Office of Oil and Gas

JUL 13 2015

WV Department of
Environmental Protection