



EQT Production - Marcellus

Doddridge County, WV Grid

Doddridge County 512479

Well #512479

API #47-170-06393

Main Wellbore

Design: As Drilled Surveys

Standard Survey Report

18 November, 2014

Received
Office of Oil & Gas
NOV 19 2015

Database:	EDM 5000.1 Single User Db	Local Co-ordinate Reference:	Site: Doddridge County 512479
Company:	EQT Production - Marcellus	TVD Reference:	KB @ 1263.0usft
Project:	Doddridge County, WV Grid	MD Reference:	KB @ 1263.0usft
Site:	Doddridge County 512479	North Reference:	Grid
Well:	Well #512479	Survey Calculation Method:	Minimum Curvature
Wellbore:	Main Wellbore		
Design:	As Drilled Surveys		

Project: Doddridge County WV Grid			
Map System:	US State Plane 1927 (Exact solution)	System Datum:	Mean Sea Level
Geo Datum:	NAD 1927 (NADCON CONUS)		
Map Zone:	West Virginia North 4701		Using geodetic scale factor

Site: Doddridge County 512479			
Site Position:		Northing:	265,349.70 usft
From:	Map	Easting:	1,631,427.00 usft
Position Uncertainty:	0.0 usft	Slot Radius:	13-3/16 "
		Latitude:	39.22
		Longitude:	-80.80
		Grid Convergence:	-0.83 °

Well: Well #512479			
Well Position	+N/-S	0.0 usft	Northing: 265,349.70 usft
	+E/-W	0.0 usft	Easting: 1,631,427.00 usft
Position Uncertainty		0.0 usft	Wellhead Elevation: usft
			Latitude: 39° 13' 16.372 N
			Longitude: 80° 48' 3.475 W
			Ground Level: 1,240.0 usft

Wellbore: Main Wellbore					
Magnetics	Model Name	Sample Date	Declination (°)	Dip Angle (°)	Field Strength (nT)
	IGRF2010_14	11/3/2014	-8.46	66.72	52,213

Design: As Drilled Surveys					
Audit Notes:					
Version:	1.0	Phase:	ACTUAL	Tie On Depth:	0.0
Vertical Section:	Depth From (TVD) (usft)	+N/-S (usft)	+E/-W (usft)	Direction (°)	
	0.0	0.0	0.0	315.47	

Received
Office of Oil & Gas
NOV 19 2015

Survey Program		Date	11/18/2014			
From (')	To (usft)	Survey (Wellbore)	Tool Name	Description		
0.00	5,204.1	512479 Gyrodata Gyros (Main Wellbore)	GYD_DP_MS	Gyrodata gyro-compassing and drop		
0.00	9,663.0	512479 PHX MWD (Curve and Lat) (Main W	MWD+IGRF	MWD+IGRF v3:standard declination		

Measured Depth (usft)	Inclination (°)	Azimuth (°)	Vertical Depth (usft)	Subsea Depth (usft)	+N/-S (usft)	+E/-W (usft)	Vertical Section (usft)	Dogleg Rate (°/100usft)	Build Rate (°/100usft)	Turn Rate (°/100usft)
0.0	0.00	0.00	0.0	-1,263.0	0.0	0.0	0.0	0.00	0.00	0.00
110.0	0.16	183.38	110.0	-1,153.0	-0.2	0.0	-0.1	0.15	0.15	0.00
210.0	0.12	193.97	210.0	-1,053.0	-0.4	0.0	-0.3	0.05	-0.04	10.59
310.0	0.13	172.29	310.0	-953.0	-0.6	-0.1	-0.4	0.05	0.01	-21.68
410.0	0.20	150.28	410.0	-853.0	-0.9	0.0	-0.7	0.09	0.07	-22.01
510.0	0.19	141.57	510.0	-753.0	-1.2	0.2	-1.0	0.03	-0.01	-8.71
610.0	0.27	144.40	610.0	-653.0	-1.5	0.5	-1.4	0.08	0.08	2.83
710.0	0.23	139.79	710.0	-553.0	-1.8	0.7	-1.8	0.04	-0.04	-4.61

Database:	EDM 8000.1 Single User DC	Local Co-ordinate Reference:	Site Doddridge County 512479
Company:	EQT Production - Marcellus	TVD Reference:	KB @ 1283.0usft
Project:	Doddridge County WV Grid	MD Reference:	KB @ 1283.0usft
Site:	Doddridge County 512479	North Reference:	Grid
Well:	Well #512479	Survey Calculation Method:	Minimum Curvature
Wellbore:	Main Wellbore		
Design:	As Drilled Surveys		

Survey											
Measured Depth (usft)	Inclination (°)	Azimuth (°)	Vertical Depth (usft)	Subsea Depth (usft)	+N/-S (usft)	+E/-W (usft)	Vertical Section (usft)	Dogleg Rate (°/100usft)	Build Rate (°/100usft)	Turn Rate (°/100usft)	
810.0	0.24	139.72	810.0	-453.0	-2.1	1.0	-2.2	0.01	0.01	-0.07	
910.0	0.27	141.96	910.0	-353.0	-2.5	1.3	-2.7	0.03	0.03	2.24	
1,010.0	0.61	136.79	1,010.0	-253.0	-3.1	1.8	-3.4	0.34	0.34	-5.17	
1,110.0	0.38	35.38	1,110.0	-153.0	-3.2	2.4	-3.9	0.78	-0.23	-101.41	
1,210.0	1.88	347.40	1,210.0	-53.0	-1.3	2.2	-2.5	1.65	1.50	-47.98	
1,310.0	4.37	337.08	1,309.8	46.8	3.8	0.3	2.5	2.54	2.49	-10.32	
1,410.0	6.17	333.84	1,409.4	146.4	12.1	-3.5	11.1	1.82	1.80	-3.24	
1,510.0	6.59	332.63	1,508.8	245.8	22.1	-8.5	21.7	0.44	0.42	-1.21	
1,610.0	5.49	326.53	1,608.2	345.2	31.2	-13.8	31.9	1.27	-1.10	-6.10	
1,710.0	2.80	314.44	1,707.9	444.9	36.9	-18.2	39.0	2.81	-2.69	-12.09	
1,810.0	1.02	298.17	1,807.9	544.9	39.0	-20.7	42.3	1.84	-1.78	-16.27	
1,910.0	0.88	295.52	1,907.9	644.9	39.7	-22.2	43.9	0.15	-0.14	-2.65	
2,010.0	0.76	288.30	2,007.9	744.9	40.3	-23.5	45.2	0.16	-0.12	-7.22	
2,110.0	0.78	288.24	2,107.8	844.8	40.7	-24.8	46.4	0.02	0.02	-0.06	
2,210.0	0.60	281.64	2,207.8	944.8	41.0	-25.9	47.4	0.20	-0.18	-6.60	
2,310.0	0.66	279.28	2,307.8	1,044.8	41.2	-27.0	48.3	0.07	0.06	-2.36	
2,410.0	0.68	272.52	2,407.8	1,144.8	41.3	-28.2	49.2	0.08	0.02	-6.76	
2,510.0	0.71	271.40	2,507.8	1,244.8	41.4	-29.4	50.1	0.03	0.03	-1.12	
2,610.0	0.72	267.99	2,607.8	1,344.8	41.4	-30.6	51.0	0.04	0.01	-3.41	
2,710.0	0.69	270.52	2,707.8	1,444.8	41.3	-31.9	51.8	0.04	-0.03	2.53	
2,810.0	0.60	270.76	2,807.8	1,544.8	41.4	-33.0	52.6	0.09	-0.09	0.24	
2,910.0	0.37	266.38	2,907.8	1,644.8	41.3	-33.8	53.2	0.23	-0.23	-4.38	
3,010.0	0.38	273.38	3,007.8	1,744.8	41.3	-34.5	53.7	0.05	0.01	7.00	
3,110.0	0.36	274.63	3,107.8	1,844.8	41.4	-35.1	54.1	0.02	-0.02	1.25	
3,210.0	0.33	301.18	3,207.8	1,944.8	41.6	-35.7	54.7	0.16	-0.03	26.55	
3,310.0	0.30	306.76	3,307.8	2,044.8	41.9	-36.2	55.2	0.04	-0.03	5.58	
3,410.0	0.23	319.35	3,407.8	2,144.8	42.2	-36.5	55.7	0.09	-0.07	12.59	
3,510.0	0.18	341.92	3,507.8	2,244.8	42.5	-36.7	56.0	0.09	-0.05	22.57	
3,610.0	0.12	30.32	3,607.8	2,344.8	42.7	-36.7	56.2	0.13	-0.06	48.40	
3,710.0	0.11	41.00	3,707.8	2,444.8	42.9	-36.6	56.2	0.02	-0.01	10.68	
3,810.0	0.16	48.87	3,807.8	2,544.8	43.0	-36.4	56.2	0.05	0.05	7.87	
3,910.0	0.66	349.86	3,907.8	2,644.8	43.7	-36.4	56.7	0.59	0.50	-59.01	
4,010.0	0.83	287.26	4,007.8	2,744.8	44.5	-37.2	57.8	0.79	0.17	-62.60	
4,110.0	0.97	293.23	4,107.8	2,844.8	45.0	-38.6	59.2	0.17	0.14	5.97	
4,210.0	1.17	292.44	4,207.7	2,944.7	45.8	-40.4	60.9	0.20	0.20	-0.79	
4,310.0	1.30	294.15	4,307.7	3,044.7	46.6	-42.3	62.9	0.14	0.13	1.71	
4,410.0	1.34	298.92	4,407.7	3,144.7	47.6	-44.4	65.1	0.12	0.04	4.77	
4,510.0	1.45	299.27	4,507.7	3,244.7	48.8	-46.5	67.4	0.11	0.11	0.35	
4,610.0	1.63	301.30	4,607.6	3,344.6	50.2	-48.8	70.0	0.19	0.18	2.03	
4,710.0	1.63	302.78	4,707.6	3,444.6	51.7	-51.3	72.8	0.04	0.00	1.48	
4,810.0	1.61	303.05	4,807.6	3,544.6	53.2	-53.6	75.6	0.02	-0.02	0.27	
4,910.0	1.41	309.41	4,907.5	3,644.5	54.8	-55.8	78.2	0.26	-0.20	6.36	

Received
Office of Oil & Gas
NOV 19 2015

Database:	EDM 5000.1 Single User Db	Local Co-ordinate Reference:	Site Doddridge County 512478
Company:	EQT Production - Marcellus	TVD Reference:	KB @ 1283.0usft
Project:	Doddridge County, WV Grid	MD Reference:	KB @ 1283.0usft
Site:	Doddridge County 512478	North Reference:	Grid
Well:	Well #512478	Survey Calculation Method:	Minimum Curvature
Wellbore:	Main Wellbore		
Design:	As Drilled Surveys		

Survey											
Measured Depth (usft)	Inclination (°)	Azimuth (°)	Vertical Depth (usft)	Subsea Depth (usft)	+N/-S (usft)	+E/-W (usft)	Vertical Section (usft)	Dogleg Rate (°/100usft)	Build Rate (°/100usft)	Turn Rate (°/100usft)	
5,010.0	1.24	312.28	5,007.5	3,744.5	56.3	-57.5	80.5	0.18	-0.17	2.87	
5,110.0	1.13	308.90	5,107.5	3,844.5	57.6	-59.1	82.5	0.13	-0.11	-3.38	
Gyro Tie In=520.4' MD											
5,204.1	1.25	302.86	5,201.5	3,938.5	58.8	-60.7	84.4	0.18	0.13	-6.42	
5,280.0	1.40	298.20	5,277.4	4,014.4	59.7	-62.2	86.1	0.24	0.20	-6.14	
5,312.0	1.50	300.20	5,309.4	4,046.4	60.1	-62.9	86.9	0.35	0.31	6.25	
5,343.0	1.10	302.50	5,340.4	4,077.4	60.4	-63.5	87.6	1.30	-1.29	7.42	
5,375.0	1.90	273.50	5,372.4	4,109.4	60.6	-64.3	88.3	3.37	2.50	-90.63	
5,406.0	4.00	248.80	5,403.4	4,140.4	60.3	-65.8	89.1	7.77	6.77	-79.68	
5,437.0	5.80	244.70	5,434.2	4,171.2	59.2	-68.2	90.0	5.91	5.81	-13.23	
5,469.0	7.20	245.70	5,466.0	4,203.0	57.7	-71.5	91.3	4.39	4.38	3.13	
5,500.0	9.30	242.50	5,496.7	4,233.7	55.7	-75.5	92.7	6.93	6.77	-10.32	
5,531.0	11.70	237.40	5,527.2	4,264.2	52.9	-80.4	94.1	8.29	7.74	-16.45	
5,563.0	14.20	234.30	5,558.4	4,295.4	48.8	-86.3	95.3	8.11	7.81	-9.69	
5,595.0	16.10	236.40	5,589.3	4,326.3	44.1	-93.2	96.8	6.18	5.94	6.56	
5,626.0	18.20	237.70	5,618.9	4,355.9	39.1	-100.8	98.6	6.89	6.77	4.19	
5,658.0	20.60	238.60	5,649.1	4,386.1	33.5	-109.9	101.0	7.56	7.50	2.81	
5,690.0	23.00	239.20	5,678.8	4,415.8	27.4	-120.1	103.7	7.53	7.50	1.88	
5,721.0	25.60	238.80	5,707.0	4,444.0	20.8	-131.0	106.7	8.40	8.39	-1.29	
5,752.0	28.20	238.00	5,734.7	4,471.7	13.5	-142.9	109.8	8.47	8.39	-2.58	
5,784.0	31.30	238.20	5,762.4	4,499.4	5.1	-156.4	113.3	9.69	9.69	0.63	
5,815.0	34.40	238.60	5,788.5	4,525.5	-3.7	-170.7	117.1	10.02	10.00	1.29	
5,846.0	37.60	238.50	5,813.6	4,550.6	-13.2	-186.3	121.2	10.32	10.32	-0.32	
5,877.0	41.00	238.60	5,837.5	4,574.5	-23.5	-203.0	125.6	10.97	10.97	0.32	
5,940.0	43.40	240.40	5,884.2	4,621.2	-44.9	-239.5	135.9	4.27	3.81	2.86	
6,034.0	43.70	239.90	5,952.3	4,689.3	-77.2	-295.7	152.3	0.49	0.32	0.69	
6,129.0	43.00	239.30	6,021.4	4,758.4	-110.2	-351.9	168.3	0.85	-0.74	-0.63	
6,223.0	42.40	238.30	6,090.5	4,827.5	-143.2	-406.4	183.0	0.96	-0.64	-1.06	
6,317.0	41.40	236.40	6,160.5	4,897.5	-177.1	-459.3	195.9	1.72	-1.06	-2.02	
6,412.0	43.00	245.00	6,230.9	4,967.9	-208.2	-514.9	212.7	6.31	1.68	9.05	
6,444.0	44.40	252.40	6,254.1	4,991.1	-216.2	-535.4	221.4	16.56	4.38	23.13	
6,475.0	44.80	257.80	6,276.1	5,013.1	-221.7	-556.5	232.2	12.30	1.29	17.42	
6,507.0	44.60	261.30	6,298.9	5,035.9	-225.8	-578.6	244.8	7.72	-0.63	10.94	
6,538.0	44.70	265.70	6,321.0	5,058.0	-228.3	-600.2	258.2	9.98	0.32	14.19	
6,569.0	45.60	269.70	6,342.8	5,079.8	-229.2	-622.2	273.0	9.60	2.90	12.90	
6,601.0	46.20	271.30	6,365.1	5,102.1	-229.0	-645.2	289.3	4.05	1.88	5.00	
6,632.0	46.80	274.00	6,386.4	5,123.4	-227.9	-667.6	305.7	6.61	1.94	8.71	
6,663.0	47.60	277.50	6,407.5	5,144.5	-225.6	-690.2	323.2	8.68	2.58	11.29	
6,695.0	48.10	280.80	6,429.0	5,166.0	-221.9	-713.6	342.4	7.80	1.56	10.31	
6,726.0	48.40	284.20	6,449.6	5,186.6	-216.9	-736.2	361.7	8.24	0.97	10.97	
6,758.0	49.40	286.00	6,470.7	5,207.7	-210.6	-759.5	382.6	5.27	3.13	5.63	
6,789.0	50.20	287.90	6,490.7	5,227.7	-203.7	-782.1	403.4	5.35	2.58	6.13	
6,821.0	50.40	290.70	6,511.1	5,248.1	-195.5	-805.4	425.5	6.76	0.63	8.75	

Received
Office of Oil & Gas
NOV 19 2015

Database:	EDM 5000.1 Single User Db	Local Co-ordinate Reference:	Site Doddridge County 512479
Company:	EQT Production - Marcellus	TVD Reference:	KB @ 1263.0usft
Project:	Doddridge County WV Grid	MD Reference:	KB @ 1263.0usft
Site:	Doddridge County 512478	North Reference:	Grid
Well:	Well #512479	Survey Calculation Method:	Minimum Curvature
Wellbore:	Main Wellbore		
Design:	As Drilled Surveys		

Survey										
Measured Depth (usft)	Inclination (°)	Azimuth (°)	Vertical Depth (usft)	Subsea Depth (usft)	+N/-S (usft)	+E/-W (usft)	Vertical Section (usft)	Dogleg Rate (°/100usft)	Build Rate (°/100usft)	Turn Rate (°/100usft)
6,852.0	51.60	293.40	6,530.6	5,267.6	-186.5	-827.7	447.6	7.80	3.87	8.71
6,884.0	53.50	296.00	6,550.1	5,287.1	-175.9	-850.8	471.3	8.77	5.94	8.13
6,915.0	54.80	299.10	6,568.2	5,305.2	-164.2	-873.0	495.2	9.13	4.19	10.00
6,947.0	56.40	301.80	6,586.3	5,323.3	-150.9	-895.8	520.7	8.57	5.00	8.44
6,978.0	58.10	304.20	6,603.1	5,340.1	-136.7	-917.7	546.2	8.51	5.48	7.74
7,009.0	60.20	307.50	6,619.0	5,356.0	-121.1	-939.2	572.4	11.37	6.77	10.65
7,041.0	61.90	310.20	6,634.5	5,371.5	-103.5	-961.0	600.2	9.10	5.31	8.44
7,072.0	63.40	312.20	6,648.7	5,385.7	-85.4	-981.7	627.7	7.50	4.84	6.45
7,104.0	65.50	315.00	6,662.5	5,399.5	-65.5	-1,002.6	656.5	10.27	6.56	8.75
7,135.0	68.40	316.90	6,674.7	5,411.7	-45.0	-1,022.5	685.0	10.92	9.35	6.13
7,166.0	71.00	317.80	6,685.4	5,422.4	-23.6	-1,042.2	714.1	8.82	8.39	2.90
7,198.0	73.50	320.00	6,695.2	5,432.2	-0.6	-1,062.2	744.5	10.19	7.81	6.88
7,229.0	75.20	322.60	6,703.5	5,440.5	22.7	-1,080.8	774.2	9.76	5.48	8.39
7,260.0	76.40	324.70	6,711.1	5,448.1	46.9	-1,098.7	803.9	7.62	3.87	6.77
7,292.0	76.90	327.90	6,718.5	5,455.5	72.8	-1,115.9	834.5	9.85	1.56	10.00
7,323.0	78.60	330.10	6,725.1	5,462.1	98.8	-1,131.5	864.0	8.84	5.48	7.10
7,355.0	80.40	331.50	6,730.9	5,467.9	126.2	-1,146.9	894.3	7.08	5.63	4.38
7,386.0	82.80	332.10	6,735.5	5,472.5	153.2	-1,161.4	923.7	7.98	7.74	1.94
7,417.0	85.10	331.50	6,738.7	5,475.7	180.4	-1,175.9	953.3	7.66	7.42	-1.94
7,449.0	86.60	331.50	6,741.1	5,478.1	208.5	-1,191.2	984.0	4.69	4.69	0.00
7,543.0	87.60	331.40	6,745.8	5,482.8	290.9	-1,236.0	1,074.2	1.07	1.06	-0.11
7,638.0	87.00	334.80	6,750.3	5,487.3	375.5	-1,279.0	1,164.7	3.63	-0.63	3.58
LP#732 MD 0753' TVD										
7,732.0	89.80	333.20	6,752.9	5,489.9	460.0	-1,320.1	1,253.7	3.43	2.98	-1.70
7,826.0	89.10	330.90	6,753.8	5,490.8	543.0	-1,364.2	1,343.8	2.56	-0.74	-2.45
7,921.0	89.70	333.90	6,754.8	5,491.8	627.2	-1,408.2	1,434.7	3.22	0.63	3.16
8,015.0	90.10	334.90	6,755.0	5,492.0	712.0	-1,448.8	1,523.6	1.15	0.43	1.06
8,109.0	90.70	333.90	6,754.3	5,491.3	796.7	-1,489.4	1,612.5	1.24	0.64	-1.06
8,204.0	91.60	333.60	6,752.4	5,489.4	881.9	-1,531.4	1,702.7	1.00	0.95	-0.32
8,298.0	89.30	335.70	6,751.7	5,488.7	966.8	-1,571.7	1,791.5	3.31	-2.45	2.23
8,392.0	87.70	337.00	6,754.1	5,491.1	1,052.9	-1,609.4	1,879.3	2.19	-1.70	1.38
8,487.0	86.10	337.70	6,759.3	5,496.3	1,140.5	-1,645.9	1,967.3	1.84	-1.68	0.74
8,581.0	87.10	337.70	6,764.8	5,501.8	1,227.3	-1,681.5	2,054.1	1.06	1.06	0.00
8,676.0	86.20	335.90	6,770.4	5,507.4	1,314.4	-1,718.9	2,142.5	2.12	-0.95	-1.89
8,771.0	86.30	335.30	6,776.6	5,513.6	1,400.8	-1,758.0	2,231.5	0.64	0.11	-0.63
8,865.0	86.90	335.20	6,782.2	5,519.2	1,486.0	-1,797.3	2,319.8	0.65	0.64	-0.11
8,960.0	90.30	334.50	6,784.5	5,521.5	1,571.9	-1,837.7	2,409.3	3.65	3.58	-0.74
9,054.0	91.70	335.10	6,782.9	5,519.9	1,657.0	-1,877.7	2,498.0	1.62	1.49	0.64
9,149.0	91.90	333.30	6,779.9	5,516.9	1,742.5	-1,919.0	2,587.9	1.91	0.21	-1.89
9,243.0	92.60	333.30	6,776.2	5,513.2	1,826.4	-1,961.2	2,677.4	0.74	0.74	0.00
9,338.0	91.40	332.90	6,772.9	5,509.9	1,911.0	-2,004.2	2,767.8	1.33	-1.26	-0.42
9,432.0	92.50	333.10	6,769.7	5,506.7	1,994.7	-2,046.8	2,857.4	1.19	1.17	0.21
9,527.0	93.10	332.20	6,765.0	5,502.0	2,079.0	-2,090.4	2,948.1	1.14	0.63	-0.95

Received
Office of Oil &
NOV 19 2015



Phoenix
Survey Report



Database:	EDM 5000.1 Single User Db	Local Co-ordinate Reference:	Site Doddridge County 512479
Company:	EQT Production - Marcellus	TVD Reference:	KB @ 1253.0usft
Project:	Doddridge County, WV Grid	MD Reference:	KB @ 1253.0usft
Site:	Doddridge County 512479	North Reference:	Grid
Well:	Well #512479	Survey Calculation Method:	Minimum Curvature
Wellbore:	Main Wellbore		
Design:	As Drilled Surveys		

Measured Depth (usft)	Inclination (°)	Azimuth (°)	Vertical Depth (usft)	Subsea Depth (usft)	+N/-S (usft)	+E/-W (usft)	Vertical Section (usft)	Dogleg Rate (°/100usft)	Build Rate (°/100usft)	Turn Rate (°/100usft)
Final Survey=9606' MD/ 6760' TVD										
9,606.0	94.20	332.60	6,760.0	5,497.0	2,148.9	-2,126.9	3,023.5	1.48	1.39	0.51
Projection to TD=9663' MD/ 6756' TVD										
9,663.0	94.20	332.60	6,755.8	5,492.8	2,199.4	-2,153.1	3,077.8	0.00	0.00	0.00

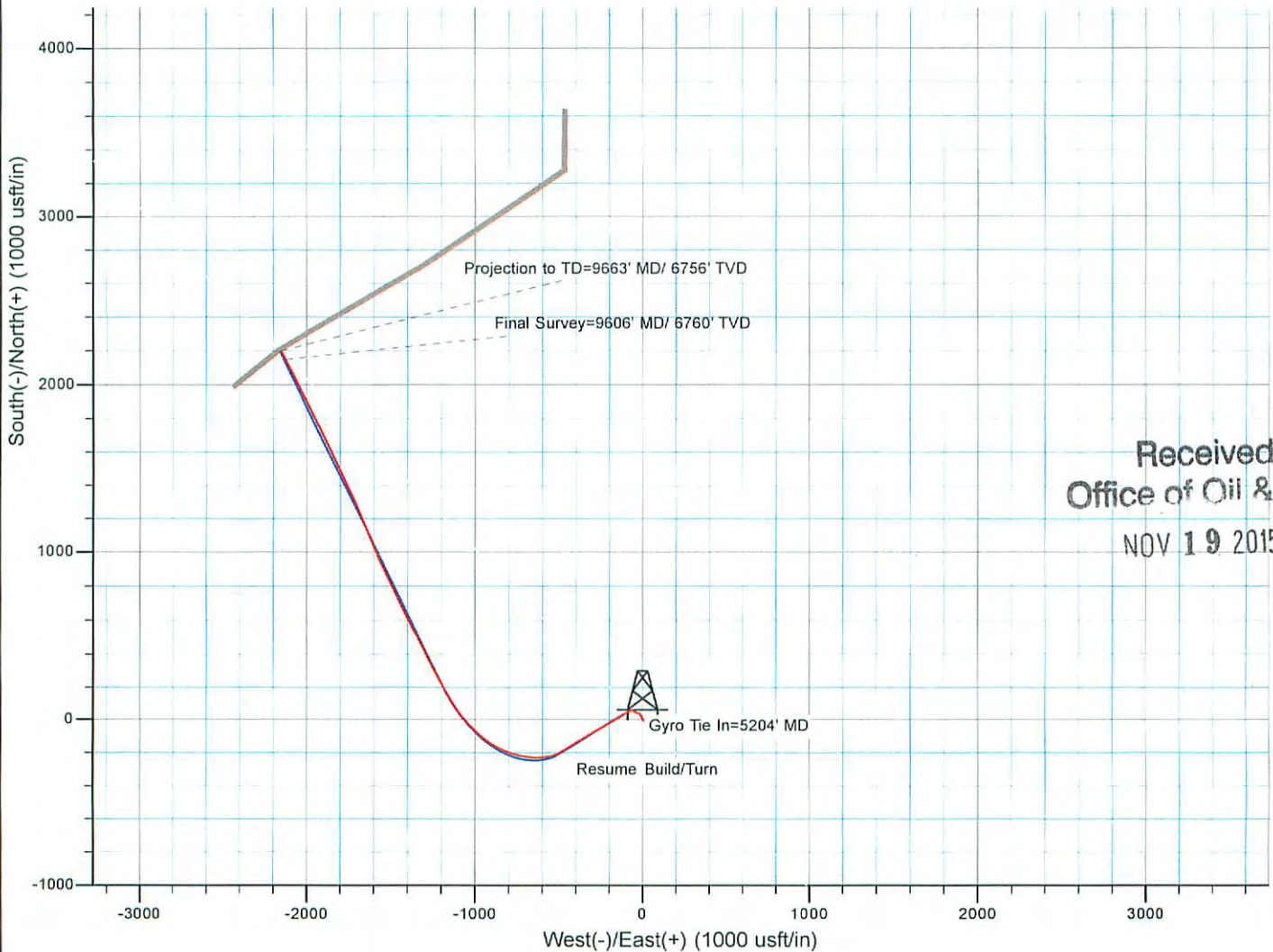
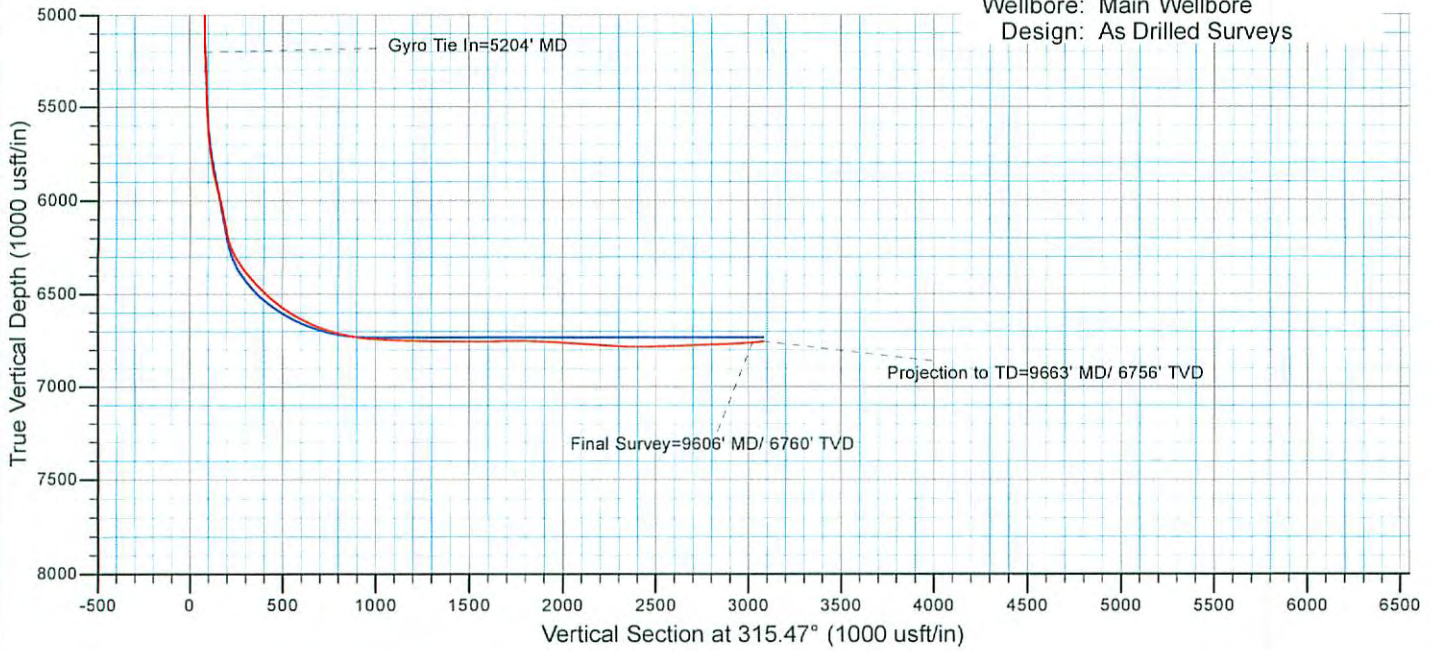
Measured Depth (usft)	Vertical Depth (usft)	Local Coordinates		Comment
		+N/-S (usft)	+E/-W (usft)	
5,204.1	5,201.5	58.8	-60.7	Gyro Tie In=5204' MD
7,732.0	6,752.9	460.0	-1,320.1	LP=7732' MD/ 6753' TVD
9,606.0	6,760.0	2,148.9	-2,126.9	Final Survey=9606' MD/ 6760' TVD
9,663.0	6,755.8	2,199.4	-2,153.1	Projection to TD=9663' MD/ 6756' TVD

Checked By: _____ Approved By: _____ Date: _____

Received
Office of Oil & Gas
NOV 19 2015



Project: Doddridge County, WV Grid
 Site: Doddridge County 512479
 Well: Well #512479
 Wellbore: Main Wellbore
 Design: As Drilled Surveys



Received
 Office of Oil & Gas
 NOV 19 2015