



EQT Production - Marcellus

Doddridge County, WV Grid

Doddridge County 512478

Well #512478

Main Wellbore

Design: 512478 As Drilled Surveys

Standard Survey Report

14 November, 2014

RECEIVED
Office of Oil and Gas

JUL 31 2015

WV Department of
Environmental Protection



Where energy meets innovation.

08/21/2015



Phoenix
Survey Report



Database:	EDM 5000.1 Single User Db	Local Co-ordinate Reference:	Site Doddridge County 512478
Company:	EQT Production - Marcellus	TVD Reference:	KB @ 1263.0usft
Project:	Doddridge County, WV Grid	MD Reference:	KB @ 1263.0usft
Site:	Doddridge County 512478	North Reference:	Grid
Well:	Well #512478	Survey Calculation Method:	Minimum Curvature
Wellbore:	Main Wellbore		
Design:	512478 As Drilled Surveys		

Project Doddridge County, WV Grid

Map System:	US State Plane 1927 (Exact solution)	System Datum:	Mean Sea Level
Geo Datum:	NAD 1927 (NADCON CONUS)		
Map Zone:	West Virginia North 4701		Using geodetic scale factor

Site Doddridge County 512478

Site Position:		Northing:	265,331.00 usft	Latitude:	39.22
From:	Map	Easting:	1,631,403.80 usft	Longitude:	-80.80
Position Uncertainty:	0.0 usft	Slot Radius:	13-3/16 "	Grid Convergence:	-0.83 °

Well Well #512478

Well Position	+N/-S	0.0 usft	Northing:	265,331.00 usft	Latitude:	39° 13' 16.183 N
	+E/-W	0.0 usft	Easting:	1,631,403.80 usft	Longitude:	80° 48' 3.766 W
Position Uncertainty		0.0 usft	Wellhead Elevation:	usft	Ground Level:	1,240.0 usft

Wellbore Main Wellbore

Magnetics	Model Name	Sample Date	Declination (°)	Dip Angle (°)	Field Strength (nT)
	IGRF2010_14	10/20/2014	-8.46	66.73	52,218

Design 512478 As Drilled Surveys

Audit Notes:

Version:	1.0	Phase:	ACTUAL	Tie On Depth:	0.0
-----------------	-----	---------------	--------	----------------------	-----

Vertical Section:	Depth From (TVD) (usft)	+N/-S (usft)	+E/-W (usft)	Direction (°)
	0.0	0.0	0.0	335.00

Survey Program Date 11/14/2014

From (')	To (usft)	Survey (Wellbore)	Tool Name	Description
0.00	5,472.0	512478 Gyrodata Gyros (Main Wellbore)	GYD_DP_MS	Gyrodata gyro-compassing and drop
0.00	9,572.0	512478 PHX MWD (Main Wellbore)	MWD+IGRF	MWD+IGRF v3:standard declination

Survey

Measured Depth (usft)	Inclination (°)	Azimuth (°)	Vertical Depth (usft)	Subsea Depth (usft)	+N/-S (usft)	+E/-W (usft)	Vertical Section (usft)	Dogleg Rate (°/100usft)	Build Rate (°/100usft)	Turn Rate (°/100usft)
0.0	0.00	0.00	0.0	-1,263.0	0.0	0.0	0.0	0.00	0.00	0.00
110.0	0.59	104.24	110.0	-1,153.0	-0.1	0.5	-0.4	0.54	0.54	0.00
210.0	0.59	115.05	210.0	-1,053.0	-0.5	1.5	-1.1	0.11	0.00	10.81
310.0	0.46	128.20	310.0	-953.0	-1.0	2.3	-1.8	0.18	-0.13	13.15
410.0	0.34	131.89	410.0	-853.0	-1.4	2.8	-2.5	0.12	-0.12	3.69
510.0	0.30	131.67	510.0	-753.0	-1.8	3.2	-3.0	0.04	-0.04	-0.22
610.0	0.37	128.29	610.0	-653.0	-2.1	3.7	-3.5	0.07	0.07	3.98
710.0	0.36	138.49	710.0	-553.0	-2.6	4.2	-4.1	0.07	-0.01	10.20

RECEIVED
Office of Oil and Gas
JUL 31 2015
WV Department of Environmental Protection



Phoenix
Survey Report



Database:	EDM 5000.1 Single User Db	Local Co-ordinate Reference:	Site Doddridge County 512478
Company:	EQT Production - Marcellus	TVD Reference:	KB @ 1263.0usft
Project:	Doddridge County, WV Grid	MD Reference:	KB @ 1263.0usft
Site:	Doddridge County 512478	North Reference:	Grid
Well:	Well #512478	Survey Calculation Method:	Minimum Curvature
Wellbore:	Main Wellbore		
Design:	512478 As Drilled Surveys		

Survey										
Measured Depth (usft)	Inclination (°)	Azimuth (°)	Vertical Depth (usft)	Subsea Depth (usft)	+N/-S (usft)	+E/-W (usft)	Vertical Section (usft)	Dogleg Rate (°/100usft)	Build Rate (°/100usft)	Turn Rate (°/100usft)
810.0	0.32	145.27	810.0	-453.0	-3.0	4.5	-4.7	0.06	-0.04	6.78
910.0	0.34	140.55	910.0	-353.0	-3.5	4.9	-5.2	0.03	0.02	-4.72
1,010.0	0.36	159.15	1,010.0	-253.0	-4.0	5.2	-5.8	0.11	0.02	18.60
1,110.0	0.41	174.15	1,110.0	-153.0	-4.7	5.3	-6.5	0.11	0.05	15.00
1,210.0	0.45	172.49	1,210.0	-53.0	-5.4	5.4	-7.2	0.04	0.04	-1.66
1,310.0	0.41	184.11	1,310.0	47.0	-6.2	5.4	-7.9	0.10	-0.04	11.62
1,410.0	0.40	183.54	1,410.0	147.0	-6.9	5.4	-8.5	0.01	-0.01	-0.57
1,510.0	0.41	187.47	1,510.0	247.0	-7.6	5.3	-9.1	0.03	0.01	3.93
1,610.0	0.49	165.61	1,610.0	347.0	-8.3	5.4	-9.8	0.19	0.08	-21.86
1,710.0	0.76	146.47	1,710.0	447.0	-9.3	5.9	-10.9	0.34	0.27	-19.14
1,810.0	0.79	143.68	1,809.9	546.9	-10.4	6.6	-12.2	0.05	0.03	-2.79
1,910.0	0.69	143.99	1,909.9	646.9	-11.5	7.4	-13.5	0.10	-0.10	0.31
2,010.0	0.46	155.19	2,009.9	746.9	-12.3	7.9	-14.5	0.25	-0.23	11.20
2,110.0	0.50	157.38	2,109.9	846.9	-13.1	8.2	-15.3	0.04	0.04	2.19
2,210.0	0.44	162.80	2,209.9	946.9	-13.8	8.5	-16.2	0.07	-0.06	5.42
2,310.0	0.51	168.99	2,309.9	1,046.9	-14.7	8.7	-17.0	0.09	0.07	6.19
2,410.0	0.31	165.17	2,409.9	1,146.9	-15.4	8.9	-17.7	0.20	-0.20	-3.82
2,510.0	0.30	174.85	2,509.9	1,246.9	-15.9	9.0	-18.2	0.05	-0.01	9.68
2,610.0	0.19	175.89	2,609.9	1,346.9	-16.3	9.0	-18.6	0.11	-0.11	1.04
2,710.0	0.09	186.64	2,709.9	1,446.9	-16.5	9.0	-18.8	0.10	-0.10	10.75
2,810.0	0.18	151.71	2,809.9	1,546.9	-16.8	9.1	-19.0	0.12	0.09	-34.93
2,910.0	0.15	179.89	2,909.9	1,646.9	-17.0	9.2	-19.3	0.09	-0.03	28.18
3,010.0	0.14	193.54	3,009.9	1,746.9	-17.3	9.1	-19.5	0.04	-0.01	13.65
3,110.0	0.09	155.86	3,109.9	1,846.9	-17.5	9.1	-19.7	0.09	-0.05	-37.68
3,210.0	0.18	170.57	3,209.9	1,946.9	-17.7	9.2	-19.9	0.10	0.09	14.71
3,310.0	0.15	166.21	3,309.9	2,046.9	-18.0	9.2	-20.2	0.03	-0.03	-4.36
3,410.0	0.20	136.24	3,409.9	2,146.9	-18.2	9.4	-20.5	0.10	0.05	-29.97
3,510.0	0.30	138.10	3,509.9	2,246.9	-18.6	9.7	-20.9	0.10	0.10	1.86
3,610.0	0.17	142.42	3,609.9	2,346.9	-18.9	10.0	-21.3	0.13	-0.13	4.32
3,710.0	0.16	105.24	3,709.9	2,446.9	-19.0	10.2	-21.5	0.11	-0.01	-37.18
3,810.0	0.13	123.41	3,809.9	2,546.9	-19.1	10.4	-21.7	0.05	-0.03	18.17
3,910.0	0.25	317.59	3,909.9	2,646.9	-19.0	10.4	-21.6	0.38	0.12	165.82
4,010.0	0.91	278.26	4,009.9	2,746.9	-18.7	9.4	-21.0	0.73	0.66	99.04
4,110.0	1.16	271.32	4,109.9	2,846.9	-18.6	7.6	-20.1	0.28	0.25	-6.94
4,210.0	1.50	279.85	4,209.9	2,946.9	-18.4	5.3	-18.9	0.39	0.34	8.53
4,310.0	1.67	283.80	4,309.8	3,046.8	-17.8	2.6	-17.2	0.20	0.17	3.98
4,410.0	1.64	287.84	4,409.8	3,146.8	-17.0	-0.2	-15.3	0.12	-0.03	4.04
4,510.0	1.77	290.47	4,509.7	3,246.7	-16.0	-3.0	-13.3	0.15	0.13	2.53
4,610.0	1.69	296.58	4,609.7	3,346.7	-14.8	-5.7	-11.0	0.20	-0.04	4.11
4,710.0	1.71	294.89	4,709.6	3,446.6	-13.5	-8.4	-8.7	0.05	0.02	-1.69
4,810.0	1.61	299.82	4,809.6	3,546.6	-12.2	-11.0	-6.4	0.17	-0.10	4.93
4,910.0	1.48	299.56	4,909.6	3,646.6	-10.9	-13.3	-4.2	0.13	-0.13	-0.26

RECEIVED
Office of Oil and Gas
JUL 31 2015
WV Department of Environmental Protection

Database:	EDM 5000.1 Single User Db	Local Co-ordinate Reference:	Site Doddridge County 512478
Company:	EQT Production - Marcellus	TVD Reference:	KB @ 1263.0usft
Project:	Doddridge County, WV Grid	MD Reference:	KB @ 1263.0usft
Site:	Doddridge County 512478	North Reference:	Grid
Well:	Well #512478	Survey Calculation Method:	Minimum Curvature
Wellbore:	Main Wellbore		
Design:	512478 As Drilled Surveys		

Survey										
Measured Depth (usft)	Inclination (°)	Azimuth (°)	Vertical Depth (usft)	Subsea Depth (usft)	+N/-S (usft)	+E/-W (usft)	Vertical Section (usft)	Dogleg Rate (°/100usft)	Build Rate (°/100usft)	Turn Rate (°/100usft)
5,010.0	1.53	299.56	5,009.5	3,746.5	-9.6	-15.6	-2.1	0.05	0.05	0.00
5,110.0	1.40	299.25	5,109.5	3,846.5	-8.3	-17.8	0.0	0.13	-0.13	-0.31
5,210.0	1.43	301.88	5,209.5	3,946.5	-7.1	-20.0	2.0	0.07	0.03	2.63
5,310.0	1.52	297.27	5,309.4	4,046.4	-5.8	-22.2	4.1	0.15	0.09	-4.61
5,410.0	1.40	289.25	5,409.4	4,146.4	-4.8	-24.5	6.0	0.24	-0.12	-8.02
Gyro Tie In=5472' MD										
5,472.0	1.44	283.44	5,471.4	4,208.4	-4.4	-26.0	7.0	0.24	0.06	-9.37
5,502.0	0.70	273.40	5,501.4	4,238.4	-4.3	-26.5	7.4	2.54	-2.47	-33.47
5,534.0	3.70	140.60	5,533.4	4,270.4	-5.0	-26.1	6.5	13.15	9.38	-415.00
5,565.0	8.80	137.00	5,564.2	4,301.2	-7.6	-23.8	3.2	16.49	16.45	-11.61
5,596.0	13.50	135.10	5,594.6	4,331.6	-11.9	-19.7	-2.4	15.21	15.16	-6.13
5,628.0	14.10	134.10	5,625.7	4,362.7	-17.2	-14.2	-9.6	2.02	1.88	-3.13
5,659.0	13.50	134.00	5,655.8	4,392.8	-22.4	-8.9	-16.5	1.94	-1.94	-0.32
5,690.0	13.50	132.00	5,685.9	4,422.9	-27.3	-3.6	-23.2	1.51	0.00	-6.45
5,722.0	14.90	137.10	5,716.9	4,453.9	-32.8	2.0	-30.6	5.86	4.38	15.94
5,753.0	15.30	140.30	5,746.9	4,483.9	-38.9	7.3	-38.3	2.98	1.29	10.32
5,785.0	15.20	139.70	5,777.7	4,514.7	-45.3	12.7	-46.4	0.58	-0.31	-1.88
5,816.0	14.50	140.90	5,807.7	4,544.7	-51.4	17.8	-54.1	2.47	-2.26	3.87
5,847.0	13.60	141.50	5,837.8	4,574.8	-57.3	22.5	-61.4	2.94	-2.90	1.94
5,879.0	11.10	144.50	5,869.0	4,606.0	-62.7	26.6	-68.1	8.06	-7.81	9.38
5,910.0	8.80	147.40	5,899.6	4,636.6	-67.2	29.6	-73.4	7.59	-7.42	9.35
5,942.0	6.30	150.90	5,931.3	4,668.3	-70.8	31.8	-77.6	7.94	-7.81	10.94
5,973.0	4.80	136.30	5,962.1	4,699.1	-73.2	33.5	-80.5	6.61	-4.84	-47.10
6,004.0	4.80	127.80	5,993.0	4,730.0	-74.9	35.4	-82.9	2.29	0.00	-27.42
6,036.0	3.30	120.40	6,024.9	4,761.9	-76.2	37.3	-84.8	4.95	-4.69	-23.13
6,067.0	0.60	119.50	6,055.9	4,792.9	-76.7	38.2	-85.7	8.71	-8.71	-2.90
6,099.0	0.40	236.40	6,087.9	4,824.9	-76.9	38.3	-85.9	2.68	-0.63	365.31
6,130.0	1.60	306.50	6,118.9	4,855.9	-76.7	37.8	-85.5	4.88	3.87	226.13
6,162.0	5.00	318.80	6,150.9	4,887.9	-75.4	36.5	-83.8	10.79	10.63	38.44
6,193.0	8.20	323.70	6,181.6	4,918.6	-72.6	34.4	-80.3	10.47	10.32	15.81
6,225.0	10.60	326.50	6,213.2	4,950.2	-68.3	31.4	-75.1	7.63	7.50	8.75
6,256.0	12.30	331.10	6,243.6	4,980.6	-63.0	28.2	-69.0	6.22	5.48	14.84
6,288.0	12.00	332.00	6,274.9	5,011.9	-57.1	25.0	-62.3	1.11	-0.94	2.81
6,319.0	12.90	330.80	6,305.1	5,042.1	-51.2	21.8	-55.6	3.02	2.90	5.47
6,351.0	17.00	332.00	6,336.1	5,073.1	-44.0	17.9	-47.4	12.85	12.81	3.75
6,382.0	21.50	330.70	6,365.3	5,102.3	-35.0	12.9	-37.2	14.58	14.52	-4.19
6,414.0	23.90	330.80	6,394.8	5,131.8	-24.2	6.9	-24.9	7.50	7.50	9.31
6,445.0	26.90	330.00	6,422.8	5,159.8	-12.7	0.3	-11.6	9.74	9.68	-2.58
6,476.0	30.10	331.00	6,450.1	5,187.1	0.2	-6.9	3.1	10.44	10.32	3.23
6,508.0	33.10	333.40	6,477.3	5,214.3	15.0	-14.7	19.8	10.16	9.38	3.44
6,540.0	37.20	334.50	6,503.5	5,240.5	31.6	-22.8	38.3	12.96	12.81	3.44
6,571.0	40.30	334.40	6,527.7	5,264.7	49.1	-31.2	57.7	10.00	10.00	-0.32
6,603.0	43.30	335.20	6,551.5	5,288.5	68.4	-40.3	79.0	9.52	9.38	2.50

RECEIVED
Office of Oil and Gas
JUL 31 2015
WV Department of Environmental Protection



Phoenix
Survey Report



Database:	EDM 5000.1 Single User Db	Local Co-ordinate Reference:	Site Doddridge County 512478
Company:	EQT Production - Marcellus	TVD Reference:	KB @ 1263.0usft
Project:	Doddridge County, WV Grid	MD Reference:	KB @ 1263.0usft
Site:	Doddridge County 512478	North Reference:	Grid
Well:	Well #512478	Survey Calculation Method:	Minimum Curvature
Wellbore:	Main Wellbore		
Design:	512478 As Drilled Surveys		

Survey										
Measured Depth (usft)	Inclination (°)	Azimuth (°)	Vertical Depth (usft)	Subsea Depth (usft)	+N/-S (usft)	+E/-W (usft)	Vertical Section (usft)	Dogleg Rate (°/100usft)	Build Rate (°/100usft)	Turn Rate (°/100usft)
6,634.0	47.00	333.90	6,573.4	5,310.4	88.2	-49.7	101.0	12.30	11.94	-4.19
6,666.0	51.10	333.20	6,594.3	5,331.3	109.8	-60.5	125.1	12.92	12.81	-2.19
6,697.0	54.20	332.50	6,613.2	5,350.2	131.8	-71.7	149.7	10.16	10.00	-2.26
6,729.0	57.50	331.90	6,631.1	5,368.1	155.2	-84.1	176.2	10.43	10.31	-1.88
6,760.0	60.70	331.40	6,647.0	5,384.0	178.6	-96.7	202.7	10.41	10.32	-1.61
6,792.0	64.00	331.20	6,661.9	5,398.9	203.5	-110.3	231.0	10.33	10.31	-0.63
6,823.0	66.60	332.20	6,674.8	5,411.8	228.3	-123.7	259.1	8.88	8.39	3.23
6,854.0	68.00	332.80	6,686.8	5,423.8	253.6	-136.9	287.7	4.86	4.52	1.94
6,885.0	71.00	333.80	6,697.6	5,434.6	279.6	-149.9	316.7	10.14	9.68	3.23
6,917.0	74.20	335.20	6,707.2	5,444.2	307.1	-163.1	347.3	10.84	10.00	4.38
6,948.0	78.40	336.60	6,714.6	5,451.6	334.6	-175.4	377.4	14.24	13.55	4.52
6,980.0	81.10	338.00	6,720.3	5,457.3	363.7	-187.5	408.8	9.47	8.44	4.38
7,011.0	83.40	338.10	6,724.4	5,461.4	392.1	-199.0	439.5	7.43	7.42	0.32
7,043.0	87.20	337.90	6,727.1	5,464.1	421.7	-210.9	471.3	11.89	11.88	-0.63
LP=7068' MD/ 6728' TVD										
7,068.0	89.70	337.80	6,727.7	5,464.7	444.9	-220.3	496.3	10.01	10.00	-0.40
7,075.0	89.70	337.80	6,727.8	5,464.8	451.3	-223.0	503.3	0.00	0.00	0.00
7,169.0	90.60	337.80	6,727.5	5,464.5	538.4	-258.5	597.2	0.96	0.96	0.00
7,264.0	89.50	335.10	6,727.4	5,464.4	625.4	-296.5	692.1	3.07	-1.16	-2.84
7,358.0	88.20	334.10	6,729.3	5,466.3	710.3	-336.8	786.1	1.74	-1.38	-1.06
7,452.0	89.20	334.90	6,731.5	5,468.5	795.2	-377.2	880.1	1.36	1.06	0.85
7,546.0	88.00	335.70	6,733.8	5,470.8	880.5	-416.5	974.0	1.53	-1.28	0.85
7,641.0	88.10	335.20	6,737.0	5,474.0	966.9	-455.9	1,069.0	0.54	0.11	-0.53
7,735.0	88.80	335.10	6,739.5	5,476.5	1,052.2	-495.4	1,163.0	0.75	0.74	-0.11
7,830.0	89.10	335.00	6,741.3	5,478.3	1,138.3	-535.5	1,257.9	0.33	0.32	-0.11
7,924.0	89.80	334.00	6,742.2	5,479.2	1,223.1	-576.0	1,351.9	1.30	0.74	-1.06
8,018.0	89.40	334.70	6,742.8	5,479.8	1,307.8	-616.7	1,445.9	0.86	-0.43	0.74
8,112.0	86.30	333.70	6,746.4	5,483.4	1,392.4	-657.5	1,539.8	3.46	-3.30	-1.06
8,207.0	88.60	335.70	6,750.6	5,487.6	1,478.2	-698.1	1,634.7	3.21	2.42	2.11
8,302.0	89.50	335.10	6,752.2	5,489.2	1,564.6	-737.6	1,729.7	1.14	0.95	-0.63
8,396.0	90.20	334.80	6,752.4	5,489.4	1,649.7	-777.4	1,823.7	0.81	0.74	-0.32
8,490.0	91.10	334.70	6,751.3	5,488.3	1,734.7	-817.5	1,917.7	0.96	0.96	0.11
8,584.0	90.30	335.60	6,750.2	5,487.2	1,820.0	-857.0	2,011.7	1.28	-0.85	-0.96
8,679.0	89.80	336.40	6,750.1	5,487.1	1,906.8	-895.7	2,106.7	0.99	-0.53	0.84
8,773.0	89.80	335.80	6,750.4	5,487.4	1,992.7	-933.7	2,200.7	0.64	0.00	-0.34
8,867.0	89.20	336.00	6,751.3	5,488.3	2,078.5	-972.1	2,294.6	0.67	-0.64	0.21
8,962.0	90.50	335.50	6,751.5	5,488.5	2,165.2	-1,011.1	2,389.6	1.47	1.37	-0.53
9,056.0	90.00	336.30	6,751.1	5,488.1	2,251.0	-1,049.5	2,483.6	1.00	-0.53	0.21
9,151.0	89.80	333.30	6,751.3	5,488.3	2,336.9	-1,090.0	2,578.6	3.15	0.74	2.16
9,246.0	89.80	333.80	6,751.6	5,488.6	2,422.0	-1,132.3	2,673.6	0.53	0.00	0.53
9,341.0	89.30	335.00	6,752.3	5,489.3	2,507.6	-1,173.3	2,768.6	1.37	-0.53	1.26
9,435.0	90.30	334.70	6,752.7	5,489.7	2,592.7	-1,213.3	2,862.6	1.11	1.06	-0.32
Final Survey=9615' MD/ 6764' TVD										

RECEIVED
Office of Oil and Gas
JUL 31 2015
WV Department of
Environmental Protection



Phoenix
Survey Report



Database:	EDM 5000.1 Single User Db	Local Co-ordinate Reference:	Site Doddridge County 512478
Company:	EQT Production - Marcellus	TVD Reference:	KB @ 1263.0usft
Project:	Doddridge County, WV Grid	MD Reference:	KB @ 1263.0usft
Site:	Doddridge County 512478	North Reference:	Grid
Well:	Well #512478	Survey Calculation Method:	Minimum Curvature
Wellbore:	Main Wellbore		
Design:	512478 As Drilled Surveys		

Measured Depth (usft)	Inclination (°)	Azimuth (°)	Vertical Depth (usft)	Subsea Depth (usft)	+N/-S (usft)	+E/-W (usft)	Vertical Section (usft)	Dogleg Rate (°/100usft)	Build Rate (°/100usft)	Turn Rate (°/100usft)
9,515.0	88.30	335.60	6,753.6	5,490.6	2,665.3	-1,246.9	2,942.5	2.74	-2.50	1.13
Projection to TD=9572' MD/ 6755' TVD										
9,572.0	88.30	335.60	6,755.3	5,492.3	2,717.2	-1,270.4	2,999.5	0.00	0.00	0.00

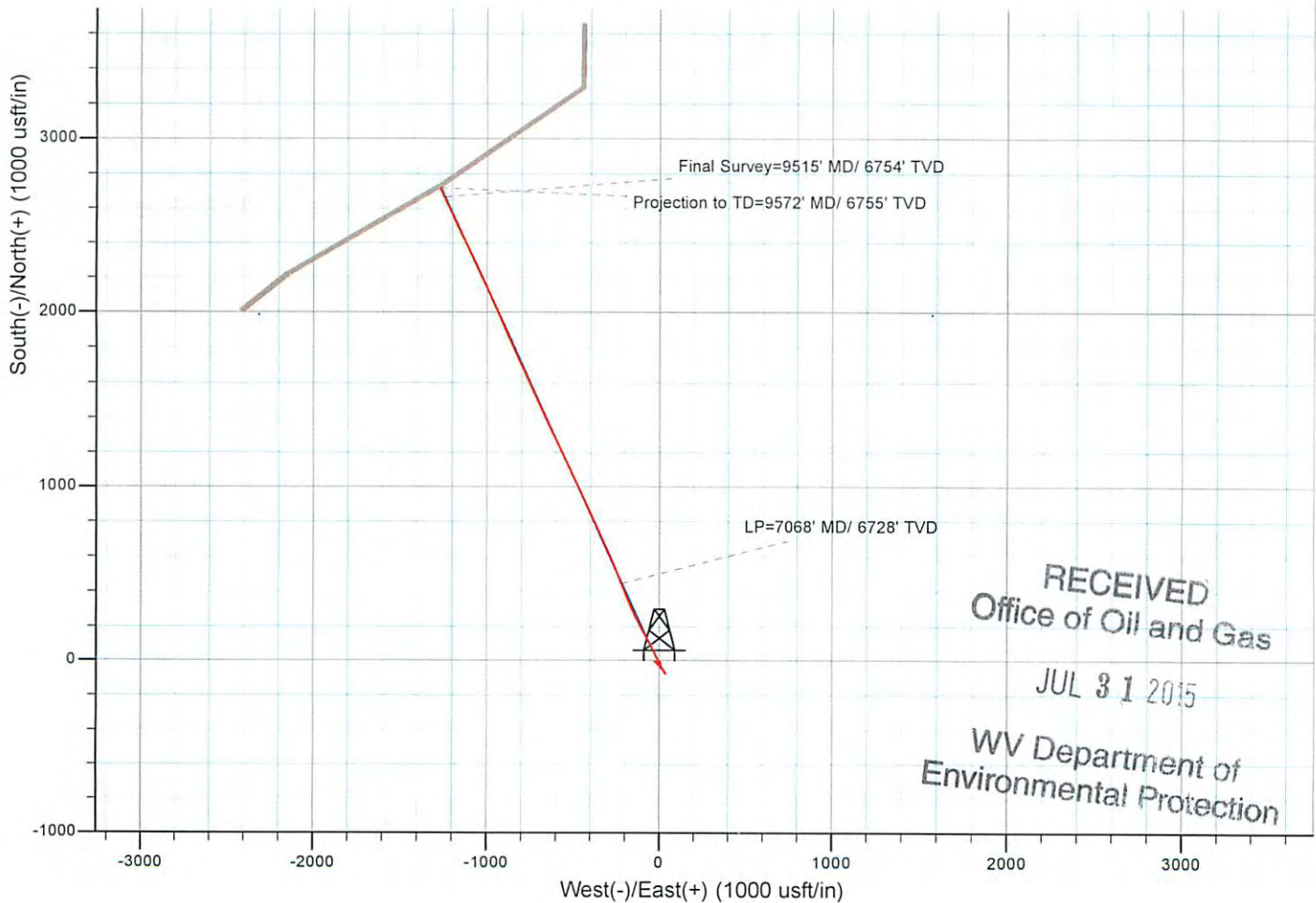
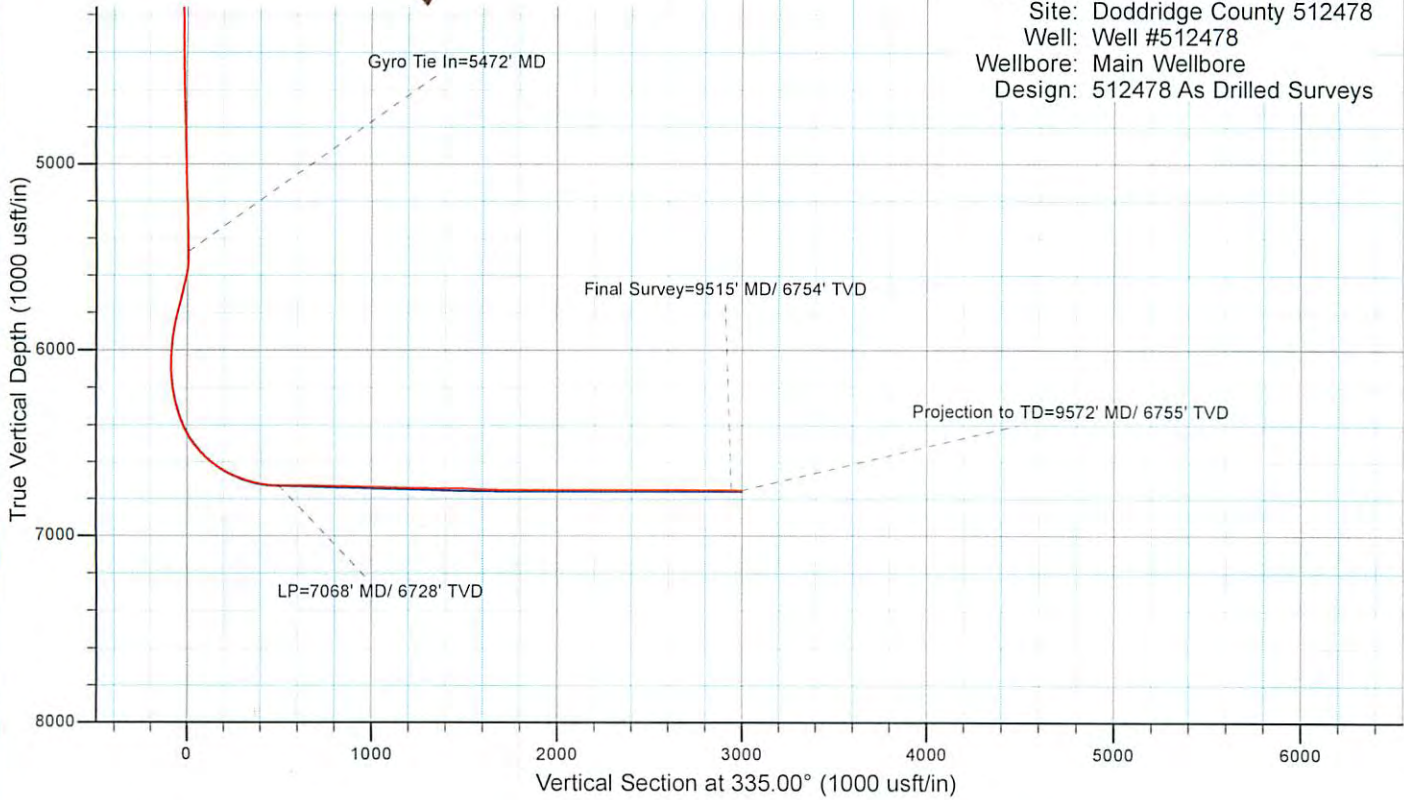
Measured Depth (usft)	Vertical Depth (usft)	Local Coordinates		Comment
		+N/-S (usft)	+E/-W (usft)	
5,472.0	5,471.4	-4.4	-26.0	Gyro Tie In=5472' MD
7,068.0	6,727.7	444.9	-220.3	LP=7068' MD/ 6728' TVD
9,515.0	6,753.6	2,665.3	-1,246.9	Final Survey=9515' MD/ 6754' TVD
9,572.0	6,755.3	2,717.2	-1,270.4	Projection to TD=9572' MD/ 6755' TVD

Checked By: _____ Approved By: _____ Date: _____

RECEIVED
Office of Oil and Gas
JUL 31 2015
WV Department of
Environmental Protection



Project: Doddridge County, WV Grid
Site: Doddridge County 512478
Well: Well #512478
Wellbore: Main Wellbore
Design: 512478 As Drilled Surveys



RECEIVED
Office of Oil and Gas
JUL 31 2015
WV Department of
Environmental Protection