

# EQT PRODUCTION COMPANY LEWIS MAXWELL LEASE 2654 ACRES ± WELL NO. WV 512483

**BOTTOM HOLE**  
WELL NO. WV 512483  
STATE PLANE COORDINATES  
(NORTH ZONE) NAD'27  
N. 269,643.6  
E. 1,632,488.1

LAT=(N) 39.233045  
LONG=(W) 80.797439

UTM (NAD83)(METERS)  
N. 4,342,667.2  
E. 517,497.3

ZOE K WALTERS  
261.25 ACRES ±

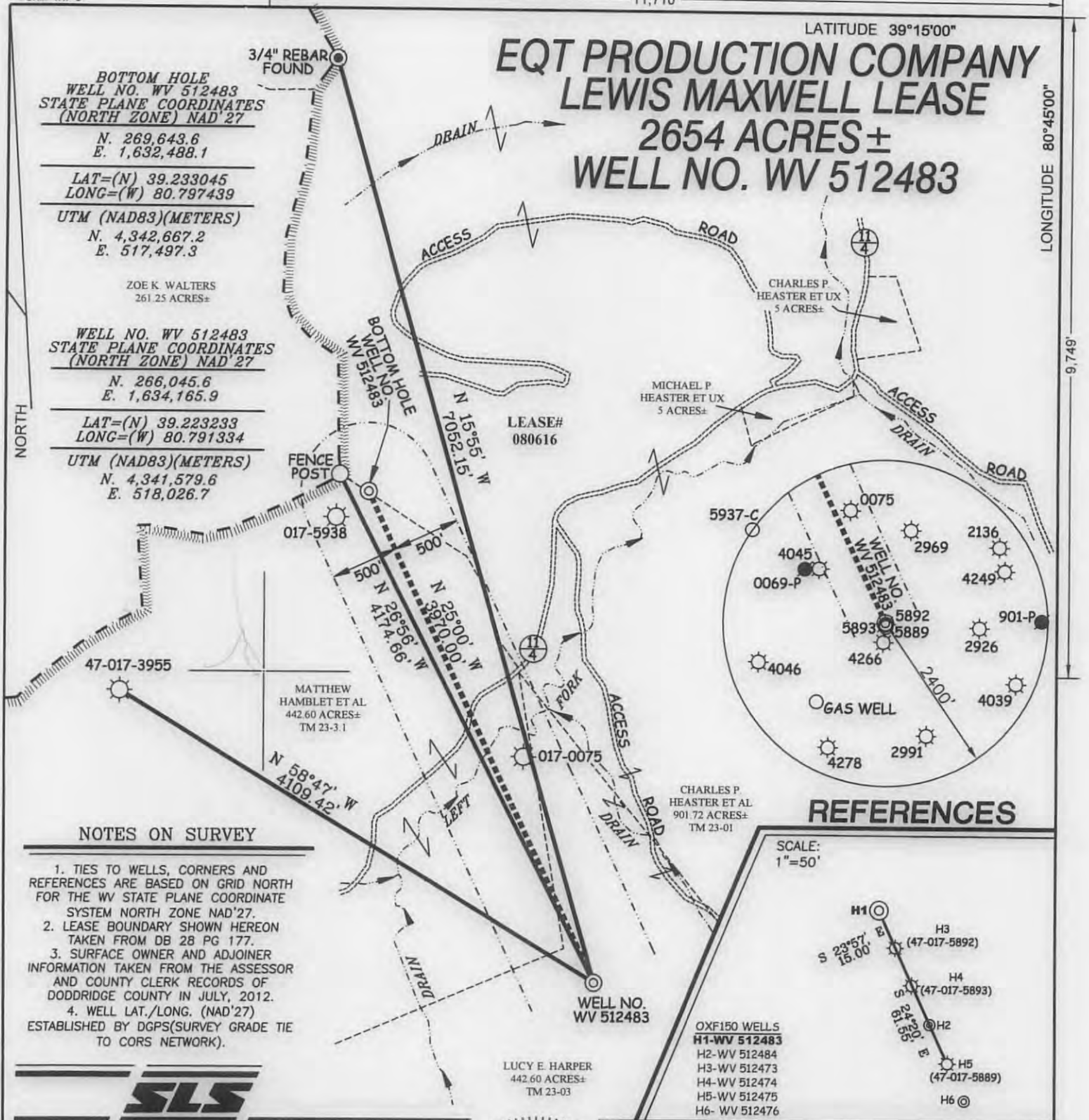
**WELL NO. WV 512483**  
STATE PLANE COORDINATES  
(NORTH ZONE) NAD'27  
N. 266,045.6  
E. 1,634,165.9

LAT=(N) 39.223233  
LONG=(W) 80.791334  
UTM (NAD83)(METERS)  
N. 4,341,579.6  
E. 518,026.7

LEASE#  
080616

NORTH

9,749'



### NOTES ON SURVEY

1. TIES TO WELLS, CORNERS AND REFERENCES ARE BASED ON GRID NORTH FOR THE WV STATE PLANE COORDINATE SYSTEM NORTH ZONE NAD'27.
2. LEASE BOUNDARY SHOWN HEREON TAKEN FROM DB 28 PG 177.
3. SURFACE OWNER AND ADJOINER INFORMATION TAKEN FROM THE ASSESSOR AND COUNTY CLERK RECORDS OF DODDRIDGE COUNTY IN JULY, 2012.
4. WELL LAT./LONG. (NAD'27) ESTABLISHED BY DGPS(SURVEY GRADE TIE TO CORS NETWORK).



### REFERENCES

SCALE:  
1"=50'



- OXF150 WELLS  
 H1-WV 512483  
 H2-WV 512484  
 H3-WV 512473  
 H4-WV 512474  
 H5-WV 512475  
 H6- WV 512476

I THE UNDERSIGNED, HEREBY CERTIFY THAT THIS PLAT IS CORRECT TO THE BEST OF MY KNOWLEDGE AND BELIEF AND SHOWS ALL THE INFORMATION REQUIRED BY LAW AND THE REGULATIONS ISSUED AND PRESCRIBED BY THE DIVISION OF ENVIRONMENTAL PROTECTION.

P.S.  
677

*Gregory A. Smith*



(+) DENOTES LOCATION OF WELL ON UNITED STATES TOPOGRAPHIC MAPS.

DATE AUGUST 29, 20 13

OPERATORS WELL NO. WV 512483

API WELL NO. 47-17-06389 H6A  
STATE COUNTY PERMIT

MINIMUM DEGREE OF ACCURACY 1 / 200 FILE NO. 6980P512483R5(280-81)  
 PROVEN SOURCE OF ELEVATION DGPS (SURVEY GRADE TIE TO CORS NETWORK) SCALE 1" = 1000'

STATE OF WEST VIRGINIA  
 DIVISION OF ENVIRONMENTAL PROTECTION  
 OFFICE OF OIL AND GAS



WELL TYPE: OIL  GAS  LIQUID INJECTION  WASTE DISPOSAL  IF "GAS" PRODUCTION  STORAGE  DEEP  SHALLOW

LOCATION: ELEVATION 1,259' (GROUND) 1,258' (PROPOSED) WATERSHED LEFT FORK ARNOLDS CREEK  
 DISTRICT WEST UNION COUNTY DODDRIDGE QUADRANGLE OXFORD 7.5'

SURFACE OWNER LUCY E. HARPER ACREAGE 442.60 ±  
 ROYALTY OWNER LEWIS MAXWELL HRS ACREAGE 2654 ±  
 PROPOSED WORK: LEASE NO. 080616  
 DRILL  CONVERT  DRILL DEEPER  REDRILL  FRACTURE OR STIMULATE  PLUG OFF OLD FORMATION   
 PERFORATE NEW FORMATION  PLUG AND ABANDON  CLEAN OUT AND REPLUG  OTHER   
 PHYSICAL CHANGE IN WELL (SPECIFY) \_\_\_\_\_ TARGET FORMATION MARCELLUS  
 ESTIMATED DEPTH \_\_\_\_\_

WELL OPERATOR EQT PRODUCTION COMPANY  
 ADDRESS 115 PROFESSIONAL PLACE P.O. BOX 280 BRIDGEPORT, WV 26330

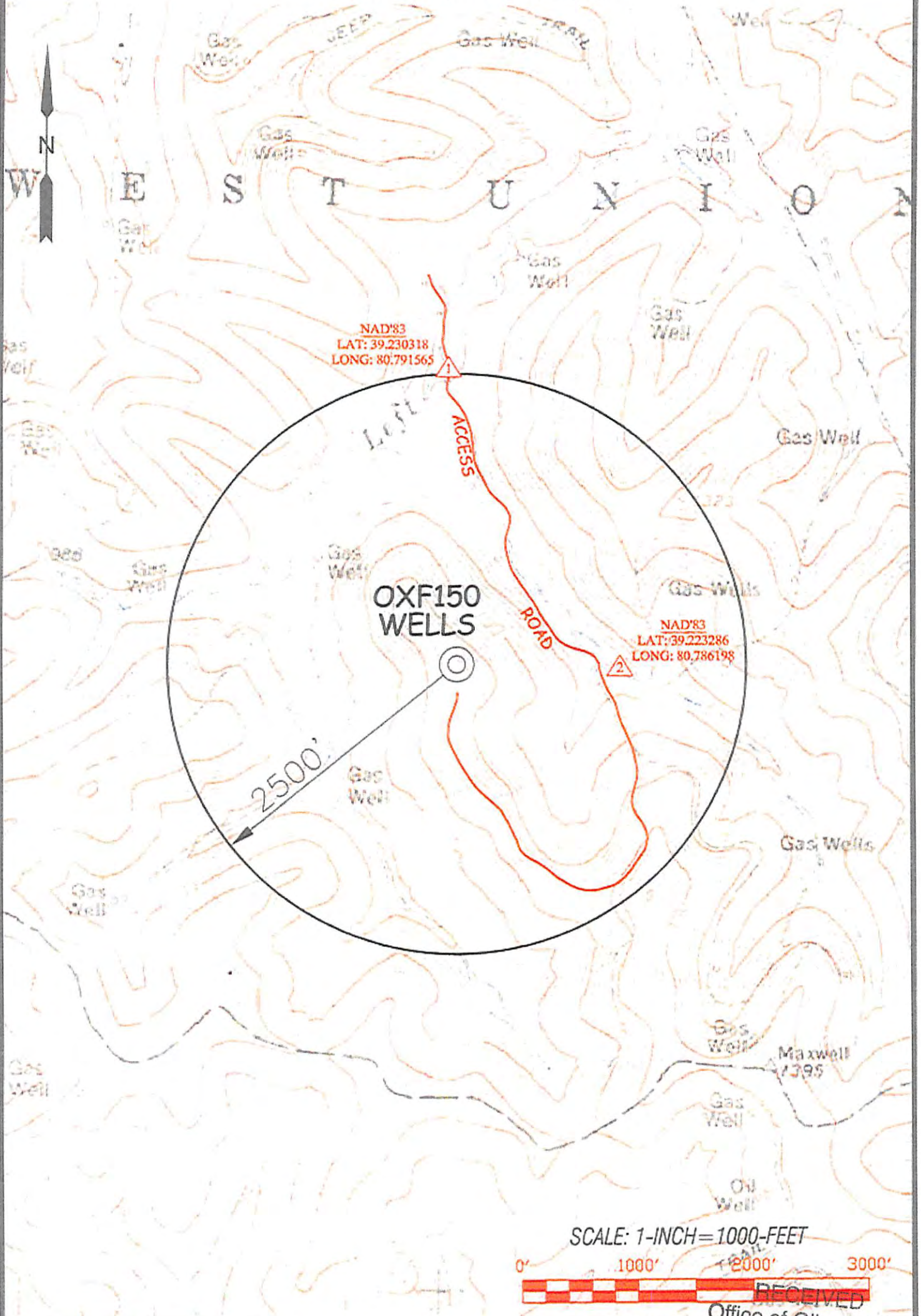
DESIGNATED AGENT REX C. RAY  
 ADDRESS 115 PROFESSIONAL PLACE P.O. BOX 280 BRIDGEPORT, WV 26330

01/17/2014

COUNTY NAME PERMIT



# LEWIS MAXWELL LEASE OXF150 WELLS



SCALE: 1-INCH=1000-FEET



RECEIVED  
Office of Oil and Gas

Professional Energy Consultants  
A DIVISION OF SLS ENERGY SERVICES, INC.

SEP 22 2013  
DRAWN BY: K.D.W. FILE NO: 6980 DATE: 09/12/13 CADD FILE: 6980W551246.372

TOPO SECTION OF:  
OXFORD, WV 7.5' QUAD

DISTRICT	COUNTY	TAX MAP-PARCEL NO.
WEST UNION	DODDRIDGE	23-3

OPERATOR:  
EQT PRODUCTION COMPANY  
115 PROFESSIONAL PLACE  
P.O. BOX 200  
BRIDGEPORT, WV 26300

SEP 22 2013  
WV Department of Environmental Protection