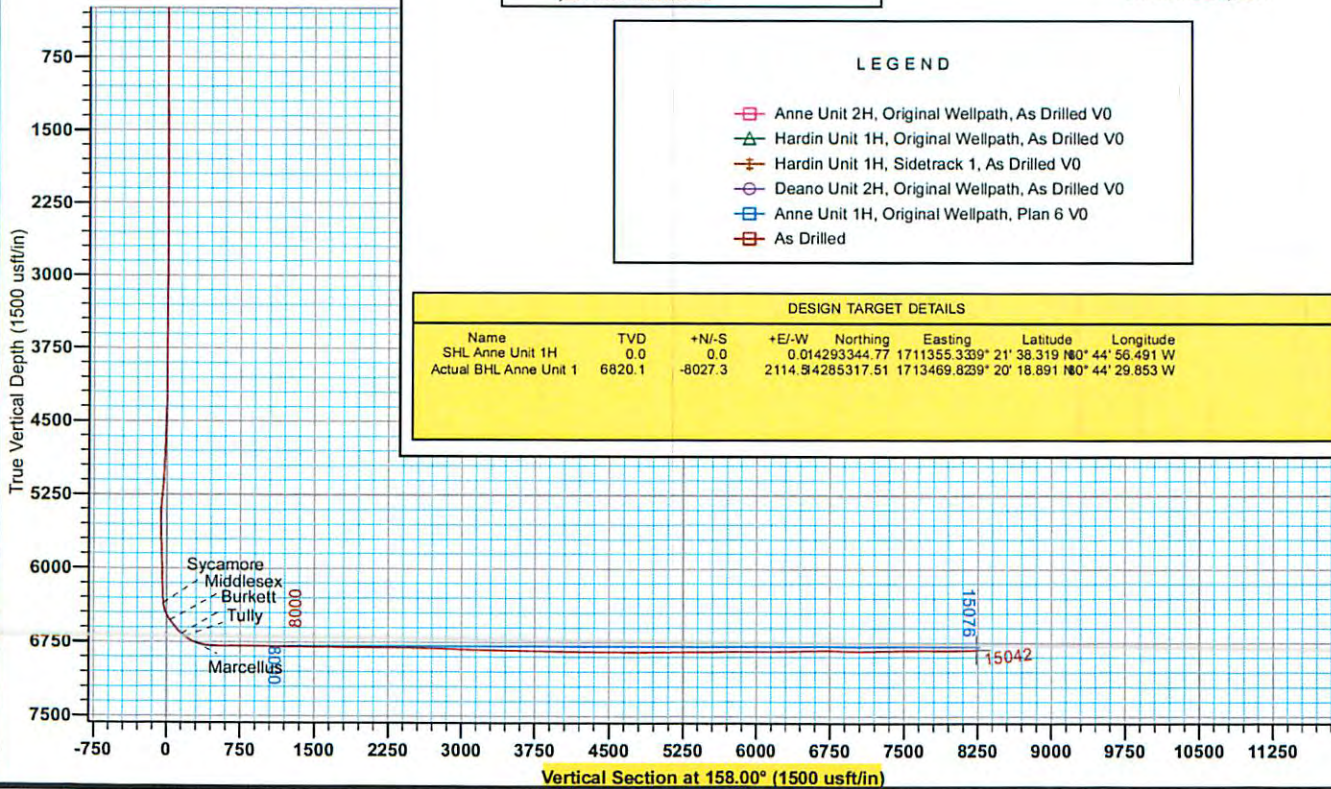




Antero Resources
 Anne Unit 1H
 Doddridge County WV
 Northing: 14293344.77
 Easting: 1711355.33
 As Drilled

17-016373



WELL DETAILS: Anne Unit 1H

+N/-S	+E/-W	Northing	Easting	Latitude	Longitude	Slot
0.0	0.0	14293344.77	1711355.33	39° 21' 38.319 N	80° 44' 56.491 W	

REFERENCE INFORMATION

Co-ordinate (N/E) Reference: Well Anne Unit 1H, Grid North
 Vertical (V/C) Reference: Precision 522 GL 1001' + 18' RKB @ 1019 Duft
 Section (V/S) Reference: Slot - (3.0M, 0 DE)
 Measured Depth Reference: Precision 522 GL 1001' + 18' RKB @ 1019 Duft
 Calculation Method: Minimum Curvature



PROJECT DETAILS: Doddridge County WV

Geodetic System: Universal Transverse Mercator (US Survey Feet)
 Datum: NAD 1927 (NADCON CONUS)
 Ellipsoid: Clarke 1866
 Zone: Zone 17N (84 W to 78 W)
 System Datum: Mean Sea Level

Genie Lightfoot
 14:40, August 28 2014

Scientific Drilling
 421 South Eagle Lane
 Oklahoma City, OK

LEGEND

- Anne Unit 2H, Original Wellpath, As Drilled V0
- △ Hardin Unit 1H, Original Wellpath, As Drilled V0
- + Hardin Unit 1H, Sidetrack 1, As Drilled V0
- Deano Unit 2H, Original Wellpath, As Drilled V0
- Anne Unit 1H, Original Wellpath, Plan 6 V0
- As Drilled

DESIGN TARGET DETAILS

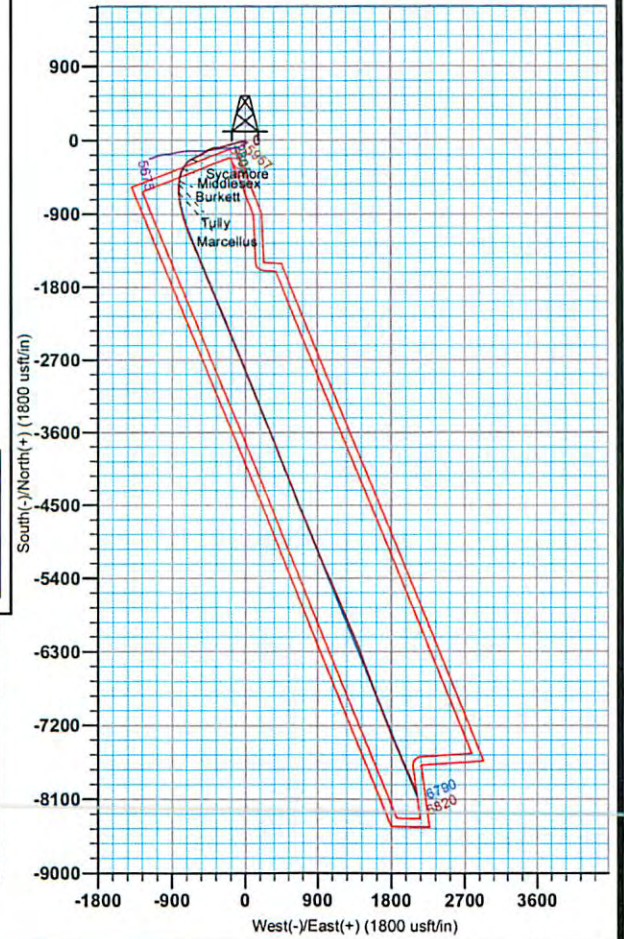
Name	TVD	+N/-S	+E/-W	Northing	Easting	Latitude	Longitude
SHL Anne Unit 1H	0.0	0.0	0.014293344.77	1711355.3339° 21'	38.319 N	80° 44' 56.491 W	
Actual BHL Anne Unit 1	6820.1	-8027.3	2114.94285317.51	1713469.8239° 20'	18.891 N	80° 44' 29.853 W	



To convert Magnetic North to Grid, Subtract 8.67°
 To convert True North to Grid, Subtract 0.16°

Azimuths to Grid North
 True North: -0.16°
 Magnetic North: -8.67°

Magnetic Field
 Strength: 52309.5nT
 Dip Angle: 66.93°
 Date: 4/23/2014
 Model: BGM2014



Received
 Office of Oil & Gas
 AUG 17 2015

17-06373



Antero Resources

**Doddridge County WV
Anne / Hardin Pad
Anne Unit 1H
Original Wellpath**

Design: As Drilled

EOW Completion Report

28 August, 2014



Received
Office of Oil & Gas

AUG 17 2015

10/09/2015

17-06373



EOW Completion Report



Company:	Antero Resources	Local Co-ordinate Reference:	Well Anne Unit 1H
Project:	Doddridge County WV	TVD Reference:	Precision 522 GL 1001' + 18' RKB @ 1019.0usft
Site:	Anne / Hardin Pad	MD Reference:	Precision 522 GL 1001' + 18' RKB @ 1019.0usft
Well:	Anne Unit 1H	North Reference:	Grid
Wellbore:	Original Wellpath	Survey Calculation Method:	Minimum Curvature
Design:	As Drilled	Database:	Oklahoma District

Project	Doddridge County WV, McClellan District		
Map System:	Universal Transverse Mercator (US Survey Fee	System Datum:	Mean Sea Level
Geo Datum:	NAD 1927 (NADCON CONUS)		
Map Zone:	Zone 17N (84 W to 78 W)		

Site	Anne / Hardin Pad				
Site Position:		Northing:	14,293,344.77 usft	Latitude:	39° 21' 38.319 N
From:	Map	Easting:	1,711,355.33 usft	Longitude:	80° 44' 56.491 W
Position Uncertainty:	2.0 usft	Slot Radius:	13-3/16"	Grid Convergence:	0.16 °

Well	Anne Unit 1H					
Well Position	+N-S	0.0 usft	Northing:	14,293,344.77 usft	Latitude:	39° 21' 38.319 N
	+E-W	0.0 usft	Easting:	1,711,355.33 usft	Longitude:	80° 44' 56.491 W
Position Uncertainty		2.0 usft	Wellhead Elevation:	1,019.0 usft	Ground Level:	1,001.0 usft

Wellbore	Original Wellpath				
Magnetics	Model Name	Sample Date	Declination (°)	Dip Angle (°)	Field Strength (nT)
	EGGM2014	4/23/2014	-8.51	66.93	52,309

Design	As Drilled				
Audit Notes:					
Version:	1.0	Phase:	ACTUAL	Tie On Depth:	0.0
Vertical Section:		Depth From (TVD) (usft)	+N-S (usft)	+E-W (usft)	Direction (°)
		0.0	0.0	0.0	158.00

Survey Program	Date 8/28/2014				
From (usft)	To (usft)	Survey (Wellbore)	Tool Name	Description	
105.0	5,883.0	Survey #3 Gyro to KOP (Original Wellpath)	SDI Standard Keeper	Scientific Drilling Intl. Standard Wireline Keeper	
5,961.0	15,042.0	Survey #2 MWD (Original Wellpath)	SDI MWD	Scientific Drilling Intl. MWD - Standard ver 1.0.1	

Survey								
MD (usft)	Inc (°)	Azi (azimuth) (°)	TVD (usft)	N/S (usft)	E/W (usft)	V. Sec (usft)	DLeg (°/100usft)	
0.0	0.00	0.00	0.0	0.0	0.0	0.0	0.00	
105.0	0.26	133.16	105.0	-0.2	0.2	0.2	0.25	
205.0	0.35	164.16	205.0	-0.6	0.4	0.7	0.18	
305.0	0.41	181.13	305.0	-1.3	0.5	1.4	0.13	
405.0	0.31	160.57	405.0	-1.9	0.6	2.0	0.16	
505.0	0.22	165.96	505.0	-2.3	0.7	2.4	0.09	
605.0	0.18	213.97	605.0	-2.6	0.7	2.7	0.17	
705.0	0.15	221.50	705.0	-2.9	0.5	2.8	0.04	
805.0	0.17	192.65	805.0	-3.1	0.4	3.0	0.08	
905.0	0.10	192.76	905.0	-3.3	0.3	3.2	0.07	
1,005.0	0.13	220.18	1,005.0	-3.5	0.2	3.3	0.06	

Received
Office of Oil & Gas
AUG 17 2015

17-06373



EOW Completion Report



Company:	Antero Resources	Local Co-ordinate Reference:	Well Anne Unit 1H
Project:	Doddridge County WV	TVD Reference:	Precision 522 GL 1001' + 18' RKB @ 1019.0usft
Site:	Anne / Hardin Pad	MD Reference:	Precision 522 GL 1001' + 18' RKB @ 1019.0usft
Well:	Anne Unit 1H	North Reference:	Grid
Wellbore:	Original Wellpath	Survey Calculation Method:	Minimum Curvature
Design:	As Drilled	Database:	Oklahoma District

Survey

MD (usft)	Inc (°)	Azi (azimuth) (°)	TVD (usft)	N/S (usft)	E/W (usft)	V. Sec (usft)	DLeg (°/100usft)
1,105.0	0.19	219.06	1,105.0	-3.7	0.1	3.5	0.06
1,205.0	0.23	224.57	1,205.0	-4.0	-0.2	3.6	0.04
1,305.0	0.16	255.81	1,305.0	-4.2	-0.5	3.7	0.12
1,405.0	0.15	243.85	1,405.0	-4.3	-0.7	3.7	0.03
1,505.0	0.21	263.72	1,505.0	-4.3	-1.0	3.6	0.09
1,605.0	0.09	229.72	1,605.0	-4.4	-1.3	3.6	0.14
1,705.0	0.21	129.34	1,705.0	-4.6	-1.2	3.8	0.24
1,805.0	0.20	141.03	1,805.0	-4.8	-0.9	4.1	0.04
1,905.0	0.12	138.99	1,905.0	-5.0	-0.7	4.4	0.08
2,005.0	0.10	180.77	2,005.0	-5.2	-0.7	4.6	0.08
2,105.0	0.11	209.64	2,105.0	-5.4	-0.7	4.7	0.05
2,205.0	0.15	220.10	2,205.0	-5.6	-0.9	4.8	0.05
2,305.0	0.24	263.62	2,305.0	-5.7	-1.1	4.8	0.17
2,405.0	0.16	241.97	2,405.0	-5.8	-1.5	4.8	0.11
2,505.0	0.25	264.30	2,505.0	-5.9	-1.8	4.8	0.12
2,605.0	0.36	271.11	2,605.0	-5.9	-2.4	4.6	0.12
2,705.0	0.36	265.60	2,705.0	-5.9	-3.0	4.4	0.03
2,805.0	0.45	264.64	2,805.0	-6.0	-3.7	4.1	0.09
2,905.0	0.51	275.54	2,905.0	-6.0	-4.5	3.8	0.11
3,005.0	0.55	271.19	3,005.0	-5.9	-5.4	3.4	0.06
3,105.0	0.56	274.27	3,105.0	-5.9	-6.4	3.0	0.03
3,205.0	0.51	273.52	3,205.0	-5.8	-7.3	2.6	0.05
3,305.0	0.51	267.78	3,305.0	-5.8	-8.2	2.3	0.05
3,405.0	0.50	268.30	3,405.0	-5.8	-9.1	2.0	0.01
3,505.0	0.55	264.54	3,505.0	-5.9	-10.0	1.7	0.06
3,605.0	0.63	272.12	3,604.9	-5.9	-11.0	1.3	0.11
3,705.0	0.53	269.65	3,704.9	-5.9	-12.1	0.9	0.10
3,805.0	0.51	265.12	3,804.9	-5.9	-13.0	0.6	0.05
3,905.0	0.59	271.11	3,904.9	-5.9	-13.9	0.3	0.10
4,005.0	0.90	258.87	4,004.9	-6.1	-15.2	-0.1	0.35
4,105.0	4.58	245.76	4,104.8	-7.9	-19.6	0.0	3.71
4,205.0	8.13	251.66	4,204.2	-11.7	-30.0	-0.3	3.60
4,305.0	11.20	253.61	4,302.7	-16.7	-46.0	-1.7	3.09
4,405.0	13.51	259.79	4,400.4	-21.5	-66.8	-5.1	2.66
4,505.0	15.00	257.96	4,497.3	-26.3	-91.0	-9.7	1.56
4,605.0	14.59	249.95	4,594.0	-33.3	-115.5	-12.4	2.08
4,705.0	14.49	257.59	4,690.8	-40.3	-139.5	-14.9	1.92
4,805.0	16.40	255.87	4,787.2	-46.5	-165.4	-18.9	1.96
4,905.0	19.53	257.02	4,882.3	-53.7	-195.4	-23.5	3.15
5,005.0	21.78	254.83	4,975.9	-62.3	-229.6	-28.3	2.38
5,105.0	22.60	251.67	5,068.5	-73.2	-265.8	-31.7	1.45
5,205.0	19.16	263.63	5,162.0	-81.0	-300.3	-37.4	5.46
5,305.0	18.80	264.88	5,256.5	-84.3	-332.7	-46.5	0.54
5,405.0	14.17	267.06	5,352.4	-86.4	-361.0	-55.26	4.67

Received
Office of Oil & Gas
17 2015

17-06373



EOW Completion Report



Company:	Antero Resources	Local Co-ordinate Reference:	Well Anne Unit 1H
Project:	Doddridge County WV	TVD Reference:	Precision 522 GL 1001' + 18' RKB @ 1019.0usft
Site:	Anne / Hardin Pad	MD Reference:	Precision 522 GL 1001' + 18' RKB @ 1019.0usft
Well:	Anne Unit 1H	North Reference:	Grid
Wellbore:	Original Wellpath	Survey Calculation Method:	Minimum Curvature
Design:	As Drilled	Database:	Oklahoma District

Survey									
MD (usft)	Inc (°)	Azi (azimuth) (°)		TVD (usft)	N/S (usft)	E/W (usft)	V. Sec (usft)	DLeg (°/100usft)	
5,505.0	15.97	253.41	253.41	5,449.0	-90.9	-386.4	-60.5	3.97	
5,605.0	18.48	245.31	245.31	5,544.5	-101.5	-414.0	-61.0	3.47	
5,705.0	19.00	244.37	244.37	5,639.2	-115.1	-443.1	-59.2	0.60	
5,805.0	16.02	239.44	239.44	5,734.6	-129.2	-469.6	-56.1	3.33	
5,883.0	14.01	235.03	235.03	5,809.9	-140.1	-486.6	-52.4	2.96	
5,961.0	12.38	243.68	243.68	5,885.8	-149.2	-501.9	-49.7	3.28	
5,992.0	12.33	244.31	244.31	5,916.1	-152.1	-507.8	-49.2	0.46	
6,085.0	13.90	241.21	241.21	6,006.7	-161.8	-526.6	-47.3	1.85	
6,177.0	14.84	242.95	242.95	6,095.8	-172.5	-546.8	-44.9	1.12	
6,208.0	14.48	242.81	242.81	6,125.8	-176.0	-553.7	-44.2	1.17	
6,239.0	15.79	242.84	242.84	6,155.7	-179.7	-560.9	-43.5	4.23	
6,270.0	18.87	242.34	242.34	6,185.3	-184.0	-569.1	-42.6	9.95	
6,301.0	22.47	242.30	242.30	6,214.3	-189.1	-578.8	-41.5	11.61	
6,332.0	26.05	242.46	242.46	6,242.6	-195.0	-590.1	-40.3	11.55	
6,362.0	29.65	243.39	243.39	6,269.1	-201.4	-602.6	-39.0	12.09	
6,393.0	33.26	244.11	244.11	6,295.5	-208.5	-617.1	-37.8	11.71	
6,424.0	36.40	243.05	243.05	6,321.0	-216.4	-633.0	-36.5	10.32	
6,455.0	39.41	242.76	242.76	6,345.4	-225.1	-649.9	-34.8	9.73	
6,468.0	39.84	241.24	241.24	6,355.4	-229.0	-657.2	-33.9	8.15	
Sycamore									
6,486.0	40.46	239.18	239.18	6,369.2	-234.7	-667.3	-32.3	8.15	
6,517.0	40.42	235.03	235.03	6,392.8	-245.6	-684.2	-28.5	8.68	
6,548.0	40.81	229.39	229.39	6,416.3	-258.0	-700.1	-23.1	11.91	
6,578.0	42.98	224.19	224.19	6,438.7	-271.7	-714.7	-15.8	13.64	
6,609.0	44.96	218.83	218.83	6,461.0	-287.8	-728.9	-6.2	13.59	
6,640.0	45.60	214.67	214.67	6,482.8	-305.5	-742.1	5.2	9.75	
6,671.0	45.98	209.58	209.58	6,504.4	-324.3	-753.9	18.3	11.83	
6,702.0	46.33	205.84	205.84	6,525.9	-344.1	-764.3	32.7	8.77	
6,707.0	46.40	205.26	205.26	6,529.4	-347.3	-765.8	35.2	8.58	
Middlesex									
6,733.0	46.82	202.24	202.24	6,547.2	-364.6	-773.4	48.3	8.58	
6,764.0	46.55	199.59	199.59	6,568.5	-385.7	-781.5	64.8	6.28	
6,794.0	46.89	198.08	198.08	6,589.1	-406.4	-788.6	81.4	3.84	
6,825.0	47.50	194.72	194.72	6,610.1	-428.2	-795.0	99.2	8.19	
6,856.0	49.26	191.76	191.76	6,630.7	-450.7	-800.3	118.1	9.12	
6,887.0	51.01	187.78	187.78	6,650.6	-474.2	-804.3	138.3	11.36	
6,910.0	52.05	186.43	186.43	6,664.9	-492.0	-806.5	154.1	6.46	
Burkett									
6,918.0	52.42	185.97	185.97	6,669.8	-498.3	-807.2	159.7	6.46	
6,949.0	54.46	185.03	185.03	6,688.3	-523.1	-809.6	181.7	7.02	
6,957.0	55.35	184.73	184.73	6,692.9	-529.6	-810.1	187.6	11.49	
Tully									
6,980.0	57.90	183.92	183.92	6,705.5	-548.8	-811.6	204.8	11.49	
7,011.0	61.63	182.29	182.29	6,721.1	-575.5	-813.0	229.0	12.86	
7,041.0	66.23	179.99	179.99	6,734.3	-602.5	-813.6	253.8	16.81	

Received
Office of Oil & Gas
2015 10/09/2015

17-06373



EOW Completion Report



Company:	Antero Resources	Local Co-ordinate Reference:	Well Anne Unit 1H
Project:	Doddridge County WV	TVD Reference:	Precision 522 GL 1001' + 18' RKB @ 1019.0usft
Site:	Anne / Hardin Pad	MD Reference:	Precision 522 GL 1001' + 18' RKB @ 1019.0usft
Well:	Anne Unit 1H	North Reference:	Grid
Wellbore:	Original Wellpath	Survey Calculation Method:	Minimum Curvature
Design:	As Drilled	Database:	Oklahoma District

Survey							
MD (usft)	Inc (°)	Azi (azimuth) (°)	TVD (usft)	N/S (usft)	E/W (usft)	V. Sec (usft)	DLeg (°/100usft)
7,072.0	70.75	177.50	6,745.7	-631.3	-812.9	280.8	16.38
7,076.0	71.07	177.34	6,747.0	-635.1	-812.7	284.3	8.77
Marcellus							
7,103.0	73.20	176.26	6,755.3	-660.7	-811.3	308.7	8.77
7,134.0	75.14	174.95	6,763.7	-690.4	-809.0	337.1	7.46
7,165.0	78.44	172.51	6,770.8	-720.4	-805.7	366.1	13.12
7,196.0	81.60	169.86	6,776.2	-750.6	-801.0	395.9	13.22
7,227.0	83.82	168.09	6,780.1	-780.8	-795.2	426.0	9.13
7,248.0	84.22	167.77	6,782.3	-801.2	-790.8	446.6	2.43
7,293.0	85.12	166.05	6,786.5	-844.8	-780.6	490.9	4.30
7,386.0	89.87	164.12	6,790.5	-934.6	-756.7	583.1	5.51
7,478.0	91.28	162.71	6,789.6	-1,022.8	-730.5	674.6	2.17
7,571.0	90.40	159.90	6,788.3	-1,110.8	-700.7	767.5	3.17
7,663.0	89.34	158.06	6,788.5	-1,196.7	-667.7	859.4	2.31
7,756.0	89.69	156.65	6,789.3	-1,282.5	-631.9	952.4	1.56
7,849.0	88.55	157.09	6,790.7	-1,368.0	-595.3	1,045.4	1.31
7,941.0	89.16	158.32	6,792.5	-1,453.1	-560.5	1,137.4	1.49
8,034.0	90.13	159.11	6,793.1	-1,539.8	-526.7	1,230.4	1.35
8,126.0	89.43	157.53	6,793.5	-1,625.3	-492.7	1,322.4	1.88
8,219.0	89.25	157.00	6,794.5	-1,711.0	-456.8	1,415.3	0.60
8,312.0	89.69	157.09	6,795.4	-1,796.7	-420.5	1,508.3	0.48
8,404.0	89.52	154.63	6,796.0	-1,880.6	-382.9	1,600.3	2.68
8,497.0	88.90	156.91	6,797.3	-1,965.4	-344.7	1,693.2	2.54
8,589.0	89.78	157.35	6,798.4	-2,050.2	-309.0	1,785.2	1.07
8,682.0	89.25	157.97	6,799.1	-2,136.2	-273.6	1,878.1	0.88
8,774.0	89.34	158.41	6,800.3	-2,221.6	-239.4	1,970.1	0.49
8,867.0	88.81	159.37	6,801.8	-2,308.3	-205.9	2,063.1	1.18
8,960.0	88.90	160.52	6,803.6	-2,395.7	-174.1	2,156.0	1.24
9,052.0	90.57	158.67	6,804.1	-2,481.9	-142.0	2,248.0	2.71
9,145.0	89.96	157.88	6,803.6	-2,568.3	-107.6	2,341.0	1.07
9,237.0	89.69	157.88	6,803.9	-2,653.5	-72.9	2,433.0	0.29
9,330.0	89.43	157.35	6,804.6	-2,739.5	-37.5	2,526.0	0.63
9,424.0	88.02	156.56	6,806.7	-2,826.0	-0.7	2,619.9	1.72
9,518.0	88.37	157.53	6,809.7	-2,912.5	35.9	2,713.9	1.10
9,613.0	88.29	158.49	6,812.5	-3,000.6	71.5	2,808.8	1.01
9,707.0	88.11	159.81	6,815.4	-3,088.4	104.9	2,902.8	1.42
9,801.0	88.11	159.37	6,818.5	-3,176.4	137.7	2,996.7	0.47
9,895.0	88.81	158.93	6,821.0	-3,264.2	171.1	3,090.6	0.88
9,990.0	89.87	159.55	6,822.1	-3,353.0	204.8	3,185.6	1.29
10,085.0	89.08	156.56	6,823.0	-3,441.1	240.3	3,280.6	3.26
10,179.0	87.67	155.42	6,825.7	-3,527.0	278.5	3,374.5	1.99
10,273.0	87.58	156.39	6,829.6	-3,612.7	316.9	3,468.3	1.04
10,368.0	89.25	158.85	6,832.2	-3,700.5	353.0	3,563.3	3.13
10,461.0	89.69	160.16	6,833.0	-3,787.6	385.6	3,658.1	1.49
10,553.0	89.34	158.23	6,833.8	-3,873.6	418.2	3,748.2	2.13

Received
Office of Oil & Gas
17 2015

17-06373



EOW Completion Report



Company:	Antero Resources	Local Co-ordinate Reference:	Well Anne Unit 1H
Project:	Doddridge County WV	TVD Reference:	Precision 522 GL 1001' + 18' RKB @ 1019.0usft
Site:	Anne / Hardin Pad	MD Reference:	Precision 522 GL 1001' + 18' RKB @ 1019.0usft
Well:	Anne Unit 1H	North Reference:	Grid
Wellbore:	Original Wellpath	Survey Calculation Method:	Minimum Curvature
Design:	As Drilled	Database:	Oklahoma District

Survey

MD (usft)	Inc (°)	Azi (azimuth) (°)	TVD (usft)	N/S (usft)	E/W (usft)	V. Sec (usft)	DLeg (°/100usft)
10,646.0	88.37	157.00	6,835.7	-3,959.6	453.7	3,841.2	1.68
10,738.0	88.90	157.35	6,837.9	-4,044.4	489.3	3,933.2	0.69
10,831.0	88.37	157.00	6,840.1	-4,130.0	525.4	4,026.1	0.68
10,924.0	89.16	159.02	6,842.1	-4,216.3	560.2	4,119.1	2.33
11,016.0	90.48	161.40	6,842.4	-4,302.8	591.4	4,211.0	2.96
11,109.0	90.31	159.81	6,841.7	-4,390.5	622.2	4,303.9	1.72
11,202.0	89.25	157.18	6,842.1	-4,477.0	656.3	4,396.9	3.05
11,294.0	88.64	155.95	6,843.8	-4,561.4	692.9	4,488.9	1.49
11,387.0	89.87	156.65	6,845.0	-4,646.6	730.3	4,581.8	1.52
11,479.0	90.75	157.00	6,844.5	-4,731.2	766.5	4,673.8	1.03
11,572.0	89.52	156.21	6,844.3	-4,816.5	803.4	4,766.8	1.57
11,665.0	89.43	157.70	6,845.1	-4,902.1	839.8	4,859.7	1.61
11,757.0	90.13	158.32	6,845.5	-4,987.4	874.3	4,951.7	1.02
11,850.0	91.45	159.37	6,844.2	-5,074.1	907.8	5,044.7	1.81
11,942.0	91.63	157.53	6,841.7	-5,159.7	941.6	5,136.7	2.01
12,035.0	89.96	156.30	6,840.4	-5,245.2	978.1	5,229.6	2.23
12,128.0	90.13	154.98	6,840.4	-5,329.9	1,016.4	5,322.6	1.43
12,220.0	91.19	155.24	6,839.3	-5,413.4	1,055.1	5,414.4	1.19
12,314.0	90.31	156.47	6,838.1	-5,499.1	1,093.6	5,508.4	1.61
12,407.0	91.01	156.83	6,837.0	-5,584.5	1,130.4	5,601.3	0.85
12,499.0	90.31	157.88	6,836.0	-5,669.4	1,165.9	5,693.3	1.37
12,592.0	90.66	157.70	6,835.2	-5,755.5	1,201.0	5,786.3	0.42
12,684.0	90.04	158.58	6,834.6	-5,840.9	1,235.3	5,878.3	1.17
12,777.0	90.31	157.79	6,834.3	-5,927.2	1,269.8	5,971.3	0.90
12,870.0	89.25	155.07	6,834.7	-6,012.4	1,307.0	6,064.3	3.14
12,962.0	90.22	157.00	6,835.1	-6,096.5	1,344.4	6,156.2	2.35
13,055.0	91.19	157.53	6,834.0	-6,182.3	1,380.3	6,249.2	1.19
13,147.0	90.40	159.90	6,832.7	-6,268.0	1,413.7	6,341.2	2.72
13,240.0	91.80	160.96	6,830.9	-6,355.6	1,444.9	6,434.1	1.89
13,333.0	92.07	160.16	6,827.8	-6,443.2	1,475.8	6,526.9	0.91
13,425.0	89.87	159.55	6,826.2	-6,529.6	1,507.5	6,618.8	2.48
13,518.0	90.31	160.96	6,826.1	-6,617.1	1,538.9	6,711.8	1.59
13,610.0	87.76	159.11	6,827.6	-6,703.6	1,570.3	6,803.7	3.42
13,703.0	88.72	160.87	6,830.5	-6,790.9	1,602.1	6,896.6	2.15
13,795.0	89.25	159.46	6,832.1	-6,877.4	1,633.3	6,988.5	1.64
13,888.0	89.34	157.18	6,833.2	-6,963.9	1,667.7	7,081.5	2.45
13,981.0	90.84	160.43	6,833.1	-7,050.5	1,701.3	7,174.5	3.85
14,073.0	91.63	159.81	6,831.1	-7,137.0	1,732.6	7,266.4	1.09
14,166.0	91.63	157.62	6,828.5	-7,223.7	1,766.3	7,359.3	2.35
14,259.0	89.69	157.18	6,827.4	-7,309.5	1,802.0	7,452.3	2.14
14,351.0	90.75	157.88	6,827.0	-7,394.5	1,837.2	7,544.3	1.38
14,444.0	91.45	157.62	6,825.2	-7,480.6	1,872.4	7,637.3	0.80
14,536.0	89.63	155.27	6,824.4	-7,564.9	1,909.2	7,729.2	3.23
14,629.0	89.25	155.24	6,825.3	-7,649.4	1,948.1	7,822.1	1.41

Received
Office of Oil & Gas
AUG 17 2015

17-06373



EOW Completion Report



Company:	Antero Resources	Local Co-ordinate Reference:	Well Anne Unit 1H
Project:	Doddridge County WV	TVD Reference:	Precision 522 GL 1001' + 18' RKB @ 1019.0usft
Site:	Anne / Hardin Pad	MD Reference:	Precision 522 GL 1001' + 18' RKB @ 1019.0usft
Well:	Anne Unit 1H	North Reference:	Grid
Wellbore:	Original Wellpath	Survey Calculation Method:	Minimum Curvature
Design:	As Drilled	Database:	Oklahoma District

MD (usft)	Inc (°)	Azi (azimuth) (°)	TVD (usft)	N/S (usft)	E/W (usft)	V. Sec (usft)	DLeg (°/100usft)
14,722.0	89.96	155.42	6,825.9	-7,733.9	1,986.9	7,915.0	0.79
14,814.0	91.36	156.83	6,824.9	-7,818.0	2,024.1	8,007.0	2.16
14,907.0	90.92	156.65	6,823.0	-7,903.4	2,060.9	8,099.9	0.51
14,983.0	91.36	156.56	6,821.5	-7,973.1	2,091.0	8,175.9	0.59
15,042.0	91.36	156.56	6,820.1	-8,027.3	2,114.5	8,234.8	0.00

Measured Depth (usft)	Vertical Depth (usft)	Local Coordinates		Comment
		+N/-S (usft)	+E/-W (usft)	
6,468.0	6,355.4	-229.0	-657.2	Sycamore
6,707.0	6,529.4	-347.3	-765.8	Middlesex
6,910.0	6,664.9	-492.0	-806.5	Burkett
6,957.0	6,692.9	-529.6	-810.1	Tully
7,076.0	6,747.0	-635.1	-812.7	Marcellus

Checked By: _____ Approved By: _____ Date: _____

Received
Office of Oil & Gas
AUG 17 2015